


# SUNCRUISER

2012 





ON THE COVER: 35P Black Walnut Full-Body Paint



35P Athena with Coffee-Glazed Vienna Maple



37F Tranquil with Honey Cherry

## LEGENDS ARE MADE

The Itasca SunCruiser® has forged its legendary reputation year after year by offering luxury Class A styling and quality at an exceptional value. 2012 builds on that reputation with a new look and a host of features that you will be excited to make your own.

The 32H offers plenty of choices, including the U-shaped dinette or available Rest Easy® lounge. Like the idea of a retractable 40" LCD TV, buffet and extendable dining table? The 37F is for you. Traditionalists may opt for the 35P with the BenchMark® full-comfort dinette and the Rest Easy lounge, complete with a 40" LCD TV mid-coach.

All three models boast a Home Theater Sound System coupled with the large screen LCD TV for vivid entertainment.

### Why SunCruiser?

- Full-wall slideout on all models
- TrueAir® maximum comfort A/C
- RV Radio®/rearview monitor system
- Swivel Ultraleather™ cab seats
- MCD American roller shades
- Corian® countertops
- Master bath (37F)
- Spacious bedrooms
  - Walk-around queen bed on all models
  - Available king bed (35P and 37F)
- Hydraulic leveling jacks
- Stylized aluminum wheels



## DESIGNED FOR ENTHUSIASTS

Owners love their Itasca motor homes, and with good reason. The RV Dealers Association annually bestows the Quality Circle Award based on dealer ratings to manufacturers that provide exceptional products, service and support. Only one manufacturer has received this award for fifteen consecutive years: Winnebago Industries,® proud manufacturer of the Itasca SunCruiser.

## CREATURE COMFORTS

You will love the full-featured kitchen, complete with three-burner range top, stainless steel microwave/convection oven with vented range hood, and the two-door or available four-door refrigerator. If your cooking repertoire requires more flexibility, change it up for the three-burner range with oven. The new backsplash is beautiful and easy to clean, and rests above elegant Corian countertops. A generous pantry and bountiful cabinetry round out the kitchen.

Bath time on the road no longer means sacrificing space. The BIG Shower offers a massive 36" x 36" of shower space (37F). Corian countertops house an under-mount sink. Guests will appreciate the mid-coach half-bath and you'll enjoy the luxury of a full private master bathroom (37F).

Why stop there? The spacious bedrooms offer an LCD TV and queen bed standard. Do you like to watch movies in bed? The HD video selection system allows you to watch your favorite movies on either the lounge or bedroom TV.

You're always in control with the available automatic generator start system. It turns on the generator based on indoor temperature, battery voltage or a programmable time so you know your air conditioner will be running when you need it most. The OnePlace® systems center lets you monitor key systems from one location, and the PowerLine® energy management system helps prevent tripped campground circuit breakers.



# DISCOVER THE DIFFERENCE

The difference is in the details. Explore the exceptional products and technologies that go into making Itasca motor homes simply the best.



Where other motor homes may be short on space, our **Full-Extension Drawer Slides** are another feature that take advantage of Itasca's SmartSpace™ design philosophy to maximize functionality.



Spend more time outside while enjoying a 32" LCD TV or the AM/FM stereo with CD/DVD player on the available **Exterior Entertainment Center**.



The **BenchMark® Full Comfort Dinette** is so much more. With its flip-up storage, easy operation, and comfortable styling, you will enjoy cozy dining in the evening and extra sleeping space at night.



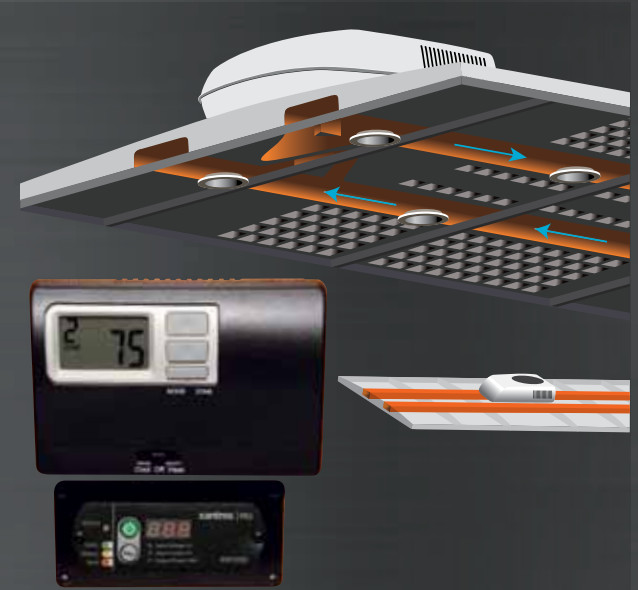
The **Dash Workstation** is a great place to keep in touch by catching up on emails or even writing a letter.



The **Rest Easy Multi-Position Lounge**—a sofa, a lounger, a bed—is versatile, beautiful, and durable. It's also another good example of how we work to make you feel right at home.



Nothing feels better at the end of the day than relaxing in the **Euro Recliner** with built-in footrest. (37F) The hoop base lets you move it to your favorite spot when parked.



You deserve the best and that's what you get when you have the **TrueAir Maximum Comfort A/C**. With its innovative duct design, infinitely adjustable vents, and high-efficiency units, you get even heating or cooling throughout your coach, no matter the temperature outside.



With the available smoothly retracting **MCD American Duo® Solar/Blackout Roller Shades** you can control just how much light and privacy you want—no matter the time of day.



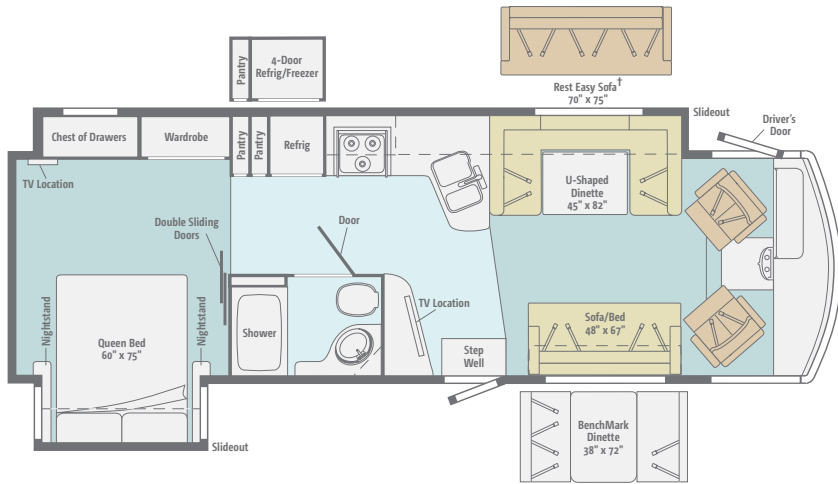
Accurate readings are assured with the **TrueLevel™ Holding Tank Monitoring System's** use of sonar technology to gather data without probes that can corrode.



**GoItasca.com** is your resource for web-exclusive content and all the details you can't fit in a brochure!

# FLOORPLANS & SPECIFICATIONS

Dimensions shown are for sleeping space only and may vary due to styling differences. Dashed lines denote overhead storage areas. Floorplans and specifications are also available online at [Goltasca.com](http://Goltasca.com).

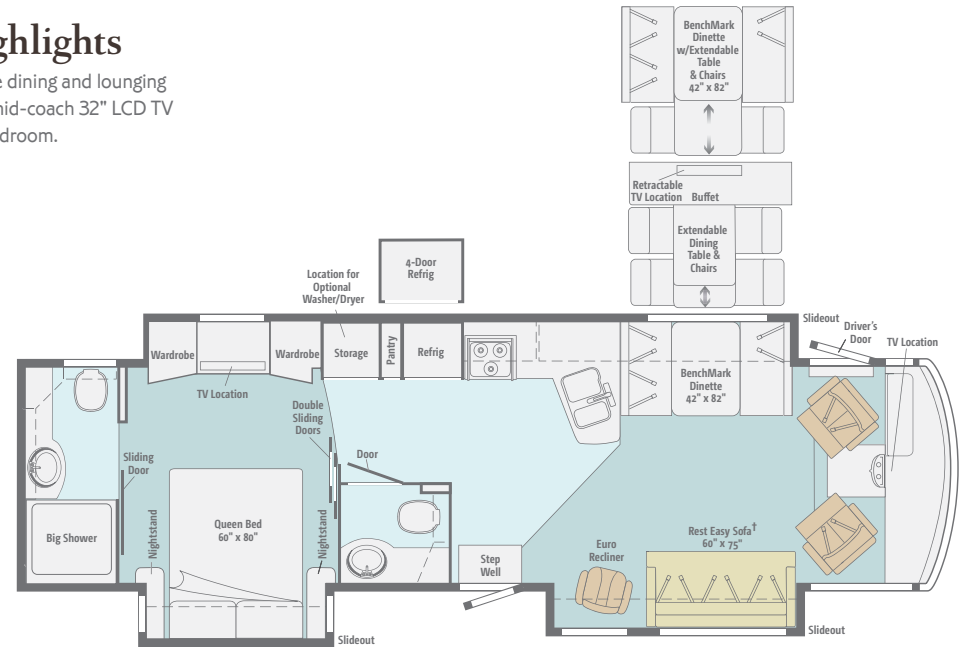
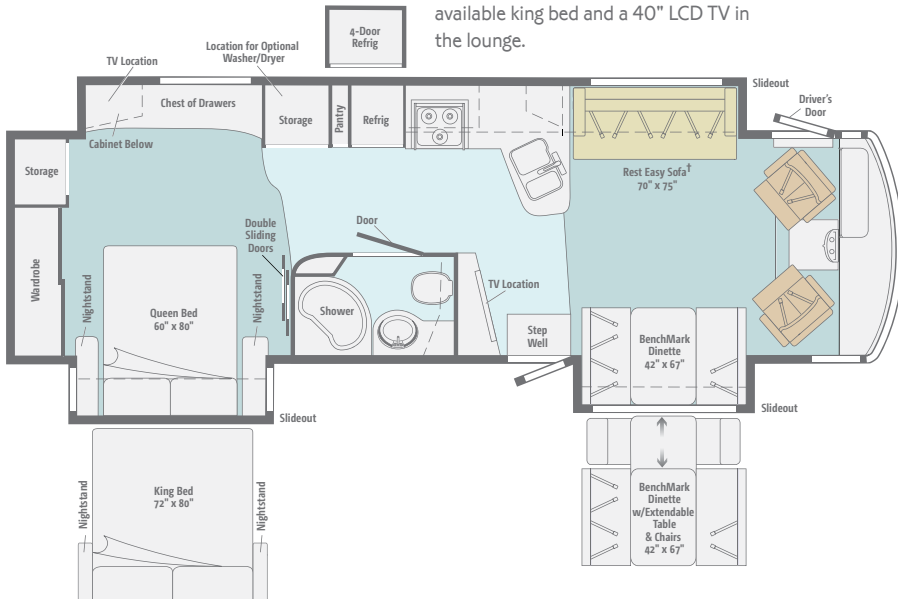


## 32H Highlights

Explore multiple dining and lounging options with a mid-coach 32" LCD TV and spacious bedroom.

## 35P Highlights

Enjoy abundant bedroom storage, an available king bed and a 40" LCD TV in the lounge.



## 37F Highlights

Featuring a full private master bathroom with guest bath mid-coach, spacious kitchen and lounge with multiple dining options.

† Available with single or dual controls. Dual-control option includes only two seat belts.



Experience the SunCruiser in action—take a virtual tour at [Goltasca.com](http://Goltasca.com).

## Chassis

**Ford® F53 22,000-lb. Chassis** 362-hp 6.8L V10 SEFI Triton® engine, TorqShift™ 5-speed automatic overdrive transmission w/tow haul, HydroMax brakes w/ABS, 175-amp. alternator (32H, 35P)

**Ford F53 24,000-lb. Chassis** (37F)

**Trailer Hitch**® 5,000-lb. drawbar/500-lb. maximum vertical tongue weight w/7-pin connector

**Stylized aluminum wheels**

**Hydraulic leveling jacks**

### *Optional Equipment*

**Ford F53 24,000-lb. Chassis** (35P)

## Cab Conveniences

**RV Radio®/Rearview Monitor System**

6.5" LCD color touch screen, CD player, weather band, remote, iPod/MP3 input, rear color camera

**Chassis/house battery radio power switch**

**Cab Seats** adjustable armrests, lumbar support, multi-adjustable recline and swivel/slide

**6-way power-assist driver seat**

**Cab sound control package**

**Cruise control**

**12-volt powerpoints**

**Map lights**

**Power steering w/tilt wheel**

**Dash workstation**

**C.B. wire prep kit**

**Power mirrors w/defrost**

**MCD American Duo® powered front shade w/solar and blackout shades, privacy curtain for driver and passenger**

**Defroster fans**

**Sideview color video camera system**

**Light-filtering roller shades for driver and passenger windows**

### *Optional Equipment*

Sirius® satellite radio, 6-month subscription included, iPod interface connector, receiver

**Passenger seat w/footrest** (35P, 37F)

## Interior

**32" LCD TV** (32H, 37F)

**40" LCD TV** (35P)

**Digital HDTV amplified antenna system**

**Home Theater Sound System** amplifier, DVD player, receiver, 5 speakers and subwoofer

**OnePlace® systems center**

**Satellite system ready, including bedroom TV**

**MCD American Solo® blackout roller shades** (lounge, dinette and bedroom)

**Tinted dual-glazed/thermo-insulated windows**

**Soft vinyl ceilings**

**Key-activated slideroom master lock switch**

**HD video selection system**

**Powered ventilator fan** (galley)

**Powered roof vent** (bath)

### *Optional Equipment*

**MCD American Duo® solar/blackout roller shades** (lounge, dinette and bedroom)

**Dining table/buffet/chairs w/retractable 40" LCD TV** (37F)

**RV digital satellite dish**

**King-Dome® automatic satellite dish**

**King-Dome HD-ready in-motion satellite dish**

**Stackable washer/dryer** (35P, 37F)

**Vinyl tile front to bedroom** (slideouts, cab and bedroom areas are carpeted)

## Kitchen

**Corian® solid-surface countertop and backsplash**

**Sharp stainless steel microwave/convection oven w/range fan**

**Amana® 3-burner range top w/storage below**

**Corian sink and range covers**

**Norcold® 2-door refrigerator/freezer**

**Filtration system w/separate cold water faucet**

### *Optional Equipment*

**Amana 3-burner range w/oven**

**Norcold 2-door refrigerator/freezer w/icemaker**

**Norcold 4-door refrigerator/freezer w/icemaker**

## Bath

**Textured glass shower door**

**Flexible showerhead**

**Corian countertop**

**Skylight** (32H, 35P)

**Porcelain toilet**

**Water pump switch(es)**

## Bedroom

**Powered queen bed w/Ideal Rest® digital comfort control mattress w/remotes** (37F)

**Queen bed w/innerspring mattress, storage below** (32H, 35P)

**19" LCD TV** (32H)

**26" LCD TV** (35P, 37F)

**DVD cable ready for bedroom TV** (35P, 37F)

**Bedsread, pillow shams and pillows**

### *Optional Equipment*

**King bed w/innerspring mattress and access to storage below** (35P)

**Queen Ideal Rest digital comfort control mattress w/remotes** (32H, 35P)

**King Ideal Rest digital comfort control mattress w/remotes** (35P)

**Powered king bed w/Ideal Rest digital comfort control mattress w/remotes** (37F)

**Stereo System** AM/FM, CD/DVD player, alarm clock and iPod/MP3 input

**Ceiling fan**

## Exterior

**Driver's side service light**

**TriMark® KeyOne™ lock system**

**Porch light**

**Electric entrance steps**

**Ladder**

**Front and rear mud flaps**

**Electric patio awning w/metal wrap and Weather MAX™ fabric**

**Lower front protective mask**

**Lighted storage compartments**

### *Optional Equipment*

**Exterior Entertainment Center** 32" LCD TV, AM/FM stereo w/CD/DVD player and remotes

## Heating & Cooling System

**35,000 BTU low-profile furnace** (32H)

**40,000 BTU two-speed, low-profile furnace** (35P, 37F)

**TrueAir® Maximum Comfort A/C** two 13,500 BTU, low-profile roof air conditioners w/heat pumps

## Electrical System

**AC/DC distribution system**

**55-amp. converter/charger**

**Service Center** cable TV input, 50 amp. power cord, QuickPort™ hatch, portable satellite dish hookup

**Exterior AC duplex receptacle**

**Exterior antenna jack**

**5,500-watt Cummins Onan® Marquis Gold™ generator**

**PowerLine® energy management system**

**Auxiliary start circuit**

**Two deep-cycle Group 31 batteries**

**Battery disconnect systems** (coach and chassis)

**Automatic dual-battery charge control**

**Generator/shoreline automatic changeover switch**

**10-watt solar panel battery charger**

### *Optional Equipment*

**1,000-watt inverter w/remote panel**

**Cummins Onan Energy Command™ automatic generator start system**

## Plumbing System

**Service Center** QuickPort hatch, exterior wash station w/pump switch, pressurized city water hookup w/diverter valve, drainage valves, 10' sewer hose, black tank flushing system

**LP Tank, permanent mount w/gauge**

**TrueLevel™ holding-tank monitoring system**

**On-demand water pump**

**Heated holding tank compartment**

**Winterization Package** water heater bypass valve and siphon tube

**10-gallon water heater, 110 V/LP gas w/motoraid and auxiliary auto heater**

## Safety

**Seat belts**

**Child seat tether anchor** (dinette) (35P)

**LP, smoke and carbon monoxide detectors**

**10 BC fire extinguisher**

**Ground fault interrupter**

**Fog lamps**

**High-mount brake lamps**

## Warranty<sup>7</sup>

**12-month/15,000-mile basic warranty<sup>8</sup>**

**36-month/36,000-mile limited warranty on structure<sup>8</sup>**

**10-year limited parts-and-labor warranty on roof skin<sup>8</sup>**

- <sup>1</sup> The height of each model is measured to the top of the tallest standard feature and is based on the curb weight of a typically equipped unit. The actual height of your vehicle may vary by several inches depending on chassis or equipment variations. Please contact your dealer for further information.
- <sup>2</sup> SunCruiser floorplans feature a wide-body design – over 96" in making your purchase decision, you should be aware that some states restrict access on some or all state roads to 96" in body width. Before making your purchase decision, you should confirm the road usage laws in the states of interest to you.
- <sup>3</sup> The load capacity of your motor home is designated by weight, not by volume, so you cannot necessarily use all available space when loading your motor home.
- <sup>4</sup> Capacities are based on measurements prior to tank installation. Slight capacity variations can result due to installation applications.
- <sup>5</sup> Capacities shown are tank manufacturer's listed water capacity (W.C.). Actual filled LP capacity is 80% of listing due to overfilling prevention device on tank.
- <sup>6</sup> Actual towing capacity is dependent on your particular loading and towing circumstances which includes the GVWR, GAWR, and GCWR as well as adequate trailer brakes. Please refer to the Operator's Manual of your vehicle for further towing information.
- <sup>7</sup> See separate chassis warranty.
- <sup>8</sup> See your dealer for complete warranty information.

NA Not Available

Not all items available in combination. See dealer for details.

Winnebago Industries® continuing program of product improvement makes specifications, equipment, model availability, and prices subject to change without notice. Comparisons to other motor homes are based on the most recent information available at printing.

## Weights & Measures

	32H	35P	37F
Length	32'11"	35'6"	37'5"
Exterior Height <sup>1</sup>	12'8"	12'8"	12'8"
Exterior Width <sup>2</sup>	8'5.5"	8'5.5"	8'5.5"
Exterior Storage <sup>3</sup> (cu. ft.)	105.8	107.6	121.7
Awning Length	17'	17'	18'
Interior Height	7'	7'	7'
Interior Width	8'0.5"	8'0.5"	8'0.5"
Freshwater Capacity w/Heater <sup>4</sup> (gal.)	85	85	85
Holding Tank Capacity - Black/Gray <sup>4</sup> (gal.)	43/48	43/60	52/71
LP Capacity <sup>5</sup> (gal.)	23	28	28
Fuel Capacity (gal.)	80	80	80
GCWR <sup>6</sup> (lbs.)	26,000 <sup>A</sup>	26,000 <sup>A</sup> /30,000 <sup>B</sup>	30,000 <sup>B</sup>
GVWR (lbs.)	22,000 <sup>A</sup>	22,000 <sup>A</sup> /24,000 <sup>B</sup>	24,000 <sup>B</sup>
GAWR - Front (lbs.)	8,000 <sup>A</sup>	8,000 <sup>A</sup> /9,000 <sup>B</sup>	9,000 <sup>B</sup>
GAWR - Rear (lbs.)	15,000 <sup>A</sup>	15,000 <sup>A</sup> /15,500 <sup>B</sup>	15,500 <sup>B</sup>
Wheelbase	220"	228"	248"

A - Ford F53 22,000-lb. GVWR Chassis w/22.5" Tires B - Ford F53 24,000-lb. GVWR Chassis w/22.5" Tires

## TAKE A TOUR



We're proud of our processes, state-of-the-art facilities and the people who make Winnebago Industries number one. We invite you to visit our complex in Forest City, Iowa, for a first-hand look at the dedication and technology behind every motor home we build.

# NO SHORTCUTS — NO COMPROMISES

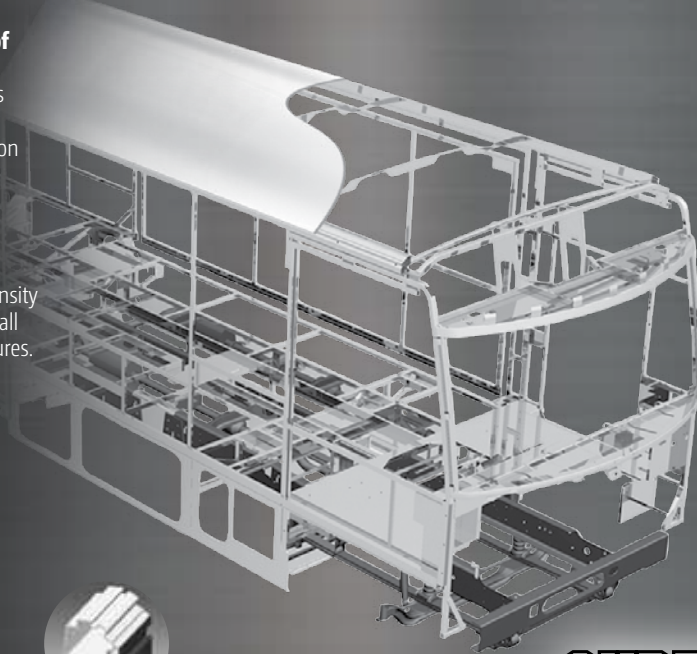
The crowned, one-piece **fiberglass roof** is backed by a 10-year limited parts-and-labor roof skin warranty. Fiberglass offers superior strength and durability over less attractive rubber roofs found on so many competitive models that can streak and degrade over time.

Durable, lightweight **Thermo-Panel® sidewalls** combine fiberglass, high-density block-foam insulation and the inner wall surface with aluminum support structures.

**Metal substructures** secure cabinets and appliances to add safety and stability.

An **electrodeposition coating** helps protect critical steel components.

Specially engineered **interlocking joints** connect the floor, sidewalls and roof into a cohesive unit.



**SUPER  
STRUCTURE**



You can compare features. You can compare styles. But when it comes to quality construction, there is no comparison. Only motor homes manufactured by Winnebago Industries harness the legendary strength and durability of our SuperStructure™ construction process—a process we've been perfecting for more than 50 years.

SuperStructure means a solid framework, steel and aluminum substructures and components built in-house to our exacting standards. It means managing each detail to ensure the integrity and quality of every coach. It means barcoding parts to save time and frustration during service and running every coach through a high-pressure leak test before it leaves the factory.

Where other manufacturers cut corners, SuperStructure ensures the features you can't see are treated with the same care as the ones you can. When you buy an Itasca motor home, you are getting a coach that is built for you—and built to last.



# EXTERIORS



**Charcoal Mica**  
FULL-BODY PAINT



**Black Walnut**  
FULL-BODY PAINT



**Silver Sage**  
FULL-BODY PAINT



**Wine**  
FULL-BODY PAINT

# DÉCOR

Choose from three fabric collections. Upgrade to Ultraleather™ furniture for luxurious comfort that is both durable and easy to clean. Traditional-style cabinetry comes in elegant Honey Cherry, Forest Cherry or Coffee-Glazed Vienna Maple finishes, all with satin nickel hardware that creates a warm, inviting interior.

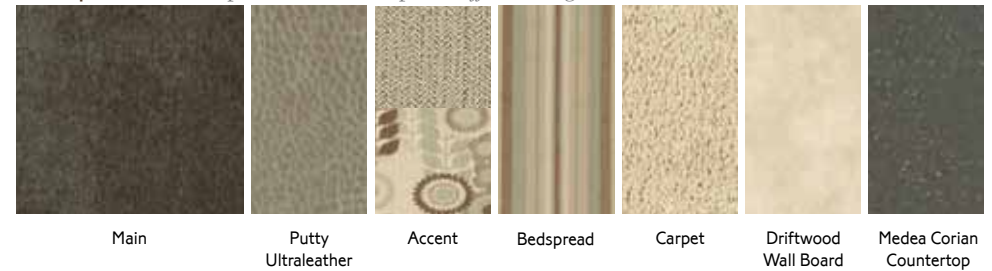
**Nightingale** *Rich tones elegantly contrast with a modern flair.*



**Athena** *Understated yet luxurious warmth with hints of the old world.*



**Tranquil** *Traditional patterns and a cool palette offer soothing texture.*



Fabrics and carpets may change without notice or obligation.

DON'T MISS OUT



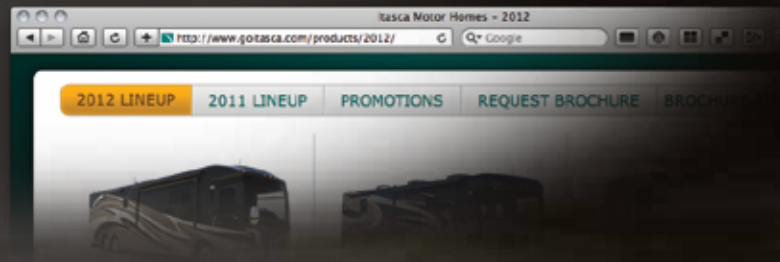
Caravans, rallies, local and state events, and exclusive RV travel benefits can all be yours as a WIT Club member – and you can meet like-minded folks that possess the same enthusiasm for traveling this great nation of ours. It's a wonderful way to make your SunCruiser a way of life. Learn more about the Winnebago-Itasca Travelers Club at WITclub.com.

Members enjoy:

- Caravans and Rallies
- Local and State Group Activities
- RV Travel Benefits



For photos, videos and a whole lot more about the full lineup of Itasca motor homes, visit Goltasca.com.



## COMMITTED TO SERVICE

We back our motor homes with best-in-class support both before and after the sale:



- 12-month/ 15,000-mile basic limited warranty
- 36-month/36,000-mile limited warranty on structure
- 10-year standard limited parts-and-labor roof skin warranty
- Complimentary 24-hour roadside assistance program
  - RV Technical Assistance Hotline
  - RV Service Appointment Assistance
  - Emergency Trip Interruption
  - Emergency Message Service
  - Nationwide Trip Routing
  - Fee-Free Travelers Cheques
- TripSaver Fast Track Parts guarantees that in-stock warranty parts ship directly to your dealer within 24 hours
- National dealer service network



NYSE: WGO

Goltasca.com

THE MOST RECOGNIZED NAME IN MOTOR HOMES\*



For Sales and Service Information Contact: