



DAYBREAK

CLASS-A GAS MOTORHOME SPECIFICATIONS





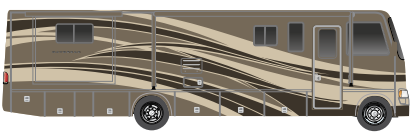
30FS FLOORPLAN / LUXURY CHERRY WOOD / GOLD MEDALLION DÉCOR



STANDARD GRAPHICS



MESA SAND PARTIAL PAINT



BRIARWOOD FULL BODY PAINT



CROSSFIRE FULL BODY PAINT



LUXURY CHERRY



VINTAGE MAPLE



34KD FLOORPLAN / OPTIONAL EXTERIOR ENTERTAINMENT PACKAGE



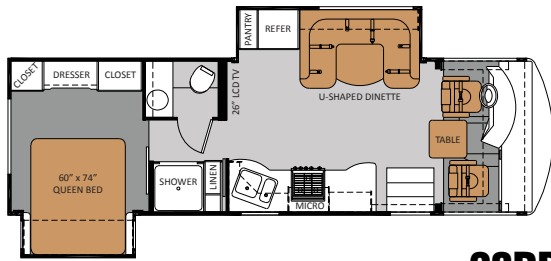
BEACH COMBER



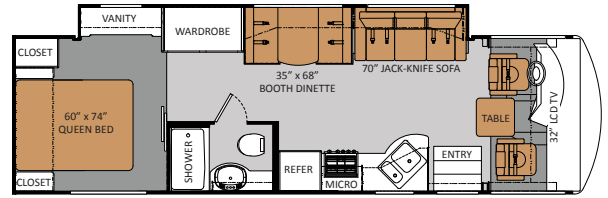
DESERT CLAY



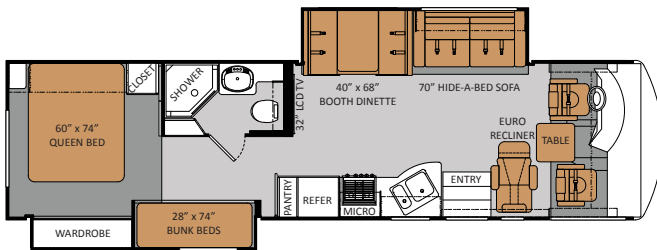
GOLD MEDALLION



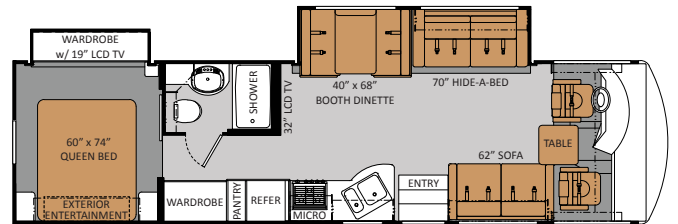
28PD



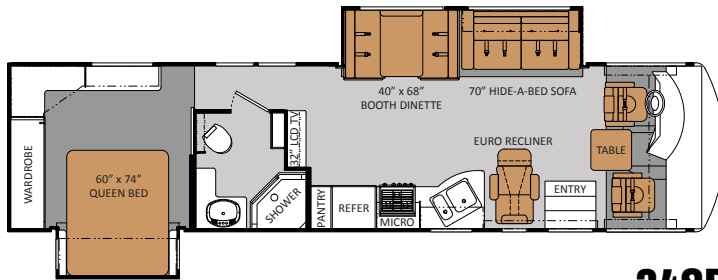
30FS



34BD



34KD



34SD

IMPORTANT - PLEASE READ: Information published within this brochure reflects product design, fabrication, material, components and specifications at the date of printing. If your vehicle was manufactured before this brochure was published this information may not be accurate because vehicles assembled before the brochure was published may not have the same design, fabrication, materials, components and specification as represented in the brochure. If your vehicle was manufactured after this sales brochure was published the representations may not be accurate because, for product improvement reasons, we reserve the unilateral right, at any time, without prior notice, to make changes in product design, material, components and specifications. The date the brochure was published (i.e. "Julian date") is set forth on the last page of the brochure. **IF CERTAIN INFORMATION PUBLISHED WITHIN THIS BROCHURE IS SIGNIFICANT TO YOUR PURCHASING DECISION, PLEASE CONSULT WITH YOUR SELLING DEALERSHIP TO CONFIRM THAT THE INFORMATION IS ACCURATE WITH RESPECT TO THE VEHICLE YOU ARE CONSIDERING PURCHASING.** Photographs in the brochure may depict optional equipment or may only be available in certain floor plans. We reserve the right to make changes in prices and models and to discontinue models without notice or obligation. Components, appliances and the chassis may have been manufactured in a calendar year before the vehicle's designated model year. All capacities are approximate. The actual length of the vehicle may differ from that indicated in the brochure due to variances in the manufacturing processes and/or installed components. All dry weights are based on standard model features and do not include optional features or equipment. Components, appliances and features may differ to conform to local codes. Due to EPA environmental restrictions, engine power and torque ratings may change during any model year. The Thor Motor Coach logo and its design are registered trademarks. Other products and company names are trademarks and/or registered trademarks of their respective manufacturer. While the color of the motorhome's exterior and the interior fabrics depicted in this brochure are fair and reasonable depictions, the colors depicted may not be exact match of the actual colors because of variances in photo processing and printing. Component part and appliance manufacturers issue limited warranties covering portions of the vehicle not covered under the limited warranty we issue. To learn specific details regarding warranty coverage please consult your selling dealership or review the warranty packet inside the vehicle.

MODEL	28PD	30FS	34BD	34KD	34SD
Chassis	Ford	Ford	Ford	Ford	Ford
Gross Vehicle Weight Rating (GVWR)	18,000	18,000	22,000	22,000	22,000
Gross Combined Weight Rating (GCWR)	26,000	26,000	26,000	26,000	26,000
Wheel Base	200"	208"	228"	216.5"	228"
Exterior Length (without ladder)	29'-8"	31'-11"	35'-6"	34'-7"	36'-5"
Exterior Height (with air conditioning)	12'-7"	12'-7"	12'-7"	12'-7"	12'-7"
Exterior Width (without mirrors)	101"	101"	101"	101"	101"
Interior Height	82"	82"	82"	82"	82"
Awning Size	14'	16'	13'	16'	16'
Fuel (gallons)	80	80	80	80	80
LPG (pounds)	81	81	81	81	81
Fresh Water (gallons)	65	65	65	65	65
Grey Water (gallons)	47	47	47	47	47
Waste Water (gallons)	47	47	47	47	47
Water Heater (gallons)	6	6	6	6	6
Furnace (BTUs)	30,000	30,000	30,000	30,000	30,000
Exterior Storage Capacity (cubic feet)	99	121	131	163	200

STANDARD FEATURES AND OPTIONS

CHASSIS

- Ford Chassis - 6.8L Triton V-10 Engine with 5 Speed TorqueShift® Automatic Transmission with Overdrive
- Stainless Steel Wheel Liners
- Trailer Hitch (5,000 tow / 500 Tongue lbs.)

CHASSIS OPTIONS

- Automatic Leveling Jacks with Touch Pad Controls

CONSTRUCTION & EXTERIOR

- Fiberglass Front and Rear Caps
- Side-Mounted Power Patio Awning
- Side Mounted Awning Over Slide Outs
- Rear Ladder
- Locking Exterior Aluminum Storage Doors
- Easy-to-clean Lighted Rotocast Storage Compartments
- Full Basement Pass-Through Storage
- Pre-wired Entertainment Hookup in Storage Area
- Double Electric Exterior Entrance Step

CONSTRUCTION & EXTERIOR OPTIONS

- Partial paint package
- Black framed dual-pane windows
- Upgraded Gel-Coat Walls
- Full body paint with gel coat walls
- Exterior Entertainment Package: Includes 26" TV, DVD radio w/speakers, 600W power inverter, 2.5CF refrigerator, sink, free-standing gas grill (34KD Only)

AUTOMOTIVE & COCKPIT

- AM/FM Radio with In-Dash CD Player
- Cruise Control
- Windshield privacy shade
- Emergency-start circuit
- Map light
- Side mount mirrors
- Reclining swivel Leatherette captain's chairs
- Sun visors
- Backup monitor system prep
- Pedestal table between captain's chairs

AUTOMOTIVE & COCKPIT OPTIONS

- Back-up Monitor System w/Audio
- Side Cameras (requires Back-up Monitor System option)

MULTIMEDIA

- 32" Color LCD Television with antenna, booster and co-ax connection (N/A 28PD)
- 26" Color LCD Television (28PD Only)
- 19" Color LCD Television in hallway (remove with wardrobe option) (34BD Only)

MULTIMEDIA OPTIONS

- 19" LCD Television - Bedroom

INTERIOR

- Leatherette Sofa (34KD Only)
- Leatherette Hide-a-Bed Sofa (N/A 28PD)
- Leatherette U-Dinette (28PD Only)
- Night shades
- Linoleum through out (carpeted slide out floor)
- Innerspring mattress
- Bunk beds (34BD Only)
- Mini blinds at Bunk Beds (34BD Only)

KITCHEN

- Refrigerator: flush-mount, double-door with black inserts
- 3-burner range and oven with stainless steel cover
- Stainless Steel Microwave oven
- Lighted power range hood
- Solid-wood raised panel cabinet doors upper and lower
- Booth dinette (N/A 28PD)
- Ball bearing drawer guides

ELECTRICAL & PLUMBING

- Shower with surround
- Glass Shower door
- Power vent
- Foot flush porcelain toilet
- Air conditioner: 15,000-BTU ducted central (front)

- Furnace: 30,000 BTU electronic ignition surface mount door floor-ducted
- Remote thermostatically controlled air conditioning
- Water heater: 6-gallon gas with electronic ignition
- Water heater bypass kit
- Onan 4.0 (4,000 kilowatts)
- 60 amp converter
- Deep cycle battery - 12V
- Battery disconnect
- 30 amp / 120 volt service
- Enclosed heated potable and holding tanks
- Cable TV / satellite hookup inside storage area
- Pre-wired for roof-mounted satellite dish
- Carbon monoxide, propane gas and smoke detectors

ELECTRICAL & PLUMBING OPTIONS

- Rear Air conditioner: 13,500-BTU ducted central (Requires Freedom Package)

DAYBREAK "FREEDOM" PACKAGE

- Generator: Onan 5.5 kW Marquis Gold
- Dual 6-volt auxiliary batteries
- 50-amp, 120-volt service
- Gas / Electric Water Heater

DAYBREAK "PREFERRED" PACKAGE

- Side mount power mirrors with heat
- Refrigerator: Large 8.0 Cu ft. flush-mount, double-door
- iPod® Docking Station
- Dash fans



DAYBREAK



SCAN THE QR CODE WITH YOUR SMART PHONE

YOUR LOCAL TMC DEALER:



Go RVing.

P.O. BOX 1486 • ELKHART, IN 46515 • CUSTOMER SERVICE: 877-855-2867 • SALES DEPARTMENT: 800-860-5658 • DAYBREAKRV.COM

