


# ELLIPSE

2012 







42QD Cimarron with Coffee-Glazed Forest Cherry



42QD Chain Link with Coffee-Glazed Forest Cherry

## ABSOLUTELY EVERYTHING

That's what there is to love about the Itasca Ellipse.® For 2012, our flagship diesel pusher is sure to turn heads, offering you all the livability you could imagine. From the Maxum Chassis as its foundation to the custom touches everywhere, the Itasca Ellipse is luxury, value and comfort come full circle.

It starts with a 450-hp Cummins® ISL Turbo Diesel Engine. Three floorplans open up a world of possibilities, including the all new 42JD. All three sit atop the Maxum Chassis' lowered-rail design, with an available full-width exterior slideout compartment tray for incredibly easy access to impressive storage.

When dinner's ready, you can enjoy it at the stylish and supremely comfortable buffet with extendable dining table and cushioned chairs. Well-planned living spaces introduce polished porcelain tile flooring and furniture including the wall-away recliner and Euro recliner. The Ellipse is luxury living through and through.

### Why Ellipse?

- Three 42-foot floorplans with full-wall or quad slideouts
- Unmatched performance of the Maxum Chassis®
- New **+Lounge** passenger seat (available in all models)
- Stainless steel appliances
- Rest Easy® Extendable Sectional Sofa (42QD and 42AD)
- Power king bed with Ideal Rest® mattress
- MCD American Duo® solar/blackout roller shades
- Polished porcelain tile floors



## DESIGNED FOR ENTHUSIASTS

Owners love their Itasca motor homes, and with good reason. The RV Dealers Association annually bestows the Quality Circle Award based on dealer ratings to manufacturers that provide exceptional products, service and support. Only one manufacturer has received this award for sixteen consecutive years: Winnebago Industries,® proud manufacturer of the Itasca Ellipse.



## YOU'VE GOT IT ALL

The Itasca Ellipse provides everything you could want in a premier motor coach: luxurious styling; spacious comfort; an open floor plan, yet cozy, well-defined living spaces. The lounge area is incredibly generous, featuring the Ultraleather™ Extendable Sectional Sofa in the 42AD and 42QD that comfortably seats six, and dual sofas in the 42JD. Recliners—either the wall-away recliner or Euro recliner—are available on all floorplans.

You will enjoy your favorite programming on a 40" LCD HDTV. In fact, the 42AD offers two—one front overhead and another mid-coach. The 42QD features its TV atop the

available fireplace, positioned to face the sectional sofa. In addition to its 40" LCD HDTV, the 42JD includes a mid-coach 32" LED HDTV.

The Home Theater Sound System ensures optimal sound entertainment, and provides an AM/FM receiver with a CD/DVD player, amplifier, five speakers and two subwoofers. Entertainment options include the available Blu-Ray player for the ultimate in movie-watching and the King Dome® in-motion satellite system that gives you the freedom to enjoy satellite programming on the road.



**Freshly Washed**  
The available stackable washer and dryer eliminates laundromat stops and makes laundry a breeze, so you will never have to do without your favorite outfit, no matter where you are.

# THE HEART OF THE HOME

The gorgeous kitchen stands as the centerpiece of your 2012 Itasca Ellipse where you will enjoy making meals, memories and more. The four-door refrigerator/freezer and microwave/convection oven come standard, or choose the residential french-door refrigerator/freezer and microwave speedcook oven options.

Make cleanups easy with the available drawer-style dishwasher and central vacuum system with VacPan®.

Cabinetry is beautiful, plentiful, designed to maximize usability and comes in three coffee-glazed finishes, all with satin nickel hardware. SmartSpace™ design examples abound, including the all new pantry in the 42JD and 42QD that features two levels of storage. Countertops are Corian®, which extend through the backsplash and sink covers. The recessed three-burner range also offers a glass cover to increase counter space when needed.

We've also added a pull-out island (42QD) and pull-out table (42AD); just more ways we work to increase the flexibility of your living space in the Ellipse.



42JD



42QD



**Residential Luxury** The available french-door refrigerator with drawer-style freezer offers an ice and water dispenser and ample space for all your cold-storage needs in a stylish stainless steel package (includes a 2,800-watt inverter and two additional house batteries).



**Quick Cleanup** The stainless steel drawer-style dishwasher not only looks great, but is sized perfectly to handle even larger plates, so you will have more time to play.



**Food Lover's Heaven** Stock up for meals of all types and sizes in the one-of-a-kind **Pantry<sup>2</sup>** (42JD and 42QD). It opens to reveal vertical storage which in turn opens to reveal spacious shelves and large drawers.



GoItasca.com is your resource for web-exclusive content and all the details you can't fit in a brochure!

# SWEET, SWEET SLUMBER

Opposing slideouts create an amazingly spacious feel in the bedroom. Gorgeous cabinetry includes both a generous wardrobe and chest of drawers. In fact, we've increased the amount of hanging wardrobe space by 18% for 2012 (42JD/42QD), so all your favorite outfits are sure to make the trip.

The stereo system plays DVDs and CDs, includes an AM/FM radio, an alarm clock and an MP3 input—so you can tune into whatever you like. The LCD HDTV is housed atop the chest of drawers.

It's the bed that steals the show in this beautiful room. This powered bed cradles the Ideal Rest® Digital Comfort Control Mattress, giving you two remotes for perfect control of the firmness of each side of the bed. You also have the ability to elevate the head of the bed at the press of a button, perfect for lounging and relaxing.



42JD



42JD



42JD



42JD

**The Best for Last** The generously-sized master bathroom (42JD/42QD) features Corian countertops, abundant coffee-glazed cabinetry, shower skylight, and available stackable washer/dryer. Who knew getting ready for the day could be so beautiful?



Goltasca.com is your resource for web-exclusive content and all the details you can't fit in a brochure!



## THE FINER THINGS

The same upscale feel you experience in the living areas is readily evident in the well-designed cab. Let's start with the seats—Ultraleather, of course. Six-way powered, and heated, they also slide, swivel, and recline. The passenger seat can be upgraded to the +Lounge feature with footrest and personal workstation.

The steering wheel not only tilts for the perfect angle, but is telescoping so it will rest at the perfect height, no matter who is driving.

The stylish dash houses the RV Radio®, a blend of CD player, AM/FM stereo and weather band, all controlled from a 6.5" LCD touch screen. The addition of the available Infotainment Center/GPS provides navigation

assistance no matter where your travels take you. You can add Sirius® Satellite Radio for over one hundred additional stations.

Maneuver with confidence using the rearview and sideview monitors. They are both viewed on the touch screen, and activate automatically when needed.

Once you've arrived at your destination, you will revel in the control afforded by MCD American Duo® solar/blackout roller shades—they combine 100% light privacy with a solar shade to allow in just as much, or as little, light as you desire.



**Infotainment Center/GPS** This available technological marvel combines GPS navigation, CD/DVD player, rearview monitor and more into one 7" touch screen. It even includes a second monitor for the passenger.

# DISCOVER THE DIFFERENCE

The difference is in the details. Explore the exceptional products and technologies that go into making Itasca motor homes simply the best.



With the smoothly retracting **MCD American Duo Solar/Blackout Roller Shades** you can control just how much light and privacy you want—no matter the time of day or night.



SmartSpace has done it again with our new innovation, the **+Lounge** heated passenger cab seat. It combines the ultimate comfort of a plush recliner with the added usability of a personal desktop. Best of all, +Lounge rotates to become an integral part of the living area.



The **Power Bed** enables you to quickly elevate the head of your king bed for reading or movies at night. Add to that the Ideal Rest Digital Comfort Control mattress and you will create the perfect environment for your best night's sleep.



Redesigned for 2012, the supremely comfortable **Euro Lounge Recliner** comes in lush Ultraleather and features a built-in footrest. Available in the 42QD and 42JD.



Spend more time outside while enjoying AM/FM stereo with CD/DVD player on the available **Exterior Entertainment Center** that also includes a 32" LCD HDTV.



An easy access **LP Gas Accessory Valve** is perfectly placed for grilling by the patio.



Easy accessibility describes the storage bays and the available full-width **Sliding Tray** that has been redesigned to provide a lower profile so you can easily store larger and more gear.



Color-coded labels remove the guesswork; **QuickConnect**® makes hookups a snap, and **QuickPort**® enables the bay door to close with the hookups connected.



## TEAMWORK IN ACTION

Winnebago Industries teamed with Freightliner® Chassis, the undisputed leader in diesel motor home chassis, to design the Maxum Chassis for the Itasca Ellipse, and it remains the defining standard in diesel pusher performance.

How did we do it? We combined Freightliner's know-how with our SuperStructure® technology, and the result is a revolutionary chassis with a lowered-rail design that not only delivers an incredibly smooth ride and superior handling, but immense and unparalleled cross-coach storage capability—up to 192 cubic feet.

The Maxum Chassis comes equipped with the following:

- 44,600-lb. GVWR
- Cummins Turbo-Charged ISL 450-hp Diesel Engine
- Allison® 3000 MH 6-Speed Transmission
- 15,000-lb. Hitch
- ZF IFS Front Suspension
- NeWay® Rear Air Suspension

And, to provide you with the ultimate in comfort no matter where your travels may take you, Freightliner's Maxum Chassis comes with a 3-year/50,000-mile limited warranty that includes towing and roadside assistance, and over 400 service locations across the U.S. and Canada.

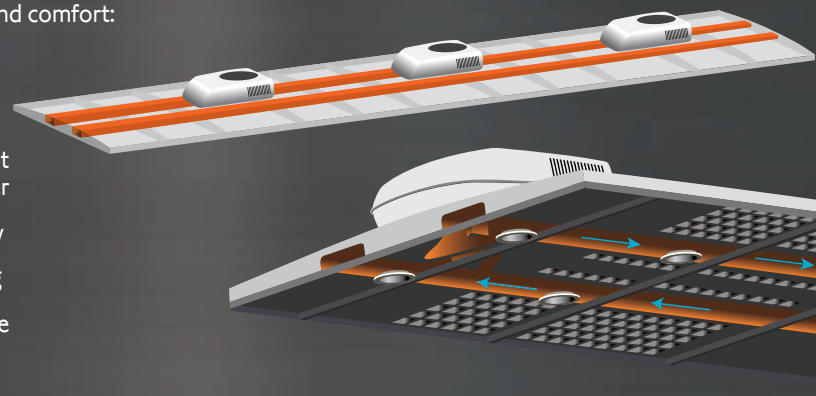
Settle for nothing less than the best.



## SET YOUR COORDINATES TO MAXIMUM COMFORT

TrueAir® Maximum Comfort AC raises the bar on RV air conditioning, employing next-generation technology to provide unparalleled climate control and comfort:

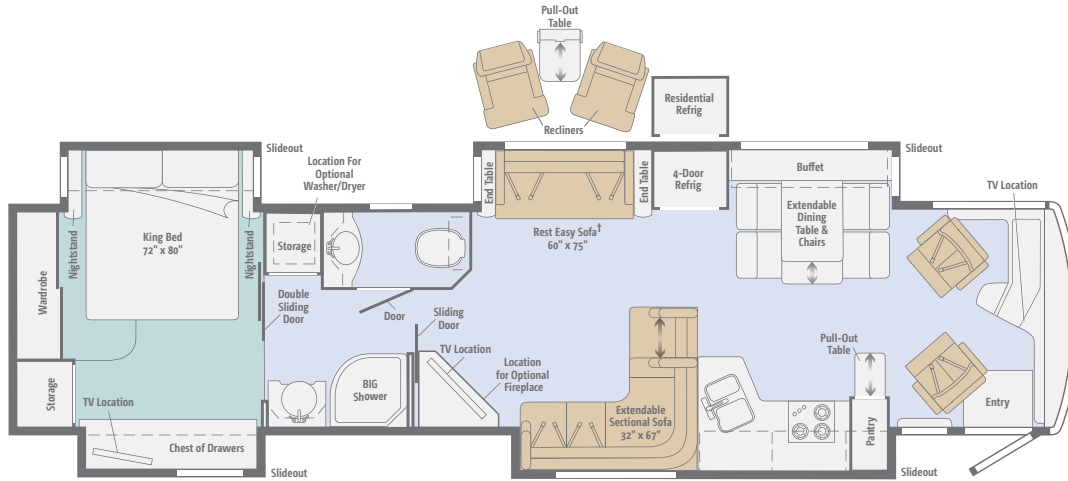
- Three high-efficiency, low-profile, roof-mount cooling units deliver unsurpassed cooling power
- D-shaped, formed ductwork optimizes airflow
- Dual-zone thermostat offers precision cooling
- Infinitely adjustable ceiling vents provide finite control



GoItasca.com is your resource for web-exclusive content and all the details you can't fit in a brochure!

# FLOORPLANS & SPECIFICATIONS

Dimensions shown are for sleeping space only and may vary due to styling differences. Dashed lines denote overhead storage areas. Floorplans and specifications are also available online at [Goltasca.com](http://Goltasca.com).

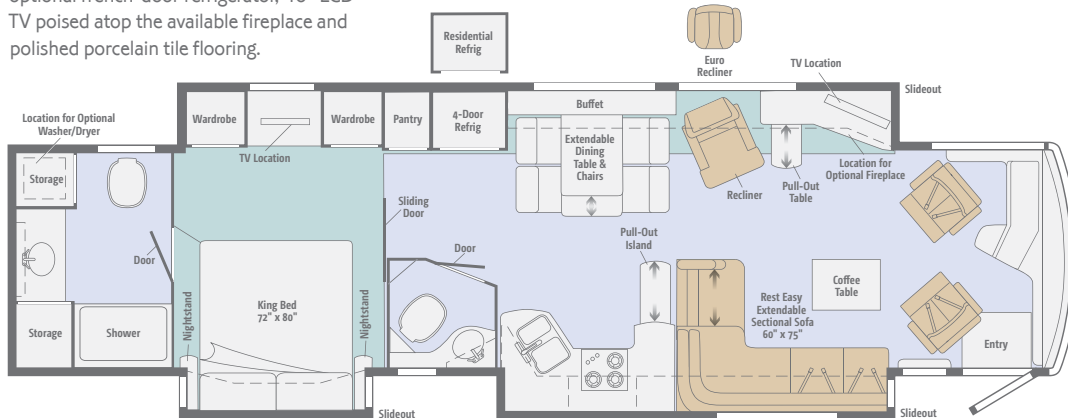


## 42AD Highlights

Quad slideouts offer dual 40" LCD TVs, Rest Easy tandem of extendable sectional and sofa, and a full-featured kitchen toward the front with pull-out table topped with Corian and offering additional storage.

## 42QD Highlights

Triple/full-wall slideouts create space for two bathrooms, the extendable sectional sofa, optional french-door refrigerator, 40" LCD TV poised atop the available fireplace and polished porcelain tile flooring.



## 42JD Highlights NEW

Triple/full-wall slideouts extend the living space where you'll find a luxurious master bath, an open lounge/kitchen area, two TVs and available dual Euro recliners with built-in footrests.



Experience the Ellipse in action—take a virtual tour at [Goltasca.com](http://Goltasca.com)

# Maxum® Freightliner® Chassis

450-hp Cummins ISL 8.9L turbo-charged diesel engine

Adjustable brake and accelerator pedals

Allison® 3000 MH 6-speed electronic transmission, engine compression brake

Information display center

ZF IFS front suspension, NeWay® rear suspension

160-amp. alternator

Air brakes w/ABS

QuickConnect® air accessory

Automatic leveling jacks w/3-position controls

Tow power package w/7-pin trailer wiring and I.P. wiring

Trailer Hitch<sup>6</sup> 15,000-lb. drawbar/1,500-lb. maximum vertical tongue weight

Stylized aluminum wheels

## Cab Conveniences

**Cab Seats** armrests, lumbar support, multi-adjustable recline and six-way power pedestals

**Heated driver seat**

**Heated, queen passenger seat**

**Passenger seat footrest**

**RV Radio®/Rearview Monitor System** 6.5" LCD color touch screen, CD player w/remotes, weather band, iPod®/MP3 input, rearview color camera w/one-way audio and sideview camera system

**Tilt/telescoping SmartWheel™ steering wheel** w/infinite adjustable column

**Cruise control**

**Power door locks w/remote keyless entry**

**Electric adjustable mirrors w/defrost and turn signal light in lower glass**

**12-volt powerpoints**

**Powered stepwell cover**

**Two-speed built-in defroster fans**

**MCD American Duo® solar/blackout duo roller shades** powered for windshield, manual for driver/passenger windows

**Chassis/house battery radio power switch**

**Dual map lights**

**C.B. wire prep**

## Optional Equipment

**Infotainment Center/GPS** voice navigation, 7" LCD touch screen color monitor w/PIP, handheld remote and steering wheel remote, AM/FM/CD/DVD radio, Sirius satellite ready, iPod interface connector, passenger-side monitor, rear and sideview cameras

**Sirius® Satellite Radio** 6-month complimentary subscription and iPod interface connector

+**Lounger** heated passenger seat w/flip-up workstation

## Interior

**32" LED HDTV** (42JD)

**40" LCD HDTV**

**Home Theater Sound System** CD/DVD player, receiver, amplifier, 5 speakers and subwoofers

**Digital HDTV amplified antenna system**

**Area rug** (lounging area 42QD and rear bathroom 42JD, 42QD)

**Key-activated slideroom master lock switch**

**HD video selection system**

**Satellite system ready** (front and bedroom)

**OnePlace® systems center**

**Tinted, dual-glazed, thermo-insulated coach windows**

**Soft vinyl ceiling**

**Powered roof vent** (kitchen and bath)

**Accent Lights** above front overhead cabinets and ceiling trim

**MCD American Duo® solar/blackout duo roller shades**

## Optional Equipment

**Blu-Ray Home Theater Sound System** CD/DVD player, receiver, amplifier, 5 speakers and subwoofers

**Dirt Devil® central vacuum system w/VacPan®**

**Stackable washer/dryer**

**King-Dome® in-motion satellite dish, dual LNB, HD-ready** (front and bedroom)

**King-Dome automatic satellite dish antenna, HD-ready** (front and bedroom)

**Electric fireplace** (42QD, 42AD)

## Kitchen

**Corian® countertops, backsplash and sink covers**

**4-door refrigerator/freezer w/icemaker**

**Stainless steel microwave/convection oven w/sensor cook and vented range fan**

**3-burner range top w/glass cover and storage below**

**Filtered cold-water faucet**

## Optional Equipment

**Stainless steel Maytag® refrigerator w/french doors, freezer drawer, water and ice dispenser** (includes 2,800-watt inverter and 2 additional 12-volt coach batteries)

**Stainless steel drawer-style dishwasher**

**Stainless steel microwave/speedcook oven w/exterior vented range fan**

## Bath

**Corian countertop**

**Flexible showerhead**

**Shower surround w/molded shower seat**

**Moen® Posi-Temp® shower valve**

**Textured glass shower door**

**Skylight**

**Porcelain toilet**

## Bedroom

**26" LCD HDTV** (42JD, 42QD)

**32" LCD HDTV** (42AD)

**Stereo System** AM/FM, CD/DVD, alarm clock, iPod/MP3 input, headphone jack, speakers (2)

**Ceiling fan**

**Powered king bed w/Ideal Rest™ digital comfort control mattress and remote controls**

**Bedsread, pillows and shams**

## Exterior

**Auxiliary docking lamps**

**Driver-side service bay light**

**Powered acrylic patio awning w/wind sensor**

**Powered acrylic entrance awning**

**Acrylic window awnings**

**Storage compartments w/movable panels**

**KeyOne™ lock system**

**Lighted storage compartments**

**4 storage containers w/lids**

**7' folding step ladder**

**Porch and stepwell light**

**Automatic entrance steps**

**Rear ladder**

**Lower front protective mask**

**Double clear-coat exterior**

**Rear mud flaps**

**Full-width rear mudguard**

**Polished stainless steel on lower valance doors and panels**

## Optional Equipment

**Entertainment Center** 32" LCD TV, AM/FM stereo, CD/DVD player w/remote, iPod/MP3 input w/iPod connector, TV jack, radio antenna, power outlets, speakers (2), subwoofer

**90" slideout storage compartment tray**

**Portable refrigerator/freezer**

## Heating & Cooling System

**TrueAir® Maximum Comfort A/C** three 13,500 BTU low-profile roof air conditioners w/heat pump and condensate pump

**Aqua-Hot® 450 hydronic dual-zone heating system w/continuous hot water**

## Electrical System

**Service Center** lighted, 120V AC power, cable input, power cord, QuickPort®

**PowerLine® Energy Management System**

**Auxiliary start circuit**

**50-amp. power cord**

**Exterior TV jack and AC duplex receptacle**

**2,000-watt inverter/converter/charger w/remote panel** (2,800-watt w/french-door refrigerator/freezer upgrade)

**10,000-watt Cummins Onan® Quiet Diesel™ generator**

**Generator slideout mechanism**

**AC/DC electrical distribution system**

**4 maintenance-free AGM (Absorbed Glass Mat) sealed batteries** (6 batteries w/optional french-door refrigerator)

**Battery disconnect system** (coach and chassis)

**Automatic dual-battery charge control**

**Shoreline/generator automatic changeover switch w/Surge Guard Plus**

**Solar panel battery charger**

**Chassis battery charger/maintainer**

**Automatic generator start system**

## Optional Equipment

**Power cord reel**

## Plumbing System

**Service Center** lighted, pressurized city water hook-up w/diverter fill, fresh water drain, drainage valves, exterior wash station w/pump switch, glove holder, holding-tank flushing system, paper towel holder, portable satellite dish hook-up, 20-foot sewer hose w/QuickConnect®, QuickPort, soap dispenser

**TrueLevel™ holding-tank monitoring system**

**Full-coach water filtration system**

**Permanent-mount LP tank w/gauge**

**LPG accessory connection** (patio area)

**On-demand water pump**

## Optional Equipment

**Water supply hose w/reel**

## Safety

**Seat belts**

**LP, smoke and carbon monoxide detectors**

**10 BC fire extinguisher**

**Ground fault interrupter**

**Daytime running lamps**

**Fog lamps**

**High-mount brake lamps**

## Warranty<sup>7</sup>

**12-month/15,000-mile basic warranty<sup>8</sup>**

**36-month/36,000-mile limited warranty on structure<sup>8</sup>**

**10-year limited parts and labor warranty on roof skin<sup>8</sup>**

- The height of each model is measured to the top of the tallest standard feature and is based on the curb weight of a typically equipped unit. The actual height of your vehicle may vary by several inches depending on chassis or equipment variations. Please contact your dealer for further information.
- Ellipse floorplans feature a wide-body design—over 96". In making your purchase decision, you should be aware that some states restrict access on some or all state roads to 96" in body width. Before making your purchase decision, you should confirm the road usage laws in the states of interest to you.
- The load capacity of your motor home is designated by weight, not by volume, so you cannot necessarily use all available space when loading your motor home.
- Capacities are based on measurements prior to tank installation. Slight capacity variations can result due to installation applications.
- Capacities shown are tank manufacturer's listed water capacity (W.C.). Actual filled LP capacity is 80% of listing due to overfilling prevention device on tank.
- Actual towing capacity is dependent on your particular loading and towing circumstances which includes the GVWR, GAWR, and GCWR, as well as adequate trailer brakes. Please refer to the Operator's Manual of your vehicle for further towing information.
- See separate chassis warranty.
- See your dealer for complete warranty information.

NA Not Available

Not all items available in combination. See dealer for details.

Winnebago Industries® continuing program of product improvement makes specifications, equipment, model availability, and prices subject to change without notice. Comparisons to other motor homes are based on the most recent information available at printing.

## Weights & Measures

	42AD	42JD	42QD
Length	42'10"	42'10"	42'10"
Exterior Height <sup>1</sup>	12'11"	12'11"	12'11"
Exterior Width <sup>2</sup>	8'5.5"	8'5.5"	8'5.5"
Exterior Storage <sup>3</sup> (cu. ft.)	183	181.4	192.5
Awning Length	20'	18'	14'6"
Interior Height	7'	7'	7'
Interior Width	8'0.5"	8'0.5"	8'0.5"
Freshwater Capacity w/Heater <sup>4</sup> (gal.)	92	92	92
Holding Tank Capacity - Black/Gray <sup>4</sup> (gal.)	51/129	51/116	51/71
LP Capacity <sup>5</sup> (gal.)	30	30	30
Fuel Capacity (gal.)	150	150	150
GCWR <sup>6</sup> (lbs.)	59,600	59,600	59,600
GVWR (lbs.)	44,600	44,600	44,600
GAWR - Front (lbs.)	14,600	14,600	14,600
GAWR - Rear (lbs.)	30,000	30,000	30,000
Wheelbase	279" + tag	279" + tag	279" + tag

## TAKE A TOUR



We're proud of our processes, state-of-the-art facilities and the people who make Winnebago Industries number one.

We invite you to visit our complex in Forest City, Iowa, for a first-hand look at the dedication and technology behind every motor home we build.

# NO SHORTCUTS — NO COMPROMISES

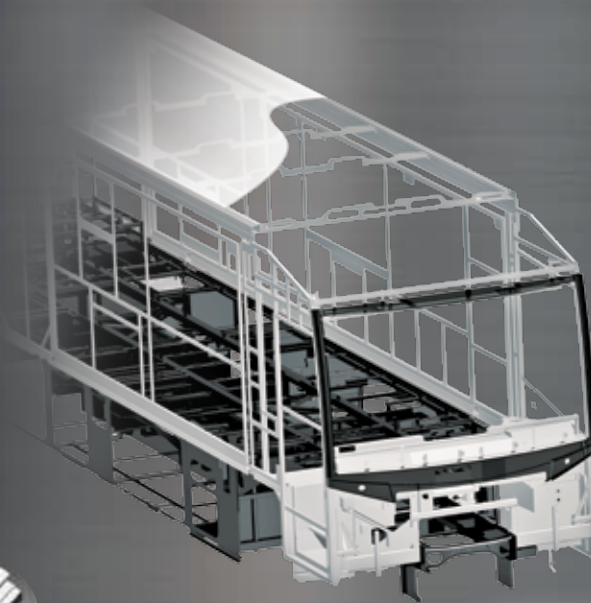
The crowned, one-piece **fiberglass roof** is backed by a 10-year limited parts-and-labor roof skin warranty. Fiberglass offers superior strength and durability over less attractive rubber roofs found on so many competitive models that can streak and degrade over time.

Durable, lightweight **Thermo-Panel® sidewalls** combine fiberglass, high-density block-foam insulation and the inner wall surface with aluminum support structures.

**Metal substructures** secure cabinets and appliances to add safety and stability.

An **electrodeposition coating** helps protect critical steel components.

Specially engineered **interlocking joints** connect the floor, sidewalls and roof into a cohesive unit.



**SUPER  
STRUCTURE**



You can compare features. You can compare styles. But when it comes to quality construction, there is no comparison. Only motor homes manufactured by Winnebago Industries harness the legendary strength and durability of our SuperStructure™ construction process—a process we've been perfecting for more than 50 years.

SuperStructure means a solid framework, steel and aluminum substructures and components built in-house to our exacting standards. It means managing each detail to ensure the integrity and quality of every coach. It means barcoding parts to save time and frustration during service and running every coach through a high-pressure leak test before it leaves the factory.

Where other manufacturers cut corners, SuperStructure ensures the features you can't see are treated with the same care as the ones you can. When you buy an Itasca motor home, you are getting a coach that is built for you—and built to last.

# EXTERIORS

The Ellipse has distinguished curb appeal thanks to totally new exterior styling and full-body paint with a double clear coat. A lower front protective mask safeguards the paint for years to come.



**Sandalwood**  
FULL-BODY PAINT



**Dark Cherry**  
FULL-BODY PAINT



**Sierra Canyon**  
FULL-BODY PAINT



**Pyrite**  
FULL-BODY PAINT



**Glacier**  
FULL-BODY PAINT



**Toreador**  
FULL-BODY PAINT

# DÉCOR

Three fabric collections and three coffee-glazed cabinet wood choices with brushed nickel hardware and hidden hinges let you select your perfect interior. Ultraleather™ provides a luxurious, better-than-leather alternative that is extra soft, durable and easy to clean.

**Affinity** *Classic color palette in layers of cream offset by multi-faceted floral motif.*



Surfside Ultraleather

Accent

Bedspread

Carpet

Driftwood  
Wall Board

Fawn  
Corian  
Countertop

**Chain Link** *Bold depth of color contrasts a geometric flair with whimsical accents.*



Onyx Ultraleather

Accent

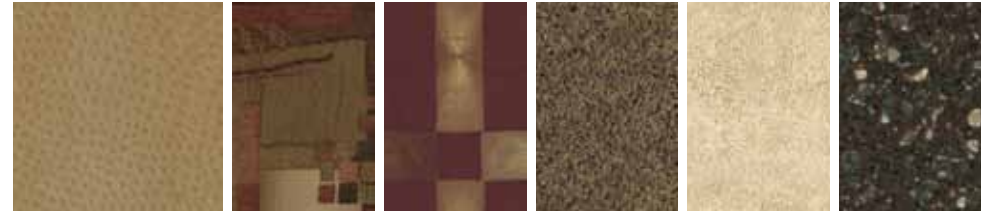
Bedspread

Carpet

Driftwood  
Wall Board

Night Sky  
Corian  
Countertop

**Cimarron** *Vibrant earth tones with playful abstract accents offer warmth.*



Marsh Ultraleather

Accent

Bedspread

Carpet

Sage  
Wall Board

Cocoa Brown  
Corian  
Countertop



Coffee-Glazed  
Honey Cherry

Coffee-Glazed  
Forest Cherry

Coffee-Glazed  
Vienna Maple

Fabrics and carpets may change without notice or obligation.

DON'T MISS OUT



Caravans, rallies, local and state events, and exclusive RV travel benefits can all be yours as a WIT Club member—and you can meet like-minded folks that possess the same enthusiasm for traveling this great nation of ours. It's a wonderful way to make your Ellipse a way of life. Learn more about the Winnebago-Itasca Travelers Club at [WITclub.com](http://WITclub.com).

Members enjoy:

- Caravans and Rallies
- Local and State Group Activities
- RV Travel Benefits



Four simple questions to ask *before* you buy.

visit [BetterBuiltRVs.com](http://BetterBuiltRVs.com)

## COMMITTED TO SERVICE

We back our motor homes with best-in-class support both before and after the sale:



**TRIP Saver**  
EAST TRACK PARTS

- 12-month/ 15,000-mile basic limited warranty
- 36-month/36,000-mile limited warranty on structure
- 10-year standard limited parts-and-labor roof skin warranty
- Complimentary 24-hour roadside assistance program
  - RV Technical Assistance Hotline
  - RV Service Appointment Assistance
  - Emergency Trip Interruption
  - Emergency Message Service
  - Nationwide Trip Routing
  - Fee-Free Travelers Cheques
- TripSaver Fast Track Parts guarantees that in-stock warranty parts ship directly to your dealer within 24-hours
- National dealer service network



NYSE: WGO  
[Goltasca.com](http://Goltasca.com)

THE MOST RECOGNIZED NAME IN MOTOR HOMES\*



For Sales and Service Information Contact: