

DESTINY

Luxury Fifth Wheels



Standard Features



The Destiny 5th Wheel is in a class by itself and is the premier Luxury 5th Wheel on the market today. Destiny is designed with the extended stay RVer in mind and is nothing short of spectacular, in both its interior appointments and outstanding design concepts. Destiny gives you the most interior and exterior storage in the industry. When looking for a Luxury 5th Wheel of your own, you want to make sure you are provided with the features and all of the conveniences of home.



A. 6' 7" Tall Living Room Super-Slides with abundant overhead cabinet space. 74" Plush Residential Sofas that convert to a 60 x 80 Queen Bed air mattress with the touch of a button & a built in storage drawer for bedding. (ALL OF THESE FEATURES COME STANDARD IN A DESTINY)

B. Dramatic Hallway Entrance with huge wardrobe storage and solid wood lend-a-hand grab bar. (365RL)

C. One-Piece "Radius" Fiberglass Showers with Glass Shower doors. A shower seat & Deluxe adjustable shower head. Each shower also comes with a built in sky light. (ALL OF THESE FEATURES COME STANDARD IN A DESTINY)

D. All Destiny Entertainment Centers come standard with a 40" HD LCD TV, hard wood cabinetry and DVD/CD player with surround sound audio package. (355RE Shown Here with Retractable TV)

E. Industry First: Dual lavy sinks in Bathroom/Bedroom Super Slide. Residential hardwood cabinetry, Corian® counter and additional wardrobe and linen cabinets throughout the bathroom. (355RE)

F. Large Bedside Dresser. True hardwood surface and framing. Full extension drawers and hardwood drawer/door fronts. Convenient 110v outlets on both sides of the bed. (365RL Shown).

G. Destiny Kitchens come with dual ovens. A 30" Convection Microwave/Oven over the 3-burner cooktop with cover. There is also a 22" conventional oven below. Corian® counters are used throughout. The cabinet door hardware is 5" designer residential pulls. The Kitchen has a large 8 cu ft. refrigerator with adjustable thermostat and a side pantry with pull out drawers. (ALL STANDARD IN A DESTINY)

H. Below counter Swing-Out storage compartment, for those extra cans, and spices. (On Select Models)

I. Large Double-Bowl Stainless Steel sinks and pull out Spray Faucet. Corian® Flush mount Sink Lids are also provided. (ALL STANDARD IN A DESTINY).



Popular Options



A. Plush Recliner Theater Seating by Flexsteel®.

B. Stackable Washer/Dryer.

C. Full Body Paint.

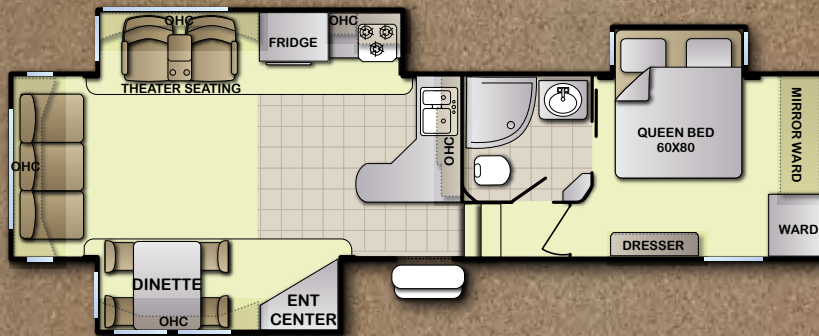
D. Stainless Steel Appliance Package. (Shown with 4 door 12 cu ft refrigerator)

E. Slide-Out Basement Storage Tray. Slides out both directions w/800lb capacity.

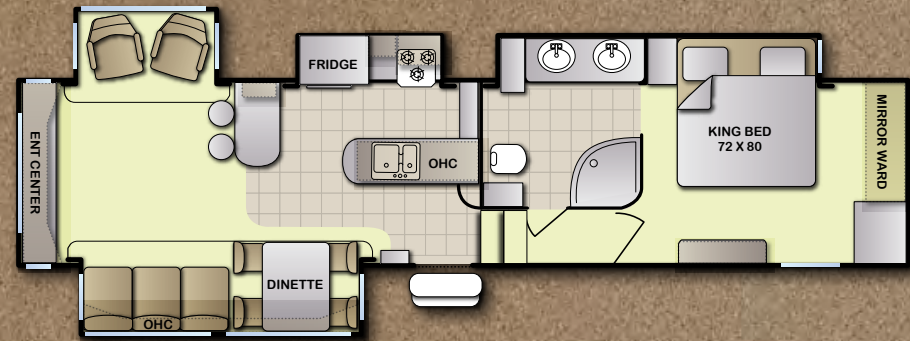


Available Floor Plans

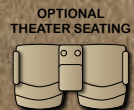
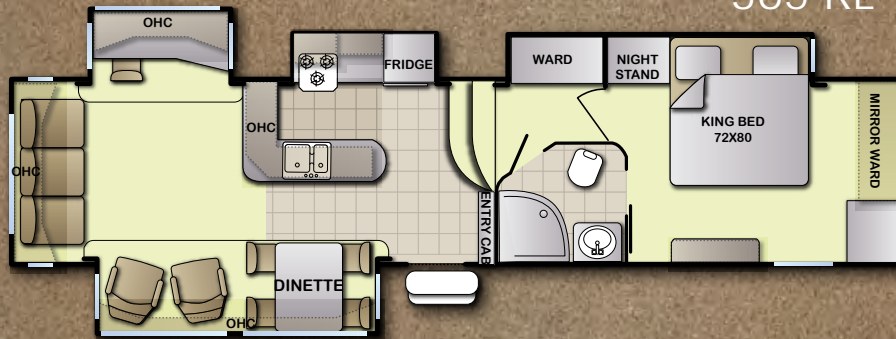
325 RL



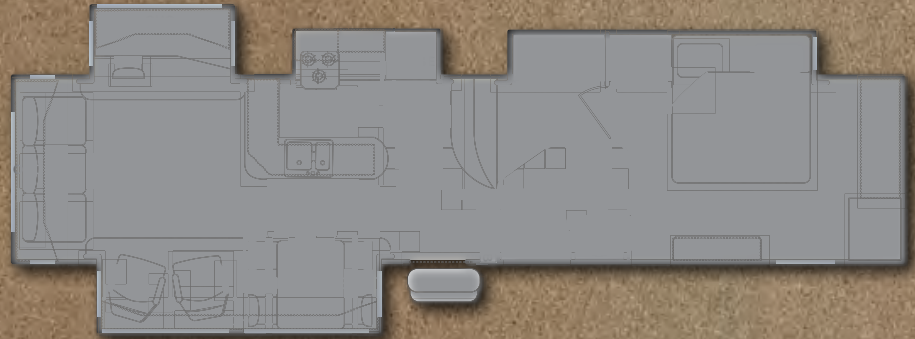
355 RE



365 RL



Coming Soon

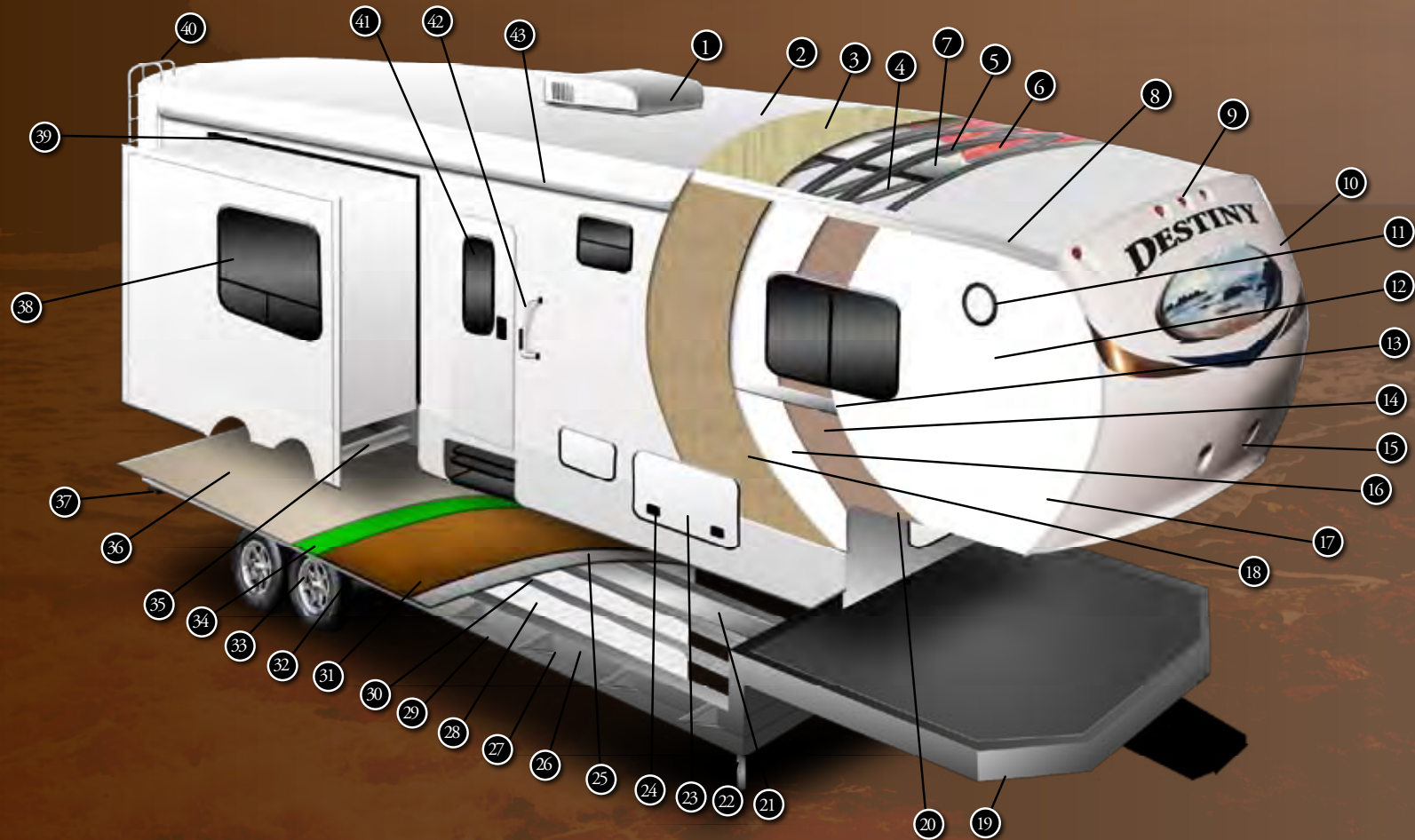


Specifications

MODEL	FLOOR LENGTH	OVERALL WIDTH	OVERALL HEIGHT*	HEIGHT W/O A/C	GVWR (lbs)	DRY WEIGHT (lbs)	CCC (lbs)**	HITCH WEIGHT (lbs)	TIRE SIZE	FRESH WATER	GRAY/BLACK
325 RL	33' 3/4"	96"	12'10"	12'1"	TBD	TBD	TBD	TBD	16"	75	90/45
355 RE	37'8"	96"	12'10"	12'1"	15,500	11,660	3,840	2,590	16"	75	90/45
365 RL	37'8"	96'	12'10"	12'1"	15,500	11,830	3,670	2,790	16"	75	90/45

*From ground to top of A/C, **Weight of water, LP gas and options are not included in Payload, ***All weights are estimated at time of printing

Construction



- | | | |
|--|---|--|
| 1. 15,000 BTU A/C | 16. High Density Solid Block Insulation | 30. 2x3 Double Welded Aluminum Floor Joists 16" OC |
| 2. One-Piece EPDM Seamless Rubber Roof | 17. High-Gloss Gel Coated Fiberglass (STD) | 31. 5/8" Laminated Seamless Decking |
| 3. 3/8" Decking (Full Walk On Roof) | 18. Luan Substrate Backing | 32. Equa-Flex Suspension |
| 4. Prewired & Dbl Trussed for Bedroom A/C | 19. Symmetrically Designed Chamfered Frame (45 degree)
Better Aerodynamics | 33. 16" Aluminum Wheels (8-Lug)/EZLube |
| 5. 5" Galvanized Steel Truss Rafters 16"OC | 20. 3" Aluminum Stringer | 34. Residential Style Carpet Pad |
| 6. Dual Layered Fiberglass Insulation | 21. Residential Large 3" Ducted Heat (In-Floor) | 35. Rack & Pinion Electric Slide System |
| 7. Aluminum Wrapped A/C Ductwork | 22. Easy-Use Adjustable Snap Jack Pins | 36. Cold Crack Resistant 100mil Linoleum |
| 8. Heavy Duty Aluminum Headers | 23. Heavy Duty Insulated Baggage Doors | 37. Electric Rear Jacks |
| 9. Exterior Clearance Lights | 24. 203 cu. ft. of Ext Storage w/Slam Latch (Unobstructed) | 38. Solar Reflective Glass(Blocks 96% UV/Rays) |
| 10. Aero-Dynamic Fiberglass Front Cap | 25. Additional Flex Foil Insulation Barrier | 39. Triple Sealed Slide Outs |
| 11. Exterior Security/Scare Lights | 26. Powder-Coated 12" Steel "Rolled" I-Beam | 40. Rear Ladder |
| 12. Welded 2" Aluminum Wall Studs | 27. Fully Welded Outriggers | 41. 30" Entry Door w/ Large Window |
| 13. Galvanized Metal Backing Strips | 28. High Density Solid Block Insulating Foam (Laminated) | 42. Fold-Away Grab Handle |
| 14. 1/8" Luan Decorative Wallboard | 29. Heated & Enclosed Underbelly, Water Lines & Valves | 43. Power Awning w/ Weathershield |
| 15. LED Hitch Vision Lights | | |

Features

INTERIOR

- TV-40" LCD w/ DVD in Living Room
- Corian® - Solid Surface Counter Tops
- Solid Hardwood Cabinet Stiles (Frames)
- 74" Sofa Bed w/Air Mattress/Bottom Drawer (1-Touch)
- Solid Hardwood Cabinet Doors & Drawers (Glazed & Antiqued)
- Solid Hardwood Dresser Tops
- Wireless Remote (Multi Function System)
- 6' 7" Tall Living Area Slide Outs w/Oversized Overhead Cabinets
- 100mil High End Linoleum (Cold Crack Resistant)
- DVD/CD W/ Surround Sound Audio Package
- Central Vacuum System w/Sweepway Inlet
- Oil-Rubbed Bronze Hardware
- Upgraded Lighting Package (Oil-Rubbed Bronze)
- Full Length Drawer Glides (22" Deep - Galley)
- Residential Carpeting w/Padding
- Hardwood Interior Grab Handle
- Cable TV Jacks & Satellite Hook UP
- Digital TV Antenna w/Booster
- Ceiling Fan
- Pleated Day/Night Shades
- 2 Recliners (Opt on 325RL)
- Carbon Monoxide Detector
- Systems Monitor Panel

EXTERIOR

- High Gloss Gel-Coated Exterior Fiberglass
- Solar Reflective Windows
- Double Welded Aluminum Framed Sidewalls
- 16" Aluminum Wheels (8-Lug)
- Trail Air Equa Flex Suspension
- 203.8 cubic feet Drop Frame Pass-Through Storage
- Sub-Floor Basement Storage Compartments (N/A on 325RL)
- Unobstructed Pass-Through Storage
- Fully Enclosed Underbelly & Enclosed Dump Valves
- Tankless Water Heater (On Demand Hot Water)
- Turn EZ Design (Front Cap & Chassis Engineering)
- Reflectix® Insulation (Floors & Ceiling)
- Universal Docking Station
- Extra Large & Insulated Radius Slam Latch Doors
- Swing Arm No-Mess Disposal System
- Integrated "LED" Hitch Lights in Front Cap
- Power Awning w/Weathershield
- 30" Entry Door w/Lighted Threshold & Full View Window
- Roof Ladder and Gel-Coated Rear Fiberglass Rear Cap
- Laminated Floor w/Seamless Decking
- 5" Galvanized Steel Truss Roof
- 7,000 lb. Axles
- Quad Entry Step
- Outside Speakers
- Whole House Water Filtration System
- 12V Battery Disconnect (In Pass Through)
- Front Power Jacks

EXTERIOR (CONTINUED)

- Power Rear Jacks
- Undermount Spare Tire & Carrier
- Patio Scare Lights
- Black Tank Flush System Hook Up
- 50 AMP Service w/Detachable Cord
- 15,000 BTU Air Conditioning
- Electric Slide Outs w/Independent Controls
- Ducted Forced Air Heat to Underbelly
- Basement Storage Hook Ups (Cable, TV, 110)
- Large Pivoting Entry Assist Handle
- Snap Jack Pins
- 40,000 BTU Furnace
- Exterior Shower w/ Hot & Cold Water
- RG-6 Coaxial Cable Hook Up
- "R" Factors: Sidewalls = R-11
Floor = R-21
Roof = R-32

GALLEY

- Corian® Galley Counter Tops & Sink Covers
- "Comfort Air" Fan w/Remote
- 30" Convection Microwave Oven
- Extra-Large Stainless Steel Sink w/Pull-Out Spray Faucet
- Pull out Pantry Drawers w/Hardwood Fronts
- Additional Pull-Out Pantry w/Solid Maple Butcher Block
- XL Full Extension Drawer Glides
- Free Standing Dinette w/Table & Chair Storage
- 22" Oven W/3 Burner Cooktop & Range Cover
- Hardwood Wine Rack
- XL Double Door Refer (8cu ft) w/Raised Inserts

BEDROOM

- TV-32" LCD w/ DVD in Bedroom
- 78" Bedroom Ceiling Height
- King Bed w/Deluxe Pillow Top Mattress (Queen on 325RL)
- Residential Bedding/Pillow Shams/Throw Pillows
- Deluxe Headboard Styling
- Outlets on Both Sides of Bed
- Hardwood Nightstands & Bedside Shelves (W/A)
- His/Her Directional Reading Lights (Over Bed)
- Solid Hardwood Dressers w/Full Extension Glides
- Lock Box Security Safe
- Large Front Mirrored Wardrobe w/Shelves
- Washer/Dryer Prep for Stackable Washer/Dryer
- Pre-Wire & Frame for 2nd A/C

BATHROOM

- One-Piece "Radius" Fiberglass Shower w/Glass Shower Door
- Skylight Over Shower
- Deluxe Adjustable Shower Head
- Corian® Lavy Counters
- 40" High Vanity with Mirrored Med Cabinet (N/A 355RE)
- Deluxe Vanity Lighting
- Porcelain Toilet w/Foot Pedal

Upgrades

CAMP IN COMFORT PACKAGE (Mandatory)

- Cable TV Jacks & Satellite Hook UP
- Digital TV Antenna w/Booster
- High Gloss Gel-Coated Exterior Fiberglass
- Solar Reflective Windows
- Double Welded Aluminum Framed Sidewalls
- 16" Aluminum Wheels (8-Lug)
- Trail Air Equa Flex Suspension
- 203.8 cubic feet Drop Frame Pass-Through Storage
- Universal Docking Station
- Extra Large & Insulated Radius Slam Latch Doors
- Swing Arm No-Mess Disposal System
- Integrated "LED" Hitch Lights in Front Cap
- Power Awning w/Weathershield
- Laminated Floor w/Seamless Decking
- 5" Galvanized Steel Truss Roof
- Outside Speakers
- Whole House Water Filtration System
- 12V Battery Disconnect (In Pass Through)
- Front Power Jacks
- Power Rear Jacks
- Undermount Spare Tire & Carrier

LUXURY PACKAGE (Mandatory)

- TV-40" LCD w/ DVD in Living Room
- Corian® - Solid Surface Counter Tops
- Solid Hardwood Cabinet Stiles (Frames)
- 74" Sofa Bed w/Air Mattress/Bottom Drawer (1-Touch)
- Solid Hardwood Cabinet Doors & Drawers (Glazed & Antiqued)
- Solid Hardwood Dresser Tops
- Wireless Remote (Multi Function System)
- DVD/CD W/ Surround Sound Audio
- Central Vacuum System w/Sweepway Inlet
- Ceiling Fan
- Day/Night Shades
- Tankless Water Heater (On Demand Hot Water)
- 30" Entry Door w/Lighted Threshold &

- Full View Window
- Patio Scare Lights
- "Comfort Air" Fan w/Remote
- 30" Convection Microwave Oven
- Pull out Pantry Drawers w/Hardwood Fronts
- Additional Pull-Out Pantry w/Solid Maple Butcher Block
- Free Standing Dinette w/Table & Chair Storage
- Range Cover
- XL Double Door Refer (8cu ft) w/Raised Inserts
- TV-32" LCD w/ DVD in Bedroom
- King Bed w/Deluxe Pillow Top Mattress (Queen on 325RL)
- Residential Bedding/Pillow Shams/Throw Pillows
- Lock Box Security Safe
- Washer/Dryer Prep for Stackable Washer/Dryer
- Pre-Wire & Frame for 2nd A/C
- One-Piece "Radius" Fiberglass Shower w/Glass Shower Door
- Skylight Over Shower

OPTIONS

- 12 Cubic Foot Four-Door Refer
- Stainless Steel Appliance Package
- 2nd A/C 13.5K BTU (Independent Thermostat)
- Electric Fireplace
- Leather Sofa
- Leather Recliner(s)
- Theater Seating (365RL)
- High Back Desk Chair
- Dual Pane Windows (Solar Reflective)
- Basement Sliding Storage Tray
- Full Body Paint
- Trail Air Hitch
- Slide Awning (Triple Slide)
- Slide Awning (Quad Slides)
- Wireless Back Up Camera
- Generator Ready (5.5 KW)
- (5.5 KW) Generator
- Solar Panel Prep
- Washer/Dryer (Stackable)

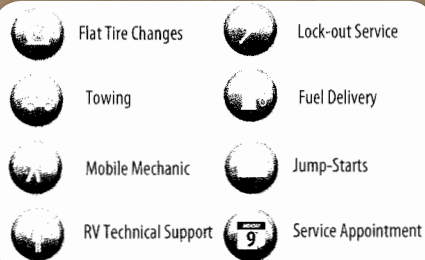


floor and ceiling, Destiny will handle the extreme weather. Destiny features a "Fully Enclosed Underbelly" that also encloses the termination valves. Both your holding tanks and valves are heated by your furnace through forced heat and your outside shower is enclosed in your utility docking station.

Hot or Cold, Arizona or Canada, Destiny has got you covered. From layered and laminated sidewalls, end walls and floors that use high density block foam insulation to the dual layered fiberglass insulated roof with a 3/8" thick decking, to additional Reflectix® insulation barriers in your

Coach-Net

MORE THAN 30,000 SERVICE PROVIDERS ARE ON CALL. UNLIMITED 24x7 ASSISTANCE!
EXCLUSIVE BENEFITS



Camping has never been easier!
With Lippert Components
wireless remote control systems.

Trailair's Equa-Flex™ Equalizer suspension
ensures a smoother ride, more stable towing
and improved coach and vehicle safety



Front Cap Aerodynamics: The Destiny fiberglass
front cap is engineered to maximize fuel economy by
reducing the drag coefficient. This design also gives
you the maximum turn radius as well as an incredibly
large front wardrobe.

Eco-Friendly

Here at MVPRV, we are extremely sensitive and passionate about the
environment and everything that involves a cleaner life on earth. Lives
depend on a greener future, but the change should come from within.
Reduce, Reuse & Recycle! This philosophy is evident throughout the
company, from our business offices to our production floor in the materials
we use. "You must be the change you wish to see in the world".



Destiny is built in a 500,000 sq ft state of the art production facility on 26 acres
in Riverside, CA by MVPRV. We take pride in everything we build. We design
and build our products in house, which assures our high quality standards.
We also house all of our building materials inside our plants, so they are not
exposed to the elements. Our goal at MVPRV is to continue to build the best
product possible. Thank you so much for your support!!!

Decors

Tuscany Sunset

Living Room

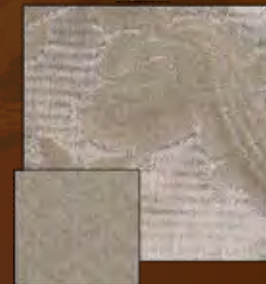


Bedroom

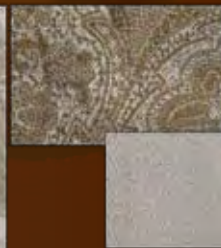


Legacy

Living Room



Bedroom



MVP RV
5300 Via Ricardo
Riverside, CA 92509
(951) 848 4288

WWW.MVPRV.COM

DISCLAIMER: All information contained in this brochure is believed to be accurate at the time of publication. However, during the model year, it may be necessary to make revisions. MVP reserves the right to make all such changes without notice. Please contact your local MVP dealer and confirm design, specifications, equipment, materials and all issues that pertain to your purchasing decision.