



SKYLINE CUSTOMER SATISFACTION

Skyline customer satisfaction is more than just a promise. We believe you deserve quality in every aspect of ownership. To ensure your continued satisfaction, we're dedicated to providing you with a quality product along with the very best service available in our industry. Skyline's "Commitment of Excellence" will be a source of pride and satisfaction for you. Contact your Skyline Dealer for details.

SOLID CONSTRUCTION



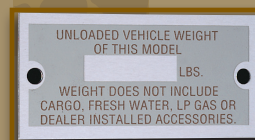
SHAKE SIMULATOR

A shake-simulator test is performed for 10 minutes to detect any problems before leaving the factory.



WATERTIGHT TESTED

All units are tested for 15 minutes in a high-pressure shower spray to guarantee that they are watertight.



ACTUAL WEIGHTS, NOT ESTIMATED WEIGHTS

For your safety and peace of mind, Skyline weighs every recreational vehicle at the factory. Other manufacturers use estimated weights which can be in error by as much as 20 percent. Insist your recreational vehicle includes an actual weight next to the entry door.

NO-NONSENSE WARRANTY

Manufacturing defects reported to Skyline within one year after original retail delivery of your new Travel Trailer by an authorized dealer will be corrected without charge and within reasonable times. Excluded are misuse (including lack of reasonable maintenance), minor imperfections, alterations, and dealer or owner improper transportation, installation, or hookup.

This warranty gives you specific legal rights. You may have other rights which vary from state to state.

Skyline's suppliers often provide additional warranties on their components beyond the Skyline factory bumper-to-bumper warranty. For example — the range, water heater, furnace, convertor, air conditioner, refrigerator, microwave and awning carry two-year warranties. Ask your dealer for full details.

Manufacturer's Notice: All specifications, equipment, and prices are subject to change without prior notice. Production of all models subject to seasonal scheduling. Skyline Corporation reserves the right to improve a model without incorporating these changes in similar models produced at an earlier date.

Consult your automobile dealer and your recreational vehicle dealer to assure the proper match between tow vehicle and trailer. Tow vehicle and recreational unit must be properly equalized for efficient product performance and safety. Before you purchase your recreational vehicle, carefully consider the number of people it will accommodate and its end use. Manufacturer's load capacity restrictions and recommendations must be followed for safe and efficient product performance.

Your Retailer, an independent contractor, who is not an agent of Skyline Corporation, is the party responsible for your purchase contract and any additions, deletions, alterations, or attachments made to or in your recreational vehicle.



BOBCAT

2012 Travel Trailers



Your local **BOBCAT** dealer is:

Member
RVIA
RECREATION VEHICLE
INDUSTRY ASSOCIATION

Go RVing®

SKYLINE
BRINGING AMERICA HOME. BRINGING AMERICA FUN.

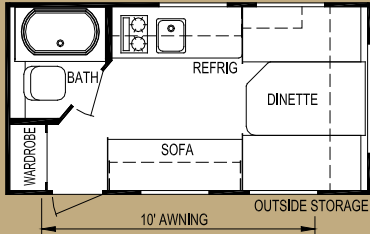
For the name of your nearest Skyline-built RV dealer, call:
Hemet, California 1-800-733-4250

Or visit us at our Web Site at www.skylinecorp.com

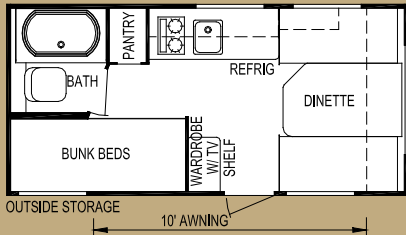
SKYLINE
BRINGING AMERICA HOME. BRINGING AMERICA FUN.

Effective March 2011

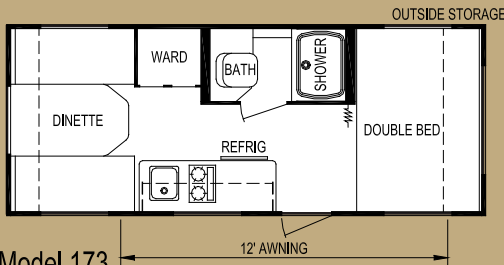
Travel Trailers



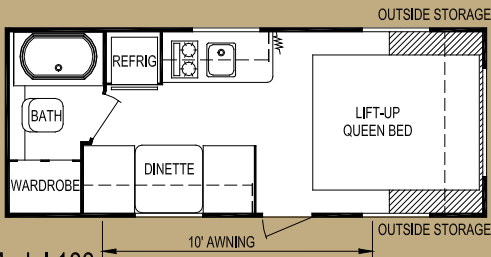
Model 140



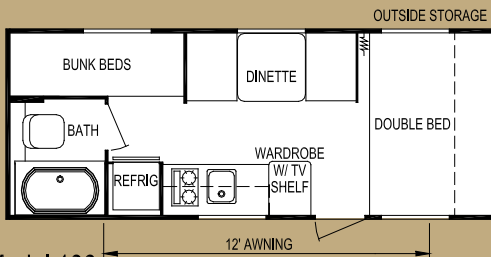
Model 162



Model 173



Model 183



Model 186



Standard Features

Interior

Cabinets

- High Pressure Laminate Countertops

Decor

- Color-Coordinated Designer Interiors
- Embossed Vinyl Flooring
- Padded Dinette Seat Cushions
- Mini-Blinds at All Windows Except Bunks

Kitchen & Living Area

- 3 cu. ft. Dometic® Gas/Electric Refrigerator
- Wedgewood® Two-Burner Range Top
- 0.7 cu. ft. Dometic® Microwave Oven w/Turntable & Clock
- Acrylic Kitchen Sink w/Faucet
- 12 Volt Demand Water Pump
- 16,000 Btu Furnace
- 13,500 Btu Air Conditioner
- 35 amp 12 Volt Power Convertor w/120 Volt Load Center
- 6 Gallon Gas Water Heater
- TV Antenna w/Living Area Jack

Bath

- ABS Tub w/Tub Faucet, Shower Hose & Head
- Shower Curtain
- Hand Flush Thetford Toilet
- Towel Ring & Toilet Paper Holder

Exterior

Roof Construction

- Seamless One-Piece Aluminum Roof
- Awning Drip Rail & Down Spouts

Wall Construction

- Wall Studs on 16" Centers (Maximum)
- Steel Strap Reinforcement on Walls for Superior Durability
- R-7 Settle-Resistant Insulation
- Twist Locks on All Storage Doors
- Clamp-Ring Radius Corner / Dark Tint Glass Windows
- Patio Convenience Light
- Radius Entry Door w/Screen
- Assist Handle at Entry Door
- Fiberglass Exterior w/Custom Styled Exterior Graphics
- Welded Aluminum Frame Sidewalls & Endwalls
- Laminated Sidewall Construction w/Block Foam Insulation, Steel Cabinet Backers, Lauan Exterior Panel Under Fiberglass Exterior
- Front Window w/Integral Rockguard

Chassis Construction

- Cambered Tubular Steel Chassis w/Steel Outriggers
- Battery Rack
- Chassis-Mounted Entry Step
- Electric Brakes at All Wheels
- Goodyear® Radial Tires
- Aluminum Wheels (Steel Spare)
- Spare Tire & Carrier
- Safety Chains & Breakaway Safety Switch
- Two Stabilizer Jacks
- Sidewinder Tongue Jack w/Foot

Floor Construction

- 5/8" Tongue & Groove Floor Decking
- Tightly Sealed Woven Polyethylene Underbelly

Features

- Single 20 lb. LP Propane Tank
- Holding Tanks w/Drain Outlet
- Rear Bumper w/Sewer Hose Carrier
- A&E® Sunchaster Side Awning

Security & Safety

- Smoke Detector
- Propane Leak Detectors
- Carbon Monoxide Alarm
- Flush Door Latch w/Integral Dead Bolt Lock
- Fire Extinguisher

Specifications

| Model | | 140 | 162 | 173 | 183 | 186 |
|----------------|--------------------------------------|---------------|---------------|---------------|---------------|---------------|
| Weights | Unloaded Vehicle Weight (see Note 2) | 2,350 | 2,550 | 2,725 | 2,825 | 2,775 |
| | Dry Hitch Weight | 300 | 400 | 325 | 325 | 350 |
| | Dry Axle Weight | 2,050 | 2,150 | 2,400 | 2,500 | 2,425 |
| | GVWR (Total Capacity of Trailer) | 3,850 | 3,850 | 3,850 | 3,850 | 3,850 |
| | Carrying Capacity (see Note 2) | 1,400 | 1,200 | 1,025 | 925 | 975 |
| Accommodations | Sleeping (standard / optional) | 3 | 4 | 3 | 3 | 5 |
| | Bed Size | N/A | (2) 32" x 75" | 54" x 80" | 60" x 74" | 54" x 80" |
| | Second Bed Size | N/A | N/A | N/A | N/A | (2) 28" x 75" |
| | Dinette Size | 52" x 80" | 52" x 80" | 52" x 80" | 30" x 76" | 30" x 75" |
| | Sofa | 22" x 59" | N/A | N/A | N/A | N/A |
| Measurements | Exterior Length (see Note 3) | 15'-10" | 17'-2" | 20'-1" | 20'-4" | 20'-6" |
| | Exterior Width (see Note 3) | 84" | 84" | 84" | 84" | 84" |
| | Exterior Height (see Note 3) | 8'-8" | 8'-8" | 8'-8" | 8'-8" | 8'-8" |
| | Interior Height | 73" | 73" | 73" | 73" | 73" |
| Capacities | Fresh Water System (gallons) | 18 | 18 | 18 | 26 | 26 |
| | Gray Water Tank (gallons) | 15 | 15 | 15 | 15 | 15 |
| | Black Water Tank (gallons) | 10 | 10 | 10 | 10 | 10 |
| | Air Conditioner Size (Btu) | 13,500 | 13,500 | 13,500 | 13,500 | 13,500 |
| | Awning Size | 10' | 10' | 12' | 10' | 12' |
| | Convertor Size (amps) | 35 | 35 | 35 | 35 | 35 |
| | Furnace Rating (Btu) | 16,000 | 16,000 | 16,000 | 16,000 | 16,000 |
| | Propane Gas Capacity (pounds) | 20 | 20 | 20 | 20 | 20 |
| | Tires | ST205/75R14-C | ST205/75R14-C | ST205/75R14-C | ST205/75R14-C | ST205/75R14-C |
| | Water Heater (gallons) | 6 | 6 | 6 | 6 | 6 |

(1) All weights, dimensions, and capacities shown are approximate values.
(2) Unloaded vehicle weight and carrying capacity will vary depending upon optional equipment. Full propane tanks are factored into carrying capacity. Skyline weighs every unit at the factory. See trailer weight information label located inside the front entry door for specific unloaded vehicle weight and cargo carrying capacity.
(3) Dimensions stated to industry standards. Exterior length includes approximately a four foot hitch on travel trailers. Exterior height includes air conditioner, if installed. Exterior width does not include the width of the awning, if installed.