

2012 R-VISION®

ULTRA-LITES

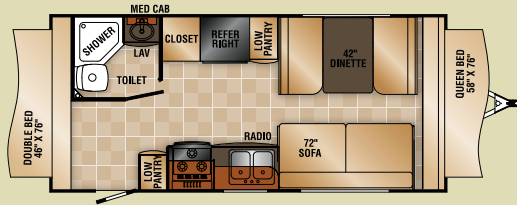


2012 R-VISION® ULTRA-LITE TRAVEL TRAILERS

THE WORLD IN R-VISION®

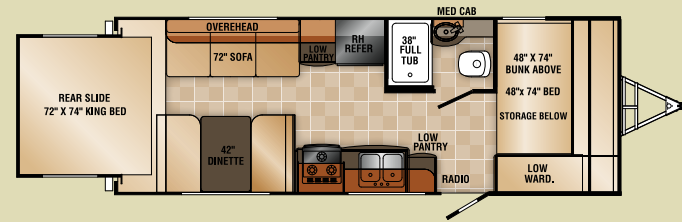
TRAIL SPORT FLOORPLANS

19E

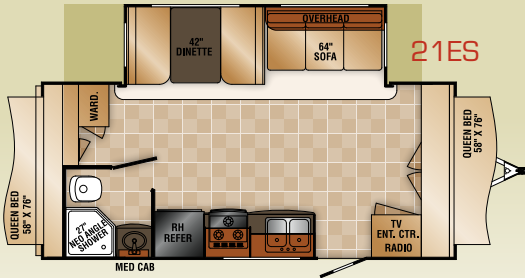


EXPANDABLE

23RS

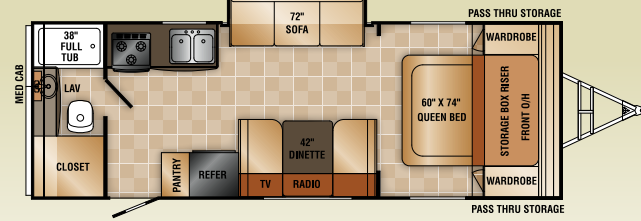


21ES

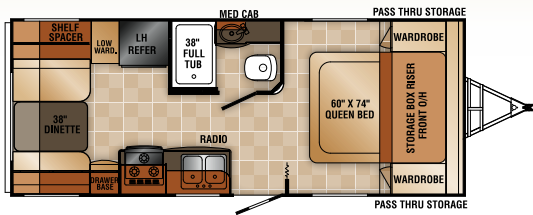


EXPANDABLE

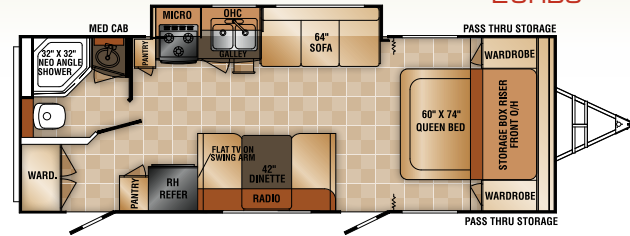
25S

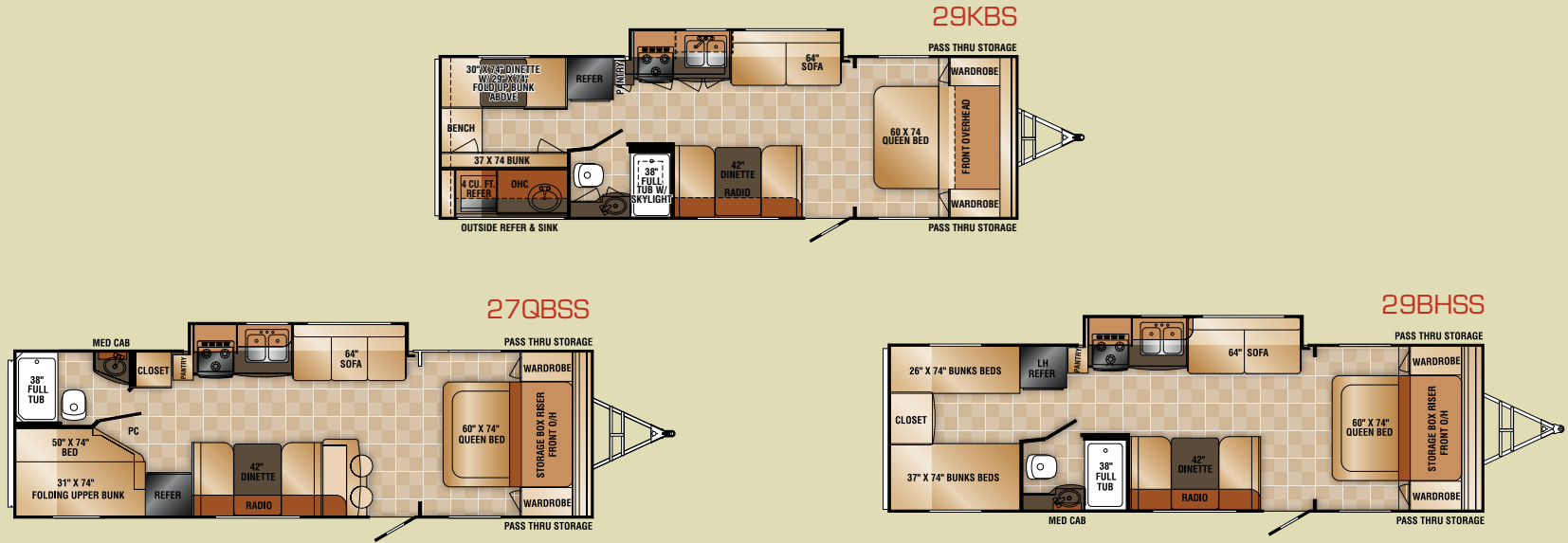


21RD



26RBS





ULTRA-LITE TRAIL SPORT TRAVEL TRAILERS | SPECIFICATIONS

WEIGHTS	19E	21RD	21ES	23RS	25S	26RBS	27QBSS	29KBS	29BHSS
GROSS VEHICLE WEIGHT RATING (LB.)	6,160	6,160	6,160	6,160	6,160	6,160	6,160	6,160	6,160
DRY HITCH WEIGHT (LB.) (APPR.)	433	470	495	468	426	440	423	TBD	406
DRY AXLE WEIGHT (LB.) (APPR.)	3,098	3,170	3,925	3,885	3,650	3,900	4,146	TBD	4,340
DRY UNLOADED VEHICLE WEIGHT (LB.) (APPR.)	3,531	3,640	4,420	4,353	4,076	4,340	4,569	TBD	4,746
NET CARRYING CAPACITY (LB.) (NCC)	2,629	2,520	1,740	1,807	2,084	1,820	1,591	TBD	1,414
AXLE RATING (LB.)	2,800	2,800	2,800	2,800	2,800	2,800	2,800	TBD	2,800
TIRE LOAD RATING (LB.)	1,760	1,760	1,760	1,760	1,760	1,760	1,760	TBD	1,760
TIRE SIZE (ST205/75R14C)	14"	14"	14"	14"	14"	14"	14"	14"	14"
TIRE LOAD RANGE	C	C	C	C	C	C	C	C	C
MEASUREMENTS									
OVERALL LENGTH	21'-5"	23'-11"	22'-5"	26'-5"	27'-3"	28'-2"	30'-11"	TBD	31'-8"
OVERALL HEIGHT (A/C INCLUDED)	9'-8"	9'-8"	9'-8"	9'-8"	9'-8"	9'-8"	9'-8"	9'-8"	9'-8"
EXTERIOR WIDTH (W/O AWNING)	8'	8'	8'	8'	8'	8'	8'	8'	8'
TANK CAPACITIES									
GREY TANK	30 GAL.	30 GAL.	30 GAL.	30 GAL.	30 GAL.	30 GAL.	30 GAL.	30 GAL.	30 GAL.
BLACK TANK	30 GAL.	30 GAL.	30 GAL.	30 GAL.	30 GAL.	30 GAL.	30 GAL.	30 GAL.	30 GAL.
FRESH WATER CAPACITY	36 GAL.	36 GAL.	36 GAL.	36 GAL.	36 GAL.	36 GAL.	36 GAL.	36 GAL.	36 GAL.
L.P. TANK (TWO 20 LB. TANKS)	S	S	S	S	S	S	S	S	S

BODY CONSTRUCTION

- » 6" I-Beam Frame Powder Coated
- » White Wheels
- » (4) Radial Tires
- » Frame Mounted Entry Step - Single Steps
- » Frame Mounted Entry Step - Double Steps *(Std. on 21ES)*
- » Tandem Axles w/10" Electric Brakes
- » EZ-Lube®- (2)
- » (4) Stabilizer Jacks *(Std. on 19E, 21ES)*
- » Galvanized Wheel Wells
- » Radius Exterior Storage Door w/Door Catch
- » Front Diamond Plate
- » L.P. Tank Cover
- » Molded Abs Fender Skirts *(N/A on 21ES)*
- » Smooth Fiberglass Exterior Rear Wall
- » Expandable Tent w/Tent Lock System *(Std. on 19E, 21ES)*
- » Vinyl Exterior Graphics

APPLIANCES AND ACCESSORIES

- » Double Door 6 Cu. Ft. Norcold® Refrigerator
- » Black Panel Refrigerator Door
- » Wedgewood 3-Burner Cooktop
- » Lighted Powered Range Hood
- » Pre-Wired for Microwave

INTERIOR

- » Fulton Cherry Cabinetry
- » Square Frame Flat Panel Cabinet Doors
- » Decor Glass in Dinette OHC
- » Laminate Kitchen and Bath Countertops
- » Laminate Dinette Booth Table Top
- » Armstrong® Linoleum Throughout
- » Wood Grain Bath Door
- » Mini Blinds Throughout (Except Bunk Location)
- » Fabric Close-off Curtain to Bedroom Main Floor of Coach *(N/A on 19E, 21ES, 23RS)*
- » Fabric Close-off Curtain to Bedroom in Expandable Location *(Std. on 19E, 21ES)*

- » Fabric Close-off Curtain Bunks *(Std. on 23RS, 27QBSS, 29BHSS)*
- » Bedspread w/Reverse Shams *(Std. on 21RD, 25S, 26RBS, 27QBSS, 29BHSS)*

FURNITURE

- » Queen Bed *(N/A on 19E, 21ES)*
- » King Bed *(Std. on 23RS)*
- » Lower Bed w/Angle Mattress
- » Bunk Bed Only Vinyl Back *(Std. on 27QBSS)*
- » Upper Bunk Bed and Lower Bunk Bed *(Std. on 23RS)*
- » Double Bunk Beds *(Std. on 29BHSS)*
- » Bunk Beds w/Vinyl Backs, Upper and Lower *(Std. on 29BHSS)*
- » Expandable Tent *(Std. on 19E, 21ES)*
- » Fabric Covered Jackknife 64" Sofa *(Std. on 26RBS, 27QBSS, 29BHSS)*
- » Fabric Covered Jackknife 72" Sofa *(Std. on 19E, 23RS, 25S)*
- » Booth Dinette w/Fabric Cushions and Vinyl Backs

ELECTRICAL SYSTEMS AND LIGHTS

- » Electrical Management System - 30 AMP
- » 30 AMP Detachable Power Cord
- » 55 AMP Converter w/Charger
- » Porch Light
- » Hitch Light on Exterior Front Wall
- » Light in Storage Area Door Side Compartment
- » Exterior Light by Hook-Up Area Road Side
- » Patio Side 120V Exterior Recept
- » Interior Ceiling Light Switches at Entrance Door
- » Double Pancake All Ceiling Locations
- » Decor Lighting Over Dinette in Ceiling *(N/A on 25S, 26RBS, 27QBSS, 29BHSS)*
- » Decor Light in Bottom of Dinette Overhead Cabinet *(Std. on 25S, 26RBS, 27QBSS, 29BHSS)*
- » Decor Lighting on Wall In-between Dinette and Sofa *(Std. on 21ES)*

- » Double Pancake Above Bed *(N/A on 19E, 21ES, 23RS)*
- » Single Pancake Lights at Bunk Locations *(Std. on 23RS, 26RBS, 27QBSS, 29BHSS)*

PLUMBING AND LP SYSTEMS

- » Stainless Steel 50/50 Kitchen Sink w/High Rise Goose Neck Faucet
- » 6-Gal. Gas L.P. Water Heater
- » Water Heater By-Pass
- » (2) 20 lb. L.P. Tanks w/Automatic Changeover w/Cover
- » Rotocast Holding Tanks
- » Rotocast Fresh Tank

HEATING VENTS AND AIR CONDITIONING

- » 18M BTU Hydro Flame Electronic Ignition Furnace *(Std. on 19E)*
- » 20M BTU Hydro Flame Electronic Ignition Furnace *(N/A on 19E.)*
- » Gas Line Hook-Up at Front of Coach w/Quick Connect

WINDOWS, DOORS AND AWNINGS

- » Radius Windows
- » Safety Glass Windows
- » Galley Window
- » Skylight in Bathroom
- » Radius Entry Door w/Window, Dead Bolt and Screen Door
- » Bedroom Entry Door *(Std. on 26RBS)*
- » Exterior Entry Assist Entry Door Handle

OPTIONAL FEATURES

- » Chrome Trim Ring (4)
- » Spare Tire w/ Cover
- » Equa Flex™ Axles (2)
- » (4) Stabilizer Jacks *(N/A on 19E, 21ES)*
- » Electric Tongue Jack w/Light
- » (4) Aluminum Wheels
- » Exterior Storage Drawer *(23RS, 25S, 26RBS, 27QBSS, 29BHSS)*
- » Enclosed Underbelly
- » Roof Ladder *(N/A on 19E, 21ES, 23RS)*
- » Single Set of Frame Mounted Double Entry Steps *(N/A on 21ES)*
- » (2) Sets of Frame Mounted Double Entry Steps *(26RBS only)*
- » Quicksilver Edition (Grey Exterior w/Black Aluminum Wheels and Patio Awning w/Black Hardware)
- » Wedgewood Oven w/3-Burner Cooktop
- » Bi-Fold Stove Cover
- » Microwave
- » Sink Cover
- » Stereo Prep
- » AM/FM/CD/DVD/I-Pod/MP3 Stereo
- » TV Antenna w/Cable
- » 19" LCD TV
- » RVQ Grill w/Stand
- » Night Shades IPO V-Blinds All Locations Except Kitchen & Bunk Area
- » Bar Stools *(27QBSS only)*
- » Heated Bunk End Cushions *(19E, 21ES)*
- » 6-Gal. Gas/Electric (110) Water Heater
- » Tub Shower Surround
- » Acrylic Shower Door *(19E, 21ES, 26RBS)*
- » Acrylic Tub Door *(N/A on 19E, 21ES, 26RBS)*
- » Outside Shower
- » A/C 13,500 BTU
- » A/C 15,000 BTU *(N/A on 19E, 21ES)*
- » Fantastic Attic Fan
- » Patio Awning

TRAIL SPORT WOOD & DECOR OPTIONS



BLACK ACCENTED CABINETRY



GREEN



ELATION



DYNAMITE II

2012 EXTERIOR COLOR CHOICES



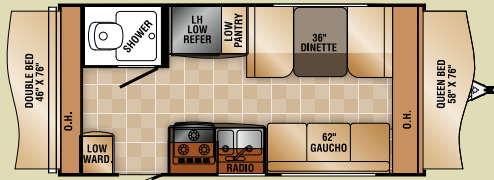
**TRAIL SPORT
QUICKSILVER
GREY**

CROSSOVER
**SANDSTONE
BEIGE**



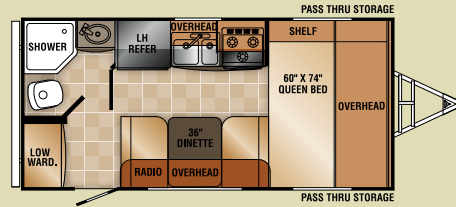
CROSSOVER FLOORPLANS

180T

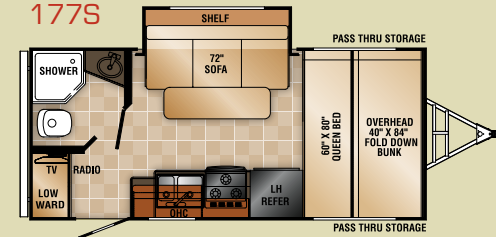


EXPANDABLE

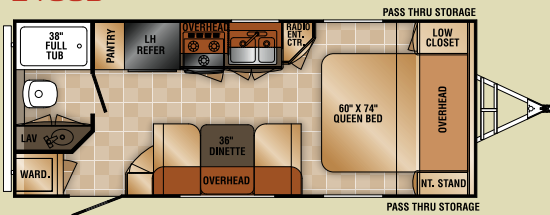
189QB



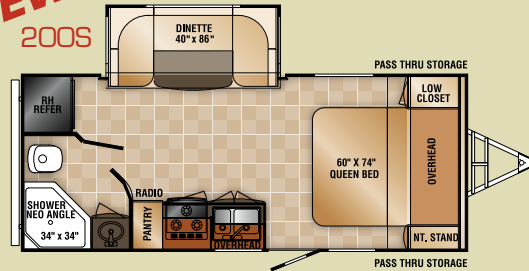
NEW!
177S



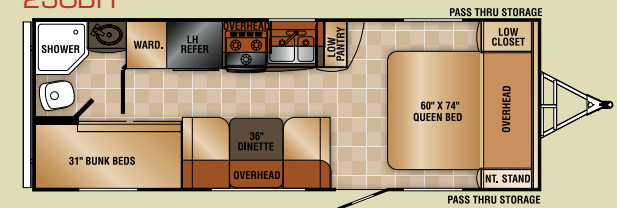
210QB



NEW!
200S



230BH



ULTRA-LITE CROSSOVER TRAVEL TRAILERS | SPECIFICATIONS

	180T	189QB	177S	200S	210QB	230BH
WEIGHTS						
GROSS VEHICLE WEIGHT RATING (LB.)	4,200	4,200	6,160	6,160	6,160	6,160
DRY HITCH WEIGHT (LB.) (APPR.)	305	377	395	275	330	535
DRY AXLE WEIGHT (LB.) (APPR.)	2,600	2,520	3,035	3,475	3,080	3,087
DRY UNLOADED VEHICLE WEIGHT (LB.) (APPR.)	2,905	2,897	3,430	3,750	3,410	3,622
NET CARRYING CAPACITY (LB.) (NCC)	1,295	1,303	2,730	2,410	2,750	2,538
AXLE RATING (LB.)	3,500	3,500	2,800	2,800	2,800	2,800
TIRE LOAD RATING (LB.)	1,760	1,760	1,760	1,760	1,760	1,760
TIRE SIZE (ST205/75R14C)	14"	14"	14"	14"	14"	14"
TIRE LOAD RANGE	C	C	C	C	C	C
MEASUREMENTS						
OVERALL LENGTH	19'-5"	19'-8"	20'-9"	22'-4"	23'-2"	25'-1"
OVERALL HEIGHT (A/C INCLUDED)	9'-7"	9'-7"	9'-7"	9'-7"	9'-7"	9'-7"
EXTERIOR WIDTH (W/O AWNING)	7'-6"	7'-6"	7'-6"	7'-6"	7'-6"	7'-6"
TANK CAPACITIES						
GREY TANK	25 GAL.	25 GAL.	30 GAL.	25 GAL.	25 GAL.	25 GAL.
BLACK TANK	10 GAL.	25 GAL.	30 GAL.	25 GAL.	25 GAL.	25 GAL.
FRESH WATER CAPACITY	30 GAL.	36 GAL.	36 GAL.	36 GAL.	36 GAL.	30 GAL.
L.P. TANK (TWO 20 LB. TANKS)	S	S	S	S	S	S

*Weights may vary by options.

** Tank manufacturer's listed water capacity (WC). Actual filled LP capacity is 80% of listing due to safety shut off required on tank.

BODY CONSTRUCTION

- » 6" I-Beam Frame Powder Coated
- » White Wheels
- » (2) Radial Tires *(Std. on 187E, 1890B)*
- » (4) Radial Tires *(N/A on 187E, 1890B)*
- » Frame Mounted Entry Step (Self Storing Double Step)
- » Single Axles w/10" Electric Brakes *(Std. on 177S, 187E, 1890B)*
- » Tandem Axles w/10" Electric Brakes *(N/A on 177S, 187E, 1890B)*
- » Galvanized Wheel Wells
- » Radius Front Wall Profile
- » Front Diamond Plate
- » L.P. Tank Cover
- » Smooth Fiberglass Exterior Rear Wall
- » Expandable Tent *(Std. on 187E)*
- » Vinyl Exterior Graphics

APPLIANCES AND ACCESSORIES

- » Single Door 5 Cu. Ft. Norcold® Refrigerator
- » Black Panel Refrigerator Door
- » Wedgewood 3-Burner Cooktop
- » Lighted Powered Range Hood
- » Pre-Wired for Microwave
- » Pre-Wired for Systems Monitor Panel

INTERIOR

- » Fulton Cherry Cabinetry
- » Square Frame Flat Panel Cabinet Doors
- » Linoleum Throughout
- » Wood Grain Bath Door
- » Mini Blinds Throughout (Except Bunk Location)
- » Fabric Close-off Curtain to Bedroom Main Floor of Coach *(N/A on 187E)*
- » Fabric Close-off Curtain to Bedroom in Expandable Location *(Std. on 187E)*
- » Fabric Close-off Curtain Bunks *(Std. on 230BH)*
- » Lower Bed Storage Bed Lid with Prop Rod *(Std. on 200S, 210QB, 230BH)*

FURNITURE

- » Queen Bed *(N/A on 187E)*
- » Bunk Bed *(Std. on 230BH)*
- » Fabric Covered Gaucho Sofa *(Std. on 187E)*
- » Expandable Tent *(Std. on 187E)*
- » U-Shaped Dinette *(Std. on 200S)*
- » Booth Dinette w/Fabric Cushions w/Vinyl Backs *(N/A on 177S, 200S)*

ELECTRICAL SYSTEMS AND LIGHTS

- » Electrical Management System - 30 AMP
- » 30 AMP Detachable Power Cord
- » 55 AMP Converter w/Charger
- » Porch Light
- » Hitch Light on Exterior Front Wall
- » Light in Storage Area Door Side Compartment
- » Exterior Light by Hook-Up Area Road Side
- » Patio Side 120V Exterior Recept
- » Interior Ceiling Light Switches at Entrance Door
- » Double Pancake All Ceiling Locations

PLUMBING AND LP SYSTEMS

- » Platinum Double Bowl Kitchen Sink w/High Rise Goose Neck Faucet
- » 6-Gal. Gas L.P. Water Heater
- » Water Heater By-Pass
- » (2) 20 lb. L.P. Tanks w/Automatic Changeover w/Cover
- » Rotocast Holding Tanks
- » Rotocast Fresh Water Tank

HEATING VENTS AND AIR CONDITIONING

- » 18M BTU Hydro Flame Electronic Ignition Furnace
- » Gas Line Hook-Up at Front of Coach

WINDOWS, DOORS AND AWNINGS

- » Radius Windows
- » Safety Glass Windows
- » Galley Window
- » Radius Entry Door w/Window, Dead Bolt and Screen Door
- » Exterior Entry Assist Entry Door Handle

OPTIONAL FEATURES

- » Chrome Trim Ring (2) Single Axle *(N/A on 200S, 210QB, 230BH)*
- » Chrome Trim Ring (4) Double Axle *(200S, 210QB, 230BH)*
- » Spare Tire Cover
- » Equa Flex™ Suspension - Single Axles *(N/A on 200S, 210QB, 230BH)*
- » Equa Flex™ Suspension - Tandem Axles *(200S, 210QB, 230BH)*
- » (4) Stabilizer Jacks
- » Electric Tongue Jack w/Light
- » (2) Aluminum Wheels *(N/A on 200S, 210QB, 230BH)*
- » (4) Aluminum Wheels *(200S, 210QB, 230BH)*
- » Enclosed Underbelly
- » Sandstone Editon (Tan Exterior w/Black Aluminum Wheels and Patio Awning w/Black Hardware)
- » Canadian RV Certification
- » Double Door 6 Cu. Ft. Norcold® Refrigerator *(N/A on 177S, 187E)*
- » Wedgewood Oven w/3-Burner Cooktop
- » Microwave
- » AM/FM/CD/DVD/I-Pod/MP3 Stereo
- » TV Antenna w/Cable
- » 19" LCD TV
- » Systems Monitor Panel - Battery Levels, Holding Tank Levels, & Water Pump Switch
- » RVQ Grill w/Stand
- » Night Shades IPO V-Blinds All Locations Except Kitchen & Bunk Area
- » Heated Bunk End Cushions *(187E only)*
- » 6-Gal. Gas/Electric (110) Water Heater
- » Outside Shower
- » A/C 13,500 BTU
- » Awning
- » Tub/Shower Surround

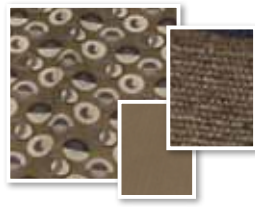
CROSSOVER WOOD & DECOR OPTIONS



BLACK ACCENTED CABINETRY



GREEN



ELATION



DYNAMITE II

ULTRA-LITES



YOUR LOCAL DEALER:

R-VISION®

"Quality Features for the Best Value in the Market"

WARRANTY: 12 month basic limited warranty. 5 year limited structural warranty.*

*Please review your RV's limited warranty in full for complete terms and conditions.

The actual overall length of the recreational vehicle may differ from that indicated in the brochure due to variances in the manufacturing process and/or installed components. The actual length may be greater or less than that indicated. Due to the large variety of options and floorplan arrangements available to our customers, actual weights for each unit can differ significantly. Monaco provides a weight sticker on each unit we produce which includes that unit's tank capacities and approximate weight. Consult your local dealer for unit availability and further information. The information printed in this brochure reflects product design, fabrication, and component parts at the date of printing. The manufacturer reserves the right, at any time, to make changes in product design or material or component specifications as its sole option, without notice. This includes the substitution of components of a different brand or trade name which will result in comparable performance. All information printed in this brochure is subject to change after the date of printing. Some features shown or mentioned in this brochure are optional and may only be available in selected floorplans. Photographs may show props or decorations that are not standard equipment. Monaco, Holiday Rambler, R-Vision®, their logos and designs, are registered trademarks. Other products and company names are trademarks and/or registered trademarks of their respective holders. While the interior fabrics depicted in this sales brochure are fair and reasonable depictions, the colors depicted may not be an exact match of the actual colors because of the variances in photo-processing and printing. Due to product improvements, changes during the model year and/or transcription errors that may occur, information represented within this brochure may not be accurate at the time of your purchase. If certain information is significant to your purchasing decision, please confirm the information with your dealer. Component part and appliance manufacturers issue limited warranties covering portions of the recreational vehicle not covered under the Limited Warranties issued by Monaco RV, LLC. To learn specific details regarding warranty coverage, please contact your selling dealership or review the warranty packet inside the recreational vehicle.

© 04/2012 R-Vision® 1204011 Litho U.S.A

THE WORLD IN R-VISION®

800-282-4654
www.rvisiontowables.com