

# Autumn Ridge



#### 2012 Autumn Ridge

- ✓ Fastway Flip jack foot
- ✓ 6-gal. gas/elec. DSI water heater
- ✓ 80 gallons of fresh water
- ✓ Starmaxx storage area
- ✓ 30" x 72" entry door

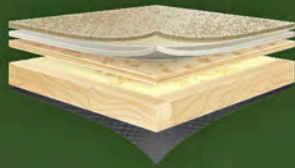
# 2012 AUTUMN RIDGE

- » 6-GAL. GAS/ELECTRIC DSI WATER HEATER
- » GALVANIZED STEEL WHEEL WELLS
- » CAREFREE PATIO AWNING
- » INTEGRATED A-FRAME
- » HARDWOOD SCREWED STILE CONSTRUCTION
- » GOODYEAR TIRES



## BUILT GREEN

We are one of few manufacturers that can say we are certified green capable. Our processes and production materials are independently tested in six environmental categories.



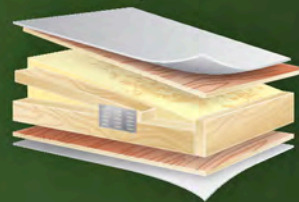
## A DURABLE FOUNDATION

Autumn Ridge's firm foundation is built on 2"x3" floor joists with 5/8" tongue-and-groove plywood decking with R-7 fiberglass insulation.



## A STRONG STRUCTURE

Autumn Ridge's walls provide a long-lasting structure with 2"x2" wooden studs, aluminum exterior siding and R-7 fiberglass insulation.



## A SEAMLESS ROOF

A one-piece seamless rubber membrane covers 4 1/2" arched trusses, 3/8" decking and R-7 fiberglass insulation, providing protection from the elements.



# DETAILS THAT MAKE A DIFFERENCE



Autumn Ridge 309BHL / Mocha



**PULL-OUT LAUNDRY BASKET**  
Innovative storage solutions, like a pull-out laundry basket, make more room for you and your things (n/a 197FBH).



**EVERGREEN MATTRESS**  
Autumn Ridge bedrooms feature an Evergreen mattress, 30% lighter than most innerspring mattresses. And with rounded corners, it provides more space and easier access.



**OVERSIZED SINK**  
A deep oversized sink with high-rise faucet, sink cover and integrated drying rack make for a convenient and efficient kitchen.



Autumn Ridge 336RESA / Safari



Autumn Ridge 336RESA / Safari



**STARMAXX STORAGE**  
Thanks to Starmaxx pass-through lighted storage with tool hooks, you can easily access your gear.



**DINETTE STORAGE**  
Convenient storage is found in the 38" dinette drawers (most models).

# Autumn Ridge Travel Trailer



- » **AERODYNAMIC FRONT PROFILE**
- » **PRIVATE BEDROOMS**
- » **FAMILY-FRIENDLY BUNK ROOMS**



Autumn Ridge 315RLSA / Cedar



## **OUTSIDE KITCHEN**

Enjoy the great outdoors with the convenient outside kitchen, featuring a microwave oven, 2-burner stove, refrigerator, sink and TV prep (select models).

## **DOUBLE-DOUBLE BUNKS**

Autumn Ridge's unique double-double bunks, with a 600-lb. rating, make the most of space and give kids a great place to enjoy some downtime (select models).

## **FASTWAY FLIP JACK FOOT**

The Fastway flip automatic jack foot, a Starcraft exclusive, makes hitching and unhitching a breeze, while eliminating the hassle of wood blocks.



Autumn Ridge 197FBH / Mocha

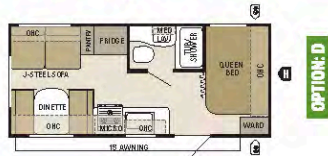


Autumn Ridge 309BHL / Mocha

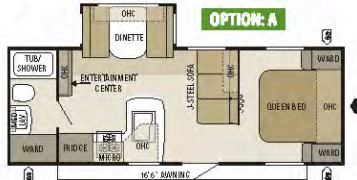
## A perfect fit

With 11 Autumn Ridge floorplans and lengths ranging from 23-35 feet, you're sure to find a camper that fits your life perfectly. With modern kitchens, roomy living spaces, multiple slideouts and a variety of bunk options, each Autumn Ridge is incredibly family friendly. And with the money-saving Premier Package, you'll get a LCD HDTV and electric awning to enhance your entertainment options.

## Floorplans



Autumn Ridge 197FBH



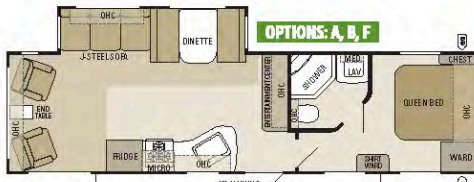
Autumn Ridge 245DS



Autumn Ridge 278BH



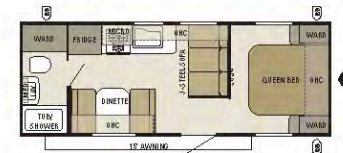
Autumn Ridge 305RKS



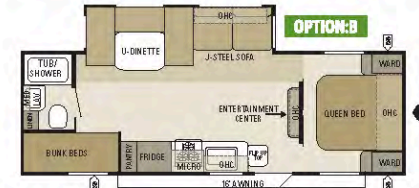
Autumn Ridge 315RLSA



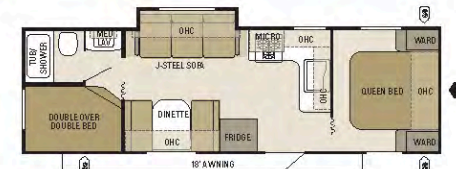
Autumn Ridge 336RESA



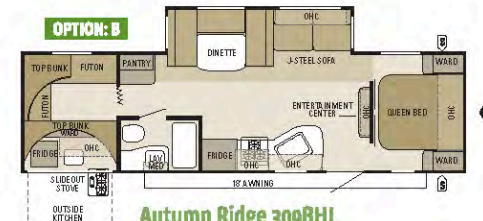
Autumn Ridge 235FB



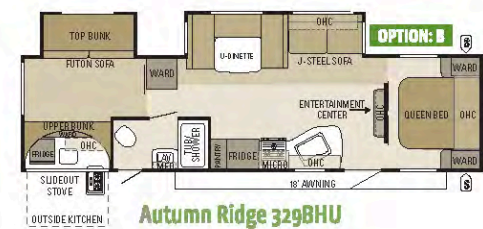
Autumn Ridge 256BHS



Autumn Ridge 297BHS



Autumn Ridge 309BHL



Autumn Ridge 329BHU

- STORAGE
- TRAILER HITCH
- BATHROOM SINK
- MICRO MICROWAVE
- OHC OVERHEAD CABINETS
- FRIDGE REFRIGERATOR
- WARD WARDROBE



FREE-STANDING TABLE OPTION



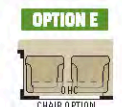
HIDE-A-BED OPTION



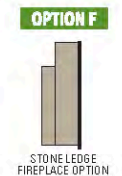
LEDGESTONE FIREPLACE OPTION



QUEEN BED UPPER BUNK OPTION



CHAIR OPTION



STONE LEDGE FIREPLACE OPTION

# STARCRAFT

## CUSTOMER CONVENIENCE PACKAGE



You'll get all the amenities you want at an affordable price with our Customer Convenience Package.

- ✓ 6-gal. gas/electric DSI auto-ignition water heater
- ✓ 13,500 or 15,000-BTU A/C with wall thermostat and louvered directional ceiling vents
- ✓ ABS tub surround
- ✓ Northern Breeze bathroom power vent
- ✓ Double 30-lb. propane bottles with auto changeover
- ✓ Exterior speakers, high-output marine-grade (2)
- ✓ Front diamond plate
- ✓ Microwave oven with carousel
- ✓ Outside shower
- ✓ Tub/shower skylight
- ✓ Water heater bypass system

## Standards and options

### STANDARD KITCHEN EQUIPMENT

3-burner range with 9,000-BTU SuperBurner and piezo igniter  
6 cu. ft. flush-mount refrigerator  
Deep storage drawers under booth dinette seat (2)  
Extra large picture window at dinette  
Kitchen backsplash  
Oversized 21" oven  
Range hood with light and exhaust fan  
Residential faucet with pull-out sprayer  
Sink covers with integrated drying rack  
Sponge holder under sink  
Storable cutting board

### STANDARD CONSTRUCTION EQUIPMENT

1/2" plywood dinette, bed and bunk platforms  
3/8" decking on roof  
5/8" tongue-and-groove plywood main floor decking  
2" x 3" longitudinal floor joists on 16"-18" centers  
81" living room ceiling height  
Hardwood stile with screwed construction  
I-Class cambered structural-steel I-beam frame  
One-piece seamless rubber roof material  
Roof rafters constructed of residential-style tapered 4-1/2" trusses

### STANDARD INTERIOR EQUIPMENT

A/C Chillgrille  
Auto-ignition furnace with wall thermostat  
Ball bearing drawer guides 50-lb. capacity with full-drawer extension  
Bourbon Glazed beech wood doors and drawers throughout  
Cable and satellite TV prep  
Crank-up digital TV antenna with signal booster  
Evergreen mattress with upgraded radius corners  
In-floor ducted heat  
Marine-grade table leg and pedestal base  
Multi-Media Sound System AM/FM/CD stereo with MP3 input jack  
Overhead cabinetry in slideout room above sofa  
Pleated shades  
Porcelain toilet with foot flush  
Roof-mounted antenna for radio

### STANDARD EXTERIOR EQUIPMENT

15" Goodyear radial tires  
30" x 72" radius-cornered main entry door with screen door  
120V G.F.C.I. protected exterior receptacle  
Bumper with drain hose carrier and end caps  
Carefree patio awning  
Chrome hub caps  
E-Z Lube axles  
Fastway Flip automatic jack foot  
Galvanized steel wheel wells (insulated on non-slide models)  
Outside kitchen with microwave, sink, 2-burner stove and TV prep (309BHL and 329BHU)  
Prep for outside grill  
Propane bottle cover made of molded ABS  
Roof ladder  
Spare tire with tire carrier  
Stabilizer jacks (4)  
Starmaxx pass-through storage with tool hooks and courtesy light  
Step light at entry door  
Water system winterization kit

### OPTIONS

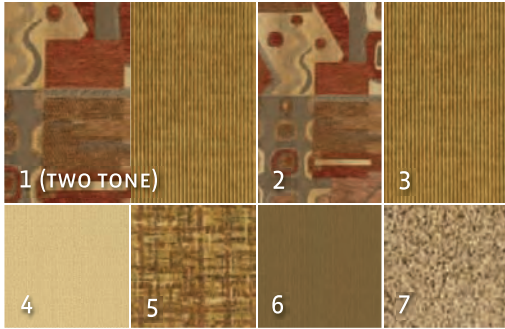
Arctic Polar Package: Insulated, heated and enclosed underbelly; foil insulation in roof and slideout floors  
Customer Convenience Package  
Free-standing table with 4 chairs (select models)  
Hide-a-bed sofa (select models)  
Ledgestone fireplace (with Premier Package in 315RLSA, 305RKS and 336RESA)  
Premier Package: 26" or 32" LCD HDTV with CD/DVD player with MP3 input jack, electric tongue jack, Carefree Traveler 12V electric patio awning, large folding grab handle, raised-panel cabinetry, raised-panel refrigerator doors  
Queen bed with bunk (197FBH)  
Swivel glider chairs (2) in lieu of door-side sofa (336RESA)



For a complete list of standards and options, scan here with your smartphone or visit [starcraftcamping.com](http://starcraftcamping.com).

# Décor

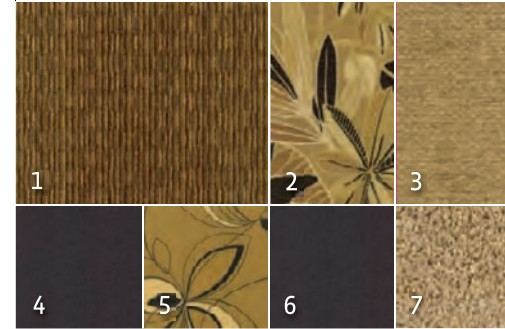
CEDAR



MOCHA



SAFARI



- 1 Sofa
- 2 Accent
- 3 Chair
- 4 Drapery
- 5 Bedspread accent
- 6 Bedspread
- 7 Carpet
- 8 Wood



## Specifications

Floorplan	Exterior Length	Exterior Height AC	Interior Height	Unloaded Vehicle Weight (lbs.)	Dry Hitch Weight (lbs.)	Gross Vehicle Weight Rating (lbs.)	Cargo Carrying Capacity (lbs.)	Fresh Water Capacity (gal.) (includes water heater)	Gray Waste Water Capacity (gal.)	Black Waste Water Capacity (gal.)
197FBH	23' 1"	127"	81"	4,240	480	6,200	1,960	90	32.5	32.5
235FB	26' 5"	127"	81"	4,575	495	6,500	1,925	90	32.5	32.5
245DS	26' 11"	134"	81"	5,315	615	7,500	2,185	90	32.5	32.5
256BHS	28' 11"	134"	81"	6,240	720	8,180	1,940	86	32.5	32.5
278BH	29' 1"	127"	81"	4,880	490	7,500	2,620	90	32.5	32.5
297BHS	30' 6"	127"	81"	5,485	675	7,500	2,015	90	32.5	32.5
305RKS	35'	134"	81"	7,340	910	9,400	2,060	86	65	32.5
309BHL	33' 3"	133"	81"	7,065	795	9,250	2,185	86	32.5	32.5
315RLSA	34' 11"	134"	81"	7,170	890	9,250	2,080	86	65	32.5
329BHU	35' 6"	134"	81"	7,955	890	9,950	1,995	86	32.5	32.5
336RESA	35' 5"	134"	81"	7,955	955	9,950	1,995	86	32.5	32.5

**Unloaded Vehicle Weight (UVW):** Sometimes referred to as "Dry Weight," UVW means the typical weight of this trailer as built at the factory. The UVW, as used in product literature and other promotional materials, does not include cargo, fresh water, propane, options or dealer-installed accessories.

**Gross Vehicle Weight Rating (GVWR):** GVWR means the maximum permissible weight of the trailer, including the UVW plus passengers, personal items, all cargo, fluids, options, and dealer-installed accessories. The GVWR is equal to or greater than the sum of the UVW and the CCC.

**Cargo Carrying Capacity (CCC):** CCC means the maximum weight of all passengers, personal items, food, fresh water, propane, tools, other cargo and dealer-installed accessories that can be carried by the trailer. CCC is equal to or less than GVWR minus UVW. The addition of options will decrease the CCC.

**Hitch Weight (HW):** The hitch weight, as used in product literature and other promotional materials, does not include cargo, fresh water, propane gas, options or dealer-installed accessories. The addition of these types of items will either add to or subtract from the stated hitch weight.

It is important for your safety and enjoyment that your tow vehicle be adequately sized and equipped to tow and handle the GVWR of the RV you select. Review weights and rating of your tow vehicle and consult a competent advisor for questions or advice. Whether you are new to RVing or a veteran, get a feel for the performance of your tow vehicle and the RV together before heading out on the roadways. When you tow an RV, you must drive differently than you do when driving a single vehicle. Practice hooking up, driving, backing up and braking in a safe environment or seek out professional instruction. Starcraft affixes a weight label to each RV which lists weight information for that vehicle. See specification chart above.

# BUILT ON TRADITION



The Starcraft name has been around for more than 40 years—becoming one of the most dependable names in the camping industry. Today, our strong balance sheet and family-oriented business approach means we'll be around for years to come. And with a full lineup of towables, you can bet our campers will fit your lifestyle and come with everything you need—all at an affordable price.

### Warranty

The Starcraft warranty is a manufacturer's limited warranty. Each Starcraft is warranted to the original purchaser for twelve (12) months from the original date of purchase against defects in materials and workmanship. Starcraft's limited warranty is not transferable. For a copy of the limited warranty with full terms and conditions, ask your local Starcraft dealer.

### Roadside assistance

Travel worry-free with the complimentary National Motor Club program, which gives you immediate access to dependable roadside assistance with a simple phone call.

### Why a Local Starcraft Dealer is Important to You

Establishing a solid relationship with your local Starcraft dealer is a key component in the enjoyment of your new Starcraft. By purchasing from a local dealer, you will have a convenient location for sales, parts and service support.



To learn how Autumn Ridge takes comfort and affordability to a whole new level, scan here with your smartphone.

FOLLOW US ON



**STARCRAFT**

CAMPING | *pure and simple.*

© Starcraft RV • 536 Michigan St., Topeka, IN 46571

[www.starcraftcamping.com](http://www.starcraftcamping.com)  
See dealer for further information and prices. All information in this brochure is the latest available at the time of publication approval. Starcraft reserves the right to make changes and to discontinue models without notice or obligation. Photos in this brochure may show optional equipment and props for photography purposes. RV's built for sale in Canada may differ to conform to Canadian codes.



[www.starcraftcamping.com](http://www.starcraftcamping.com) | STOP BY OUR HOME ON THE WEB FOR MORE INFORMATION OR TO FIND A DEALER NEAR YOU.