



DESERT FOX



www.northwoodmfg.com



MADE TO
PLAY HARD

"Made To Play Hard"



'Quality You Can See'



"Made To Play Hard"



28K Taupe Interior

Versatile Furniture allows you to convert your Desert Fox into the best configuration required for your specific need. Comfortable: whether you use it for seating as a jack knife sofa and a dining table and bench or as a bed when folded down for sleeping. Fold them against the wall to create space for your toys. Optional electric queen beds power down to create additional sleeping or conveniently stow overhead leaving the space available for living or hauling.



28K Cactus Interior



28K Taupe Interior



Desert Fox provides all the functionality of your kitchen at home. Amenities include a dual basin sink with a cutting board cover, a full-sized oven and range top (complete with cover), a microwave oven, an 8 cubic foot refrigerator and plenty of drawers and overhead cabinets.

The front bed on the 28KS is not only 80 inches long but it lifts up to provide below bed storage for bulky items. Abundant overhead cabinetry ensures you've got a spot for all of your hard to locate items.

Welcome to the **The Desert Fox** by Northwood Manufacturing. Let us show you around.....With several plans to choose from, there's a Desert Fox that will fit the needs of nearly every Sport Utility RV buyer. Whether you're in the market for a compact Toyhauler like the 21SW or a spacious Full Size garage model like the 28KS, The Desert Fox offers a wide variety of features and options sure to satisfy your needs. That's because Desert Fox SURV was designed with the informed RV purchaser in mind, combining comfortable features and user friendly functionality for the best fit and value in a Sport Utility RV. We invite you to take a closer look and you'll see why Desert Fox is the Quality Sport Utility RV of choice for the experienced buyer...and you'll see why we say, The Desert Fox is...

"Made To Play Hard"



Convenience even in the bathroom. You'll appreciate the large basin sink for quick clean-ups, the foot pedal flush toilet, tub/shower walls for easy cleaning and durability, medicine cabinet storage for convenient toiletry access and great proximity to a wardrobe closet.



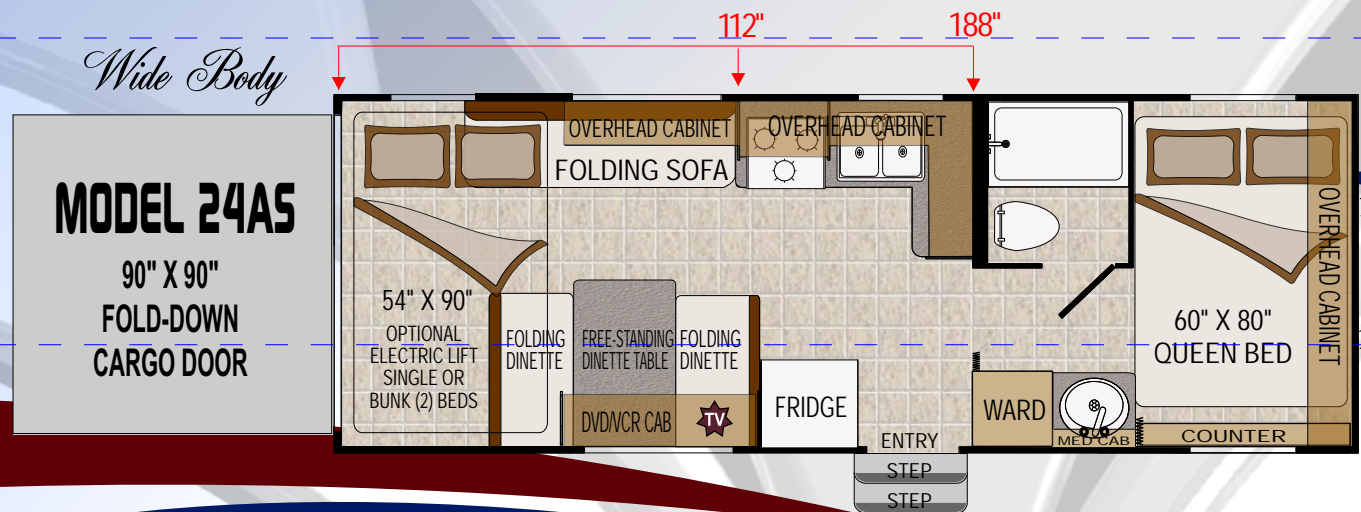
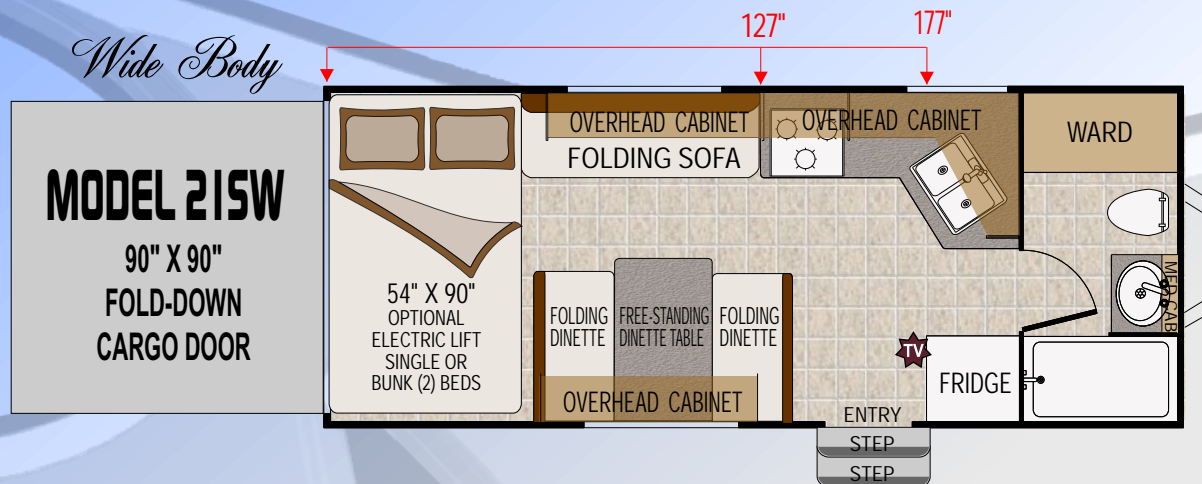
Dining is easy whether you use the free standing table inside or relocate it outside to provide additional table space for your cookout or tailgate entertaining. Inside, the adjacent large window allows for ventilation and the overhead fixture provides light for meals regardless of the hour.



The main cabin of the 28KS provides all the space you'll need to carry your toys of choice. Desert Fox's wide body design provides a valuable extra 6" of interior width. Heavy duty Armstrong linoleum and 6 flush floor tie-downs protect your cargo- and your Desert Fox during travel. The 90" X 90" fold-down cargo door, rated at 2500 lbs, provides dependable access and the compression seal around the cargo door keeps your contents clean and dry.



Take additional fuel with you for your toys or to supply the optional generator. Features include an automotive type fill spout complete with adjacent fuel gauge. The 30 gallon tank provides 25 gallons on fuel accessible through the hose and spray nozzle to refill your toys or tow vehicle.



Features & Options

	21 SW	24 AS	28 KS
CONSTRUCTION	S	S	S
Hardwall-Filon	S	S	S
Storm Windows	0	0	0
Thermal Pane Windows	0	0	0
CHASSIS, FRAME & SUSPENSION	S	S	S
Shock Absorbers-All Wheels	S	S	S
Dual Axle	S	S	S
Chassis Mount Spare	N	S	S
12V Power Jack	S	S	S
16" Tire/Wheel Upgrade	S	S	S
Aluminum Wheels	S	S	S
Triple Step	S	S	S
HEATING & AIR CONDITIONING	S	S	N
25M BTU Auto Ignition Furnace	S	S	N
30M BTU Auto Ignition Furnace	N	N	S
13.5K BTU A/C w/ Duct	0	0	0
15.0K BTU A/C w/ Duct	0	0	0

Full 12 Month Warranty (All Models)

Model Number	21-SW	24-AS	28-KS
Dry Axle Weight (approx lbs)	5750	5616	6800
Dry Hitch Weight (approx lbs)	950	1100	1380
Net Carrying Capacity (approx lbs)	3700	3684	3820
Gross Dry Weight (approx lbs)	6700	6716	8180
Gross Vehicle Weight Rating (GVW) - lbs	10400	10400	12000
Exterior Length (approx w/ hitch)	25'0"	27'6"	32'0"
Exterior Height (approx w/o A/C)	11'4"	11'4"	11'7"
Exterior Width (approx w/o Awning)	8'6"	8'6"	8'6"
Tire Size	ST235 80R16	ST235 80R16	ST235 80R16
Load Range	E	E	E
Fresh Water Capacity (approx gal)	78	78	96
Gray Water Tank (approx gal)	46	38	47
Black Water Tank (approx gal)	37	35	50
LPG Capacity (approx gal)	14	14	14
CSA - Canadian Dealers Only	Yes	Yes	Yes

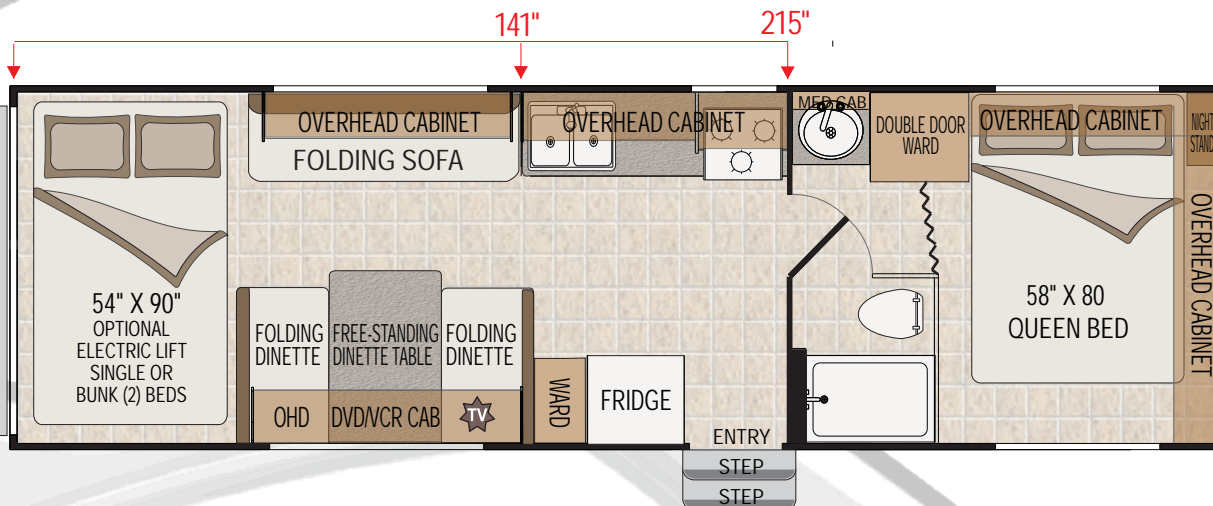
Some options are not included in weights.

MADE TO PLAY HARD

Wide Body

MODEL 28KS

90" X 90"
FOLD-DOWN
CARGO DOOR



DESERT FOX



Desert Fox 21SW



Desert Fox 24AS



Desert Fox 28KS

ELECTRICAL

50w Solar Panel w/ Controller	0	0	0
95w Solar Panel w/ Controller	0	0	0
Satellite Ready	S	S	S
Satellite Dish	0	0	0
Generator Ready	S	S	S
2.5 Onan Generator LP	0	N	N
2.8 Onan Generator Gas	0	N	N
3.6 Onan Generator LP	0	0	0
4.0 Onan Generator Gas	0	0	0

BATHROOM / LAVY

Shower Pan	0	0	0
Tub / Shower	S	S	S
Shower Screen	N	0	0
Bath Skylight	S	S	S

KITCHEN / GALLEY

Extra Large 8' Refer	S	S	S
----------------------	---	---	---

LIQUID PROPANE GAS

Dual 30# LPG Bottles	S	S	S
Dual 40# LPG Bottles	0	0	0
Soft Cover for 40# LPG Bottles	0	0	0

PLUMBING

Heated Holding Tanks	S	S	S
6 Gal DSI Gas/Electric Water Heater	S	S	S

INTERIOR

RS & DS Rollover Sofas	0	0	0
RS Rollover Sofa/ DS Flip Dinette	S	S	S
Large Skylight w/ Shade	S	S	S
Fan Vent	0	0	0
Electric Overhead Queen Bed w/ Curtain	N	0	N
2nd Bunk For Electric Queen Bed	N	N	S
Upgrade 7" Inner Spring Mattress			

EXTERIOR

BBQ Grill	0	0	0
Ramp Cable Kit Only	0	0	0
Outback Awning (Including Cable Kit)	0	0	0
Outback Room	0	0	0
Fuel Station			

KEY: Standard Equipment (no charge) **S**
Option Available on Request **O**
Not Available in this Model **N**

Interiors



Please note that some options are not available in certain plans and some options are automatically included in a standard production run.

As a regular practice, Northwood manufactures its coaches with standard features and popular options that our customers consistently request. Because these options are nearly always requested, our regular manufacturing runs will include all of these most popular 'optional' features. See the list on page 6 for features (both standard and optional), that are universally included in all standard build manufacturing runs. In the chart above, you will also find additional (S) standard features and (I) Included optional features that are available only in certain floor plans.



All of these Items are included in every Standard Build 28K Silver Edition

Aluminum Wheels
Generator Ready
Satellite Ready
DSI Gas/Electric Water Heater
8 Cu Ft Refer

Heated 118 Gallon Fresh Water Tank

Heated Holding Tanks
Solid Wood Cabinet Doors
Solid Wood Drawer Fronts
Night Shades

Full Shower Pan / Surround
Pullout Sprayer in Galley

Porcelain Toilet

Triple Step

Charge Wizard

Chassis Mount Spare

CO Detector

Stabilizer Jacks

Range Cover

Diamond Plate Bra

Black Water Flush

LPG Quick Connect

Galley Skylight w/ Shade

Bathroom Skylight

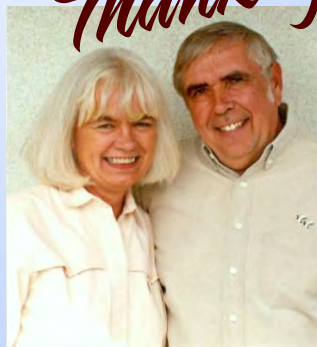
Universal Lube Axles

Heavy Duty Suspension

BENEFITS OF LOCALLY PURCHASING YOUR RV :

- * You enjoy valuable relationship building with Dealer Representatives, close to your home, who will explain the features and benefits of the product.
- * You receive a full product orientation prior to delivery, which includes hands-on directions for many of the coach's systems and functions. You are also introduced to the Dealership's Service/Parts/Warranty personnel who are at the ready to help you with any issues you may encounter, now and in the future.
- * You enjoy customer PRIORITY. Dealerships generally service their purchasing customers first - others may experience long delays and miss opportunities to use their RV. What is it worth for you to have a dealership's full attention and motivation to satisfy you when you need service - in a timely manner?
- * Valuable TAX dollars and jobs stay in YOUR community which pays for your roads, schools, police and fire departments.

Thank you!



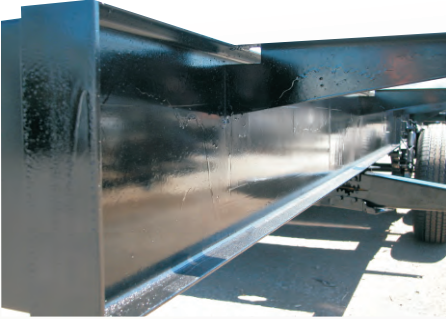
Ron and Sherry Nash

Thank you for taking a moment to check out our Northwood products. Our highest priority is to offer you the best combination of quality and value in an RV and we are confident you will appreciate and thoroughly enjoy your Northwood RV purchase for many years to come.

DESERT FOX

A Solid Foundation

Structural Steel:



All Northwood travel trailers are built with structural steel main rails of I-beam or C-channel. The full length main rails and full width cross members insure a solid structure for easier towing and a quality feeling structure under foot. Each chassis also include Z cross members for additional strength.

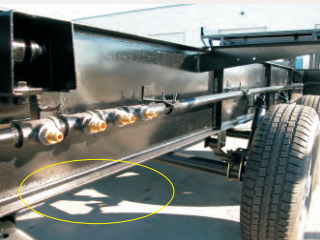
We design and build our own chassis to guarantee quality and excellent drive ability. We use only top quality finishes to prevent rust, and also double prime our welds for added protection.

Camber Welds & Dual Battery Rack:

Special welds are applied along the top of the main rails to create camber. Our cambered frame has greater load carrying capabilities than others. Our chassis functions in the same way as a pre-stressed structural beam. A Northwood trailer won't sag like the competitors models under full load weight - even after many years of service. All Northwood coaches include dual battery racks that are welded directly to the frame. Travel trailers include a large capacity, dual LPG tank rack that is conveniently located at the trailer tongue for quick access.



Cast Iron Gas Manifolds:



We nest our LP gas manifold line within the chassis structure to protect it from damage. We use large dimension pipe to improve gas flow to all appliances. We also use brass fittings to attach appliance feed lines to the manifold. All of these considerations make our gas supply system extremely durable and problem free. LP appliance feed lines are protected with vinyl sleeves and sealed with silicone when they pass thru the floor.

Your Local Desert Fox Dealer is:

SHOW SEASON
2011
Mar 2011



PO BOX 3359
59948 Downs Road
La Grande, OR 97850

Phone 541.962.6274
Fax 541.963.4392
www.northwoodmfg.com