



Berkshire

BY FOREST RIVER MOTOR HOMES DIESEL DIVISION



YOUR LUXURY. YOUR DESTINATION.



Open and spacious is the first impression you get when entering a Berkshire. Relax in total comfort as the user friendly features of the Berkshire create a welcoming atmosphere for you and your guests.



You will feel right at home in the 360FWS, a 40 inch LCD HD TV that is viewable from many angles invites you right into the action from the comfort of the expansive couch. Plenty of storage and an oversize picture window over the free standing dinette round out this beautiful and functional floorplan.





True residential style completes the interior of every Berkshire. Innovative features like the extendable sofa, countertop extension and buffet style dinette help the Berkshire maximize storage space while keeping everything within reach. Picture also shown with front overhead TV option.



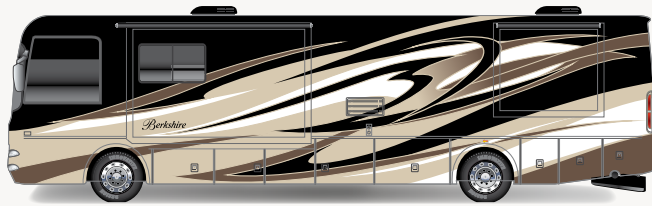
The bedroom of the 390FL offers you true luxury on the road. A flat screen LCD HD TV that is elevated to be easily viewed from many angles will provide you with hours of endless entertainment. The Berkshire also boasts an optional washer and dryer that makes laundromat stops a thing of the past.



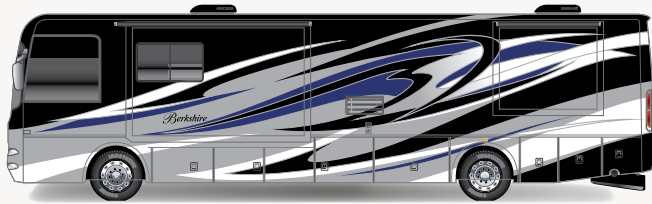


Cleverly designed features are a trademark of the Berkshire series. **A.** The bunk area of the 390 BH is a great place for kids or guest to relax. **B.** When not in use the top bunk folds up and out of the way to create an abundance of space for hanging clothes, and can be hidden by residential style folding doors. **C.** Ready for takeoff. The ergonomic cockpit is designed for your comfort. **D.** The 390FL sofa extends out for additional sleeping and entertaining.

BERKSHIRE INTERIOR AND EXTERIOR COLORS.



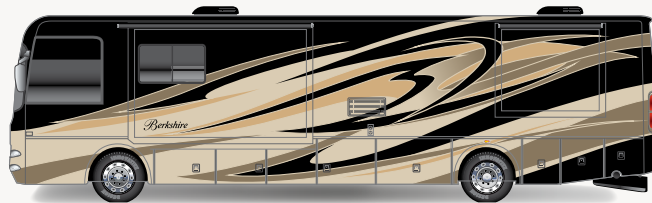
CREME BRULEE



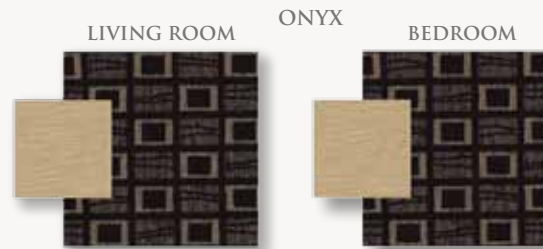
SAPPHIRE DREAM



MYSTIC GARNET



WARM CASHMERE



SYMPHONY CHERRY



EXECUTIVE CHERRY

* COMPLIMENTARY COLORS MAY BE USED FOR DINETTE SEATING.

The Berkshire design team has developed four exciting exterior options that are sure to get you noticed. Combined with the interior options, the Berkshire is sure to leave a lasting impression.



CHASSIS-FREIGHTLINER XC

RAISED RAIL CHASSIS:

ENGINE STANDARDS

- Cummins ISB turbo diesel 6.7 liter 340 HP @ 1600 RPM, 660 ft. lbs. torque @ 1600 RPM,
- Allison 2500MH 6-Speed automatic transmission
- Electric push button shift
- Transynd transmission fluid
- 5,000 lb. receiver hitch

CHASSIS OPTIONS

- Cummins ISB turbo diesel 6.7 liter, 360 HP @ 1800 RPM, 800 ft. lbs. torque @ 2600 RPM,
- Allison 3000MH 6-speed transmission
- 10,000 lb. receiver hitch

OTHER CHASSIS STANDARDS

- 100 gallon, dual fill fuel tank
- LCD engine message center
- Day time running lights
- 7-Pin tow power connector
- 18.7 CFM air compressor
- Farr Eco-air cleaner
- Air filter restriction indicator
- Fuel/water separator
- Heated air dryer
- Automatic, heated moisture ejectors
- Power steering
- Washer/wiper w/ intermittent function
- 160 amp alternator
- (2) 950 CCA @ 0° F, maintenance free batteries

on slide tray

BRAKES

- Full air w/ auto slack adjuster
- ABS
- Exhaust brake
- Telescopic/tilt steering wheel

SUSPENSION

- Neway air suspension front and rear
- Sachs custom tuned shock absorbers
- Heavy duty stabilizer bar
- 55 degree wheel cut
- I beam suspension w/ bell crank
- Air suspension deflation system

COOLING SYSTEM

- Cross flow, rear mounted radiator
- Transmission oil cooler
- 5 year / 100,000 mile coolant (some maintenance required)

STEERING WHEEL

- 4-Spoke VIP black steering wheel
- Electronic cruise control w/ high idle
- Telescopic/tilt steering wheel

STRUCTURAL STANDARDS

- Steel basement construction
- Automotive & foam seal undercoating
- Vacuum bonded floor
- Tubular aluminum frame
- Structure wood flooring
- 2 lb. density, block foam

polystyrene insulation

- Vacuum bonded sidewalls
- Gel-coated fiberglass skin
- Crowned and layered vacuum bonded roof
- Fiberglass roof
- Channeled drains for AC's
- Steel firewall with 2 lb. density, block foam polystyrene insulation
- Tubular steel front bulkhead
- Fiberglass front and rear caps
- 84" interior ceiling height

EXTERIOR STANDARDS

- Full body painted exterior (double clear coat)
- Front mask protective film
- Side-hinged exterior compartment doors w/ full pass through storage
- (4) pt. fully automatic hydraulic leveling system
- 8.5 Guardian diesel generator w/ full slide tray
- 1200 Watt inverter/converter
- (4) Six volt house batteries on slide tray
- (2) Master electric shut off switches
- Electrical panel w/ lighted indicators for fuses
- Individual zoned manifold water supply system
- Variable speed constant pressure water pump
- All coach water filtration system (FO)
- 13,500 BTU low profile front roof A/C w/ heat pump and

ceiling ducts w/ drain

- 40,000 BTU furnace
- Tankless water heater with continuous flow
- 24.5 gallon propane tank
- Black water tank flush system
- Power entrance step
- Patio light
- Lighted entry assist handle
- Shower skylight
- Docking lights
- Heated pads for all water & holding tanks
- Full length mud flap w/ chrome trim
- (2) Piece rear ladder
- Auxiliary LP hook-up-passenger side
- Auxiliary air chuck-front firewall

EXTERIOR OPTIONS

- 8.0 Onan diesel generator w/ full slide tray
- Dual pane, dark tint windows (including (2) exit windows)
- Slide out storage tray
- Exterior entertainment center in sidewall (390BH, 390FL, 390RB)
- Power stepwell cover

DRIVER/PASSENGER AREA STANDARDS

- One piece windshield w/ power sun and blackout shades
- Dash radio w/ integrated back-up and side camera package

- Wrap around cockpit with (9) gauge instrument cluster
- LCD engine message center
- 4-Spoke VIP black steering wheel
- 6-Way power driver seat w/ 360 degree swivel and recliner
- Power footrest on passenger seat
- Passenger seat w/ 360 degree swivel and recliner
- Hide-away steel framed manual step cover
- Lighted step well
- AM/FM/CD player w/ time display
- Sirius satellite radio capable DVD player
- Home theatre surround sound w/ bass woofer and mid range tweeter
- (8) Stereo speakers throughout coach
- Satellite TV prep
- Distribution control box for entertainment electronics
- (2) Defroster fans w/ high and low settings
- Remote generator start switch (On dash)
- Auxiliary start switch
- Driver/passenger map lights
- Driver/passenger cup holders
- Automotive dash AC/heater w/ deluxe controls
- Electronic battery disconnect switch

The Berkshire offers a wide range of standards and options with comfort, style and reliability in mind. Everything from the standard Cummins ISB turbo diesel engine to the choice of cabinet doors. There is no shortage of choices when building your perfect escape.



**DRIVER/PASSENGER AREA
OPTIONS**

- 32" LCD TV in cockpit overhead
- Passenger side laptop console

**LIVING/DINING/GALLEY
STANDARDS**

- Controlled LED lighting package
- 40" LCD color TV (N/A 390BH)
- (4) interior décor choices
- Booth dinette w/ retractable table top & drawers underneath
- Hide-a-bed sofa w/ air mattress
- Contoured overhead cabinets in slide out rooms
- Vinyl floor in entryway, galley and bathroom area
- Carpeted living room and dining area
- "Soft Touch" padded ceiling
- Fantastic Fan in galley area
- Roller style sun and blackout shades
- Metal blinds in galley window
- Solid surface counter tops w/ flush mount sink and stove covers
- Twin sink basins w/ covers
- Wainscotting on main walls
- Tub shower (360FW and 390BH)
- Slide out pantry
- Full extension metal drawer guides w/ ball bearings throughout
- Single lever faucet
- Convection/microwave oven
- 8 cubic ft. refrigerator w/ ice

- maker & raised wood panels
- 3-burner recessed cook top w/ Corian cover
- Galley storage compartment for range and sink covers

**LIVING/DINING/GALLEY
OPTIONS**

- Lockable 4' counter extension
- 12 cubic foot, side by side, stainless steel refrigerator with ice maker (deletes pantry)
- 3-Burner recessed cook top w/ oven
- Executive Cherry & Symphony Cherry cabinet doors
- "Soft Touch" hide-a-bed sofa
- "Soft Touch" love seat
- 16" ceramic tile forward of the bedroom
- Free standing dinette w/ hutch and 4 chairs (hutch N/A on 360FWS, 390RB)
- Electric fireplace (390FL, 390RB only)

BATHROOM AREA STANDARDS

- Extra large lavatory bowl sink
- Double lever lavatory faucets
- One piece fiberglass shower w/ glass door
- Porcelain china toilet
- Mirrored medicine cabinets
- Towel bars
- Fan in bathroom & lavatory area

**BEDROOM AREA
STANDARDS**

- 60" x 80" island queen bed w/ bedspread and decorative pillows
- Bedside wardrobe w/ shoe rack
- Dresser drawers and wardrobe type cabinets
- (2) Flip down LCD monitors w/DVD and AV input and (2) wireless headphones (390BH only)
- Overhead cabinets
- 24" LCD TV
- LED lighting package
- Individual reading lights
- Washer/dryer prep
- Carpet w/ padding
- Night stands
- Egress window

**BEDROOM/BATHROOM AREA
OPTIONS**

- Combination washer/dryer
- Stackable washer/dryer (390RB only)
- Radius shower (360FWS, 390BH)
- Serta mattress (Queen) (390BH, 390FL, 390RB)
- Serta mattress (King) (360FWS only)

SAFETY STANDARDS

- 110 GFI protected circuits
- Carbon monoxide detector
- LP gas detector
- Smoke alarm
- Surface mounted fire extinguisher



A



D



B



E



C



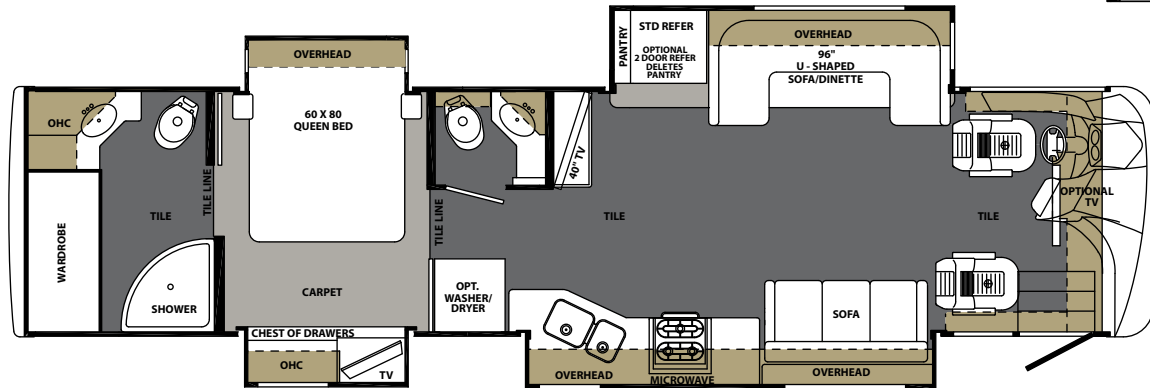
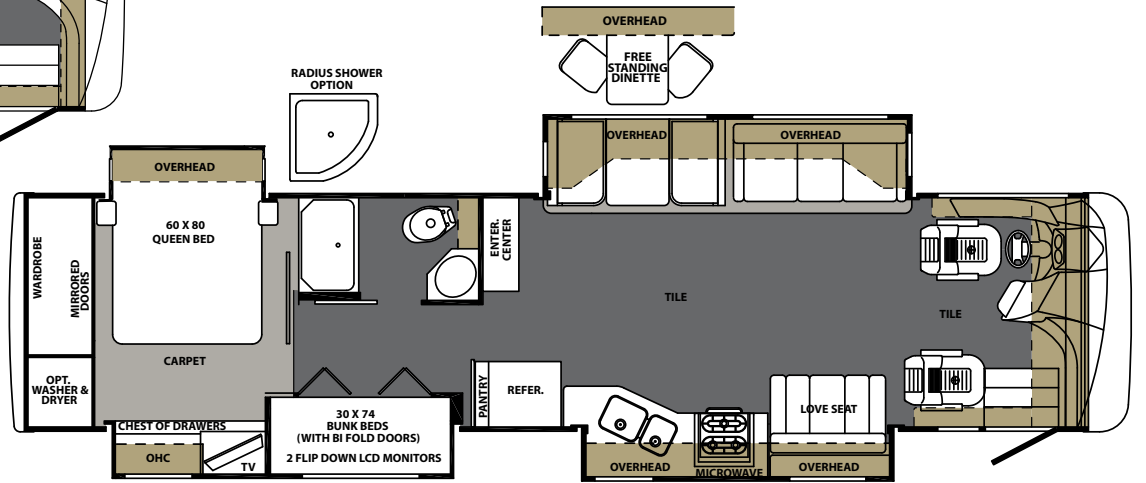
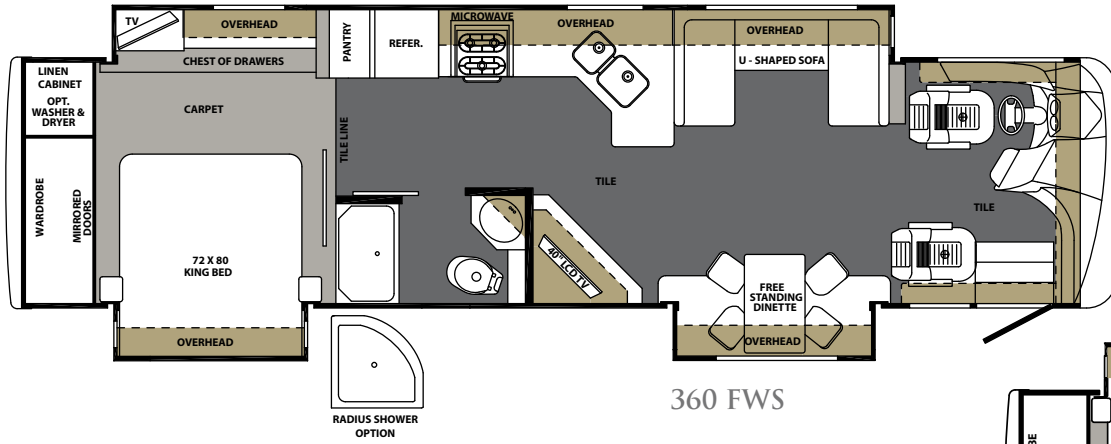
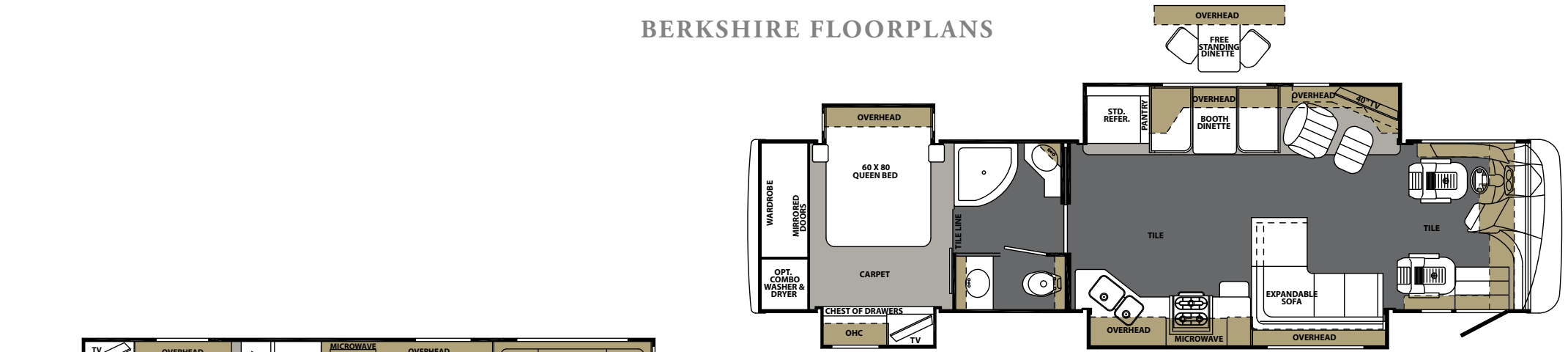
F

- A** Shown: Generator slide tray
- B** Shown: Standard suicide compartment doors w/ total pass-thru storage and optional slide-out storage tray
- C** Shown: Berkshire water manifold system w/ whole house filter and exterior shower

- D** Shown: Optional fireplace for 390FL and 390RB floorplans
- E** Shown: Optional exterior entertainment center in sidewall (N/A 360FWS)
- F** Shown: Roller style sun and blackout shades



BERKSHIRE FLOORPLANS



BERKSHIRE SPECIFICATIONS

MODEL 340HP SPECTIONS	360 FWS	390 FL	390 BH	390 RB
*APPROX. OVERALL LENGTH	37' 3"	39' 3"	39' 3"	39' 3"
OVERALL WIDTH	100"	100"	100"	100"
APPROX. HEIGHT	12' 2"	12' 2"	12' 2"	12' 2"
INTERIOR WIDTH	95.5"	95.5"	95.5"	95.5"
INTERIOR HEIGHT	84"	84"	84"	84"
GREY TANK (GAL)	60	60	60	60
BLACK TANK (GAL)	44	44	44	44
FRESH WATER TANK (GAL)	86	86	86	86
LP (GAL)	24.5	24.5	24.5	24.5
FURNACE OUTPUT (BTU)	40,000	40,000	40,000	40,000
CONTINUOUS HOT WATER	Tankless	Tankless	Tankless	Tankless
APPROX. EXT BASEMENT STORAGE (CU. FT.)	136.5	161.5	161.5	161.5
WHEELBASE	228"	252"	252"	252"

ENGINE	CUMMINS ISB 340HP	CUMMINS ISB-XT 360HP
TORQUE (FT. LB.)	660	800
TRANSMISSION	ALLISON 2500MH	ALLISON 3000MH
HITCH RATING (LBS.)	5,000	10,0000
WHEELS	Stainless Steel Simulators	Aluminum
FRONT GAWR (LBS.)	10,410	10,410
REAR GAWR (LBS.)	17,500	19,000
GVWR (LBS.)	27,910	29,410
GCWR (LBS.)	32,910	39,410
FUEL TANK (GAL)	100	100
DEF TANK (GAL)	13	13
TIRES	255/80R22.5 XRV LRG	255/80R22.5 XRV LRG

*Approximate Overall Length Shown W/O Rear Ladder. Add 6" with Rear Ladder



Berkshire

BY FOREST RIVER MOTOR HOMES DIESEL DIVISION

Named after its parent company, the Berkshire Class A motorhome is the flagship of our fleet. Only the finest appointments and attention to detail go into building it. With this in mind, the Berkshire lives up to its name in both quality and value. Forest River is proud to be part of the Berkshire Hathaway family.



Forest River, Inc. encourages our customers to purchase their Forest River products from a local dealership whenever possible for the following reasons:

It is the goal of Forest River, Inc. that all of our RV owners fully enjoy the RV experience and that customer satisfaction meets or exceeds their expectations!

- 1) Forest River, Inc. dealers are independently owned and operated businesses so priority service and scheduling is at their discretion and is often provided to customers that purchased their unit at that dealership.
- 2) Purchasing locally allows customers to establish meaningful relationships with a dealer, enhancing the RV experience through assistance with product questions, user tips or RV regulations for your state or country, and much more!
- 3) Canadian customers must meet requirements to bring an RV purchased out of the country to their home. These requirements may involve additional inspections and certifications, taxes and fees. Your local Canadian Dealer is a professional at meeting these requirements.
- 4) Scheduling timely warranty repairs and adjustments through a local dealership provides far greater flexibility and convenience to you, the customer!



PRE-DELIVERY INSPECTION FACILITY

20,000 square feet of quality assurance. The bare essentials for a premium product. This state-of-the-art facility gives immediate daily feedback to production for quality assurance in every unit built.

Forest River, Inc.
Diesel Motorized Division
1800 West Hively Avenue
Elkhart, Indiana, 46517
574.522.3693
www.forestriverinc.com/berkshire



Learn More
Scan this barcode using a QR Reader on your smart phone to learn more about Forest River.



A Berkshire Hathaway company.

All illustrations and specifications contained in this literature are based on the latest product information at time of publication. Forest River reserves the right to make changes in prices, colors, materials, equipment and specifications at anytime without notice and assumes no responsibility for any error in this literature. All units are shipped F.O.B. Elkhart, Indiana.

CONSULT YOUR LOCAL DEALER FOR WARRANTY INFORMATION.

