

2012 View | View Profile



View Profile

Full-Body Paint
Blackstone





On the cover: **VIEW 24M** Granite Deluxe Graphics
VIEW PROFILE 24G Blackstone Full-Body Paint



SMARTSPACE™



24J Pecan with Sunset Cherry

Details Matter

Where do you begin when you talk about a revolutionary Class C motor home that combines the automotive performance of a luxury vehicle with the amenities and style you'd be proud to call home? That's easy – the 2012 Winnebago® View® and View Profile™.

It all starts with the Mercedes-Benz® Sprinter chassis and fuel-efficient turbo-diesel engine that is truly fun to drive. We then use our SuperStructure® construction, SmartSpace™ design and Smart Storage™ philosophies to add the features and functions you desire.

The result is a sleek aerodynamic exterior with a

surprisingly spacious interior comprised of multi-functional pieces, user-friendly technology and loads of comfort.

Three models complete the 2012 lineup. The front overhead bed is standard on the View with a front entertainment center available on the 24J. The View Profile includes a rear queen bed and is perfectly designed for RVers who like to travel on their own terms.

We've earned the right to be called the Most Recognized Name in Motor Homes. And you've earned the right to drive one.

Why View/View Profile?

- Mercedes-Benz® Sprinter chassis
- Fuel efficient
- Easy to maneuver
- RV Radio®
- MCD American Solo® blackout roller shades
- Driver-side slideout
- Available Ultraleather™
- Swivel cab seats
- Comfort Sofa/Sleeper (View 24M and View Profile 24G)



Recognized Quality The RV Dealers Association bestows its annual Quality Circle Award based on dealer ratings to the manufacturers that provide exceptional products, service and support. Only one manufacturer has received this honor for fifteen consecutive years: Winnebago Industries®.

24J Pecan with Sunset Cherry



24M Redwood with Mocha Cherry

Inviting

The living area is pleasantly spacious and is further expanded by the cab seats that easily swivel to become an integral part of the living area. The new 24M adds versatility by including both the Bench-Mark® dinette and the Comfort Sofa Sleeper that easily folds out into a bed with an inflatable mattress. Front overhead options give you the ability to customize your lounge to suit your tastes. The 24M features a 26" LCD TV that is smartly mounted on a telescoping swivel bracket for optimal viewing flexibility. Your choice of a bunk with a 19" LCD TV over the door or an overhead entertainment center with a 32" LCD TV is available in the 24J.

The cab RV Radio,® coupled with the coach stereo system complete with CD/DVD, means entertainment choices are as close as your fingertips. And Winnebago has teamed with Sirius® Satellite to offer you extended radio programming. It even includes a six-month complimentary subscription to get you started.

For those looking for a little more, choose the interior upgrade package that includes a removable cab carpet, coordinating sofa throw pillow, and MCD American Duo® solar/blackout roller shades to round out an incredibly functional, modern approach to what a Class C can be.



WINNEBAGO
GoWinnebago.com

Learn more about what sets us apart from other manufacturers.





A Place for Everything

The View's contemporary galley takes that mantra to heart. Fully extendable drawers and sleek cabinetry with satin nickel hardware house all your cooking essentials, so, casual or gourmet, you are ready to go. The standard microwave/convection oven and generously sized refrigerator help you get the job done right, and the range top comes with a glass cover for added countertop space when needed. The available cold water filtration system provides filtered drinking water.

A stylish galley backsplash, stainless steel refrigerator façade and wood sink cover are among the additions if you choose the Interior Upgrade Package as part of your new View.

The View lets you enjoy meals at your BenchMark full-comfort dinette, which features innerspring cushions that flip up to reveal hidden storage compartments.



Forget Yourself

The tremendous automotive performance of your new View or View Profile will have you navigating freeways, side roads and campsites with the greatest of ease. The incredibly comfortable cab seats have adjustable lumbar support, recline, and are available in premium Ultraleather.™ Their swivel feature means

they may just become your favorite place to sit in the lounge as well! The RV Radio's touch screen gives you easy access to music and information. It also incorporates the rearview monitor to help you navigate when backing up. Seeking a little privacy? Built-in pleated shades are available for the cab windows.

WINNEBAGO
GoWinnebago.com

Jump online to find the latest on our fall line-up of Winnebago motor homes.



Best in Class

See how Winnebago Industries® takes motor home design and function to the next level, and why we've earned the right to be called the Most Recognized Name in Motor Homes.®



Movie Night
Watch the action, drama, and comedy come alive on your 32" LCD TV, flanked by two large storage cabinets as a part of the available *Overhead Entertainment Center* (24J).



Multi-Tasking The *BenchMark Full-Comfort Dinette* is a premium dining set, has innerspring seat construction for residential-style comfort, flip-up for easy storage access and it even converts to a comfortable bed (24J and 24M).



Let There Be Light With our available smoothly retracting *MCD American Duo Solar/Blackout Roller Shades* you can control just how much light and privacy you want—no matter the time of day. *MCD Solo*® shades come standard.



About Face
The *Cab Seats* swivel to face the living area, giving you more space and more face time with your traveling companions.



Versatility All sofa beds are not created equal. The *Comfort Sofa Sleeper* is wrapped in durable *Ultraleather*, operates with one hand, and has a self-inflating mattress so cozy, your guests won't want to leave (24G and 24M).



Technology
Other motor homes employ tank monitors with probes that can corrode. Our *TrueLevel™ Tank Monitor System* harnesses sonar technology to provide accurate readings every time.



Crank it Up
Inside or out, you can fill the air with music from the *Coach Stereo System*. It features AM/FM stereo, CD/DVD player and available exterior speakers with a remote extender.



Total Package
The *RV Radio*® and available *Rearview Monitor* combine to engage all your senses. Touch the 6.5" LCD touch screen; hear the AM/FM, weather band, CD, and MP3; and see safely behind you.



Easy by Design With the *QuickPort® Service Connection Hatch* (24J and 24G), the bay door can close with hookups attached and you will quickly be able to get to the business of having fun.



24G Redwood with Mocha Cherry

View[®]

Profile

Perspective, Redefined

For 2012, Winnebago proudly offers the View Profile—a labor of love that fully embraces our SmartSpace design and Smart Storage philosophies. It is the result of years of searching for the absolute best technologies and features that provide the most comfortable, quality living a coach can provide in a compact footprint.

Low profile front-cap styling offers a sleek exterior and the standard

large skylight brings the outside in. Standard swivel cab seats create more usable living space and the removable pedestal table lets you enjoy dinner at either the Comfort Sofa/Sleeper or the cab seats. Your choice of upscale MCD American roller shades and a 26" LCD TV connected to the lounge stereo system with DVD player make the View Profile a relaxing retreat worthy of your free time.



More to Enjoy

You won't believe the generous size of the bedroom slideout, which features a queen bed with memory foam mattress and an abundant wardrobe. Enjoy lulling yourself to sleep with a good movie? The available 19" LCD TV makes it possible.

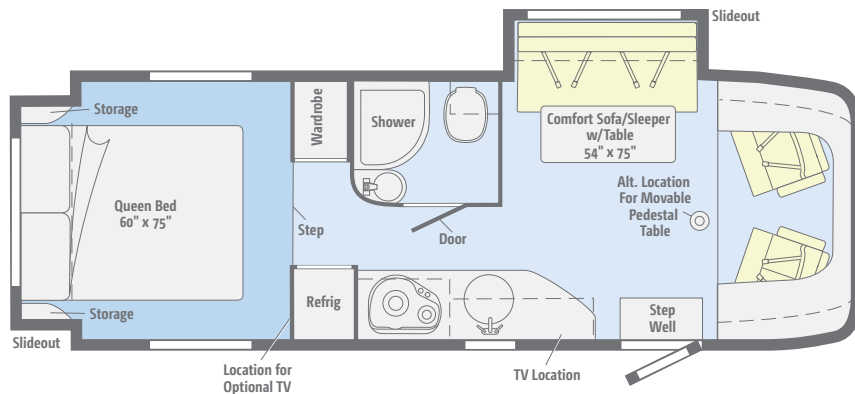
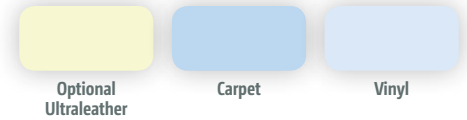
The galley's appliances and counter space are maximized with sink and range top covers, and a

removable freezer compartment in the single door refrigerator gives you the ability to modify your cold storage capacity. With a comfortably sized bathroom and plenty of lounging space, you will travel in style. The available Interior Upgrade Package includes a galley backsplash, MCD American Duo solar/blackout shades and a removable carpet in the cab area.



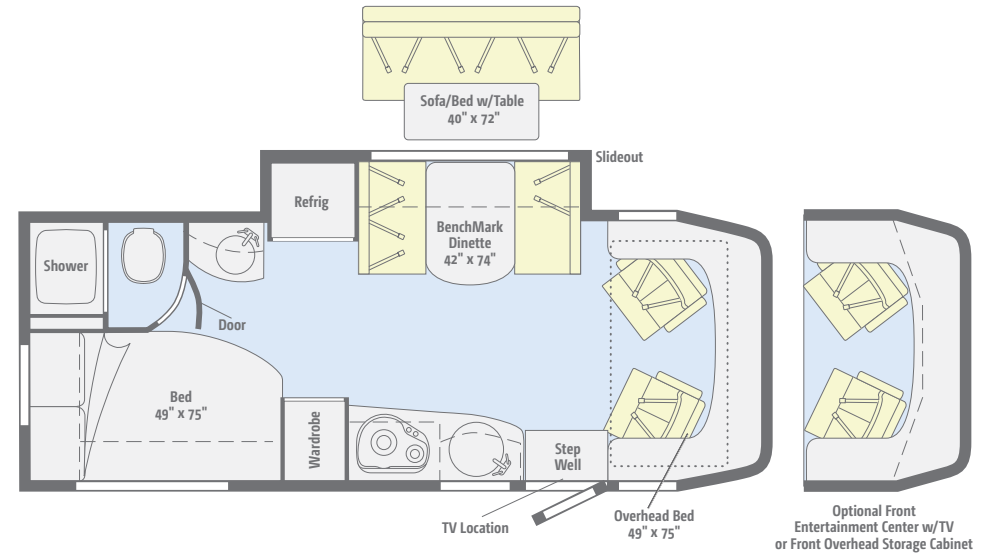
Floorplans

Dimensions shown are for sleeping space only and may vary due to styling differences. Dashed lines denote overhead storage areas. Floorplans and specifications are also available online at GoWinnebago.com.



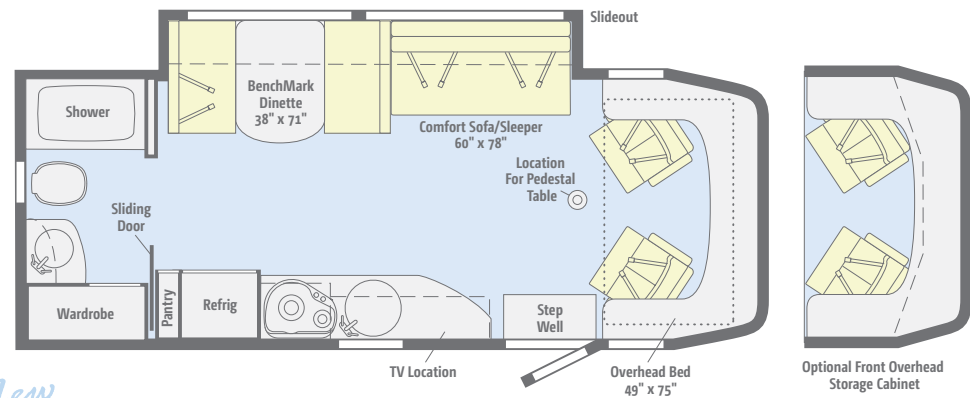
24G View Profile

A rear slideout with walk-around queen bed anchors the View Profile, while the Comfort Sofa/Sleeper complete with movable table adds flexibility.



24J View

By placing the queen bed in the corner and offering a front overhead bed, optional front entertainment center or front overhead storage cabinet, we've planned a spacious, fully functional floorplan for entertainment and family fun.



New

24M View

The versatile Comfort Sofa/Sleeper headlines this new 2012 model, where you can choose additional sleeping accommodations or the overhead storage cabinet. With a spacious bathroom in the rear of the coach, you have plenty of room to roam.



See your favorite motor homes come alive with virtual tours at GoWinnebago.com.



Specifications

MERCEDES-BENZ® SPRINTER CHASSIS

Mercedes-Benz 3.0L 6-cylinder, 188-hp turbo-diesel engine

Adaptive ESP® technology

5-speed automatic transmission w/tip shift

4-wheel ABS

180-amp. alternator

Trailer Hitch⁵ 5,000-lb. drawbar/500-lb. maximum vertical tongue weight w/7-pin connector

Stainless steel wheel liners

OPTIONAL EQUIPMENT

Stylized aluminum wheels

CAB CONVENIENCES

RV Radio® AM/FM stereo w/CD player, iPod/MP3 input, weather band and remote

Cab Seats armrest, adjustable lumbar support, headrest, recline, swivel and slide

Power door locks w/remote

Power windows

Power mirrors w/defrost and turn signals

Cruise control

Chassis/house battery radio power switch

Power steering w/tilt and telescope wheel

Sunvisors

12-volt powerpoints

OPTIONAL EQUIPMENT

Pleated cab window blinds

Dash appliqué package

Sirius® Satellite Radio 6-month complimentary subscription, and iPod® interface connector

RV Radio/Rearview Monitor System 6.5" LCD touch screen color monitor, CD player, weather band, remote, iPod/MP3 input, color rear camera w/one-way audio

INTERIOR

Front overhead bunk w/ladder and privacy curtain (24J, 24M)

Stereo System AM/FM, alarm clock, CD/DVD player, input jack, 2 speakers and subwoofer

19" LCD TV (24J)

26" LCD TV (24M, 24G)

Satellite system ready

Monitor panel

Amplified digital HDTV antenna

Key-activated slideroom master lock switch

Cab divider curtain

Skylight w/shade (24G)

Insulated roof vent w/electric lift, ventilator fan and rain sensor (24J, 24M)

Powered ventilator fan (galley 24G)

Powered roof vent (bath)

MCD American Solo® blackout roller shades

Mini blinds (galley and 24M bath)

Tinted windows

Soft vinyl ceiling

OPTIONAL EQUIPMENT

Entertainment Center 32" LCD TV w/remote and rope lighting (front overhead) (24J)

Interior Upgrade Package galley backsplash, removable cab carpet, refrigerator w/stainless steel facade insert (NA 24G), wood sink cover (NA 24G), sofa throw pillow, MCD American Duo® solar/blackout roller shades

GALLEY

Laminate countertops

Microwave/convection oven

Glass sink cover (24G)

2-burner range top w/glass cover

Vented range hood w/light

Norcold® refrigerator/freezer, two door (black 24J, 24M)

Single-door refrigerator w/removable freezer unit (24G)

OPTIONAL EQUIPMENT

Water filtration system (cold water)

BATH

Retractable self-cleaning shower door (24J, 24M)

Shower curtain (24G)

Flexible showerhead

Skylight

Porcelain toilet

Water-pump switch

BEDROOM

Foam mattress underbed storage, mattress cover, pillows, pillow shams (24J, 24M)

Memory foam mattress w/cover (24G)

OPTIONAL EQUIPMENT

19" LCD TV (24G)

EXTERIOR

Automatic entrance door step(s)

Ladder (24J, 24M)

Porch light

Step well light

Front and rear mud flaps

Premium high-gloss skin

OPTIONAL EQUIPMENT

Patio awning

Electric patio awning w/metal wrap (full-body paint only)

Exterior speakers w/remote control extender

HEATING & COOLING SYSTEM

13,500 BTU roof-mounted high-efficiency air conditioner

20,000 BTU furnace

OPTIONAL EQUIPMENT

A/C heat pump

ELECTRICAL SYSTEM

Service Center light cable TV input, 30-amp. power cord, portable satellite dish hookup, QuickPort® (24M, 24G) service connection hatch

Auxiliary start circuit

Exterior AC duplex and antenna jack

Battery disconnect system (coach)

Automatic dual-battery charge control

LP generator prep kit

AC/DC load center, 45-amp. converter/charger

2 deep-cycle Group 24 RV batteries

OPTIONAL EQUIPMENT

3,200-watt Cummins Onan® diesel generator

3,600-watt Cummins Onan MicroQuiet™ LP generator

Diesel generator prep kit

300-watt DC/AC inverter

PLUMBING SYSTEM

Service Center color-coded labels, pressurized city water hookup/tank diverter valve, drainage valves, exterior wash station w/lighted pump switch

10' sewer hose

TrueLevel™ holding-tank monitoring system

6-gallon 110 V/LP water heater w/EMS

LP Tank w/remote fill w/power switches

Winterization Package water heater bypass valve and siphon tube

On-demand water pump

OPTIONAL EQUIPMENT

Heated drainage system

SAFETY

Dual airbags

Seat belts

LP, smoke and carbon monoxide detectors

10 BC fire extinguisher

Ground fault interrupter

Child seat tether anchor (24J, 24M)

High-mount brake lamps

Daytime running lamps

WARRANTY⁶

12-month/15,000-mile basic warranty⁷

36-month/36,000-mile limited warranty on structure⁷

10-year limited parts-and-labor warranty on roof skin⁷

- ¹ The height of each model is measured to the top of the tallest standard feature and is based on the curb weight of a typically equipped unit. The actual height of your vehicle may vary by several inches depending on chassis or equipment variations. Please contact your dealer for further information.
- ² The load capacity of your motor home is designated by weight, not by volume, so you cannot necessarily use all available space when loading your motor home.
- ³ Capacities are based on measurements prior to tank installation. Slight capacity variations can result due to installation applications.
- ⁴ Capacities shown are tank manufacturer's listed water capacity (W.C.). Actual filled LP capacity is 80% of listing due to overfilling prevention device on tank.
- ⁵ Actual towing capacity is dependent on your particular loading and towing circumstances which includes the GVWR, GAWR, and GCWR, as well as adequate trailer brakes. Please refer to the Operator's Manual of your vehicle for further towing information.
- ⁶ See separate chassis warranty.
- ⁷ See your dealer for complete warranty information.

NA Not Available

Not all items available in combination. See dealer for details.

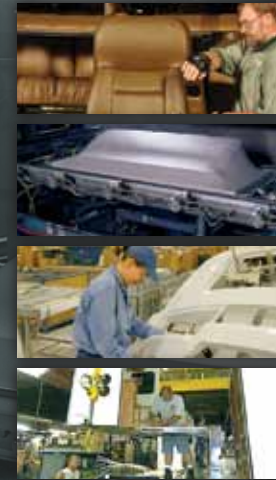
Winnebago Industries® continuing program of product improvement makes specifications, equipment, model availability, and prices subject to change without notice. Comparisons to other motor homes are based on the most recent information available at printing.

Weights & Measures

	View 24J	View 24M	View Profile 24G
Length	24'6"	24'6"	24'9"
Exterior Height ¹	11'3"	11'3"	10'8"
Exterior Width	7'6"	7'6"	7'6"
Exterior Storage ² (cu. ft.)	32/36.3*	29.7/34*	17/23*
Awning Length	15'	15'	15'
Interior Height	6'8"	6'8"	6'5"
Interior Width	7'3"	7'3"	7'3"
Freshwater Capacity w/Heater ³ (gal.)	35	38	35
Holding Tank Capacity - Black/Gray ³ (gal.)	31/38	32/36	32/32
LP Capacity ⁴ (gal.)	13	13	13
Fuel Capacity (gal.)	26.4	26.4	26.4
GCWR ⁵ (lbs.)	15,250	15,250	15,250
GVWR (lbs.)	11,030	11,030	11,030
GAWR - Front (lbs.)	4,410	4,410	4,410
GAWR - Rear (lbs.)	7,720	7,720	7,720
Wheelbase	170"	170"	170"

* Running line change Summer of 2011

Take a Tour



We're proud of our processes, state-of-the-art facilities and the people who make Winnebago Industries number one. We invite you to visit our complex in Forest City, Iowa, for a first-hand look at the dedication and technology behind every motor home we build.

NO SHORTCUTS — NO COMPROMISES

The crowned, one-piece **fiberglass roof** is backed by a 10-year limited parts-and-labor roof skin warranty. Fiberglass offers superior strength and durability over less attractive rubber roofs found on so many competitive models that can streak and degrade over time.

Durable, lightweight **Thermo-Panel® sidewalls** combine fiberglass, high-density block-foam insulation and the inner wall surface with aluminum support structures.

Metal substructures secure cabinets and appliances to add safety and stability.

An **electrodeposition coating** helps protect critical steel components.

Specially engineered **interlocking joints** connect the floor, sidewalls and roof into a cohesive unit.



**SUPER
STRUCTURE**



You can compare features. You can compare styles. But when it comes to quality construction, there is no comparison. Only motor homes manufactured by Winnebago Industries harness the legendary strength and durability of our SuperStructure® construction process—a process we've been perfecting for more than 50 years.

SuperStructure means a solid framework, steel and aluminum substructures and components built in-house to our exacting standards. It means managing each detail to ensure the integrity and quality of every coach. It means barcoding parts to save time and frustration during service and running every coach through a high-pressure leak test before it leaves the factory.

Where other manufacturers cut corners, SuperStructure ensures the features you can't see are treated with the same care as the ones you can. When you buy a Winnebago motor home, you are getting a coach that is built for you—and built to last.

Exteriors

Décor

The View and View Profile look sharp in deluxe graphics or available full-body paint.

View



Metallic Gold
DELUXE GRAPHICS



Granite
DELUXE GRAPHICS



Blackstone
FULL-BODY PAINT



Graphite
FULL-BODY PAINT



Sandalwood
FULL-BODY PAINT



Jadestone
FULL-BODY PAINT



Metallic Gold
DELUXE GRAPHICS



Granite
DELUXE GRAPHICS



Blackstone
FULL-BODY PAINT



Graphite
FULL-BODY PAINT



Sandalwood
FULL-BODY PAINT



Jadestone
FULL-BODY PAINT

View Profile

Choose from three fabric collections and two woods with satin nickel hardware.

Platinum *The luster of precious metal and graphic detailing in a serene monochromatic palette*



Main

Putty
Ultraleather

Accent

Bedspread

Carpet

Driftwood
Wall Board

Alpine Passage
Countertop

Pecan *Warm tones create a welcoming atmosphere wherever you travel.*



Main

Wheatfields
Ultraleather

Accent

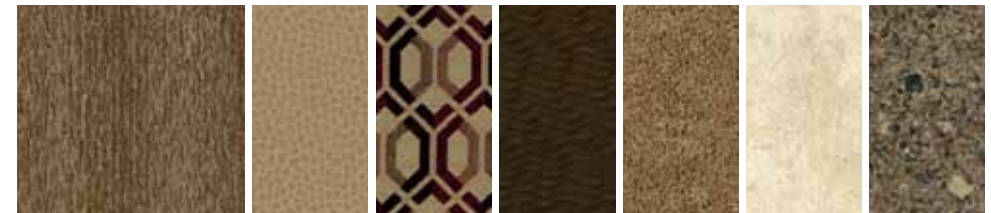
Bedspread

Carpet

Sashay
Wall Board

Antique Topaz
Countertop

Redwood *Earthy and rich colors present a playful contrast of patterns, and bold abstract graphics with geometric lines*



Main

Briarwood
Ultraleather

Accent

Bedspread

Carpet

Sashay
Wall Board

Antique Topaz
Countertop



Sunset Cherry

Mocha Cherry

Fabrics and carpets may change without notice or obligation.



Don't Miss Out

Caravans, rallies, local and state events, and exclusive RV travel benefits can all be yours as a WIT Club member – and you can meet like-minded folks that possess the same enthusiasm for traveling this great nation of ours. It's a wonderful way to make your View or View Profile a way of life. Learn more about the Winnebago-Itasca Travelers Club at WITclub.com.



Members enjoy:

- Caravans and Rallies
- Local and State Group Activities
- RV Travel Benefits



Committed to Service

We back our motor homes with best-in-class support both before *and* after the sale:

- 12-month/15,000-mile basic limited warranty
- 36-month/36,000-mile warranty on structure
- 10-year standard limited parts-and-labor roof skin warranty
- Complimentary 24-hour roadside assistance program
 - RV Technical Assistance Hotline
 - RV Service Appointment Assistance
 - Emergency Trip Interruption
 - Emergency Message Service
 - Nationwide Trip Routing
 - Fee-Free Travelers Cheques



- TripSaver Fast Track Parts guarantees that in-stock warranty parts ship directly to your dealer within 24 hours
- National dealer service network



WINNEBAGO
GoWinnebago.com

For photos, videos and a whole lot more about the full lineup of Winnebago motor homes, visit GoWinnebago.com.



THE MOST RECOGNIZED
NAME IN MOTOR HOMES*

For Sales and Service
Information Contact:



VIEW



VIEW PROFILE