



FIFTH WHEELS

CARDINAL  
-FORSTRIVER



CARDINAL FIFTH WHEELS | Refined Luxury









*This solid surface countertop island has extra large dual stainless steel sink bowls, deep enough for stock pots and pans. The high rise, pull-out, satin nickel faucet makes clean up a breeze. An attractive mirrored glass backsplash accents the cooking area. The stainless steel appliance package is optional on the 3675RT.*



*Stock the pantry for an extended stay. There's plenty of storage space for even the most creative cook.*

*All Cardinal's ergonomically designed kitchens maximize convenience, while setting the stage for an enjoyable cooking experience. Beautiful, durable, solid cherry hardwood cabinetry sets the standard for refined luxury.*



**Experience a masterful blend of form and function**

We want you to feel at home. Each Cardinal model is outfitted with residential style appointments, incredible storage space, contemporary convenience features, enhanced with rich, solid cherry hardwoods.

**Cardinal - Refined and fully equipped.**



*Well planned features, like the under counter sponge drawer use space efficiently. (Available on the 3675RT.)*

*Pack for changing weather. Generous hallway closets and wardrobes have overhead storage for all the little extras that make travel fun.*







*This 3450RL gourmet kitchen is fit for a master chef! Rich, raised panel cherry hardwood cabinetry with a built-in wine rack provides an abundance of storage space. Optional stainless steel appliance package includes a stainless steel refrigerator front, a convection microwave oven and a sealed burner range.*





## Living spaces designed to enhance life

Refined from top to bottom with a long list of standard features, it's easy living with Cardinal. Every detail is planned with residential living in mind.

*Cardinal's residential style bath features a comfortable 30" x 60" shower with an adjustable shower head and skylight. An extended height double door vanity with a solid surface countertop, an integrated porcelain sink and a full medicine cabinet makes your Cardinal feel like home. (Available on 3030RS, 3515RT, and 3450RL.)*



*Work, rest or play. The 3450RL's living area features a standard 40" LCD TV with a built-in desk that's cable and internet ready. Swivel recliners are shown in optional soft-touch Cognac leather. Extra deep flush floor slide rooms are framed with beautiful cherry stained hardwood fascia. An optional fireplace adds ambience.*



*A Serta king size bed with underbed storage is standard on 3450RL. Contemporary, mirrored cedar lined wardrobes keep clothes fresh all year round. Cardinal bedrooms include a sliding louvered door for the standard washer/dryer prep area. (Dual electrical supply allows the washer/dryer to operate simultaneously.)*



*This 68" hide-a-bed sofa extends sleeping accommodations. (Optional soft-touch Cognac leather shown.)*





*The living is easy in this contemporary styled 3550RL kitchen, complete with a built in wine rack. The living area includes a standard 40" LCD TV with an articulating swing arm for flexible viewing convenience. (Optional fireplace and stainless steel package shown.)*



### Artfully expressed with stunning style

Cardinal's warmly inviting interiors blend traditional sophistication and modern elegance. Choose from four distinctive designer decors with optional soft-touch leather.



*The Fantastic™ power fan circulates air and reduces moisture. An optional Fantastic™ Fan with rain sensor is available for the kitchen and bedroom.*



*Durable solid surface counter tops add lasting beauty.*



*Gourmet cooks will love this solid surface countertop with stainless steel dual sink bowls. The high-rise, satin nickel faucet pulls out for easy use.*



*The 3550RL includes this convenient hallway wardrobe/closet to extend storage capacity. All Cardinal models include a contemporary fluted glass bedroom door.*



SESAME



FRENCH ROAST



SEQUOIA



MOSSY OAK



OPTIONAL  
SOFT-TOUCH  
COGNAC  
LEATHER





*This inviting island with two bar stools is a great place to chat or entertain. Flush floor slides on both sides provide a smooth, safe transition throughout all Cardinal floorplans. (3030RS shown with optional stainless steel package, fireplace and central vacuum system.)*





### Style with purpose

From a cleverly hidden closet to well planned island workspace, Cardinal engineers maximize space efficiently. Entertain, dine and relax with a good movie or favorite book, these interiors are designed for easy living.



*3030RS features solid cherry decorative slide fascia, flush mount halogen lighting, oversized overhead cabinets with designer detailing and super sized windows to create an inviting, functional living arrangement.*



*The 3030RS hidden sliding coat closet maximizes storage capacity.*





A



B



C



D



E

## FEATURES

**A** - 40" LCD/HD flatscreen TVs are standard in the living areas. 32" LCD/HD flatscreen TVs are standard in the bedrooms.

**B** - Slam-Latch baggage doors.

**C** - Trail-Air™ Equa-Flex Suspension enhances the ride while absorbing road shock to extend the life of your coach.

**D** - Serta® Dreamscape mattress, designed and manufactured exclusively for Forest River. Optional Serta® pillowtop Trump Edition mattress, (also a Forest River exclusive).

**E** - Cardinal is built with durable gel coated, vacuum bonded, laminated fiberglass sidewalls, end walls and roof on all slide outs.

**F** - The ALTA system and remote key fob controls slides, front and rear jacks, the awning and patio light.

**G** - The universal docking station is the protected, lighted, one-stop location with access to utilities, all coach water filtration system, exterior shower, winterizing kit, tank pulls, soap dispenser and cable/satellite hook-ups.

**H** - Goodyear™ tires are standard on all models with 8-lug, easy lube axles and aluminum alloy wheels.

**I** - Optional factory installed 300 lb. hitch with 3000 lb. towing capacity.

**J** - Frameless deep tinted windows enhance clean styling. Crank windows open for ventilation and easy maintenance. (Dual pane option also available.)

**K** - An easy access, full size Goodyear™ spare tire is located in the spacious pass-thru storage area, not underneath like the competition.



G



H



I



J





F

**A lot of great thinking goes into every Fifth Wheel we build**

Our engineers are continuously looking for ways to pack more luxury and convenience into every fifth wheel we build.

*Cardinal...Achieving an enhanced travel experience through ongoing innovation.*



K

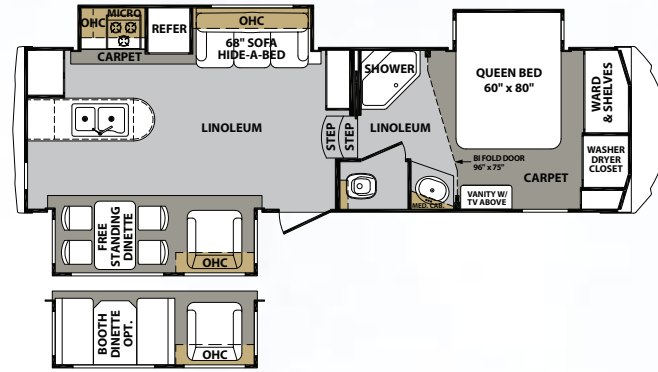


*This innovative under table top storage feature provides handy access to games, placemats, magazines and more. Extendable dual leaves and sliding base provide extra room.*

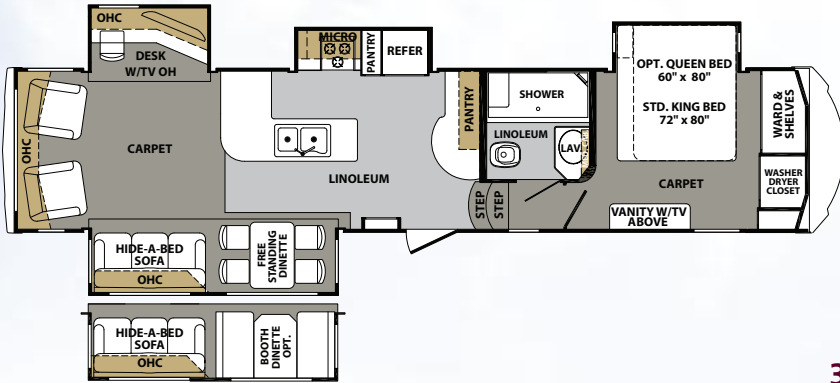




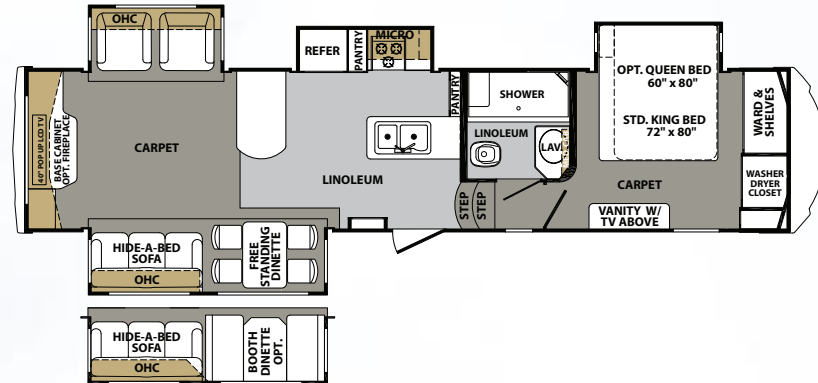
For ease of movement and safety, all Cardinal main floor slide rooms are flush floor designs. Choose from a wide selection of configurations planned to fit your lifestyle.



2975RK



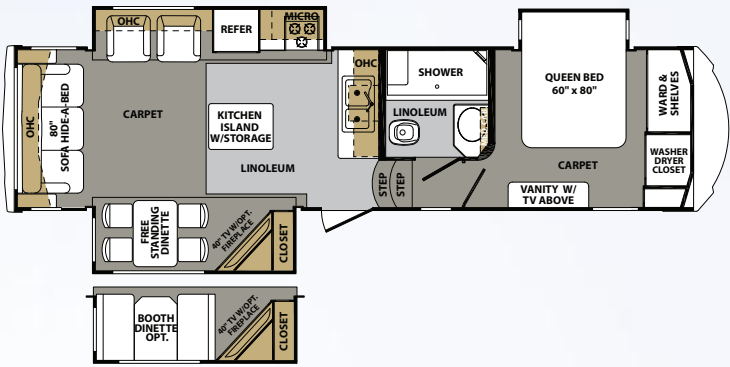
3450RL



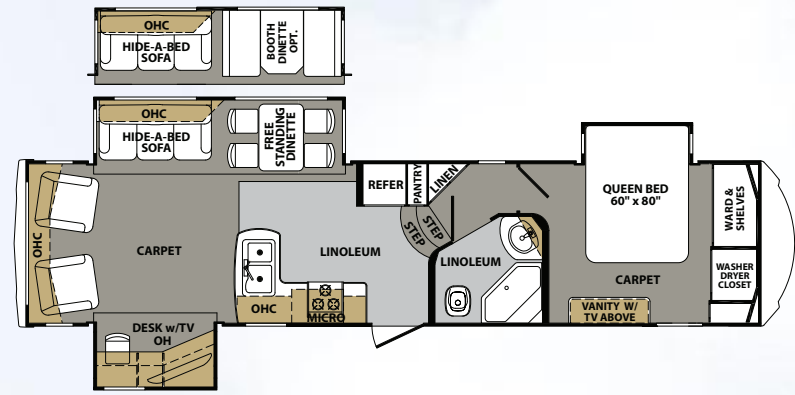
3515RT

MODEL	2975RK	3030RS	3150RL	3450RL	3515RT	3550RL	3675RT
Overall Length	31' 11"	35' 10"	38' 1"	41' 4"	39' 11"	38' 5"	39' 4"
UVW	11329	11374	11884	13234	13209	13455	12584
Hitch Weight	2370	2550	2040	2270	2525	2380	2400
GAWR	12000	12000	12000	13680	13680	13680	13680
GVWR	14370	14550	14040	15950	16205	16060	16080
Cargo Carrying Capacity	3041	3176	2156	2716	2996	2605	3496
Exterior Height	12' 6"	12' 6"	12' 6"	12' 6"	12' 6"	12' 6"	12' 6"
Exterior Width	98"	98"	98"	98"	98"	98"	98"
Interior Height (bedroom)	76 <sup>1</sup> / <sub>2</sub> "	76 <sup>1</sup> / <sub>2</sub> "	76 <sup>1</sup> / <sub>2</sub> "	76 <sup>1</sup> / <sub>2</sub> "	76 <sup>1</sup> / <sub>2</sub> "	76 <sup>1</sup> / <sub>2</sub> "	76 <sup>1</sup> / <sub>2</sub> "
Interior Height (living area)	100 <sup>1</sup> / <sub>2</sub> "	100 <sup>1</sup> / <sub>2</sub> "	100 <sup>1</sup> / <sub>2</sub> "	100 <sup>1</sup> / <sub>2</sub> "	100 <sup>1</sup> / <sub>2</sub> "	100 <sup>1</sup> / <sub>2</sub> "	100 <sup>1</sup> / <sub>2</sub> "
Tire Size	235/80R16E	235/80R16E	235/80R16E	235/80R16E	235/80R16E	235/80R16E	235/80R16E
Brake Size	12"	12"	12"	12"	12"	12"	12"
Fresh Water	77 gal.	77 gal.	77 gal.	77 gal.	77 gal.	77 gal.	77 gal.
Waste Water	120 gal.	120 gal.	120 gal.	120 gal.	120 gal.	120 gal.	120 gal.
Water Heater	12 gal.	12 gal.	12 gal.	12 gal.	12 gal.	12 gal.	12 gal.
Furnace	35000 BTU	35000 BTU	35000 BTU	42000 BTU	42000 BTU	42000 BTU	42000 BTU
Patio Awning	15'	17'	19'	19'	19'	17'	17'
Exterior Storage (cu. ft.)	93	93	93	93	93	93	93

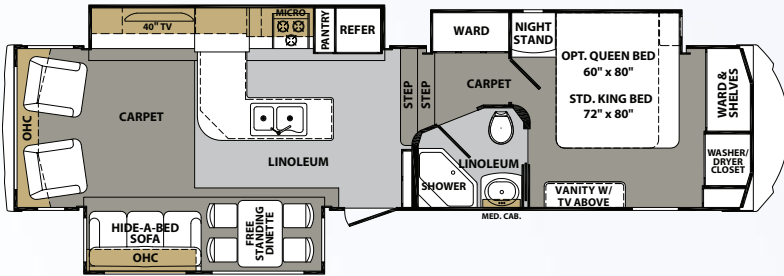




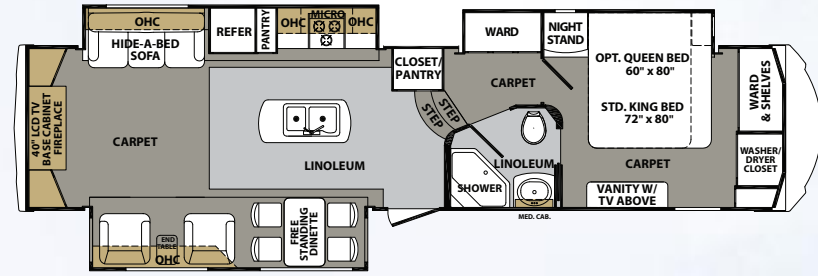
3030RS



3150RL



3550RL



3675RT

EXTERIOR OPTIONS



STANDARD GRAPHICS



STANDARD GRAPHICS WITH CUSTOM PAINT

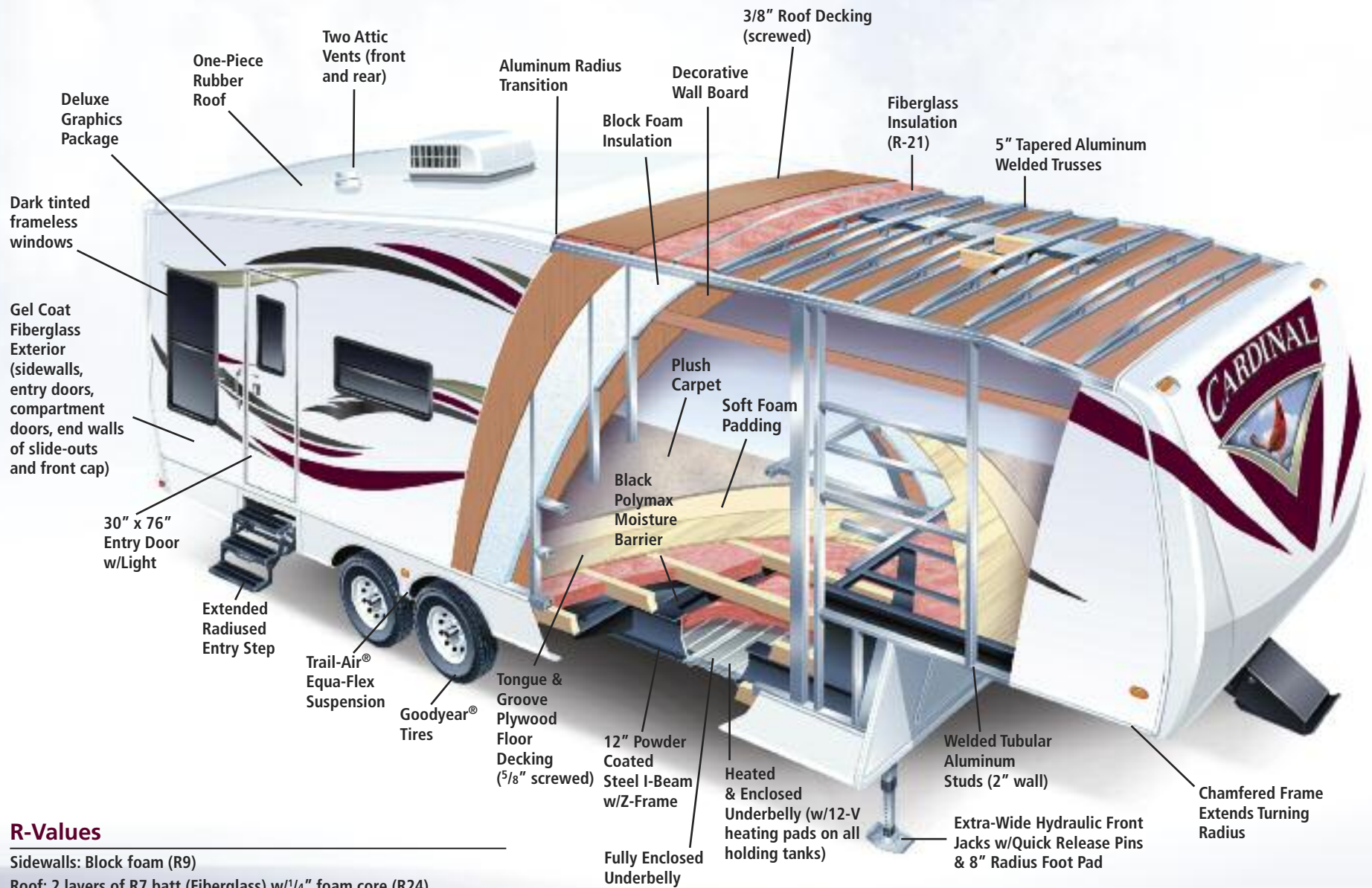


FULL BODY PAINT CREAM



FULL BODY PAINT BURGUNDY





## R-Values

Sidewalls: Block foam (R9)

Roof: 2 layers of R7 batt (Fiberglass) w/1/4" foam core (R24)

Main Floor: 2 layers of R7 batt (Fiberglass) (combined w/sub=R28)

Sub Floor: 1/4" honey combed plastic w/2 layers of R7 batt (Fiberglass)

Front Wall: R14 batt (Fiberglass) insulation

End Wall: R14 batt (Fiberglass) insulation



## STANDARD FEATURES

### INTERIOR

- Cherry hardwood raised panel glazed cabinet doors & drawers
- Cherry hardwood cabinet frames (Stiles)
- Crown molding cabinet accents
- Crown molding ceiling perimeter
- Hidden hinge adjustable cabinet hardware
- Solid wood (Baltic birch) drawer boxes
- Ball bearing, full extension drawer glides\*\*
- Congoleum "Premium Wear" flooring (2 year warranty)
- Tri-color nylon twist residential carpet
- Satin nickel cabinet hardware & accents
- Satin nickel plumbing fixtures
- Solid cherry glazed slide room fascia frame\*
- Decorative solid wood frame entry door
- Decorative border
- Solid wood exit assist handle

### GALLEY

- Solid surface polished counter tops w/undermount sink\*
- Dual bowl "GIANT" stainless steel kitchen sink
- High rise single handle pull down kitchen faucet
- Wine rack (3450RL, 3550RL)
- Solid cherry glazed raised panel refrigerator fronts\*\*

### INTERIOR LIGHTING

- Halogen recessed ceiling lights in main living area & galley\*
- Semi flush decorative ceiling light above dinette
- Ceiling fan w/light kit\*\*
- Lamp (End table) (2975RK, 3150RL, 3450RL, 3550RL & 3675RT)
- Mini pendant lights in galley (2)
- Dimmer switch

### FURNITURE & WINDOW COVERINGS

- Swivel recliners (2) w/lifetime frame warranty
- Hide-a-bed sofa w/queen air mattress\*\*
- Free standing dinette table w/dual leafs\*
- 4 Dinette chairs w/flip up storage\*
- Coat Closet
- Day/Night pleated shades\*\*
- Hard valance w/swag curtains

### BATHROOM

- Fantastic power roof vent
- Vanity-Solid surface polished counter top w/integrated bowl\*\*
- Porcelain toilet w/foot flush\*\*
- Fiberglass molded 1 piece shower w/seat\*
- "Mega" 30" x 54" fiberglass molded shower (3030RS, 3450RL, 3515RT)
- Shower skylight/dome\*\*
- Glass shower door
- Adjustable shower head
- Medicine cabinet w/mirrored door
- Towel bar
- Dedicated heat & AC duct

### BEDROOM

- Serta, premium, innerspring mattress
- Cherry head board w/padded inserts
- Designer bedspread, pillows & sham
- Full-height hanging wardrobe
- Washer/Dryer prep (Stackable)
- W/D- Dual electrical circuits (Operates W/D at same time)
- Front ward drawers
- Shoe caddy
- Cubby storage
- Chest of drawers
- Cedar lined closet\*\*
- Underbed storage
- Solid Cherry glazed slide fascia frame
- 2 Reading lights w/individual controls

### APPLIANCES

- Dometic 8 cu. Ft double door refrigerator
- 3 Burner, high output range w/22" oven & range cover
- 30" OTR Microwave oven
- 42K BTU LP furnace (34 & up)
- 35K BTU LP furnace (33 & below)
- Wire & frame for 2nd AC\*\*
- 15K Ducted AC w/quick cool feature\*\*
- 12 Gal gas/electric DSI water heater\*\*
- "Shurflo" On-demand high output water pump (3g/min at 55 PSI)
- Dual 30lb LP bottles w/auto switchover
- LP leak detector
- Carbon monoxide detector

### ELECTRONICS

- 5 Function remote control w/key fob\*
- Key fob operates slides, awning, patio light, front jacks & rear jacks
- 40" LCD HD TV w/heavy duty steel swing arm (Main living area)
- 32" LCD HD TV (Bedroom)\*
- 5.1 Home theatre system (HTS), 110 volt
- HDMI cable link between main TV & 5.1 HTS
- RCA cable link from TV to 5.1 HTS to experience TV through 5. 1 HTS\*\*
- Digital TV antenna w/signal booster\*\*
- Cable TV hook-ups (Main living & bedroom)\*\*
- Cable TV hook-up (Exterior garage bulkhead)
- Satellite prep (Roof mount at road side front mushroom cap)
- National recognized electronic brands (RCA & Toshiba)

### EXTERIOR

- High-gloss (Premium quality & thickness) gel coat exterior
- Front Cap: Molded high gloss gel coat fiberglass
- Front Cap Design: Engineered w/extended turning radius (Chamfered front)
- Rear Cap: Molded high gloss gel coat fiberglass\*
- Laminated front bulkhead w/high gloss get coat fiberglass
- Slam latch 1.5 in thick luggage doors w/high gloss get coat fiberglass
- Slide End Walls: Laminated w/high gloss gel coat fiberglass
- 30" x 76" Entry & screen door w/high gloss gel coat fiberglass
- Hehr Frameless premium windows
- Hydraulic slide room power
- Individual slide room selector switches\*\*
- Roof Ladder\*\*
- Electric awning\*\*
- Entry assist handle (XL-Folding)\*\*
- Forced air heated tanks
- 1.5" Belt rail w/caps (No exposed screws)
- Roto-cast spun seamless water/waste tanks
- Enclosed, insulated, heated underbelly (Forced air heat)\*\*
- Tank heating pads (Electric) (Dual heating sources)\*\*
- Dual roof vents

### SLIDE ROOM SEAL & GASKET SYSTEM

- Aluminum "H" frame slide room perimeter
- Dual neoprene squeeze seals
- Exterior & interior "D" seals
- Exterior "H" seal

### EXTERIOR LIGHTING

- LED docking lights (2-Mounted into front cap)
- Rear Cap Lighting: White reverse & red running/braking lights
- Security lights (3)\*\*
- Amber patio light
- Entry door auto threshold light

### UTILITY DOCKING COMPARTMENT

- Light (12 volt)
- 110 Outlet (2)
- Soap dispenser
- Outside shower (Hot & cold)
- Black tank flush system
- Fresh water & heater bypass valve
- Full coach water filtration system
- Winterizing bypass system
- Protected/insulated pull waste valves
- Waste hose storage tube
- Slam latch 1.5" luggage door

### CHASSIS/FOUNDATION

- I-beam "Z" frame power coated chassis
- Chamfered Frame Technology
- 12" Beams (34 & up) or 10" beams (33 & below)
- Dual Axles (7K w/12" beams) or (6K w/10" beams)
- Easy Lube axles\*\*
- Equa-flex suspension equalizer\*\*
- 8 Lug Hubs\*\*
- Aluminum rims 16"\*\*\*
- Goodyear Tires\*\*
- Spare tire (Inside storage mounted)
- Hydraulic front jacks\*\*
- 8" Radius front jack pads
- Electric rear stabilizing jacks\*\*
- Triple steel entry steps
- Snap pin front jack leg adjustment

- Flush floor slide design w/steel ramp & glide bar (Main room slides)
- Hydraulic slide system w/2.5' steel rams
- Hydraulic pump station w/manual override
- 18K extended hitch pin

### CONSTRUCTION

- Sidewalls: Aluminum welded frame & laminated 2" walls
- Roof: 5" Tapered aluminum trussed on 16' centers
- Front Wall: Aluminum welded frame
- Rear Wall: Aluminum welded frame
- Floor: 3' Truss w/tongue & groove plywood
- Bath/Bed Deck: Aluminum welded frame
- Slide End Walls: Aluminum welded frame, laminated
- Slide Roof: Aluminum welded frame, laminated
- Slide Floor: 1 1/8" plywood

### INSULATION

- Sidewalls: Block foam (R9)
- Roof: 2 Layers of R7 batt (Fiberglass) w/1/4" foam core (R24)
- Main floor: 2 Layers of R7 batt (Fiberglass) (combined w/sub=R28)
- Sub floor: 1/4" Honey combed plastic w/2 layers of R7 batt (Fiberglass)
- Front wall: R14 batt (Fiberglass) insulation
- End wall: R14 batt (Fiberglass) insulation

### ELECTRICAL SYSTEMS

- Centralized command center & monitor panel
- 70 Amp Converter
- 50 Amp Service\*\*
- Marine grade detachable 50 AMP power cord
- 12 Volt battery disconnect\*\*
- "Easy Diagnose" LED fuse indicator
- Battery prep box

\* = LX PACKAGE

\*\* = RED BIRD PACKAGE

## OPTIONS

### INTERIOR

- 12 Cu. ft. 4 door refrigerator
- Central vacuum system w/powered dust pan
- Fireplace
- Fantastic fan w/rain sensor in Kitchen
- Fantastic fan w/rain sensor in bedroom (N/A with 2nd AC)
- Convection microwave
- Washer/dryer stackable combination
- "Donald Trump Edition" Serta premium pillow top mattress
- Queen bed (IPO king)
- Stainless steel appliances package (Refer, oven & convection micro)
- Dinette Chair
- Booth dinette (N/A 3675RT, 3550RL)
- Leather recliners
- Cognac Soft Touch leather sofa and recliners
- Counter top extension (3150RL only)

### EXTERIOR

- Full-body custom paint package
- Partial paint package
- "Level Up" one touch automatic 6 point hydraulic leveling system
- Dual pane frameless windows
- Generator prep
- 5.5 LP Generator (Includes prep)
- Aluminum radiant foil insulation in roof
- Boat hitch (300 lb. tongue w/3000lb tow rating)
- Slide out awning toppers
- Low profile 13.5 ducted AC in bedroom
- "Trail Air" air bag/shock pin box
- "Trail Air" roto-flex extended hitch
- Outside entertainment center w/DVD & iPod control
- Outside icemaker
- Heat pump for main AC unit





# CARDINAL

by FORESTRIVER

At Cardinal we believe luxury and convenience sets the standard for travel at its finest. With a selection of seven spacious slide out floorplans, luxurious residential styling, and all the comforts of home, there's plenty of room to enjoy life's adventures in style.

*Cardinal Fifth Wheels for the many roads to adventure.*



*Chamfered  
Frame Extends  
Turning Radius*



## PRE-DELIVERY INSPECTION FACILITY

20,000 square feet of quality assurance. The bare essentials for a premium product. This state-of-the-art facility gives immediate daily feedback to production for quality assurance in every unit built.



**Forest River, Inc. encourages our customers to purchase their Forest River products from a local dealership whenever possible for the following reasons:**

- 1) Forest River, Inc. dealers are independently owned and operated businesses so priority service and scheduling is at their discretion and is often provided to customers that purchased their unit at that dealership.
- 2) Purchasing locally allows customers to establish meaningful relationships with a dealer, enhancing the RV experience through assistance with product questions, user tips or RV regulations for your state or country, and much more!
- 3) Canadian customers must meet requirements to bring an RV purchased out of the country to their home. These requirements may involve additional inspections and certifications, taxes and fees. Your local Canadian Dealer is a professional at meeting these requirements.
- 4) Scheduling timely warranty repairs and adjustments through a local dealership provides far greater flexibility and convenience to you, the customer!

It is the goal of Forest River, Inc. that all of our RV owners fully enjoy the RV experience and that customer satisfaction meets or exceeds their expectations!



### Learn More

Scan this barcode using a QR Reader on your smart phone to learn more about Forest River.



A Berkshire Hathaway company.

Your CARDINAL Dealer

Cardinal Division • 58266 State Road 19 South • Elkhart, IN 46517  
(574) 296-7700 • [www.forestriverinc.com/cardinal](http://www.forestriverinc.com/cardinal)  
[www.forestriveraccessories.com](http://www.forestriveraccessories.com)