


SUNSTAR

2012 







30T Tetramaze with Forest Cherry

LOOK AROUND

There's a lot to love in the 2012 Itasca® Sunstar® lineup. It's the perfect combination of incredible value and comfortable style in a Class A coach, with all the quality you expect from Winnebago Industries.®

You'll love the five distinct floorplans, which all include a fully loaded kitchen, walk-around queen bed in a private bedroom, and many unique features that will make every road trip you take an adventure in comfort.

The new 30T features three slideouts and an available dining table with buffet that sports a 42" LCD TV. The 26P offers an available Comfort Sofa Sleeper with two

tables and new for 2012, an available Ultraleather Euro recliner with built-in footrest.

Relax in the 36D with dual opposing sofas or choose the Comfort Sofa Sleeper and the available computer desk/workstation. Entertain in the 35F with its extendable sectional sofa that seats six, along with a guest bath mid coach and private master bathroom. The kids will love the 32K with its spacious U-shaped dinette and dual bunk beds with matching DVD players and LCD monitors.

Love it. Live it. The 2012 Itasca Sunstar: your pick for value, fun, and adventure.

Why Sunstar?

- Exceptionally priced Class A coach
- Floorplan variety ranging from 26' to 36'
- Available Ultraleather™
- Swivel cab seats
- MCD American roller shades
- Queen-size walk-around bed
- BIG Shower (35F)
- PowerLine® energy management system
- Lighted exterior compartments



DESIGNED FOR ENTHUSIASTS

Owners love their Itasca motor homes, and with good reason. The RV Dealers Association annually bestows the Quality Circle Award based on dealer ratings to manufacturers that provide exceptional products, service and support. Only one manufacturer has received this award for sixteen consecutive years: Winnebago Industries,® proud manufacturer of the Itasca Sunstar.

35F Medallion with Coffee-Glazed Vienna Maple

IT'S YOUR TIME

Relaxing comes easy with available Ultraleather cab seats that swivel to face the lounge, an LCD TV, and three available fabric collections to envelop you in stylish comfort. Every model offers a full lounge slideout for plenty of room to roam, and the 30T offers dual slideouts in the lounge.

The spacious kitchen includes a three-burner range top with storage below, microwave oven, nicely sized refrigerator, generous dinette and plentiful cabinetry. Choose the Comfort Sofa Sleeper with two tables (26P) for added flexibility. Even more upscale touches are available if you opt for the Interior Upgrade Package, such as a kitchen backsplash, raised-panel refrigerator door inserts, countertop extension (NA 36D), and sink and range covers.

Pack all the clothing you like—whether for a weekend getaway or an extended retreat—with the abundant wardrobe space in the private bedroom. An optional LCD TV is available for those who enjoy movies in bed. And you simply won't believe Winnebago Industries' exclusive BIG shower featured in the 35F, a full 36" x 36" bathing experience, which dwarfs most RV showers on the market.



35F

DISCOVER THE DIFFERENCE

The difference is in the details. Explore the exceptional products and technologies that go into making Itasca motor homes simply the best.



All sofa beds are not created equal. The **Comfort Sofa Sleeper** is wrapped in luxurious and durable Ultraleather and easily converts to a spacious bed with a self-inflating mattress so cozy, your guests won't want to leave (NA 32K, 35F).



The optional **Dash Workstation** is a great place to catch up on emails or write a letter.



Our **SmartSpace™** design philosophy shines in the well-appointed galley; Drawers are sized to maximize storage and open wide on full-extension slides for easy access.



Pack for extended vacations in his and her **Wardrobes** that sit atop a large dresser.



Have company? The **Extendable Sectional Sofa** actually expands to fit all of your guests for movie night (35F).



Staying on top of key systems is a snap with the **OnePlace® Systems Center**, which provides a single monitoring point so you can get down to the business of having fun more quickly.



Accurate readings are assured with the **TrueLevel™ Holding Tank Monitoring System's** use of sonar technology to gather data without probes that can corrode.



We redesigned the 35F and 36D **Exterior Storage Compartments** for 2012, increasing the openings by four inches, allowing for better access and more storage space to bring whatever your heart desires.

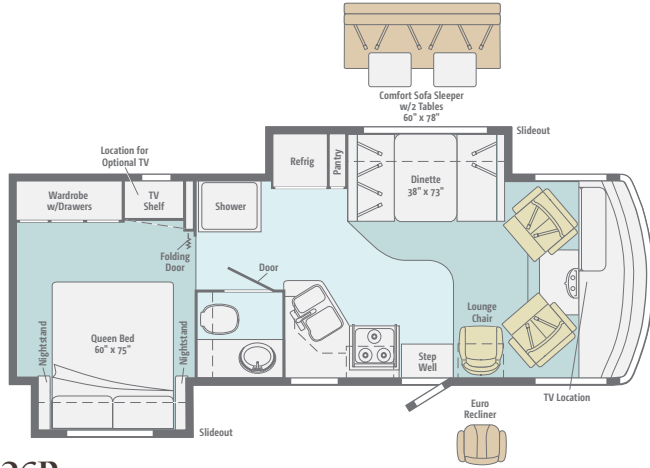


GoItasca.com is your resource for web-exclusive content and all the details you can't fit in a brochure!

FLOORPLANS & SPECIFICATIONS

Sunstar Highlights

The new triple-slideout 30T offers a variety of options, including the elegant dining table/buffet with integrated LCD TV. Each model provides a welcoming atmosphere, while those with frequent guests may prefer the 35F with the extendable sectional sofa or the 36D with facing sofas.



26P

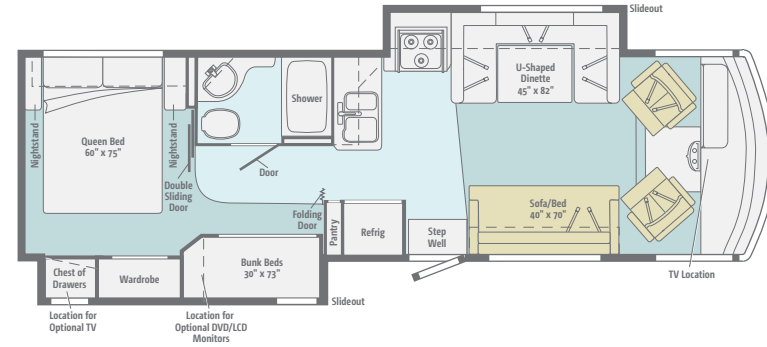


30T NEW

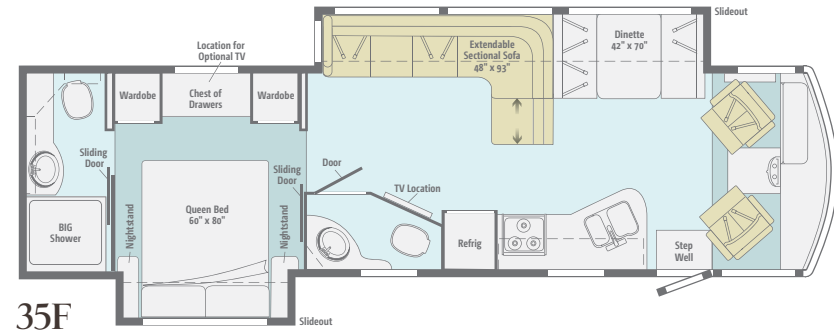
Dimensions shown are for sleeping space only and may vary due to styling differences. Dashed lines denote overhead storage areas. Floorplans and specifications are also available online at Goltasca.com.



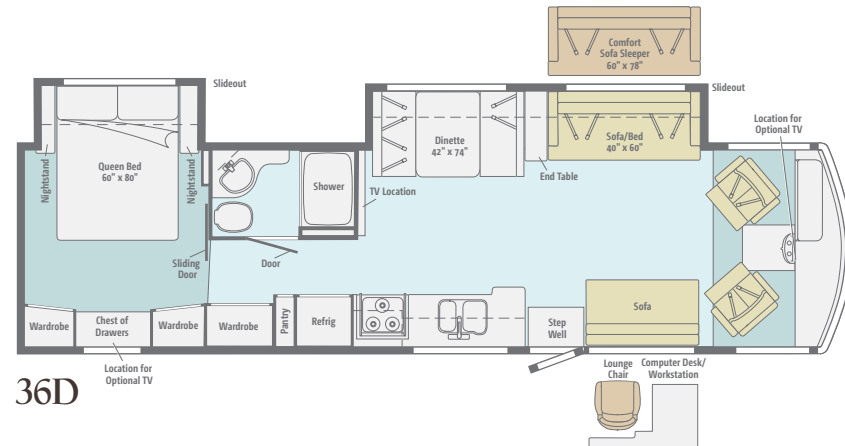
Experience the Sunstar in action—take a virtual tour at Goltasca.com.



32K



35F



36D

Chassis

Ford® F53 Chassis 362-hp 6.8L Super Duty V10 SEFI Triton® engine, TorqShift™ 5-speed automatic transmission w/ tow/haul, 175-amp. alternator

Hydraulic brakes w/ABS

Trailer Hitch® 5,000-lb. drawbar/500-lb. maximum vertical tongue weight

7-pin connector

Stainless steel wheel liners (26P, 30T, 32K)

Stylized aluminum wheels w/22.5" tires (35F, 36D)

Optional Equipment

Automatic hydraulic leveling jacks (front and rear)

Cab Conveniences

Cab Seats armrests, lumbar support and multi-adjustable slide/recline/swivel

AM/FM stereo CD player

Chassis/house battery radio power switch

Power steering w/tilt wheel

Cab wraparound curtain

Cruise control

12-volt powerpoints

Map lights

Sunvisors

C.B. wire prep

Manually adjustable mirrors w/convex

Optional Equipment

Rearview monitor system w/color camera, one-way audio and color LCD monitor

Sideview video camera system w/color monitor (requires rearview monitor system)

Power mirrors w/defrost

6-way power driver seat

Dual-speed defroster fans

AM/FM stereo w/CD/DVD player, input jack, remote and alarm clock

Dash workstation

Interior

32" LCD TV (NA 36D)

42" LCD TV (36D)

Amplified digital TV antenna system

Key-activated slideroom master lock switch

Satellite system ready

MCD American Solo® blackout roller shades (lounge, dinette, bedroom)

Mini blinds (galley)

OnePlace® systems center

Roof vent (lounge)

Powered roof vent (bath)

Tinted windows

Optional Equipment

42" LCD TV w/dining table/buffet (30T)

32" LCD TV (36D)

Tinted, dual-glazed thermo-insulated windows

MCD American Duo® solar/blackout roller shades (lounge, dinette, bedroom)

Powered ventilator fan (lounge)

Vinyl floorcovering (excludes cab, slideroom floor and bedroom) (26P, 30T and 32K)

Satellite dish antenna w/remote control extender

Interior Upgrade Package soft vinyl ceiling, kitchen backsplash, Dream Dinette™ dining table, range cover, 2 sink covers, raised-panel refrigerator inserts, 2 throw pillows, flip-up countertop extension (26P, 30T, 32K, 35F)

Kitchen

Thermo-formed laminated countertops

2-door refrigerator/freezer

Microwave oven (26P, 30T, 32K)

Vented range hood (26P, 30T, 32K)

Microwave oven w/range fan (35F, 36D)

3-burner range top w/storage below

Optional Equipment

3-burner range w/oven

Microwave/convection oven (26P, 30T, 32K)

Microwave/convection oven w/range fan (35F, 36D)

Bath

Thermo-formed laminated countertop

Flexible showerhead

Textured glass shower door

Skylight

Bedroom

Innerspring mattress

Bedsread, pillows and shams

Storage area below bed

Bunk beds w/foam mattresses, mattress covers and privacy curtains (32K)

Optional Equipment

2 DVD players w/8.5" LCD monitors and headphones (32K bunk beds)

19" LCD TV w/cable wall input

Exterior

Premium high-gloss sidewall skin

Automatic entrance door steps

Mud flaps

Porch light

Lighted storage compartments

Optional Equipment

Lower front protective mask (w/full-body paint only)

Powered patio awning

Ladder

Entertainment Center AM/FM stereo, CD player, remote, AC duplex, DC receptacle, removable TV table, speakers and lockable compartment (26P, 30T, 32K)

Entertainment Center 32" LCD TV w/remote, AM/FM stereo w/DVD player w/remote, speakers (35F, 36D)

Heating & Cooling System

14,800 BTU roof-mount air conditioner (26P, 30T)

Two high-efficiency roof-mount air conditioners w/energy management system (32K, 35F, 36D)

30,000 BTU, low-profile furnace (26P, 30T)

35,000 BTU, low-profile furnace (32K)

40,000 BTU, low-profile furnace (35F, 36D)

Optional Equipment

A/C heat pump (26P, 30T)

Two high-efficiency A/C heat pumps (32K, 35F, 36D)

Electrical System

AC/DC load center, 45-amp. converter/charger (26P, 30T)

AC/DC electrical distribution system, 45-amp. converter/charger (32K, 35F, 36D)

30-amp. power cord

PowerLine® energy management system (32K, 35F, 36D)

4,000-watt Cummins Onan® MicroQuiet™ gas generator (26P, 30T)

5,500-watt Cummins Onan Marquis Gold™ gas generator (32K, 35F, 36D)

2 deep-cycle Group 24 batteries

Battery disconnect system (chassis and coach)

Automatic dual battery charge control

Auxiliary start circuit

Exterior TV jack and AC duplex receptacle

Optional Equipment

50-amp. power cord, shoreline/generator automatic changeover switch (32K, 35F, 36D)

1,000-watt AC/DC inverter w/remote panel

Plumbing System

Service Center colored labels, cable TV input, pressurized city water hookup w/diverter valve, drainage valves, portable satellite dish hookup, power cord, 10' sewer hose

6-gallon LP water heater

Heated holding-tank compartment

Permanent-mount LP tank w/gauge

On-demand water pump

TrueLevel™ holding-tank monitoring system

Winterization Package water heater bypass valve and siphon tube

Optional Equipment

Exterior wash station w/lighted pump switch

6-gallon 110 V/LP water heater w/motoraid

Safety

Seat belts

Child seat tether anchor (forward facing dinette bench)

LP, smoke and carbon monoxide detectors

10 BC fire extinguisher

Ground fault interrupter

High-mount brake lamp

Warranty⁷

12-month/15,000-mile basic limited warranty⁸

36-month/36,000-mile limited warranty on structure⁸

10-year limited parts and labor warranty on roof skin⁸

- ¹ The height of each model is measured to the top of the tallest standard feature and is based on the curb weight of a typically equipped unit. The actual height of your vehicle may vary by several inches depending on chassis or equipment variations. Please check with your dealer for further information.
- ² Sunstar floorplans feature a wide-body design – over 96". In making your purchase decision, you should be aware that some states restrict access on some or all state roads to 96" in body width. Before making your purchase decision, you should confirm the road usage laws in the states of interest to you.
- ³ The load capacity of your motor home is designated by weight, not by volume, so you cannot necessarily use all available space when loading your motor home.
- ⁴ Capacities are based on measurements prior to tank installation. Slight capacity variations can result due to installation applications.
- ⁵ Capacities shown are tank manufacturer's listed water capacity (W.C.). Actual filled LP capacity is 80% of listing due to overfilling prevention device on tank.
- ⁶ Actual towing capacity is dependent on your particular loading and towing circumstances which includes the GVWR, GAWR, and GCWR as well as adequate trailer brakes. Please refer to the Operator's Manual of your vehicle for further towing information.
- ⁷ See separate chassis warranty.
- ⁸ See your dealer for complete warranty information.

NA Not Available

Not all items available in combination. See dealer for details.

Winnebago Industries® continuing program of product improvement makes specifications, equipment, model availability, and prices subject to change without notice. Comparisons to other motor homes are based on the most recent information available at printing.

Weights & Measures

	26P	30T	32K	35F	36D
Length	26'11"	30'11"	33'1"	35'3"	36'3"
Exterior Height ¹	12'1"	12'2"	12'4"	12'5"	12'5"
Exterior Width ²	8'5.5"	8'5.5"	8'5.5"	8'5.5"	8'5.5"
Exterior Storage ³ (cu. ft.)	54	78.4	84	130.5	137
Awning Length	11'6"	17'	13'	16'	18'
Interior Height	6'8"	6'8"	6'8"	6'8"	6'8"
Interior Width	8'0.5"	8'0.5"	8'0.5"	8'0.5"	8'0.5"
Freshwater Capacity w/Heater ⁴ (gal.)	60	84	76	80	74
Holding Tank Capacity - Black/Gray ⁴ (gal.)	43/38	41/42	46/58	41 & 21*/51	48/45
LP Capacity ⁵ (gal.)	18	18	18	18	18
Fuel Capacity (gal.)	80	80	80	80	80
GCWR ⁶ (lbs.)	26,000	26,000	26,000	26,000	26,000
GVWR (lbs.)	16,000	18,000	20,500	22,000	22,000
GAWR - Front (lbs.)	6,500	7,000	7,000	8,000	8,000
GAWR - Rear (lbs.)	11,000	12,000	13,500	15,000	15,000
Wheelbase	158"	190"	208"	228"	242"

* The 35F uses separate black tanks for each bathroom

TAKE A TOUR



We're proud of our processes, state-of-the-art facilities and the people who make Winnebago Industries number one. We invite you to visit our complex in Forest City, Iowa, for a first-hand look at the dedication and technology behind every motor home we build.

NO SHORTCUTS — NO COMPROMISES

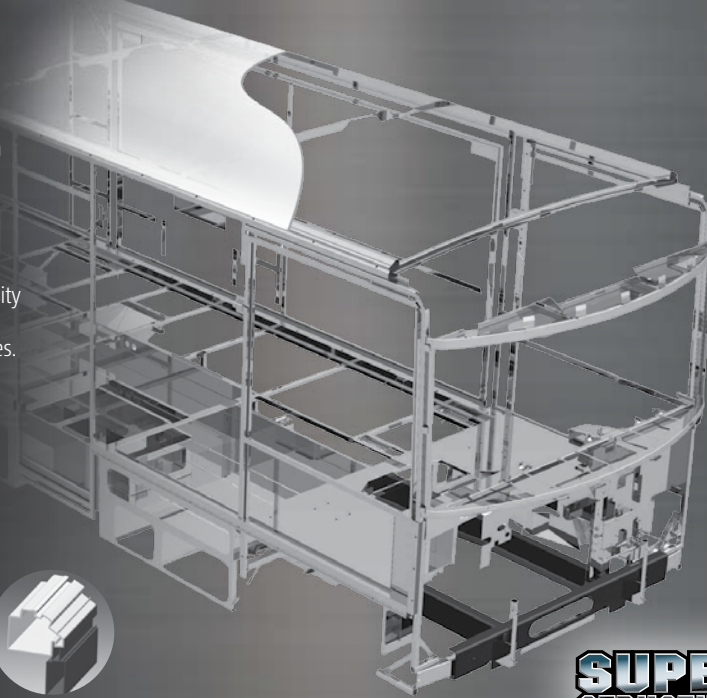
The crowned, one-piece **fiberglass roof** is backed by a 10-year limited parts-and-labor roof skin warranty. Fiberglass offers superior strength and durability over less attractive rubber roofs found on so many competitive models that can streak and degrade over time.

Durable, lightweight **Thermo-Panel® sidewalls** combine fiberglass, high-density block-foam insulation and the inner wall surface with aluminum support structures.

Metal substructures secure cabinets and appliances to add safety and stability.

An **electrodeposition coating** helps protect critical steel components.

Specially engineered **interlocking joints** connect the floor, sidewalls and roof into a cohesive unit.



**SUPER
STRUCTURE**



You can compare features. You can compare styles. But when it comes to quality construction, there is no comparison. Only motor homes manufactured by Winnebago Industries harness the legendary strength and durability of our SuperStructure® construction process—a process we've been perfecting for more than 50 years.

SuperStructure means a solid framework, steel and aluminum substructures and components built in-house to our exacting standards. It means managing each detail to ensure the integrity and quality of every coach. It means barcoding parts to save time and frustration during service and running every coach through a high-pressure leak test before it leaves the factory.

Where other manufacturers cut corners, SuperStructure ensures the features you can't see are treated with the same care as the ones you can. When you buy an Itasca motor home, you are getting a coach that is built for you—and built to last.

EXTERIORS

The Sunstar comes with standard graphics, deluxe graphics or available full-body paint.



STANDARD GRAPHICS



Autumnwood
DELUXE GRAPHICS



Smoke
DELUXE GRAPHICS



Sedona Bronze
FULL-BODY PAINT



Vintage Red
FULL-BODY PAINT



Dark Gray Mica
FULL-BODY PAINT

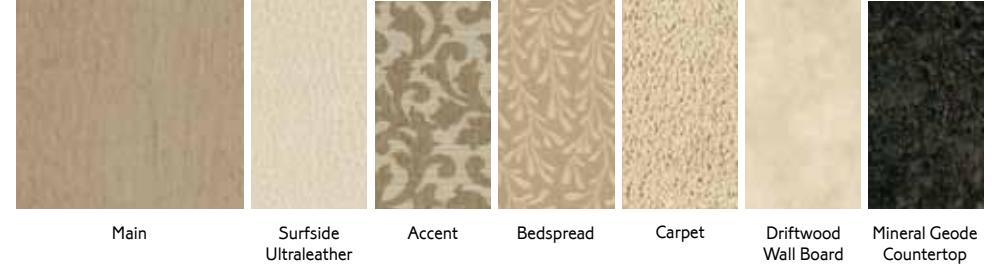


Pearl
FULL-BODY PAINT

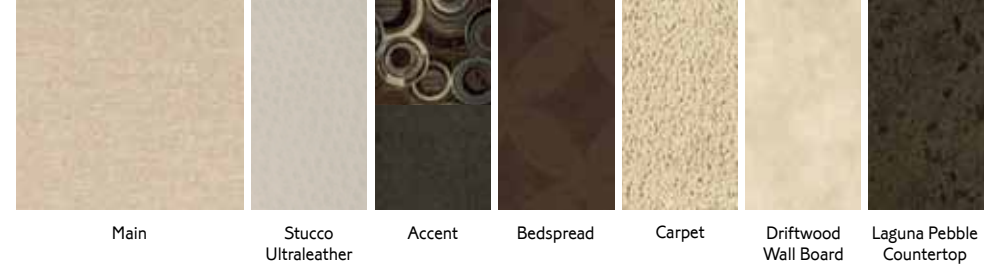
DÉCOR

Choose from three fabric collections. Upgrade to Ultraleather™ furniture for luxurious comfort that is both durable and easy to clean. The cabinetry comes in your choice of Forest Cherry or Coffee-Glazed Vienna Maple finish with satin nickel hardware for a warm, inviting interior.

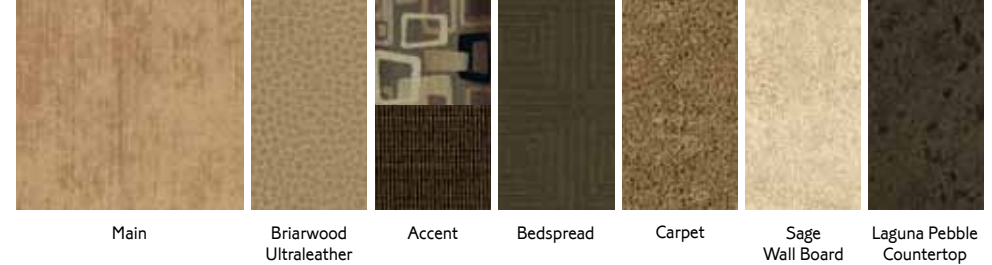
Medallion *Elegant fabric palette with ornate detailing evokes an era of days gone by.*



Mahogany Nite *Bold yet refined mix of light and dark colors with a dash of playful circles.*



Tetramaze *Inviting earthy palette of toffee and charcoal warmly surrounds with whimsical accents.*



Forest Cherry

Coffee-Glazed
Vienna Maple

Fabrics and carpets may change without notice or obligation.

DON'T MISS OUT



Caravans, rallies, local and state events, and exclusive RV travel benefits can all be yours as a WIT Club member – and you can meet like-minded folks that possess the same enthusiasm for traveling this great nation of ours. It's a wonderful way to make your Sunstar a way of life. Learn more about the Winnebago-Itasca Travelers Club at WITclub.com.

Members enjoy:

- Caravans and Rallies
- Local and State Group Activities
- RV Travel Benefits



Four simple questions
to ask *before* you buy.

visit
BetterBuiltRVs.com

COMMITTED TO SERVICE

We back our motor homes with best-in-class support both before and after the sale:



- 12-month/ 15,000-mile basic limited warranty
- 36-month/36,000-mile limited warranty on structure
- 10-year standard limited parts-and-labor roof skin warranty
- Complimentary 24-hour roadside assistance program
 - RV Technical Assistance Hotline
 - RV Service Appointment Assistance
 - Emergency Trip Interruption
 - Emergency Message Service
 - Nationwide Trip Routing
 - Fee-Free Travelers Cheques
- TripSaver Fast Track Parts guarantees that in-stock warranty parts ship directly to your dealer within 24 hours
- National dealer service network



NYSE: WGO
Goltasca.com

THE MOST RECOGNIZED
NAME IN MOTOR HOMES*



For Sales and Service Information Contact: