


# SUNOVA

2012 





ON THE COVER: 33C Sandstone Deluxe Graphics



30A Smoke Screen with Forest Cherry



33C Harvest with Coffee-Glazed Vienna Maple

## EXPERIENCE THE DIFFERENCE

Enjoying the simple pleasures of the Class A lifestyle has never been easier, thanks to the 2012 Itasca Sunova,<sup>®</sup> a shining star in this year's lineup. With four exceptional models and a host of premium amenities standard, Sunova is an incredible value at a friendly price.

Comfort comes easy with Ultraleather<sup>™</sup> cab seats that swivel to face the spacious lounge, where you can choose the extendable sectional sofa with the new wall-away recliner (36V) or the Comfort Sofa Sleeper (33C, 35J) and Euro recliner with built-in footrest. You'll feel right at home with elegant features like Corian<sup>®</sup> countertops in the kitchen and MCD American roller shades in the lounge, dinette and bedroom. The 42" LCD TV sits on a sliding bracket (30A) for optimal viewing even without the slideouts extended.

All this, plus more than fifty years of manufacturing excellence, and it's clear the Itasca Sunova is a coach you'll be proud to own for years to come.

### Why Sunova?

- Four innovative floorplans 30' to 36'
- Corian countertops in the kitchen
- MCD American roller shades
- Swivel Ultraleather cab seats
- Spacious bedrooms
  - Queen bed standard 30A, 33C and 36V
  - King bed and bunk beds standard on 35J
  - King bed available on 33C and 36V
- Available Ultraleather on select furniture pieces
- Extendable sectional U-shaped dinette on 30A



## DESIGNED FOR ENTHUSIASTS

Owners love their Itasca motor homes, and with good reason. The RV Dealers Association annually bestows the Quality Circle Award based on dealer ratings to manufacturers that provide exceptional products, service and support. Only one manufacturer has received this award for sixteen consecutive years: Winnebago Industries,<sup>®</sup> proud manufacturer of the Itasca Sunova.

## THE PLEASURES IN LIFE

You will want to spend time in the kitchen admiring your choice of three cabinet woods that offer an abundance of storage with a pullout pantry. It nicely complements the three-burner range or available three-burner range/oven combination and the 30" microwave oven with vented range fan. Preparing food is a pleasure on Corian countertops, new for 2012. If you want more cold storage, you can upgrade to the available large capacity refrigerator/freezer complete with icemaker (30A, 35J) or a four-door refrigerator/freezer with icemaker (33C, 36V). Range and sink covers cleverly provide additional counter space, and the flip-up countertop extension (33C, 35J) does the same.

Dine in style with the BenchMark full comfort dinette or the new extendable sectional U-shaped dinette in the 30A; both double as comfy beds when needed. The 33C offers an available dining table and chair configuration with a richly appointed buffet and a 42" LCD TV.

The Sunova houses an elegant and sizable bedroom. A queen or king bed adjoins plentiful wardrobe space and an available 19" LCD TV (35J) or 26" LED TV (30A, 33C, 36V) for late-night movies. The 35J offers additional bunk beds outfitted with available DVD players and 8.5" LCD monitors.



30A



For lounging or dining, the plush and cozy **Extendable Sectional U-Shaped Dinette** gives you ample dining space and easily converts to a comfortable bed (30A).

# DISCOVER THE DIFFERENCE

The difference is in the details. Explore the exceptional features and technologies that go into making Itasca motor homes simply the best.



The large **LCD TV** slides out to be seen even with the slideout retracted (30A).



Take the fun outside with the available **Exterior Entertainment Center** that includes a 32" LCD TV, CD/DVD player, AM/FM and two speakers in a lockable compartment.



Our SmartSpace™ design philosophy shines in the well-appointed galley. Drawers are sized to maximize storage and open wide on **Full-Extension Slides** for easy access.



Controlling light, heat and privacy is easy thanks to the available **Powered Sunvisor** with both solar and blackout shades.



Write letters or plan your trip at the **Dash Workstation**, positioned perfectly in front of the passenger cab seat.



The mirrored wardrobe and **Bedroom Vanity** make it easy to pick your outfit and get ready for the day's adventures or a night out.



With our available smoothly retracting **MCD American Duo® Solar/Blackout Roller Shades** you can control just how much light and privacy you want—no matter the time of day. MCD Solo® shades come standard.



The name **Comfort Sofa Sleeper** says it all: by day a plush couch for lounging, at night a comfortable, full-sized bed with a self-inflatable mattress (available 33C, 35J).



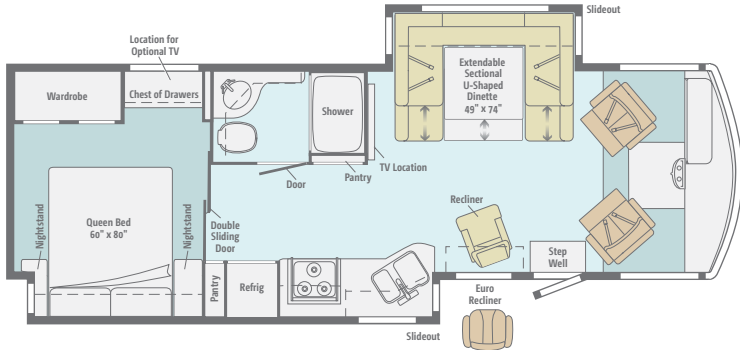
Other motor homes employ tank monitors with probes that can corrode. Our **TrueLevel™ Tank Monitoring System** harnesses sonar technology to provide accurate readings every time.



**GoItasca.com** is your resource for web-exclusive content and all the details you can't fit in a brochure!

# FLOORPLANS & SPECIFICATIONS

Dimensions shown are for sleeping space only and may vary due to styling differences. Dashed lines denote overhead storage areas. Floorplans and specifications are also available online at [Goltasca.com](http://Goltasca.com).



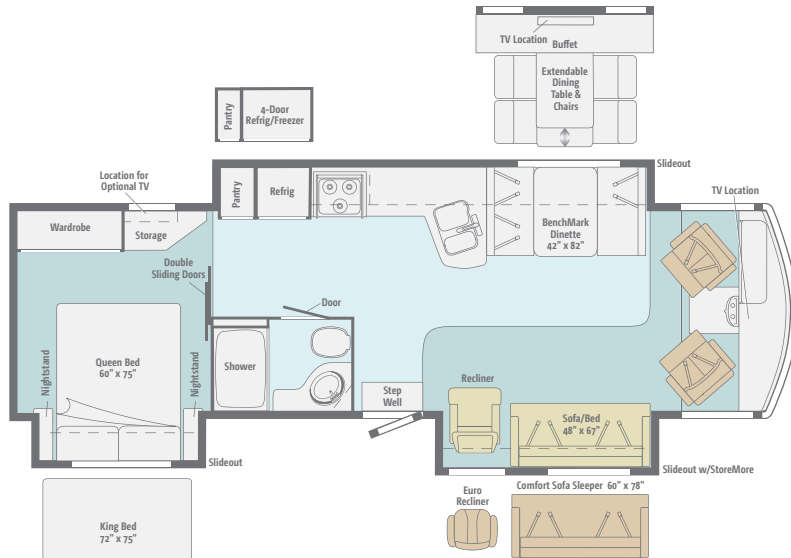
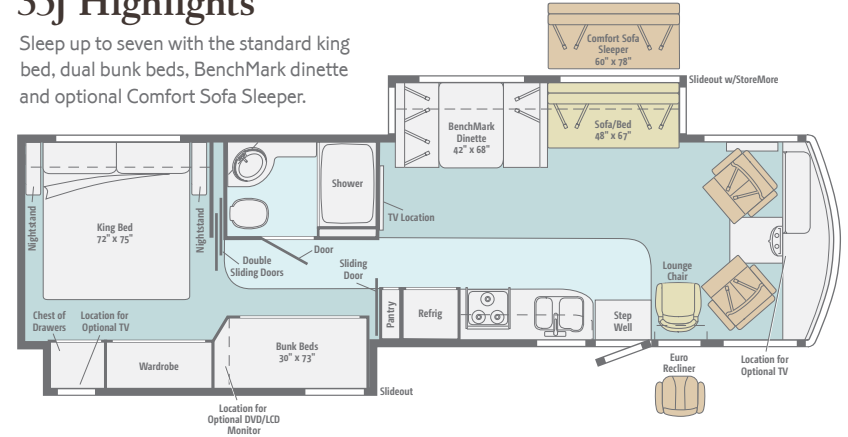
**NEW**

## 30A Highlights

Double slideouts and the all-new extendable sectional U-shaped dinette hallmark this new floorplan.

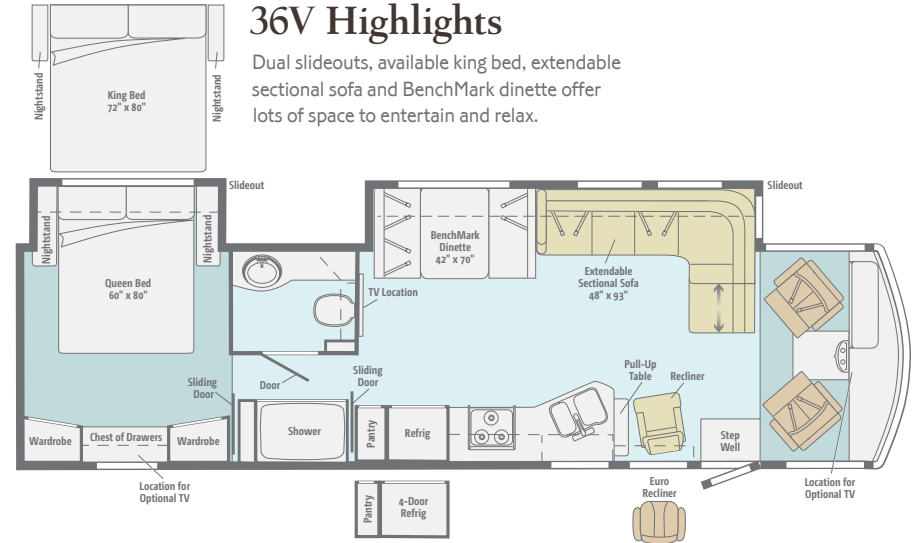
## 35J Highlights

Sleep up to seven with the standard king bed, dual bunk beds, BenchMark dinette and optional Comfort Sofa Sleeper.



## 33C Highlights

Triple slideouts, generous lounging space and multiple furniture configurations give you plenty to love.



## 36V Highlights

Dual slideouts, available king bed, extendable sectional sofa and BenchMark dinette offer lots of space to entertain and relax.



Experience the Sunova in action—take a virtual tour at [Goltasca.com](http://Goltasca.com).

## Chassis

**Ford® F53 Chassis** 362-hp 6.8L Super Duty V10 SEFI Triton® engine, TorqShift™ 5-speed automatic transmission w/tow haul, Hydro-Max™ power brakes, 4-wheel ABS, 175-amp. alternator

**7-pin trailer wiring**

**Trailer Hitch**® 5,000-lb. drawbar/500-lb. maximum vertical tongue weight

**Automatic hydraulic leveling jacks w/3-position controls**

**Stylized aluminum wheels w/22.5" tires**

## Cab Conveniences

**Cab Seats** armrests, lumbar support and multi-adjustable slide/recline/swivel

**Stereo System** AM/FM, CD/DVD player, alarm clock, front input jack and remote

**Chassis/house battery radio power switch**

**Power assist steering w/tilt wheel**

**12-volt powerpoint**

**Cruise control**

**Power mirrors w/defrost**

**Map lights**

**Sunvisors**

**C.B. wire prep**

**Cab wraparound curtain**

**Rearview color monitor system w/one-way audio**

**Dash workstation**

### *Optional Equipment*

**Sideview color camera monitor system**

**Defroster fans**

**MCD American Duo®** powered front shade w/solar and blackout shades, privacy curtains for driver and passenger windows  
**6-way power driver seat**

## Interior

**32" LCD TV** (33C)

**42" LCD TV** (35J, 36V)

**42" LCD TV** mounted to a locking extendable slide system (30A)

**Amplified digital HDTV antenna system**

**Satellite system ready**

**Soft vinyl ceiling**

**MCD American Solo®** blackout roller shades (lounge, dinette and bedroom)

**Mini blinds** (kitchen) (30A, 35J, 36V)

**OnePlace® systems center**

**Tinted windows**

**Powered ventilator fan** (lounge)

**Powered roof vent** (bath)

**Key-activated slideroom master lock switch**

### *Optional Equipment*

**32" LCD TV** (35J, 36V)

**42" LCD TV** w/dining table/buffet (33C)

**MCD American Duo solar/blackout roller shades** (lounge, dinette and bedroom)

**Tinted, dual-glazed, thermo-insulated windows**

**Vinyl floor covering** (front to bedroom; cab area, slideouts and bedroom carpeted) (33C, 35J)

**Satellite dish antenna w/remote extender**

## Kitchen

**Corian®** solid-surface countertop and sink covers

**Backsplash**

**Flip-up countertop extension** (33C, 35J)

**2-door refrigerator/freezer**

**Microwave oven w/vented range fan**

**3-burner range top w/cover and storage below**

### *Optional Equipment*

**Microwave/convection oven w/vented range fan**

**Large capacity 2-door refrigerator/freezer w/icemaker and water filter** (30A, 35J)

**4-door refrigerator/freezer w/icemaker** (33C, 36V)

**3-burner range w/oven**

## Bath

**Thermo-formed laminated countertop**

**Flexible showerhead**

**Sliding, textured glass shower door**

**Skylight**

## Bedroom

**Innerspring mattress**

**Bedsread, pillows and shams**

**Bunk beds w/foam mattresses, mattress covers, pillows w/shams and privacy curtains** (35J)

### *Optional Equipment*

**2 DVD players w/headphones, 8.5" LCD monitors** (bunk area 35J)

**19" LCD TV, DVD cable ready** (35J)

**26" LED TV, DVD cable ready** (30A, 33C, 36V)

## Exterior

**Main entrance w/screen door**

**Automatic entrance door steps**

**Porch light**

**Lighted storage compartments**

**Premium smooth high-gloss skin**

**KeyOne™** lock system

**Front mud flaps**

**Ladder**

**Powered patio awning**

### *Optional Equipment*

**Second powered patio awning** (above entrance door) (30A)

**Entertainment Center** 32" LCD TV, AM/FM stereo, DVD player, remote (NA 35J w/range/oven option)

**Lower front protective mask** (w/full-body paint)

## Heating & Cooling System

**Two high-efficiency roof air conditioners w/energy management system**

**35,000 BTU low-profile ducted furnace** (30A, 33C)

**40,000 BTU low-profile ducted furnace** (35J, 36V)

### *Optional Equipment*

**Two high-efficiency air conditioners w/heat pumps**

## Electrical System

**AC/DC electrical distribution system, 55-amp. converter/charger**

**50-amp. power cord**

**5,500-watt Cummins Onan® Marquis Gold™** gas generator

**Generator/shoreline automatic changeover switch**

**Two deep-cycle, Group 31 batteries**

**Chassis and coach battery disconnect systems**

**PowerLine®** energy management system

**Automatic dual-battery charge control**

**Auxiliary start circuit**

**Exterior antenna jack and AC duplex receptacle**

*Optional Equipment*  
**1,000-watt inverter**

## Plumbing System

**Service Center** color-coded labels, cable TV input, pressurized city water hook-up w/diverter valve, 3" drainage valve, portable satellite dish hook-up, power cord, 10' sewer hose, QuickPort®, exterior wash station w/lighted pump switch

**Permanent-mount LP tank**

**On-demand water pump**

**TrueLevel™** holding-tank monitoring system

**Winterization Package** water heater bypass valve and siphon tube

**Heated holding-tank compartment**

**6-gallon 110 V/LP water heater w/motoraid/auto heater**

## Safety

**Seat belts**

**Child seat tether anchor in forward-facing dinette seat** (30A, 35J, 36V)

**LP, smoke and carbon monoxide detectors**

**10 BC fire extinguisher**

**Ground fault interrupter**

**High-mount brake lamp**

## Warranty<sup>7</sup>

**12-month/15,000-mile basic warranty<sup>8</sup>**

**36-month/36,000-mile limited warranty on structure<sup>8</sup>**

**10-year limited parts-and labor warranty on roof skin<sup>8</sup>**

- The height of each model is measured to the top of the tallest standard feature and is based on the curb weight of a typically equipped unit. The actual height of your vehicle may vary by several inches depending on chassis or equipment variations. Please contact your dealer for further information.
- Sunova floorplans feature a wide-body design – over 96." In making your purchase decision, you should be aware that some states restrict access on some or all state roads to 96" in body width. Before making your purchase decision, you should confirm the road usage laws in the states of interest to you.
- The load capacity of your motor home is designated by weight, not by volume, so you cannot necessarily use all available space when loading your motor home.
- Capacities are based on measurements prior to tank installation. Slight capacity variations can result due to installation applications.
- Capacities shown are tank manufacturer's listed water capacity (W.C.). Actual filled LP capacity is 80% of listing due to overfilling prevention device on tank.
- Actual towing capacity is dependent on your particular loading and towing circumstances which includes the GVWR, GAWR, and GCWR, as well as adequate trailer brakes. Please refer to the Operator's Manual of your vehicle for further towing information.
- See separate chassis warranty.
- See your dealer for complete warranty information.

NA Not Available

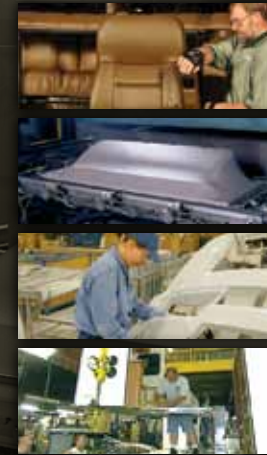
Not all items available in combination. See dealer for details.

Winnebago Industries® continuing program of product improvement makes specifications, equipment, model availability, and prices subject to change without notice. Comparisons to other motor homes are based on the most recent information available at printing.

## Weights & Measures

	30A	33C	35J	36V
Length	31'1"	34'6"	35'10"	37'8"
Exterior Height <sup>1</sup>	12'6"	12'5"	12'6"	12'6"
Exterior Width <sup>2</sup>	8'5.5"	8'5.5"	8'5.5"	8'5.5"
Exterior Storage <sup>3</sup> (cu. ft.)	66.4	93.5	118.0	161.7
Awning Length	15'6"	19'	14'	20'
Interior Height	6'8"	6'8"	6'8"	6'8"
Interior Width	8'0.5"	8'0.5"	8'0.5"	8'0.5"
Freshwater Capacity w/Heater <sup>4</sup> (gal.)	86	79	76	86
Holding Tank Capacity - Black/Gray <sup>4</sup> (gal.)	38/53	39/60	46/48	38/50
LP Capacity <sup>5</sup> (gal.)	18	18	18	18
Fuel Capacity (gal.)	80	80	80	80
GCWR <sup>6</sup> (lbs.)	26,000	26,000	26,000	26,000
GVWR (lbs.)	22,000	22,000	22,000	22,000
GAWR - Front (lbs.)	8,000	8,000	8,000	8,000
GAWR - Rear (lbs.)	15,000	15,000	15,000	15,000
Wheelbase	190"	220"	228"	242"

## TAKE A TOUR



We're proud of our processes, state-of-the-art facilities and the people who make Winnebago Industries number one. We invite you to visit our complex in Forest City, Iowa, for a first-hand look at the dedication and technology behind every motor home we build.

# NO SHORTCUTS – NO COMPROMISES

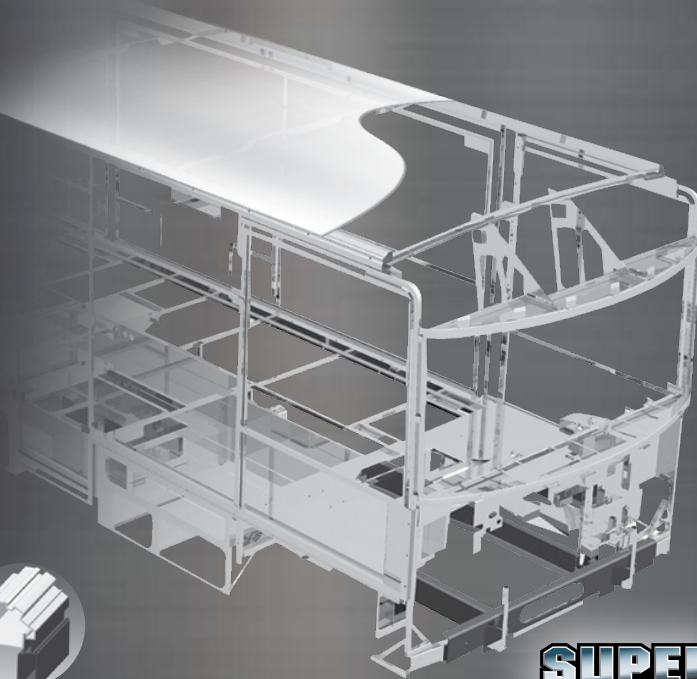
The crowned, one-piece **fiberglass roof** is backed by a 10-year limited parts-and-labor roof skin warranty. Fiberglass offers superior strength and durability over less attractive rubber roofs found on so many competitive models that can streak and degrade over time.

Durable, lightweight **Thermo-Panel® sidewalls** combine fiberglass, high-density block-foam insulation and the inner wall surface with aluminum support structures.

**Metal substructures** secure cabinets and appliances to add safety and stability.

An **electrodeposition coating** helps protect critical steel components.

Specially engineered **interlocking joints** connect the floor, sidewalls and roof into a cohesive unit.



**SUPER  
STRUCTURE**



You can compare features. You can compare styles. But when it comes to quality construction, there is no comparison. Only motor homes manufactured by Winnebago Industries harness the legendary strength and durability of our SuperStructure® construction process—a process we've been perfecting for more than 50 years.

SuperStructure means a solid framework, steel and aluminum substructures and components built in-house to our exacting standards. It means managing each detail to ensure the integrity and quality of every coach. It means barcoding parts to save time and frustration during service and running every coach through a high-pressure leak test before it leaves the factory.

Where other manufacturers cut corners, SuperStructure ensures the features you can't see are treated with the same care as the ones you can. When you buy an Itasca motor home, you are getting a coach that is built for you—and built to last.



# EXTERIORS

The Sunova comes with deluxe graphics or choose one of the four full-body paint designs.



**Granite**  
DELUXE GRAPHICS



**Sandstone**  
DELUXE GRAPHICS



**Sandalwood**  
FULL-BODY PAINT



**Silver Mist**  
FULL-BODY PAINT



**Gunmetal**  
FULL-BODY PAINT



**Meadow Mist**  
FULL-BODY PAINT

# DÉCOR

Choose from three fabric collections. Upgrade to Ultraleather™ furniture for luxurious comfort that is both durable and easy to clean. The cabinetry comes in your choice of Honey Cherry, Forest Cherry or Coffee-Glazed Vienna Maple finish with satin nickel hardware for a warm, inviting interior.

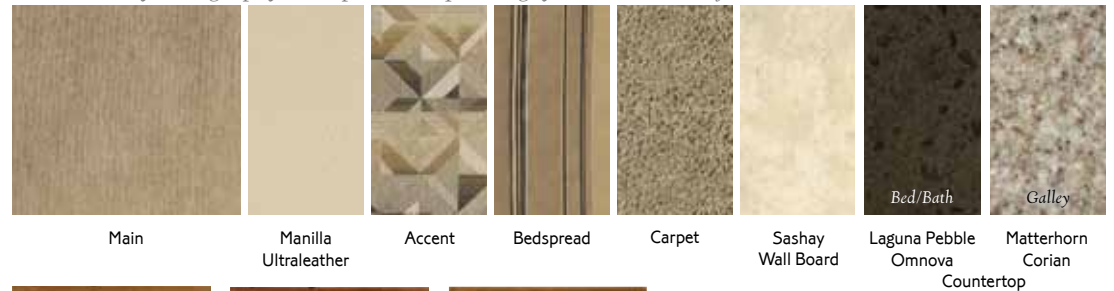
**Smoke Screen** *Dramatic mix of light and dark harmonize in this rich, modern color combination*



**Harvest** *Warm and inviting textures evoke imagery of Midwestern fields at harvest*



**Plateau** *Airy and light play on taupe hints at quilt imagery in this traditional fabric collection*



Honey Cherry

Forest Cherry

Coffee-Glazed  
Vienna Maple

Fabrics and carpets may change without notice or obligation.

DON'T MISS OUT



Caravans, rallies, local and state events, and exclusive RV travel benefits can all be yours as a WIT Club member—and you can meet like-minded folks that possess the same enthusiasm for traveling this great nation of ours. It's a wonderful way to make your Sunova a way of life. Learn more about the Winnebago-Itasca Travelers Club at [WITclub.com](http://WITclub.com).

Members enjoy:

- Caravans and Rallies
- Local and State Group Activities
- RV Travel Benefits



Four simple questions to ask *before* you buy.

visit [BetterBuiltRVs.com](http://BetterBuiltRVs.com)

## COMMITTED TO SERVICE

We back our motor homes with best-in-class support both before and after the sale:



**TRIP Saver**  
EAST TRACK PARTS

- 12-month/ 15,000-mile basic limited warranty
- 36-month/36,000-mile limited warranty on structure
- 10-year standard limited parts-and-labor roof skin warranty
- Complimentary 24-hour roadside assistance program
  - RV Technical Assistance Hotline
  - RV Service Appointment Assistance
  - Emergency Trip Interruption
  - Emergency Message Service
  - Nationwide Trip Routing
  - Fee-Free Travelers Cheques
- TripSaver Fast Track Parts guarantees that in-stock warranty parts ship directly to your dealer within 24 hours
- National dealer service network



NYSE: WGO

[Goltasca.com](http://Goltasca.com)

THE MOST RECOGNIZED NAME IN MOTOR HOMES\*



For Sales and Service Information Contact: