

# LANDMARK

*Full Time  
Residential Luxury*



**Warranty** for Full Time RVing

# LANDMARK

## LANDMARK, not just a name:

Eight years ago Heartland, a small start-up company at the time, set out to develop the best luxury fifth wheel with the best features at the best price. Today LANDMARK is Heartland's flagship fifth wheel and the full-timer's choice for residential luxury and value. LANDMARK has a reputation of designs that inspire, construction that endures and the best value for full time RVing. That's why our customers have made Heartland the third largest retailing fifth wheel manufacture in the world in less then eight years.

Heartland really listens to the needs of full timers like yourself leading to our introduction of the Yeti Extreme Weather package and the Full-Timer package. Innovations like these are why Landmark has been featured in so many major RV magazines over the years like Trailer Life or RV Lifestyles to name a couple and how Heartland protects your investment with one of the highest resell values in its class.

Hundreds of Landmark owners travel the nation year round with the Heartland Owners club and the word around the campfire is very convincing that LANDMARK is the ultimate value in Full Time Residential Luxury.

The next time you hear the name LANDMARK you will know they are referring to the ultimate value in Full Time Residential Luxury.

Sincerely

The Landmark Team...





*Full Time  
Residential Luxury*





Entertain family and friends in full surround sound, with our AM/FM CD/DVD MP3

player featuring wireless link technology allowing control from your Bluetooth enabled smart phone, the ability to stream music from your smart phone and even place or receive calls through the system.



Each luxury LANDMARK features Amish-crafted hardwood glazed pecan interiors including custom molding and real wood window trim. You'll appreciate LANDMARK's attention to detail, from upgraded furniture and decorative glass to pendant light fixtures and solid surface countertops. Storage abounds, from the residential style pantry and oversized pot and pan drawers to hidden storage drawers in the steps and enormous basement compartments.



# LANDMARK



Key Largo



San Antonio







Massive, 18 Cubic Foot, finished Under Bed Storage with gas strut lifters for easy access.

*Exclusively Engineered & Built for HEARTLAND*

- 3½" Memory foam Pillow top construction
- 5 Year Warranty
- 12" tall mattress profile
- Fits standard sheet sets
- No Flip Design



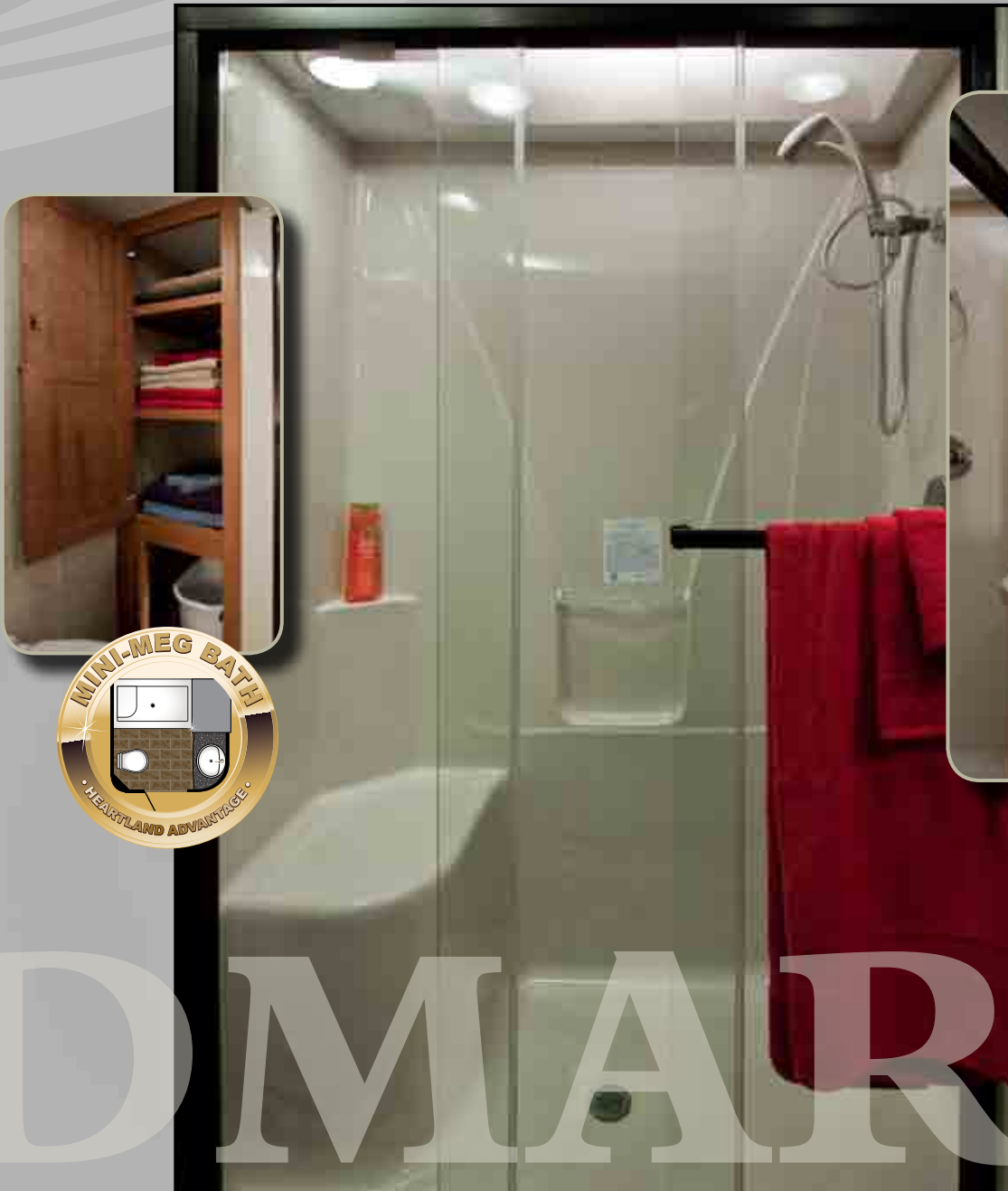
**KING  
BED**



HEARTLAND

Every LANDMARK bedroom is a full-timers luxury retreat. Our custom pillow top mattress allows for long restful evenings while enjoying your favorite programs on your 32" bedroom HD LCD TV. LANDMARK'S 32" deep bedroom slides accommodate King beds and provide the most walk around room in its class. Storage possibilities abound in LANDMARK'S bedroom suites including a stackable washer/dryer closet, walk in closet, tall dresser with deep drawers and colossal under-bed storage to hold everything a full-timer needs for that extended vacation.

Like having your own personal spa with an integrated seat, grab handle and flexible Oxygenics shower head. Our new one piece fiberglass mini-meg shower (50% larger than the industry standard neo-angle shower) focuses on comfort and safety.



# LANDMARK





LANDMARK kitchens are designed with you in mind. A harmonious balance of food and equipment storage, preparation area equipped with name brand appliances integrated with large solid surface countertops, deep residential stainless steel sink with flexible sprayer faucet and large usable clean-up area. This combination offers the most sensible, residential kitchens available in a luxury fifth wheel.







# LANDMARK

Exquisite interiors are the hallmark of the LANDMARK series of flagship, luxury fifth wheels by Heartland RV, and this San Antonio design is one of the best ever. You'll love LANDMARK kitchen's extraordinary storage and countertop space – featuring all hardwood cabinetry with detailed raised panels and pencil edge solid-surface counter tops. The appliances feature matching hardwood fronts, while the custom hanging pendant fixtures overhead lend to

the coach's true residential look and feel.

Whether you're preparing meals or hosting guests, this LANDMARK is sure to impress with its stunning looks and spacious design. The layout of this model allows for a full wall pantry next to the optional 4-door refrigerator, 82 inch sofa and theater seating opposite the entertainment center featuring a 42" HD LCD TV, custom built-in fireplace and home office work station in the rear living area.



*Full Time  
Residential Luxury*





San Antonio



Choose the optional 4-door refrigerator offering 12 cu.ft. of food storage space.



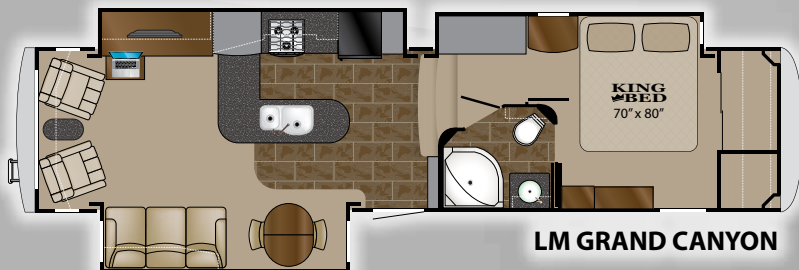
Vinyl Graphics  
Standard

Partial Body Paint  
Option

Tan Full Body  
Paint Option

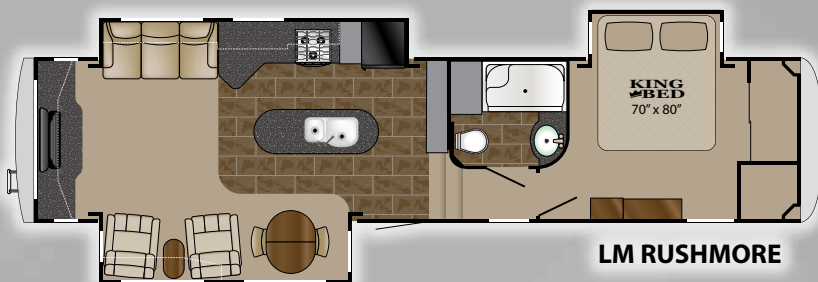
Chocolate Full Body  
Paint Option

Length: 37' 7"  
Dry: 12,629  
GVWR: 16,200  
Hitch: 2,295  
Height: 12' 11½"



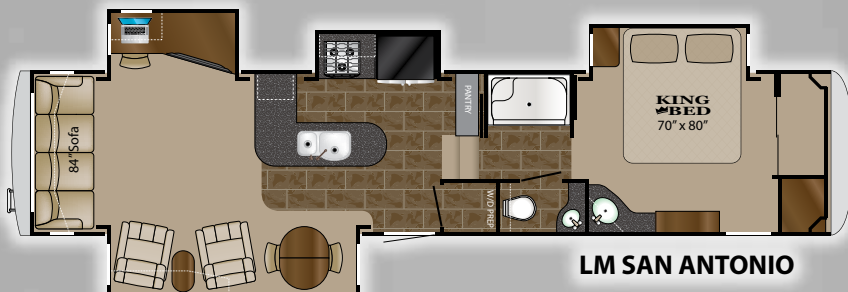
LM GRAND CANYON

Length: 39' 5"  
Dry: 12,850  
GVWR: 16,250  
Hitch: 2,700  
Height: 12' 11½"



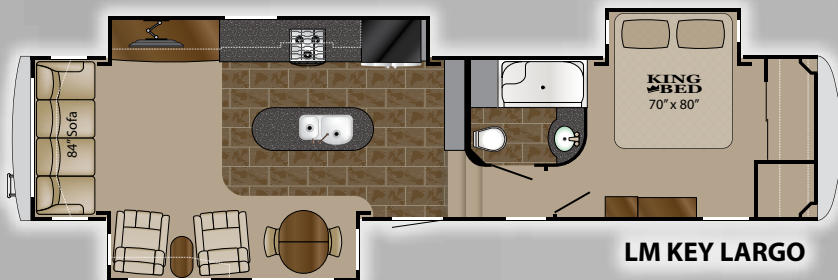
LM RUSHMORE

Length: 40' 11"  
Dry: 13,488  
GVWR: 16,250  
Hitch: 2,860  
Height: 12' 11½"



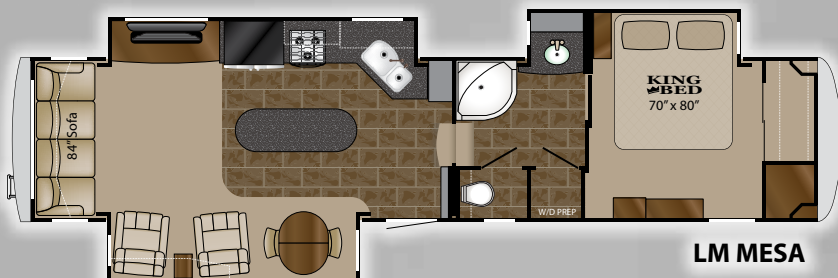
LM SAN ANTONIO

Length: 40' 6"  
Dry: 12,972  
GVWR: 16,250  
Hitch: 2,460  
Height: 12' 11½"



LM KEY LARGO

Length: 39' 10"  
Dry: 12,922  
GVWR: 16,250  
Hitch: 2,520  
Height: 12' 11½"



LM MESA

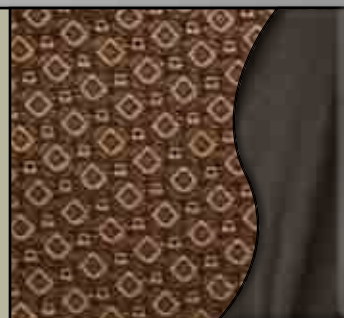
French Roast



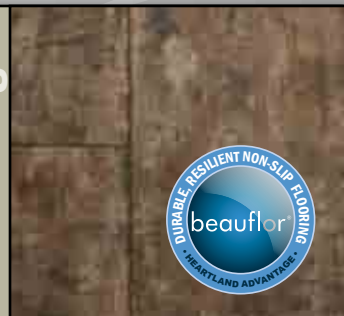
Bistro



Cafe Mocha



Flooring





## INTERIOR

- Pull Out Storage Drawer in Steps
- Three Decors to Choose From
- Amish-Crafted Natural All-Hardwood Cabinet Stiles, Doors and Drawers with Antique Hand Rubbed Glazed Pecan
- Hardwood Window Surrounds
- Hidden Cabinet Hinges
- All Cabinet Frames are Pre-Drilled, and Screwed Together - not stapled
- Baltic Birch Drawer Construction (Real Wood)
- Deluxe Ball-Bearing, Full Extension Drawer Guides with Drawer Catches
- Custom Crafted Wardrobe- French Style Mirrored Doors with Cedar Lined Built-In Storage Rack
- 32" Deep Bedroom Slide Rooms featuring one of the largest bedrooms available (N/A on Grand Canyon)
- Custom Crafted Dresser with Overhead Cabinets
- Washer/Dryer Prep – with Closet for a Stackable Washer/Dryer
- Numerous Hardwood Drawers and Doors provide Unmatched Storage
- 6'-4" Bedroom Ceiling Height Throughout
- Colossal 18 Cubic Foot Under-Bed Storage
- Deluxe Memory Foam Pillow Top King Size Bed with Pillow Package
- Two Windows in Bedroom for Cross Breeze (N/A in Grand Canyon)
- 2 Stereo Speakers in Bedroom
- Deluxe Headboard Design
- Welcome Back Light

## EXTERIOR

- High Gloss Laminated Fiberglass Sidewalls
- Double-Welded Aircraft Quality Aluminum SUPERSTRUCTURE Cage Construction Both 1.5" and 3" Tubular Design
- Deluxe Electric Awning
- Drip Rail with Down Spouts
- Frameless, Tinted Safety Glass Windows with UV Inhibitor
- Ventilation Slider Side Windows
- Properly Placed Torque Louvered Windows.
- Running Lights & Exterior Lights
- Entrance Step Light - Under Steps
- Amber Porch Light Above Entrance Door
- Automotive/Aerodynamic Styled Rear Cap
- Recessed Tail Lights
- Engineered Molded Wind Deflection Fins
- Dent-Resistant Material
- Rear Ladder for Easy Roof Access
- Exterior Entertainment Center Prep
- One-Piece Seamless EPDM Rubber Roof
- 12" I-Beam Frame with Rust Prohibitive Coating
- Hydraulic Landing Gear (14X Faster than Electric)
- Out Board Landing Legs Placement
- Spring Loaded Snap Pins
- Heavy Duty Electric Rear Stabilizer Jacks
- Heavy-Duty Load Range G 16" Goodyear Tires
- Deluxe 16" Aluminum Rims
- Recessed 16" Steel Rim Spare Tire
- E-Z Flex Rubber Dampening Suspension by Dexter
- 7,000 lb. Dexter Axles with E-Z Lube™ Hubs
- Four Heavy Duty Shock Absorbers
- 2 x 12" Nev-R-Adjust Brakes By Dexter
- Monogrammed Fender Skirts
- 2 x 40# LP Bottles
- Standard Exterior Fade-Resistant UV Protected Vinyl Graphics

## UNDERBELLY

- Seamless Corrugated Underbelly Material
- Heated and Enclosed Underbelly
- Heated and Insulated Holding Tanks & Gate Valves
- Dual Insulation System (Flexfoil R-14 and a Formaldehyde Free Blanket of R-14)

## PLUMBING

- Color-Coded Water Lines with Limited Warranty
- 5.7 Shurflo Extreme™ Water Pump
- Quick & Easy Winterization System in U.D.C.

## POWER

- Upgraded 80 AMP/12V DC Converter
- 50 Amp Marine Cord with Electric Power Cord Reel
- Dual Battery Box - One 12V Battery (room for two)
- Convenient Battery Shut-Off Switch
- 110V Exterior Electrical Receptacles

## HEATING

- Seamless One Piece In-Floor Heat Duct

- 42,000 BTU Furnace
- Heated Stool Room (Most Models)

## COOLING

- Whisper Quiet Air Conditioner System
- 15,000 BTU Air Conditioner in Living Room
- 13,500 BTU Air Conditioner in Bedroom
- Rain Sensor Fantastic™ Fan Thermostat in Kitchen (Moves 1,000 cu. ft. of air per minute)
- Air Conditioned Stool Room (most models)

## TOTAL INSULATION VALUES

- Walls - R9 Insulation
- Roof - R30 Insulation
- Floor System - R38 Insulation
- Slide Room Floors - Radiant Technology R38 equivalent

## SLIDE ROOM

- 6'-5" Ceiling Height in Main Slide
- Decorative Slide-Out Fascias
- Hydraulic Operating System w/Independent Switches
- Double Bulb/Double Squeegee Seals with One-Piece Weather-proof Floor Pan
- Cabinets Above Sofa
- Hydraulic Manual Override System

## INTERIOR STANDARDS

- Deluxe Upholstery Fabrics
- Air Mattress Hide-a-Bed Sofa
- Deluxe Pillow & Bedspread Package
- Deluxe Decorative Border on Walls
- Support Struts on Overheads
- 4" Recessed Halogen Lighting Package

## ENTERTAINMENT & CONNECTIONS

- 40" LCD TV
- Home Theater Surround Sound System (2 Speakers in Bedroom)
- Cable/Satellite TV Hookups in Bedroom and Exterior Storage Compartment
- Pre-wired for Winegard Trav'ler Satellite System
- Large Computer Desk/Work Station (most models)
- Decorative Glass Door Inserts
- Linc Multipurpose Remote System

## LIVING ROOM

- Decorative Glass Inserts in Select Overhead Cabinet Doors
- Upgraded Ultra Leather Recliners (2)
- Ultra Leather Hide-a-Bed Sofa with Air Mattress
- Wrought Iron Sofa Table
- 110V Ceiling Fan

## APPLIANCES AND LIGHTING

- 8 Cu.Ft Refrigerator with Raised Wood Fronts
- 3-Burner Cook Top with Under Storage Cabinet
- Matching Solid Surface Cook Top Covers
- Over the Range 30" Convection Microwave Oven
- 12 Gal. Gas/Electric DSI W.H.
- MIRRORED CLOSET AT ENTRY (Most Models)
- Light Switches
- Coat Hooks
- Key Hooks
- Water Heater DSI Switch
- Full System Monitoring Panel

## FOR YOUR PROTECTION

- Fire Extinguisher by Entry Door
- Smoke Detector
- LP Gas Detector
- CO2 Detector
- Guide Light Under Entry Step
- Exterior Security Flood Lights
- Break Away Switch
- Deadbolt Lock on Entrance Door
- 120V GFI Protected Outlets
- Fire Escape Windows
- 12V Hitch Light

## KITCHEN

- True Solid Surface Countertops with Pencil Edge
- Residential, All-Hardwood Cabinets with Hidden Hinges
- Backsplash Behind Oven
- Rubbed Bronze Fixtures
- BeauFlor Resilient Flooring
- Deep Double Bowl Residential Stainless Steel Sink

- Boutique Pull Out Sprayer Faucet
- Solid-Surface Sink Covers
- Deep Residential Size Drawers
- Deluxe Ball-Bearing, Full Extension Drawer Guides
- Pots/Pans Storage Cabinet
- Custom Crafted Dinette Table, 2 Stationary & 2 Foldable Chairs with Storage in both the Table and Chairs
- Large, Deep Pantry (N/A with 4 Door Refer)
- Fantastic Fan with Rain Sensor

## BATH AREA

- One Level Floor for the Entire Suite
- 6'-4" Bath/Bed Ceiling Height
- BeauFlor Flooring
- 110V Outlets Conveniently Located
- Linen Cabinet Storage
- True Solid-Surface Countertop with Pencil Edge
- Large Mirrored Medicine Cabinet
- Under mount Sink with solid surface Sink Cover

## COMMODOE ROOM

- Power Roof Ventilation
- Dual 12V Lights with Soft Lighting Lenses
- Real China Commode with Foot Flush
- Extra Wide Recessed Storage Cabinet with Door
- 110V Outlet for Bathroom Night Light
- Heat Duct and Air Conditioning Duct in the Commode Room (Most Models)

## SHOWER

- Residential One-Piece Radius Fiberglass Shower with Decorative Glass Door (Floor plan Specific)
- Mini-Meg Shower with Residential Style Shower Door (Floor Plan specific)
- Oxygenics Shower Head
- Radius Domed Skylight
- 12V Water Proof Shower Light

## OPTIONS

### EXTERIOR

- Moryde™ Pin Box
- Generator Prep
- 5.5KW Onan LP Generator
- Slide Awnings
- ABS Hitch Cover
- ½ Body Paint with Fade-Resistant UV Protected Vinyl Graphics
- Two Full Body Paint Custom Painted Exterior Graphic Options
- 1 Touch, 6 Point Hydraulic Auto Leveling System
- Outdoor Entertainment Center w/ 32" TV, Stereo/DVD and Speakers

### INTERIOR

- 32" LCD Flat Screen TV for Bedroom
- Theater Seating
- Recliner and/or Sofa Option Available (ask dealer)

### APPLIANCES

- Electric Fireplace
- Stackable Washer/Dryer
- Queen Bed IPO King Bed
- Elite 4-Door Refrigerator Option with Ice Maker
- 8 Cu. Ft. Refrigerator w/Ice Maker
- Three Burner Cook Top with Oven (ask dealer)

### HEATING & COOLING

- Fantastic Fan in Bathroom w/Rain Sensor
- Dual Pane Windows with UV Protect. Tint
- Heat pumps Available
- Wireless Back up Camera w/ Monitor

### Yeti Extreme Weather Package

- The Ultimate for Cold Weather Survival
- Heated Tank Pads
- Radiant Technology Insulation in Front and Rear Caps
- Heated Main Water Line- Low Volt Polymer Heating Cable

### Full-Timer Package (Generator Prep Required)

- Tire Pressure Monitoring System
- Complete Coach Surge Protector
- Bike Rack Receiver Hitch

# Reasons To Buy...

For a complete tour of features, benefits and reasons to buy a Landmark fifth wheel ask your dealer about the Reasons to buy book or view it online at [www.heartlandrvs.com](http://www.heartlandrvs.com).



One Touch Four Point Hydraulic Auto Leveling System option. Spend more time relaxing and less time leveling your coach. The Auto Level function will level your coach in less than 30 seconds!



- ✓ **Laminated Floor R-32**
- ✓ **Heated, Enclosed & Insulated Underbelly**
- ✓ **Laminated SideWalls R-9**
- ✓ **Laminated Roof R-30**
- ✓ **Radiant Technology Insulated Caps R-38**
- ✓ **Insulated Slide Room Floor R-38**
- ✓ **Laminated, Insulated Bath & Bedroom Deck**
- ✓ **Pex Plumbing - Tested to -40°C / °F**
- ✓ **Dual Pane Window Option**



Rear Electric Stabilizers make six points of contact with the ground adding to the overall stability.



Rear jacks are located directly behind the axles to support the load where the load should be.

Heavy duty Aluminum, Hydraulic Jacks don't rust and extend quickly



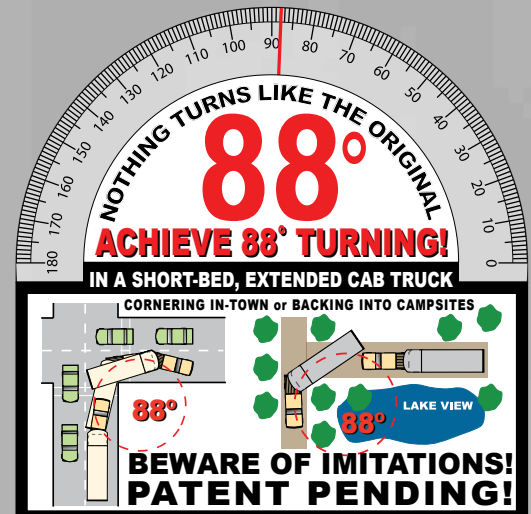
R38 Radiant Technology Insulation  
110 Volt holding tank heating pads  
Insulated Main water line and  
12V auto sensing heater line



## Perfect for Short-Bed, Extended-Cab Trucks

### FRONT CAP DESIGN

The fiberglass front cap for the LANDMARK is all new with sleek radiuses and design lines flowing through it. The Patented turning radius design is perfect for short-bed, extended-cab trucks!





# YOUR LAMINATED WORLD...

**Strength,  
Durability  
& Comfort  
BEYOND  
COMPARE!**



The combination of these three systems bring you the Strongest and Lightest construction available while also providing unparalleled noise reduction, thermal insulation and durability. Protecting your investment is important to HEARTLAND. Laminated construction provides that protection in addition to offering peace of mind that you will be spending more time enjoying your family and travels than worrying about repairing your RV.

**BEST-IN-CLASS**

- INSULATION - R VALUE
- NOISE REDUCTION
- DURABILITY
- STRENGTH
- LOOKS

5"

- RUBBER SKIN
- WOOD DECKING
- BLOCK FOAM INSULATION
- ALUMINUM RIBS & PERIMETER
- DECORATIVE, TEXTURED COILING VINYL

**5 INCHES - FIVE LAYERS**

**Strength, Durability & Comfort BEYOND COMPARE!**

SOUND BARRIER	THERMAL EFFICIENT	SUPER STRENGTH
		COMPETITION

## LAMINATED ROOF SYSTEM

## LAMINATED WALL SYSTEM

## LAMINATED FLOOR

**HEARTLAND**

**2" THICK  
SIDEWALLS!**

**Lightweight  
ALUMINUM**

Just an 1/8" thick foam cup protects your hand from scalding hot coffee... imagine what nearly 2" of block foam does for your Laminated Heartland Sidewall!

Double Welded, Fully Laminated Sidewall Construction

HEARTLAND's LAMINATED Floor System is one of the **STRONGEST FLOORS** in the industry! Featuring sturdy 2.5" Aluminum Framing, thick Block Foam Insulation, One-Piece Seamless Decking and a Thermo-Board Luan. All Laminated for Maximum Strength and R Value - virtually eliminating floor flex!

**OUR LAMINATED Floor Construction** easily supported over 1,800 lbs. of Water Jugs in one spot - resulting in less than 1/4" of flex!!

# LANDMARK



Heartland Recreational Vehicles  
1001 All-Pro Drive • Elkhart, IN 46514 • 574-262-5992

## Community. Convenience. Close-to-home.

Where you purchase your recreational vehicle is ultimately your decision but Heartland urges you to consider buying at your local dealer. Dealers are part of your community, providing jobs and contributing to your local economy. These dealers are under obligation to provide warranty service for products they sell, but are not legally required to service products purchased from other dealers. At some point, you may need to return to the dealer you buy from - why not stay close to home? After all, home is where your Heartland is!

## BENEFITS OF PURCHASING YOUR RV LOCALLY:

- You enjoy valuable relationship building with Dealer Representatives, close to your home, who will explain the features and benefits of the product.
- You receive a full product orientation prior to delivery, which includes hands-on directions for many of the coach's systems and functions. You are also introduced to the Dealership's Service/Parts/Warranty personnel who are at the ready to help you with any issues you may encounter, now and in the future.
- You enjoy customer **PRIORITY**. Dealerships generally service their purchasing customers first - others may experience long delays and miss opportunities to use their RV. What is it worth for you to have a dealership's full attention and motivation to satisfy you when you need service - in a timely manner?
- Valuable **TAX** dollars and jobs stay in **YOUR** community which pays for your roads, schools, police and fire departments.

## DON'T UNDERESTIMATE CUSTOMER SERVICE AND PERSONAL CARE!

For Canadian Residents: If you purchase an RV out-of-country, there are additional fees, taxes and inspections that must be met before bringing your product home. Your local Canadian dealers are experts in these provisions.

Visit HEARTLAND on:



Your Authorized Heartland Dealer:

[www.HEARTLANDRVs.com](http://www.HEARTLANDRVs.com)



### Experience:

Product Walk-Through Videos  
Side By Side Comparisons  
Feature Videos • Photo Galleries  
Virtual 360° Tours  
Detailed Floor Plans  
News • Testimonials  
Dealer Locator • Owners Club  
Customer Service • Service Locator  
and More at our Informative Web Site



VENDOR DIRECT 800#	
CALL DIRECT FOR DIRECT RESULTS! TOLL FREE & WARRANTY PHONE NUMBERS	
LYPSTAY	1-800-624-7821
DEXTER ALEX	1-874-295-7888
DOMESTIC	1-800-644-4881
NORCO	1-800-347-2222
SHOREFLOW	1-800-854-3218
THETFORD	1-800-643-1219
KIB	1-800-230-7851
TREDIT TIRE	1-866-443-8987
A.S.A.	1-800-688-3135
PROGRESSIVE	1-268-781-4241
CHENG	1-877-294-8987
ATWOOD	1-866-889-3118
SWAN	1-800-229-7926
B.B.	1-874-239-7926
FLAIR	1-874-634-1163
SEAT TECH	1-888-624-7821
ONAN	1-800-888-6626
IMPLEX	1-800-668-6663
BAUER	1-877-481-4788
CAREFREE	1-800-622-3238
USA	1-800-439-6694
WINDY POOL	1-800-545-9088
MAYTAG	1-800-543-1219
NORCOLD	1-800-543-1219

## Call Direct, Fast Results! 800# LABEL IN EVERY HEARTLAND

We provide a convenient sticker in each coach listing the warranty phone numbers of our most common vendor partners so that if you choose to, you may work directly with them to more quickly resolve issues or obtain replacement items.



## HEARTLAND CUSTOMER SERVICE WE'VE GOT YOUR BACK!

Over 40 men and women located in a dedicated facility servicing our customers every day. With a dealer network of over 400 locations across the U.S. and Canada, you're never far from an authorized Heartland dealer.

Product information is as accurate as possible as of the date of publication of this brochure. Due to Heartland's commitment to continuous product improvement - floorplans, materials, components, features, specifications, options, etc. are subject to change without notice or obligation to Heartland Recreational Vehicles. Product information and specifications apply to coaches beginning with serial number 242494.  
**Tow Vehicle Caution:** Owners of Heartland recreational vehicles are solely responsible for the selection and proper use of tow vehicles. All customers should consult with a motor vehicle manufacturer or their dealer concerning the purchase and use of suitable tow vehicles for Heartland products. Heartland disclaims any liability or damages suffered as a result of the selection, operation, use or misuse of a tow vehicle. Heartland's limited warranty does not cover damage to the recreational vehicle or the tow vehicle as a result of the selection of the tow vehicle.  
See your nearest Heartland dealer to review a current model.