



SUPERIOR CONSTRUCTION | SUPREME LUXURY



FIFTH WHEELS  
TRAVEL TRAILERS

VOL. XI





## SABRE | MODEL 34 REQ5

Our new model features Coffee décor w/optional La-Z-Boy® recliners, solid surface countertops by LG®, recessed spice rack, fireplace, air mattress hide-a-bed, free-standing dinette and ceiling fan. We've also added in-ceiling, pendant and soffit lighting and hardwood stair treads to enhance the beauty of your new coach.









## SABRE | MODEL 34 REQs

Shown in Coffee décor shows off the wide open expanse of this quad-slide rear entertainment model. Our new lighting includes recessed in-ceiling, pendant and soffit lights that reflect the true beauty of the optional solid surface countertops by LG®, solid hardwood cabinetry, a 32" Toshiba® retractable TV w/residential style cabinet feet and optional Beauflor® plank wood flooring.



# WIDE OPEN SPACE

The 29 CKDS shown in Desert Sand dècor has a wide open style designed for comfortable carefree living. Large picture windows bring in the beauty of the outside world while residential features create the comforts of home. This model has two-toned ceilings, optional free standing dinette w/leaf extension and storage, a curved stairway w/hardwood treads leading to the bathroom and master suite. Note the beautiful glass door w/pull down shade for your privacy.



**SABRE | MODEL 29 CKDS**



Residential Wood Front Refrigerator



22" Oven & Full Extension Drawers



Bathroom w/Neo-angle Shower and under mounted Stonecast sink.



Opt. Solid Surface Countertops/Sink Lids by LG® w/backsplash, spice rack and pull-out sprayer.





**EXTERIOR KITCHENS  
AVAILABLE ON SOME MODELS**

The 29 CKDS is a real step-saver. A host of special features make it attractively efficient. They include the pull-out faucet with sprayer, food grade sink cover that doubles as a cutting board, name brand appliances and curved residential size overhead cabinets with soffit lighting make this a beautiful place for meal preparation. An electronic entertainment center is also provided for the pleasure of your guests and family.





**UNDER BED  
STORAGE ›**

Our new 29 CKDS bedroom shown in Desert Sand dècor and features a modern oak headboard, a full residential sized queen bed and an oak footboard that has pull-out drawers for ease of underbed storage. We also feature a curved bedroom wall, glass door and curved stairway with hardwood treads leading to the main living area.



## SABRE | MODEL 34 REQ5

Shown in Coffee dècor featuring convenient swivel reading lights.







## AN ATTITUDE OF COMFORT

The Sabre is all about comfort and nowhere is that attitude more evident than in the bedroom. A queen size pillow top innerspring mattress ensures sleeping comfort. There's storage galore w/a handsome residential dresser, large sliding wardrobe w/shoe shelf, wardrobe cabinet, and extra overhead storage cabinets. This model features a curved stairwell that leads to the bedroom and spacious bathroom complete w/home-like fixtures such as a residential size 50" x 30" shower w/built-in seat and includes a three piece glass door and large 25" x 40" skylight. Our bathroom is complete w/the large under mounted Stonecast sink.





## SABRE | DÉCOR OPTIONS

Choosing Sabre was easy, now you can make it your own. Choose the designer décor that fits your taste.

NUTMEG

COFFEE

DESERT SAND

TAUPE

CARMEL

PESTO



**3 YEAR  
LIMITED WARRANTY**  
Standard on all  
hardwood cabinet  
doors.



Your Sabre comes with residential Shaw® nylon carpet with R2X® – the industry's most innovative carpet stain and soil repelling system.



# SABRE | STANDARDS & OPTIONS

<b>KITCHEN</b>	Large 8 cubic foot Dometic® refrigerator	SF
	Raised hardwood front refrigerator panels	SF
	Residential-style, self-edged countertop	S
	Residential American Stonecast sink, under-mount: w/stands 450 degrees	S
	Pull-out faucet w/sprayer	S
	Food grade sink cover & cutting board	S
	Full extension drawers	S
	Ball bearing roller guides	S
	Residential-size overhead cabinets	S
	Magic Chef® microwave	S
	Range cover	S
	22" Oven	S
	Installed conveniences: spice rack, knife holder and silverware drawer	S
	Residential size trash can	S
	Residential size pantry	S
	110v outlets mounted in dinette and sofa area for convenience	S
	Aluminum framed dinette bases w/plywood seat bases	S
	Solid surface galley countertop by LG® (FW only)	0
	Solid surface galley extension by LG® (FW only)	0
	Free standing dinette w/leaf extension and flip up storage (chairs include seat storage)	0

<b>BATHROOM</b>	12" Fantastic, 3 speed, high capacity fan	SF
	Sky dome over shower	S
	34" neo-angle shower w/glass enclosure and integrated towel bar (most models)	S
	36" neo-angle shower w/glass enclosure and integrated towel bar (34 RLQS only)	S
	50" x 30" Residential shower w/built-in seat (W/A)	S
	Waterproof shower light	S
	Removable, mildew resistant shower organizer	S
	Residential American Stonecast sink, under-mount: w/stands 450 degrees	S
	Sink cover	S
	Residential-style, wood medicine cabinet	S
	Porcelain toilet w/foot flush and "power flush jets"	S
Installed conveniences: towel ring, soap dish and toothbrush holder	S	

Heat vent in ALL bathrooms	S
Air conditioning vent in ALL bathrooms	S

<b>BEDROOM</b>	Quilted bedspread w/(2) pillow shams	S
	Residential sized chest of drawers w/ball bearing guides	S
	Prewired for bedroom TV	S
	Deluxe pillow top 60" x 80" queen innerspring mattress	S
	Bedside night stand shelves (most floorplans)	S
	Convenient 110v outlet by each night stand	S
	Dual reading lights over bed	S
	"Shoe shelf" in front wardrobe	S
	Pull-out drawer under bed storage (most models)	S
	HD LCD TV (TT)	S
HD LCD TV (FW)	0	

<b>AUDIO &amp; VIDEO</b>	32" HD LCD TV, living room	SF
	Digital TV antenna w/amplifier booster	HF
	Learning remote capable of controlling TV, cable	HF
	200 watt CD/DVD/AM/FM player w/5.1 surround sound (12v for dry camping)	HF
	True five speaker surround sound system w/subwoofer	HF
	Stereo includes weather band	HF
	Stereo inputs include: 3.5 mm audio, SD card and USB	HF
	(2) Bedroom speakers	HF
	(2) Marine grade exterior patio speakers	HF
	Antenna/cable hook-up w/110v and 12v outlets in pass through compartment	HF
	Audio & video input panel for accessories	HF
	RG-6 satellite prep	S
	Satellite and cable hook-up	S
Exterior antenna for AM/FM radio	S	
Slide-out patio LCD TV (select floorplans)	S	
Swing-down exterior entertainment center	0	

<b>UTILITIES</b>	Whole system water filtration	SF
	35,000 BTU furnace w/automatic ignition	SF
	10 gal. DSI gas/electric water heater w/16.2 gallons per hour quick recovery	SF
	"W/in Reach" water heater bypass valve	S

	Easy siphon winterize valve (FW)	S
	Independent electric slide-outs	S
	Convenience center for hook-ups (includes hot & cold exterior shower) (FW)	S
	High capacity in-floor heat ducting	S
	13,500 BTU air conditioner w/Quick Cool dump	S
	Digital thermostat	S
	65 amp power converter w/smart fan cooling	S
	30 amp service w/detachable marine power cord	S
	Command center w/tank monitor enclosed in cabinet (most floorplans)	S
	Black tank flush	S
	12 gal. DSI gas/electric water heater	0
15,000 BTU air conditioner w/Quick Cool	0	
50 amp service w/2nd air conditioner ready w/detachable marine power cord	0	

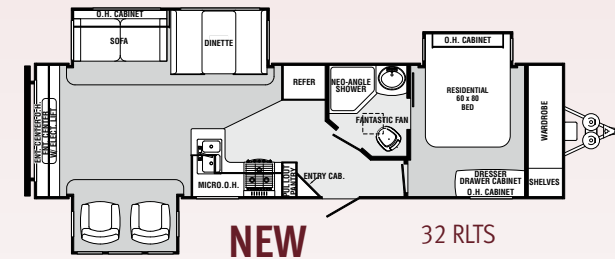
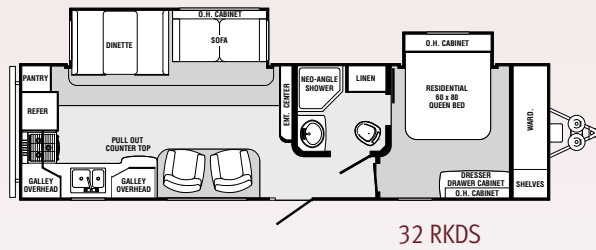
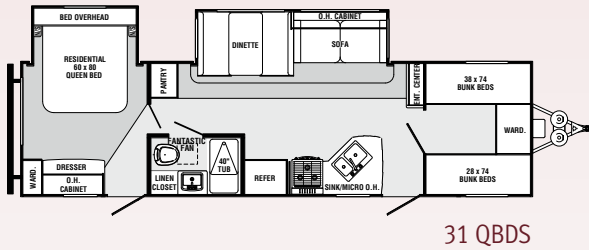
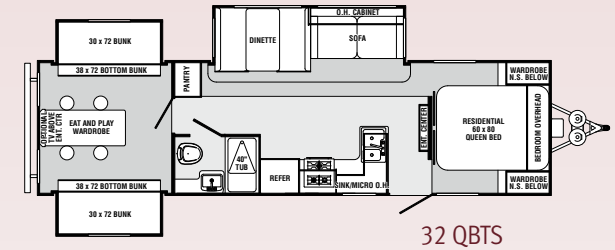
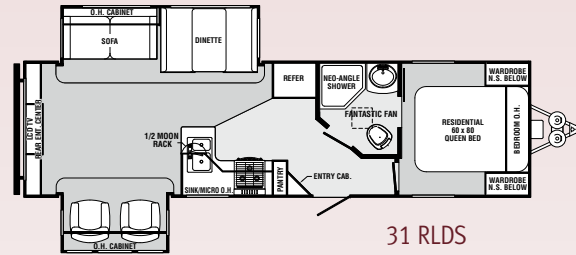
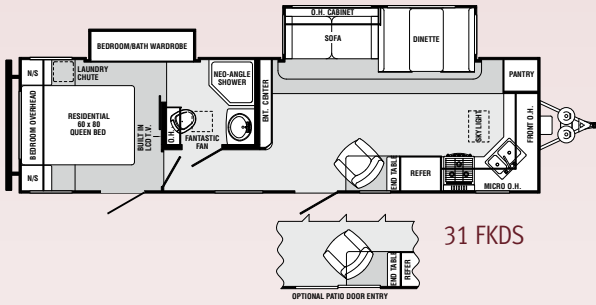
<b>EXTERIOR</b>	Hi-Gloss gel coated fiberglass including compartment doors	SC
	6-sided welded aluminum structure; sidewalls, rear wall, front wall, floor, roof, slide-outs	SC
	Attic vents for roof ventilation	S
	Heated and enclosed underbelly	SC
	Concealed spare tire (FW)	SF
	Under-mounted spare tire (TT)	SF
	Aerodynamic fiberglass front cap w/LED docking lights	S
	Slam-latch luggage doors, (2 main doors)	S
	Full aluminum radius wrap on lower walls	S
	Quick release snap jack pins mounted forward	S
	Rear roof ladder	S
	A&E electric awning w/adjustable arms	S
	(2) Patio safety lights	S
	Security step light at main entrance	S
	Nitrous filled steel belted radial tires w/roadside assistance	S
	Axles w/Super Lube® bearing system	S
	Electric powered front jacks (FW)	S
Deep tint safety glass windows	S	
30" entry door (most floorplans)	S	
Oversized fold away entry door handle	S	
Switchable interior light at each luggage door	S	
Outside LP gas hook-up w/quick connect	S	

	Crank-down stabilizer jacks	S
	Flexible 4" rain spouts	S
	Trail Air® Equa-Flex™ suspension	0
	15" Sumec® aluminum wheels	0
	Flip-down bike/utility rack w/450 lb. capacity	0
	16" E-rated, 8 lug Sumec® aluminum wheels w/6000 lb. axles (FW)	0
	Electric stabilizer jacks	0
	Electric tongue jack (TT)	0

<b>INTERIOR</b>	Recessed in-ceiling lighting	S
	Top cabinet doors: solid hardwood, mortise and tenon w/arched raised panels	S
	Lower cabinet doors: solid hardwood, mortise and tenon w/square raised panels	S
	All cabinet doors utilize Teflon spacers to prevent warping, bending and cracking	S
	Cabinet face frames are screwed and not stapled together	S
	Residential Beauflor® linoleum w/7 year cold-crack warranty	S
	Residential Shaw® nylon carpet w/R2X	S
	Carpet pad	S
	Residential ball bearing drawer guides	S
	Flush floor slide rooms in living area w/6'1" interior height	S
	Day/night shades throughout living area	S
	Cell phone charging/organizer station	S
	Swivel rocker chair(s) (per floorplan)	S
	Hardwood step treads to bedroom/bathroom (FW only)	S
	Electric fireplace (FW only, select floorplans)	0
	La-Z-Boy® recliner IPO swivel rocker chair	0
	Euro style recliner IPO swivel rocker chair	0
	Beauflor® linoleum, plank wood pattern w/7 year cold-crack warranty	0
	Ceiling fan (FW only)	0
Upgraded slide-out fascia throughout	0	
Air mattress hide-a-bed sofa w/linen drawer	0	

S = Standard | 0 = Option | SF = Superior Feature Package | SC = Superior Construction Package | HF = High Fidelity Package | FW = Fifth Wheel | TT = Travel Trailers

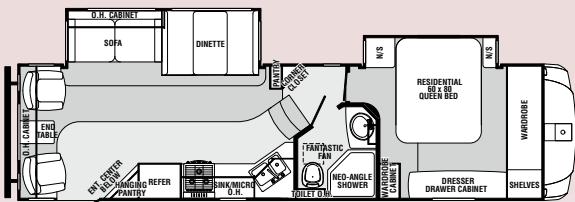




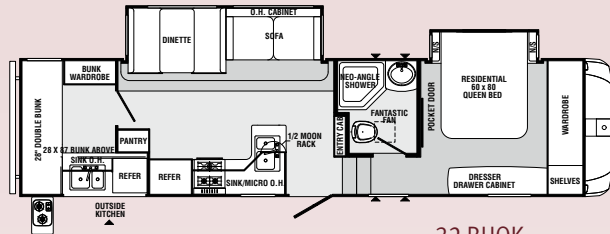
**TRAVEL TRAILERS**

MODEL	31 FKDS	31 QBDS	31 RLDS	32 RKDS	32 QBTS	32 RLTS
Hitch Weight	1,162	1,161	842	1,086	1,105	1,000
Axle Weight	6,764	7,017	7,157	7,107	7,090	7,659
Dry Ship Weight	7,926	8,178	7,999	8,193	8,195	8,659
GVWR	11,322	11,321	11,002	11,246	11,265	11,160
CCC (Cargo Cap.)	3,346	3,093	2,953	3,003	2,586	2,452
Ext. Length	34' 9"	34' 3"	34' 2"	35' 10"	35' 4"	35' 2"
Fresh Water Cap. (gal.)	42	42	42	42	42	42
Black Water Cap. (gal.)	42	42	42	42	42	42
Grey Water Cap. (gal.)	84	84	84	84	84	84
Tire Size (in.)	15"	15"	15"	15"	15"	15"
Awning Size (ft.)	20'	19'	17'	18'	18'	19'

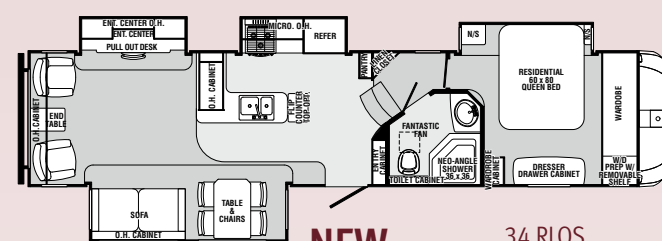




29 CKDS

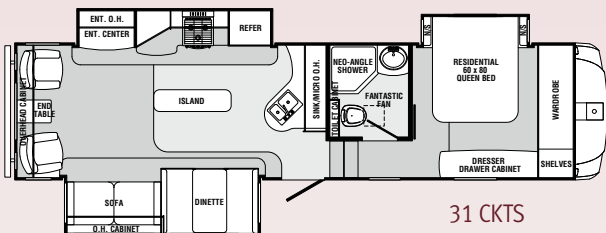


32 BHOK

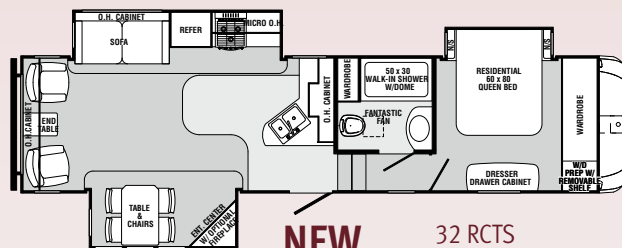


NEW

34 RLQS

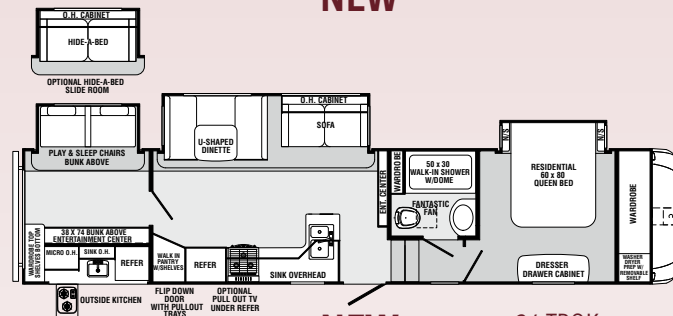


31 CKTS



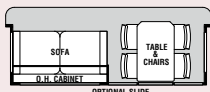
NEW

32 RCTS

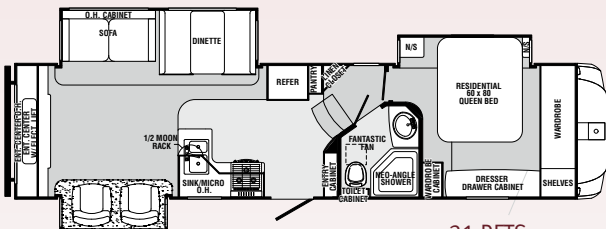


NEW

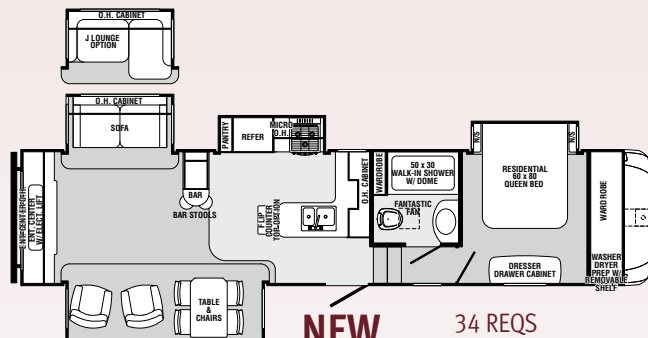
34 TBOK



OPTIONAL SLIDE ROOM

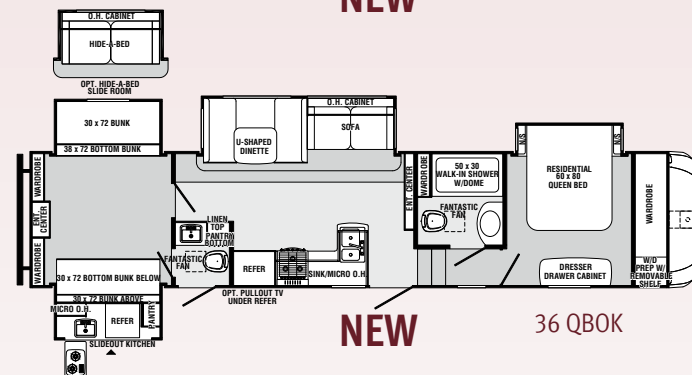


31 RETS



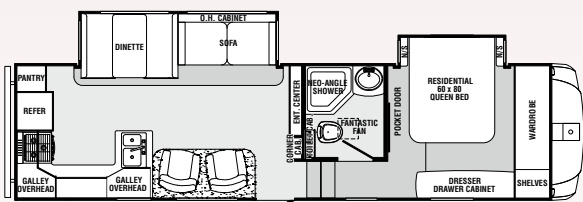
NEW

34 REQS

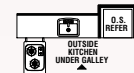


NEW

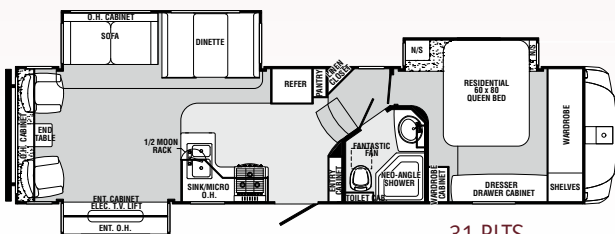
36 QBOK



31 RKOK



OUTSIDE KITCHEN UNDER GALLEY



31 RLTS

**FIFTH WHEELS**

MODEL	29 CKDS	31 CKTS	31 RETS	31 RKOK	31 RLTS	32 BHOK	32 RCTS	34 REQS	34 RLQS	34 TBOK	36 QBOK
Hitch Weight	1,857	1,692	1,688	1,847	1,766	1,872	1,774	1,750	1,944	1,750	TBD
Axle Weight	7,244	7,957	8,092	7,382	8,001	7,700	8,057	8,969	8,658	9,552	TBD
Dry Ship Weight	9,101	9,649	9,780	9,229	9,767	9,572	9,831	10,719	10,652	11,302	TBD
GVWR	12,017	13,092	11,848	12,007	11,926	12,032	13,774	13,750	13,944	13,750	TBD
CCC (Cargo Cap.)	2,866	3,993	2,018	2,728	2,109	2,410	3,893	2,981	3,292	2,398	TBD
Ext. Length	32' 6"	35' 2"	35' 2"	34' 2"	35' 7"	34' 4"	35' 5"	37' 2"	37' 7"	38' 10"	39' 4"
Fresh Water Cap. (gal.)	42	42	42	42	42	42	42	42	42	42	42
Black Water Cap. (gal.)	42	42	42	42	42	42	42	42	42	42	42
1/2 Bath/Outside Sink - Grey/Black Waste (gal.)	-	-	-	-	-	42	-	-	-	42	42
Grey Water Cap. (gal.)	84	84	84	84	84	84	84	84	84	84	84
Tire Size (in.)	15"	16"	15"	15"	15"	15"	15"	16"	16"	16"	16"
Awning Size (ft.)	18'	15'	16'	20'	16'	17'	17'	17'	17'	21'	TBD



# SABRE | FEATURES

## INTERIOR



## EXTERIOR & UTILITIES





## SUPERIOR SABRE FEATURES

1. Optional free standing dinette w/ leaf extension and flip-up storage
2. Optional air mattress hide-a-bed sofa w/linen drawer
3. 8 cubic foot Dometic® refrigerator w/residential wood front
4. Cell phone charging/organizer station
5. Optional solid surface countertop by LG®, backsplash and opt. pull-out sprayer
6. Self edged countertop w/under-mounted American Stonecast sink that w/stands up to 450 degrees w/pull-out sprayer
7. Full extension drawers
8. Porcelain toilet w/foot pedal flush and "power flush" jets
9. Large under-mounted American Stonecast sink w/cover in bathroom allows space for hair and beauty products
10. 60 x 80 queen bed w/quilted bedspread and pillow shams (2)
11. 32" HD LCD TV, CD/DVD/AM/FM player w/5.1 Dolby surround sound, and optional electric fireplace
12. Steel belted radial tires
13. Axles w/Super Lube® bearings
14. Hitch pin cover
15. Optional flip-down bike/utility rack
16. PlaTTform™ slide-out floors are moisture resistant
17. Docking station (FW only)
18. 30 amp detachable cord
19. 12" Fantastic® fan
20. Whole system water filtration
21. LP quick disconnect
22. Slam-latch luggage doors
23. 3-side pass-thru storage w/ spare tire storage
24. "W/in Reach" water heater bypass valve
25. E-Z Winterize Valve (FW only)

## TRUE SIX-SIDED ALUMINUM CONSTRUCTION

### Sidewall Construction (R-9)

- Hi-Gloss Gel-Coated Fiberglass including Compartment Doors
- 1/8" Lauan Backer
- 2nd 1/8" Lauan Backer w/Staggered Seams
- Welded Aluminum Wall Studs (All Openings Framed in Aluminum Tubing)
- High Density Solid Block Foam Insulation
- 1/8" Interior Decorative Board

### Roof Construction (R-14)

- Vented Attic
- One-Piece EPDM Rubber Roof w/12 Year Warranty
- 3/8" Roof Decking
- EcoBatt Glasswool Insulation
- Aluminum Wrapped AC Duct
- 4-1/4" Tapered Aluminum Roof Trusses
- 1/8" Decorative Ceiling Board

### Floor Construction (R-14)

- 5/8" Seamless Floor Decking w/25 Year Warranty
- Welded Aluminum Floor
- Large-Capacity Heat Duct Plenum
- EcoBatt Glasswool Insulation
- DARCO Wrapped Main Floor Moisture Barrier
- Tanks Wrapped in Heat Reflective Insulation
- Corrugated, Puncture Resistant Underbelly



## SABRE MID-PROFILE ADVANTAGES

**A.** The smooth slope of the Sabre roof line provides superior tracking behind your truck. Our roof has no sharp angles to catch the wind.

**B.** The combination of the front cap contours and lower front height allows the Sabre to cut through the wind. This undoubtedly provides reduced wind resistance compared to other brands w/a higher front profile.







**Learn More**  
Scan this barcode using a QR Reader on your smart phone to learn more about Forest River.



A Berkshire Hathaway company.

Follow Us On  
**Facebook**



**Custom Partial Exterior Paint Option**



## PEACE OF MIND

### Emergency Roadside Assistance

Forest River Roadside Assistance Card provides free jump starts, tire changes, fuel delivery and lock-out service.

### Sabre by Palomino

Forest River Inc.  
2412 Century Drive, Goshen, IN 46528  
Phone: 269-432-3271  
www.palomino.com

All illustrations and specifications contained in this literature are based on the latest product information at time of publication. Forest River, Inc. reserves the right to make changes in prices, colors, materials, equipment and specifications at anytime without notice and assumes no responsibility for any error in this literature. All weights shown are approximate. All units are shipped F.O.B. Goshen, Indiana.  
**CONSULT YOUR LOCAL DEALER FOR WARRANTY INFORMATION.**



**Forest River, Inc. encourages our customers to purchase their Forest River products from a local dealership whenever possible for the following reasons:**

- 1) Forest River, Inc. dealers are independently owned and operated businesses so priority service and scheduling is at their discretion and is often provided to customers that purchased their unit at that dealership.
- 2) Purchasing locally allows customers to establish meaningful relationships with a dealer, enhancing the RV experience through assistance with product questions, user tips or RV regulations for your state or country, and much more!
- 3) Canadian customers must meet requirements to bring an RV purchased out of the country to their home. These requirements may involve additional inspections and certifications, taxes and fees. Your local Canadian Dealer is a professional at meeting these requirements.
- 4) Scheduling timely warranty repairs and adjustments through a local dealership provides far greater flexibility and convenience to you, the customer!

It is the goal of Forest River, Inc. that all of our RV owners fully enjoy the RV experience and that customer satisfaction meets or exceeds their expectations!



### PRE-DELIVERY INSPECTION FACILITY

20,000 square feet of quality assurance. The bare essentials for a premium product. This state-of-the-art facility gives immediate daily feedback to production for quality assurance in every unit built.

### Your Sabre Dealer: