

CANYON TRAIL



CANYON TRAIL
CANYON TRAIL XLT
CANYON TRAIL "AZTEC EDITION"



YELLOWSTONE RV

CANYON TRAIL · CANYON TRAIL XLT · CANYON TRAIL "AZTEC EDITION"



YELLOWSTONE

SMART BY DESIGN.

OWNER APPROVED. SINCE 1948.

With a rich history dating back 64 years, Yellowstone RV is reborn with a new vitality. We provide more luxury features and appointments at competitive prices with high-end construction and innovative designs.

Yellowstone is a breath of fresh air that you will appreciate for many years to come.

INNOVATION The Canyon Trail living area features excellent over head storage cabinets with decorative glass inserts, dual halogen reading lights, decorative wall light and pleated night shades. Our slide room ceiling height is 6' 2" vs. the 5' 10" height found in many other brands. Our luxurious interior appointments surround you in comfort.





A.

32FRBW IN COPPER



B.



C.

- A. The 32FRBW main living area provides tremendous space and comfort shown with optional deluxe recliners, air mattress hide-a-bed, free standing table and chairs and Espresso décor with leather window valence and sofa trim.
- B. The "Aztec Edition" surrounds you in complete luxury shown with our "Onyx" free standing table and chairs and Espresso décor with leather window valence and sofa trim.
- C. The 33FSBI "Aztec Edition" features outstanding kitchen cabinet, drawer and countertop space shown with optional "Wonderstone" countertops.

- D. This 32FRBW "Aztec Edition" kitchen area features rich two tone "Ivory" hardwood and "Bayridge Maple" cabinetry, leather touch deluxe recliners and optional solid surface countertops.
- E. The "Aztec Edition" master bedroom suite maximizes living space with a flush floor design, full 6' 4" ceiling height at the bedroom closet with cedar lining, recessed shoebox and built-in floor safe. The over bed storage cabinets, bookshelf and night stand shelves provide a place for everything you need.



D.



E.

SPACIOUSNESS The Canyon Trail living area features residential comforts like coordinating recliners, an expandable dinette table with a top that slides and swivels and built in storage everywhere you turn. Our spacious residential kitchen features stainless steel sinks, high arching faucet and available Wonder Stone or solid surface countertops. You'll truly enjoy the wide open spaces of Canyon Trail!



SPECIAL FEATURES

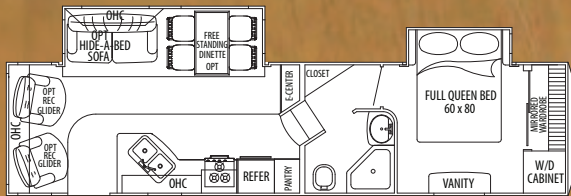
- A.** The Canyon Trail bedroom slide models feature a 12" deep ABS storage tub under the bed deck to provide the best under bed storage compartment in the industry!
- B.** The basement storage area of our advanced profile fifth wheels offer a hinged front bulkhead wall to provide a much larger capacity and more accessible pass-through storage than other brands with a fixed wall.
- C.** The "Interior Convenience Center" is located at the entry door way of the RV and includes a hinged door covering the individual control switches for each slide room, the systems monitor panel, switches for the power awning, the ceiling fan, ceiling lights, exterior lights, and optional heated tank pads. Also, the fantastic fan control panel is located in this area.
- D.** Canyon Trail features a full six-sided welded aluminum super structure with vacuum-bond laminated sidewalls.
- E.** The exterior convenience center provides a central location for most plumbing connections. This area contains low point drains for hot and cold water lines, a water heater bypass valve, the city water connection, a black tank flush, exterior shower, handy light, a full coach water filtration system and easy winterization system to pump anti-freeze into the water system. (Advanced profile models only)



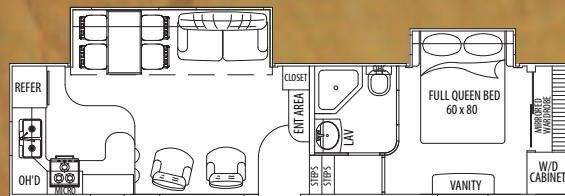
CANYON TRAIL ADVANCED PROFILE FLOOR PLANS



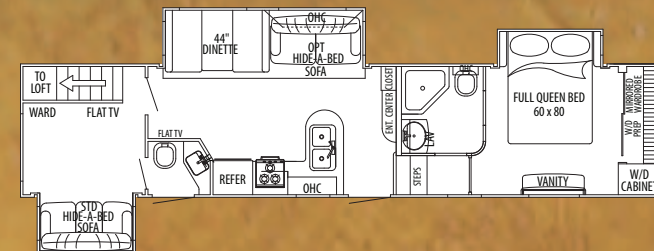
29FRBW



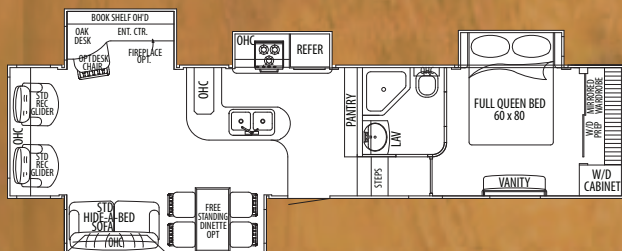
31FRKT



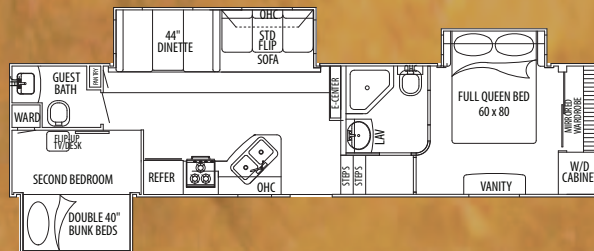
35FLFT



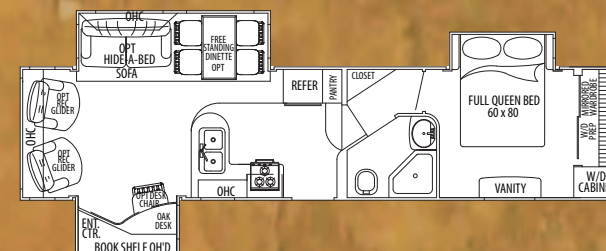
33FRLQ



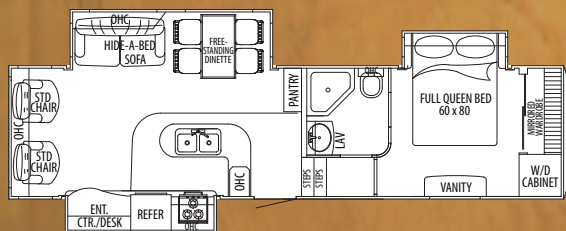
32FBHT



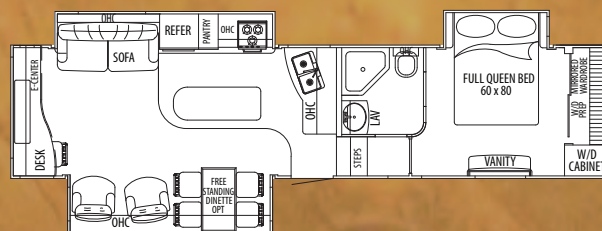
32FRBW



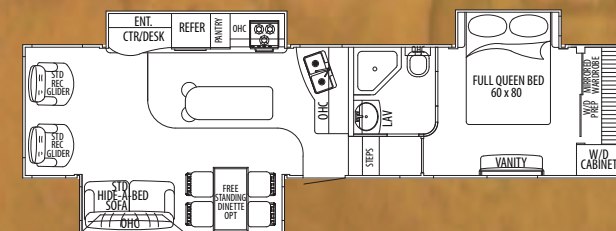
30FRLW



33FRET



33FSBI



Floor Plan	29FRBW	30FRLW	31FRKT	32FBHT*	32FRBW	33FRET	33FSBI	33FRLQ	35FLFT*
Length Overall	34' 5"	34'	34' 5"	36' 3"	36' 6"	36' 7"	36' 7"	37' 7"	39' 2"
Width	96"	96"	96"	96"	96"	96"	96"	96"	96"
Exterior Height w/ A/C	12'4"	12'4"	12'4"	12'4"	12'4"	12'4"	12'4"	11'9"	12'4"
Main Slide Room Height	6'2"	6'2"	6'2"	6'2"	6'2"	6'2"	6'2"	6'2"	6'2"
Dry Weight (lbs.)	9,207	10,086	9,352	TBA	10,007	10,310	9,869	11,180	11,007
Hitch Weight (lbs.)	2,210	2,370	1,890	TBA	2,200	2,310	2,370	2,100	2,260
Net Carrying Capacity (lbs.)	3,403	4,248	2,938	TBA	3,253	2,400	4,501	2,920	3,253
Fresh Water Tank Cap. (gal.)	60 GAL.	60 GAL.	60 GAL.	60 GAL.	60 GAL.	60 GAL.	60 GAL.	60 GAL.	60 GAL.
Grey Water Tank Cap. (gal.)	80 GAL.	80 GAL.	80 GAL.	80 GAL.	80 GAL.	80 GAL.	80 GAL.	80 GAL.	80 GAL.
Black Water Tank Cap. (gal.)	40 GAL.	40 GAL.	40 GAL.	40 GAL.	40 GAL.	40 GAL.	40 GAL.	40 GAL.	80 GAL.
Axle Weight Rating (Lbs. per axle)	5,200	5,200	5,200	5,200	6,000	6,000	6,000	6,000	6,000
Furnace (BTU's)	35,000 BTU	35,000 BTU	35,000 BTU	35,000 BTU	35,000 BTU	35,000 BTU	35,000 BTU	35,000 BTU	35,000BTU
LP Capacity	Dual 30 LB.	Dual 30 LB.	Dual 30 LB.	Dual 30 LB.	Dual 30 LB.	Dual 30 LB.	Dual 30 LB.	Dual 30 LB.	Dual 30 LB.
Water Heater Capacity	10 GAL.	10 GAL.	10 GAL.	10 GAL.	10 GAL.	10 GAL.	10 GAL.	10 GAL.	10 GAL.

* Not Available in "Aztec Edition" Models

SPECIFICATIONS

CANYON TRAIL XLT FLOOR PLANS

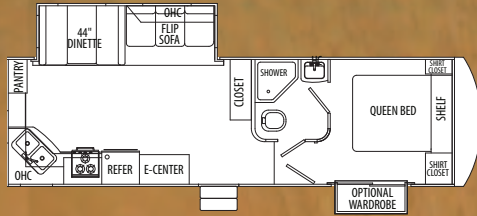
XLT

XLT-SB*

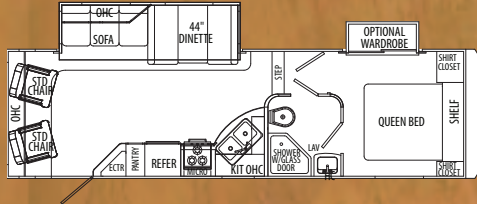
TRAVEL TRAILERS



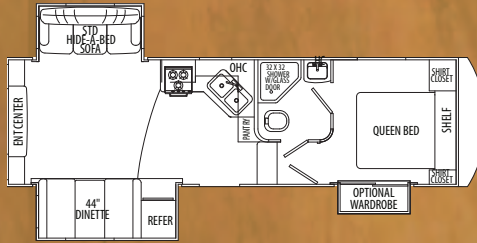
XLT26FRKW



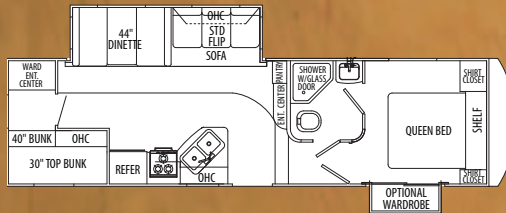
XLT27FREL



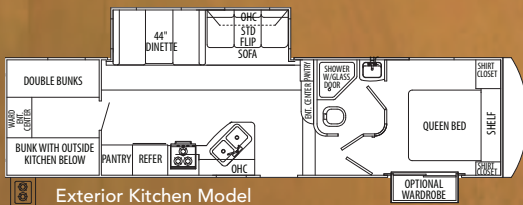
XLT27FRES



XLT28FBHB



32FRTG

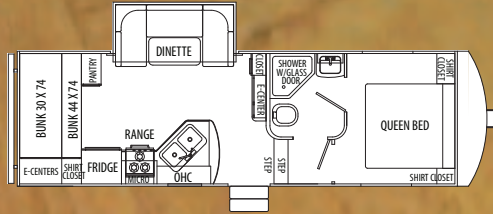


Exterior Kitchen Model

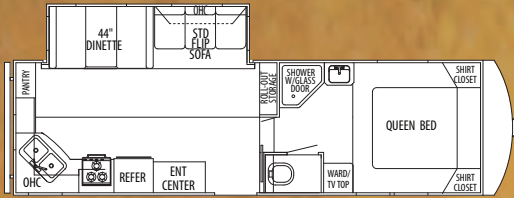


EXTERIOR KITCHEN

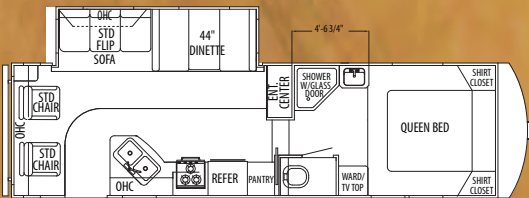
XLT26FSBH



XLT25FRKW



XLT27FRBW

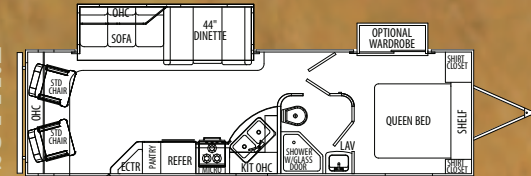


* Designed to be towed by short bed trucks without a slider hitch.

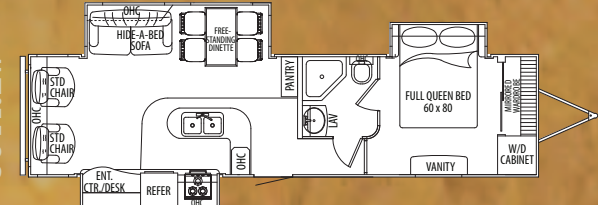
SPECIFICATIONS

	XLT-SB Models			XLT Models					Travel Trailer Models			
Floor Plan	25FRKW	26FSBH	27FRBW	26FRKW	27FREL	27FRES	28FBHB	32FRTG	28TTRL	30TRLW	30TTRE	32TTBH
Length Overall	27'10"	28'11"	28'10"	29'11"	30'8"	30'2"	30'5"	33'7"	32'8"	30'2"	34'2"	30'5"
Width	96"	96"	96"	96"	96"	96"	96"	96"	96"	96"	96"	96"
Exterior Height w/ A/C	11'9"	11'9"	11'9"	11'9"	11'9"	11'9"	11'9"	12'4"	12'4"	11'9"	12'4"	11'9"
Main Slide Room Height	6'2"	6'2"	6'2"	6'2"	6'2"	6'2"	6'2"	6'2"	6'2"	6'2"	6'2"	6'2"
Dry Weight (lbs.)	7,338	7,171	7,505	7,725	7,805	7,719	8,204	8,250	TBD	9,263	TBD	TBA
Hitch Weight (lbs.)	1,615	1,520	1,710	1,925	1,860	1,450	1,230	1,600	TBD	920	TBD	TBA
Net Carrying Capacity (lbs.)	4,556	4,749	4,363	4,625	4,455	3,891	3,186	3,510	TBD	3,640	TBD	TBA
Fresh Water Tank Cap. (gal.)	60 gal.	60 gal.	60 gal.	60 gal.	60 gal.	60 gal.	60 gal.	60 gal.	60 gal.	60 gal.	60 gal.	60 gal.
Grey Water Tank Cap. (gal.)	80 gal.	80 gal.	80 gal.	80 gal.	80 gal.	80 gal.	80 gal.	80 gal.	80 gal.	80 gal.	80 gal.	80 gal.
Black Water Tank Cap. (gal.)	40 gal.	40 gal.	40 gal.	40 gal.	40 gal.	40 gal.	40 gal.	40 gal.	40 gal.	40 gal.	40 gal.	40 gal.
Axle Weight Rating (Lbs. per axle)	5,200	5,200	5,200	5,200	5,200	5,200	5,200	6,000	6,000	5,200	6,000	5,200
Furnace (BTU's)	30,000	30,000	30,000	30,000	30,000	30,000	30,000	35,000	35,000	30,000	35,000	30,000
LP Capacity	Dual 30 LB.	Dual 30 LB.	Dual 30 LB.	Dual 30 LB.	Dual 30 LB.	Dual 30 LB.	Dual 30 LB.	Dual 30 LB.	Dual 30 LB.	Dual 30 LB.	Dual 30 LB.	Dual 30 LB.
Water Heater Capacity	6 gal.	6 gal.	6 gal.	6 gal.	6 gal.	6 gal.	6 gal.	6 gal.	6 gal.	6 gal.	6 gal.	6 gal.

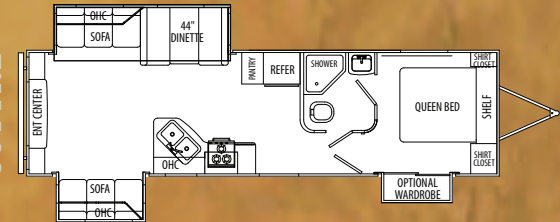
28TTRL



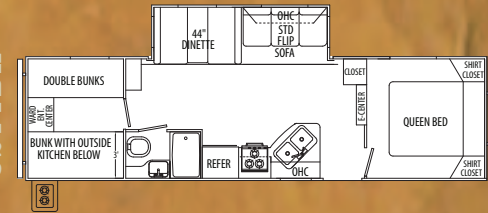
30TRLW



30TTRE



32TTBH



Exterior Kitchen Model

STANDARDS AND OPTIONS

INTERIOR

Linoleum (Kitchen & Bath)
 Carpet w/3/8" Pad (LR/BR)
 Steel Header Over Slide Rooms
 Wall Vinyl
 Leather Touch Ceiling Panel
 Under Cabinet Trim - Kitchen & MSO Overheads
 Doors & Drawers - Bayridge Maple
 Entertainment Center
 Bayridge Paneling
 Crown Molding Trim at Ceiling
 C-Top w/Wide Self Edge
 Slide Out Overhead Cabinet (Sofa)
 Slide Out Facia - Bayridge w/ Accent
 Bronze Wave Glass Doors (LR Overheads)
 Framed Bath & Bedroom Doors
 Recessed Shoe Box (Bdrm Closet)
 Trash Can (Kitchen)
 Int. Grab Handles-Bayridge Maple (Entry Dr & Steps)
 Wood Shelf w/ Valet Rod (Bedroom Wardrobe)
 6'2" Height (MSO)
 Oil Rubbed Bronze Cabinet Hardware

HEATING, COOLING & PLUMBING

Cold Air Return Furnace Filter
 Second A/C Prep w/Power Vent (Bedroom)
 Water Heater By-Pass Valve
 Whole Coach Water Purifier Filter
 Water Management System
 Black Tank Flush
 Wall Mount Fire Extinguisher
 E-Z Winterization System

BATH

Power Bath Vent
 Toilet Topper Cabinet
 Medicine Cabinet - Bayridge Maple
 Towel Ring Oil Rubbed Bronze
 Lav Sink - Parchment
 Oil Rubbed Bronze Bath Hardware (Towl Ring, Tt Holder)
 Shower Pan w/ Surround w/ Neo
 Angle Glass Door - Parchment
 Heat & A/C Duct In Bath

ELECTRICAL

Cable / Satellite Ready w/Dual RG6 Coax Connectors
 Round Multi-Directional TV Antenna w/Amp & Boost
 12V DVD/CD/AM/FM Stereo System w/7 Round Speakers
 Oil Rub Bronze Dinette Light & Wall Light (MSO)
 3" Halogen Lights (MSO ESO)
 Exterior Lights (Patio)
 12V Compartment Storage Light
 Convenience Switch Center w/Door
 50 Amp Service w/ Marincor Cord
 65 Amp Power Converter
 30 Amp Service w/45 Amp Converter (XLT Models)
 Monitor Panel System
 Smoke Detector
 Combo LP/CO Detector
 Hitch Light
 Exterior Battery Compartment
 Battery Disconnect Switch
 Bedside 110V Outlet
 Individual Slide Control Switches (At Entry)
 Basement TV Prep w/110V & Coax Connection
 Exterior 110V GFI Outlet (Door Side)

FURNISHINGS

Decorative Fabric Headboard
 Book Shelf Over Bedroom Headboard
 Wall Border Tape (KIT,LR,BR)
 Fabric Valances w/Drapes (Bedroom)
 Jack Knife Sofa
 Booth Dinette
 (1) Pot & Pan Drawer Under Dinette Booth
 Pantry w/ Shelves
 Dual Euro Chairs w/ Ottoman (N/A Bunk Models)
 ABS Under Bed Storage w/Lift Assist Struts
 Innerspring Mattress
 4 Drawer Dresser (Bed Slide Models)
 1" Deep ABS Lined Under Bed Storage w/ Lift Assist Struts

APPLIANCES

6 Cu.Ft. Refer
 Wood Grain Panel Refer Inserts
 Range Hood w/Light
 3-Burner High Range w/16" Oven w/ Auto Ignition w/Stove Cover
 High Arching Dual Lever Faucet
 Residential Sized Stainless Steel Sink
 (2) Black Sink Covers

EXTERIOR

Electric Slide Room Mechanisms
 Smooth G-3 Exterior Fiberglass
 Basement TV Prep w/110V Outlet/ Coax Connection
 Aluminum Bumper Wrap
 Extended Hitch Pin
 Crank Down Tire Carrier w/Spare Tire
 Sewer Hose Storage Compartment
 Radius Triple Entry Steps
 Security Light
 Radius Skirt Metal
 Roof Ladder
 Front Fiberglass Cap w/LED Docking & Clearance Lights
 2" Hitch Receiver
 Felt Liner (Basement Area)
 30X72 Rad Entry Door w/Deadbolt Lock
 Patio Awning
 Rear Stabilizer Jacks
 (2) 30# LP Bottles w/Auto Change
 5200Lb Axles (29FRBW 30FRLW 31FRKT)
 6000Lb Axles (32' & Up)
 Equa Flex Suspension
 Slam Latch Cargo Doors
 Battery Tray On Hitch (XLT TT)
 Manual Front Tongue Jack (XLT TT)
 Safety Chains On Hitch (XLT TT)
 Aluminum Diamond Plate Front Rock Guard (XLT TT)
 15" Radial Tires w/White Mod Rims
 E-Z Lube Axles
 Fold Down Bulkhead Wall In Basement (N/A XLT Models)

OPTIONS

Generator Prep (Advanced Profiles Only)
 5.5 Onan Generator w/Prep & 40# Lp Bottles (Advanced Profiles Only)
 12V Heat Pads For Holding Tanks
 Double Insulation (R28 Roof, R32 Floor)
 Spare Tire & Carrier (XLT)
 High Gloss Exterior Fiberglass
 Power Front Tongue Jack (TT only)
 Rear Electric Stab Jacks
 ABS Hitch Pin Cover (N/A w/Roto Flex)
 Thermal Pane Windows
 Power Awning
 16" Radial Tires w/ White Mod Wheels P/O 15" (Req. Models 32' & Up)
 Aluminum Wheel Upgrade
 Roto Flex Pin Box Hitch
 15,000 BTU A/C IPO 13.5 BTU
 2nd 13.5 BTU A/C (BR)
 Electric Fireplace (30FRLW 30TRLW, 32FRBW 33FRET 33FRLQ 33FSBI)
 42,000 BTU Furnace
 Fantastic Fan W/Touch Pad Control Loc: Br / Kit / Lr

50 Amp Service & Washer/Dryer Prep 2nd A/C Prep (30TRLW Only)
 Free Stand Dinette (4) Chairs W/Strg Ceiling Fan
 8 Cu.Ft. Refer
 TV Swing Arm Bracket (LR)
 32" LCD TV w/Swing Arm Bracket (LR)
 19" LCD TV w/Built In Dvd W/Quick Release Bracket (BR)
 19" LCD TV w/Built In DVD W/Swing Arm
 Quick Release Brkt & Prep (Bnkrm/Bsmt)
 Central Vacuum
 10 Gal Gas/Elec DSI Water Heater (N/A XLT Models)
 Dual Recliners P/O Euro Chairs (N/A 32FBHT 35FLFT)
 Desk Chair (N/ABunk Models)
 Air Hide-A-Bed Sofa
 Pillow Top Mattress Upgrade
 Washer Dryer Prep
 Wonder Stone Countertop
 Polished Solid Surface Countertop
 6-Panel Refer Inserts IPO Std

CAMPING WITH COMFORT PACKAGE (REQUIRED)

Six Sided All-Alum Construction
 Pleated Fabric Shades
 Premium Foam Queen Mattress
 Black Framed Tinted Safety Glass Windows
 Microwave Oven
 13,500 Btu Air Conditioner
 Swing Away Grab Handle (Entry Door)
 Exterior Speakers

Outside Shower
 Skylight In Shower & Hallway
 Porcelain Toilet
 Ball Bearing Drawer Guides w/ Full Extension
 Enclosed/Heated Underbelly & Valves
 Propane Quick Connect
 Snap Pins On Front Jack Legs (FW)

AZTEC EDITION LUXURY PACKAGE

Grey High Gloss Exterior Fiberglass & Trim
 Two-Tone Bayridge & Ivory Cabinets
 Two-Tone Fabric & Leather Valances w/Arched Top
 Two-Tone Fabric & Leather Air Bed Sofa
 Hidden Security Safe
 Deluxe 60 X 80 Pillow Top Mattress
 Grey Hitch Pin Cover
 Color Matched Power Awning Hdwr/Vinyl
 Living Room Clock
 Onyx Free Standing Dinette w/4 Chairs (Top Swivels & Slides)
 Leather Touch Deluxe Recliners
 16" Alum Wheels w/Black Accent
 Upgraded Aztec Graphics



33FSBI Aztec Edition Kitchen



CANYON TRAIL



CANYON TRAIL AZTEC EDITION



CANYON TRAIL XLT TRAVEL TRAILER



INCLUDES:

Roof (R-28)

- R-14 Fiberglass Roof Insulation
- R-14 Thermal Foil Roof Insulation

Floor (R-32)

- R-14 Fiberglass Floor Insulation
- R-14 Thermal Foil Underbelly Insulation
- Fully Enclosed Heated Basement, Tank Areal & Dump Valves
- R-14 Fully Insulated Bath & bedroom Floor Deck
- Insulated Chassis Frame Rails
- Attic Vents to Remove Moisture



24 MONTH WARRANTY
on Structural & Electrical
Componenets

In addition to our standard one year warranty, Yellowstone RV offers an exclusive 24 month warranty on structural components. In addition, major component manufacturers are providing 24 month warranties on their products installed in Yellowstone units such as refrigerator, antenna, furnace, water heater, air conditioner, awning, range, microwave and more. See official written Yellowstone warranty for complete details & restrictions.

1948

First Yellowstone built



1950s, freeway era begins

1960



1963, cassette tape player invented

1970



1972, Yellowstone Park celebrates its 100th birthday

1969, Neil Armstrong walks on the moon

1980



1982, Vietnam Veterans Memorial completed

1990



1990, 255 million people visit national parks

2000



2006, travel & tourism supports 8.3 million American jobs

2011

Rebirth of Yellowstone RV



WWW.YELLOWSTONERSV.COM · 800.811.0302

For more information contact the dealer below.

For more information and available options, contact your local Yellowstone Dealer, www.YellowstoneRV.com. Yellowstone reserves the right to make changes in prices, colors, materials, components, and specifications and to discontinue models at any time without notice or obligation. Assumes no responsibility for any error in type or print reproduction of specifications or floor plans in this brochure. Photos may show equipment or items that are optional and are not included in the price of the trailer. Experience and review a current model at your nearest dealer. ©2010 Yellowstone RV, Nappanee, Indiana U.S.A.