

SILVERBACK

By CEDAR CREEK



.....
THE SMART CHOICE FOR THE EXPERIENCED RV'ER
.....

WELCOME TO THE SILVERBACK



La-Z-Boy®
recliners
come
Standard

29RE living room and kitchen slides are detailed with a beautiful double cathedral solid wood fascia. The large entertainment center contains a 32" LCD television.



▲ This spacious 29RE kitchen area provides loads of counter and storage space.



▲ 29RK provides enormous storage and counter space in a 2 slide room floorplan.



▼ The Silverback 33REA allows plenty of living space for visiting family and friends. The standard freestanding table even includes an extra leaf for that little extra space that you sometimes need.

▼ 31B2 and 35QB4 feature dramatic radius cabinets and a side aisle bath to create a high-end residential look and feel.



**SILVERBACK
ADVANTAGE**



Enjoy your favorite TV shows or movies in dazzling picture clarity and superior sound quality, your 32" Jensen LCD TV is designed specifically for RV use. Built to withstand rugged road conditions, extreme temperatures, vibrations and voltage variations. The subframe consists of a reinforced internal structure and integrated mounting points. The only television designed with Mother Nature in mind...



THE SILVERBACK ADVANTAGE



1.



2.



3.



4.



5.



6.



7.



8.

1. Residential Serta® Dreamscape mattress with residential quality bedspread and pillow shams are standard on all models.
2. 33REA standard bedroom fireplace.
3. Newly redesigned bathroom includes a larger sink top and a double stack medicine/towel cabinet.
4. 22" Deep full extension drawers where applicable.
5. Hidden storage under all freestanding chairs.
6. Hide-a-Bed air mattress sofa includes a linen storage drawer.
7. Standard 29RK outside/inside kitchen with small refrigerator, LP cooktop and outside shower allows access from inside or outside the unit.
8. True Corian® countertops.



COLD ROOM TESTED

- ✓ Calculated R-Value = 38 in the Roof & Floor
 - ✓ 12 Volt Heating Pads on all Tanks
 - ✓ 2 Layers of Residential Ecobatt® Insulation
 - ✓ 1 Layer of Radiant Shield Thermo-Foil
- What else would you desire in a fifth wheel?



CEDAR CREEK'S FAMOUS ALL ALUMINUM SUPER STRUCTURE

Silverback's all aluminum cage construction is on 16" centers or less. Silverback depends on the frame for its strength—not lamination. Customers can repair their units easily. The draw back with one piece laminated construction is the fact that it is one piece. With Silverback repairs are a snap. Silverback has one of the most desired types of construction in the country!



ALUMINUM FLOOR STUDS



ALUMINUM STUDDED SIDEWALLS AND ROOF TRUSSES ON 16" CENTERS OR LESS



THICK SILAPRENE (475 PSI) GUARANTEES SOLID CONTACT BETWEEN THE GELCOAT AND ALUMINUM FRAME WITHOUT LAMINATION



RESIDENTIAL, ECOBATT™ GLASSWOOL INSULATION, DESIGNED BY NATURE

MORE CONSTRUCTION ADVANTAGES

THE "TRUE" GELCOAT ADVANTAGE!

"True classic performance gelcoat is the *best of the best* the RV industry has to offer. "True" gelcoat is thicker, stronger with higher impact resistance and flexural strength to virtually eliminate sidewall repairs. "True" gelcoat is the *only product that will retain its high gloss finish and includes side compartment and entry doors!*



5/8" TONGUE AND GROOVE, MARINE GRADE PLYWOOD FLOOR

TAP TEST!

You will be surprised how many competitors use false foam in their fascia. Silverback's solid wood fascia gives "A" quality difference you can hear and feel!



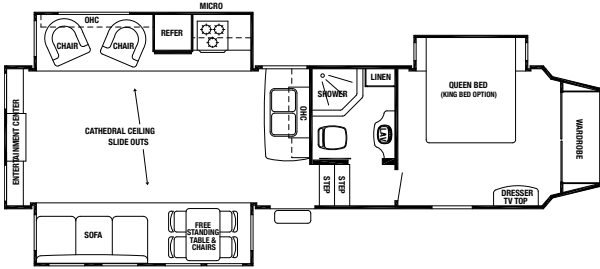


90°+ TURNING RADIUS

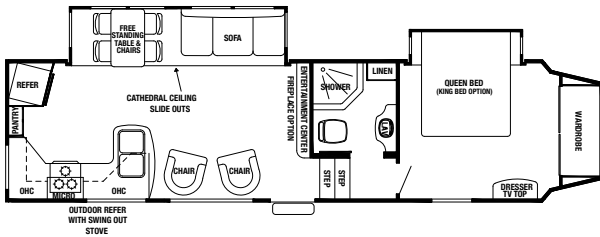
The aerodynamic, front cap achieves a FULL 90 degree (plus a little extra) turning radius even when towed by short bed trucks. Accept no limited imitations!

SILVERBACK FLOORPLANS

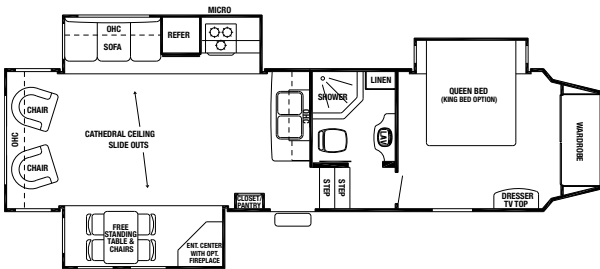
29RE



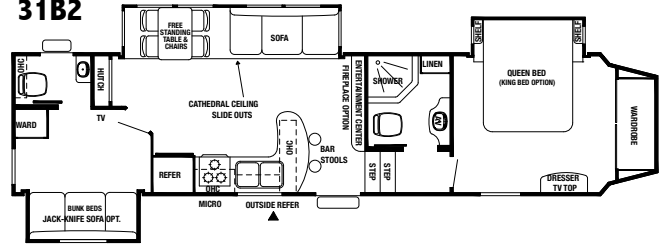
29RK



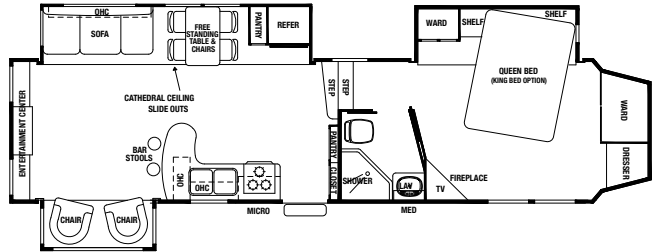
29RL



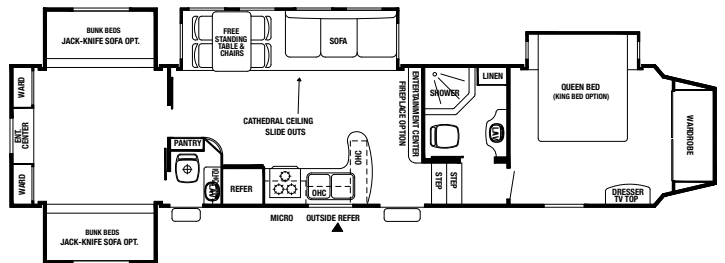
31B2



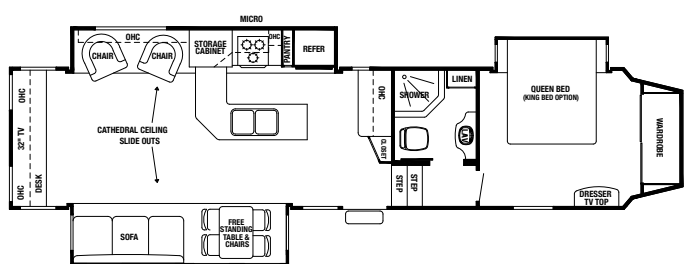
33REA



35QB4



35RE



SILVERBACK MODEL	29RE	29RK	29RL	31B2	33REA	35QB4	35RE
Exterior Length	34' 7"	33' 9"	34' 6"	37' 4"	36' 0"	38' 6"	38' 6"
Exterior Height with Air Conditioner	12' 9"	12' 9"	12' 9"	12' 9"	12' 9"	12' 9"	12' 9"
Exterior Width	96"	96"	96"	96"	96"	96"	96"
Front Bedroom Interior Height	6' 4"	6' 4"	6' 4"	6' 4"	6' 4"	6' 4"	6' 4"
Hitch Weight	1,615	1,755	1,765	1,585	1,850	1,947	2,062
Axle Dry Weight	8,175	9,650	8,249	9,040	8,699	10,229	9,406
Unloaded Vehicle Weight	9,790	9,709	10,014	10,684	10,549	12,176	11,468
GVWR	13,615	13,755	13,765	13,585	13,850	15,500	15,500
Gross Carrying Capacity	3,766	4,046	3,751	2,901	3,301	3,324	4,032
Dual Axles (2)	6,000#	6,000#	6,000#	6,000#	6,000#	7,000#	7,000#
Electric Awning Size	15'	15'	15'	21'	21'	21'	18'
Furnace Size	35,000 BTU	35,000 BTU	35,000 BTU	35,000 BTU	35,000 BTU	42,000 BTU	42,000 BTU
Demand Fresh Water Capacity	66	66	66	66	66	66	66
Black and Grey Water Capacity	3 (40 Gal.)	3 (40 Gal.)	3 (40 Gal.)	4 (40 Gal.)	3 (40 Gal.)	5 (40 Gal.)	3 (40 Gal.)
Sleeping Capacity	6	6	6	6-8	6	8-10	6

SILVERBACK FEATURES

SILVERBACK EXPLORER PACKAGE:

LCD Flat Panel HD Ready Television, 12v. CD/DVD, MP3 Player, I-Pod Docking Stereo System with 2 Exterior Patio Speakers, 8 Cu. Ft. Refrigerator, Hide-a-Bed Sofa with Air Mattress, Over the Range Microwave with Vent, True Nobel Classic Fiberglass Gelcoat Exterior, Black Tank Flush, 16" Tires, E-Z Flex Suspension, Bathroom Breeze Power Fan in Bathroom, Rear Stabilizer Jacks, Tinted Safety Glass, Entire Water Filtration System, Cedar Creek Switch Control Center, Winegard HD Roof Satellite Prep

STANDARD FEATURES

- 10 Gallon Water Heater
- 12 Volt Heated Holding Tanks
- 15,000 BTU Air Conditioner w/ "H" Duct System
- 16" Aluminum Rims
- 50 Amp Converter with Charger
- All Solid Wood Fascia
- Bathroom Breeze Fantastic Fan
- Brace & Wire for 2nd Air Conditioner
- Cathedral Living Area Slide-Rooms
- Create-a-Breeze™ Fan with Thermostat & Rain Sensor in Kitchen
- Digital Thermostat for Heat & Air Conditioner
- Docking Station with Easy Access By-Pass Valves for the Water Heater Systems
- Enclosed & Insulated Underbelly
- Dexter E-Z Flex Rubber Equalization System with Grease Zerks
- Front Storage for Spare Tire
- Full Extension Drawer Roller Guides
- La-Z-Boy® Fabric Recliners (W/A)
- LED Tail Lights
- Lighted Entry Step
- New Interior — Hickory Stained Hardwood
- Porcelain Toilet
- Serta® Residential Mattress
- "Soft Top" Vinyl Storm Doors
- New Shaw® Carpet

**DEXTER AXLES/BRAKES/
SUSPENSION PERFORMANCE &
SAFETY!**



- Nev-R-Adjust™ Brakes are Always Properly Adjusted for Improved Stopping Power in Half the Distance
- E-Z Flex™ Rubber Equalization System with 8 Grease Zerks per Side
- Heavy Duty Axles with Bronze Bushings in Shackles (No Plastic Bushings Like Our Competitors)

OPTIONS

- Washer / Dryer Prep (Combination Only) and 50 AMP Service
- Penguin 2nd Air Conditioner Ducted
- Exterior 12 Volt Stereo System
- Jack-Knife Sofa Replacing Bottom Bunk (35QB Only)
- Booth Dinette Replacing Freestanding Table and Chairs
- King Bed
- Thermopane Windows
- Dirt Devil Central Vac System
- Rebond Carpet Pad
- Outside kitchen - 35QB4
- Bedroom Awning Topper
- Trump Luxury Queen and King Residential Mattress
- Living Room Fireplace

ALL ALUMINUM SUPER STRUCTURE

ROOF - R VALUE = 38

- Radiant Shield Insulation, 97% Reflective / 3% Emission
- Full Length 3/8" Wood Roof Decking for a Full Walk on Roof
- Triple Layer Insulation Supplements the Cohesive Retention Factors of Roof Decking and Rubber Membrane
- 2 x 2 - 16" OC 4" Truss Roof Frame Combined with Uniroyal® Silaprene
- 2 Ply - Tuff Ply Rubber Roof Membrane with Built in Fire Retardant and 12 Year Warranty
- Full Length Drip Rails from the Front to the Rear of the Unit
- Roof is Bolted to Sidewall with 5/16" x 3-1/2" Carriage Bolts
- Attic Vents for Air Circulation

SIDE WALLS - R VALUE 9

- Handmade 2" x 2" / 16" (or less) On Center Sidewalls and Individually

Fastened Custom "L" Brackets Combined with Uniroyal® Silaprene Adhesives for a Strong Flexible Frame without Welding or Lamination. (475 PSI at 2" Per Minute, Marine Grade)

- "True" Fiberglass Classic Performance Plus Gelcoat on all Exteriors—The Best of the Best in Fiberglass. Don't Accept Hi-Gloss Fiberglass - Only True Gelcoat Stands the Test of Time
- All Baggage Doors and Entry Doors are Made out of "True" Classic Performance Gelcoat to Prevent Uneven Aging of Your Unit!
- Automotive UV Clear Coat Paint Coats each Refrigerator Vent to Prevent Early Discoloration (Guaranteed for 7 Years)
- Sidewalls are Bolted to the Floor with 5/16" x 6-1/2" Carriage Bolts at each Outrigger
- Glued R-7 Fiberglass Insulation Expanded to Full Capacity within the Sidewall Frame
- Designed by Forest River, a Unique Slide-Out Seal System for Tighter, Stronger Water Protection - First of Its Class - Compare It!
- 5 Direction Insulation in all Slide-Out Rooms

FLOORS - R VALUE = 38

- Radiant Shield Insulation, 97% Reflective / 3% Emission
- Triple Layer Insulation Enhances the Protective Values of Plywood, Vinyl, Carpet, Carpet Pads, Tank Heaters Etc.
- 3" Aluminum Frame Floor w/In-Floor Heat Ducting and Custom "L" Brackets Combined with Silaprene Adhesives
- 5/8" Tongue & Groove Plywood
- Cambered 10" I Beam "Z" Frame with Large Support Outriggers & Full Length Welds
- Darco Waterproof Underbelly (Fully Enclosed 4' x 8' ABS Removable Panels for Easier Access Into The Underbelly)



EXTERIOR KITCHEN

This innovative exterior kitchen is great for tailgating and outdoor parties - complete with sink, pull-out faucet, counter extension, refrigerator, and grill. Optional on 35QB4.

DECOR OPTIONS

JASMINE ODYSSEY



WALNUT BLOSSOM



COCOA TRUFFLE



SPICE



PRE-DELIVERY INSPECTION FACILITY

20,000 square feet of quality assurance. The bare essentials for a premium product. This state-of-the-art facility gives immediate daily feedback to production for quality assurance in every unit built.



Forest River, Inc. encourages our customers to purchase their Forest River products from a local dealership whenever possible for the following reasons:

- 1) Forest River, Inc. dealers are independently owned and operated businesses so priority service and scheduling is at their discretion and is often provided to customers that purchased their unit at that dealership.
- 2) Purchasing locally allows customers to establish meaningful relationships with a dealer, enhancing the RV experience through assistance with product questions, user tips or RV regulations for your state or country, and much more!
- 3) Canadian customers must meet requirements to bring an RV purchased out of the country to their home. These requirements may involve additional inspections and certifications, taxes and fees. Your local Canadian Dealer is a professional at meeting these requirements.
- 4) Scheduling timely warranty repairs and adjustments through a local dealership provides far greater flexibility and convenience to you, the customer!

It is the goal of Forest River, Inc. that all of our RV owners fully enjoy the RV experience and that customer satisfaction meets or exceeds their expectations!

YOUR SILVERBACK DEALER

SILVERBACK

By CEDAR CREEK

The Smart Choice for the Experienced RV'er

FOREST RIVER INC./CEDAR CREEK DIVISION

501 Hawpatch Road / Topeka, IN 46571

Ph: 260-593-2404 / Fax: 260-593-2447

Parts & Service / Ph: 260-593-3017 / Fax: 260-593-2645

All illustrations and specifications contained in this literature are based on the latest product information at the time of publication. Forest River, Inc. reserves the right to make changes in prices, colors, materials, equipment and specifications at any time without notice and assumes no responsibility for any error in this literature. All units are shipped F.O.B. Topeka, Indiana. • CONSULT YOUR LOCAL DEALER FOR WARRANTY INFORMATION

F-66-451 2011 Forest River, Inc. Litho U.S.A.



Learn More

Scan this barcode using a QR Reader on your smart phone to learn more about Forest River.



A Berkshire Hathaway company.

On The Web at: www.forestriverinc.com/cedarcreek