

Infinity

by Dutchmen



MODERN, ELEGANT

THE ULTIMATE FIFTH WHEEL

MODERN, ELEGANT

THE ULTIMATE FIFTH WHEEL



Model 3470RE
Shown in Sand Decor

Infinity

Optional Sand paint
package shown on cover.

FRONT KITCHEN

Behold the industries only Front Kitchen Luxury Fifth Wheel.

6' 8" ceiling height, a standard 12 cubic foot refrigerator, seating for six along with a standard 32 inch kitchen HDTV and abundant storage space makes the 3870FK the ultimate floor plan for those who love to entertain.



Model 3870FK
Shown in Sahara Decor



Model
3870FK



Model 3870FK



FRONT LOUNGE

Infinity's Front Lounge is taking spacious to a whole new level.

Model 3750FL
Shown in Sand Decor



Model 3470RE



Infinity is poised to become the market leader in luxury fifth wheels. It focuses on feature packed high profile fifth wheel floor plans with spacious living quarters, residential kitchens, great master bedrooms, and storage solutions above and beyond our competition. As the value leader in the high profile fifth wheel market, Infinity is indeed, *the ultimate fifth wheel.*



Model 3470RE



Model 3640RL
Shown in Sahara Decor

ARTICULATING WALL MOUNT DINETTE



- Hardwood Table Top Swings Against Wall for Multiple Dining Options, *Dine While Looking Outdoors!*
- Includes a Built In Table Extension
- Eliminates Center Leg for Added Leg Room



SOLID SURFACE COUNTERTOPS

WITH FLUSH MOUNT STOVE
AND SINK COVERS

- Durable Finish for Years of Use
- Non-Porous Surface - Easy to Clean
- 100% Color Throughout Counter Top
 - Easily Repairable if Damaged
- Stainless Steel Undermount Sink
- Boutique Pull-out Brushed Nickel Faucet

FULL EXTENSION STAINLESS STEEL BALL BEARING DRAWER GLIDES



- **75 Pound Capacity**
- 100% Hardwood Drawer Construction - with Laminated Drawer Sides
- Heavy Duty Drawer Glides
- Full Extension Glides Allow Drawers to Expand Past Cabinet Face for Full Access to Drawer





"CEDAR SUITE" WALK IN CLOSET

The Cedar Suite Walk In Closet utilizes the entire depth of the front cap to create the largest storage closet in the industry.

Features:

- Cedar Lined Wall
- Shoe Racks
- Large Amount of Hanging Space
- Ceiling Light
- Mirrored Sliding Doors
- Shirt Closets & Drawers
- Washer Dryer Prep (Most Floor Plans)



Infinity's fifth wheel bedroom design includes two industry firsts! An innovative, laminated, crowned ceiling design and the cedar suite full walk-in closet.

The arched ceiling design provides for more headroom than any other product in its class, a full 6'8". Plus, increased headroom in the bedroom allows our slide rooms to be taller than most competitors.

Infinity's modern style headboard design adds a touch of elegance. The "Comfort Zone" king size Memory Foam mattress and the Standard Deluxe Pillow Package will help you sleep soundly assuring a restful vacation.

"COMFORT ZONE" KING SIZE MEMORY FOAM MATTRESS

(Queen Mattress on 3250 Model)



INTERIOR FEATURES



1000 WATT SAMSUNG "ALL-IN-ONE" ENTERTAINMENT SYSTEM

- 40" or 32" HD LCD TV
- 5.1 Digital Surround Sound System
- AM/FM/CD/DVD with iPod Input
- 6 Interior Plus 2 Exterior Speakers
- TV Sound Plays Through Surround Sound System
- Universal Remote Controls TV & Stereo System

PLANTATION STYLE BLINDS AND HALOGEN LIGHTING



NO Ledge



NO Carpet Lip

"NO TRIP" GALLEY SLIDE SYSTEM "FLAT FLOOR AT CABINET BASE"

*Includes Accent
Lighting*

SPACIOUS CLOSETS



WASHER DRYER PREP

Washer dryer prep is a standard feature on Infinity fifth wheels.



CENTRAL COMMAND CENTER



Our central command center groups together all of your essential interior and exterior light switches, tank monitors, awning controls and water heater switch.

HAND RUBBED ANTIQUE GLAZED CHERRY CABINETRY



- 100% Cherry Hardwood Cabinet Construction
- Hardwood Doors and Drawer Faces
- Hardwood Cabinet Stiles-Slot Screwed and Glued
- Hardwood Interior Passage Doors
- Hardwood Bedroom Headboard
- Hardwood Slide Fascias and Fireplace Treatment

SOLID CHERRY HARDWOOD CABINET CONSTRUCTION



- Face Frames are Tub Drilled and Screwed for Strength

HIDDEN HINGES



- Elegant, European Style Spring Loaded Hardware
- Keeps Doors Closed Tightly
- Fully Adjustable

"COMFORT AIR" HIDE-A-BED SOFA



- Converts Easily to a Large Queen Bed
- Comfortable Air Mattress Includes Built in Air Pump
- Simply Inflate and Put in Place
- Air Mattress Stores in Large Drawer Below Sofa



GRAND CANYON PACKAGE



Infinity's Grand Canyon Package features:

- Cavernous Exterior Pass Through Storage
- 10" Heavy Duty Stacked Z Rail Chassis
- Industrial Non Skid Rubber Flooring
- Lined Storage Walls & Bath Deck
- TV Prep with Cable Jack and 110V Outlet
- Oversized 76" X 30" Entry Door with "Welcome Back" Light
- Large Power Awning with Remote Control

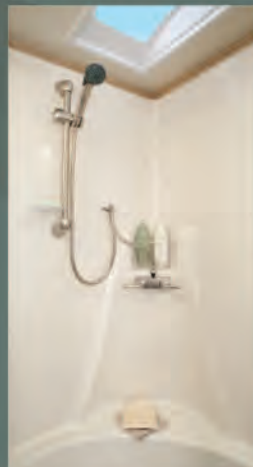


1" Thick Insulated Baggage Doors with Metal Slam Latch Hardware

ONE PIECE FIBERGLASS SHOWER SURROUND WITH SEAT AND PREMIUM SHOWER WAND



All bathrooms are heated and air conditioned.



TRAIL-AIR EQUA-FLEX SUSPENSION

WITH QUAD SHOCK ABSORBERS



Trail-Air Equa-Flex rubber equalizer suspension system is standard on Infinity fifth wheels. The system protects your investment by allowing axles to travel independently to reduce road vibrations and create a smoother ride.

CONVENIENCE DOCKING STATION



- Fresh and City Water Fills
- Black Tank Flush
- By-Pass Valves
- 110V Outlet, Light, Cable and Satellite TV Hookups
- Quick Connect Hose with Sprayer

HYDRAULIC FRONT LANDING GEAR



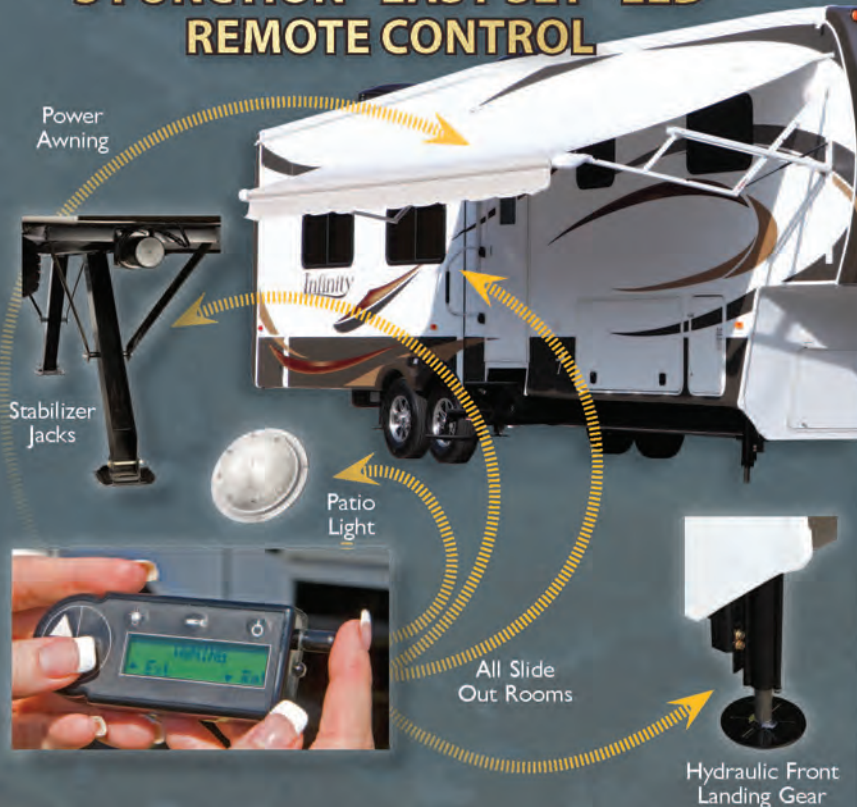
- Nearly 15 Times Faster than Electric Jacks
- Double the Lifting Capacity over Electric Jacks
- Includes a Deep Cycle Battery

90° EXTENDED TURNING RADIUS FRONT CAP



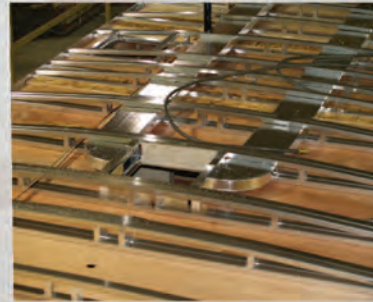
Infinity's expanded turning radius front cap includes a back-up mirror and LED lights to make hitching-up a breeze. Perfect for extended cab or short bed trucks.

5 FUNCTION "EASY SET" LED REMOTE CONTROL



GLACIAL PACKAGE

QUIET ZONE 15,000 BTU "OVAL AIR" AIR CONDITIONING



- Dual Zone A/C System
- Recirculating Ductwork
- Cools Rooms Evenly
- Programmable Digital Display
- Bedroom Thermostat
- 26% More Air Flow
- Decreased Vibration
- Powerful 3 Speed Blower

HEATED AND ENCLOSED UNDERBELLY



- Flex Foil Insulation in Underbelly, Roof & Slide Room Floors
- Heated, Insulated & Enclosed Tanks
- Heated & Insulated Knife Valves
- 40,000 BTU Furnace with Forced Air Heat

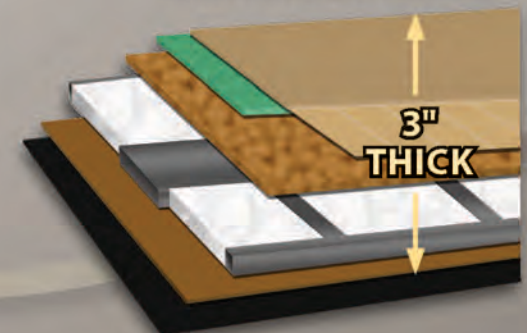
HIGH INSULATION VALUES



R-VALUES

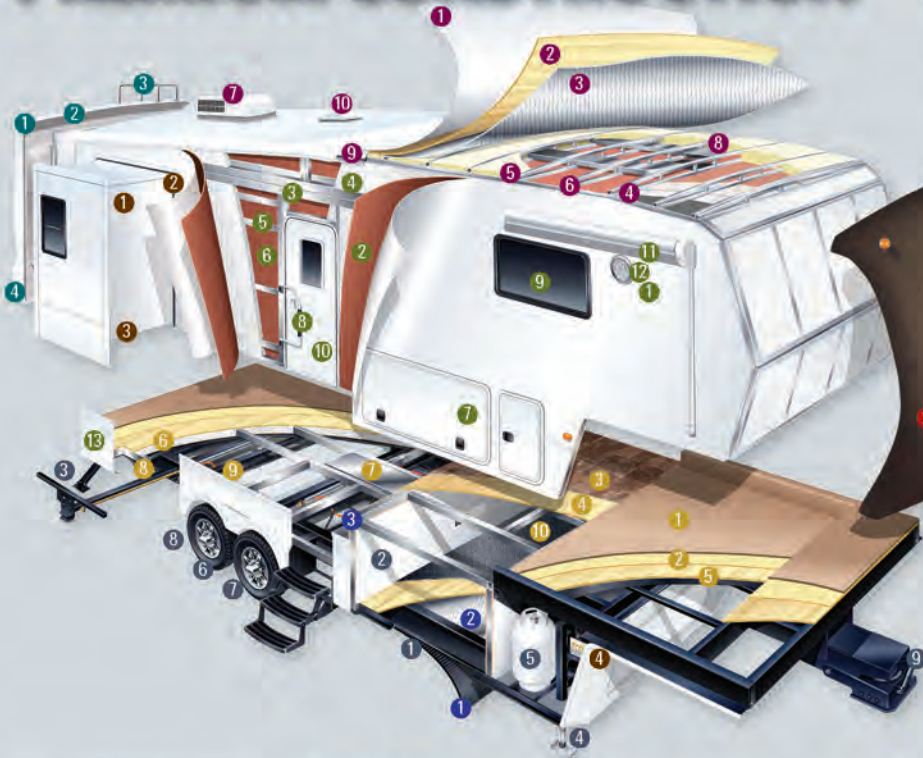
- R-40 in Roof, Floor and Behind Front Cap
- R-24 in Slide Room Floors
- R-9 in Walls

PREMIUM 3" THICK LAMINATED FLOOR



- Vacu-Bond Laminated Construction
- Heavy Duty Foam Insulation
- Welded Aluminum Framing
- 5/8" Thick Decking

PREMIUM CONSTRUCTION



WALL CONSTRUCTION

- 1 Gel-Coated Fiberglass Exterior
- 2 1/8" Wood Backer Board
- 3 2" Welded Aluminum Studs
- 4 High Density Block Foam Insulation
- 5 Galvanized Steel Backer Strips
- 6 Decorative Wall Vinyl
- 7 Upgraded Metal Slam Latch Insulated Baggage Doors
- 8 Oversized Folding Entry Assist Handle
- 9 80% Dark Tinted Safety Glass Windows
- 10 Deluxe Entry Door with "Welcome Back" Light
- 11 Power Patio Awning
- 12 Extra Large Security Light
- 13 Radius Aluminum Skirt to Frame

SLIDE ROOM CONSTRUCTION

- 1 Laminated Slide Room Construction
- 2 Triple-Seal Slide System
- 3 "Hydra Glide" Hydraulic Slide Mechanism
- 4 Auxiliary Hydraulic Slide Selector Valves

FRONT CAP

- 1 Custom Designed Fiberglass Front Cap with Gel Coat Finish
- 2 Front Cap Designed for Short Bed Trucks with Enhanced Turning Radius
- 3 "Eye Site" Hitch Assist Mirror
- 4 Dual LED Hitch Lights

REAR CAP

- 1 Custom Fiberglass Rear Cap with Gel Coat Finish

- 2 Laminated Aluminum Framed Rear Wall
- 3 Rear Roof Access Ladder
- 4 50 Amp Detachable Power Cord

FLOOR CONSTRUCTION

- 1 Residential Carpet
- 2 Residential Carpet Pad
- 3 Premium Beauflor® Vinyl Flooring
- 4 5/8" One Piece Seamless Floor Decking
- 5 3" Welded Aluminum Floor Structure
- 6 High Density Block Foam Insulation
- 7 Aluminum Heat Ducting
- 8 1/8" Backer Board Below Floor
- 9 All Weather Vapor Barrier
- 10 Rubber Diamond Plate Flooring

Laminated Floor, Sidewalls, Slide Room End Walls and Bedroom Ceiling

Standard Graphics Package



Standard graphics package shown above.
Optional Sand paint package shown on cover.

ENCLOSED AND HEATED UNDERBELLY

- 1 Polypropylene One Piece Underbelly
- 2 Reflectix Insulation Wrapped in Underbelly
- 3 PEX Water Lines - Enclosed and Insulated
- 4 Direct Heating to Underbelly from Furnace

ROOF CONSTRUCTION

- 1 One-Piece EPDM Rubber Roof - 12 Year Mfg. Warranty
- 2 3/8" Roof Decking
- 3 Reflectix Insulation
- 4 Welded Aluminum 5" Truss Roof Studs - 16" on center
- 5 Dual Layer of Fiberglass Insulation
- 6 Decorator Ceiling Vinyl
- 7 15,000 BTU Roof Ducted A/C
- 8 "Oval-Air" Aluminum Wrapped A/C Ducting System

- 9 Radius Roof Transition Molding
- 10 Roof Attic Vents

CHASSIS & SUSPENSION

- 1 Heavy Duty Drop Frame I-Beam Chassis
- 2 Maxx Garage Pass Thru Storage
- 3 Power Rear Stabilizer Jacks
- 4 Hydraulic Front Jacks with Adjustable Snap Jack Pins
- 5 Dual 30 Lbs. L.P. Bottles
- 6 Trail Air® Equa Flex Suspension System with Easy Lube Axles and Quad Shock Absorbers
- 7 8-Lug 16" Aluminum Wheels with Radial Tires
- 8 7,000 Lb. Axles
- 9 Extended Hitch King Pin

OPTIONAL FEATURES

- Central Vacuum with Toe Kick Dust Pan
- Fireplace with Integrated Heater (Mandatory 3470, 3750 & 3870)
- Residential Convection Microwave Oven
- 12 Cubic Foot Four Door Refrigerator (N/A 3000RL & 3250RL) (Std on 3750 & 3870)
- Ultra Heat Tank Pads - 12 Volt
- 24" Bedroom TV
- Queen Bed (Std on 3250)
- Queen Bed w/Nightstands (N/A 3250)
- Generator Prep
- Generator - Onan 5.5 kw Marquis Gold LP
- Second A/C
- Heat Pump with 15,000 BTU A/C
- Exterior Entertainment Center with 26" TV and CD/DVD AM/FM Tuner (3750 Only)
- Dual Straight Sofas with 1 Recliner (3750 Only)
- Dual Pane Safety Glass Windows
- MAXX Bathroom Fan w/Rain Sensor (Mandatory 3750 & 3870)
- MAXX Bedroom Fan w/Rain Sensor
- Marine Grade Gel Coat Fiberglass Exterior (Only Available with Full Body Paint)
- Slide Out Awning Toppers
- Color Match Hitch Cover
- Trail Air-Tri Glide Pin Box (N/A w/Color Match Hitch Cover)
- Level Up 6 Point Automatic Leveling System
- Good Year Load Range "G" Tires
- Residential Ottoman
- Roll Away Kitchen Island Base (3250 & 3870 Only)

OPTIONAL PAINT



Platinum



Sand



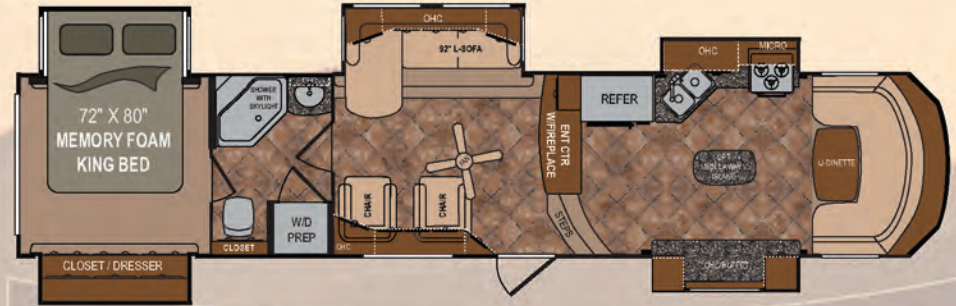
Cabernet



3850RL

Unloaded Weight (lbs) 11,775
 Hitch Weight (lbs) 2,470
 Cargo Capacity (lbs) 3,725
 Overall Height w/AC 12' 11"
 Overall Length 38' 6"

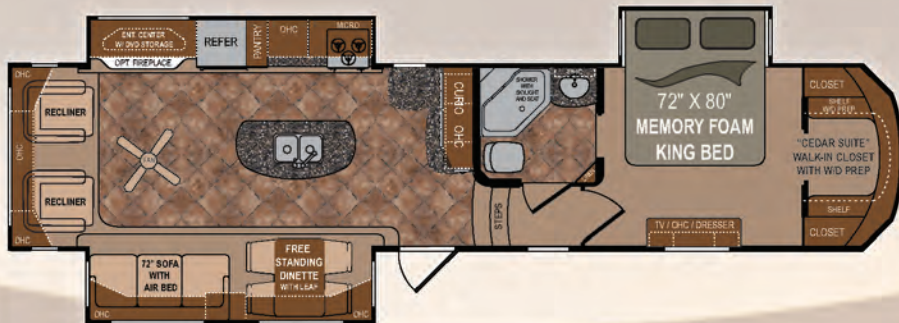
Fresh Water Tank(s) 69
 Black Water Tank(s) 48
 Grey Water Tank(s) 96
 Furnace BTU Output 40,000



3870FK

Unloaded Weight (lbs) 12,516
 Hitch Weight (lbs) 2,454
 Cargo Capacity (lbs) 2,984
 Overall Height w/AC 12' 10"
 Overall Length 41' 6"

Fresh Water Tank(s) 69
 Black Water Tank(s) 48
 Grey Water Tank(s) 144
 Furnace BTU Output 40,000



3570RL

Unloaded Weight (lbs) 11,695
 Hitch Weight (lbs) 2,472
 Cargo Capacity (lbs) 3,805
 Overall Height w/AC 12' 11"
 Overall Length 38' 7"

Fresh Water Tank(s) 69
 Black Water Tank(s) 48
 Grey Water Tank(s) 96
 Furnace BTU Output 40,000



3750FL

Unloaded Weight (lbs) 12,143
 Hitch Weight (lbs) 2,423
 Cargo Capacity (lbs) 3,357
 Overall Height w/AC 12' 11"
 Overall Length 40' 2"

Fresh Water Tank(s) 69
 Black Water Tank(s) 48
 Grey Water Tank(s) 96
 Furnace BTU Output 40,000

DECOR CHOICES

Sand

Sahara

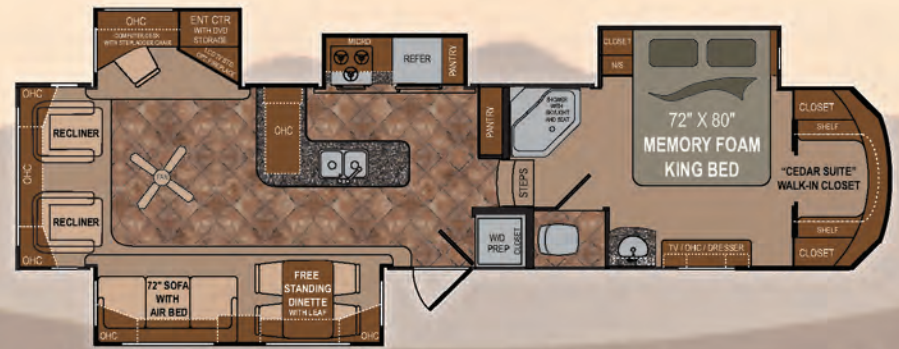
Onyx



3250RL

Unloaded Weight (lbs) 10,941
 Hitch Weight (lbs) 2,474
 Cargo Capacity (lbs) 4,559
 Overall Height w/AC 12' 11"
 Overall Length 35' 8"

Fresh Water Tank(s) 69
 Black Water Tank(s) 48
 Grey Water Tank(s) 96
 Furnace BTU Output 40,000



3400RL

Unloaded Weight (lbs) 11,992
 Hitch Weight (lbs) 2,497
 Cargo Capacity (lbs) 3,508
 Overall Height w/AC 12' 11"
 Overall Length 38' 1"

Fresh Water Tank(s) 69
 Black Water Tank(s) 48
 Grey Water Tank(s) 96
 Furnace BTU Output 40,000



3470RE

Unloaded Weight (lbs) 12,221
 Hitch Weight (lbs) 2,546
 Cargo Capacity (lbs) 3,279
 Overall Height w/AC 12' 11"
 Overall Length 38' 3"

Fresh Water Tank(s) 69
 Black Water Tank(s) 48
 Grey Water Tank(s) 96
 Furnace BTU Output 40,000



3520MS

Unloaded Weight (lbs) 11,829
 Hitch Weight (lbs) 2,440
 Cargo Capacity (lbs) 3,671
 Overall Height w/AC 12' 11"
 Overall Length 38' 2"

Fresh Water Tank(s) 69
 Black Water Tank(s) 48
 Grey Water Tank(s) 48*
 Furnace BTU Output 40,000
 *Additional 48 with W/D Prep



3000RL

Unloaded Weight (lbs) 10,983
 Hitch Weight (lbs) 2,014
 Cargo Capacity (lbs) 4,533
 Overall Height w/AC 12' 11"
 Overall Length 34' 8"

Fresh Water Tank(s) 69
 Black Water Tank(s) 48
 Grey Water Tank(s) 96
 Furnace BTU Output 40,000



3640RL

Unloaded Weight (lbs) 12,345
 Hitch Weight (lbs) 2,216
 Cargo Capacity (lbs) 3,155
 Overall Height w/AC 12' 11"
 Overall Length 40' 1"

Fresh Water Tank(s) 69
 Black Water Tank(s) 48
 Grey Water Tank(s) 96
 Furnace BTU Output 40,000

Infinity STANDARD FEATURES

EXTERIOR FEATURES

"ALUMA LAM" Construction

- 6 sided welded aluminum cage construction
- 5 way lamination- walls and floor
- 3" welded aluminum bath deck with Darco underbelly
- Gel coat high gloss laminated fiberglass sidewalls
- 2" thick vacuum bond laminated sidewalls
- 3" thick vacuum bond laminated floor

"Convenience Docking Station"

- Gravity water fill, city water fill, cable, satellite and phone hookups.
- Exterior shower, black tank flush, water heater bypass, winterization valve, light & dump valves.

"LCI ONE" Chassis System

- Lippert 10" heavy duty drop rail Z frame chassis
- Lippert 7,000 lb. Super Lube axles
- Trail Air® Equa-Flex suspension
- Quad shock absorbers
- Four wheel electric brakes
- 16" 8 lug aluminum rims
- 16" radial tires
- Lippert extended pin box
- Hydraulic front landing gear
- Auto adjust electric rear stabilizer jacks
- Hydraulic slide rooms (most models)
- Independent selector valves for slide rooms
- 5-function wireless LED remote control
- Quad step at entry

"Grand Canyon" Package

- Exterior Stereo with mp3 connection
- Frameless windows
- Cavernous exterior pass through garage storage
- 10" heavy duty stacked Z rail chassis
- Industrialized non skid rubber flooring
- Lined garage walls and bath deck
- TV prep with backer and cable jack
- 30" x 76" Entry door with welcome home light
- Large power awning with remote control

INTERIOR FEATURES

"Platinum" Package

- Antique hand rubbed glazed cherry cabinetry
- Solid cherry stiles and slide room fascia
- Stainless steel microwave and oven
- Hidden hinges
- Solid surface counter tops
- Undermount stainless steel galley sink
- Residential cherry wood blinds
- Crown molding
- Designer window treatments
- Radius interior bedroom ceiling
- Beauflor® flooring
- Premium carpet with pad
- One piece fiberglass shower with seat
- Large molded lavatory sink
- Residential style padded headboard
- "Comfort Zone" king size memory foam mattress (N/A on 3250)
- Quiet zone ducted 15,000 BTU air conditioner

"Platinum" Package (continued)

- Digital smart dual zone thermostat
- 12 gallon DSI gas/electric water heater
- Cedar suite walk in closet with shelf and bench (most models)
- Accented slide room walls

"Glacial" Package

- R-Value - roof R-40, floor R-40, walls R-9, slide room floor R-24
- Enclosed heated and insulated underbelly and storage area
- Enclosed and heated tanks
- Flex foil insulation in roof, underbelly and slides
- 40,000 BTU furnace with forced air heat

Follow "DutchmenRV" on



"Media Center"

- 32" or 40" Samsung LCD high definition TV (floor plan specific)
- Samsung 5.1 Surround sound with DVD and iPod hook up
- Satellite prep, cable and HD TV antenna
- TV and surround sound compatible to use with 1 remote
- Dual swivel x-large gliding rocker recliners (N/A on 3750)
- Optional 24" TV in bedroom
- Exterior TV prep in storage compartment



"EXTREME WEATHER" PRESSURIZED RAIN BAY TESTING



Infinity fifth wheels are tested in a state-of-the-art pressurized rain bay. Units are drenched with pressurized water sprayed on all sides of the coach to simulate the harshest weather conditions. All units are tested with slides in the in and out position, with over 4000 gallons of water used in each test to assure a water tight unit.



REAL WEIGHTS!

Did you know that every Infinity is weighed at the factory as it leaves the production line? Our certified Acu-Weight includes options! Most competitors publish only a base weight that does not include options. Make sure that you know what the "REAL" weight of the unit is before you buy your next fifth wheel.

InfinityRV.com



PO BOX 2164 • 2164 Caragana Court • Goshen, Indiana 46527
Sales: 574.537.0600 Fax: 574.975.0626 • www.DUTCHMEN.com

Your Local Dealer

