

KODIAK

Where Ultra-Lite Meets Luxury

DSI
18th Annual RVDA DEALER
SATISFACTION INDEX

KODIAK



KODIAK





Kodiak - the leader in Ultra-Lite technology - features innovative floor plans ranging from 16' to 31'. With units light enough to be towed by SUVs, minivans, crossover vehicles and light trucks, we are sure to have the model that best fits your family's needs.

Just because Kodiak is an Ultra-Lite, it doesn't mean your trailer is light on storage. With spacious countertops, cabinet space and oversized pass-through exterior storage, it's easy to take everything along on your next adventure.

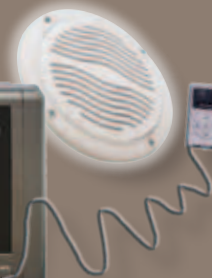


Kodiak Ultra-Lite
Model 279RBSL in Buckshot



Premium Entertainment System

Kodiak's premium entertainment system features an AM/FM /CD/DVD player with MP3 input. Interior and exterior speakers are also included. The flat screen LCD HD TV is an optional feature.



Central Control Station

All switches and monitor panel centrally located for easy use.





Kodiak Ultra-Lite
Model 284BHSL

Kodiak's all new custom cabinetry design increases storage space by over 40%. Overhead cabinets are wider, taller and deeper.

Plus our exclusive countertop design offers more usable space than the competition!

Solid Surface countertop with stainless steel sink and pull out faucet. Extra deep storage drawers, dedicated pots & pans storage plus full extension steel roller ball bearing drawer guides are standard on Kodiak.



Kodiak Ultra-Lite
Model 284BHSL



Large hanging wardrobe space, dual reading lights, upgraded Evergreen™ mattress and a designer bedding package is standard with Kodiak.



Bunk Room
Model 300BHSL

Quad bunk with full dinette, and hanging wardrobe with three full size drawers.



Bath
Model 279RBSL

Spacious bathroom with large bath tub, shower surround and sliding glass doors, large linen closet and skylight.





Aerodynamic Profile

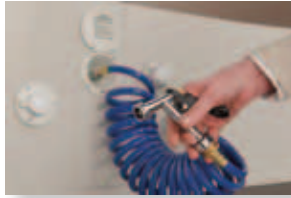


Ultra -Lite Design Better Fuel Economy

Kodiak is specifically designed to be towed by most light trucks and sport utility vehicles. The aerodynamic profile is designed to push air up the front wall and over the roof to improve towing and fuel economy.



Detachable Power Cord



Spray Port



Real Weights!

Did you know... that every Kodiak is weighed at the factory as it leaves the production line? Our certified Acu-Weight includes options!

Most competitors publish only a base weight that does not include options. Make sure that you know what the "real" weight of the unit is before you buy your next Ultra-Lite trailer.

Enclosed and Heated Underbelly

Kodiak's enclosed and heated underbelly protects your water tanks and floor from damage while traveling. Plus, the underbelly is heated to prevent tanks from freezing.



Popular Options

Aluminum Rims



Flat Screen HDTV



Front Jack



Slam Latch Doors



Bear Cave Storage

Kodiak's Bear Cave Storage is the largest in the Ultra-Lite products. The pass-through V-shaped cargo compartment increases storage by 30 percent.

Bear Cage Construction

Decor Choices



**6 WAY
WELDED ALUMINUM
SUPER STRUCTURE**

**5 WAY
LAMINATION**

ROOF - 5" THICK TRUSS STYLE ALUMINUM FRAME CONSTRUCTION

- 1 TPO Roof with 12 Year Manufacturer's Warranty
- 2 Luan Wood Backer
- 3 Tubular Aluminum Welded Framed Roof
- 4 High Density Structural Foam
- 5 Decorative Ceiling Finish
- 6 13,500 BTU Roof Ducted A/C
- 7 A/C Ducting System with Taped Seams

FLOOR - FULLY LAMINATED WELDED ALUMINUM FRAME CONSTRUCTION

- 1 Residential Carpeting in Slide Room
- 2 Beauflor Flooring -10 Year Warranty
- 3 Dual Layers of Floor Decking
- 4 Tubular Welded Aluminum Framed Floor
- 5 High Density Structural Foam
- 6 Polypropylene Waterproof Vapor Barrier

CHASSIS - STEEL I-BEAM POWDER COATED CHASSIS

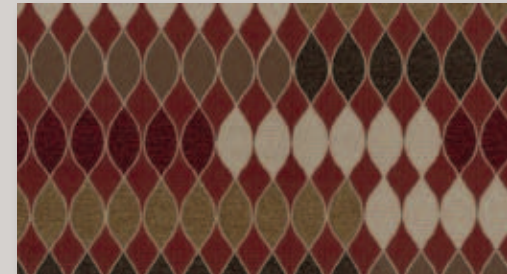
- 1 Folding Entry Steps
- 2 Four Corner Stabilizer Jacks
- 3 Large Heated Tanks Mounted Below Floor
- 4 "Polar Package" Enclosed and Heated Underbelly (N/A Express)
- 5 Radial Tires
- 6 Easy-Lube Hubs
- 7 LP Tanks with ABS Cover

WALLS - FULLY LAMINATED, WELDED ALUMINUM FRAME CONSTRUCTION

- 1 High Gloss Fiberglass Exterior
- 2 Luan Wood Backer
- 3 Tubular Aluminum Welded Frame Walls
- 4 High Density Structural Foam Insulation
- 5 Decorative Wall Finish
- 6 Tinted Safety Glass Windows
- 7 Insulated Baggage Doors with Slam Latches (N/A Express)
- 8 TPO Fender Skirts
- 9 XL-Folding Entry Assist Handle (N/A Express)
- 10 Aerodynamic Front Profile for Better Fuel Economy
- 11 Diamond Plate Rock Guard
- 12 Adjustable Power Awning



Peppercorn



Buckshot



Rullio Eggplant



Bear's Den Expandable Tent Ends



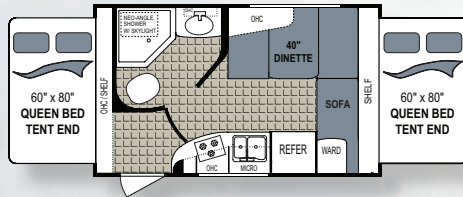
Kodiak's Bear's Den Tent Ends feature increased headroom and sleeping space.

A full 60" x 80" mattress is a standard feature.

Tent ends feature a 1200 pound capacity.

Expandable

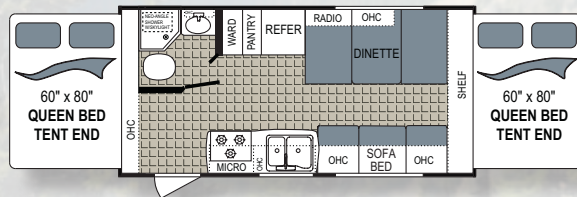
161E



Unloaded Weight (lbs) 3,086
Hitch Weight (lbs) 426
Cargo Capacity (lbs) 664
Overall Height w/AC 9' 10"
Overall Length 17' 9"

Fresh Water Tank(s) 52
Black Water Tank(s) 28
Grey Water Tank(s) 39
Furnace BTU Output 19,000

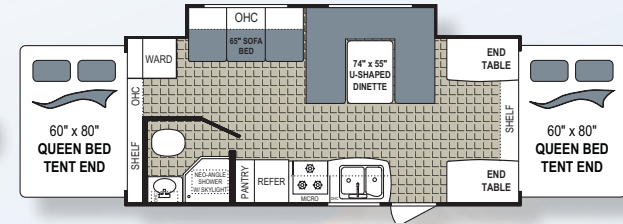
181E



Unloaded Weight (lbs) 3,520
Hitch Weight (lbs) 324
Cargo Capacity (lbs) 1,480
Overall Height w/AC 9' 10"
Overall Length 20' 8"

Fresh Water Tank(s) 52
Black Water Tank(s) 22
Grey Water Tank(s) 39
Furnace BTU Output 19,000

210ES

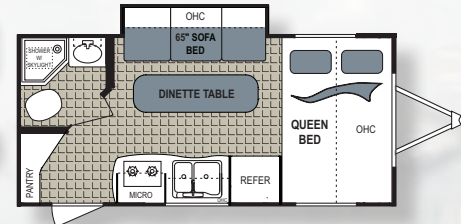


Unloaded Weight (lbs) 4,092
Hitch Weight (lbs) 498
Cargo Capacity (lbs) 1,408
Overall Height w/AC 9' 10"
Overall Length 23' 11"

Fresh Water Tank(s) 52
Black Water Tank(s) 22
Grey Water Tank(s) 39
Furnace BTU Output 19,000

7' Wide

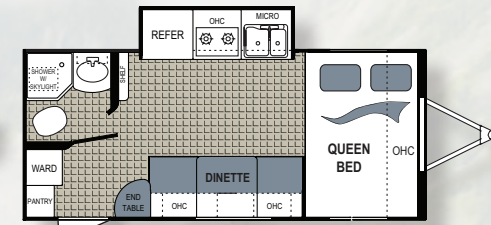
167QBSL



Unloaded Weight (lbs) 3,254
Hitch Weight (lbs) 290
Cargo Capacity (lbs) 1,446
Overall Height w/AC 9' 10"
Overall Length 19' 7"

Fresh Water Tank(s) 52
Black Water Tank(s) 22
Grey Water Tank(s) 39
Furnace BTU Output 19,000

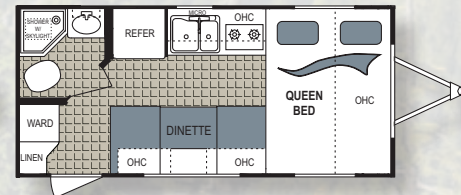
177QBSL



Unloaded Weight (lbs) 3,254
Hitch Weight (lbs) 266
Cargo Capacity (lbs) 1,446
Overall Height w/AC 9' 10"
Overall Length 20' 5"

Fresh Water Tank(s) 52
Black Water Tank(s) 22
Grey Water Tank(s) 39
Furnace BTU Output 19,000

187QB

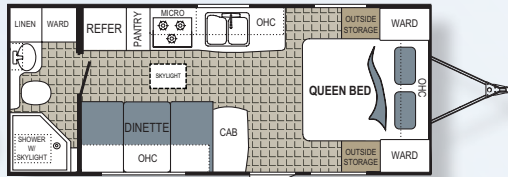


Unloaded Weight (lbs) 2,906
Hitch Weight (lbs) 222
Cargo Capacity (lbs) 1,794
Overall Height w/AC 9' 10"
Overall Length 19' 2"

Fresh Water Tank(s) 52
Black Water Tank(s) 22
Grey Water Tank(s) 39
Furnace BTU Output 19,000

8' Wide

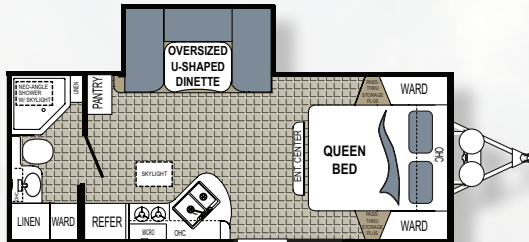
200QB



Unloaded Weight (lbs) 3,874
 Hitch Weight (lbs) 322
 Cargo Capacity (lbs) 1,526
 Overall Height w/AC 10'
 Overall Length 24' 2"

Fresh Water Tank(s) 52
 Black Water Tank(s) 28
 Grey Water Tank(s) 39
 Furnace BTU Output 19,000

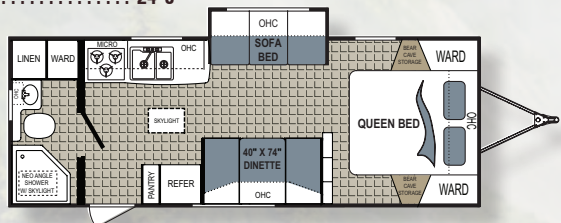
221RBSL



Unloaded Weight (lbs) 4,604
 Hitch Weight (lbs) 572
 Cargo Capacity (lbs) 1,396
 Overall Height w/AC 10' 7"
 Overall Length 24' 8"

Fresh Water Tank(s) 52
 Black Water Tank(s) 28
 Grey Water Tank(s) 39
 Furnace BTU Output 19,000

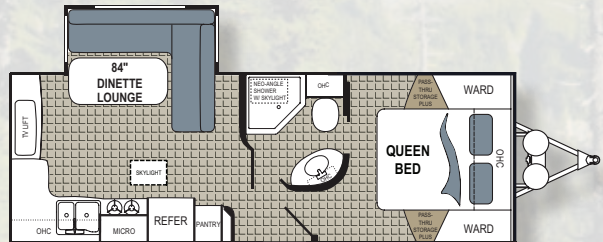
241RBSL



Unloaded Weight (lbs) 4,412
 Hitch Weight (lbs) 396
 Cargo Capacity (lbs) 1588
 Overall Height w/AC 10'
 Overall Length 27' 2"

Fresh Water Tank(s) 52
 Black Water Tank(s) 28
 Grey Water Tank(s) 39
 Furnace BTU Output 19,000

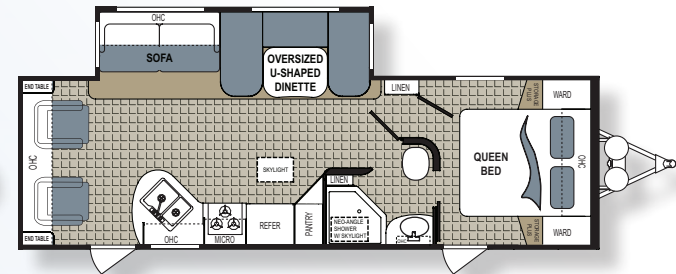
242RESL



Unloaded Weight (lbs) 4,964
 Hitch Weight (lbs) 452
 Cargo Capacity (lbs) 1,636
 Overall Height w/AC 10' 7"
 Overall Length 27' 7"

Fresh Water Tank(s) 52
 Black Water Tank(s) 22
 Grey Water Tank(s) 39
 Furnace BTU Output 30,000

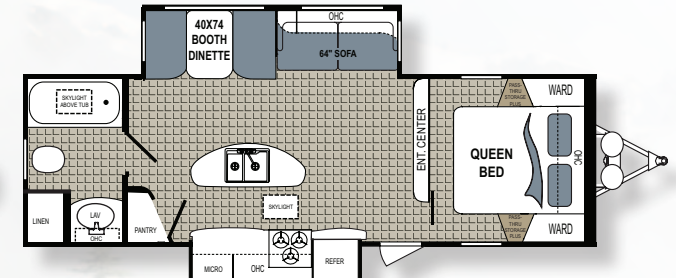
263RLS



Unloaded Weight (lbs) 5,641
 Hitch Weight (lbs) 690
 Cargo Capacity (lbs) 1,959
 Overall Height w/AC 10' 7"
 Overall Length 31'

Fresh Water Tank(s) 52
 Black Water Tank(s) 28
 Grey Water Tank(s) 39
 Furnace BTU Output 30,000

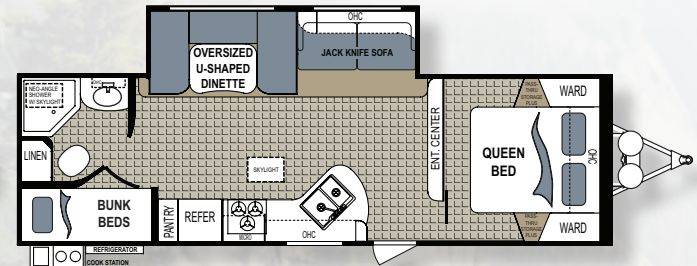
279RBSL



Unloaded Weight (lbs) 6,100
 Hitch Weight (lbs) 772
 Cargo Capacity (lbs) 1,500
 Overall Height w/AC 10' 7"

Overall Length 30' 8"
 Fresh Water Tank(s) 52
 Black Water Tank(s) 28
 Grey Water Tank(s) 67
 Furnace BTU Output 30,000

284BHSL



Unloaded Weight (lbs) 5,708
 Hitch Weight (lbs) 686
 Cargo Capacity (lbs) 1,892
 Overall Height w/AC 10' 7"
 Overall Length 31' 10"

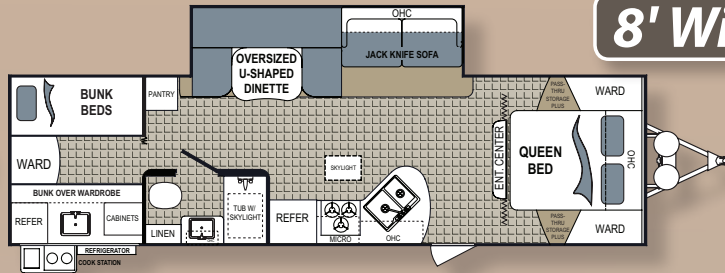
Fresh Water Tank(s) 52
 Black Water Tank(s) 28
 Grey Water Tank(s) 39
 Furnace BTU Output 30,000

FLOOR PLANS START AT ONLY 3000 LBS.

* Fresh water capacity includes water heater

8' Wide (Cont'd)

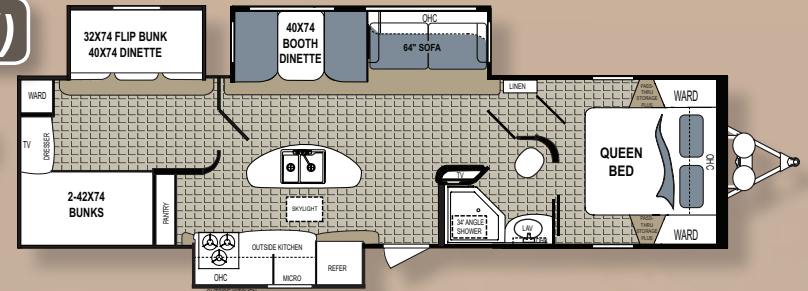
290BHSL



Unloaded Weight (lbs) 5,978
 Hitch Weight (lbs) 756
 Cargo Capacity (lbs) 1,622
 Overall Height w/AC 10' 7"
 Overall Length 33' 4"

Fresh Water Tank(s) 52
 Black Water Tank(s) 28
 Grey Water Tank(s) 39
 Furnace BTU Output 30,000

300BHSL

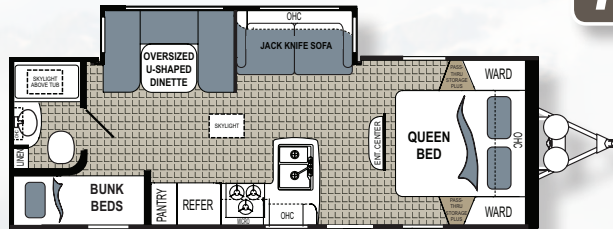


Unloaded Weight (lbs) 7,526
 Hitch Weight (lbs) 833
 Cargo Capacity (lbs) 1,369
 Overall Height w/AC 10' 11"
 Overall Length 36' 11"

Fresh Water Tank(s) 52
 Black Water Tank(s) 28
 Grey Water Tank(s) 67
 Furnace BTU Output 30,000

Kodiak Express

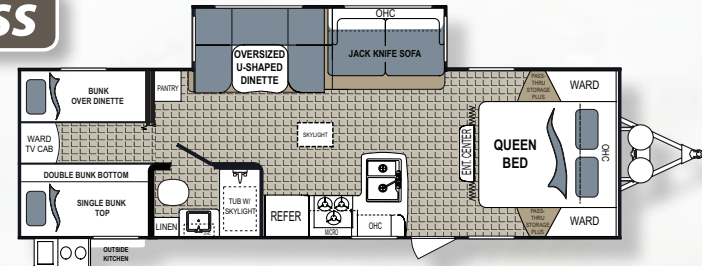
255BHSL



Unloaded Weight (lbs) 4,676
 Hitch Weight (lbs) 493
 Cargo Capacity (lbs) 1,924
 Overall Height w/AC 10' 5"
 Overall Length 28' 4"

Fresh Water Tank(s) 52
 Black Water Tank(s) 28
 Grey Water Tank(s) 39
 Furnace BTU Output 19,000

283BHSL



Unloaded Weight (lbs) 5,346
 Hitch Weight (lbs) 728
 Cargo Capacity (lbs) 1,224
 Overall Height w/AC 10' 7"
 Overall Length 32'

Fresh Water Tank(s) 52
 Black Water Tank(s) 28
 Grey Water Tank(s) 39
 Furnace BTU Output 30,000

283BHSL, Shown with Power Awning and Frameless Windows.

Evergreen™ Mattress, Double Door Refrigerator, Two-Tone Interior Walls with Night Shades.



Model 255BHSL in Peppercorn
 *Shown with Dealer Add Optional HDTV



Vapor Wall
with Sliding Glass Door



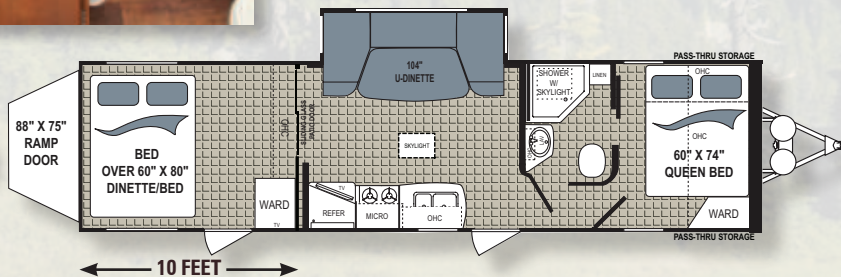
Kodiak Toy Hauler
Model 292TQB in Peppercorn

Toy Hauler



Spring Assist Ramp Door -3000 Lb. Capacity

292TQB



Unloaded Weight (lbs)	6,891
Cargo Capacity (lbs)	2,789
Hitch Weight (lbs)	1,056
Overall Length	35' 6"
Overall Height w/AC	11'
Fresh Water Tank(s)	46
Black Water Tank(s)	28
Grey Water Tank(s)	67
Furnace BTU Output	30,000

STANDARD AND OPTIONAL FEATURES

STANDARD FEATURES

FUEL SAVER FRONT PROFILE

- Aerodynamic Front Profile Designed for Maximum Aerodynamics
- Streamlined Profile Reduces Air Turbulence for a more Stable Ride
- Improves Fuel Efficiency

BEAR CAGE CONSTRUCTION

- 6 Sided Welded Aluminum Cage Construction
- 5 Way Lamination - Roof, Floor, Sidewalls and Rear Wall
- Fully Laminated, Aluminum Framed Roof
- 5" Laminated Crowned Roof with Ducted A/C (8' Wide TT's)
- 2" Thick Aluminum Framed Laminated Roof (7' Wide TT and Expandable)
- High Gloss Gel Coated Filon Fiberglass Exterior (N/A Express)

POLAR PACKAGE

- Heated and Enclosed Underbelly Protects Bottom of Trailer from Road Debris and Damage ←*✦
- Enhances Aerodynamics of Trailer
- Beauflor Flooring - Cold Crack Resistant

EZ LUBE CUSTOM STANCE SUSPENSION

- Heavy Duty Axles
- 4 Wheel Electric Drum Brakes
- Easy Lube Hubs on Axles ←*✦●
- Radial Tires (Required Option) ←*✦●
- 14" Tires (Expandable, 7' Wides, and Express)
- 15" Tires (8' Wides)

BEAR CAVE STORAGE

- Oversized Pass Thru Storage
- Slam Latch Cargo Doors (N/A Expandables and Express)
- Storage Light
- 110V Outlet
- Cable Hookup

ACU-WEIGHT CERTIFICATION

- Real Weights - All Units Weighed before Leaving the Factory
- Weights Include Options - See Decal in Unit for Exact Weight of your Unit

EXTERIOR CONSTRUCTION

EXTERIOR COOK STATIONS

- LP Quick Connect

Follow "DutchmenRV" on



FRAME

- Lightweight I-Beam Frame
- 4" Square Rear Bumper with Sewer Hose Storage
- Dual Battery Tray
- 2 5/16" Coupler
- Hitch Light
- Break-Away Trailer Switch
- Heavy Duty Safety Chains
- Four Corner Stabilizer Jacks ←*✦●
- 12V Electric Slide-Out Motor with Override
- Spare Tire with Cover ←*✦●
- Two 20 Lb. Lp Bottles with ABS Cover
- Double Folding Entry Step

ROOF

- FULLY Laminated, Aluminum Framed Roof
- One-Piece TPO Roof
- Rain Gutter with Extended Corner Downspouts

VIEW MASTER WINDOWS

- Large Picture Windows at Dinette
- Tinted, Radius Corner, Frameless Windows

OTHER EXTERIOR FEATURES

- Large Adjustable Power Awning ←*✦●
- Diamond Plate Rock Guard ←*✦●
- Molded Fender Skirts (8' Wide TT's and Expandables)
- Exterior Wash Station with Quick Connect Hose (N/A Express)
- Deluxe Folding Entry-Assist Handle at Door (8' Wide TT's) *
- 120V Exterior Outlet
- Radius Corner Entry Door
- Flush Combo Entry Latch/Dead Bolt Lock
- Exterior Security Light

INTERIOR FEATURES

STORE MORE CABINETRY

- New Cabinet Design - More Storage Space - Full Access Cabinets, Larger Drawers
- Glazed Cherry Finish Hardwood Cabinet Door and Drawer Fronts Throughout
- Large Galley Storage Pantry (See Floor Plans for Availability)
- Large Pots and Pan Storage (See Floor Plans for Availability)
- Solid Wood Drawers with Full Extension Drawer Glides

SOLID SURFACE COUNTER TOPS MANDATORY

- Stainless Steel Under Mount Sink (N/A Express)
- High Rise Faucet

MEDIA CENTER PREMIUM ENTERTAINMENT SYSTEM

- TV Prep - All Models
- 12V AM/FM/CD/DVD Stereo with MP3 Input ←*✦
- Interior And Exterior Speakers ←*✦●
- TV Antenna
- Wired for Cable/Satellite prep
- Bedroom TV Prep for Flat Panel TV's

CENTRAL CONTROL STATION

- Convenient Location for Main Switches and Monitor panel
- Slide Out Controls
- Water Pump Switch
- Interior and Exterior Light Switches
- Water Heater Controls
- (Control Station N/A 7' Wide Models)

OTHER INTERIOR FEATURES

- Residential Furniture Design With High Grade Fabrics
- 74" X 54" Oversized U-Shaped Dinette - (See Floor Plans)
- Fabric Night Shades throughout (8' Wide TT's) ←*✦●
- Designer Window Treatments
- Designer Wall Border
- Stainless Steel Sink (N/A Express)
- Systems Monitor Panel
- Fire Extinguisher ←*✦●
- LP/Carbon Monoxide/Smoke Detector ←*✦●

BATHROOM FEATURES

- Fiberlink Bathtub or Shower (See Floor Plans)
- Tub/Shower Surround ←*✦●
- Skylight Over Tub/Shower ←*✦●
- Shower Curtain - See Floor Plans
- Glass Shower Door with Neo-angle Shower (See Floor Plans)
- Foot Flush Toilet ←*✦●
- Wood Medicine Cabinet with Mirror
- Power Roof Vent
- Toilet Tissue Holder
- Towel Hooks

BEARS DEN - EXPANDABLE TENT ENDS

- New Tent Design with Self-Supporting Bunk Ends - 1,200 Pound Capacity
- 5" Thick Futon Mattress - Expandables
- Key-Locking "Easy Latch" Tent Doors
- 60" X 80" Beds In Tents
- Bunk End Lights With Fan - Expandables
- Everdream Upgraded Mattress (7' & 8' Wide TT's)

BEDROOM FEATURES - 8 WIDES

- Designer Bedroom Package with Bedspread and Window Treatments
- Roof Vent in Bedroom

APPLIANCES, ELECTRICAL, PLUMBING & LIGHTING

- Double Door 6.3 Cu. Foot Gas/Electric Refrigerator ←*●
- Black Panel Refrigerator Front
- Microwave with Carousel ←*✦●
- 3 Burner Range with 17" Oven (8' Wide TT's and Expandables) ←*✦●
- 2 Burner Cook Top (7' Wide TT's)
- Range Hood With 12V Light and Exhaust Fan
- 13.5K Air Conditioner with Quick Cool Vent ←*✦●
- In-Roof Ducting for A/C (8' Wide TT's)
- Insulated and Foil Wrapped AC Ducting (8' Wide TT's)
- Detachable 30 AMP Power Cord
- 6 Gallon Gas/Electric Water Heater with DSI ←*✦● (Opt Express)
- Water Bypass Kit
- Hot and Cold Water Low Point Drains
- 52 Gallon Fresh Water Tanks (8' Wide TT's and Expandables)
- Solid State Converter with Built-in Battery Charger

OPTIONS

- Aluminum Rims
- Power Front Jack (N/A Express)
- 19", 26" and 32" Flat Screen HD LCD TV (8' Wide TT's)
- 15K AC
- Swing-out Bumper Grill

PACKAGES

- * Ultimate Package
- ✦ Advantage Package
- ← Premium Package
- Express Package



P.O. BOX 2164 Sales: 574.537.0600
2164 Caragana Court Fax: 574.975.6274
Goshen, Indiana 46527 www.Kodiak-RV.com

Your Local Dealer

We are proud to have been selected by the RV Dealers Association as the winner of the 17th Annual DSI Quality Circle Award. Dealers from across North America have awarded us with the honor because of our commitment to producing an innovative product that excels in quality, reliability, warranty and parts support. We are committed to producing the best travel trailers and fifth wheels in the industry. The dealers have voted and have chosen our travel trailers and fifth wheels as the best. We are confident you will too.



Product information is as accurate as possible as of the date of publication of this brochure. Features, floor plans and specifications are subject to change without notice. Please also consult Dutchmen's website at www.DUTCHMEN.com for more current product information and specifications. Tow Vehicle Disclaimer CAUTION: Owners of Dutchmen recreational vehicles are solely responsible for the selection and proper use of tow vehicles. All customers should consult with a motor vehicle manufacturer of their dealer concerning the purchase and use of suitable tow vehicles for Dutchmen products. Dutchmen disclaims any liability or damages suffered as a result of the selection, operations, use or misuse of a tow vehicle. Dutchmen's limited warranty does not cover damage to the recreational vehicle or the tow vehicle as a result of the selection, operation, use or misuse of the tow vehicle.