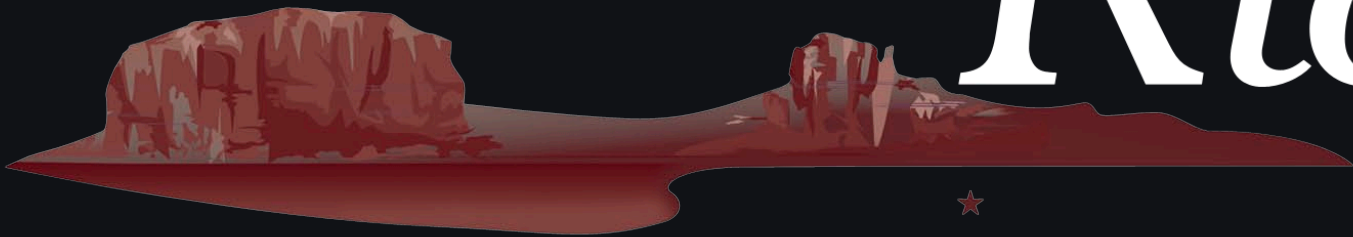


Mesa Ridge



by  OPEN RANGE



Enjoying the Journey.....



SERVICE, PARTS & WARRANTY BUILDING



PLANT TWO



MAIN HEADQUARTERS- PLANT ONE

On a Mission

At Open Range RV, we are on a mission to...

Fulfill the trailer needs of our dealer base and retail customers, and in doing so, exceed their expectations for service, quality and value.

Earn our dealers', retail customers' and employees' long-term loyalty by delivering more than we promise, in a fair and honest business manner.

Motivate our employees to provide exceptional service and quality to our retail customers and dealers.

Compensate our employees fairly and provide opportunity for personal growth within our company.

Although it is our goal to provide a product that exceeds our customer needs and level of quality, we do not strive to be the biggest or the most profitable. In the end, we believe satisfied customers, dealers and employees will bring growth and long term profitability for all.

For almost 30 years, I have had the great fortune to work in the amazing industry of RV manufacturing. This industry runs through my blood and is the passion of my life. This has been a dream come true for me and my family. I would like to thank everyone who believed in us as an RV Manufacturer. At Open Range our motto is ENJOY THE JOURNEY!

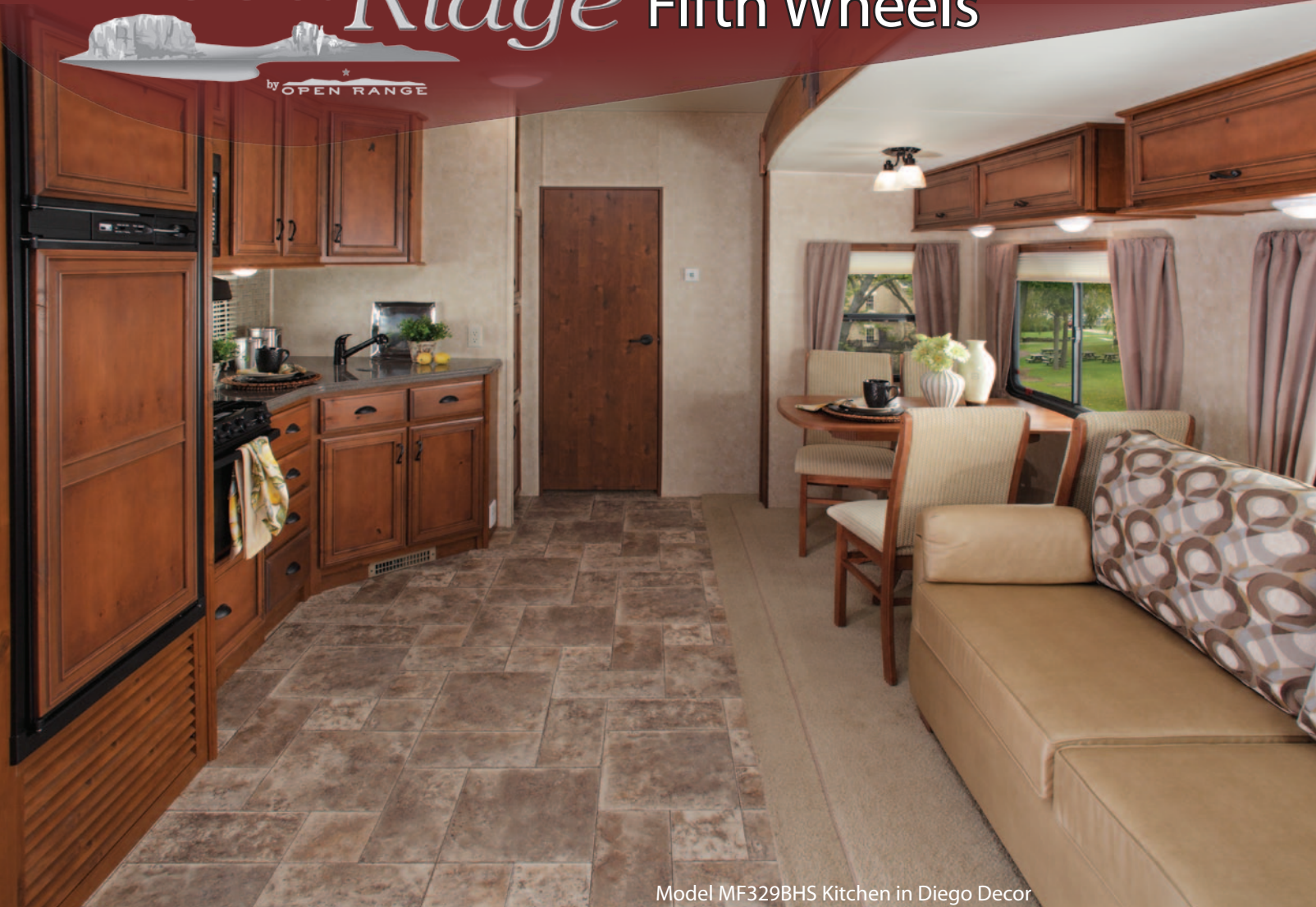
It has been an amazing JOURNEY so far! Come join us on this great JOURNEY, we don't want you to miss another moment of it.

Enjoy the Journey!

A handwritten signature in black ink that reads "Randy Graber". The signature is written in a cursive, flowing style.

Randy Graber, President
Open Range RV Company

Mesa Ridge Fifth Wheels



Model MF329BHS Kitchen in Diego Decor

CORIAN COUNTERTOPS WITH FLUSH MOUNTED SINK COVERS



- Durable Finish for Years of Use
- Nonporous Surface - Easy to Clean
- Easy Repair if Damaged
- Stainless Steel Sink
- Single Lever Pullout Spray Faucet

PULL OUT PANTRY



- Conveniently Placed in Kitchen
- Space Saving Size and Build
- Ball Bearing Guides for Easy Access
- 3-Tiers for Maximum Storage



Model MF329BHS Bedroom in Diego Decor



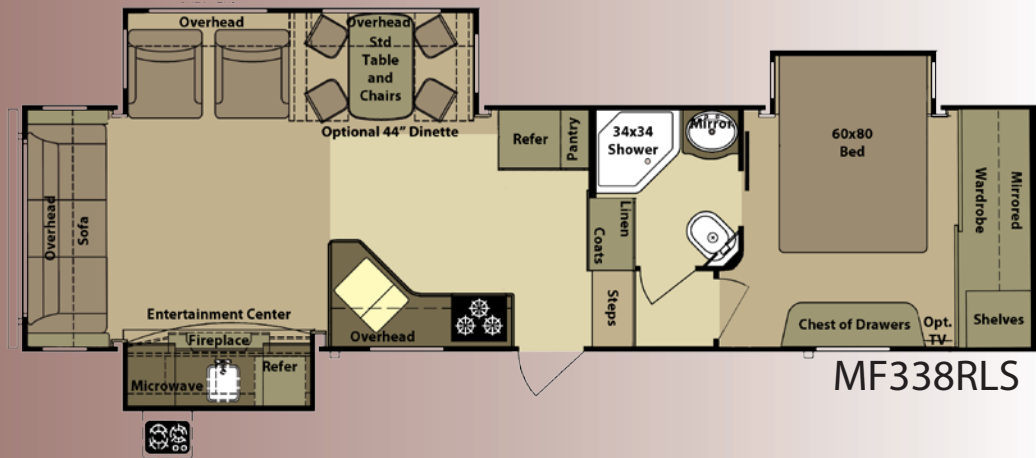
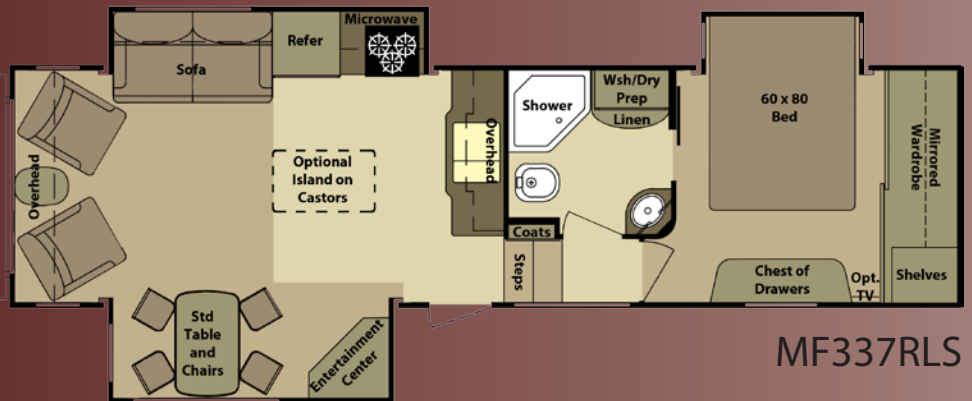
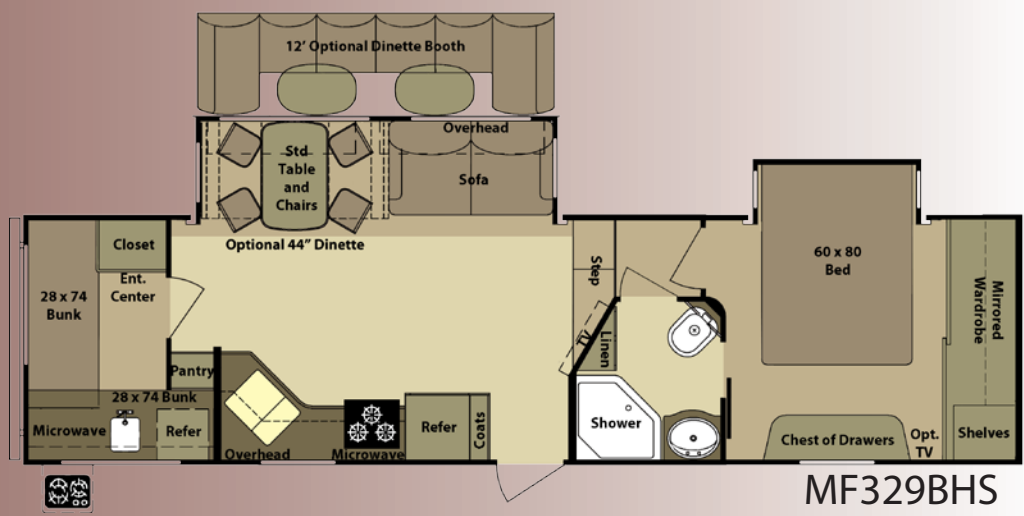
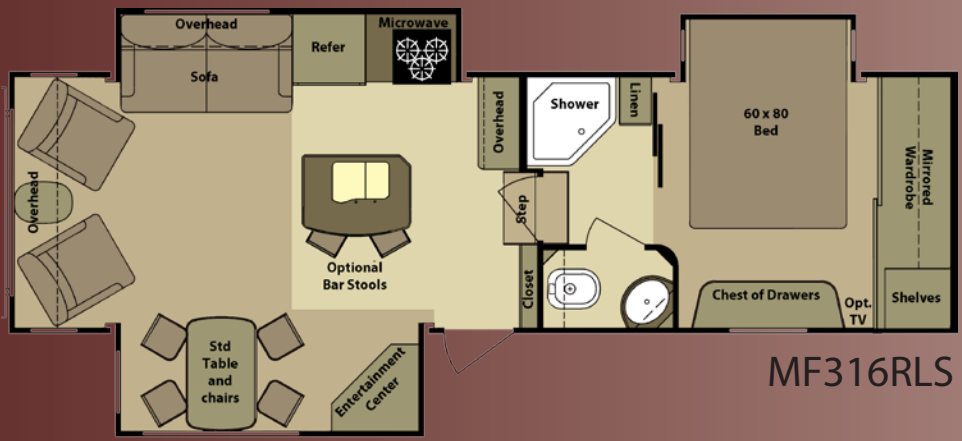
***RADIUS BED BASE WITH
TONS OF STORAGE***

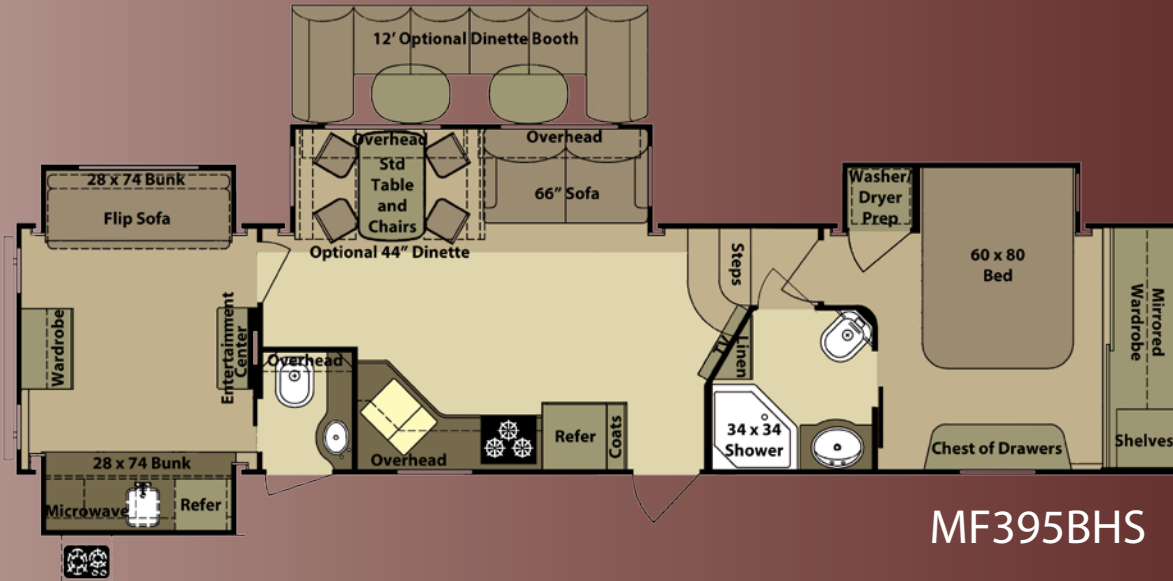
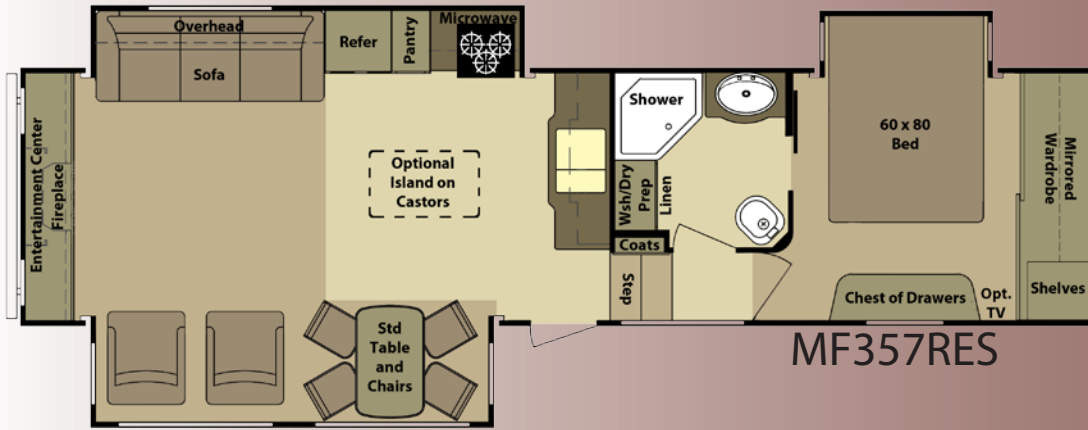
- Easy Lift Strut Assist
- Radius Base for Easy "Walk Around"
- Full Depth Base to Fit all Your Items



Model MF329BHS Bunk House

Fifth Wheel Floorplans





	GVWR	UVW	Hitch Wt.	Axle Wt.	Gross NCC	Ext. Length	Ext. Height	Ext. Width	Water Heater Gas/Elec	Fresh Water	Gray Water	Waste	LP Gas (Lbs)	Furnace (BTU's)	Tire Size	Awning Size
MF316RLS	10790	8945	1990	6955	1845	30'10"	155"	100"	10 Gal	85	82	41	80	35,000	15"/16" opt	19'
MF329BHS	12170	8910	1770	7140	3260	34'	155"	100"	10 Gal	85	82	41	80	35,000	15"/16" opt	18'
MF337RLS	12605	9415	2205	7210	3190	33'6"	155"	100"	10 Gal	85	57	41	80	35,000	15"/16" opt	16'
MF338RLS	12595	9845	2145	7650	2750	35'4"	155"	100"	10 Gal	85	82	41	80	35,000	15"/16" opt	16'
MF357RES	12635	9485	2235	7250	3150	35'2"	155"	100"	10 Gal	85	57	41	80	35,000	15"/16" opt	16'
MF395BHS	TBD	TBD	TBD	TBD	TBD	39'4"	155"	100"	10 Gal	85	74	74	80	40,000	15"/16" opt	16'

Mesa Ridge Travel Trailers



Model MR325B Galley



Model MR325B Bedroom in Bloom Decor

**EXTRA DEEP CHEST
OF DRAWERS**

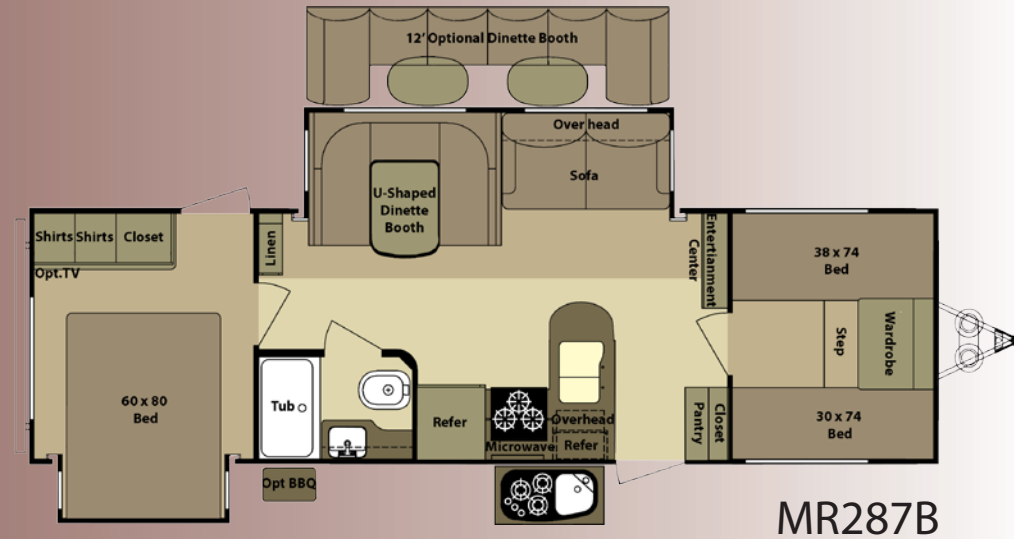
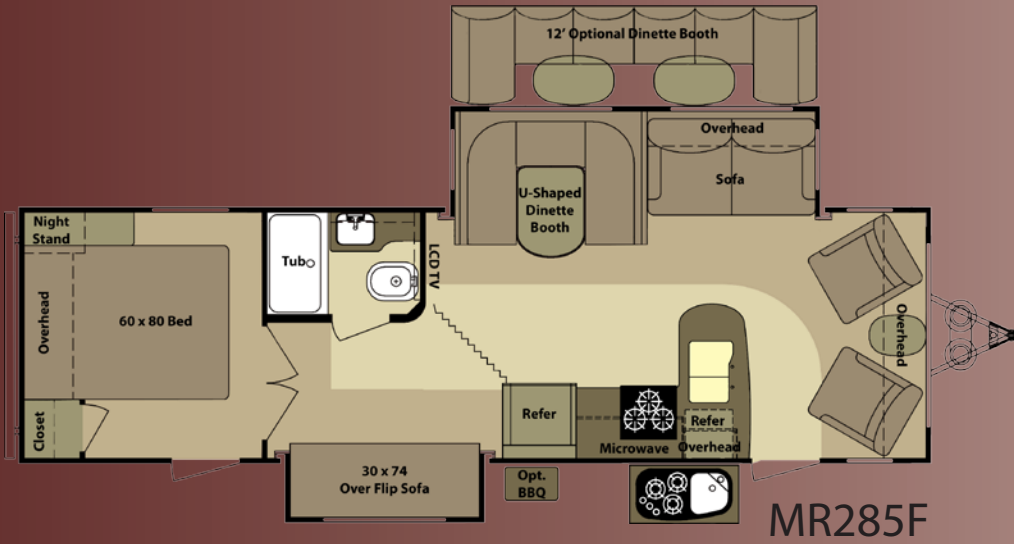
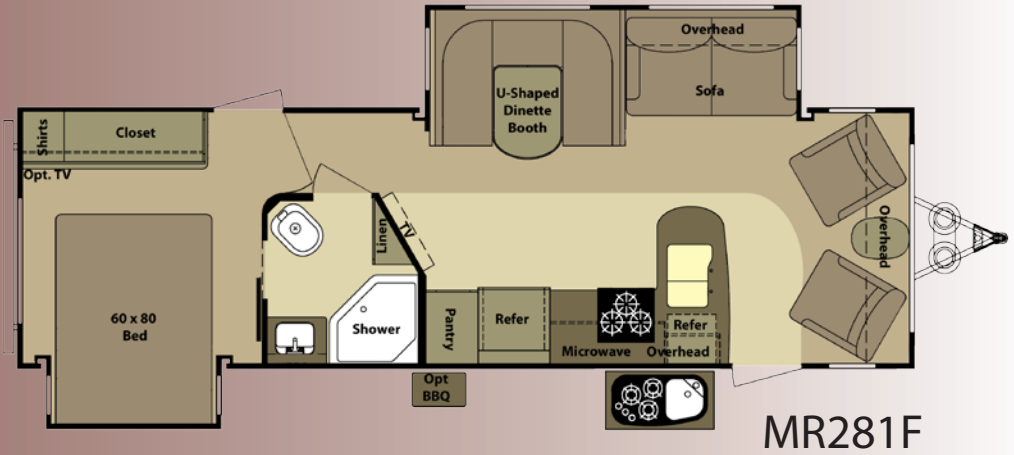
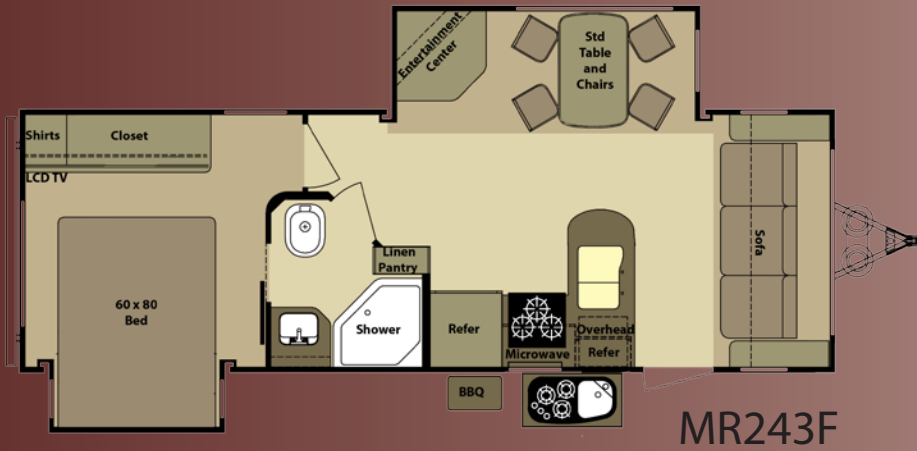
- 100 lb. Ball Bearing Drawer Guides
- Full Extension for Easy Access
- Drawer Bottom Support Brace for Quality that Lasts

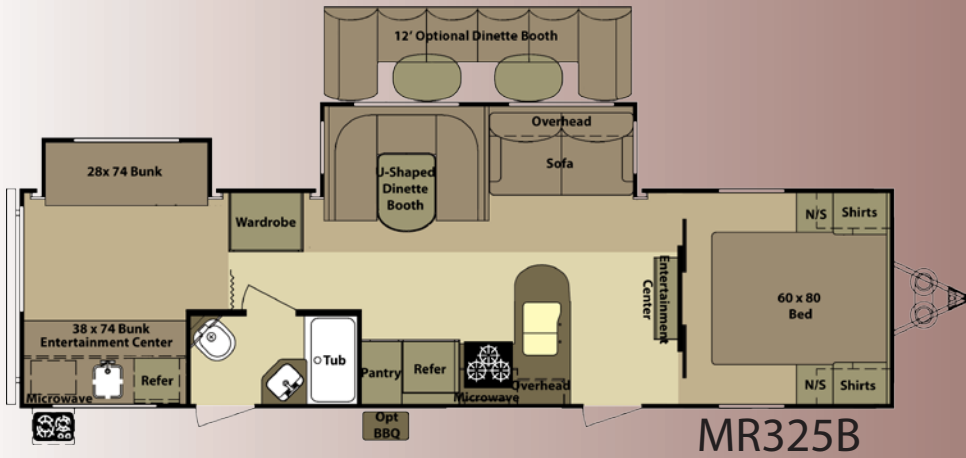
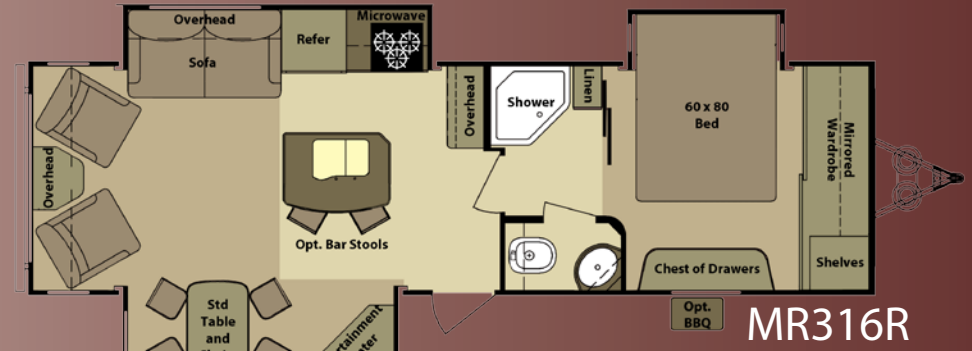


Model MR243F Side Isle Bath

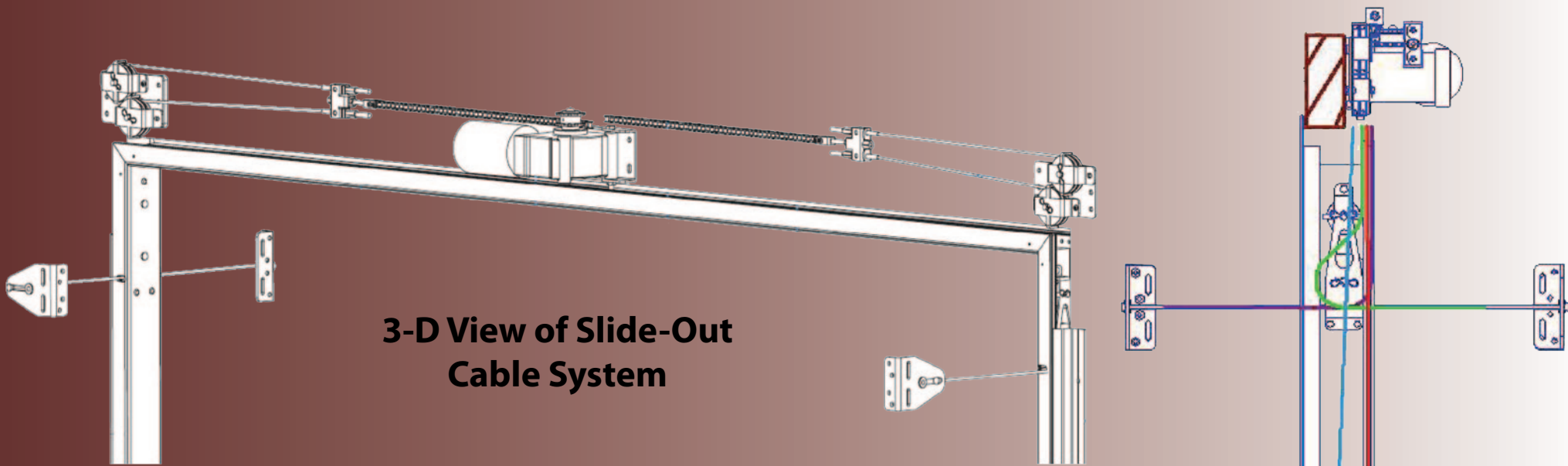


Travel Trailer Floorplans

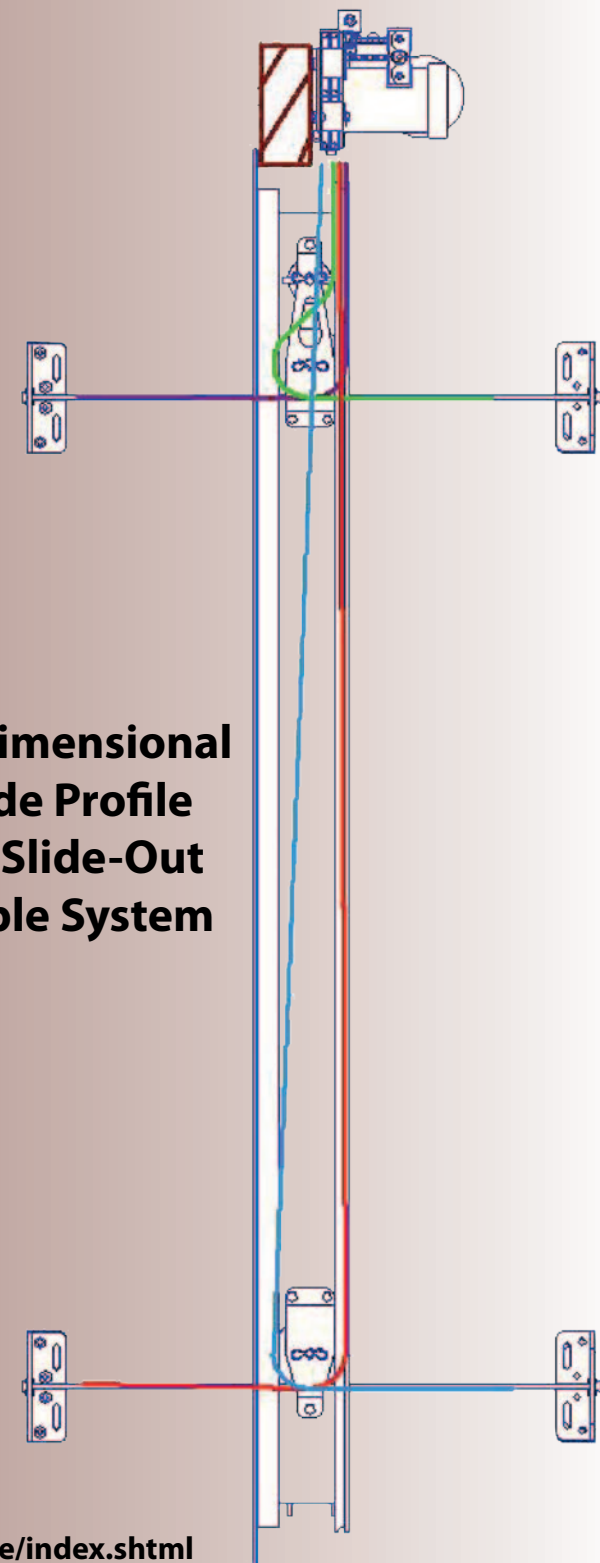




	GVWR	UVW	Hitch Wt.	Axle Wt.	Gross NCC	Ext. Length	Ext. Height	Ext. Width	Water Heater Gas/Elec	Fresh Water	Gray Water	Waste	LP Gas (Lbs)	Furnace (BTU's)	Tire Size	Awning Size
MR243F	8610	6635	850	5785	1975	29'	140"	100"	6 Gal	50	60	30	60	30,000	15"	16'
MR281F	9005	7030	980	6050	1975	32'	140"	100"	6 Gal	50	60	30	60	30,000	15"	16'
MR285F	9160	7185	890	6295	1975	33'	140"	100"	6 Gal	50	60	30	60	30,000	15"	19'
MR287B	9170	7195	665	6530	1975	33'	140"	100"	6 Gal	50	60	30	60	30,000	15"	16'
MR293R	9515	7540	840	6700	1975	34'6"	140"	100"	6 Gal	50	60	30	60	30,000	15"	16'
MR316R	9995	8150	1305	6845	1845	33'8"	140"	100"	6 Gal	50	57	30	60	30,000	15"	19'
MR325B	9680	7705	750	6955	1975	36'8"	140"	100"	6 Gal	50	60	30	60	30,000	15"	19'



3-D View of Slide-Out Cable System

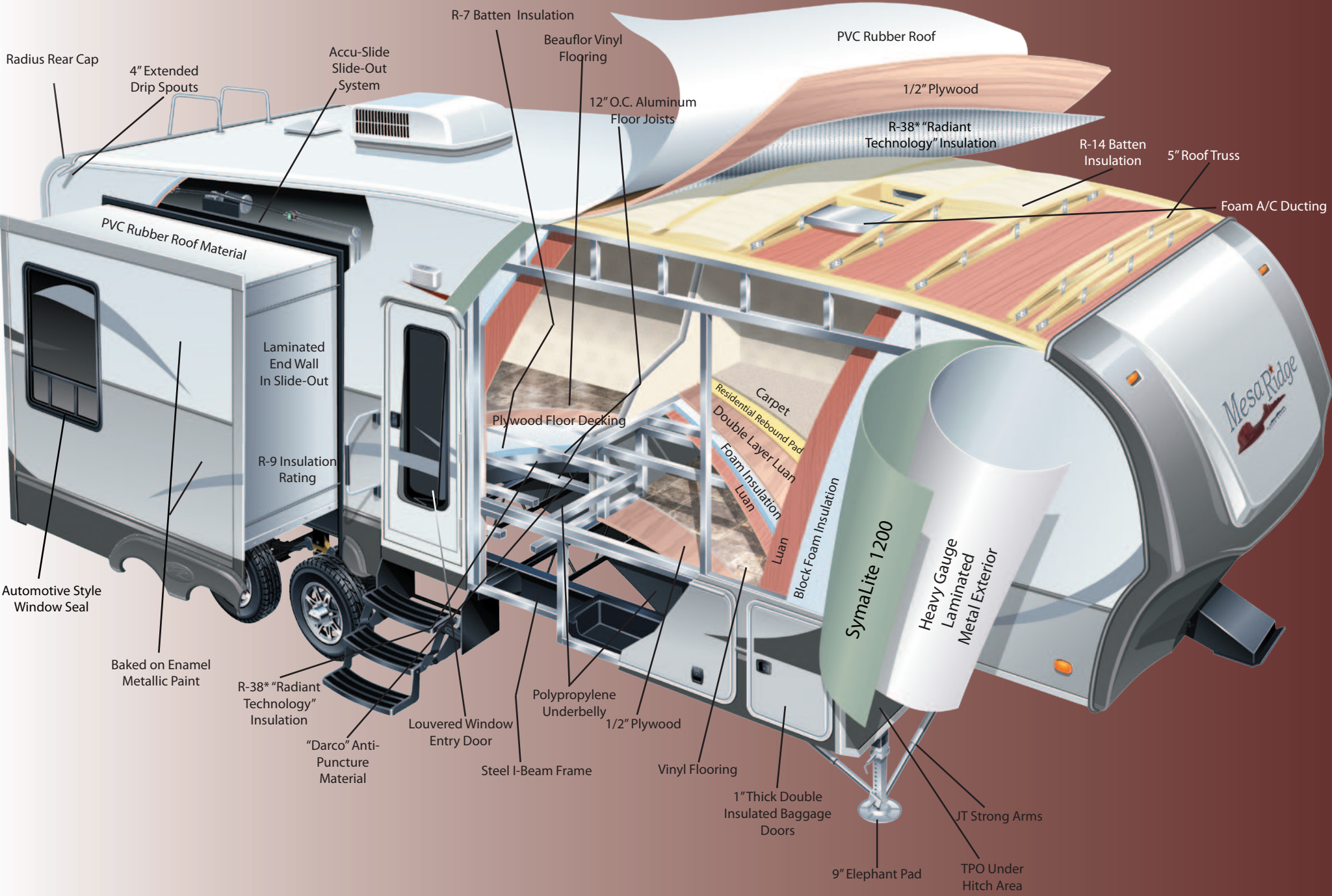


1- Dimensional Side Profile Of Slide-Out Cable System

10 Reasons Why... Accu-Slide

- 1. Above floor design means more storage area for your RV**
- 2. Lightweight design promotes fuel savings**
- 3. High strength stainless steel aircraft cable is used for control**
- 4. Cable control at all 4 room corners helps stop leaks**
- 5. Working components are in your RV, safe from the elements**
- 6. Locking motor secures room in or out to help stop leaks**
- 7. Above floor design minimizes maintenance requirements**
- 8. A clean system - no leaky hydraulic lines or greasy drives**
- 9. Smooth, quiet room movement - no jumping or jerking**
- 10. It's built in the U.S.A. and backed by BAL since 1972**

Construction Cutaway



Interior Construction

100 lb. FULL EXTENSION DRAWER GUIDES



CABINET CONSTRUCTION



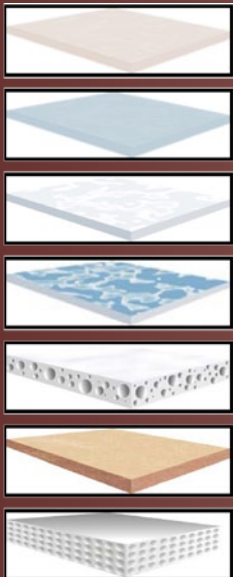
- Face Frames are Tube Drilled and Screwed for Maximum Strength

HARDWOOD CABINET CONSTRUCTION



- Hardwood Cabinet Door Frames & Drawer Faces
- Lumber Core Stiles
- Mortis & Tenon Joints
- Residential Style Hidden Hinges

7-LAYER BEAUFLOL VINYL FLOORING



MORTIS & TENON CABINET CONSTRUCTION



HIDDEN HINGES



- Elegant Euro-Style Spring Loaded Hardware
- Keeps Doors Closed Tightly
- Fully Adjustable to Customize Fit

Exterior Construction

1/2" PLYWOOD ROOF DECKING



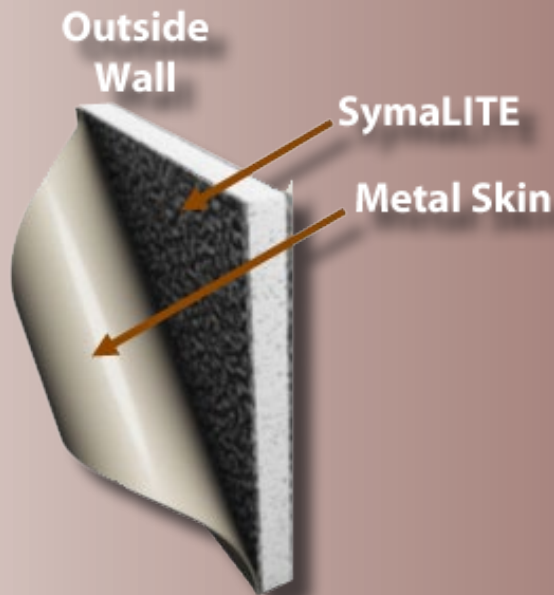
- 1/2" Thick Plywood
- 350 lb. Rating
- Constructed with Real Plywood
- More Durable
- Better Quality

PVC RUBBER ROOF MATERIAL



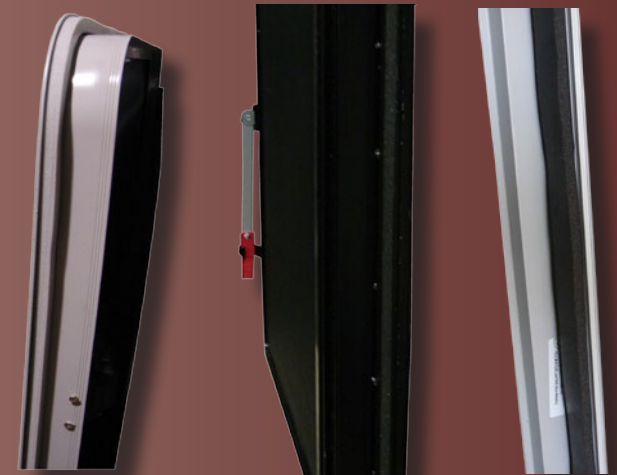
- Ultra Violet Resistant
- No Streaking or Chalking
- No Reconditioning Needed
- 30% Lighter Weight than EPDM Rubber Roof
- Self Extinguishing
- Can be Recycled

SYMALITE 1200 SIDEWALL SUBSTRATE



- Man-Made Composite Technology
- 125% More Puncture Proof
- Additional Insulator
- Noise Reduction
- Moisture, Mold, & Swell Resistant
- Provides the Best Possible Bond with Metal Skin

PVC FOAM SEALS



- At 30% Compression the PVC Foam Seal is 100% Waterproof
- Permanent Seal that Won't Deteriorate
- Provides a Complete and Consistent Seal Throughout

Exterior Features

15,000 BTU Ducted A/C

MAXAIR
LIGHT COOL

50-Amp Service with LED Power Indicator

Compression Latch Baggage Doors

Outside Kitchen
Travel Trailer Only



Carefree
Power Awning

Full View Vented Entrance Door



4" Extended Drip Spout



Equa-Flex Suspension

13,500 BTU Ducted A/C



LP Slide Out Trays



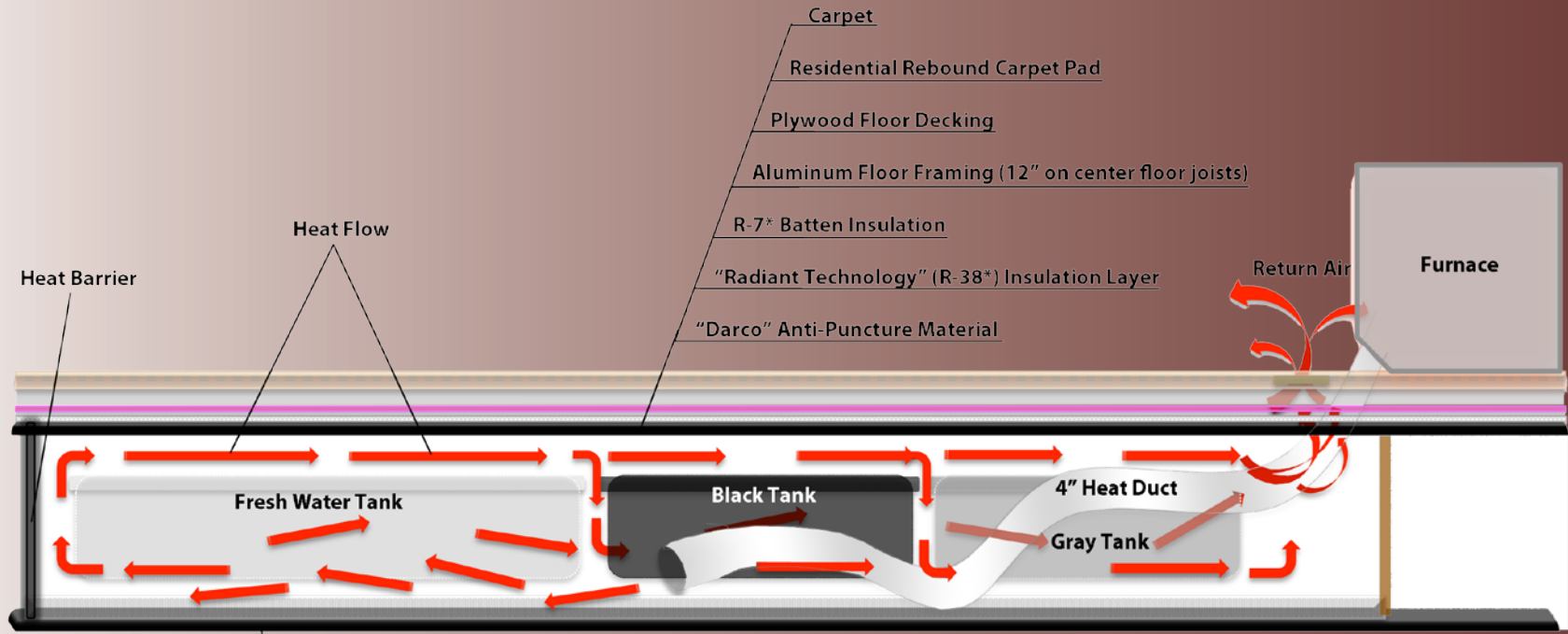
Large Assist Handle



Four Season Protection Package



- Atwood High Performance Furnace
- Heated Storage Area
- Insulated Slide Floors
- Vented Attic
- Double Insulated Baggage Doors
- Digital Thermostat
- Heated Underbelly
- Heated and Enclosed Dump Valves
- R-38 Roof Insulation*
- R-38 Floor Insulation*
- R-9 Sidewalls



Polypropylene Underbelly Layer

*=Calculated

Executive Living Package

Interior:

- Hide-a-Bed Loveseat Sofa
- Large 6 cu ft Refer(TT); 8 cu ft (FW)
- 6 Gal(TT);10 Gal(FW) Gas/Electric Quick Recovery Water Heater
- 13,500 BTU (TT); 15,000 (FW) Ducted A/C
- Fantastic Fan in Kitchen (FW)
- "Comfort Cloud" Pillowtop Mattress
- Pull-Out Pantry (Most Models)

Exterior:

- Power Awning
- 15" 6-Lug Wheels
- Assist Grab Handle
- Outside Cook Center (TT) (Most Models)



Entertainment Package:

- 32" LCD TV
- 12v CD/DVD/MP3/AM/FM/iPod/USB Stereo
- Cable Hook-Up
- Satellite Hook-Up
- Digital TV Antenna and Booster
- Outside TV Hook-Up
- Dual Outside Speakers



Equipped with **JACK[®] DIGITAL HDTV ANTENNA** with Integrated SureLock TV Signal Meter!

- * No need to crank up or down and is always ready for travel
- * Built-in signal meter for fast and accurate antenna pointing
- * Full 360° rotation allows for precise antenna pointing with no "dead spot"

Decors

Bloom



Diego



Heather



Interior Standards

- High Output Range w/Igniter and Large 17" Oven
- Hardwood Cabinet Doors
- Pull-Out Waste Basket
- Skylight Above Shower
- Corian Countertops (FW)
- Full Extension Drawer Guides
- Glass Shower Door & Surround (FW)

Exterior Standards

- Contoured Front Cap for Superior Turning Radius (FW)
- "Dexter" Wide Stance E-Z Lube Axles
- Wired and Framed for 2nd A/C in Bedroom
- 50-Amp Service
- 4-Point Leveling/Stabilizing System (FW)
- Large Triple 9" Entry Steps (FW)
- Extended Drip Spouts
- Dual LP Slide Trays (FW)
- 2cu Refer (Outside Kitchen) (TT) *(Most Models)*
- Exterior Convenience Center
- "Trail Air" Equa Flex Suspension
- Radial Tires
- Front and Rear Stabilizing Jacks (TT)
- Dual Outdoor Security Lights
- Diamond Plate Bumper Cover (TT)
- LP Quick Connect

PURCHASE LOCALLY

Open Range RV strongly encourages our retail customers to purchase from their local dealership whenever possible due to the following reasons:

1) Our Dealers, are as a rule, independently owned and operated businesses. Outside of those customers they personally sold products to, they are not obligated to perform warranty service on Open Range RV products that were purchased elsewhere. There may be an occasion that the customer will be required to return to the point of purchase to satisfy warranty requirements.

2) Although many dealerships will eventually service products not purchased at their dealership, they will usually take care of their customers and other Open Range RV customers who are traveling away from their local dealer as a priority.

3) Local purchases allow a customer to establish a relationship with a dealer close to home. This relationship provides the customer with a convenient location for service and support from a "local" professional.

4) The opportunity for a thorough PDI (Pre Delivery Inspection) and product orientation is an additional benefit of buying from a local dealer. The opportunity for refresher courses or the ability to get questions answered more promptly is another additional benefit of buying from a local dealer.

5) For our Canadian customers, there are also requirements which must be met to bring an RV purchased out of the country to their home. Although not impossible, these requirements may involve such things as additional inspections, certifications, taxes and fees. The local Canadian Dealer is a professional at meeting these requirements.

6) Open Range's goal is for all RV Owners to fully enjoy their RV experience. In light of this goal, and considering the advantages of buying locally, we encourage you to be thorough when determining what product to purchase and which dealer to purchase it from as both are key to your ultimate satisfaction.

Your Open Range Dealer:



Due to continual research and advances, manufacturer reserves the right to change specifications, design, price, and equipment without notice, and assumes no responsibility for any error in the literature. Some items shown are not included as standard or optional equipment

©2011 Open Range RV Company, Shipshewana, Indiana