



SALEM
HEMISPHERE
LITE





312 QBUD shown with Soapstone interior.



312 QBUD bunk area

We can't all say we've experienced Love at First Sight but with Salem's newly designed Hemisphere Lite the chances got a whole lot better. Taking our dealers and customer's feedback to heart, the Hemisphere Lite boasts the needs and wants you've been asking for. From the proven floor plans you've come to know and trust from Salem, paired with the unrivaled storage capacity, like that of our 312 QBUD (shown here), you'll be renewing your vows year after year!



Optional exterior kitchen





256 BHS shown with Chocolate interior.



Our Stainless Steel Appliance Package comes standard in your new Hemisphere Lite.

You'll be feeling like a kid in a candy store when discovering all Hemisphere Lite has to offer. Solid surface countertops, flat screen TV's, air hide-a-bed sofas, designer décors, and Serta brand bed mattresses are only a few of the "goodies" you're sure to enjoy when camping in your new Hemisphere Lite.



Exterior refrigerator



256 BHS shown with Chocolate interior.



262 RL shown with Soapstone interior.



Highlighted by our Vigor Cherry Raised Panel Maple Cabinet Doors, your new Hemisphere Lite has been professionally designed to bring about that sense of serenity you've been searching for. With 4 designer fabrics to choose from you are sure to find something that suits your tastes and needs.



262 RL shown with Soapstone interior.



346 QBUD shown with Butterscotch interior.



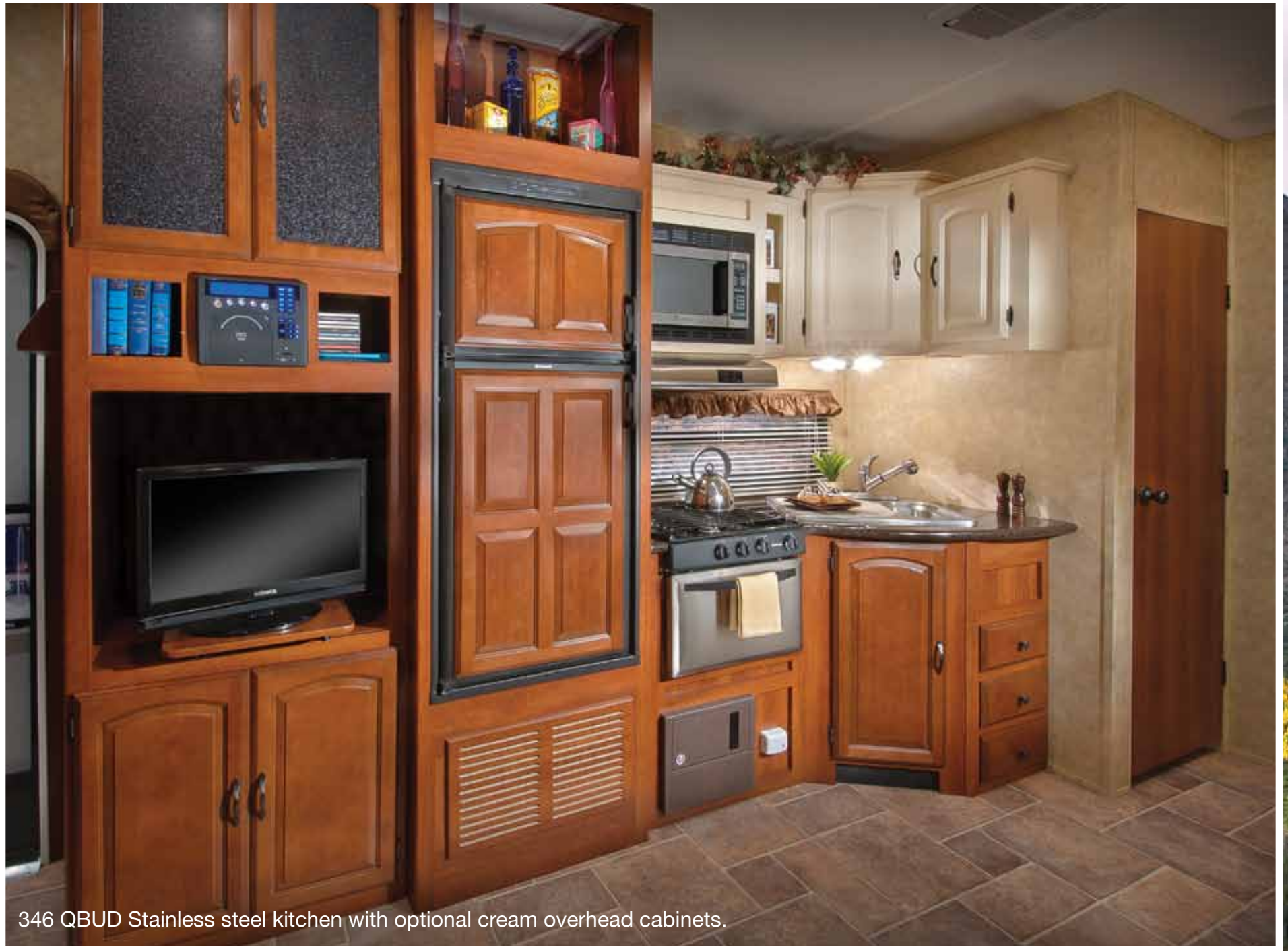


346 QBUD Bedroom

Salem Hemisphere Lite has teamed up with Serta to bring you the comfort and quality you demand in a bed mattress. Paired with our new comfy furniture Hemisphere will provide the relaxation you certainly deserve after a long day out in the woods or around the campground.



316 TBRD



346 QBUD Stainless steel kitchen with optional cream overhead cabinets.



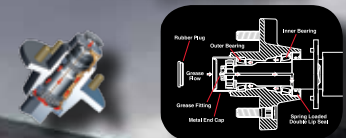
316 TBRD Loft Area

The loft area in the 316TBRD (pictured above) beckons the kids for a summer of fun! This is but one of the many fun, exciting floor plans Hemisphere Lite offers. Visit your local Salem Hemisphere Lite dealer to find out for yourself!



Beau-Flor Durabac Flooring

E-Z LUBE[®]
BEARING LUBRICATION SYSTEM



The E-Z Lube system allows grease to flow with ease to both the outer and inner bearings for a complete repack. No disassembly required.



Smooth Fiberglass 30" Radius Entry Door



Jalousie Windows with Tinted Safety Glass.



Docking Station with Quick Winterizing Feature. (FW's Only)



Full Extension Ball Bearing Drawer Guides.



Radius Triple Entry Steps

Construction



The Salem Hemisphere has a Welded Aluminum Superstructure that is regarded as the Industry's finest, pictured above is the heavier gauge aluminum tubing used by Hemisphere vs. The competitions lighter gauge aluminum.

- A. Main Triple Entry Steps
- B. Folding Entry Assist Handle
- C. Tinted Windows
- D. Ultra Lube Axles
- E. Heated and Enclosed Underbelly
- F. Laminated Vacuum Bonded Aluminum Sidewalls
- G. I-Beam Powder-Coated Frame with Cambered Chassis
- H. Laminated Flooring
- I. Carpet w/ Padding
- J. R-9 Block Foam Insulation
- K. Power Front Jacks
- L. In-Floor Ducted Heat
- M. Ducted 13.5 K BTU Air Conditioning.
- N. Seamless Rubber Roof (12 yr. Warranty)
- O. 3/8" Roof Decking (Full Walk-On Roof)
- P. R-14 Fiberglass insulation Floor & Ceiling
- Q. Insulated Duct for Central Air STD. (all Models)
- R. Crowned Galvanized Roof Rafters
- S. Front Fiberglass Cap
- T. Gel Coated Fiberglass Exterior
- U. Hitch Light
- U. 90 Degree Turning Radius Front Cap

SALEM



Standards and Options

EXTERIOR AND CONSTRUCTION

- EZ-Lube Axles w/15" Radial Tires
- Wide Track Suspension
- 5 Sided Aluminum-framed Vacuum-bonded Construction
- Laminated Sidewalls
- Galvanized Steel Roof Rafters
- 30" Smooth Fiberglass Radius Entry Doors (26" Secondary)
- Diamond Plate Rockguard (Travel Trailers)
- Swing Arm Entry Assist Handle
- Extra Large Full Pass Through Storage (per floorplan)
- Dometic™ One Touch Electric Awning w/ Adjustable Legs (2 Yr. Warranty)
- Upgraded ABS Fender Skirts
- Powder Coated I-beam Frame
- Cambered Chassis
- Laminated Floor w/ In Floor Heat
- Water Heater By-pass
- FW Docking Station
- Power Slide-Out Systems
- 16 Gal. per hour Quick Recovery D.S.I. Water Heater (2 Yr. Warranty)
- Stabilizer Jacks
- Power Front Jacks (Fifth Wheel Only)
- Tinted Safety Glass Windows

KITCHEN

- E-Stone Solid Surface Countertops
- Dometic® Raised Panel Double Door Refrigerator (2 Yr. Warranty)
- Deep Basin Stainless Steel Residential Sink
- Sink Cover (1)
- Microwave with Carousel (1 Yr. Warranty)
- Pull-Out Sprayer Faucet
- Stainless Steel 3-Burner, High Output Range (2 Yr. Warranty)
- Range Hood with 12-Volt

Exhaust Fan and Light

- Beau-Floor™ Durabac Flooring (2 Yr. Warranty)
- Solid Wood Drawer Fronts w/Full Extension Ball Bearing Glides
- Cell Phone Caddy
- Solid Wood Raised Panel Cabinet Doors
- Large Overhead Cabinets
- Wall-Mounted Systems Monitor Panel
- Oil Rubbed Bronze Hardware
- Knife Rack (behind cooktop)

LIVING AREA

- 13,500 BTU Ducted Roof Air Conditioner w/Quick Cool (2 Yr. Warranty)
- Swivel Rocker(s) (per floorplan)
- 44" Oversized Dinette w/ Large Storage Drawer
- Solid Wood Drawers Fronts w/Full Extension Ball Bearing Glides
- Extra Large 48" U-Dinette (Select Floorplans)
- Large Dinette Picture Window
- TV Antenna and Booster
- 26" LCD TV with DVD
- Cable TV and Satellite Prep
- Extra Large Overhead Cabinets w/ Glass Inserts
- Decorative Wall Light
- 30 or 35K BTU Suburban Forced Air DSI Furnace (2 Year Warranty) with Thermostat
- In-Floor Heat Ducting
- Laminated Floor Structure
- Night Shades
- Sky Lights in Slide Outs (Select Floorplans)
- Double Air Hide-A-Bed Sofa
- Twin Hide-A-Bed Sofa (U-Dinette Models, N/A 262FL, 256BHS)

BEDROOM

- Serta Bradley Mattress
- Strut Lifted Storage Area under Bed

- Oversized Bunks (most models)
- Solid Bedroom Privacy Doors (Most Models)
- Mirrored Wardrobe with Large Drawers
- Bunk rated to 300 Lbs.

BATHROOM

- 12-Volt Power Bath Roof Exhaust Vent
- Wooden Medicine Cabinet with Mirrored Door
- Thetford® China Foot Flush Toilet
- Tub Surround
- Skylight over Tub
- Tooth Brush holder and Towel Ring

SAFETY

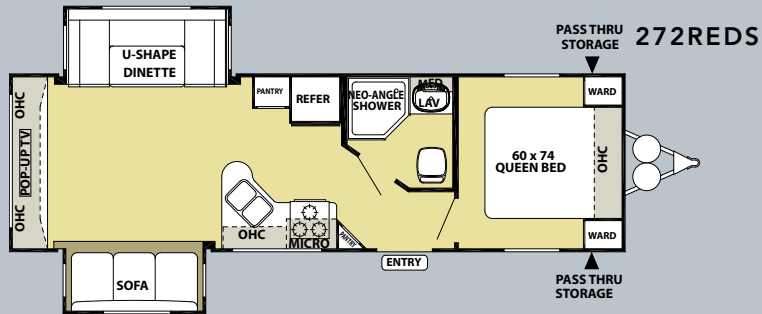
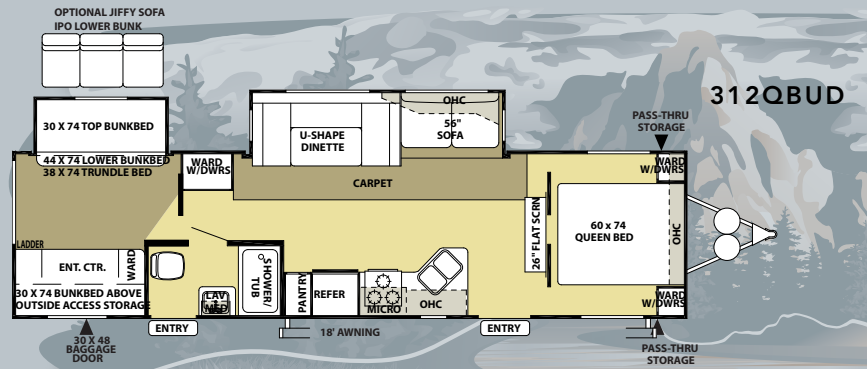
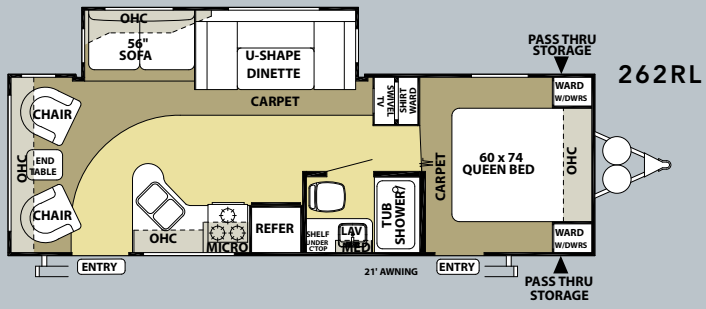
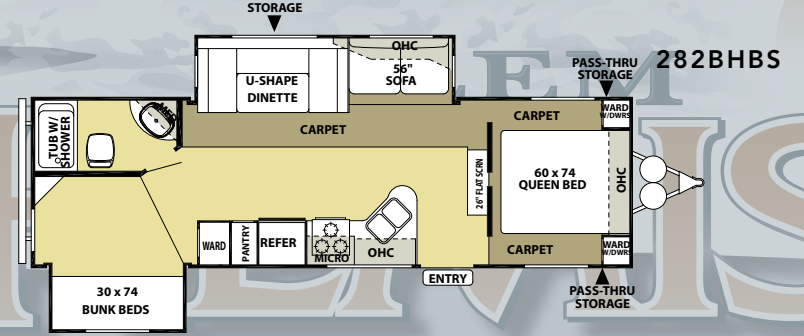
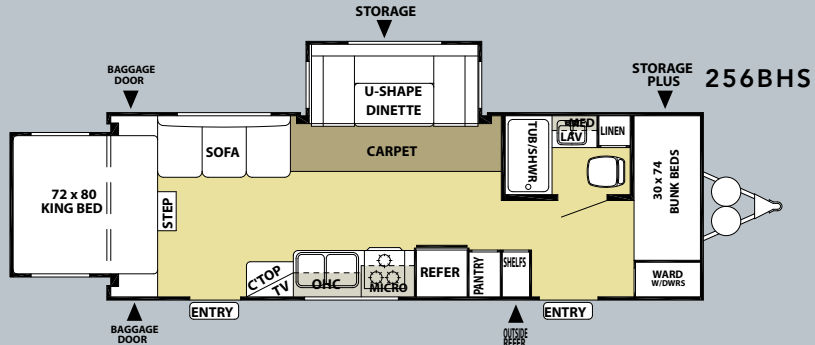
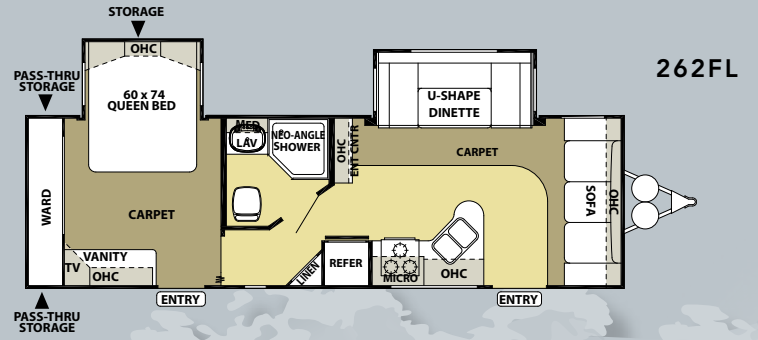
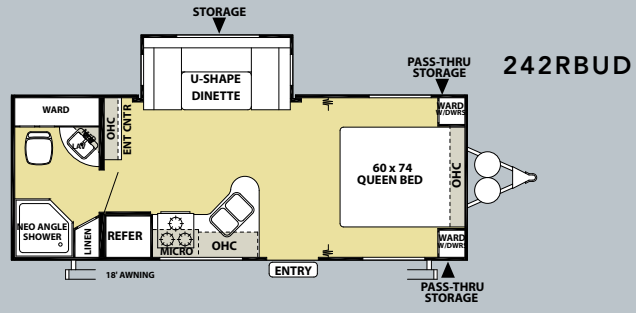
- LP Leak detector
- Smoke Detector
- Carbon Monoxide Detector
- Fire Extinguisher
- Hitch Light
- Amber Patio Light
- Welded Heavy Duty Safety Chains (Travel Trailers)
- Electric Brakes (all wheels)
- GFI Receptacles
- ANSI 119.2
- Certified to Meet National Highway Traffic Safety Administration Specifications

POPULAR OPTIONS

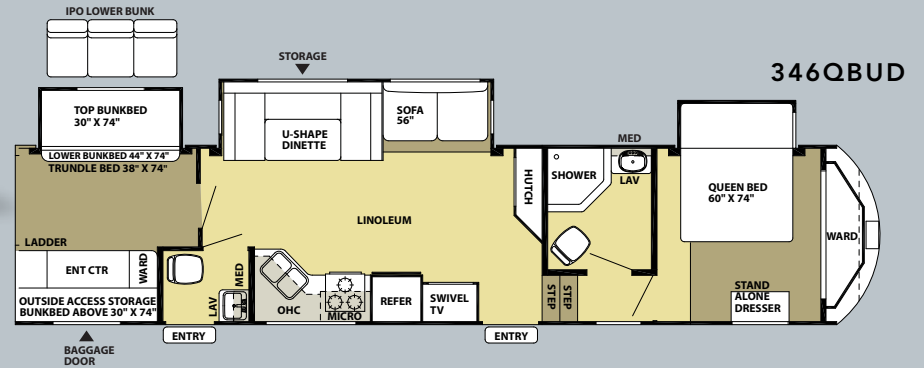
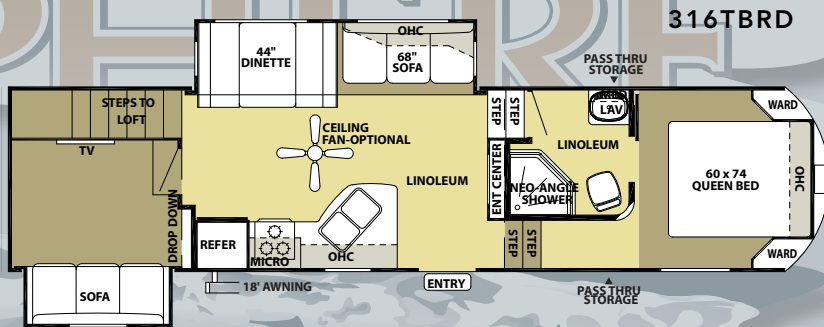
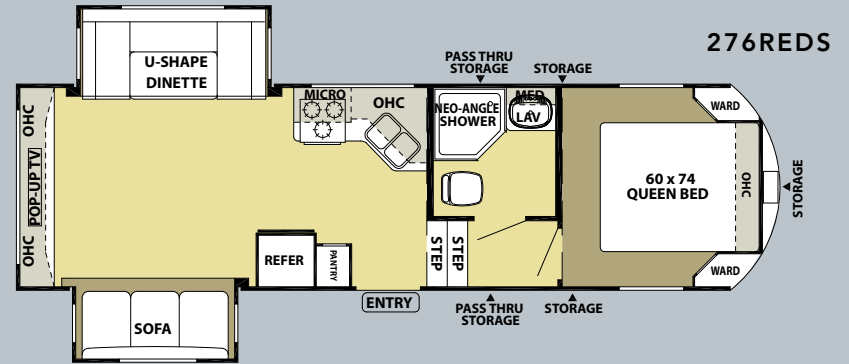
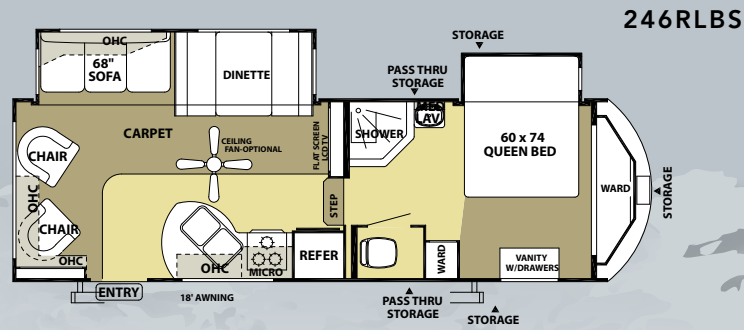
- Free Standing Dinette w/4 Chairs
- Living Room Ceiling Paddle Fan (5th Wheel Models)
- Roof Ladder
- 15,000 BTU Ducted A/C w/Quick Cool
- Outside Shower (Travel Trailer)
- Creme Colored Overhead Cabinets

Contact your Salem dealer for a complete list of options





FIFTH WHEEL FLOORPLANS



Model	242RBUD	256BHS	262FL	262RL	272REDS	282BHBS	312QBUD	246RLBS	276REDS	316TBRD	346QBUD
Hitch Weight (lb)	475	765	885	540	TBD	660	855	900	TBD	1490	1995
Axle Weight	4460	5085	5550	5285	TBD	6520	5985	6560	TBD	8195	8210
Dry Ship Weight	4935	5850	6435	5825	TBD	7180	6840	7460	TBD	9545	10205
GVWR	7475	7765	7885	7540	TBD	10820	9500	11060	TBD	11510	12115
CCC (Cargo Capacity)	2481	1855	1390	1655	TBD	3580	2600	3541	TBD	1906	1891
Ext Length	25'10"	29'0"	31'2"	29'0"	TBD	31'8"	35'10"	28'6"	TBD	36'7"	39'7"
Int Height	78"	78"	78"	78"	TBD	78"	78"	84"	TBD	84"	84"
Fresh Water Cap (gal)	38	38	38	38	TBD	38	38	46	TBD	46	46
Black Water Cap (gal)	32	32	32	32	TBD	32	32	32	TBD	34	64
Grey Water Cap (gal)	32	32	32	32	TBD	32	32	35	TBD	69	64
Tire Size (in)	15"	15"	15"	15"	TBD	15"	15"	15"	TBD	15"	15"
Awning Size (ft)	18'	TBD	TBD	21'	TBD	TBD	18'	18'	TBD	20'	18'

JOIN THE SALEM FAMILY

**CRUISE
LIFE
SALEM**



SALEM



SALEM



SALEM



SALEM



SALEM



SALEM



SALEM



SALEM



Forest River Encourages You to Buy Locally

- Forest River, Inc. strongly encourages our retail customers to purchase from their local dealership whenever possible due to the following factors:
- Our Dealers are as a rule, independently owned and operated businesses. Outside of those customers they personally sold products to, they are not contractually obligated to perform warranty service on Forest River products that were purchased elsewhere. There may be an occasion that you would be required to return to the point of purchase to satisfy warranty requirements.
 - Although many dealerships will eventually service products not purchased at their place of business, they will usually take care of their customers and other Forest River customers who are traveling away from their local dealer as they would their own.
 - Local purchases allow a customer to establish a relationship with a dealer close to home. This relationship provides the customer with a convenient location for service and support from a "home town" professional.
 - The opportunity for a thorough PDI (Pre Delivery Inspection) and product orientation is an additional benefit of buying from your local dealer. Further providing the opportunity for refresher courses or the ability to get questions answered much more conveniently.
 - For our Canadian customers, there are also requirements which must be met to bring an RV purchased out of the country to their home. Although not insurmountable, these requirements may involve such things as additional inspections and certifications, taxes and fees. Your local Canadian Dealer is a professional at meeting these requirements.
- Forest River's goal is for all RV Owners to fully enjoy their RV experience. In light of this goal, and considering the advantages of buying local, we encourage you to be thorough when determining what product to purchase and which dealer to purchase it from as both are key to your ultimate satisfaction and the realization of your dreams.

YOUR HEMISPHERE DEALER



Forest River, Inc.
55470 C.R. 1
Elkhart, IN 46514
(574) 389-4600
www.forestriverinc.com
www.forestriveraccessories.com

PEACE OF MIND.

Forest River has yet another exclusive feature to offer: One year of free roadside assistance will be given to every new Salem Hemisphere customer. This is just one more way to say "Thank you" and to ensure an enjoyable traveling experience.



Interior Color Options



Butterscotch Interior



Canyon Interior



Chocolate Interior



Soapstone Interior



Scan this barcode using a QR Reader on your smart phone to learn more about Forest River.



All specifications contained herein are based on the latest product information at time of printing. Forest River reserves the right to make changes in colors, materials, equipment and specifications at any time without notice and assumes no responsibility for any errors in this brochure. PLD08091000