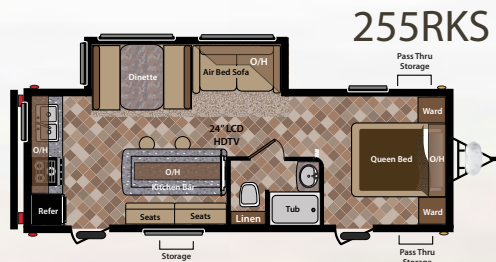
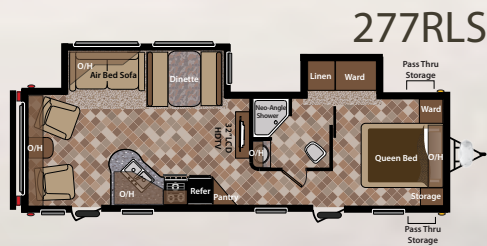


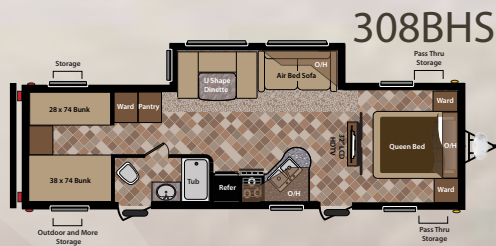
# SPRINTER



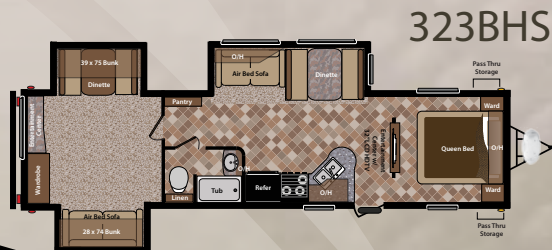
255RKS



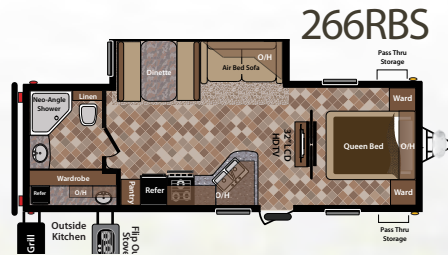
277RLS



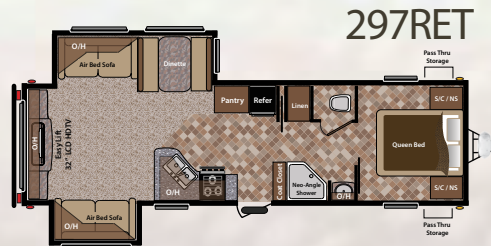
308BHS



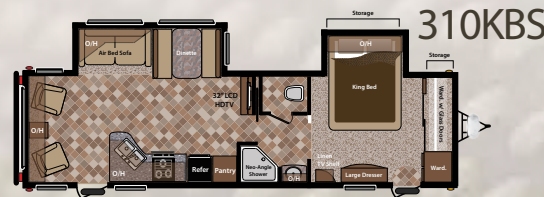
323BHS



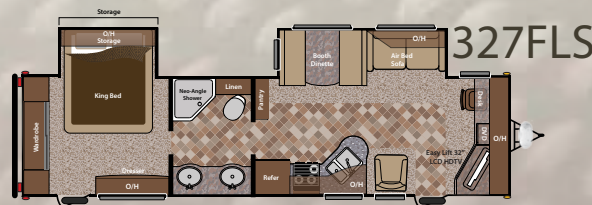
266RBS



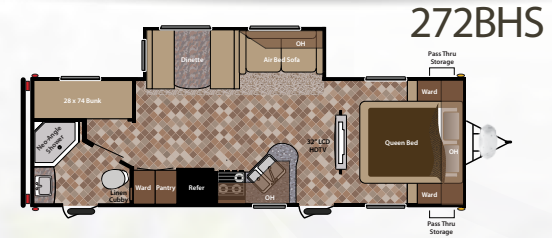
297RET



310KBS



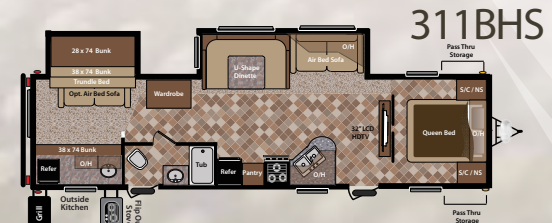
327FLS



272BHS



300KBS



311BHS



328RLS

## TRAVEL TRAILERS

MODEL	255RKS	266RBS	272BHS	277RLS	297RET	300KBS	308BHS	310KBS	311BHS	323BHS	327FLS	328RLS
WEIGHT	6,179	6,410	6,515	7,235	7,913	7,886	7,297	8,126	8,075	8,735	8,110	TBD
CARRY. CAPACITY	2,621	3,075	2,950	2,290	3,077	3,074	2,233	2,884	2,920	2,320	3,090	TBD
HITCH	640	685	665	725	830	1,000	730	850	835	895	1,040	TBD
LENGTH	27' 10"	29' 5"	30' 7"	31' 11"	34' 11"	34' 5"	34' 4"	35' 3"	35' 4"	36' 9"	35' 10"	36' 8"
EXT. HGT. - AC TOP	11'	11'	11'	11'	11' 1"	11' 3"	11'	11' 3"	11' 3"	11' 3"	11' 3"	11' 3"
FRESH WTR	47	47	47	47	47	47	47	47	47	47	47	47
WASTE WTR	32	32	32	32	32	32	32	32	32	32	32	32
GREY WTR	64	64	64	64	64	64	64	64	64	64	64	64

Scan & See

View features, photos  
and more! Get your free  
app at: <http://gettag.mobi>



# SPRINTER



## EXTERIOR FEATURES

- Laminated aluminum framed sidewalls
- Enclosed underbelly with direct vent heat
- E-Z Lube™ axles
- Next Generation Fiberglass Front Cap
- LP Bottles night light
- Power Tongue Jack
- One touch electric awning
- Friction Hinge Entry Door
- Extra large lockable, radius baggage doors
- Rear bumper storage
- 9" easy opening triple entry step
- Entry step light
- Battery disconnect system
- Extra large Folding Grab Handle
- Tough guard painted skirt metal spouts
- Extra long rain gutters and spouts
- Two 30 LBS LP bottles with automatic change-over
- Roto-cast seamless holding tanks
- Black tank flush system
- Outside shower
- Keystone Original space maker 47 gallon fresh water system.
- 30' 30 Amp power cord
- Cable and satellite hook-up
- Radial Tires
- Outside speakers
- Patio light
- Light at the termination points
- Picnic Table in pass through
- Back-up light
- Toylok® Security System
- Upgraded two burner cook-top (Outside Kitchen models only)
- Bumper mounted grill w/LP gas connection (Outside Kitchen models only)

- 12V Power plug (Outside Kitchen models only)

## INTERIOR FEATURES

- 80" Interior Height
- 13,500 BTU ducted air conditioner with "Quick Cool"
- 12 Volt, 55 amp converter
- 30,000 BTU auto-ignition furnace
- Windows in both Slide-room end walls
- Water heater bypass for easy winterization
- Digital Thermostat
- Residential cabinet hardware
- Large picture window at the dinette
- 12 volt slide room lights for dry camping
- Overhead slide room cabinets
- Home Theater Surround Sound® system
- In floor ducted heat
- LED floor lighting
- Easy Find light switches
- Central monitoring system for all tanks and battery
- Command Center for awning, slide-outs, lights, etc.
- Full extension ball bearing drawer guides
- Screwed cabinetry with lumber-core stiles
- Beau-flor Linoleum

## LIVING ROOM FEATURES

- Cable TV hook-up with antenna and signal booster
- Satellite prep with RG-6 cable
- High grade carpeting
- Residential fabric-covered valances w/removable drapes
- Angled overhead storage in the slide room
- Home theater DVD / CD / AM /

- FM / MP3 hookup
- Air bed sofa w/ storage drawer
- 32" HD LCD Television

## BATH FEATURES

- Large vanity sink
- Porcelain foot flush toilet
- Residential medicine cabinet with mirror
- ABS one piece tub surround
- Neo Angle glass shower (Select models)
- Skylight over tub
- Reinforced tub support
- Power roof vent fan
- GFI receipts in the bathroom

## KITCHEN FEATURES

- 6 gallon gas/electric DSI auto ignition water heater w/ 16.2 gph recovery
- 3 burner high output gas range
- Large single bowl sink with cover
- Full extension ball bearing metal drawer guides
- Metal pull-out sprayer faucet
- Waste basket storage
- Lighted range hood with exhaust fan
- Microwave with carousel
- 17" oven
- Reversible dinette seat cushions
- Double door refrigerator
- Raised panel cabinet doors
- Overhead cabinets above the sink
- Oversized pots and pan drawers

## BEDROOM FEATURES

- Cable TV hook-up
- High grade carpet in master bedroom

- Under bed storage w/ gas struts
- Color matched bedspread
- Bedroom reading lights
- Dream Collection Mattress
- King bed (Bedroom slide models)
- Electrical outlets near the bed
- Roof vent

## "CUSTOMER FIRST" SAFETY PACKAGE

- Tinted safety glass windows
- Dual hitch safety chains
- Easy access manual override for the slide rooms
- Fire extinguisher
- Smoke detector
- Carbon monoxide detector
- Egress windows
- LP gas leak detector
- Break away safety brake
- 4 wheel electric brakes
- Hitch light
- Door side and off door side clearance lights
- Security light

## POPULAR OPTIONS

- Spare tire
- Upgraded 15,000 BTU air conditioner
- Free standing dinette with four chairs
- Aluminum wheels
- 68" air bed sofa in place of lower bunk and trundle (311BHS)

## "CAMPING MADE EASY" PACKAGE

- Frame side manual override for the slide rooms
- Exterior speakers
- Electric awning
- Friction hinge entry door
- Toylok Security System
- Picnic Table in pass thru storage
- E-Z Lube® axles
- Battery disconnect
- Back-up light
- Black tank flush
- Outside shower
- Dream Collection Mattress
- Easy Find light switches
- LED floor lights
- Bumper mount grill w/LP hook-up (Outside Kitchen models only)



YOUR LOCAL DEALER:



**Keystone RV Company**

2642 Hackberry Drive, PO Box 2000  
Goshen, IN 46527-2000  
keystonerv.com | (574) 535-2100

Go RVing®



Product information is as accurate as possible as of the date of publication of this brochure. Features, floor plans, and specifications are subject to change without notice. Please also consult Keystone's web site at [www.keystonerv.com](http://www.keystonerv.com) for more current product information and specifications. Tow Vehicle Disclaimer. CAUTION: Owners of Keystone recreational vehicles are solely responsible for the selection and proper use of tow vehicles. All customers should consult with a motor vehicle manufacturer or their dealer concerning the purchase and use of suitable tow vehicles for Keystone products. Keystone disclaims any liability or damages suffered as a result of the selection, operation, use or misuse of a tow vehicle. KEYSTONE'S LIMITED WARRANTY DOES NOT COVER DAMAGE TO THE RECREATIONAL VEHICLE OR THE TOW VEHICLE AS A RESULT OF THE SELECTION, OPERATION, USE OR MISUSE OF THE TOW VEHICLE. 9/2011