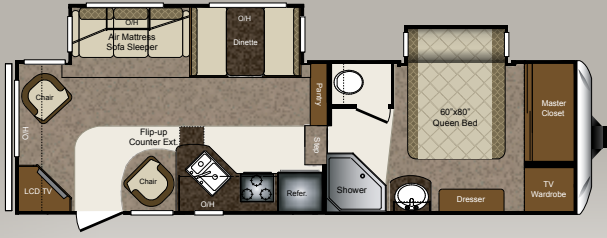


Laredo

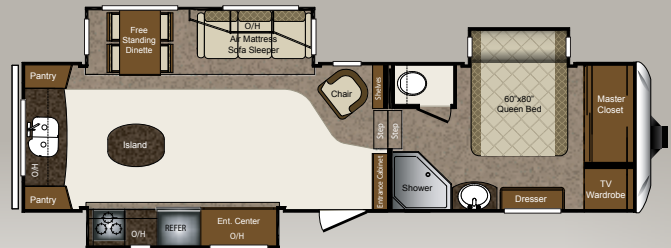
By Keystone



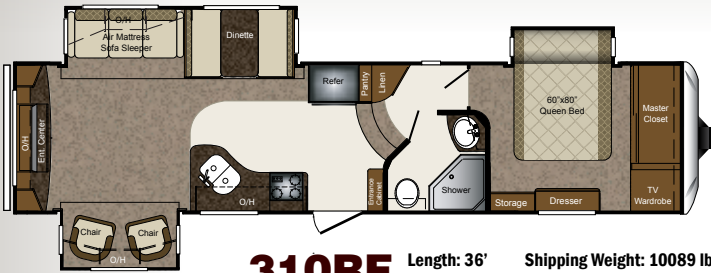
LAREDO FIFTH WHEELS



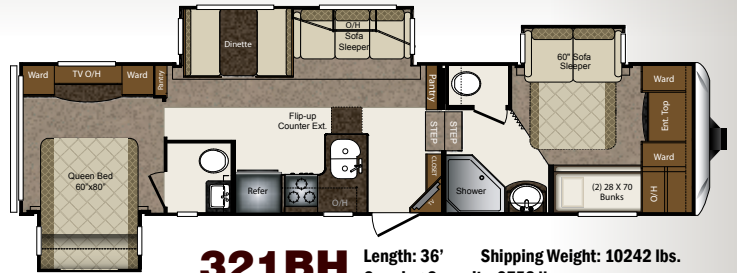
266RL Length: 30' 5" Shipping Weight: 8251 lbs.
Carrying Capacity: 2749 lbs.



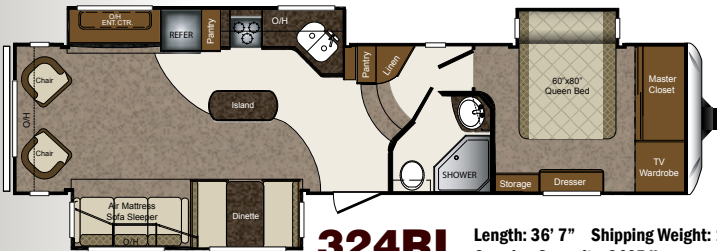
295RK Length: 33' 10" Shipping Weight: 9700 lbs.
Carrying Capacity: 2800 lbs.



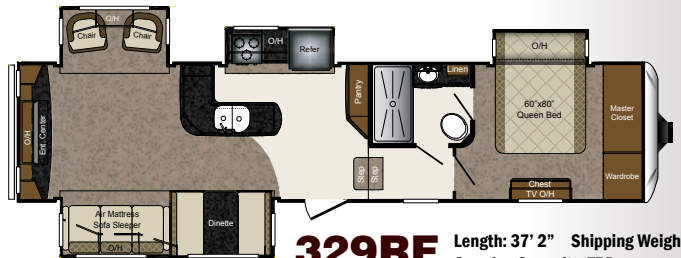
310RE Length: 36' Shipping Weight: 10089 lbs.
Carrying Capacity: 2911 lbs.



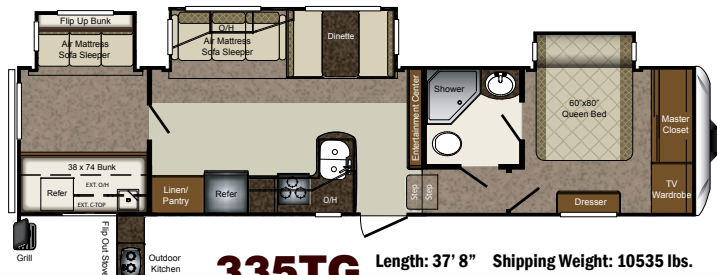
321BH Length: 36' Shipping Weight: 10242 lbs.
Carrying Capacity: 2758 lbs.



324RL Length: 36' 7" Shipping Weight: 10326 lbs.
Carrying Capacity: 2465 lbs.



329RE Length: 37' 2" Shipping Weight: TBD
Carrying Capacity: TBD



335TG Length: 37' 8" Shipping Weight: 10535 lbs.
Carrying Capacity: 2465 lbs.

STANDARDS AND OPTIONS

EXTERIOR

- ThermaShield 37 holding tank enclosure
- Fully enclosed underbelly
- Heated, enclosed holding tanks & gate valves
- Oversized lighted pass-thru storage
- Roto-cast storage for wet or greasy items
- Exterior shower w/hot & cold
- Folding entry assist handle
- Exterior marine grade speakers
- Rain gutters w/downspouts
- Security light
- Entrance door light
- Rear ladder
- Triple entrance steps
- Electric front jacks w/adjustable snap pins
- Aerodynamic front cap with Hitch Assist Mirror & 2 LED lights w/Max Turn Technology
- Outside 110V outlet & TV connection

TIRES & CHASSIS

- Powder-coated I-beam frame
- Tube style bumper w/sewer hose storage
- Electric slideout system w/manual override
- Adjustable extended hitch pin
- Radial tires
- EZ lube axles
- 12" electric brakes
- Full-size spare tire

INTERIOR

Living Area

- Extra wide dinette w/storage below
- 6' 3" slide room height
- Ventilating windows on slideout end walls
- Overhead cabinets in slide rooms
- Residential grade carpet and padding
- Stain resistant fabrics
- Pleated shades
- Designer window treatments
- Raised panel mortise & tenon cabinet doors
- Entertainment center w/TV cabinet

Kitchen

- Residential-size overhead cabinets
- Dual sink covers
- 60/40 deep-bowl sink
- Metal high-rise faucet
- Linoleum floor
- Ball bearing full extension drawer guides

Bathroom

- Oversized shower w/glass door
- Tub surround w/shelves
- Foot pedal flush toilet
- Residential-size bath sink
- Medicine cabinet
- Skylight over bath
- Power roof vent

Bedroom

- 60"X80" innerspring mattress
- Bedsread w/matching headboard
- Wardrobe storage
- TV hook-up
- Reading lights

Appliances

- 12V AM/FM/CD/DVD home theater system w/ surround sound effect speakers
- Double door refrigerator w/wood inserts
- Microwave with carousel
- Range hood and light
- 13,500 BTU ducted A/C
- 22" high output range w/auto igniter

Utilities

- 2-30lb LP bottles w/auto changeover
- 35,000 BTU high-output furnace w/auto ignition
- Water heater bypass kit
- Systems monitor panel
- Cable & satellite connections
- 55-amp power convertor

Safety

- Break away switch
- Tinted safety glass windows
- GFI receipts
- Carbon monoxide detector
- Smoke alarm
- Propane gas leak detector
- Fire extinguisher

Best in Class Package (All FWs)*

- Deluxe exterior graphics
- Residential glazed maple cabinet doors
- Adjustable electric awning
- LCD HDTV
- Bus style slam baggage doors
- Comfort Zone climate system
- Equa-Flex suspension system
- Aluminum wheels
- Air mattress sleeper sofa w/storage below
- Solid surface countertops (kitchen)
- Crown molding

Bigger Is Better Package (All FWs)*

- 8 cubic foot refrigerator
- 12 gallon gas/electric DSI hot water heater
- 16"-8 lug aluminum wheels
- 6,000lb axles
- 50 AMP service
- Wired and framed for 2nd A/C

*Mandatory Package

Laredo
By Keystone

www.keystone-laredo.com

Product information is as accurate as possible at the date of publication of this brochure. Features, floor plans, and specifications are subject to change without notice. Please also consult Keystone's web site at keystonev.com for more current product information and specifications. Tow Vehicle Disclaimer. CAUTION: Owners of Keystone recreational vehicles are solely responsible for the selection and proper use of tow vehicles. All customers should consult with a motor vehicle manufacturer or their dealer concerning the purchase and use of suitable tow vehicles for Keystone products. Keystone disclaims any liability or damages suffered as a result of the selection, operation, use or misuse of a tow vehicle. KEYSTONE'S LIMITED WARRANTY DOES NOT COVER DAMAGE TO THE RECREATIONAL VEHICLE OR THE TOW VEHICLE AS A RESULT OF THE SELECTION, OPERATION, USE OR MISUSE OF THE TOW VEHICLE. 12/2011