

STAMPEDE

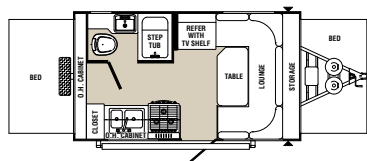
ULTRA-LITE TRAVEL TRAILERS



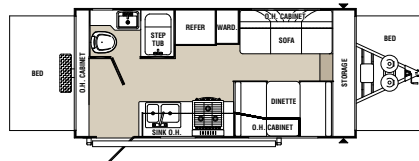
2012 Floorplans



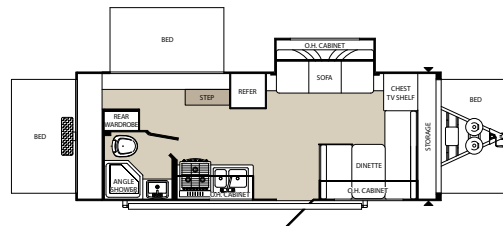
STAMPEDE TRAVEL TRAILER FLOORPLANS



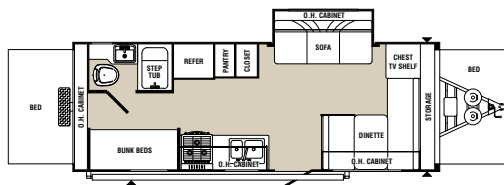
S-17



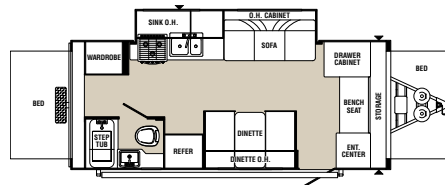
S-195 SD



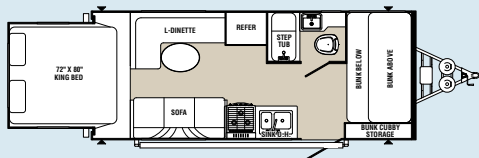
S-21 RGS



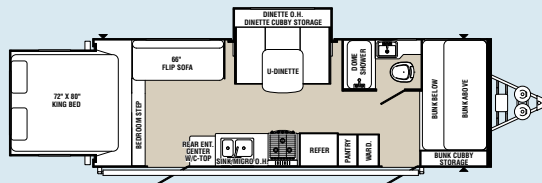
S-23 BH



S-238



S-216



S-240

2012 STAMPEDE ULTRA LITE TRAVEL TRAILER SPECIFICATIONS

DESCRIPTION	S-17	S-195 SD	S-21 RGS	S-23 BH	S-238	S-216	S-240
Hitch Dry Weight (lbs.)	436	282	448	487	436	545	530
Dry Axle Weight (lbs.)	2,369	3,086	3,720	3,788	3,718	3,652	4,134
Total Dry Weight (lbs.)	2,805	3,368	4,168	4,275	4,154	4,197	4,664
GVWR (lbs.)	3,936	4,602	5,402	5,487	5,388	5,431	5,898
Interior Height	6' 6"	6' 6"	6' 6"	6' 6"	6' 6"	6' 6"	6' 6"
Exterior Height	9' 3"	9' 3"	9' 3"	9' 3"	9' 3"	9' 3"	9' 9"
Exterior Width	8'	8'	8'	8'	8'	8'	8'
Travel Length	17' 4"	20' 3"	25' 3"	25' 2"	23' 8"	23' 8"	30'
Fresh Water Capacity	32 Gals.	32 Gals.	32 Gals.	32 Gals.	32 Gals.	32 Gals.	32 Gals.
Gray Water Capacity	30 Gals.	30 Gals.	30 Gals.	30 Gals.	30 Gals.	30 Gals.	30 Gals.
Black Water Capacity	30 Gals.	30 Gals.	30 Gals.	30 Gals.	30 Gals.	30 Gals.	30 Gals.



Palomino RV
 1047 East M-86
 Colon, MI 49040
Phone: (269) 432-3271
Fax: (269) 432-2516
www.palominorv.com



Learn More
 Scan this barcode using
 a QR Reader on your
 smart phone to learn
 more about Forest River.



A Berkshire Hathaway company.