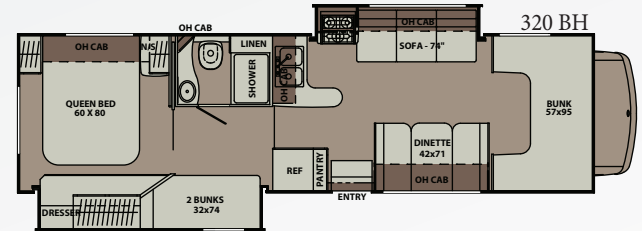
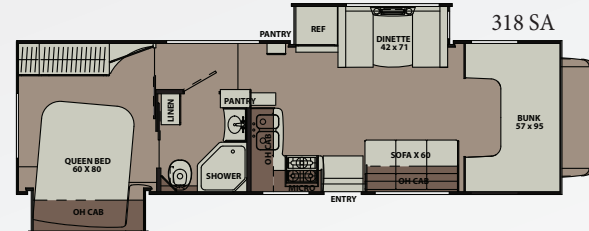
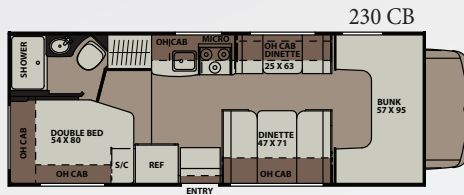
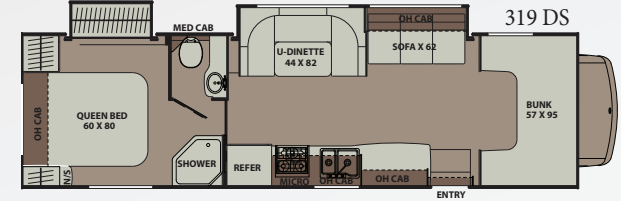
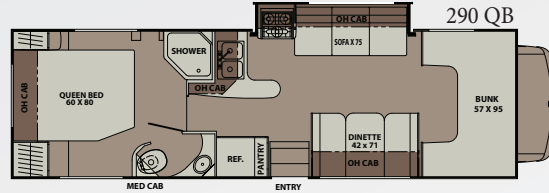
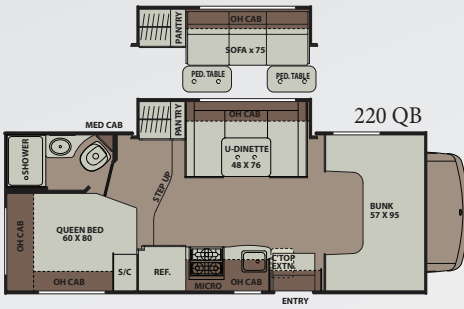
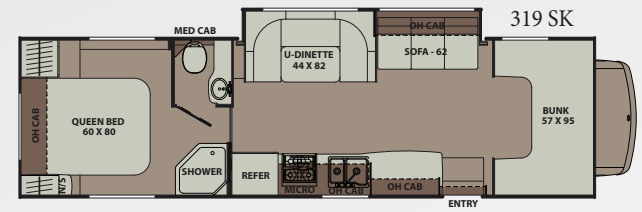
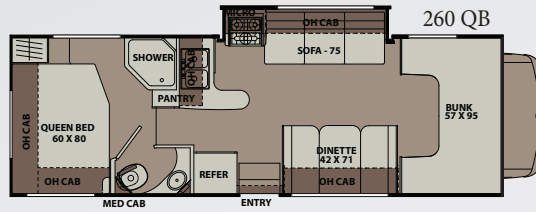
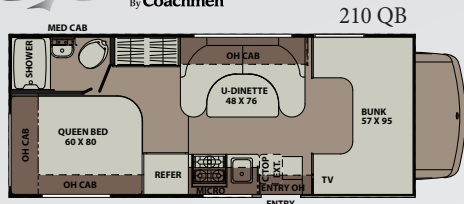


LEPRECHAUN FLOOR PLANS AND SPECIFICATIONS

By Coachmen



MODEL	210 QB	220 QB	230 CB	260 QB	290 QB	318 SA	319 SK	319 DS	320 BH
CHASSIS	4500-CHEVY / 350-FORD	4500 CHEVY/ 350-FORD	4500 CHEVY/ 350-FORD	4500 CHEVY/ 450-FORD	4500 CHEVY/ 450-FORD	450-FORD	450-FORD	450-FORD	450-FORD
ENGINE	V8 - 6.0L / V10 - 6.8L	V8-6.0L / V10-6.8L	V8-6.0L / V10-6.8L	V8-6.0L / V10-6.8L	V8-6.0L / V10-6.8L	V10 - 6.8L	V10 - 6.8L	V10 - 6.8L	V10 - 6.8L
HORSE POWER	324 / 305	324 / 305	324 / 305	324 / 305	324 / 305	305	305	305	305
TORQUE	373 / 420	373 / 420	373 / 420	373 / 420	373 / 420	420	420	420	420
WHEEL BASE	159" / 158"	169" / 168"	183" / 182"	191" / 190"	209" / 208"	223"	223"	223"	223"
GVWR (LBS.)	14,200 / 12,500	14,200 / 12,500	14,200 / 12,500	14,200/ 14,500	14,200/ 14,500	14,500	14,500	14,500	14,500
GCWR (LBS.)	20,000 / 18,500	20,000 / 18,500	20,000 / 18,500	20,000 / 22,000	20,000 / 22,000	22,000	22,000	22,000	22,000
UVW (APPROX. LBS.)	9,100 / 9,087	10,300 / 10,040	10,300 / 9,986	11,000 / 11,250	11,300 / 11,500	12,510	12,000	12,270	12,340
CCC (APPROX. LBS.)	5,100 / 3,413	3,900 / 2,460	3,900 / 2,514	3,200 / 3,250	2,900 / 3,000	1,990	2,500	2,230	2,160
GAWR FRONT (LBS.)	4,600 / 4,600	4,600 / 4,600	4,600 / 4,600	4,600 / 5,000	4,600 / 5,000	5,000	5,000	5,000	5,000
GAWR REAR (LBS.)	9,600 / 8,500	9,600 / 8,500	9,600 / 8,500	9,600 / 9,600	9,600 / 9,600	9,600	9,600	9,600	9,600
INTERIOR HEIGHT	6' 11"	6' 11"	6' 11"	6' 11"	6' 11"	6' 11"	6' 11"	6' 11"	6' 11"
EXTERIOR WIDTH	8' 4"	8' 4"	8' 4"	8' 4"	8' 4"	8' 4"	8' 4"	8' 4"	8' 4"
EXTERIOR HEIGHT (W/ A/C)	10' 10"	10' 10"	10' 10"	10' 10"	10' 10"	10' 10"	10' 10"	10' 10"	10' 10"
EXTERIOR LENGTH (W/ HITCH)	23'-11" / 23'-6"	24'-10" / 24'-5"	26'-1" / 25'-8"	28'-5" / 28'-0"	31'-1" / 30'-8"	32'-1"	32'-6"	32'-6"	32'-6"
HITCH WEIGHT (LBS.)	5,000	5,000	5,000	5,000	5,000	5,000	5,000	5,000	5,000
FUEL CAPACITY (GAL.)	57 / 55	57 / 55	57 / 55	57 / 55	57 / 55	55	55	55	55
LP CAPACITY (LBS.)	68	68	68	68	68	68	68	68	68
FRESH WATER CAPACITY (GAL.)	50	50	50	50	50	50	50	50	50
WATER HEATER CAPACITY (GAL.)	6	6	6	6	6	6	6	6	6
GREY TANK CAPACITY (GAL.)	25	28	28	25	29	34	29	29	34
BLACK TANK CAPACITY (GAL.)	22	22	22	29	29	29	29	29	29
EXTERIOR STORAGE (CU. FT.)	91	92	93	84	112	57	100	100	76
AWNING LENGTH (FT.)	15'	16'	17'	15'	16'	16'	21'	21'	11'

STANDARD EQUIPMENT

WARRANTY

- Motorhome - 12 Month/ 12,000 mile limited warranty
- Ford Chassis - 36 month/ 36,000 mile bumper-to-bumper warranty
- Ford Powertrain - 60 month/ 60,000 mile warranty
- Chevy Chassis - 36 month/ 36,000 mile bumper-to-bumper warranty
- Chevy Powertrain - 60 month/ 100,000 mile warranty

INTERIOR APPOINTMENTS

- Residential Hardwood Cabinet Doors & Drawers
- Oil Rubbed Bronze Hardware
- Laminate Self Edge Countertops
- Pull Out Countertop Extension (230QB)
- Upgraded Linoleum Flooring Thru out
- Pleated Night Shade Window Treatments
- Rounded U-shaped Dinette (210QB only)
- Square U-shaped Dinette (220QB only)
- Booth Dinette with "Dream Dinette" Mechanism (N/A 210QB, 220QB, 319SK & 319DS)
- Oversize Booth Dinette with "Dream Dinette" Mechanism (230CB only)
- Small Booth Dinette with "Dream Dinette" Mechanism, Converts into a Sofa (230CB only)
- Oversize U-shape Dinette (319SK & 319DS only)
- Jackknife Sofa (N/A 210QB & 230QB)
- High Quality Upholstery
- Hardboard Ceiling Panels (Soft Touch Look)
- Incandescent Ceiling Lights
- Interior Safety Grab Handle at Entry Door
- Entertainment Center with 40" LCD TV & Home Stereo (319SK & 319DS only- Pop-up Electric Lift & Home Stereo
- Conveniently Placed Light Switches

GALLEY

- Residential Size, Overhead Microwave Oven
- 3-Burner Cooktop with Pots & Pans Drawer Below
- Power, Lighted Range Hood
- Large Double Door Refrigerator with Wood Refer Insert
- Composite Round Bowl Sink with Sink Cover (210QB, 220QB & 230QB only)
- Composite Double Bowl Sink with Sink Cover (N/A 210QB, 220QB & 230QB)
- Residential Metal Drawer Glides
- Hi-Rise Kitchen Faucet
- Mini Blind

SLEEPING

- Bunk Beds - 32x74 (320BH)
- Queen Bed - 60x80 (N/A 230QB)
- Double Bed - 54x80 (230QB)
- Cab over Bunk
- Bedsprad (N/A 210QB, 220QB, 230QB & 260QB)
- Fabric Covered Mattress (210QB, 220QB, 230QB & 260QB)
- Upgrade Headboard (N/A 260QB)
- Shirt Closet and/or Wardrobe
- Solid Privacy Door (N/A 210QB, 220QB & 230CB)
- Bedroom LCD TV Backer & Connections-Mounting Backer,
- Power outlet, Cable Hook-up

ELECTRICAL AND HEATING

- "Coach Command" Systems Control Center
- 30 amp Power Cord
- 55 amp Electronic Converter
- Auxiliary Coach Battery
- GFI Circuit
- Battery Disconnect
- Wall Mounted Thermostat
- 20K BTU Ducted E.I. Furnace (210QB, 220QB & 230QB)
- 30K BTU Ducted E.I. Furnace (N/A 210QB, 220QB & 230QB)
- 13,500 BTU Non-Ducted Roof A/C (210QB, 220QB & 230QB)
- 13,500 BTU "Even Cool" Ducted Roof A/C (N/A 210QB, 220QB & 230QB)
- Guardian 40G Series Gas Generator

BATHROOM AND WATER SYSTEM

- Porcelain Foot Flush Toilet
- Power Bath Vent Fan
- ABS Molded Shower Surround
- Frosted Shower Door
- Shower Skylight
- 6-Gallon Gas E.I. Water Heater
- Demand Water Pump
- Tuff-Pex Plumbing Supply Lines
- Composite Single Bowl Lav Sink
- Hand Towel Ring, Toilet Paper Holder, Robe and Towel Hooks
- Black Tank Flush
- Easy Access Waste Tank Termination Station
- Upgrade Shower Head with Flexible Hose Extension
- Vanity Mirror

SAFETY EQUIPMENT

- Propane Leak Detector/ Alarm
- Smoke Detector/ Alarm
- Carbon Monoxide Detector/ Alarm
- Fire Extinguisher
- Dead Bolt Lock at Entry Door
- Multiple Seat Belt Locations
- Travel Easy, Roadside Assistance

EXTERIOR/ CONSTRUCTION/CHASSIS

- Laminated Steel Floor
- 2" Laminated Aluminum Framed Sidewalls
- Laminated Aluminum Framed Crowned with TPO Roof Membrane
- Hi-Gloss Exterior Fiberglass Sidewalls
- Azdel "Superlite" Composite Sidewall Sub straight
- Exterior Vinyl Graphics
- 80" Radius Entrance Door with Window
- Steel Step Well with Built-in Easy Access Battery
- Compartment Integrated Drop-Down Entry Step
- Radius Exterior Storage Doors
- Exterior Shower
- Patio Light
- Exterior Rear Compartment Light
- Power Awning with Vinyl Weather Guard
- Slide-out Awning Toppers
- Safety Glass Windows
- Steel Rear Bumper
- "Warehouse" Exterior Roto-Molded Storage Compartment
- Exterior Entry Assist Handle
- TV Power Boost Antenna
- 110 volt, GFI Protected Exterior Receptacles
- Campside Coax Connection
- Privacy Drape- Lower Cab
- AM/FM/CD Dash Radio with Touch Screen Controls & Integrated Back-up Monitor
- Reclining Pilot & Passenger Seats
- Driver & Passenger Air Bags
- Cruise Control
- Tilt Steering Wheel
- Power Windows & Locks
- Dash Air Conditioning
- Keyless Entry (Ford E450 Chassis only)
- Dual 12 volt Power Ports
- Exterior LED Running Lights & Tail Lights
- Towing Hitch w/ 7 Way Plug
- Stainless Steel Wheel Inserts
- Aluminum Running Boards
- Back-up Camera
- Upgraded Exterior Mirrors

DÉCOR OPTIONS

- Redwood Sequoia
- Copper Geo
- Zanzibar Beige

CABINERY

- Ciera Cherry

OPTIONAL EQUIPMENT

- Front Entertainment Center with 32" LCD TV & Home Stereo (N/A 319SK, 319DS)
- 24" LCD TV w/ DVD - Coach (N/A 319SK, 319DS & 320BH with Ent. Package)
- 24" LCD TV & DVD Player - Bedroom
- Bunk House Entertainment Package (320BH) - 24" LCD TV in Cabover with DVD player & 2 Bunk Bed TV's with DVD Players
- Exterior Entertainment Center-32" LCD TV & Stereo System with DVD player (319SK & 319DS only)
- Exterior Entertainment Center-24" LCD TV & Stereo System with DVD player (210QB, 220QB, 260QB, 290QB, 320BH only)
- Child Safety Net & Ladder
- Cabover & Bedroom Fantastic Power Vent Fans
- Onan 4.0KW Gas Generator
- Air Assist Suspension (Ford E450 only, Mandatory on 319DS, 320BH)
- 6 Gal DSI Gas/ Electric E.I. Water Heater
- Second Auxiliary Battery
- Side View Cameras
- Heated, Remote Exterior Mirrors
- 4-Point, Automatic Hydraulic Leveling Jacks
- "Campin Cozy" Cold Weather Package: Dual Pane Windows & Heated Tanks
- Rear ladder
- Spare Tire
- Single Power Entrance Step
- Molded Fiberglass Front Cap (Mandatory with Paint Job)
- Partial Body Paint (Front Cap Option Required)
- Full Automotive Body Paint (Front Cap Option Required)
- Aluminum Rims
- Convection Microwave Oven
- Exterior "Camp Kitchen" - Refrigerator, Grill, Sink and Countertop Area (319SK & 319DS only)
- Electric Fireplace (319SK & 319DS only)
- Dual Recliners (IPO Dinette/Sofa on 210QB, 220QB & IPO Sofa on 319SK & 319DS)
- Sofa with two tables IPO Dinette (220QB only)
- Canadian 240Z Canadian RV Compliance (Motorhome conversion only)
- Canadian Compliance (Speedometer / Lights)

XL PACKAGE

- Upgraded Ultra Leather Sofa
- 2-Tone Ultra Leather Seat Covers
- Wood Grain Dash Applique
- Cabover Privacy Curtain (N/A with Front Entertainment Center)
- Gloss Black Refrigerator Insert Panels
- Bathroom Medicine Cabinet with Makeup Light & Mirror
- Upgrade Countertops with Under-mount Composite Sink
- Composite Lids for Trunk Boxes in Exterior "Warehouse" Storage Compartment
- Molded Fiberglass Front Cap
- Fiberglass Style Bezel at Top of Rear, Exterior Wall
- Painted Bumper
- Molded Fiberglass Running Boards with Wheel Well Flair
- Upgraded Kitchen Faucet
- Upgraded Bathroom Faucet

LEPRECHAUN

By Coachmen

EXTERIOR OPTIONS



Standard Graphics



Partial Body Paint



Harbor Mist Full Body Paint



Cabernet Full Body Paint

INTERIOR OPTIONS

Redwood



Zanzibar Beige



Copper Geo



Learn More

Scan this barcode using a QR Reader on your smart phone to learn more about Forest River.



A Berkshire Hathaway company.

Please note: Due to continuous improvements, standard equipment, optional equipment, fabrics and wood grains are subject to change. Please visit www.coachmenRV.com or your local dealer for details.



A Division of Forest River, Inc.

Coachmen Recreational Vehicle Company
P.O. Box 30, Middlebury, IN 46540

To learn more about Coachmen RV and our products and see how Coachmen is making the easy life easier, visit www.coachmenrv.com