

FIFTH
WHEELS

CRUSADER

CRUSADER



A HIGHER STANDARD

PRIME TIME
Manufacturing

CRUSADER

Within us all, there's a calling to achieve ever-greater things; a search for a higher standard. In creating Crusader, we asked our engineers and design team to throw caution to the wind and engage in serious "outside the box" thinking. We challenged them to think beyond the status quo and reach for product innovations not currently offered. We said, "Make Crusader a new icon for the 21st century." Needless to say, they took the challenge to heart.

The result of their efforts represents a new standard in fifth wheels — A HIGHER STANDARD — Crusader.



**A HIGHER
STANDARD**

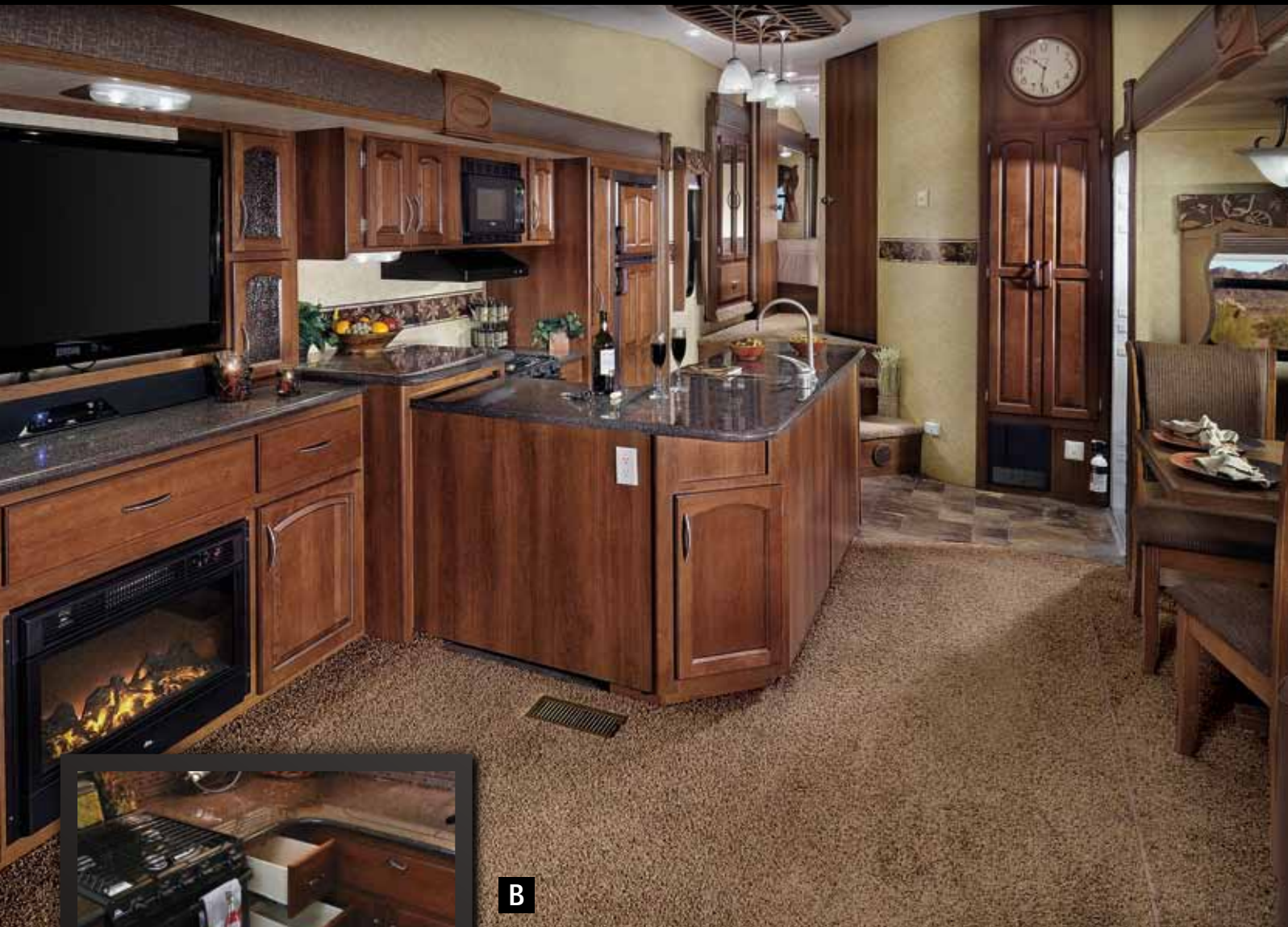


325 RES in Autumn Mocha Décor

Crusader is unlike any fifth wheel in its class. On the outside, our fifth wheel experts have combined advanced engineering and design with best-in-class features to create a fifth wheel that looks great, tows easily, and maximizes convenience. On the inside, Cherry hardwood cabinetry and solid surface kitchen countertops carefully work together to make a lasting first impression. Your comfort and relaxation will be guaranteed with an abundance of upgrades such as a 42"

LCD television, RCA home theatre DVD system, residentially inspired furniture, and Crusader's Ever Rest® select foam mattress. Your long-term peace of mind is assured with Crusader's durable ETERNABOND construction and Leak Guard protection process.

Inside, outside, or under the surface, if you want a better fifth wheel – one built to a higher standard – you want Crusader.



A HIGHER STANDARD THAT WILL IMPRESS AT EVERY TURN

Within seconds of entering, experienced RV'ers will recognize Crusader's subtle details of excellence, best-in-class features, and residential appointments.

B

- A. Full extension drawer guides allow full access to Crusader's extra large storage areas.
- B. The Crusader 320 RLT combines excellent kitchen storage and counter space with a user-friendly entertainment area.

- C. Handy pull-out baskets offer convenient storage thru-out Crusader.
- D. A 32" LCD television is perfectly positioned in the 290 RLT. The huge lower cabinet maximizes storage and is complimented by the large buffet countertop.

- E. "Suite Slide" offers premium storage and livability not found on most mid-profile fifth wheels.
- F. The king shower, Skyview® skylight, 6'8" of headroom, and STOR MOR® shower caddy deliver on Crusader's promise of "A Higher Standard".



Many models offer the innovative *Blanket Bin* headboard storage.

CRUSADER

A HIGHER STANDARD



Universal Docking Station



Easy-To-Clean Saddlebags Offer Convenient Storage



Residential Air Mattress Hide-A-Bed with Oversized Storage Drawer



Deluxe Skyview® Skylight and STOR MOR® Shower Caddy



Best-In-Class Pass Thru Storage with Strut



Bus Style Slam Latch Baggage Doors



Designer Aluminum Wheels with Rubberized Suspension



Convenient Detachable Marine Power Cord



Extended Drip Spouts



Electric Stabilizing Jacks



Optional Bumper Mounted Swing Arm Grill



QUIET COOL® Air Conditioner is 75% Quieter, 25% More Efficient



JPER TURN® Front Cap Has 88 Degree Turning Radius



Optional Outdoor Kitchen Features Unique Stone Facade

STANDARDS & OPTIONS

CONSTRUCTION

- Gel Coated Fiberglass Exterior
- 5" Truss Rafters on 16" Centers with 3/8" WALK ON Decking
- One Piece Rubber Roof with 12 Year Warranty
- Upgraded Oetiker Water Line Fittings with 25 Year Warranty
- Easy Access Low Point Drain Switches
- Easy Access Fresh Water Drain Switches
- Electric Slideouts
- Fresh Water Capacity - 60 Gallons
- Waste Water Capacity - 35 Gallons
- Gray Water Capacity - 70 Gallons

EXTERIOR STANDARDS

- SUPER TURN® Aerodynamic Front Cap
- EZ Lube Greasable Axle Hubs
- Oversized Pass Thru Baggage Doors
- Extended Drip Spouts
- Black, Dark Tinted, Radius Safety Glass Windows
- 30# LP Bottles - Weight Distribution Design
- Quick Connect® Exterior LP Connection
- Outside Speakers
- Folding Grab Handle
- 30" Radius Entry Door
- Outside Shower with Detachable Hose
- Digital Compatible Roof Mounted Antenna
- Hi-Rise Triple Entry Step
- Outside Television Hook-Up
- ABS Hitch Cover

APPLIANCES/EQUIPMENT

- 15,000 BTU Air Conditioner
- 35,000 BTU Hi Capacity Gas Furnace
- 3-Burner Range with Large Oven
- Range Hood with Light and Exhaust
- 8 Cubic Foot Double Door Refrigerator
- 6 Gal. Gas/Electric W/H with DSI
- 18 Gal./Hr. Quick Recovery Mode for Water Heater
- Water Heater Bypass
- Hi Capacity Water Pump
- 12V Electrical System with 55 Amp Converter
- EZ Winterization Hook-Up
- Washer/Dryer Prep (Bed Slide Models)

INTERIOR STANDARDS

- Solid Cherry Hardwood Cabinet Doors
- Solid Cherry Hardwood Drawer Fronts
- Solid Wood Core Cabinets
- Predrilled and Screwed Cabinetry
- Ball Bearing Extended Drawer Glides
- "Video Pro" Separate Cable / Satellite Prep
- Upgraded Residential Carpet
- Deep Overhead Cabinets in Slide Out (where applicable)
- Swivel Chairs (where applicable)
- Decorative Wall Light in Slide Out
- Large Panoramic Slide Room Windows
- Premium Vinyl Flooring
- Pleated Shades

KITCHEN

- Polished Nickel Fixtures & Hardware
- Deep, Double Bowl Kitchen Sink
- Hi Rise Metal Kitchen Faucet
- Residential Style Microwave
- Large Size Trash Can In Dedicated Area
- Oversized Pots N Pans Drawer
- Slide Out Pantry (most models)

BATHROOM

- King Size Shower (most models)
- Glass Shower Enclosure (most models)
- ABS Tub Surround
- Deluxe Skyview® Skylight Over Tub
- Power Vent Fan
- Porcelain Toilet with Foot Flush
- STOR MOR® Shower Caddy
- Large Bathroom Sink
- Medicine Cabinet with Mirror

BEDROOM

- Dual Wardrobes (most models)
- Underbed Storage with Struts
- Residential Bedspread
- Bedroom Heat and A/C Vents

SAFETY EQUIPMENT

- CO Detector
- LP Detector
- Fire Extinguisher
- Propane Alarm
- Smoke Alarm

"ADVANTAGE PACKAGE" **

- ETERNABOND CONSTRUCTION Featuring:
 - Laminated Aluminum Framed Side Walls
 - Laminated Aluminum Framed End Walls
 - Laminated Aluminum Framed Slide Out Walls and Roof
- Hartford Cherry Cabinetry
- Solid Surface Kitchen Countertops
- Matching, Flush Mount Sink Covers
- Universal Docking Center
- Bus Style Slam Latch Baggage Doors
- Thermal Package Plus Featuring:
 - Enclosed and Heated Underbelly
 - Heated Holding Tanks
 - Enclosed Dump Valves
 - Heated Dump Valves
 - Zero Degree Extended Season Enjoyment
- Black Tank Flush
- Roof Ladder
- Spare Tire with Tire Carrier and Cover
- Radial Tires with Designer Aluminum Rims
- Air Mattress Hide-A-Bed
- Detachable Power Cord

- Ever Rest® Select Foam Mattress
- EZ Flex Rubberized Suspension
- 1 Year Emergency Roadside Assistance Plan
- Leak Guard Assurance Process

"POWER PACKAGE PLUS" **

- RCA AM/FM/CD/DVD Home Theater System
- RCA SuperSound® Sub Woofer
- Bedroom AM/FM/CD Stereo with Speakers
- 32" LCD Television
- One Touch® Electric Stabilizer Jacks
- One Touch® Electric Awning
- QUIET COOL® Premium Air System
- 50 AMP Electrical Service
- Prep For Bedroom Air Conditioner

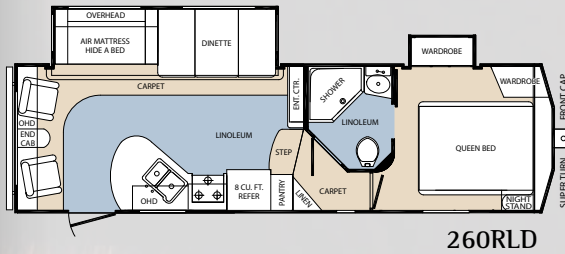
OPTIONS

- 16" Aluminum Rims (Mandatory on 320, 325, 355)
- Free Standing Table with 4 Chairs
- 42" LCD TV (320, 325 Only - Mandatory)
- Bumper Mounted Swing Arm Grill (N/A 260)

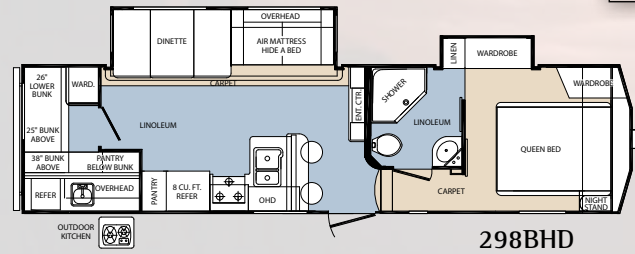
**Mandatory Effective 1/1/12

SPECIFICATIONS

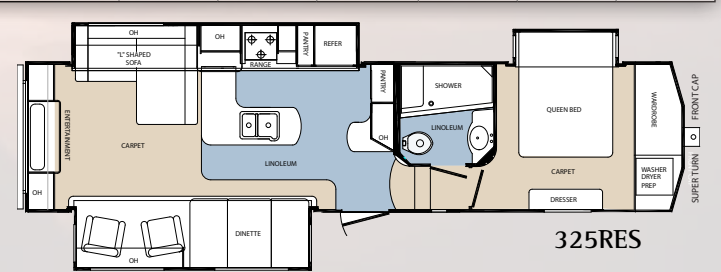
	260RLD	290RLT	298BHD	320RLT	325RES	355BHQ
Length	29' 11"	31' 11"	33' 8"	36' 4"	35' 6"	39' 5"
Height	11' 6"	11' 6"	11' 6"	12' 5"	12' 5"	12' 7"
Hitch	1,321	1,336	1,137	1,708	1,557	1,790
Ship Weight	7,764	8,283	8,304	10,113	10,337	11,750
Carrying Capacity	2,298	1,853	2,955	1,957	1,582	2,040



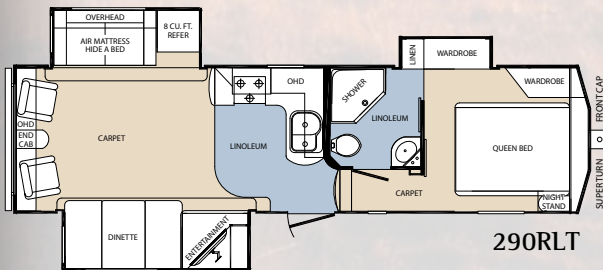
260RLD



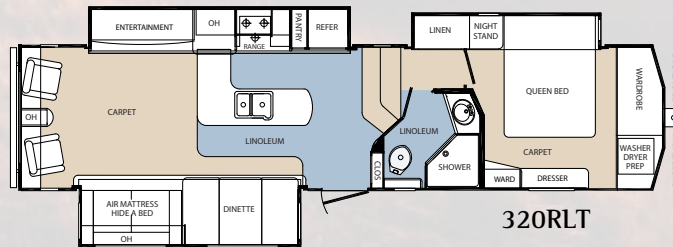
298BHD



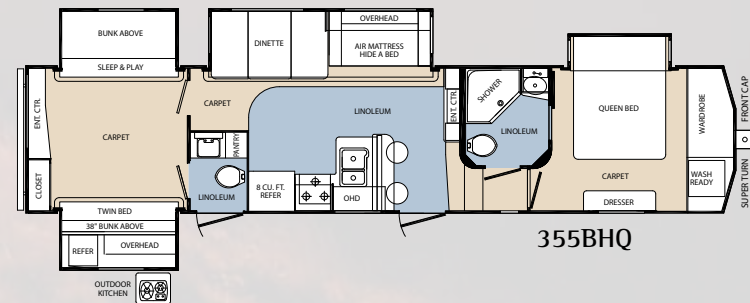
325RES



290RLT



320RLT



355BHQ

2010 & 2011 DSI QUALITY CIRCLE AWARD WINNER

Prime Time Manufacturing is proud to be recognized as an industry leader in value, reliability, and overall quality by the Recreational Vehicle Dealers Association. This was accomplished by committing ourselves to "A Higher Standard" in design, construction, testing, and customer service. Check us out - we know you'll be impressed!



Seal Tech Air Pressure Test



ETERNABOND Construction



Rain Bay



Seek-A-Leak Pressure Test



65 Point Secondary PDI



Web Based Customer Service



Executive Quality Audits



Advanced Engineering



www.primetimerv.com



RV TECHNICAL & ROADSIDE ASSISTANCE

With the purchase of this recreational vehicle, you receive the benefit of our exclusive around the clock Emergency Roadside Assistance and Product Support Plan. Through our partnership with Coach-Net, you have access 24 hours a day, 7 days a week to RVDA/RVIA Trained Technician and Service personnel to assist with service during your time of need.

HERE'S JUST A SAMPLE OF THE BENEFITS*

- ✓ Mobile Mechanic
- ✓ Free Jump Starts
- ✓ Tire Changes
- ✓ \$2000 Trip Interruption
- ✓ Appointment Assistance
- ✓ Lock Out Service
- ✓ Fuel Delivery
- ✓ Service Assistance
- ✓ Custom Trip Routing and Maps
- ✓ 24 Hour Emergency Messaging

*Exclusions and restrictions apply. See member guide for details.



Forest River, Inc. encourages our customers to purchase their Forest River products from a local dealership whenever possible for the following reasons:

- 1) Forest River, Inc. dealers are independently owned and operated businesses so priority service and scheduling is at their discretion and is often provided to customers that purchased their unit at that dealership.
- 2) Purchasing locally allows customers to establish meaningful relationships with a dealer, enhancing the RV experience through assistance with product questions, user tips or RV regulations for your state or country, and much more!
- 3) Canadian customers must meet requirements to bring an RV purchased out of the country to their home. These requirements may involve additional inspections and certifications, taxes and fees. Your local Canadian Dealer is a professional at meeting these requirements.
- 4) Scheduling timely warranty repairs and adjustments through a local dealership provides far greater flexibility and convenience to you, the customer!

It is the goal of Forest River, Inc. that all of our RV owners fully enjoy the RV experience and that customer satisfaction meets or exceeds their expectations!



Learn More
Scan this barcode using a QR Reader on your smart phone to learn more about Forest River.



A Berkshire Hathaway company.

All illustrations and specifications contained in this literature are based on the latest product information at time of publication. Prime Time Manufacturing reserves the right to make changes in prices, colors, materials, equipment and specifications at anytime, without notice, and assumes no responsibility for any error in this literature. All units are shipped F.O.B. point of manufacture.