



MAKE AN IMPRESSION



American
REVOLUTION
2011

2011 American Revolution



SET NEW LIMITS.

The American Revolution is so much more than a wildly luxurious coach. It's a bold sign of success, independence and innovative style. There's simply no other coach that can match its knock-out good looks, masterful technology and tactile opulence.



AMERICAN REVOLUTION 42W shown in Impetuous Pewter interior décor with Mahogany wood cabinetry.



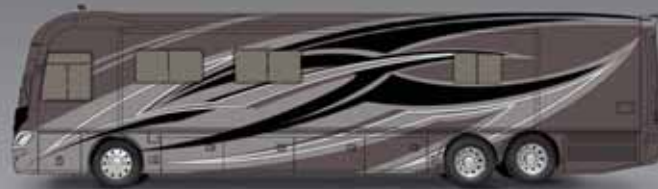
Exterior Graphics



Granite Pearl



Gold Starfire



Onyx



Silver Merlot

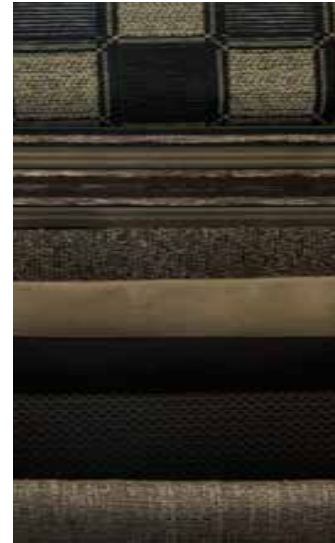


White Shadow

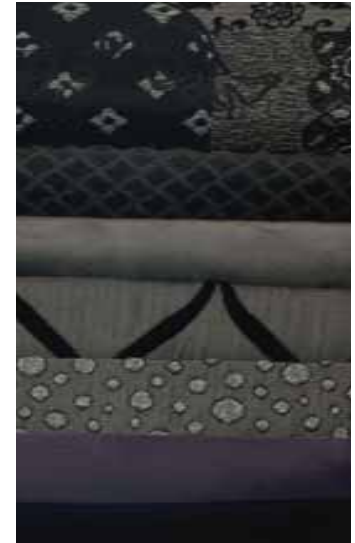
Interior Décor



Faded Linen



Golden Suede



Impetuous Pewter

Solid Wood Cabinetry Choices



Almond Mocha Glaze



Regency Cherry With
Ebony Glaze



Mahogany

Standard Features & Options

STANDARD FEATURES

INTERIOR THROUGHOUT

- Automatic Generator Start System
- 84" Interior Ceiling Height
- Complete TuffPEX Plumbing System
- Manual Double Roller Blinds
- Deluxe Roller Bearing, Full Extension Drawer Guides & Transit-Ship Locks
- (3) Roof Mounted A/C High Efficiency w/Front Solar Panel and Quiet Design Ducting
- Residential Carpeting
- Hardwood Cabinet Doors/Drawers
- Padded Vinyl Ceiling
- Power Vent w/Rain Sensors (All Vents, Galley, Bath & Shower Area)
- Raised Panel Cabinet Doors
- Solid Wood Drawers
- Centralized Control Panel Display at Entry
- Tank Level Monitor (Interior Only)
- Central Vacuum System w/Accessory Kit
- Stacked Washer & Dryer

DRIVER CONVENIENCE

- Dual Monitors; Dash Stereo AM, Fm, Single CD, MP3, Camera Monitor w/One Way Audio
 - Integrated GPS Navigation System
 - Rear Vision System w/One-Way Audio (Camera & Monitor)
- Side View Cameras
- Denso Climate Control System
- (2) Auxiliary 12V Dash Receptacles
- Adjustable Brake & Throttle Pedals
- Auxiliary Fog Lights
- Auxiliary Driving Lights
- Auxiliary Start Switch
- Battery Disconnect System
- CB Radio Ready
- Driver/Front Passenger Map Lights
- Villa® Ultraleather™ Driver Seat w/Manual Lumbar/6 Way Power/Heat/Adjustable Armrest (Integrated Lap & Shoulder Belts)
- Villa® Ultraleather™ Passenger Seat w/6 Way Power/Electric Footrest (Integrated Lap & Shoulder Belts)
- I.C.C. Light Switch
- Electric Step Well Cover w/Lighted Step Well
- Soft Touch Smart Wheel
- Tilt & Telescoping Steering Wheel w/Adjustable Dash Gauge Package

GALLEY

- Base Cabinet Storage for the Range & Galley Sink Covers
- Ceramic & Decorative Glass Tile Backsplashes
- GE® Convection Microwave Oven w/Built-in Range Hood
- Polished Corian Solid Surface Dinette Table, 2

- Free-Standing Chairs & 2 Folding Chairs
- Faucet w/Pull-Out Sprayer
- Large 70/30 Split Solid Surface Sink
- Residential Refrigerator
- Recessed Sealed Burners Cook Top (Stainless Steel, 3 Burner)
- Polished Corian Solid Surface Galley Counter Top
- Polished Corian Solid Surface Range & Sink Covers

LIVING ROOM

- Sony® 32" LCD HDTV in Front Overhead
- Sony® 40" LCD HCTV in MidShip
- Sony® Blu Ray DVD Home Theater System w/5.1 Dolby® Surround Sound Speakers
- Villa® Ultraleather™ Love Seat
- Villa® Ultraleather™ Sofa Sleeper w/Air Mattress
- Coffered Ceilings
- Dimmer Switched Halogen Lighting

BEDROOM

- Sony® Up Scaling DVD Player
- Sony® 32" LCD HDTV
- 60" X 80" Queen Bed Innerspring Mattress
- Cedar Lined Wardrobe
- Manual Double Roller Blinds
- DSS 2nd Receiver Ready (Coax Cable)
- Polished Corian Solid Surface Nightstand & Base Cabinet Counter Tops
- Dimmer Switched Halogen Lighting

BATHROOM

- Deluxe Medicine Cabinet
- Hand Held Shower Head
- Residential China Bowl Flush Toilet w/Hand Sprayer (Select Models)
- Polished Corian Solid Surface Lavy Top w/Porcelain Bowl & Residential Faucet
- Shower Door w/Obscure Glass
- Skylight in Shower
- Vacuum Flushed Toilet (Select Models/ Locations)

SAFETY/CONVENIENCE

- Multiple Seatbelt Locations
- Carbon Monoxide Detector/Alarm
- Centralized Control Panel Display Center
- Energy Management System (EMS)
- Fire Extinguisher
- Propane Detector/Alarm
- Smoke Detector/Alarm

EXTERIOR THROUGHOUT

- Large Pass Through Compartments
- 4 Point Automatic Levelers
- (2) 2000 Watt Pure Sine Wave Inverters w/Remote
- KVH® R5 In-Motion Domed Digital Satellite Antenna

- (8) 6 Volt House / Maintenance Free AGM Batteries
- Rear Rock Guard w/Logo
- Diamond Shield Clear Front Protective Mask
- 50 Amp Service
- Electric Power Cord Reel
- "Bus Style" Large One-Piece Windshield
- Chrome "Bus Style" Heated Mirrors w/Remote Adjustment & Turn Signal Indicators
- Domed One-Piece Fiberglass Roof w/Radius Corners
- Holding Tanks San-T-Flush™ System
- Dual Pane Windows w/Screens
- Electric Patio Awning
- Electric Front Entry Door Awning
- Electronic Battery Control Center Energy Management System (50 Amp)
- Exterior Convenience Light at Dump Valves
- Fiberglass Front/Rear Caps w/High Mounted Taillights
- Large Windshield Washer Bottle w/Sprayer Nozzles
- Multi Point Water Pump Switching
- Onan® 8.0 KW Quiet Diesel Generator
- Power Generator Slide
- Sound Insulation Front & Rear
- Top Mounted Intermittent Wipers
- Utility Light Front & Rear
- Variable Speed Water Pump
- Window Awnings (Bedroom & Front Roadside Windows)
- Sloped Roof on Slide out Boxes
- Surge Guard RV Power Protection
- Waste Away Sewer Hose Manager

AUTOMOTIVE

- (2) 12V Chassis Batteries (1000 Cold Cranking Amps Each Battery)
- 15,000 lb Weight Distributing Hitch Receiver w/7 Pin Electrical Hook-up†
- 170 Amp Alternator
- Allison® 3000 MH, 6 Speed Automatic Trans.
- Anti-Lock Brake System (ABS)
- Full Air Brakes w/Automatic Slack Adjusters
- I-Beam Suspension w/Bilstein® Shocks
- Side Radiator Configuration
- Spartan® Modular Chassis w/450HP ISL Cummins® Engine
- Aluminum Wheels (6)
- Mud Flaps (4)

BODY STRUCTURE

- Aluminum Interlocking Floor/Wall/Ceiling Framing
- Heated Water & Holding Tank Compartments
- Liberty Chassis (Fleetwood RV Exclusive)
- Steel Surface on Front Bulkhead/Engine Frame

- Vacu-bond® Insulated Storage Area
- Vacu-bond® Sidewall, Roof & Floor Construction

SAFETY/CONVENIENCE

- (4) Turn Signal Lamps on Each Side of Coach
- 30" Front Entry Door w/Dead Bolt
- Front & Rear Docking Lights
- Illuminated Entry Assist Handle
- Porch Light
- Power Entry Step
- Automotive Safety Glass
- Daytime Running Lights

STORAGE

- Ext Side Hinged Storage Doors
- Lighted Luggage Compartments
- Pass-Through Compartments

OPTIONS

INTERIOR

- Vented Combination Washer/Dryer
- Washer/Dryer Ready

LIVING ROOM

- Villa® Ultraleather™ Wrap Around Dinette Ensemble
- Villa® Ultraleather™ Sofa Sleeper w/Air Mattress - Passenger Side (Only w/ Dinette Ensemble on W Model)

GALLEY

- Dometic® 14cf Side-by-Side Stainless Steel Refrigerator
- Recessed 3 Sealed Burner, Stainless Steel Range w/Oven & Solid Surface Covers
- Fisher & Paykel DishDrawer®
- Electric Cook Top w/Dishwasher (all electric option)
- Electric Cook Top (all electric option)

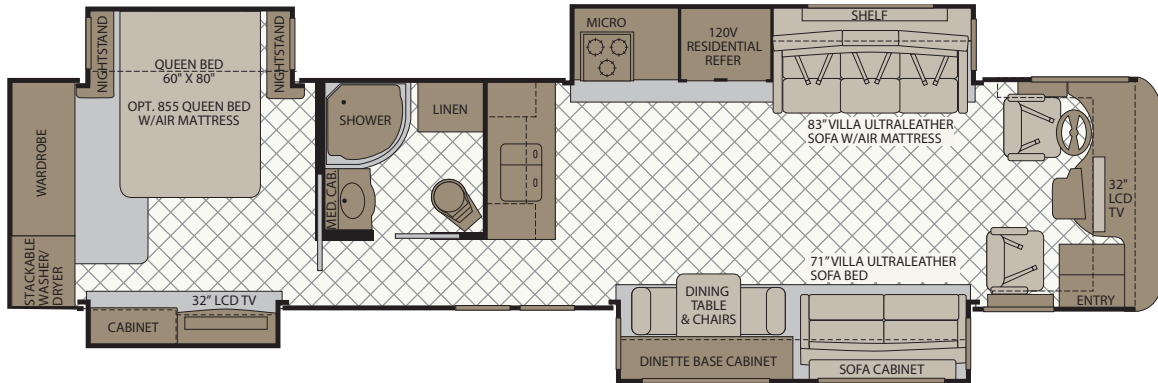
BEDROOM

- Dual Control Queen Air Mattress
- Dual Control King Air Mattress

EXTERIOR

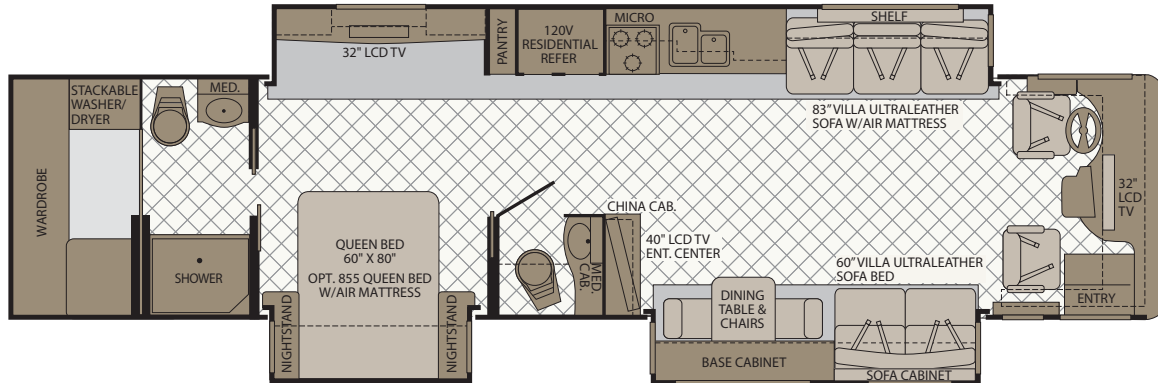
- (5) Exterior Graphics Packages (Electric Awning Included in Graphic Package)
- Power Luggage Door Locks
- Tray Packages:
 - First Full Bay (1) 54" & (1) 36"
 - First Full Bay (1) 90"
 - Second Full Bay (1) 54" & (1) 36"
 - Second Full Bay (1) 90"
- Waste Management Pump
- Sidewall Exterior Entertainment Center (32" Sony® LCD / Sony® AM/FM/DVD Radio)

42Q



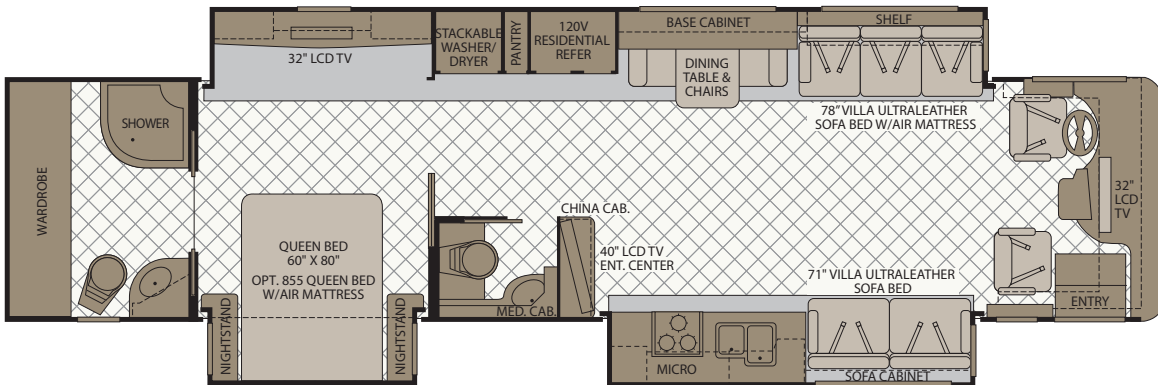
Options available: 107, 115, 125, 126, 127, 129, 828, 855, 856

42T



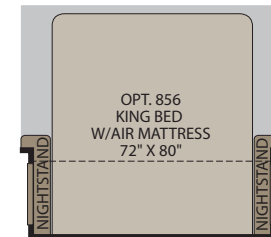
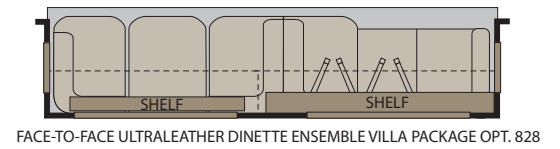
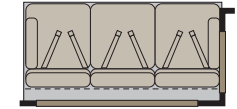
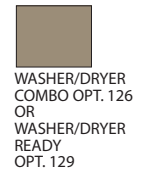
Options available: 107, 115, 125, 126, 127, 129, 828, 855, 856

42W



Options available: 107, 115, 125, 126, 127, 129, 205, 828, 855, 856

Options



Seatbelt configuration may vary depending on options chosen.



Weights & Measurements

DIMENSIONS & CAPACITIES

MODELS	42Q	42T	42W
Overall Length ⁴	42' 11.5"	42' 11.5"	42' 11.5"
Overall Height (with A/C)	12' 11.75"	12' 11.75"	12' 11.75"
Overall Width (maximum) ^{5,6}	101"	101"	101"
Interior Height (maximum)	84"	84"	84"
Interior Width (maximum)	96"	96"	96"
Fresh Water Holding Tank (gal)	100	100	100
Grey Water Holding Tank (gal)	60	60	60
Black Water Holding Tank (gal)	40	40	40
Appliance Propane Tank (gal) (WC) ⁷	28.2	28.2	28.2

Model: Spartan®

Engine: 8.9L Cummins® ISL 450HP w/2 Stage Engine Brake

Transmission: Allison® 3000 MH 6-Speed
w/Electronic Shifter

Alternator: 170 Amp Leece Neville

Torque: 1250 lb-ft

Front Tires: Michelin® 305/70R 22.5H

Rear Tires: Michelin® 295/80R 22.5H

SPARTAN CHASSIS

MODELS	42Q	42T	42W
Engine Displacement (Liters)	8.9	8.9	8.9
Wheelbase (Inches)	302"	302"	302"
GVWR (lbs) ¹	44,600	44,600	44,600
Front GAWR (lbs) ²	14,600	14,600	14,600
Rear GAWR (lbs) ²	20,000	20,000	20,000
Tag Axle (lbs) ²	10,000	10,000	10,000
GCWR (lbs) ³	59,600	59,600	59,600
Hitch Rating Weight (lbs) [†]	15,000	15,000	15,000
Tongue Weight (lbs) [†]	1,500	1,500	1,500
Fuel Capacity (gal)	150	150	150

Liquid Weight Reference:

Water (gal) = (8.3 lbs/3.8 kgs) Fuel (gal) = (6.1 lbs/2.8 kgs) Propane (gal) = (4.2 lbs/1.9 kgs)

Metric Conversion:

Multiply pounds x 0.453 to obtain kilograms. Multiply gallons x 3.785 to obtain liters.

Multiply liters x 61 to obtain cubic inches.

- GVWR (Gross Vehicle Weight Rating) is the maximum permissible weight of this fully loaded motor home. The GVWR is equal to or greater than the sum of the (UVW) unloaded vehicle weight plus the (OCCC) occupant cargo carrying capacity*.
 - GAWR (Gross Axle Weight Rating) is the maximum permissible loaded weight a specific axle is designed to carry.
 - GCWR (Gross Combined Weight Rating) is the value specified by the motor home manufacturer as the maximum allowable loaded weight of this motor home with its towed vehicle. Towing and braking capacities may be different. Refer to Fleetwood and chassis manufacturer's manuals for complete information.
 - Length measured from front bumper to rear bumper (excludes accessories).
 - Excludes safety equipment and awnings.
 - Motor homes feature a body-width over 96" which will restrict your access to certain roads. Before purchasing, you should research any state and/or province road laws which may affect your usage.
 - Tank manufacturer's listed water capacity (WC). Actual propane capacity is 80% of water listing as required by the safety code.
- † The chassis manufacturer recommends the installation of a supplemental brake control system to activate the brakes on the vehicle or trailer you are towing. Hitch receiver ratings expressed are maximum for the hitch receiver installed and may require the purchase of additional equipment that is dependent on the weight of the towed load. Consult with hitch receiver manufacturer for further information.
- * UVW and OCCC are found on the label containing the federal certification tag in each RV.



American Coach



RV OWNERCARE*

Limited one-year/15,000-mile coach warranty and three-year/45,000-mile structural warranty, whichever occurs first, and it is fully transferable for the first 12 months. RV OWNERCARE is one of the RV industry's most comprehensive programs and includes systems, appliances, components and construction, with no deductible and no service charge. RV OWNERCARE coverage is provided from a company that will be around in the future to service your needs. See your nearest American Coach dealer for a full explanation of benefits and restrictions.

CONTACT US

To locate a dealer near you, visit our website at www.americancoach.com or call 1-800-322-8216. We can also be contacted at American Coach Customer Relations, P.O. Box 1007, Decatur, IN 46733.

AMERICAN COACH MOTOR HOME CLUBS

As an American Coach owner, you're invited to become a member of several American Coach motor home clubs. Becoming a club member is the perfect way to meet other American Coach owners who love to travel across America and share in the RV lifestyle. Visit our website at www.fleetwoodrv.com/owners_clubs to learn more and join the fun.

YOUR LOCAL AMERICAN COACH DEALER IS:

IMPORTANT—PLEASE READ

Product information, photography and illustrations included in this publication were as accurate as possible at the time of printing. For further product information and changes, please visit our website at www.americancoach.com or contact your local American Coach dealer. Prices, materials, design and specifications are subject to change without notice. All weights, fuel, liquid capacities and dimensions are approximate. American Coach has designed its recreational vehicles to provide a variety of uses for customers. Each vehicle features optimal seating, sleeping, storage and fluid capacities. The user is responsible for selecting the proper combination of loads (i.e. occupants, equipment, fluids, cargo, etc.) to ensure that the vehicle's capacities are not exceeded.

WHY AMERICAN COACH?



Quality

There's no cutting corners. Skilled craftsmen build every American Coach for maximum durability and longevity.



Trust

More people trust American Coach. After all, we've spent the last 60 years perfecting RVs, earning the loyalty of generations of RVers.



Passion

We're truly passionate about the RV lifestyle. American Coach was founded by RV enthusiasts, and that tradition continues today.



Safety

You've got precious cargo. So we've engineered dozens of innovative safety features into our motor homes to give you more peace of mind.



Service

Help is nearby with 24/7 emergency roadside assistance through **Coach-Net**®*. And when you need an upgrade or repair, you'll find American Coach dealers all across North America ready to assist you.



Warranty

Exclusive RV Ownercare warranty. See your American Coach dealer for details.

*For complete info see your American Coach dealer.

*All 2011 American Coach motor homes include a 1-year membership to Coach-Net.