

**PUMA**

Travel Trailers, Fifth Wheels, Park Trailers & Toy Haulers



**PUMA**  
by Palomino



TRAVEL TRAILERS, FIFTH WHEELS, PARK TRAILERS & TOY HAULERS

# TRAVEL TRAILERS



▲ MODEL 29-DSRE  
SHOWN IN HAZELNUT DECOR



*Play and Sleep Sofa with Bunk Above*

# TRAVEL TRAILER SPECIFICATIONS

MODELS	18-DB	19-FS	19-RL	20-QB	23-FB	25-BH	25-RS	27-FQ	27-KFQ	21-RBS	25-RBSS	25-RDS	26-FBSS	26-RKS	26-RLSS
Hitch Dry Weight (lbs.)	527	560	446	663	673	660	600	510	556	434	615	470	705	635	700
Dry Axle Weight (lbs.)	3784	3710	3802	3476	3985	4090	4430	5609	5563	4392	5542	4884	5460	5422	5470
Total Dry Weight (lbs.)	4311	4270	4248	4139	4658	7450	5030	6119	6119	4826	6157	5354	6165	6057	6170
Carrying Capacity (lbs.)	3178	3252	2735	3486	2552	2872	2532	3141	2327	2145	4580	1653	4662	4275	4652
GVWR (lbs.)	7527	7560	7446	7663	7673	7660	7600	9310	9086	7434	10,775	7470	10,865	10,795	10,860
Tire Size	14"	14"	14"	14"	14"	14"	14"	15"	15"	14"	15"	15"	15"	15"	15"
Interior Height	80"	80"	80"	80"	80"	80"	80"	80"	80"	80"	80"	80"	80"	80"	80"
Exterior Height w/AC	10'5"	10'5"	10'5"	10'5"	10'5"	10'5"	10'5"	10'5"	10'5"	10'5"	10'5"	10'5"	11'1"	11'1"	11'1"
Exterior Width	96"	96"	96"	96"	96"	96"	96"	96"	96"	96"	96"	96"	96"	96"	96"
Overall Length	23'1"	23'0"	23'0"	23'1"	26'10"	26'4"	28'0"	30'1"	32'6"	25'4"	29'4"	28'7"	29'9"	29'8"	30'1"
Fresh Water Capacity (gal.)	51	51	51	51	51	51	51	51	51	51	51	51	51	51	51
Grey Water Capacity (gal.)	42	42	42	42	42	42	42	42	42	42	42	42	84	84	84
Black Water Capacity (gal.)	42	42	42	32	42	32	42	42	42	42	32	42	32	42	32
Awning Size	14'	14'	12'	14'	18'	16'	20'	21'	18'	16'	21'	20'	16'	18'	21'

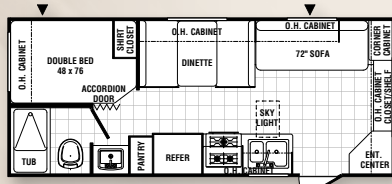
MODELS	28-BHS	28-KRB	29-DSRE	30-DBSS	30-FQSS	30-KDB	30-KFB	30-RKSS	31-KBH	31-BHSS	31-DBSS	31-FKBS	31-RDSS	31-RLSS	31-DBTS
Hitch Dry Weight (lbs.)	640	790	1009	1245	800	742	1155	977	874	890	812	1245	623	1088	879
Dry Axle Weight (lbs.)	5260	6206	6481	7645	5870	6317	6975	5977	7000	6812	6900	7645	6990	6125	7258
Total Dry Weight (lbs.)	5900	6996	7490	8890	6670	7059	8130	6954	7874	7702	8183	8890	7613	7213	8137
Carrying Capacity (lbs.)	1702	3904	3641	1752	4252	3392	3125	3733	2697	3310	2788	1752	3120	3572	2852
GVWR (lbs.)	7640	10,590	11,169	11,405	10,960	10,902	11,315	11,137	11,034	11,050	10,972	11,405	10,783	11,248	11,039
Tire Size	15"	15"	15"	15"	15"	15"	15"	15"	15"	15"	15"	15"	15"	15"	15"
Interior Height	80"	80"	80"	80"	80"	80"	80"	80"	80"	80"	80"	80"	80"	80"	80"
Exterior Height w/AC	10'5"	11'1"	11'1"	11'1"	11'1"	11'1"	11'1"	11'1"	11'1"	11'1"	11'1"	11'1"	11'1"	11'1"	11'1"
Exterior Width	96"	96"	96"	96"	96"	96"	96"	96"	96"	96"	96"	96"	96"	96"	96"
Overall Length	31'6"	31'8"	31'8"	33'10"	32'9"	33'0"	34'9"	34'0"	35'4"	35'4"	34'10"	35'3"	34'6"	35'1"	35'8"
Fresh Water Capacity (gal.)	51	51	51	51	51	51	51	51	51	51	51	51	51	51	51
Grey Water Capacity (gal.)	42	42	42	42	42	64	84	84	64	42	74	84	42	42	42
Black Water Capacity (gal.)	42	42	42	42	42	32	42	32	42	32	84	32	42	42	42
Awning Size	20'	16'	14'	18'	18'	18'	21'	21'	19'	21'	16'	21'	19'	19'	18'



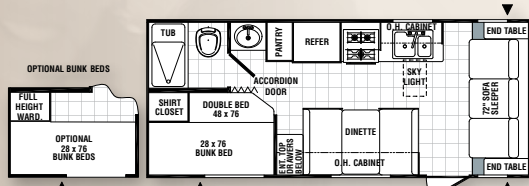
## FUN & CAREFREE

When you're on the prowl for adventure, nothing is better suited than a Puma. These powerfully-built, easily towed travel trailers make the adventure fun and carefree. Puma offers 29 floor plan choices including a variety of kids' bunk room models. Satellite TV hook-up is standard on all models to keep everyone entertained.

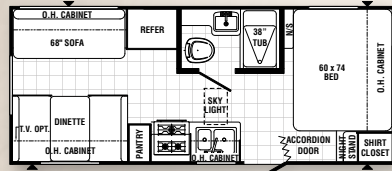
# TRAVEL TRAILERS



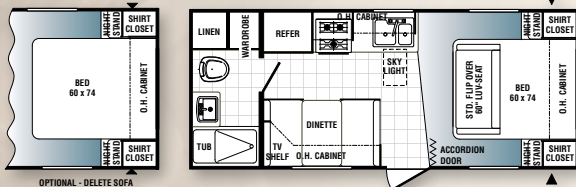
18-DB



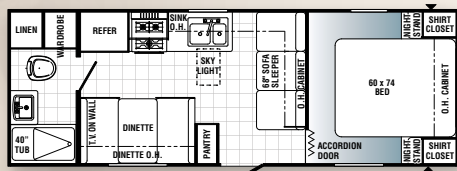
19-FS



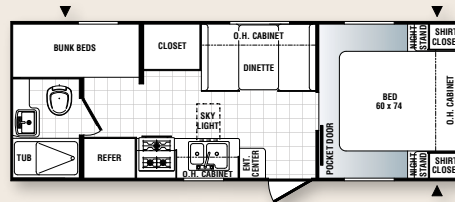
19-RL



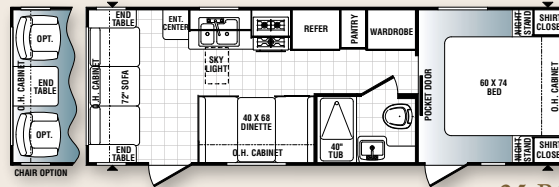
20-QB



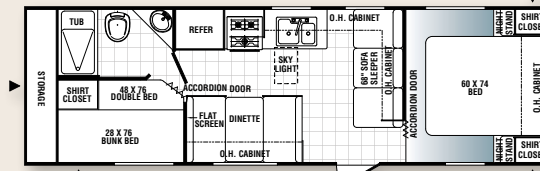
23-FB



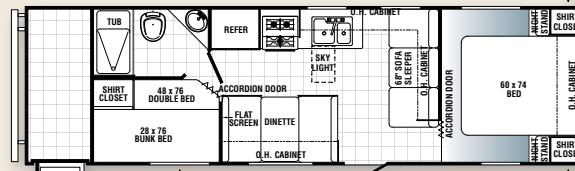
25-BH



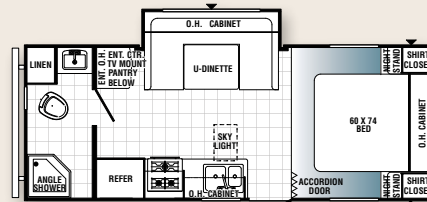
25-RS



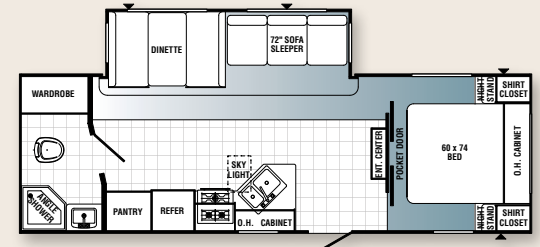
27-FQ



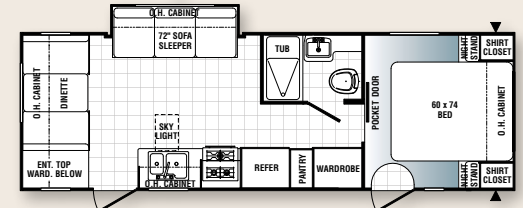
27-KFQ



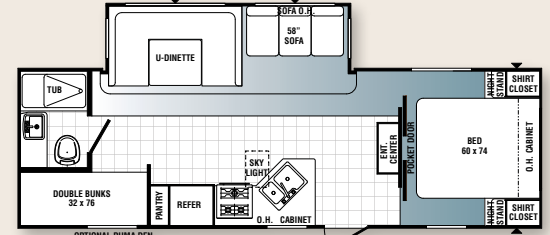
21-RBS



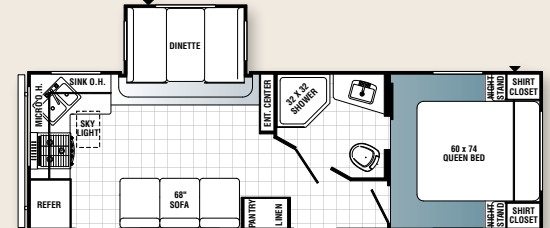
25-RBSS



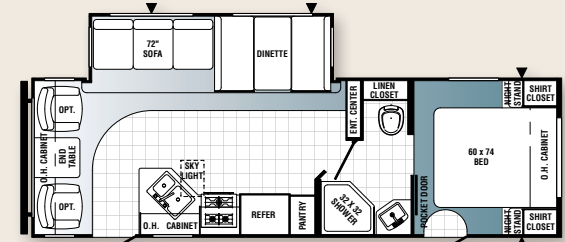
25-RDS



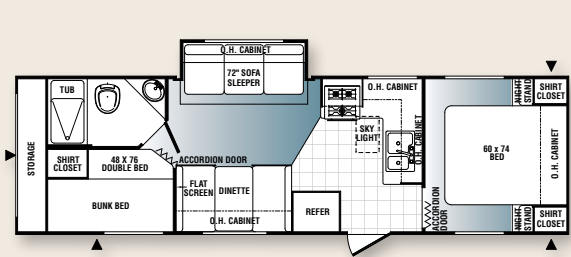
26-FBSS



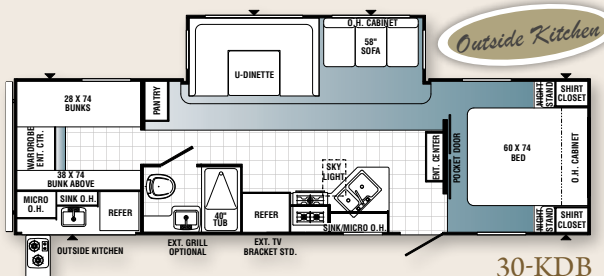
26-RKS



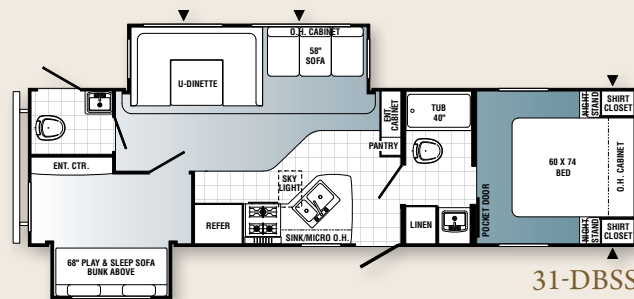
26-RLSS



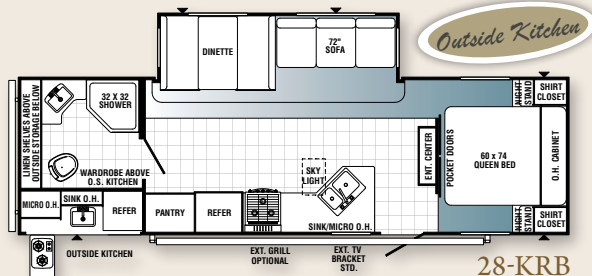
28-BHS



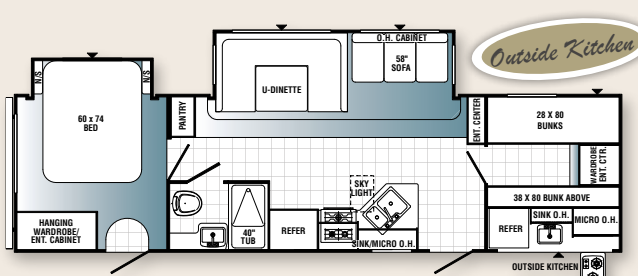
30-KDB



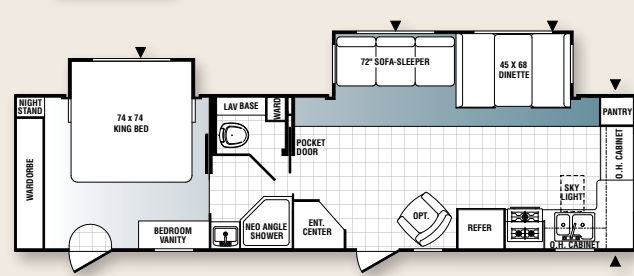
31-DBSS



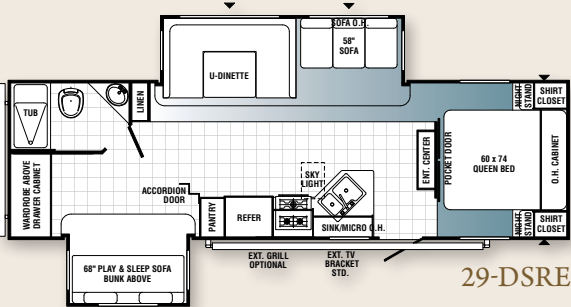
28-KRB



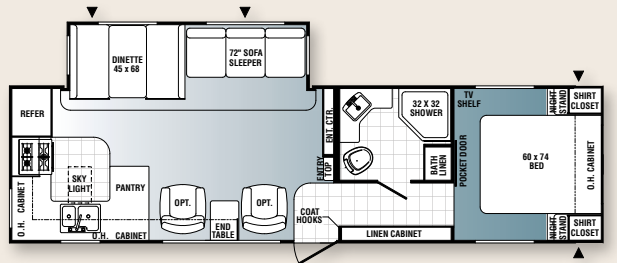
30-KFB



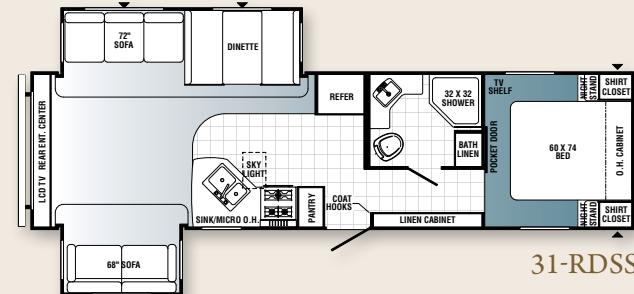
31-FKBS



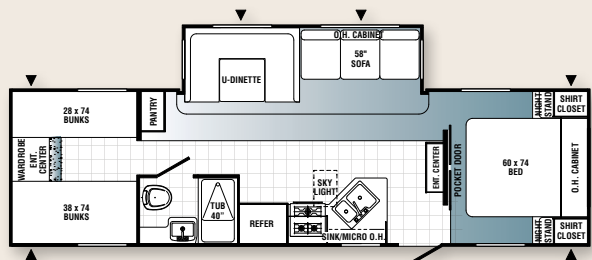
29-DSRE



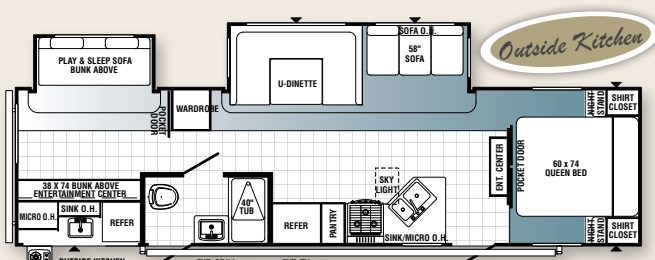
30-RKSS



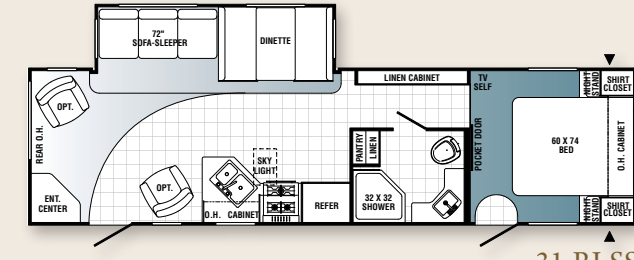
31-RDSS



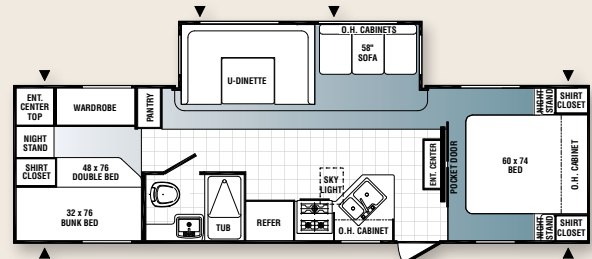
30-DBSS



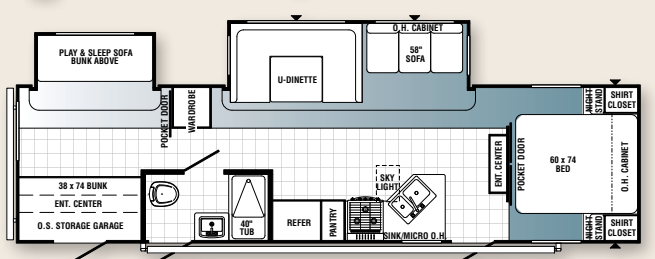
31-KBH



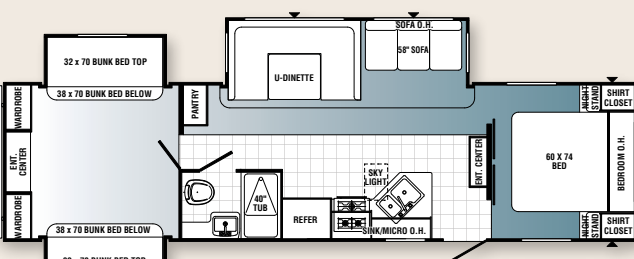
31-RLSS



30-FQSS



31-BHSS



31-DBTS

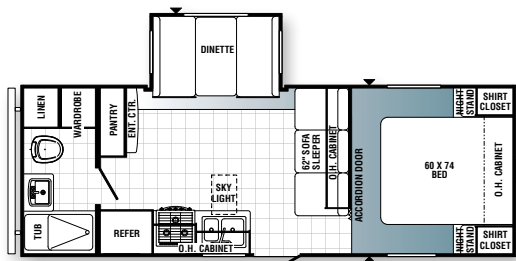
# FIFTHWHEELS

Puma offers seven fifth wheel floor plans. All models are equipped with a multitude of standard features, plus extra options can be added to tailor your Puma fifth wheel to your needs and lifestyle. Interiors feature residential style kitchens with designer linoleum flooring and optional home theater surround sound systems for your enjoyment.

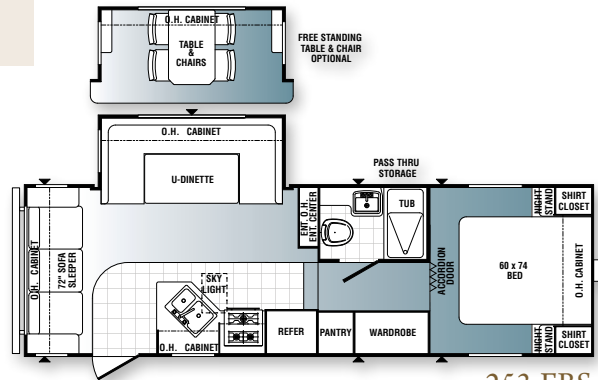


MODELS	230-FBS	245-RKS	253-FBS	259-RBSS	295-BHSS	295-KBH	297-RBDS
Hitch Dry Weight (lbs.)	1107	1080	1070	1391	1016	1016	1442
Dry Axle Weight (lbs.)	4663	4960	5500	5028	7530	7530	7465
Total Dry Weight (lbs.)	5770	6040	6570	6419	8546	8546	8907
Carrying Capacity (lbs.)	1874	1577	1037	4669	2167	2167	2231
GVWR (lbs.)	8107	8080	8070	11,551	11,176	11,176	11,602
Tire Size	15"	14"	15"	15"	15"	15"	15"
Interior Height	80"	80"	80"	80"	80"	80"	80"
Exterior Height w/AC	12'2"	12'4"	12'2"	12'4"	12'4"	12'4"	12'4"
Exterior Width	96"	96"	96"	96"	96"	96"	96"
Overall Length	24'5"	26'1"	27'0"	28'8"	33'7"	33'7"	34'5"
Fresh Water Capacity (gal.)	51	51	51	51	51	51	42
Grey Water Capacity (gal.)	42	84	84	84	42	64	84
Black Water Capacity (gal.)	42	32	32	32	32	42	84
Awning Size	14'	16'	16'	12'	18'	18'	16'

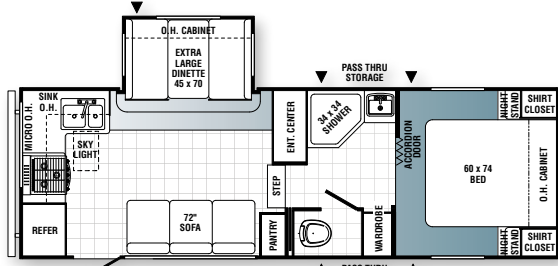
Fifth wheel weights include optional 13.5 BTU roof air, double door refer, oven and awning.



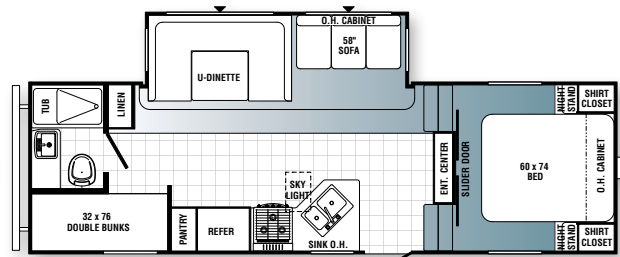
230-FBS



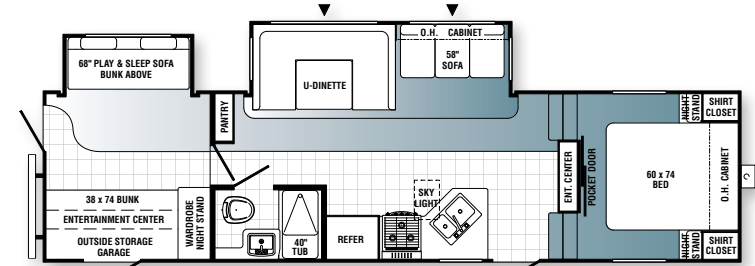
253-FBS



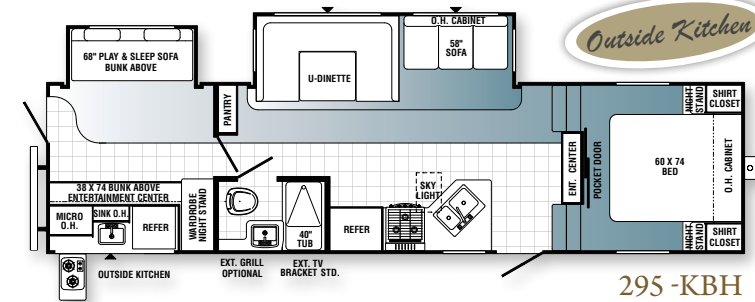
245-RKS



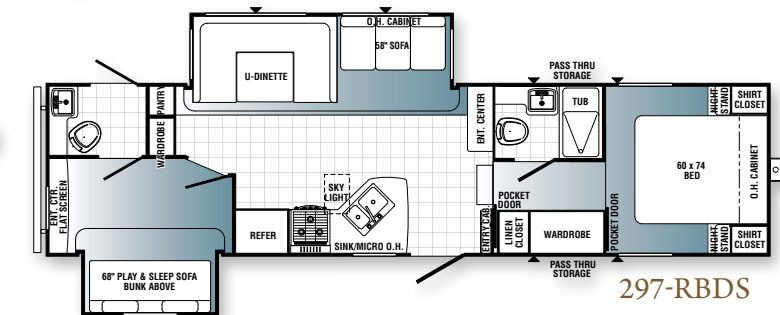
259-RBSS



295-BHSS



295-KBH



297-RBDS





▲ MODEL 253-FBS  
SHOWN IN STONE DECOR



*Roomy Sofa and U-Dinette Slide-Out Shown in Autumn Decor*

# PARKTRAILERS

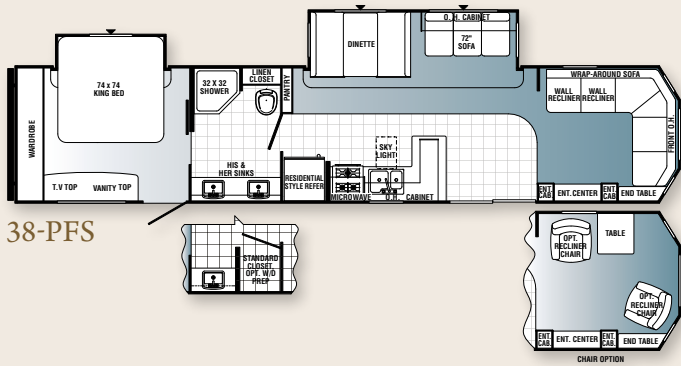


▲ MODEL 39-PBS  
SHOWN IN MAHOGANY DECOR

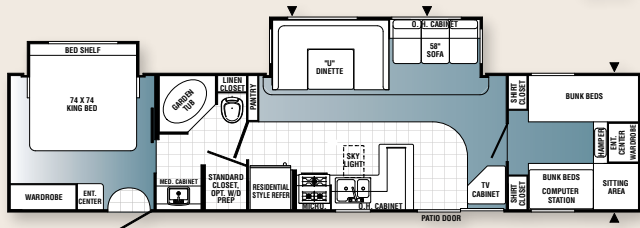


*Model 39-PBH Shown in Ridgewood Blue Decor*

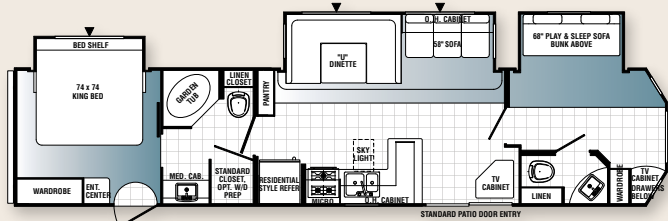
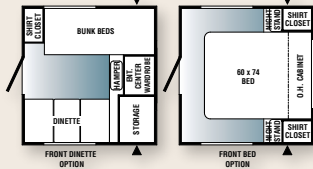




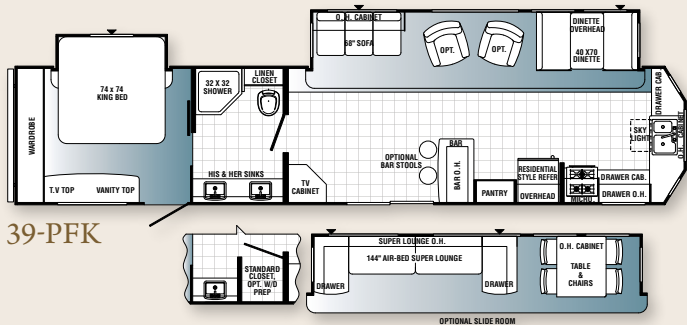
38-PFS



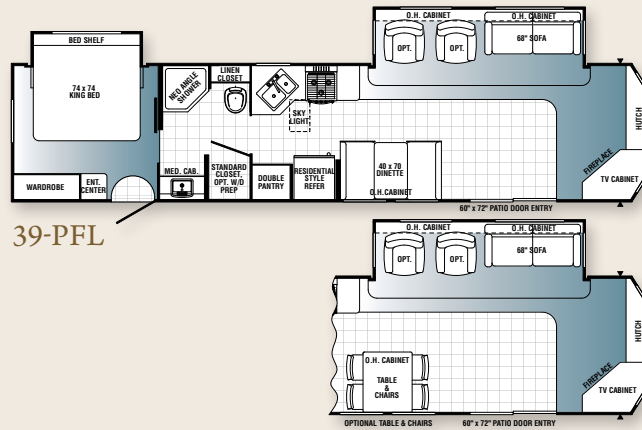
39-PBS



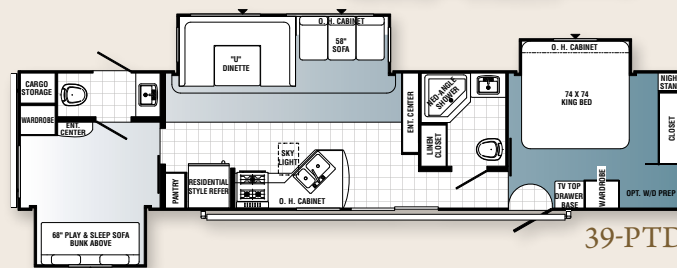
39-PBH



39-PFK



39-PFL



39-PTD

MODELS	38-PFS	39-PBS	39-PBH	39-PFK	39-PFL	39-PTD
Hitch Dry Weight (lbs.)	1245	1455	1245	1590	1555	1405
Dry Axle Weight (lbs.)	7645	6295	7645	7845	7508	8795
Total Dry Weight (lbs.)	8890	7750	8890	9435	9063	10,200
Carrying Capacity (lbs.)	1752	3402	1752	1802	2180	902
GVWR (lbs.)	11,405	11,615	11,405	11,750	11,715	11,565
Tire Size	15"	15"	15"	15"	15"	15"
Interior Height	80"	84"	84"	84"	84"	84"
Exterior Height w/AC	11'1"	11'9"	11'9"	11'9"	11'9"	11'9"
Exterior Width	96"	96"	96"	96"	96"	96"
Overall Length	41'9"	40'2"	40'9"	42'2"	40'4"	42'1"
Fresh Water Capacity (gal.)	42	51	51	51	51	51
Grey Water Capacity (gal.)	84	84	64	84	84	84
Black Water Capacity (gal.)	42	42	42	42	42	42
Awning Size	21'	21'	21'	21'	21'	21'

Park trailer weights include optional 13.5 BTU roof air, double door refer, oven and awning.

## LEISURE

Enjoy your own vacation home with a Puma Park Trailer. They offer the best in leisure living with five spacious floor plans, two bedroom options, and a den option to accommodate your family's needs. Residential style furnishings and a large master bedroom with king size bed ensure your vacationing comfort.

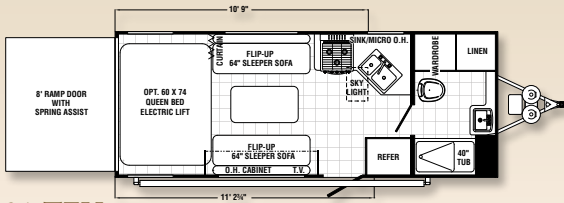


# TOYHAULERS

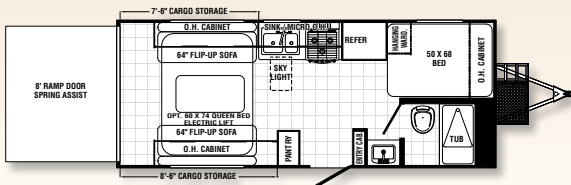


MODELS	21-TFU	21-TFB	27-SBU	30-THSS	30-DSU	298-FQU	356-QLB
Hitch Dry Weight (lbs.)	861	TBD	902	1145	1124	1819	2557
Dry Axle Weight (lbs.)	4672	TBD	6028	6200	6599	5810	6651
Total Dry Weight (lbs.)	6004	TBD	6930	7345	7723	7629	9208
Carrying Capacity (lbs.)	1856	TBD	4082	3098	3378	3433	4432
GVWR (lbs.)	7861	TBD	11,062	11,305	11,284	11,979	14,557
Tire Size	205/75D/14	205/75D/14	225/75D/15	225/75D/15	225/75D/15	225/75D/15	235/80D/16
Interior Height	84"-96"	TBD	84"-96"	80"	84"-96"	8'0"	8'6"
Exterior Height w/AC	12'	TBD	12'	11'1"	12'	12'	13'2"
Exterior Width	96"	96"	96"	96"	96"	96"	96"
Overall Length	24'7"	23'10"	30'5"	35'4"	33'5"	30'11"	35'9"
Fresh Water Capacity (gal.)	51	TBD	100	100	100	51	100
Grey Water Capacity (gal.)	32	TBD	42	42	42	32	42
Black Water Capacity (gal.)	32	TBD	32	32	42	42	32
Awning Size	14'	TBD	16'	16'	18'	18'	21'

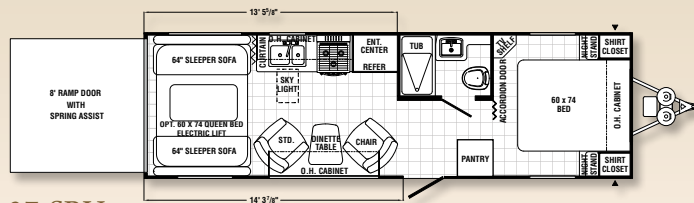
## TRAVEL TRAILERS



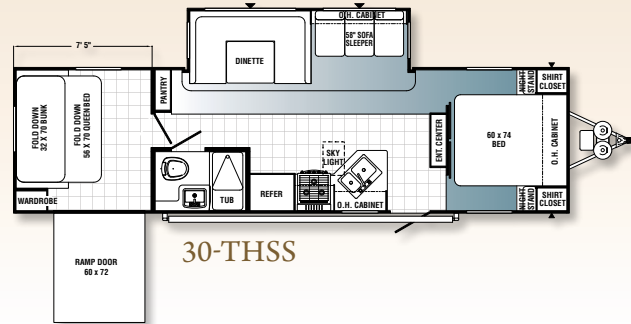
21-TFU



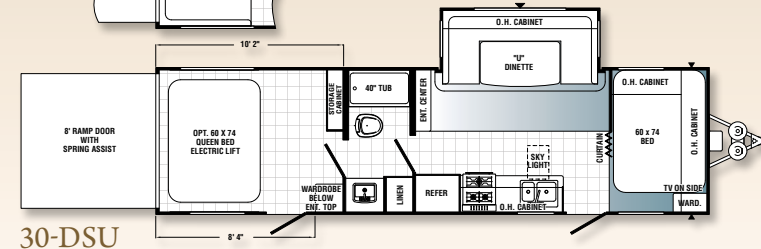
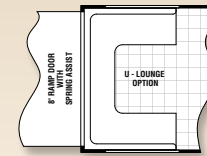
21-TFB



27-SBU

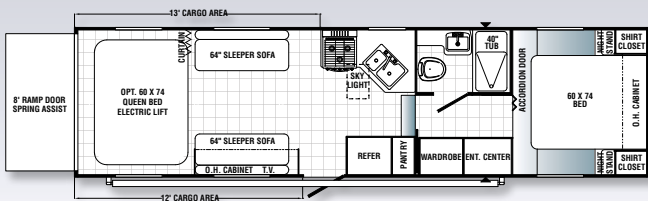


30-THSS

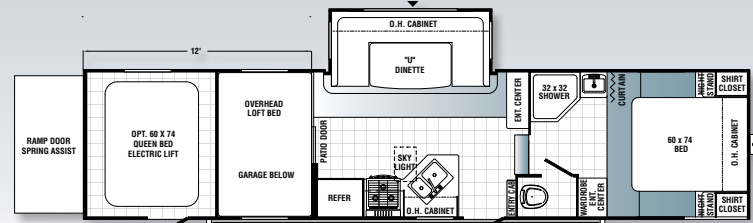
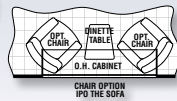


30-DSU

## FIFTH WHEELS



298-FQU



356-QLB



27-SBU shown with sleeper sofa and bunks down for lots of sleeping space

▲ MODEL 27-SBU  
SHOWN IN BARK DECOR



- A.** Rubber Roof (12 year warranty)
- B.** Rugged, Powder Coated Steel I-Beam Frame
- C.** Sturdy .024 Gauge Aluminum Skin
- D.** Exterior Amber Lens Patio Light
- E.** Exterior Hitch Light for Night-Time Hook Up
- F.** 51 Gallon Fresh Water Tank

- G.** Bold Exterior Graphics
- H.** Residential Grade Carpet-21 oz. with Pad
- J.** Sidewall Studding Spaced 16" Apart
- K.** Longitudinal Floor Studding Spaced 12" Apart
- L.** 5/8" One Piece Floor Decking

- M.** New Beauflor® Linoleum Flooring Cold Crack Resistant
- N.** R7 Fiberglass Insulation Cut and Glued Between Sidewall Studs
- O.** 4-1/2" Crowned Truss Roof Rafters
- P.** Steel Crossmembers for Added Support

- Q.** Floor Ducted Heat
- R.** Insulated Wrapped Ducted Air Conditioning Runs
- S.** 3/8" Roof Decking
- T.** Puma "Next Generation" Enclosed and Heated Water Tank
- U.** Radius Exterior Doors

# PUMA FEATURES



*Outside Kitchen*

## SIDE PAW KITCHEN

This premiere outside accessible kitchen is yet another innovation from Team Puma. Every convenience of your inside kitchen is offered for outside family fun. Additionally, the outside entertainment center provides true and complete "tailgating" with all the conveniences of home.



▲ DECORATIVE KITCHEN BACKSPLASH



▲ HARD VALANCES IN ALL BEDROOMS



◀ SOLID WOOD DRAWER FRONTS

▼ KITCHEN SKYLIGHT



# TOY HAULER FEATURES

Make room for your toys with bunks and sofas up or convert the back area to loads of sleeping space or to a dining area.



FUEL STATION



BAGGAGE COMPARTMENT WITH SLIDING TRAY



PUMA DEN DOOR  
(Optional)



REAR STORAGE  
(Standard on 27-FQ, and 28-BHS)



OUTSIDE ENTERTAINMENT  
(Available on Select Models)



MODEL 356-QLB SHOWN IN GARNET  
(ALSO AVAILABLE IN BARK)

## STANDARD FEATURES

### EXTERIOR

- Radius Entry Doors
- Powder Coated Frames
- EZ Lube Axles
- Tinted Safety Glass
- Clamp Ring Windows
- Double Entry Doors (Where Applicable)
- Pass-Thru Storage (Where Applicable)
- Rubber Roof - 12 Year Manufacturer's Warranty
- 9" Three-Tier Steps
- Rain Gutters
- Automotive Style Fender Skirts
- Radius Trunk Doors
- Wrapped Darco Underbelly
- One Piece, 24' Sheet, 5/8" Floor Decking (25 Year Manufacturer's Limited Warranty by Affiliated Resources, Inc.)
- 2 x 3 Flush Joists on 12" Centers
- Lighted Pass-Thru Exterior Compartments (Where Applicable)
- 2-20 lb. Gas Bottles
- 6 Gal. DSI Hot Water Heater
- Rack and Pinion Electric Slide System with Manual Override (Standard on all Slide-Out Models)
- Heavy Duty Storage Door for the Puma Den Option
- Rear Garage Storage Compartment (Standard on the 27-FQ and 28-BHS)
- Clamp Ring Luggage Doors
- Large 31 x 14 Front Pass Thru Baggage Doors (Travel Trailers Only)
- Radial Tires

- Real Wood Drawers
- Kitchen Ball Bearing Drawer Guides
- Plant Built Wood Medicine Cabinet with Mirrored Door
- 60/40 Deep Double Bowl Kitchen Sink
- High Rise Kitchen Faucet
- Arch Top Mortise and Tenon Cabinet Doors with Glaze Insert
- Suburban 3-Burner, High Output Range
- Knife Rack
- Upgrade Window Treatment
- 55 Amp Converter with Battery Charger
- Flip Down Utensil Tray (Kitchen)
- Divided Silverware Drawer (All Models)
- Innerspring Mattress
- Bedroom Carpet
- 1 Sink Cover
- Single Door Refrigerator
- Power Vent in Bath
- 12V Shower Light
- 5 Interior Decors
- Coat Hooks in Entry Way
- Quilted Bunk Mats
- Oil Rub Bronze Hardware, Light and Bath Fixtures
- Cabinet Doors under Dinette Seats
- Upgraded Carpet (21 oz.)
- Upgraded Residential Beauflor® Linoleum
- Full Length Wardrobe and Shirt Closet in Front Bedrooms (Travel Trailer Only)
- Lambrequin Window Treatments (Living Room only)
- Solid Wood Drawer Fronts
- Kitchen Skylight
- Decorative Kitchen Splashboard
- Hard Valances in all Bedrooms

### STANDARD SAFETY FEATURES

- CO2 Detector
- LP Leak Detector
- Fire Extinguisher
- Smoke Detector

### INTERIOR

- 80" Interior Height
- Ventilated Side Windows in all Slide-outs
- Insulated Duct A/C (All Models)
- Floor Ducted Heat
- 30,000 BTU Furnace
- Flush Floor Slide-Outs
- 16" Deep Overhead Cabinets in Super-Slide Models

## TRAVEL TRAILERS & FIFTH WHEELS

### OPTIONS

- Water Purifier
- Sink Cover
- Range Cover
- Galley Extension
- Double Door Refrigerator
- 6 Gal. Gas/Electric DSI Hot Water Heater
- Water Heater By-Pass (Forced Option)
- 21" Oven
- Microwave
- Create-a-Breeze™ Fan (Exchange)
- AM/FM CD/DVD Stereo
- TV Antenna with Booster and Cable Hook-Up
- Bedroom TV Hook-Up (NA 19-FS)
- Extra Roof Vent
- 13,500 BTU Ducted A/C
- 15,000 BTU Ducted A/C
- Bedspread
- Outside Grill
- Tub Surround
- Mini Blinds
- Day/Night Shades
- Wall Border
- Front Window with Rock Guard (Travel Trailers Only)
- Awning
- Electric Awning
- 2 Stabilizer Jacks
- 4 Stabilizer Jacks (Travel Trailers Only)
- Outside Shower
- Diamond Plate
- Fiberglass Front Cap (Fifth Wheels Only)
- Power Front Jacks (Fifth Wheels Only)
- 30 lb. Gas Bottles and Cover

- Spare Tire and Carrier
- AM/FM CD/DVD Home Theater Surround Sound System
- Double Bedspread (Travel Trailers Only)
- PUMA Den\*
- Swivel Rocker\*
- Bath Skylights
- Free Standing Dinette\*
- Overhead Cabinets in Slide Room\*
- Hide-A-Bed Sofa\*
- Comfort Air Bed
- Glass Shower Door\*
- Roof Ladder
- Heated Tanks
- Stacked Bunk Option (19-FS and 27-FQ Only)
- Upgraded Serta® Mattress

## PARK TRAILERS

### ADDITIONAL STANDARDS

- 6 Gal. Gas/Electric DSI Hot Water Heater
- Upgraded Serta® Mattress
- Home Theater DVD Surround Sound AM/FM/CD Player
- FS Range
- Phone Jacks
- Patio Door
- Tinted Safety Glass
- Residential Refrigerator with Ice Maker
- Solid Oak Raised Panel Cabinet Doors (Throughout)
- Lambrequin Window Treatments
- Bedroom Roof Vent
- 35,000 BTU Furnace
- 50 Amp Service
- Washer/Dryer Prep with 50 Amp Service
- Stackable Washer/Dryer Includes Prep
- Convection Microwave/Cook Top
- Create-A-Breeze™ Fan (Exchange) Fantastic Vent Fan
- 12 V. Ceiling Fan in Living Room
- 12 V. Ceiling Fan in Bedroom
- TV Antenna with Booster and Cable Hook-Up
- Bedroom TV Hook-Up
- 13,500 BTU Ducted Air Conditioning
- 15,000 BTU Ducted Air Conditioning
- King Bedspread
- Outside Grill
- Outside Shower
- 30" Entry Door IPO of Sliding Patio Door
- Tub Surround
- Bath Skylight
- Glass Shower Door
- Mini Blinds
- Day/Night Shades
- Freestanding Dinette
- Overhead Cabinets in Slide Room
- Wall Border
- Woodgrain Linoleum
- Bar Stools (2 per Floorplan)
- Swivel Rocker

### OPTIONS

- Water Purifier
- Sink Cover
- 12 Gal. Gas/Electric Water Heater
- Water Heater By-Pass
- Range Cover
- Oven
- Microwave
- 26" LCD TV
- Double Door RV Refrigerator IPO House Type

- 2 Exterior Speakers
- Hide-a-Bed
- Comfort Air Bed
- 21' Awning
- Electric Awning
- 2 Stabilizer Jacks
- 4 Stabilizer Jacks
- Roof Ladder
- Diamond Plate
- 30 Lb. Gas Bottles and Cover
- Heated Tanks
- Spare Tire and Carrier
- Folding Grab Handle
- Carbon Monoxide Detector
- Fireplace (Available Certain Models)
- Z240

## RESIDENTIAL PACKAGE

- Residential Style 18 Cu. Ft. Refer
- Patio Door
- Free-Standing Range

## ADDITIONAL STANDARDS

- Heavy Duty I-Beam Frames with EZ Lube Axles
- 1/4" x 8" Tie Down Reinforcement Plates for Secure Cargo Tie Downs
- Beaver Tail Rear Floor for Easy Loading
- 2" x 2" Wood Framed Sidewalls on 16" Centers
- 2" x 3" Floor Joist on 10" Centers
- R-7 Insulation Floor, Walls, and Ceiling for Comfort
- One Piece 5/8" Floor Decking with a 25 Year Limited Warranty
- One Piece Beauflor® Linoleum
- 3/8" Walkable Roof Decking Over 4-1/2" Crowned Roof Rafters
- One Piece Rubber Roof with 12 Year Warranty
- Insulated Duct For Air Conditioning in Ceiling
- Floor Ducted Heat
- Durable Easy-to-Clean Puma Silver Interior Wall Vinyl
- 55 Amp Converter Standard
- 7' Rear Ramp Door Height, 8' on 356-QLB
- 5.1 Dolby Surround Sound System with Sub-Woofers, AM/FM/DVD Player, Weather Band, XM Radio, and Plug-In for iPod (N/A 21-TFB and 21-TFU)
- 22" LCD Flat Screen TV with Movable Bracket for Easy Mounting Inside or Outside (N/A 21-TFU and 21-TFB)
- Front Baggage Compartment with Sliding Tray (27-SBU, 298-FQU & 356-QLB)
- Front Exterior Baggage Compartment
- Sofas Fold-Down into Queen Bed
- Tinted Safety Glass

## OPTIONS

- Water Purifier
- Sink Cover
- Range Cover
- Galley Extension
- Double Door Refrigerator
- 6 Gal. Gas/Elec. DSI Hot Water Heater
- Water Heater By-Pass
- Oven
- Microwave
- Convection Microwave/Cook Top
- Create-A-Breeze™ Fan (Exchange Fantastic Vent Fan on Travel Trailers)
- AM/FM CD/DVD Stereo (21-TFU and 21-TFB Only)
- Home Theater DVD Sound System with AM/FM CD
- 26" TV Upgrade (Available on Certain Models)
- 2 Exterior Speakers
- TV Antenna with Booster & Cable Hook-Up
- Bedroom TV Hook-Up
- Extra Roof Vent
- 13,500 BTU Ducted Air Conditioning
- 15,000 BTU Ducted Air Conditioning
- Bedspread
- Manual Track Queen Bed (Travel Trailers Only)
- Single Electric Track Queen Bed
- Double Electric Track Queen Bed
- Tub Surround
- Bath Skylight
- Glass Shower Door (356-QLB Only)
- Mini Blinds

- Day/Night Shades (Fifth Wheels Only)
- Wall Border
- Woodgrain Linoleum
- Awning
- Electric Awning
- 1 Swivel Chair (27-SBU Only)
- 2 Stabilizer Jacks
- 4 Stabilizer Jacks (Travel Trailers Only)
- Power Front Jacks (Fifth Wheels Only)
- Roof Ladder
- Outside Shower
- Outside Grill (Travel Trailers Only)
- 4.0 KW Gas Onan Generator
- 3.6 KW LP Onan Generator
- 30 Gal. Fuel Pump Station
- 30 lb. Gas Bottles & Cover
- Zip Screen
- Hide-a-Screen
- Hitch Cover (Fifth Wheels Only)
- Front Fiberglass Cap with Diamond Plate
- Diamond Plate
- Mission Alum. Modified Rim
- Heated Tanks
- Wash Down Kit
- Spare Tire & Carrier
- Folding Grab Handle
- Carbon Monoxide Detector
- Upgraded Serta® Mattress (Select Models)

## DECOR OPTIONS

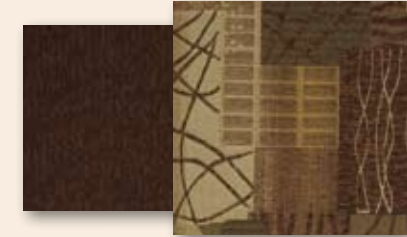
Available all Models  
Bark and Garnet available on Toy Haulers Only



Hazelnut



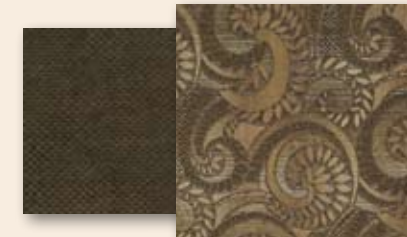
Autumn



Mahogany



Ridgewood Blue



Stone

## PUMA PREMIER PACKAGE (AVAILABLE ON MOST MODELS!)

- Folding Grab Handle
- Raised Panel Cabinet Doors (Eye Level Living Room and Kitchen)
- Overhead Cabinets in Super-Slide Models
- Bi-Fold Doors In Place of Curtains (Where Applicable)
- Day/Night Window Shades
- Upgraded Front Cap (Fifth Wheels)
- AM/FM CD/DVD Home Theater Surround Sound System
- Color Band Metal at the Top of the Coach
- Diamond Plate Standard
- High End Metal Rear Bumper Cover
- Chrome Trim Rings and Hubs on the Wheels
- Roof Ladder
- Special Puma Premier Package Decal
- Upgraded Serta® Mattress
- Outside Shower
- 2-Exterior Speakers
- 30 lb. LP Gas Bottles
- 26" LCD TV
- Sink Cover
- Range Cover
- Water Purifier
- 6 Gal. Gas & Electric Hot Water Heater
- Wall Border
- Outside Grill

\*Available on Select Models

# WELCOME THE PUMA FAMILY!

Travel Trailers | Fifth Wheels | Park Trailers | Toy Haulers



## PRE-DELIVERY INSPECTION FACILITY

20,000 square feet of quality assurance. The bare essentials for a premium product. This state of the art testing facility gives immediate daily feedback to production for quality assurance in every unit built by Puma.



Scan this barcode using a QR Reader on your smart phone to learn more about Forest River.

## PUMA DIVISION

Forest River, Inc.  
31450 M-86 West  
Colon, MI 49040  
Phone: (269) 432-3271  
[www.palominorv.com](http://www.palominorv.com)

All illustrations and specifications contained in this literature are based on the latest product information at time of publication. Forest River, Inc. reserves the right to make changes in prices, colors, materials, equipment and specifications at anytime without notice and assumes no responsibility for any error in this literature. All weights shown are approximate. All units are shipped F.O.B. point of manufacture.

CONSULT YOUR LOCAL DEALER FOR WARRANTY INFORMATION.

## PALOMINO RV ENCOURAGES YOU TO BUY LOCALLY

Palomino RV strongly encourages our retail customers to purchase from their local dealership whenever possible due to the following factors:

- Our Dealers are, as a rule, independently owned and operated businesses. Outside of those customers they personally sold products to, they are not contractually obligated to perform warranty service on Palomino products that were purchased elsewhere. There **may** be an occasion that you would be required to return to the point of purchase to satisfy warranty requirements.
- Although many dealerships will eventually service products not purchased at their place of business, they will usually take care of their customers and other Palomino customers who are traveling away from their local dealer as they would their own.
- Local purchases allow a customer to establish a relationship with a dealer close to home. This relationship provides the customer with a convenient location for service and support from a "home town" professional.
- The opportunity for a thorough PDI (Pre-Delivery Inspection) and product orientation is an additional benefit of buying from your local dealer, further providing the opportunity for refresher courses or the ability to get questions answered much more conveniently.
- For our Canadian customers, there are also requirements which must be met to bring an RV purchased out of the country to their home. Although not insurmountable, these requirements may involve such things as additional inspections and certifications, taxes and fees. Your local Canadian Dealer is a professional at meeting these requirements.

Palomino RV's goal is for all RV Owners to fully enjoy their RV experience. In light of this goal, and considering the advantages of buying local, we encourage you to be thorough when determining what product to purchase and which dealer to purchase it from as both are key to your ultimate satisfaction and the realization of your dreams.

## YOUR DEALER