

2011 PALOMINO | THOROUGHBRED



2011
THOROUGHBRED

ULTRA-LITE TRAVEL TRAILERS & FIFTH WHEELS



EXPLORE › LIVE › RELAX



THOROUGHbred TRAVEL TRAILERS

Sleek, strong, and graceful describes this Thoroughbred line of exceptional lightweight travel trailers. Their aerodynamic design, strong aluminum superstructure, and easy handling and towing characteristics make these units remarkably road worthy for families on the go. The spacious interiors are fully furnished for comfort and convenience.



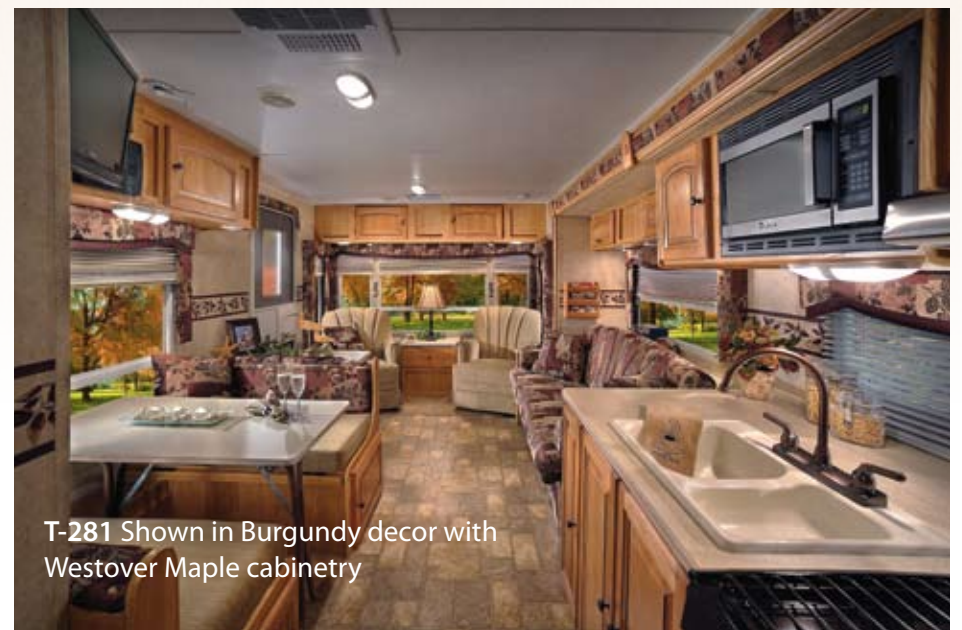
T-281 Shown in Cabernet decor with
Chocolate Pear Walnut cabinetry



T-291 Shown in Latte decor with Chocolate Pear Walnut cabinetry



T-291 Shown in Latte decor with Chocolate Pear Walnut cabinetry



T-281 Shown in Burgundy decor with Westover Maple cabinetry

TRAVEL TRAILERS STANDARDS & OPTIONS

STANDARDS

- 14" Tires
- 20,000 BTU Suburban Furnace
- 55 AMP Converter with Battery Charger
- A & E Awning
- Aluminum Framed Superstructure
- Create-A-Breeze® Fan (Mandatory Option)
- Dometic® 6 Cu. Ft. Refrigerator - Double Door
- EPDM Rubber Roof
- Fiberglass Exterior Surface
- I-Beam Frame (E-Coat)
- Outside Marine Grade Speakers

- Outside Service Lights (3)
- Outside Shower
- Oversized Bathroom Skylight
- Patio Light
- Roof Air Ready - Ducted
- Six Gallon Gas/Elec. DSI Water Heater
- Spare Tire, Bracket & Molded Cover
- Stabilizer Jacks with Sand Pads (4)
- Stove Cover
- Tinted Safety Glass Windows
- Torsion Axle, Independent Suspension
- Tub/Shower Surround
- TV Antenna/Cable/Satellite Ready

- Two - 20 lb. LP Gas Bottles with Molded Cover
- Vacuum Bonded Laminated Construction

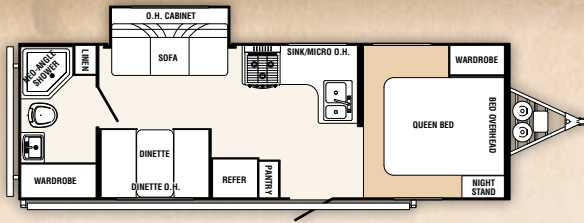
OPTIONS

- Air Conditioner (13,500 BTU)*
- Air Conditioner (15,000 BTU Upgrade)
- Aluminum Wheels
- AM/FM CD/DVD Player*
- Counter Top Extension
- Diamond Plate Front*
- M & T Raised Panel Cabinet Doors (Mandatory Option)*
- Microwave*

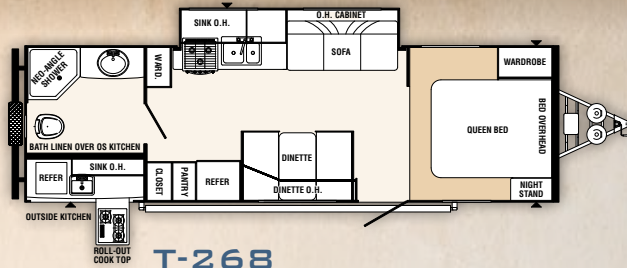
- Outside Gas Grill*
- Raised Refer Door Upgrade (6 Panel)
- Roof Ladder
- Serta® Mattress Upgrade*
- Slide Topper Awning
- Sliding A.B.S. Storage Tray
- Three-Burner Range with Oven*
- Water Purifier*

** Included in Travel Pack*

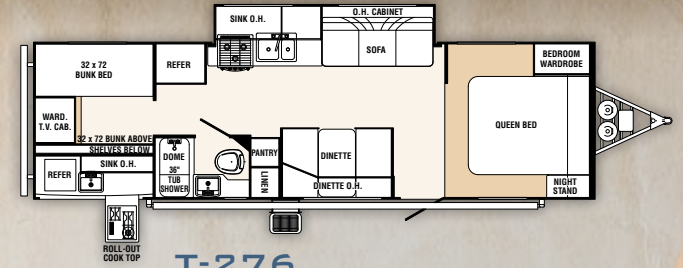
TRAVEL TRAILERS	T-245	T-26 BHSL	T-26 FBS	T-268	T-273	T-274	T-276	T-281	T-291
Hitch Dry Weight	858 lbs.	479 lbs.	617 lbs.	410 lbs.	384 lbs.	845 lbs.	835 lbs.	861 lbs.	806 lbs.
Dry Axle Weight	3747 lbs.	3817 lbs.	4040 lbs.	4612 lbs.	4868 lbs.	4365 lbs.	4639 lbs.	4375 lbs.	4381 lbs.
Total Dry Weight	4605 lbs.	4296 lbs.	4657 lbs.	5022 lbs.	5252 lbs.	5210 lbs.	5474 lbs.	5236 lbs.	5187 lbs.
GVWR	7858 lbs.	6643 lbs.	7617 lbs.	7426 lbs.	7384 lbs.	7845 lbs.	7835 lbs.	7861 lbs.	7806 lbs.
Interior Height	6' 6"	6' 6"	6' 6"	6' 6"	6' 6"	6' 6"	6' 6"	6' 6"	6' 6"
Exterior Height	9' 3"	9' 3"	9' 3"	9' 3"	9' 3"	9' 3"	9' 3"	9' 3"	9' 3"
Exterior Width	8'	8'	8'	8'	8'	8'	8'	8'	8'
Travel Length	29'	26' 9"	29' 4"	31' 2"	32' 8"	32' 8"	32' 8"	32' 8"	32'
Fresh Water Capacity	30 Gals.	30 Gals.	30 Gals.	30 Gals.	30 Gals.	30 Gals.	30 Gals.	30 Gals.	30 Gals.
Gray Water Capacity	76 Gals.	38 Gals.	38 Gals.	76 Gals.	76 Gals.	30 Gals.	30 Gals.	38 Gals.	38 Gals.
Black Water Capacity	38 Gals.	30 Gals.	30 Gals.	30 Gals.	30 Gals.	30 Gals.	30 Gals.	38 Gals.	30 Gals.



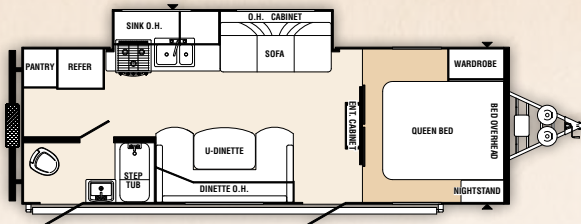
T-245



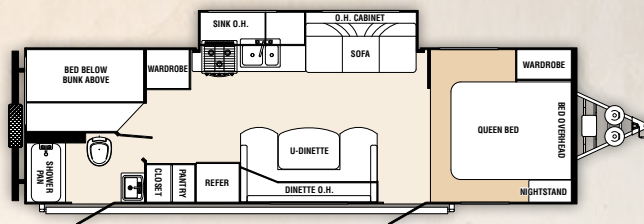
T-268



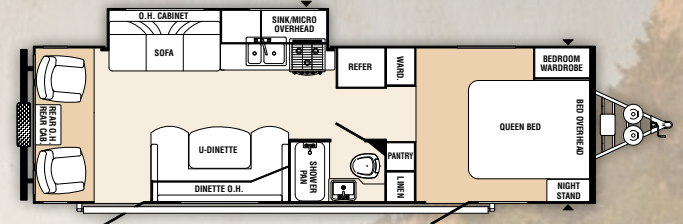
T-276



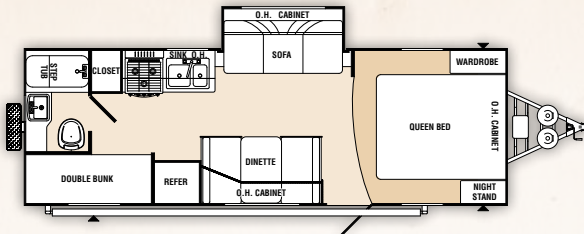
T-26 FBS



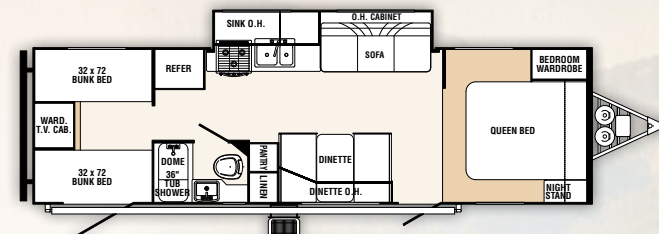
T-273



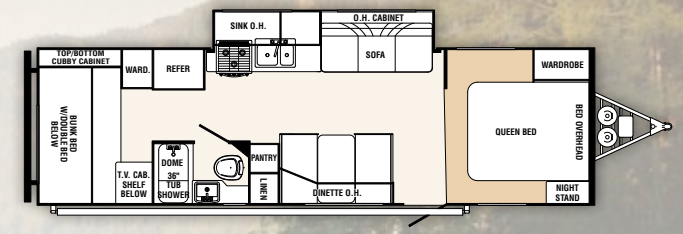
T-281



T-26 BHSL



T-274



T-291

EXCELLENCE
YOU DESERVE



THOROUGHBRED ELITE & V-SERIES

The Thoroughbred Elite and V-Series are the results of outstanding design innovation. The Elite takes RV living to the next level with wonderfully appointed interiors and residential styling that's both classic and extraordinary. Efficiently engineered, the V-Series utilizes the hitch area to create more living area and storage space. Its V-styling also provides better aerodynamics for more fuel-efficient towing and easier handling.





ELITE – T-829 RLOS Shown in Heather decor with combination cabinets (Harmony/Walnut)



V-SERIES – T-829 VRL Shown in Cabernet decor with Chocolate Pear Walnut cabinetry



V-SERIES – T-829 VRL Shown in Burgundy decor with Westover Maple cabinetry

ELITE & V-SERIES STANDARDS & OPTIONS

STANDARDS

- 15" Tires
- 30,000 BTU Suburban Furnace
- 55 AMP Converter with Battery Charger
- Aluminum Framed Superstructure
- Bathroom Skylight
- China Toilet
- Dometic® 6 Cu. Ft. Refrigerator-Double Door
- EPDM Rubber Roof
- Fiberglass Exterior Surface
- Folding Entry Assist Handle
- Free Standing Table with Chairs (Opt. on T-829 QBS, T-829 QBS-K, T-831 BHS — N/A on T-829 FLS)
- Heated Holding Tanks
- Hide-A-Bed Sofa (Opt. on T-829 QBS, T-829 QBS-K)

- I-Beam Frame
- M & T Raised Panel Cabinet Doors
- Night Shades
- Outside Marine Grade Speakers
- Outside Service Lights (3)
- Outside Shower
- Patio Light and (2) Scare Lights
- Six Gallon Gas/Elec. DSI Water Heater
- Solarium Windows (Opt. on T-831 BHS, T-829 QBS, T-829 QBS-K)
- Spare Tire, Bracket & Molded Cover
- Stove Cover
- Tinted Safety Glass Windows
- Torsion Axle, Independent Suspension
- Tub Surround - One Piece Tile Look
- TV Antenna/Cable/Satellite Ready

- Two - 30 lb. LP Gas Bottles with Molded Cover
- Vacuum Bonded Laminated Construction

OPTIONS

- A & E Electric Awning (Mandatory Option)
- Air Conditioner (13,500 BTU)*
- Air Conditioner (15,000 BTU Upgrade)
- Aluminum Wheels*
- CD/DVD/MP3 Player with 5.1 Dolby® Surround Sound
- C-Eater Sofa (U-Shaped Dinette) (Std. on T-829 FLS)
- Counter Top Extension
- Create-A-Breeze™ Fan (Mandatory Option)
- Electric Awning*

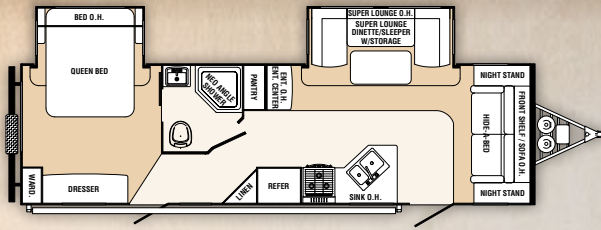
- La-Z-Boy® Recliners (Opt. on T-829 VRL, T-829 VFKS, T-829 RLQS)
- Microwave*
- Outside Gas Grill*
- Raised Refer Door Upgrade (6 Panel)*
- Roof Ladder
- Serta® Mattress Upgrade*
- Slide Topper Awning
- Three-Burner Range with Oven*
- Water Purifier*

* Included in Travel Pack

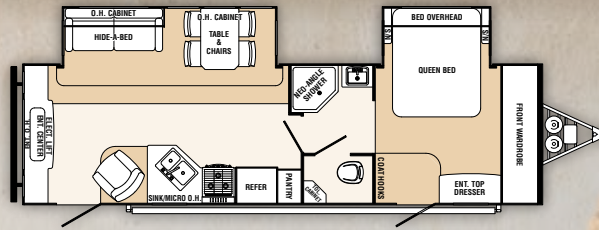
SPECIFICATIONS	ELITE					V-SERIES		
	T-829 FLS	T-829 QBS	T-829 QBS-K	T-829 RLQS	T-831 BHS	T-827 VRB	T-829 VRL	T-829 VFKS
Hitch Dry Weight	994 lbs.	627 lbs.	689 lbs.	782 lbs.	712 lbs.	955 lbs.	1090 lbs.	1317 lbs.
Dry Axle Weight	5477 lbs.	5644 lbs.	5979 lbs.	5528 lbs.	5983 lbs.	4731 lbs.	5716 lbs.	4873 lbs.
Total Dry Weight	6471 lbs.	6271 lbs.	6668 lbs.	6310 lbs.	6695 lbs.	5686 lbs.	6806 lbs.	6190 lbs.
GVWR	7994 lbs.	7627 lbs.	7689 lbs.	7782 lbs.	8712 lbs.	7955 lbs.	9090 lbs.	9317 lbs.
Interior Height	6' 5"	6' 5"	6' 5"	6' 6"	6' 5"	6' 6"	6' 6"	6' 6"
Exterior Height	9' 9"	9' 9"	9' 9"	9' 9"	9' 9"	9' 9"	9' 9"	9' 9"
Exterior Width	8'	8'	8'	8'	8'	8'	8'	8'
Travel Length	33' 6"	33' 5"	33' 5"	32' 5"	35' 1"	29' 6"	33' 1"	33'
Fresh Water Capacity	30 Gals.	30 Gals.	30 Gals.	30 Gals.	30 Gals.	30 Gals.	30 Gals.	30 Gals.
Gray Water Capacity	30 Gals.	76 Gals.	114 Gals.	76 Gals.	68 Gals.	60 Gals.	68 Gals.	76 Gals.
Black Water Capacity	30 Gals.	38 Gals.	38 Gals.	38 Gals.	38 Gals.	30 Gals.	30 Gals.	38 Gals.

ELITE FLOORPLANS

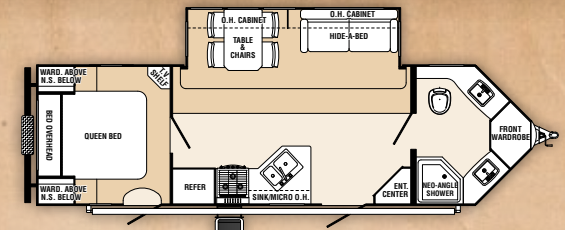
V-SERIES FLOORPLANS



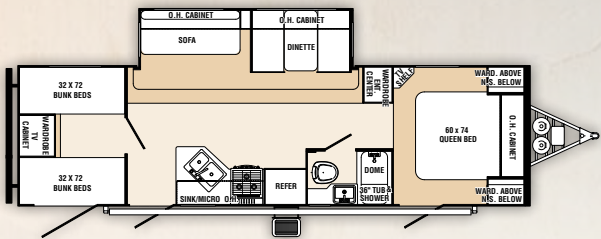
T-829 FLS



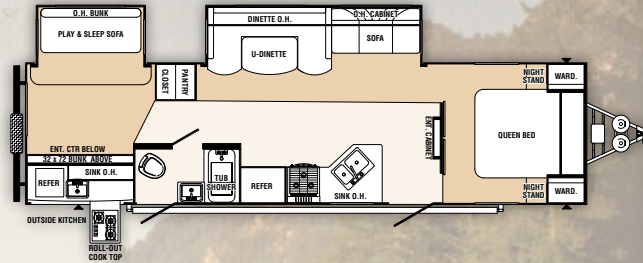
T-829 RLQS



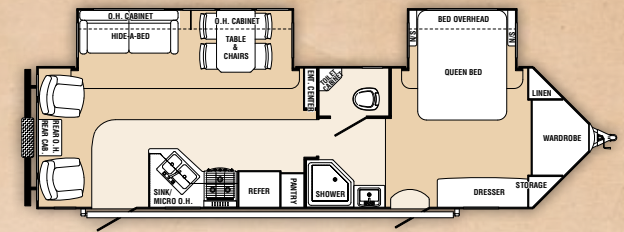
T-827 VRB



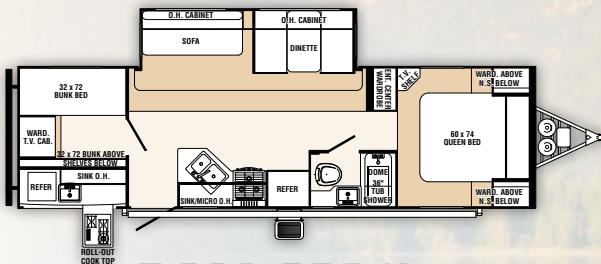
T-829 QBS



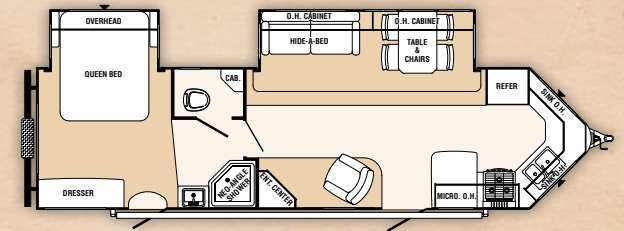
T-831 BHS



T-829 VRL



T-829 QBS-K



T-829 VFKS



THOROUGHbred FIFTH WHEELS

With an aluminum frame superstructure, Thoroughbred fifth wheels are both lightweight and exceptionally strong. This concept of more strength with less weight makes these units the perfect traveling companion. Inside you'll find lovely living quarters appointed with fine furnishings and great features. All this adds up to exceptional quality and outstanding value that will deliver years of fun and memories.





F-829 RKS shown in Cabernet decor with combination cabinets (Harmony/Walnut)



F-829 RKS shown in Cabernet decor with combination cabinets (Harmony/Walnut)



F-826 RL shown in Burgundy decor with Westover Maple cabinetry

COMFORT
WITH CLASS



FIFTH WHEEL STANDARDS & OPTIONS

STANDARDS

- 15" Tires
- 30,000 BTU Suburban Furnace
- 55 AMP Converter with Battery Charger
- Aluminum Framed Superstructure
- Bathroom Skylight
- China Toilet
- Dometic® 6 Cu. Ft. Refrigerator-Double Door
- EPDM Rubber Roof
- Fiberglass Exterior Surface
- Folding Entry Assist Handle
- Free Standing Table with Chairs (N/A on F826 RL — Opt. on F-829 BHSB)
- Heated Holding Tanks

- Hide-A-Bed Sofa (N/A on F826 RL — Opt. on F-829 BHSB)
- I - Beam Frame
- Neo-Angle Shower
- Night Shades
- Outside Marine Grade Speakers
- Outside Service Lights (3)
- Outside Shower
- Patio Light and (2) Scare Lights
- Six Gallon Gas/Elec. DSI Water Heater
- Solarium Windows (N/A on F826 RL — Opt. on F-829 BHSB)
- Spare Tire, Bracket & Molded Cover
- Stove Cover
- Tinted Safety Glass Windows
- Torsion Axle, Independent Suspension
- Tub Surround - One Piece
- TV Antenna/Cable/Satellite Ready
- Two - 30 lb. LP Gas Bottles with Molded Cover
- Vacuum Bonded Laminated Construction

OPTIONS

- A & E Electric Awning*
- Air Conditioner (13,500 BTU)*
- Air Conditioner (15,000 BTU Upgrade)
- Aluminum Wheels*
- CD/DVD/MP3 Player with 5.1 Dolby® Surround Sound*
- C-Eater (U-Shaped Dinette)

- Counter Top Extension
- Create-A-Breeze™ Fan (Mandatory Option)
- Electric Awning*
- La-Z-Boy® Recliners (N/A on F-829 BHSB)
- Microwave*
- Outside Gas Grill*
- Raised Refer Door Upgrade (6 Panel)*
- Roof Ladder
- Serta® Mattress Upgrade*
- Slide Topper Awning
- Three-Burner Range with Oven*
- Water Purifier*

** Included in Travel Pack*

ALL TRAVEL TRAILER AND FIFTH WHEEL DECOR OPTIONS



Cabernet Decor with Leather



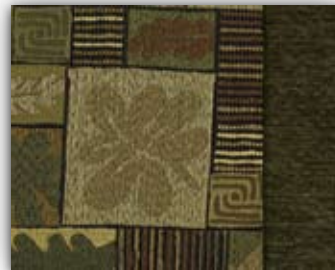
Heather Decor with Leather



Latte Decor



Mahogany Decor



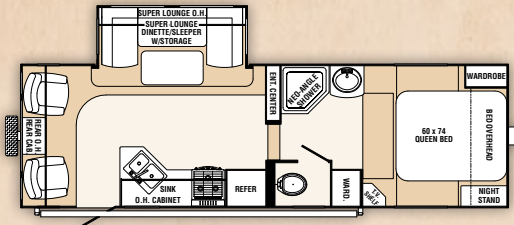
Moss Decor

CABINETY OPTIONS

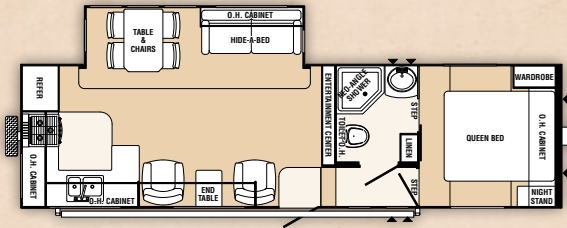


Walnut – Maple – Harmony

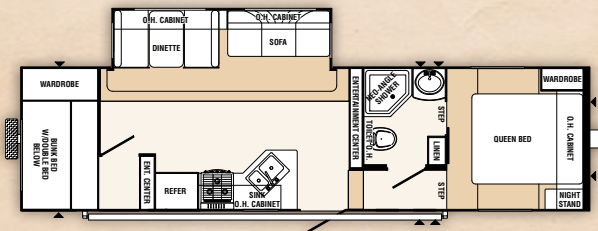
FLOORPLANS



F-826 RL



F-829 RKS B



F-829 BHS B

SPECIFICATIONS

FIFTH WHEELS	F-826 RL	F-829 BHSB	F-829 RKS B
Hitch Dry Weight	1452 lbs.	1644 lbs.	1219 lbs.
Dry Axle Weight	5177 lbs.	5609 lbs.	5735 lbs.
Total Dry Weight	6629 lbs.	7253 lbs.	6954 lbs.
Carrying Capacity	1823 lbs.	1391 lbs.	1265 lbs.
GVWR	8452 lbs.	8644 lbs.	8219 lbs.
Interior Height	6' 6"	6' 6"	6' 6"
Exterior Height	11' 10"	11' 10"	11' 10"
Exterior Width	8'	8'	8'
Travel Length	28'	32' 6"	30' 4"
Fresh Water Capacity	30 Gals.	30 Gals.	30 Gals.
Gray Water Capacity	30 Gals.	60 Gals.	60 Gals.
Black Water Capacity	30 Gals.	30 Gals.	30 Gals.



2011 | PALOMINO THOROUGHBRED | FEATURES & OPTIONS





14



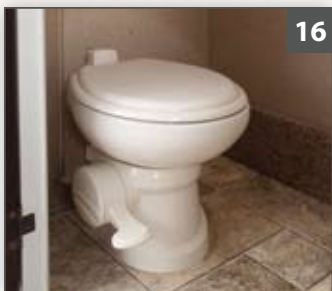
19



15



17



16



18



20

1. Folding Entry Assist Handle with Fold-Down Double Steps
2. Optional Outside Gas Grill
3. Standard Outside Shower
4. Optional Aluminum Wheels
5. Optional 10 Bladed, 3 Speed Create-A-Breeze™ Fantastic Vent
6. Outdoor TV Mount
7. LP Quick Connect
8. Crowned Roof
9. Radius Front Cap with Optional Diamond Plate
10. Optional Electric Awning
11. 30 Amp. Detachable Cord
12. Pass-Thru Storage.
13. Drawer Extension Guides and Cabinet/Wardrobe
14. Living Room Hide-A-Bed Sofa and Overhead Cabinets with Locking Door Fronts
15. Dreamscape Serta® Pillow-Top Quilted Mattress
16. China Toilet with Foot Flush
17. Under Bed Storage with Outdoor Access
18. Whole System Water Filtration
19. Retractable Flat Screen TV
20. AM/FM CD/DVD Player and Control Center



PALOMINO RV ENCOURAGES YOU TO BUY LOCALLY

Palomino RV strongly encourages our retail customers to purchase from their local dealership whenever possible due to the following factors:

- Our Dealers are, as a rule, independently owned and operated businesses. Outside of those customers they personally sold products to, they are not contractually obligated to perform warranty service on Palomino products that were purchased elsewhere. There may be an occasion that you would be required to return to the point of purchase to satisfy warranty requirements.
- Although many dealerships will eventually service products not purchased at their place of business, they will usually take care of their customers and other Palomino customers who are traveling away from their local dealer as they would their own.
- Local purchases allow a customer to establish a relationship with a dealer close to home. This relationship provides the customer with a convenient location for service and support from a "home town" professional.
- The opportunity for a thorough PDI (Pre-Delivery Inspection) and product orientation is an additional benefit of buying from your local dealer, further providing the opportunity for refresher courses or the ability to get questions answered much more conveniently.
- For our Canadian customers, there are also requirements which must be met to bring an RV purchased out of the country to their home. Although

not insurmountable, these requirements may involve such things as additional inspections and certifications, taxes and fees. Your local Canadian Dealer is a professional at meeting these requirements.

Palomino RV's goal is for all RV Owners to fully enjoy their RV experience. In light of this goal, and considering the advantages of buying local, we encourage you to be thorough when determining what product to purchase and which dealer to purchase it from as both are key to your ultimate satisfaction and the realization of your dreams.

PRE-DELIVERY INSPECTION FACILITY

20,000 square feet of quality assurance.
The bare essentials for a premium product.



THOROUGHBRED TRAVEL TRAILERS



THOROUGHBRED ELITE



THOROUGHBRED FIFTH WHEELS



**FREE EMERGENCY ROADSIDE
ASSISTANCE SERVICE
ADMINISTERED BY COACH-NET®.
ASK YOUR DEALER FOR MORE
INFORMATION.**

Palomino RV

1047 East M-86 • Colon, MI 49040
Phone: (269) 432-3271 • Fax: (269) 432-2516
www.palominorv.com



All illustrations and specifications contained in this literature are based on the latest product information at time of publication. Palomino RV reserves the right to make changes in prices, colors, materials, equipment and specifications and to discontinue models at anytime without notice or obligation and assumes no responsibility for any error in this literature.

Palomino Travel Trailers and Fifth Wheels are designed to meet the varied needs of the customer. It is the responsibility of the owner to select the proper load combination for their individual needs without exceeding the listed axle weight capacities.

Dealer