



# Spree ESCAPE



## Introducing the *All New Spree Escape*

The name says it all... the all new Spree Escape is ready to go when you are, even if it's a last minute decision. The Escape is lightweight, nicely equipped with a bright interior décor, and is built with KZ quality.



## E14RB

The Escape floorplans use all of the available space for amenities and storage with plenty of room to relax. *"Spree Escape... Camping Made Easy."*



Amaretto Décor



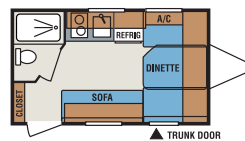
Earth Décor



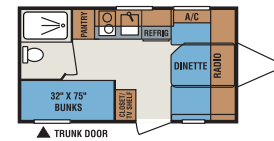
Wheat Décor

SPECIFICATIONS	E14RB	E16BH	E16RBT	E19BH	E19SB	E19SBT
*UVW (Unloaded Veh. Wt.)	2,200	2,360	TBD	TBD	TBD	TBD
*Dry Hitch Weight	260	320	TBD	TBD	TBD	TBD
*Dry Axle Weight	1,940	2,040	TBD	TBD	TBD	TBD
NCC (Net Carrying Cap.)	500	340	TBD	TBD	TBD	TBD
GVWR	2,700	2,700	TBD	TBD	TBD	TBD
Interior Height	75"	75"	75"	75"	75"	75"
Exterior Height w/out AC	99"	99"	99"	100"	100"	100"
Exterior Width	84"	84"	84"	84"	84"	84"
Exterior Length	16'	17' 4"	17' 4"	20' 9"	20' 9"	20' 9"
Refrigerator (cu. feet)	3	3	3	4	4	4
Wtr. Htr. Cap. (gal. G/E w/DSI)	6	6	6	6	6	6
Fresh Water Cap. (gal.)	10	10	10	20	20	20
Waste Water Cap. (gal.)	9	9	9	9	15	15
Gray Water Cap. (gal.)	15	15	15	15	15	15
LP Gas Cap. (lbs.)	20	20	20	20	20	20
Furnace BTUs (1,000's) <i>Opt.</i>	16	16	16	16	16	16
Tire Size	14"	14"	14"	14"	14"	14"
Awning	10'	10'	10'	10'	10'	10'

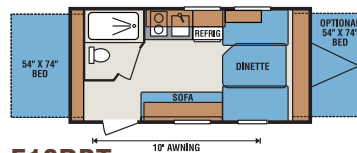
\*This weight reflects the average unit weight for a 5 month period for each model. Your trailer weight will vary according to optional equipment.



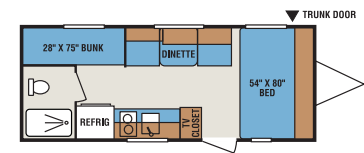
E14RB



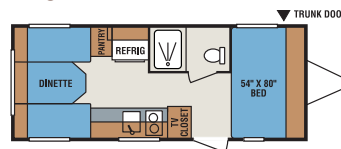
E16BH



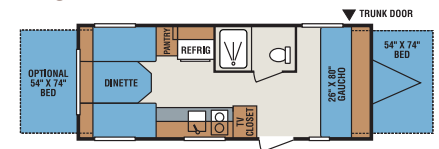
E16RBT



E19BH



E19SB



E19SBT

Dealer:

**ASK ABOUT OUR  
1-YEAR WARRANTY!**

For more product details and in-depth information, visit us on the web at [www.kz-rv.com](http://www.kz-rv.com)