

*Daybreak*

**DAYBREAK** Class A Gas **SPECIFICATIONS**





# Daybreak

## REDEFINING WHAT A MOTORHOME CAN BE *Class A Gas*

If better quality and styling for less is what you have been longing for, Daybreak is the answer. A Class-A motorhome with every feature and benefit you have ever dreamed of at a price that won't cause nightmares.



**LUXURY CHERRY**



**VINTAGE MAPLE**

| MODEL                               | 27PD     | 3211     | 3370     | 34SS     | 35BD     | 36SD     |
|-------------------------------------|----------|----------|----------|----------|----------|----------|
| Chassis                             | Ford     | Ford     | Ford     | Ford     | Ford     | Ford     |
| Gross Vehicle (GVWR)                | 18000    | 18000    | 22000    | 22000    | 22000    | 22000    |
| Gross Combined (GCWR)               | 26000    | 26000    | 26000    | 26000    | 26000    | 26000    |
| Wheel Base                          | 190      | 208      | 216.5    | 216.5    | 228      | 228      |
| Exterior Length (w/o ladder)        | 28' 11"  | 31' 11"  | 33' 7"   | 34' 7"   | 35' 6"   | 36' 5"   |
| Exterior Height (w/ AC)             | 12'      | 12'      | 12'      | 12'      | 12'      | 12'      |
| Exterior Width (w/o mirrors)        | 101"     | 101"     | 101"     | 101"     | 101"     | 101"     |
| Interior Height                     | 78"      | 78"      | 78"      | 78"      | 78"      | 78"      |
| Awning Size                         | 16'      | 16'      | 16'      | 16'      | 13'      | 16'      |
| Fuel (gal)                          | 80       | 80       | 80       | 80       | 80       | 80       |
| LPG (lbs)                           | 81       | 81       | 81       | 81       | 81       | 81       |
| Fresh/Waste/Grey Water (gal)        | 65/47/47 | 65/47/47 | 65/39/47 | 65/47/47 | 65/39/47 | 65/47/47 |
| Water Heater (gal)                  | 6        | 6        | 6        | 6        | 6        | 6        |
| Furnace (BTUs)                      | 30,000   | 30,000   | 30,000   | 30,000   | 30,000   | 30,000   |
| Exterior Storage Capacity (cu. ft.) | 98.86    | 150      | 131      | 163      | 131      | 200      |



**BEACH COMBER**



**GOLD MEDALLION**



**DESERT CLAY**



**STANDARD GRAPHICS**



**PARTIAL PAINT PACKAGE**

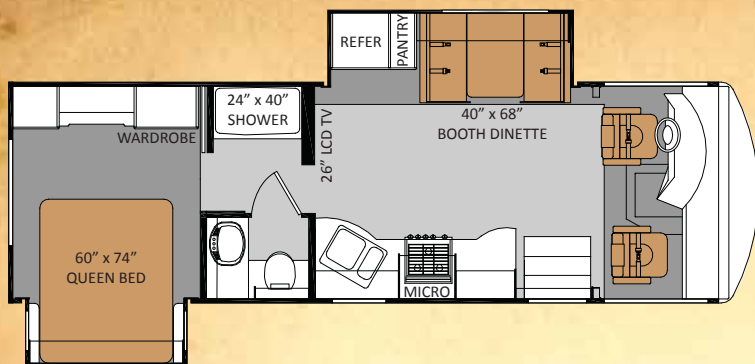


**GRANITE**

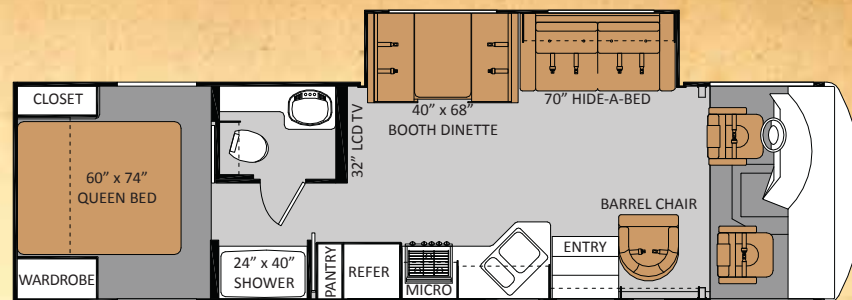


**ROYAL RED**

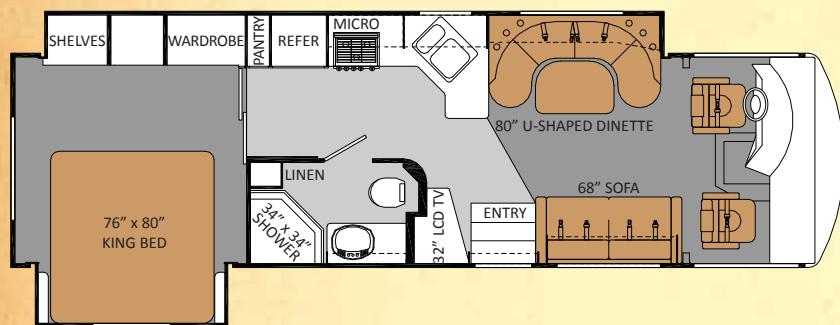




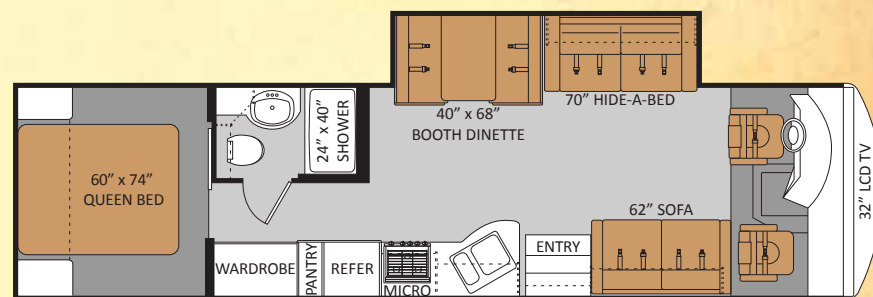
**27PD**



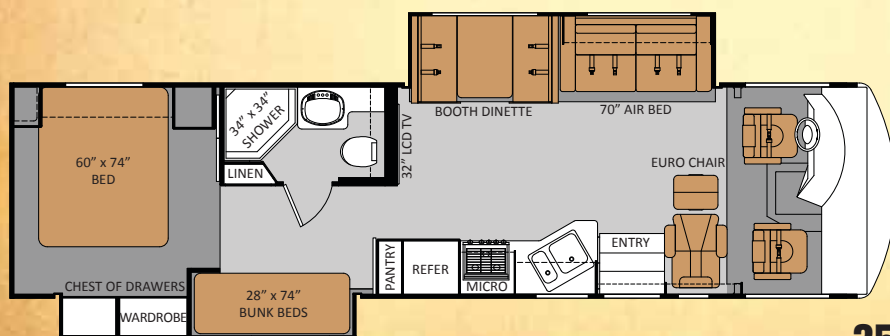
**3211**



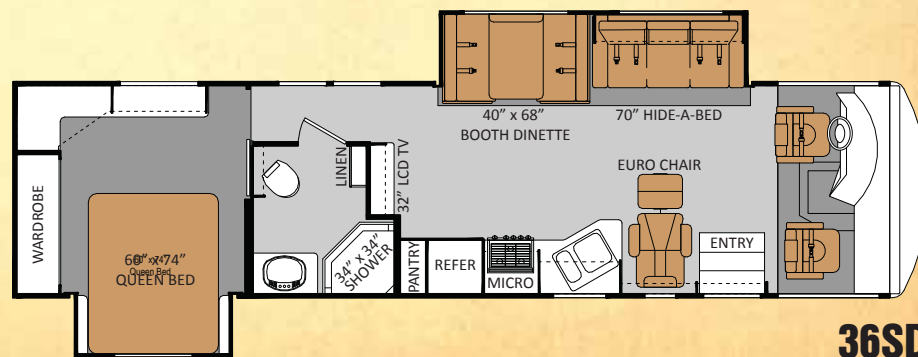
**3370**



**34SS**



**35BD**



**36SD**

**IMPORTANT - PLEASE READ:** Information published within this brochure reflects product design, fabrication, material, components and specifications at the date of printing. If your vehicle was manufactured before this brochure was published this information may not be accurate because vehicles assembled before the brochure was published may not have the same design, fabrication, materials, components and specification as represented in the brochure. If your vehicle was manufactured after this sales brochure was published the representations may not be accurate because, for product improvement reasons, we reserve the unilateral right, at any time, without prior notice, to make changes in product design, material, components and specifications. The date the brochure was published (i.e. "Julian date") is set forth on the last page of the brochure. IF CERTAIN INFORMATION PUBLISHED WITHIN THIS BROCHURE IS SIGNIFICANT TO YOUR PURCHASING DECISION, PLEASE CONSULT WITH YOUR SELLING DEALERSHIP TO CONFIRM THAT THE INFORMATION IS ACCURATE WITH RESPECT TO THE VEHICLE YOU ARE CONSIDERING PURCHASING. Photographs in the brochure may depict optional equipment or may only be available in certain floor plans. We reserve the right to make changes in prices and models and to discontinue models without notice or obligation. Components, appliances and the chassis may have been manufactured in a calendar year before the vehicle's designated model year. All capacities are approximate. The actual length of the vehicle may differ from that indicated in the brochure due to variances in the manufacturing processes and/or installed components. All dry weights are based on standard model features and do not include optional features or equipment. Components, appliances and features may differ to conform to local codes. Due to EPA environmental restrictions, engine power and torque ratings may change during any model year. The Thor Motor Coach logo and its design are registered trademarks. Other products and company names are trademarks and/or registered trademarks of their respective manufacturer. While the color of the motorhome's exterior and the interior fabrics depicted in this brochure are fair and reasonable depictions, the colors depicted may not be exact match of the actual colors because of variances in photo processing and printing. Component part and appliance manufacturers issue limited warranties covering portions of the vehicle not covered under the limited warranty we issue. To learn specific details regarding warranty coverage please consult your selling dealership or review the warranty packet inside the vehicle.

## STANDARD FEATURES AND OPTIONS

### CONSTRUCTION & EXTERIOR

- Fiberglass front & rear caps
- Side-mounted power patio awning
- White fiberglass exterior with deluxe graphics
- Radius corner domed TPO roof
- Locking exterior storage doors
- Black framed, radius corner windows
- Easy-to-clean rotocast storage compartments
- Lighted storage compartments
- Full basement pass-through storage
- Pre-wire entertainment hookup in storage area

### CONSTRUCTION & EXTERIOR OPTIONS

- Partial paint package
- Black framed dual-pane windows
- Upgraded Gelcoat Walls
- Full body paint with gelcoat walls

### AUTOMOTIVE & COCKPIT

- Ford Chassis - 6.8L Triton V-10 Engine with 5 Speed TorqShift Automatic Transmission with Overdrive
- Stainless steel wheel liners
- Trailer hitch (5,000 tow / 500 tongue lbs.)
- AM/FM/CD in-dash radio
- Tinted wrap around one piece windshield
- Emergency-start circuit
- Map light and Drink Holders
- Side mount mirrors
- Soft touch leather captain's chairs
- 3-point, wall-mounted seat belts
- Sun visors

### AUTOMOTIVE & COCKPIT OPTIONS

- Back-up monitor system includes touch screen AM/FM/CD/AUX/iPod/MP3/USB in-dash radio & weather band
- Side Cameras (requires back-up monitor system option)
- iPod docking station
- Automatic leveling jacks w/touch pad controls
- **Convenience Package:** Heated & remote power mirrors, slide-room awnings, rear ladder and dash fans

### INTERIOR

- Air conditioner: 13,500-BTU ducted central (front) (N/A 27PD)
- Air conditioner: 15,000-BTU ducted central (front) (27PD only)
- Soft Touch Leather Sofa (34SS only)
- Soft Touch Leather Hide-a-Bed Sofa (N/A 27PD & 3370)
- Driver Side Soft Touch Leather U-Dinette w/Passenger Side Sofa (3370 only)
- Night shades (except kitchen & at bunk beds)
- Linoleum through out living room, bathroom, entry and kitchen
- Double electric exterior entrance step
- Easy access battery compartment in stairwell

### INTERIOR OPTIONS

- Air conditioner: 13,500-BTU ducted central (rear)
- Driver Side Soft Touch Leather Sofa w/ Passenger Side Booth Dinette (3370 only)

### GALLEY

- Refrigerator: flush-mount, double-door
- 3-burner range & oven
- Microwave oven (N/A 3370)
- Microwave/Convection Oven w/ Cooktop (replaces oven) (3370 only)
- Solid-wood raised panel cabinet doors upper & lower
- Booth dinette
- Ball bearing drawer guides

### GALLEY OPTIONS

- Refrigerator: Large flush-mount, double-door

### ENTERTAINMENT

- Toshiba 32" high definition LCD TV with full-function remote (N/A 27PD)
- Toshiba 26" high definition LCD TV With full function remote (27PD only)
- Sensor TV antenna w/ signal Booster
- Cable TV/satellite hookup inside storage area

- Pre-wired for roof-mounted satellite dish

### ENTERTAINMENT OPTIONS

- **Media Package:** DVD player in the living area and 19" High Definition LCD in bedroom

### BEDROOM & BATHROOM

- Queen size bed and mattress
- Designer Bedspread & shams with toss pillow
- Bunk beds (35BD only)
- Night shades
- Shower with glass door
- Skylight in shower
- Power vent
- Foot flush porcelain toilet with sprayer

### BEDROOM & BATHROOM OPTIONS

- Flexible Bunk bed/dinette (35BD only)
- Extra wardrobe (replaces bunk beds) (35BD only)

### SAFETY & CONVENIENCE

- Systems Control Panel
- Smoke, LPG, carbon monoxide detectors
- Fire extinguisher

### ELECTRICAL & PLUMBING

- 30,000 BTU electronic ignition furnace
- 6-gallon gas water heater with electronic ignition
- Water heater bypass kit
- 30 amp/120 volt service
- Generac Impact 5.0KW generator (30 amp service)
- Deep cycle 12 volt battery
- Battery disconnect
- Enclosed heated potable & holding tanks

### ELECTRICAL & PLUMBING OPTIONS

- **Independence Package:** Onan 5.5 kW Marquis Gold Generator Dual 6-volt auxiliary batteries, and 50-amp service

YOUR LOCAL TMC DEALER:



Go RVing.

P.O. BOX 1486 • ELKHART, IN 46515 • CUSTOMER SERVICE: 800-860-3812 • SALES DEPARTMENT: 800-860-5658 • **DAYBREAKRV.COM**

