

Challenger

CHALLENGER *Class A Gas* **SPECIFICATIONS**



Challenger FEATURES & FLOORPLANS THAT RAISE THE BAR *Class A Diesel*

A powerful Class A motorhome for the serious vacationer. More luxuries, conveniences and quality features are yours when you choose Thor Motor Coach's top-of-the-line gas motorhome. Challenger surpasses the plush fabrics, brand name components, exquisite designs and solid structures found on coaches costing much more. Look further into Challenger's comfort and innovation and you'll be surprised at how much value you'll really find.



LUXURY CHERRY



VINTAGE MAPLE

MODEL	32VS	35SD	36FD	37KT	37BD
Chassis	Ford	Ford	Ford	Ford	Ford
Gross Vehicle (GVWR)	22,000	22,000	22,000	22,000	22,000
Gross Combined (GCWR)	26,000	26,000	26,000	26,000	26,000
Wheel Base	208	228	242	242	242
Exterior Length (without ladder)	33'8"	36'5"	36'8"	37'10"	37'10"
Exterior Height (with air conditioning)	12'7"	12'7"	12'7"	12'7"	12'7"
Exterior Width (without mirrors)	101"	101"	101"	101"	101"
Interior Height	82"	82"	82"	82"	82"
Awning Size	16'	16'	16'	13'	16'
Fuel (gallons)	80	80	80	80	80
LPG (pounds)	104	104	104	104	104
Fresh/Waste/Grey Water (gallons)	65/43/43	65/43/43	65/43/43	65/43/43	65/43/43
Water Heater (gallons)	6	6	6	6	6
Furnace (BTUs)	34,000	34,000	34,000	34,000	34,000
Exterior Storage Capacity (cubic feet)	135	200	215	225	225



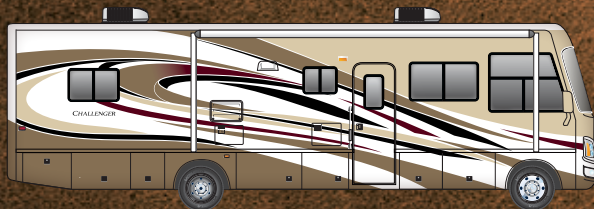
IVORY COAST



SIERRA CANYON



ESPRESSO



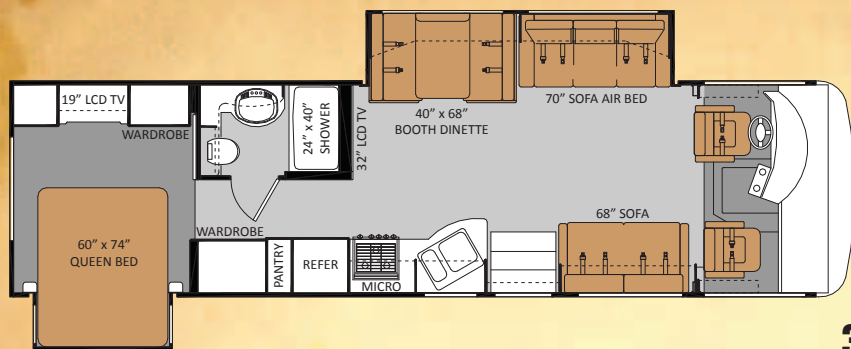
PARTIAL PAINT



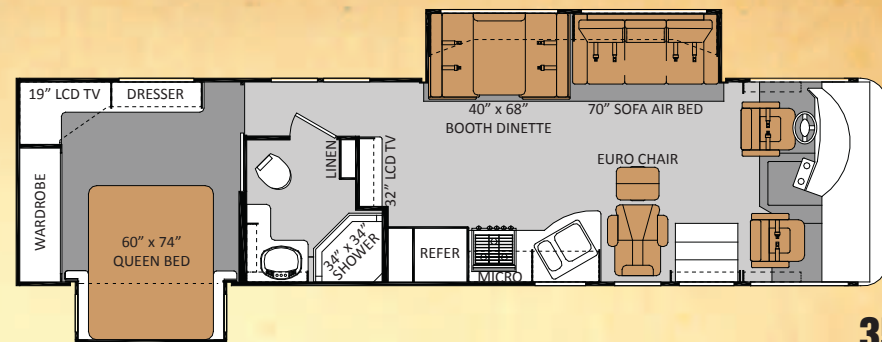
CAPPUCCINO



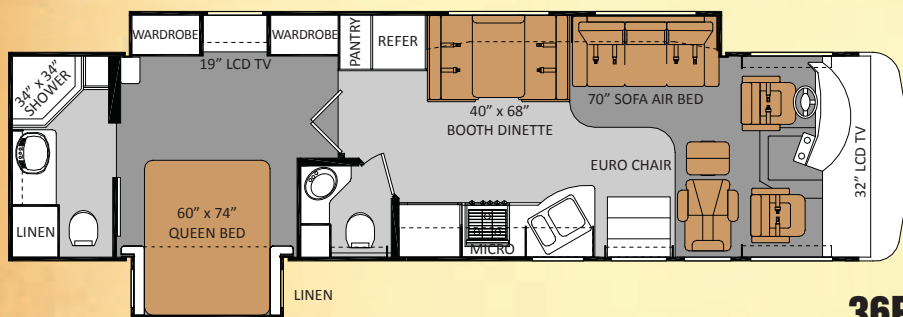
CHILI PEPPER



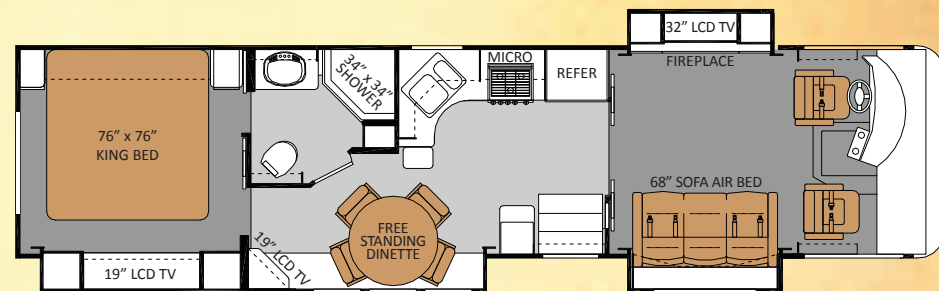
32VS



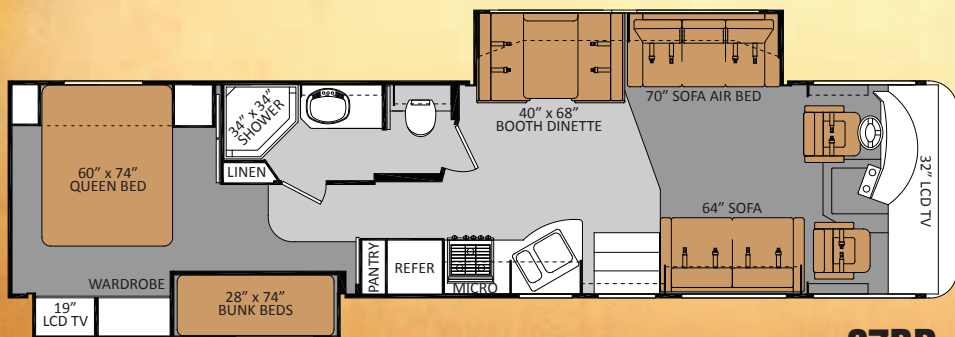
35SD



36FD



37KT



37BD

IMPORTANT - PLEASE READ: Information published within this brochure reflects product design, fabrication, material, components and specifications at the date of printing. If your vehicle was manufactured before this brochure was published this information may not be accurate because vehicles assembled before the brochure was published may not have the same design, fabrication, materials, components and specification as represented in the brochure. If your vehicle was manufactured after this sales brochure was published the representations may not be accurate because, for product improvement reasons, we reserve the unilateral right, at any time, without prior notice, to make changes in product design, material, components and specifications. The date the brochure was published (i.e. "Julian date") is set forth on the last page of the brochure. IF CERTAIN INFORMATION PUBLISHED WITHIN THIS BROCHURE IS SIGNIFICANT TO YOUR PURCHASING DECISION, PLEASE CONSULT WITH YOUR SELLING DEALERSHIP TO CONFIRM THAT THE INFORMATION IS ACCURATE WITH RESPECT TO THE VEHICLE YOU ARE CONSIDERING PURCHASING. Photographs in the brochure may depict optional equipment or may only be available in certain floor plans. We reserve the right to make changes in prices and models and to discontinue models without notice or obligation. Components, appliances and the chassis may have been manufactured in a calendar year before the vehicle's designated model year. All capacities are approximate. The actual length of the vehicle may differ from that indicated in the brochure due to variances in the manufacturing processes and/or installed components. All dry weights are based on standard model features and do not include optional features or equipment. Components, appliances and features may differ to conform to local codes. Due to EPA environmental restrictions, engine power and torque ratings may change during any model year. The Thor Motor Coach logo and its design are registered trademarks. Other products and company names are trademarks and/or registered trademarks of their respective manufacturer. While the color of the motorhome's exterior and the interior fabrics depicted in this brochure are fair and reasonable depictions, the colors depicted may not be exact match of the actual colors because of variances in photo processing and printing. Component part and appliance manufacturers issue limited warranties covering portions of the vehicle not covered under the limited warranty we issue. To learn specific details regarding warranty coverage please consult your selling dealership or review the warranty packet inside the vehicle.

STANDARD FEATURES AND OPTIONS

CONSTRUCTION & EXTERIOR

- Radius Corner Domed TPO Roof
- Fiberglass Front & Rear Caps
- Black Framed Radius Corner Slider Windows
- Gelcoat sidewalls with partial paint package
- Power Patio Awning
- Slide Out Topper Awnings
- Fog Lights
- Double Electric Exterior Entrance Step
- Battery Access in Stairwell
- Full Basement Pass-Through Storage
- Lighted Rotocast Storage Compartments
- Locking Exterior Storage Doors with Gas Strut Supports
- Side Hinged Aluminum Baggage Doors
- EZ FLOW Termination Area with Whole Coach Water Filtration System
- Rear Ladder
- Exterior Shower

CONSTRUCTION & EXTERIOR OPTIONS

- Full Body Paint
- Black Framed Dual Pane Windows

AUTOMOTIVE & COCKPIT

- Ford Chassis - 6.8L Triton V-10 Engine with 5 Speed TorqShift Automatic Transmission with Overdrive
- 22.5" Tires with Brite Aluminum Wheels
- 5,000 lb Trailer Hitch (500 lb Tongue)
- Emergency Start Circuit
- Automatic leveling jacks w/touch pad controls
- Sun Visors
- "Comfort Fit" by Villa Soft Touch Leather captain's chairs
- Driver's Arm Rest with Map Pocket & Drink Holder
- 3-Point Wall-Mounted Seat Belts
- Map Light & Drink Holders
- Front Mount Power Mirrors with Heat
- Touch Screen AM/FM/CD/AUX/iPod/MP3/USB Dash Radio with Weather Band and Back-up Monitor System

- iPod Docking Station
- Dash Fans
- Video Package (DVD Player)

AUTOMOTIVE & COCKPIT OPTIONS

- 3-Camera Back-Up Monitor System with Audio
- Driver's Side Power Seat
- Front Electric Privacy Shade/Sun Visor

INTERIOR

- Dual 13.5 Coleman Ducted Air Conditioners
- Solid Wood Raised Panel Cabinet Doors
- Ball Bearing Drawer Guides
- Day / Night Shades in Living Area & Bedroom
- Mini Blinds in Kitchen
- Linoleum Throughout in Kitchen & Bathroom
- Electric Fireplace w/ Remote Control (37KT only)
- Soft Touch Leather Sofa/Air Bed (Driver Side) (N/A 37KT)
- Euro Recliner (Passenger Side) (N/A 37KT & 37BD)
- Soft Touch Leather Sofa/Air Bed (Passenger Side) (37KT only)
- Soft Touch Leather Sofa (Passenger Side) (32VS & 37BD only)
- Booth Dinette (N/A 37KT)
- Freestanding Dinette with 2 Chairs (37KT only)

INTERIOR OPTIONS

- Soft Touch Leather Sofa/Dinette Ensemble (Driver Side) (36FD only)
- 2 Folding Chairs (36FD only)
- Euro Recliner w/ Table (Replaces Passenger Side Sofa) (32VS only)
- Slide Out Buffet with Four Chairs (32VS,35SD,37BD only)
- Electric Fireplace w/ Remote Control (32VS,35SD,36FD only)

GALLEY

- 8.0 cf. Double Door Refrigerator
- Pantry
- 3-Burner Cook top w/Drawers
- 30" OTR Convection Microwave
- Corian Kitchen Counter Top w/ Corian Edge
- Fantastic Vent Power Vent in Kitchen

GALLEY OPTIONS

- 12.3 cf. Side by Side Refrigerator (35SD & 36FD only)
- 3-Burner Range & Oven (N/A 36FD)

ENTERTAINMENT

- 32" Sony LCD High Definition TV in Cockpit Overhead (36FD & 37BD only)
- 32" Sony LCD High Definition TV in Living Area (32VS,35SD, 37KT)

- 19" LCD High Definition TV in Dining Area (37KT only)
- 19" LCD High Definition TV in Bedroom with DVD player
- Flip Down TV's with DVD player in bunk beds (37BD only)
- Cable TV & Satellite Prep

ENTERTAINMENT OPTIONS

- Home Theater Package w/ Sub Woofer
- Exterior Entertainment Center w/ 26" LCD TV & Speakers

BED & BATHROOM

- King Upgrade Innerspring Mattress (37KT only)
- Queen Upgrade Innerspring Mattress (N/A 37KT)
- Designer Bedspread & Pillow Shams w/ Pillows
- Bunk Beds (37Bd only)
- Shower with Surround
- Obscure Shower Door
- Skylight in Shower
- Foot Flush Porcelain Toilet
- Power Vent in Bathroom

SAFETY & CONVENIENCE

- Systems Control Panel
- Smoke, LPG, carbon monoxide detectors
- Fire extinguisher

ELECTRICAL & PLUMBING

- 34,000 BTU Floor Ducted Electronic Ignition Furnace
- 50-amp/120-volt Service
- Onan 5.5 kW Marquis Gold Generator
- Dual 6-volt Auxiliary House Batteries
- Battery Disconnect
- 6-gallon Gas / Electric Water Heater with Electric Ignition
- Water Heater Bypass Kit
- Washer / Dryer Prep (36FD only)
- Enclosed Heated Potable & Holding Tanks
- Black Water Tank Flush

YOUR LOCAL TMC DEALER:



Go RVing.

P.O. BOX 1486 • ELKHART, IN 46515 • CUSTOMER SERVICE: 800-860-3812 • SALES DEPARTMENT: 800-860-5658 • **CHALLENGERMOTORHOME.COM**

