



2011

ALTIMA
COURT
BREEZE
VIA

SPECIFICATIONS



TIFFIN MOTORHOMES
WHEREVER YOU GO, WE GO.

FULL BODY PAINT SCHEMES



Gold Coral



Maroon Coral



Silver Sand



Sunlit Sand



Rocky Mountain Brown

MECHANICAL SPECIFICATIONS

Automotive

STANDARD EQUIPMENT:

- Allison 1000 MH 6-speed Automatic with Lock-up
- Air Suspension
- Full Air Brakes
- Exhaust Brake

POWERGLIDE® REAR ENGINE DIESEL CHASSIS:

Engine	Navistar MaxxForce 7®
Peak HP	215 HP @ 2,600 RPM
Peak Torque (Lb. - Ft. Max Net)	560 @ 1,400
GAWR - Front	10,000 Lb.
GAWR - Rear	15,000 Lb.
GVWR	25,000 Lb.
GCWR	26,000 Lb.
Wheel Base	152"
Tire Size	265/70R19.5
Fuel Tank (Gallons)	65
Alternator Amps	170

OVERALL:

Overall Length (Approximate)	29' 7"	Fresh Water (Gallons)	70
Overall Height with Roof Air (Maximum)	11' 2"	Black Water (Gallons)	35
Interior Height	78"	Grey Water (Gallons)	50
Overall Width	95"	LPG Tank (Gallons; can only be filled to 80% capacity)	24
Interior Width	91"	Minimum Garage Height	13'
Basement Storage Cubic Feet (Approximate)	77	Trailer Hitch Capacity	5,000 Lb.

Structural

STANDARD EQUIPMENT:

- One-piece Moisture Resistant Molded Fiberglass Roof Cap
- Laminated Floor, Sidewall & Roof
- Steel/Aluminum Reinforced Structure

Exterior

STANDARD EQUIPMENT:

- Fiberglass Front & Rear Caps
- Tinted One-piece Windshield
- 6.0 kw Onan® Diesel Generator
- Horizontal Mounted Wipers
- Heated Power Mirrors
- Gel-coat Fiberglass Walls
- Exterior Patio Light
- Power Patio Awning
- Slide-out Awning(s)
- Aluminum Rims
- 13,500 BTU Low Profile Roof A/C with Heat Pump
- Quiet A/C Roof-ducted System
- Electric Step
- 1/4" Thick Single Pane Windows
- Convenient Access Doors with Gas Shocks
- Ridged Long-life Storage Boxes
- Single Handle Lockable Storage Door Latches
- Heated Water & Holding Tank Compartments
- Two 6 V Auxiliary Batteries
- Park Telephone Ready
- Digital / Analog TV Antenna
- Cable Ready TV
- 50 Amp Service
- Black Holding Tank Flush System
- Exterior Rinse Hose / Shower
- Back-up Monitor
- 110 V Exterior Receptacle
- 110 V / 12 V Converter
- Undercoating
- Roof Ladder
- External Tripod Satellite Hook-up
- Exterior Storage Compartment Lights
- Paint Protective Film
- Side-view Cameras Activated by Turn Signals
- Full Body Paint
- Level Air System

AVAILABLE OPTIONS:

- Automatic Satellite
- 15,000 BTU Low Profile Roof A/C with Heat Pump

All options may not be available in all models. Because of progressive improvements, specifications, standard & optional equipment are subject to change without notice or obligation.

Driver's Compartment

STANDARD EQUIPMENT:

- Entry Floor Light
- Step Switch & 12 V Disconnect Switch
- Non-power Cloth Driver & Passenger Seats (Flexsteel®)
- Lighted Instrument Panel
- Contemporary Wraparound Dash
- Single CD Player & AM/FM Stereo
- 12 V Dash Receptacle
- VIP 18" Steering Wheel
- Dual Dash Fans
- Power Windshield Solar/Privacy Shade
- Manual Driver & Passenger Solar/Privacy Shades
- Fire Extinguisher
- Snack / Beverage Tray

AVAILABLE OPTIONS:

- Power Cloth Driver & Passenger Seats
- Power Leather Driver & Passenger Seats
- 26" Front Overhead TV

Living Area/Dinette

STANDARD EQUIPMENT:

- U-shaped Dinette Converts to Bed
- 26" Midsection TV
- 68" Cloth DE Sofa Bed on Driver's Side

AVAILABLE OPTIONS:

- Ultra Leather DE Sofa Bed on Driver's Side
- DVD Player (NA with Surround Sound Option)
- Home Theater Surround Sound System (Includes DVD Player)

Kitchen

STANDARD EQUIPMENT:

- Solid Surface Countertops
- Solid Surface Backsplash
- 2-burner Cooktop
- Convection Microwave with Exterior Venting
- 6 Cubic Foot Refrigerator

AVAILABLE OPTIONS:

- Icemaker in Freezer
- Solid Wood Refrigerator Panels

Bath

STANDARD EQUIPMENT:

- Medicine Cabinet
- Skylight in Shower
- Satin Nickel Vanity Faucet
- Fiberglass Molded Shower
- Solid Surface Vanity Top
- Fantastic® Fan

Bedroom

STANDARD EQUIPMENT:

- Wardrobe with Automatic Light
- Bed Comforter with Throw Pillows
- Carbon Monoxide Detector
- Innerspring Queen Mattress (60" x 75")
- LPG Leak Detector
- Wall-to-wall Carpeting
- Solar / Privacy Shades
- Under Bed Storage

AVAILABLE OPTIONS:

- Vinyl Tile Flooring in Bedroom
- 26" TV

General Interior

STANDARD EQUIPMENT:

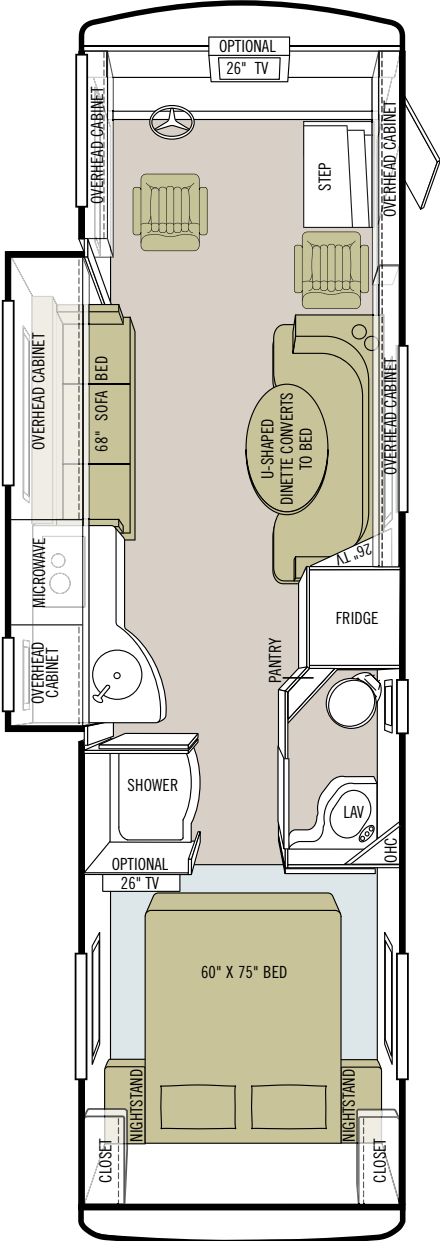
- Raised Panel Cabinet Doors
- Vinyl Headliner
- Wall-to-wall Vinyl Tile Flooring in Living Room, Kitchen & Bath
- Ball Bearing Drawer Slides
- Scotchgard® Treated Carpet & Fabrics
- Solar / Privacy Shades in Living Room
- Power Roof Vents
- Tank Level Monitor System
- Smoke Detector
- 10-gallon DSI Gas / Electric Water Heater
- Folding Step Well Cover
- Fluorescent Ceiling Lights

AVAILABLE OPTIONS:

- 2000 Watt Inverter
- Vacuum Cleaner System
- Ivory Cream Solid Cabinet Doors & Drawer Fronts
- English Chestnut Solid Cabinet Doors & Drawer Fronts
- Medium Alderwood Solid Cabinet Doors & Drawer Fronts

FLOOR PLAN

28 BR



OPTIONAL TILE FLOOR
IN BEDROOM

INTERIOR SPECIFICATIONS



Ivory Cream



English Chestnut
AVAILABLE ONLY WITH TILE SHOWN



Medium Alderwood
AVAILABLE ONLY WITH TILE SHOWN



Fossil



Maui



Summer



AllLEGRO Breeze cabinet doors are made of solid wood. Cabinet finishes are available in combination with any fabric scheme. Options may not be available for every model. Specifications and standard or optional equipment subject to change without notice or obligation.

BEDROOM SUITE FABRIC



Fossil

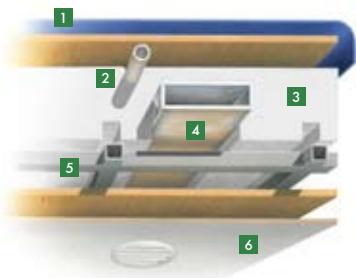


Maui



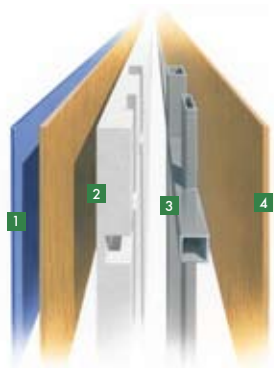
Summer

CONSTRUCTION SPECIFICATIONS



Roof

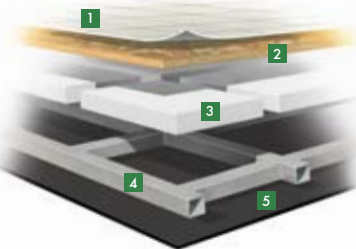
1. One-piece, moisture resistant molded fiberglass roof cap provides insulation and strength and prevents water intrusion
2. A/C Condensation Drainage System that runs internally through the roof insulation and down the sidewalls, redirecting water underneath the motor home
3. 5½" formed insulation
4. Quiet Air Cooling System with return air and foil-wrapped cooling exhaust ducts
5. Durable, tubular aluminum roof skeleton
6. Easy-to-clean soft touch vinyl ceiling panel



Sidewall

1. Gel-coat fiberglass outside wall panel
2. High-performance thermal insulation
3. Durable, yet lightweight, tubular aluminum wall skeleton
4. Decorative inside wall panel

All sidewalls are approximately 2" thick



Floor

1. Vinyl tile floor bonded to high-impact oriented strand board
2. High-level engineered oriented strand board
3. High-performance thermal insulation
4. Durable, tubular steel floor skeleton
5. Woven moisture barrier material

10-YEAR LIMITED UNITIZED CONSTRUCTION WARRANTY The structural integrity of the entire coach is guaranteed for the next 10 years. Warranty includes wall separation and inner frame weakness.

5-YEAR LIMITED LAMINATION WARRANTY We guarantee against all exterior fiberglass delamination or wall separation.



TIFFIN MOTORHOMES

WHEREVER YOU GO, WE GO.

105 2ND STREET NW RED BAY, AL 35582 CALL 256.356.8661 FAX 256.356.8219
FOR PARTS AND SERVICE CALL 256.356.0261

Phaeton®, Allegro®, Allegro Breeze®, Allegro RED®, Allegro Bus®, Zephyr®, Roughing It Smoothly®, Open Road® and Pusher® are registered trademarks of Tiffin Motorhomes. For more specifics on what makes a Tiffin Motorhome, go to tiffinmotorhomes.com