

# ONYX



2011 Onyx R-Vision

[www.rvisiontowables.com](http://www.rvisiontowables.com)

800.282.4654



25RB in Spotlight décor



- ▲ A three burner cook top with glass top and sealed burners makes cooking a breeze. An integrated control pad and half time oven add to the convenience. An innovative folding faucet sink with glass cover increases counter space.

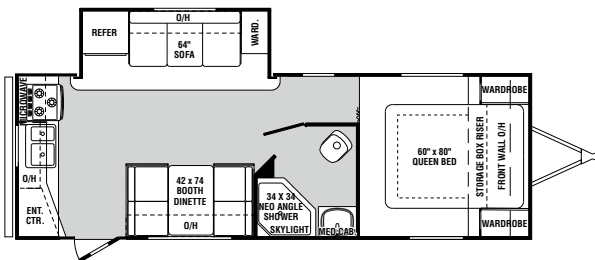
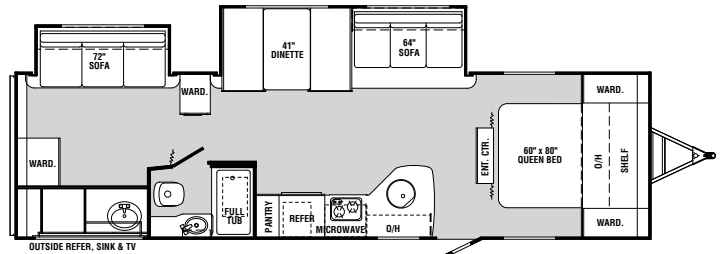
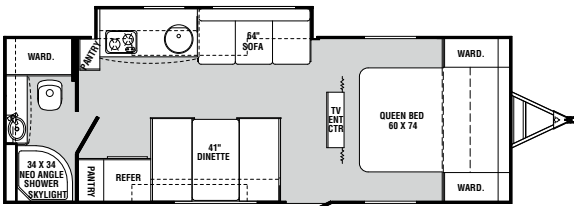
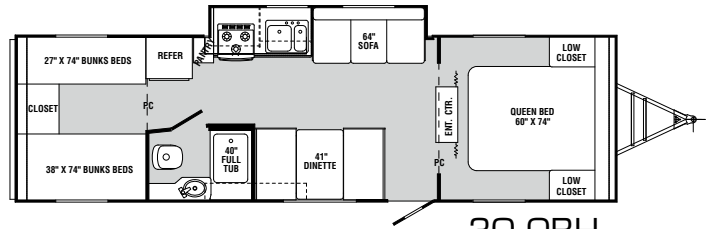
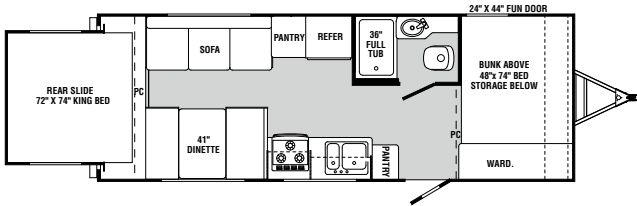
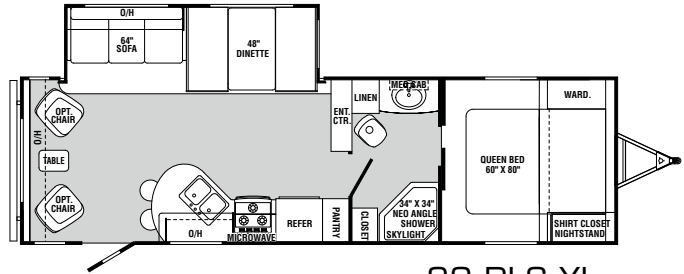
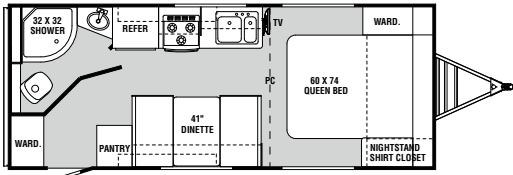
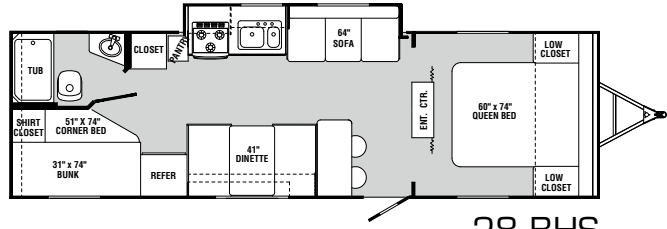
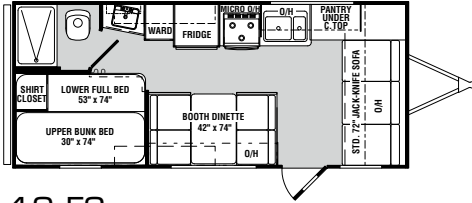


- ▲ The Onyx features an euro-designed contemporary interior. Rich two-tone cabinetry with beautiful glass inlays create an inviting, residential feel. All cabinetry doors feature roller bearing drawer guides for superior durability.

2011 Specifications	19 FS	22 QB	24 RS	25 RB	27 RKSXL	28 BHS	29 RLSXL	30 QBH	31 BHDXL
Gross Vehicle Weight Rating	TBD	TBD	TBD	6,160	TBD	TBD	TBD	TBD	TBD
Dry Hitch Weight (Appr.)	TBD	TBD	TBD	TBD	TBD	TBD	TBD	TBD	TBD
Dry Axle(s) Weight (Appr.)	TBD	TBD	TBD	TBD	TBD	TBD	TBD	TBD	TBD
Dry Unloaded Vehicle Weight (Appr.)	TBD	TBD	TBD	TBD	TBD	TBD	TBD	TBD	TBD
Net Carrying Capacity (NCC)	TBD	TBD	TBD	TBD	TBD	TBD	TBD	TBD	TBD
Tire Size	TBD	TBD	TBD	TBD	TBD	TBD	TBD	TBD	TBD
Tire Load Range	TBD	TBD	TBD	TBD	TBD	TBD	TBD	TBD	TBD
Overall Length	TBD	TBD	TBD	TBD	TBD	TBD	TBD	TBD	TBD
Overall Height (Including A/C)	TBD	TBD	TBD	TBD	TBD	TBD	TBD	TBD	TBD
Exterior Width (w/o Awning)	8'-0"	8'-0"	8'-0"	8'-0"	8'-0"	8'-0"	8'-0"	8'-0"	8'-0"
Water Heater	6 Gal	6 Gal	6 Gal	6 Gal	6 Gal	6 Gal	6 Gal	6 Gal	6 Gal
Grey Tank	30 Gal	30 Gal	30 Gal	30 Gal	30 Gal	30 Gal	30 Gal	30 Gal	30 Gal
Black Tank	30 Gal	30 Gal	30 Gal	30 Gal	30 Gal	30 Gal	30 Gal	30 Gal	30 Gal
Fresh Tank	30 Gal	30 Gal	30 Gal	30 Gal	30 Gal	30 Gal	30 Gal	30 Gal	30 Gal
Two 30 lb. L.P. Tanks with Automatic Changeover	S	S	S	S	S	S	S	S	S

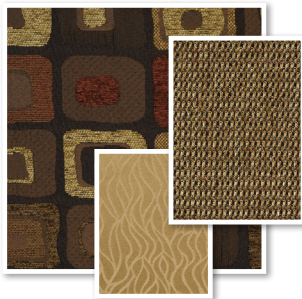
\* Weights may vary by options. \*\* Tank manufacturer's listed water capacity (WC). Actual filled LP capacity is 80% of listing due to safety shut off required on tank.

# FLOORPLANS



# DECORS

ELEMENT



SPOTLIGHT



**BODY CONSTRUCTION**

- 6" I-Beam Frame Powder Coated  
(N/A on 27RKS, 29RLS, 31BHDS)
- 8" I-Beam Frame Powder Coated  
(Std. on 27RKS, 29RLS, 31BHDS)
- White Wheels
- Frame Mounted Entry Step (Double Self Storing Step)  
(N/A on 27RKS, 29RLS, 31BHDS)
- Frame Mounted Entry Step (Triple Self Storing Step)  
(Std. on 27RKS, 29RLS, 31BHDS)
- Wheel Wells
- Laminated Flooring; Two Layers Luan, Aluminum Frame w/Foam, Luan, and Darco
- Heated and Enclosed Underbelly
- Laminated Sidewall; Fiberglass Skin, Luan, Aluminum Frame w/Foam, and Wallboard
- Laminated Roof; Seamless Rubber Roof, Luan, Aluminum Frame w/Foam, and Ceiling Board (22' 6" Coaches and Shorter) (Std. on 19FS, 22QB)
- Laminated Roof; Seamless Rubber Roof, Luan, Aluminum Frame w/Foam, and Ceiling Board 3" (22' 6" Coaches and Longer) w/Ducted A/C (N/A on 19FS, 22QB)
- Flush Floor Slide (Std. on 27RKS, 29RLS, 31BHDS)
- Radius Exterior Storage Door w/Door Catch
- Sidewall Fun Door (Std. on 24RS, 28BHS, 30QBH, 31BHDS)
- Slide-Out Rear Wall King Bed Slide (Std. on 24RS)
- Radius Front Wall Profile
- L.P. Tank Cover
- Molded ABS Fender Skirts
- Smooth Fiberglass Exterior Rear Wall
- Vinyl Exterior Graphics

**APPLIANCES AND ACCESSORIES**

- Double Door 6 Cu. Ft. Refrigerator
- 2 Burner Cook Top w/Glass Top
- Lighted Powered Range Hood
- Pre-Wire For Microwave
- TV Prep Living Area. Mounting Bracket Installed When Necessary
- TV Prep Bunk Area. Mounting Bracket Installed When Necessary (Std. on 28BHS, 30QBH, 31BHDS)
- Systems Monitor Panel - Battery Levels, Holding Tank Levels, & Water Pump Switch
- Swivel TV In All Non-Bunk House Floorplans (Std. on 25RB)
- Bunk House Floorplan Bedroom TV Prep W/Backer And Outlet (Std. on 28BHS, 30QBH, 31BHDS)

**INTERIOR**

- Interior Fabrics (2)-Spot Light, Elements
- Cabinets- Fulton Cherry/ Concert Cherry 2 Tone
- Square Frame Flat Panel Cabinet Doors w/Mortise and Tenon Corners
- Mirrored Glass In Dinette OHC  
(Std. on 22QB, 25RB, 28BHS, 30QBH, 31BHDS)
- Mirrored Glass In Sofa OHC  
(Std. on 27RKS, 29RLS, 31BHDS)
- Decorative Wall Board
- Wood Grain Panel Refrigerator Insert Doors
- Wallpaper Border Main Living Area, Dinette, Kitchen

- Decorative Slide-Out Fascia
- Linoleum Throughout
- Wood Grain Bath Door
- Fabric Close-Off Curtain To Bedroom In Expandable Or Rear Wall Slide-Out Location (Std. on 19FS, 22QB, 24RS)
- Fabric Close-Off Curtain Bunks  
(Std. on 24RS, 28BHS, 30QBH, 31BHDS)
- Folding Accordion Door Close Off To Bedroom  
(N/A on 19FS, 22QB, 24RS)
- Center Entertainment Unit w/26" LCD TV Option  
(Std. on 25RB, 28BHS, 30QBH, 31BHDS)
- Bedspread w/Reverse Shams and Pillows
- Living Room- Hard Tops, Night Shades
- Galley - Soft Top, Mini Blinds
- Bunks- Curtain
- Bedroom- Hard Tops w/Curtains, Night Shades- Fabric Tech\*

**FURNITURE**

- Queen Bed (N/A on 19FS, 24RS)
- King Bed (Rear Slide) (Std. on 24RS, 31BHDS)
- Bunk Bed w/Vinyl Back Upper Only
- Double Bunk Beds (Std. on 24RS, 28BHS, 30QBH, 31BHDS)
- Fabric Covered Fold Down Sleeper Sofa (N/A on 22QB)
- 2- Barrel Chairs (Std. on 29RLS)
- 48" Booth Dinette w/Fabric Cushions w/Vinyl Backs 4" Arched Back No Fabric Top Storage w/Doors Underneath (N/A on 19FS)

**ELECTRICAL SYSTEMS AND LIGHTS**

- Electrical Management System - 30AMP
- Detachable 30AMP Power Cord
- A-Frame Battery Rack
- 55AMP Converter w/Charger
- Porch Light / Security Light
- Patio Side 120V Exterior Recept
- Patio Side Cable TV Hook-Up
- Double Pancake All Ceiling Locations
- Kitchen Soffit Lights (Std. on 25RB, 31BHDS)
- Interior Ceiling Light Switches
- Single Pancake Lights at Bunk Locations  
(Std. on 24RS, 28BHS, 30QBH, 31BHDS)

**PLUMBING AND LP SYSTEMS**

- Smev® Galley Sink w/Single Basin, Folding Faucet and Glass Cover Included
- 6 Gal. Gas/DSI/Electric Water Heater
- Water Heater By-Pass
- Two 30 lb. L.P. Tanks w/Automatic Changeover w/Cover
- Rotocast Holding Tanks
- Rotocast Fresh Tank

**HEATING, VENTS AND AIR CONDITIONING**

- 20M BTU Hydro Flame Electronic Ignition Furnace (No Door) (Std. on 19FS, 22QB, 24RS, 25RB)
- 30M BTU Hydro Flame Electronic Ignition Furnace  
(N/A on 19FS, 22QB, 24RS, 25RB)

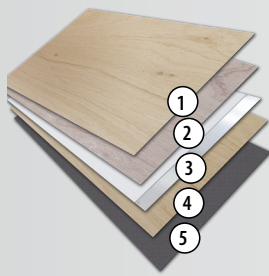
- Gas Line Hook-Up at Front of Coach
- A/C 13,500 BTU - Non Ducted (Std. on 19FS, 22QB, 24RS)
- A/C 13,500 BTU - Ducted (N/A on 19FS, 22QB, 24RS)

**WINDOWS, DOORS AND AWNINGS**

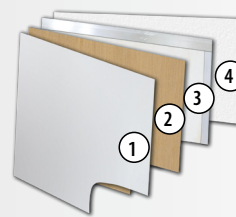
- Radius Windows
- Safety Glass Windows
- Galley Window
- Radius Entry Door w/Window, Dead Bolt, and Screen Door
- Skylight in Bathroom
- Exterior Entry Assist Entry Door Handle
- A&E Manual Awning

**OPTIONS**

- Aluminum Wheels (4)
- Radial Tires (5) Forced Option
- Spare Tire w/Cover
- Equa-Flex Axle (S)
- Electric Tongue Jack w/Light
- Front Diamond Plating
- Rear Ladder (N/A on 24RS)
- Stabilizer Jacks (4)
- Power Stabilizer Jacks
- Half Time Oven - Black
- AM/FM/CD/DVD/I-Pod/MP3 Stereo w/2 Exterior Speakers, Exterior Selector Switch
- 26" LCD TV
- 26" LCD TV Inside Outside Kitchen Inside-Outside Viewing  
(N/A on 19FS, 22QB, 24RS, 25RB, 28BHS)
- TV Antenna w/Cable
- RVQ Grill w/Stand
- Fabrics- Spot Light, Element
- Raised Panel Refer Insert
- Hide A Bed IPO Fold Down Sleeper  
(Opt. on 27RKS, 29RLS, 31BHDS)
- Table (4) Chairs (Opt. on 27RKS, 29RLS, 31BHDS)
- Enclosed Shower Door
- Outside Shower
- No Fuss Flush (Forced Option)
- A/C 13,500 BTU - Ducted (Opt. on 19FS, 22QB, 24RS)
- A/C 15,000 BTU - Ducted (N/A on 19FS, 22QB)
- Fantastic Attic Fan
- Swing Away Entry Door Handle
- Electric Patio Awning

**CONSTRUCTION FEATURES****FLOOR LAMINATE**

1. Luan
2. Luan
3. Aluminum Frame and Foam
4. Luan
5. Darco

**SIDEWALL LAMINATE**

1. Fiberglass Skin - Dent Resistant, Low Maintenance
2. Luan
3. Aluminum Frame and Foam
4. Wallboard

**YOUR DEALER:****ONYX****R-VISION**606 NELSON'S PKWY., WAKARUSA, IN 46573  
800.282.4654 • WWW.RVISIONTOWABLES.COM

As R-Vision constantly strives to improve our product, all specifications listed in this informative brochure are subject to change without notice or obligation. Photos may show optional equipment which is not included in the purchase price of the unit. Test drive and review a current model on your dealer's lot today.