

2011

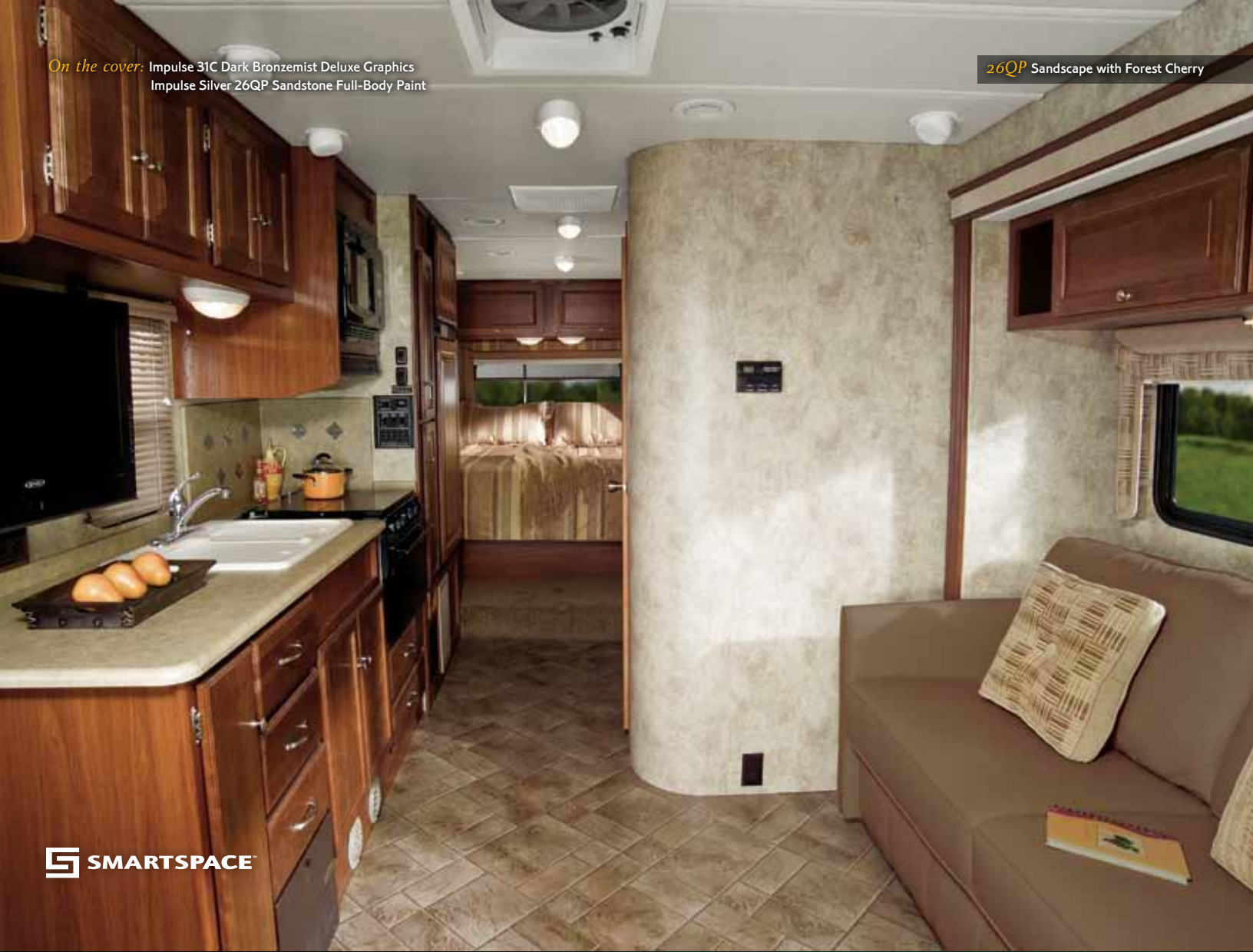
IMPULSE | IMPULSE *Silver*



IMPULSE or IMPULSE
Silver
Which is right for you?
Details on page 4.

On the cover: Impulse 31C Dark Bronzest Deluxe Graphics
Impulse Silver 26QP Sandstone Full-Body Paint

26QP Sandstone with Forest Cherry



 SMARTSPACE

SET YOURSELF FREE

Families big and small will find a lot to love about the 2011 Itasca Impulse.® Five distinct models with a wide range of options provide the variety to perfectly fit your traveling needs. Factor in the host of standard features designed to maximize functionality and you

won't be able to resist the urge to hit the road in your Impulse. Choose the new Impulse Silver (NA 24V) for additional interior upgrades and sleek exterior styling. So go out and be spontaneous. Be free. And be yourself in a 2011 Itasca Impulse.



DESIGNED FOR ENTHUSIASTS

Owners love their Itasca motor homes, and with good reason. The Recreation Vehicle Dealer Association annually bestows the Quality Circle Award to manufacturers that provide exceptional products, service

and support. Only one manufacturer has received this award for fourteen consecutive years: Winnebago Industries,® proud manufacturer of the Itasca Impulse and Impulse Silver.



INVITE YOUR FRIENDS

Those with traveling companions will appreciate the standard cab bunk with available 19" LCD TV and DVD player (shown above). If you travel with a smaller crowd, choose the overhead entertainment center (NA 26Q/26QP), complete with a 32" LCD TV and home theater sound system. For the best of both worlds, the 26Q/26QP comes standard with a cab bunk and you can add a 26" LCD TV on a swivel mount in the galley (shown below) that can be viewed from both the sofa and bunk.

There are plenty of ways to relax, with cab seats that turn to face the living area (26Q/26QP) and the Comfort Sofa Sleeper (available 26Q/26QP and 31C/31CP) that easily converts into a bed with a self-inflating mattress. Preparing meals is easy, thanks to the kitchen with 3-burner range, microwave oven and available conventional oven. Impulse Silver package upgrades include the BenchMark® dinette with Dream Dinette™ table and a water filtration system.

Features:

- Available Entertainment Center
- Video Selection System
- Available RV Radio® w/LCD Touch Screen and Rearview Monitor
- Available Comfort Sofa Sleeper (26Q/26QP and 31C/31CP)



Comfort Sofa Sleeper

This 2-in-1 sofa redefines comfort and convenience.

- 1) By day it's a plush sofa.
- 2) It converts easily into a bed.
- 3) The mattress inflates and deflates with an automatic pump.



SOLITUDE



31C Mahogany Nite with Coffee-Glazed Sierra Maple

A private master bedroom with a queen-size bed ensures every day ends in relaxing fashion. You will also appreciate the abundant storage and available LCD TV (NA 24V). Larger families will enjoy the bunk beds in the 31J/31JP. Maintain privacy and filter the sun by selecting the MCD American Duo solar/blackout roller shades as part of the interior upgrade package.

The bathroom features a flexible showerhead, skylight and a retractable, self-cleaning shower screen (curved glass shower door 31N/31NP). You will also appreciate the additional water pump switch conveniently located near the shower. The water heater can be upgraded to include motoraid and the Energy Management System, which helps prevent tripped campground circuits (NA 24V).



31J



IMPULSE *Silver*

Take Your
Impulse to the
Next Level

Want to get more out of your Impulse? Take your motor home experience to the next level with the Itasca Impulse Silver package. It includes a host of additional standard features plus optional full-body paint that is only available with the Impulse Silver package.



The BenchMark full-comfort dinette, available only with the Impulse Silver package, features seats that flip up to reveal spacious storage and quickly converts into a bed.

	OPTIONAL ON IMPULSE	STANDARD ON IMPULSE SILVER	OPTIONAL ON IMPULSE SILVER
--	------------------------	----------------------------------	----------------------------------

Exterior Features

Full fiberglass front cap		■	
Fiberglass running boards w/wheel lips		■	
Four available full-body paint packages			■
Electric exterior mirrors	■	■	
Electric patio awning	■	■	
Stainless steel wheel liners	■	■	
Electric entrance step	■	■	
Deluxe graphics package	■	■	

Interior Features

Dash appliqué	■	■	
Vinyl ceiling		■	
Thermo-formed countertops and galley backsplash		■	
BenchMark® full-comfort dinette		■	
Single-control galley and lavatory faucets		■	
Large double-door refrigerator w/raised panel stile-and-rail inserts		■	
China toilet		■	
Water filtration system		■	
Interior Upgrade Package	■	■	
■ Dream Dinette™ table			
■ Range cover			
■ Bedroom window side valance treatment			
■ Polyethylene sink covers			
■ Sofa throw pillows (2)			
■ MCD American Duo® solar blackout roller shades			

No Shortcuts – No Compromises

You can compare features. You can compare styles. But when it comes to quality construction, there is no comparison. Only motor homes manufactured by Winnebago Industries harness the legendary strength and durability of our SuperStructure® construction process—a process we've been perfecting for more than 50 years.

SuperStructure means a solid framework, steel and aluminum substructures and components built in-house to our exacting standards. It means managing each detail to ensure the integrity and quality of every coach. It means barcoding parts to save time during service and running every coach through a gauntlet of tests including a high-pressure water test before it leaves the factory.

Where other manufacturers cut corners, SuperStructure ensures the features you can't see are treated with the same care as the ones you can. When you buy an Itasca motor home, you are getting a coach that is built for you—and built to last.



The one-piece **fiberglass roof** is backed by a 10-year limited parts-and-labor roof skin warranty. Fiberglass offers superior strength and durability over less attractive rubber roofs found on so many competitive models that can streak and degrade over time.

SUPER STRUCTURE®

Durable, lightweight **Thermo-Panel® sidewalls** combine fiberglass, high-density block-foam insulation and the inner wall surface with aluminum support structures.

Metal substructures secure cabinets and appliances to add safety and stability.

An **electrodeposition coating** helps protect critical steel components.



Specially engineered **interlocking joints** connect the floor, sidewalls and roof into a cohesive unit.

STORAGE

Want to bring more? Then either the 26Q/26QP or 31C/31CP with side and rear storage compartments is the motor home for you. This spacious compartment includes a drain plug and a recessed cover that converts into a picnic table. Add the exterior wash station to keep mud and dirt outside.



The TrueLevel™ tank monitoring system uses sonar technology to provide accurate tank levels without probes that can corrode or clog.

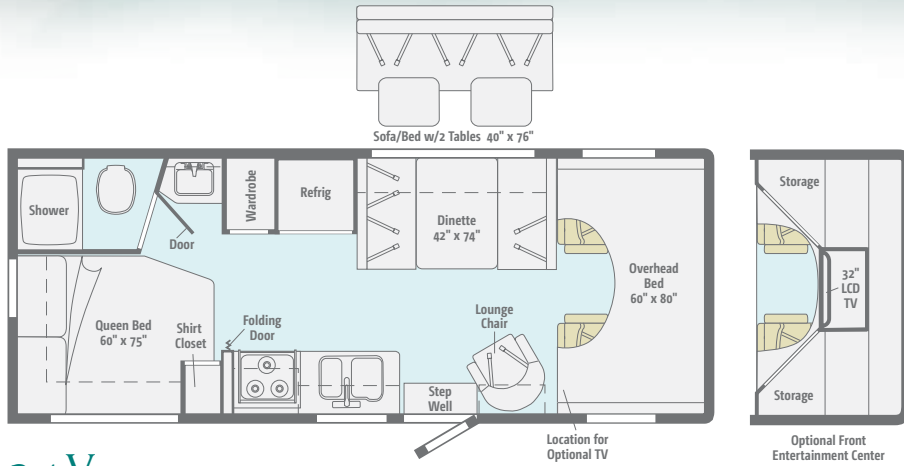


TAKE A TOUR

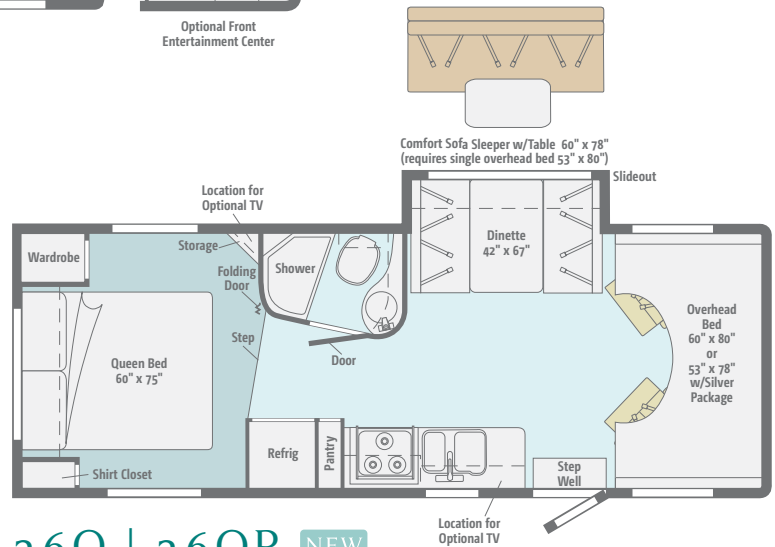
We're proud of our processes, state-of-the-art facilities and the people who make Winnebago Industries number one. We invite you to visit our complex in Forest City, Iowa, for a first-hand look at the dedication and technology behind every motor home we build.

FLOORPLANS & SPECIFICATIONS

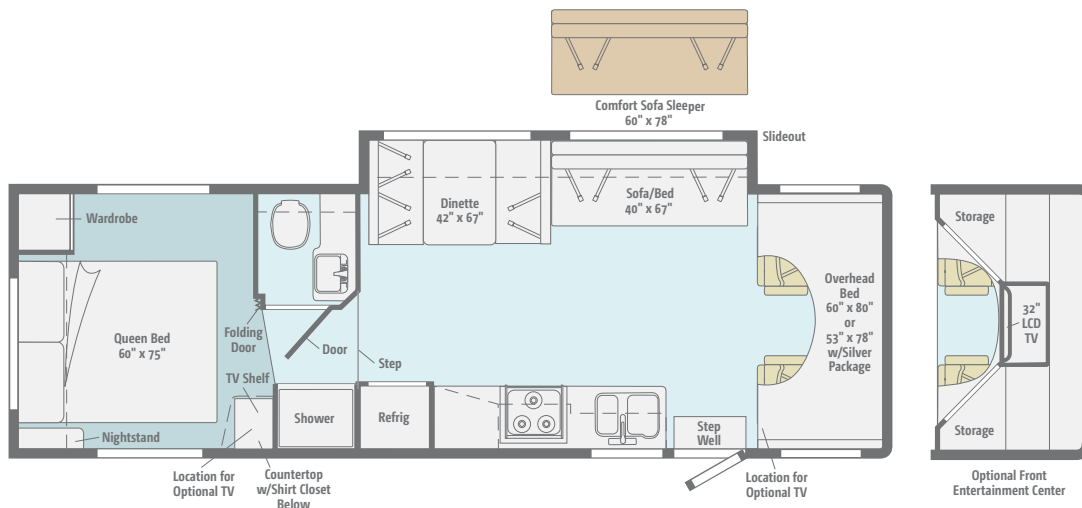
Dimensions shown are for sleeping space only and may vary due to styling differences. Dashed lines denote overhead storage areas. Floorplans and specifications are also available online at Goltasca.com.



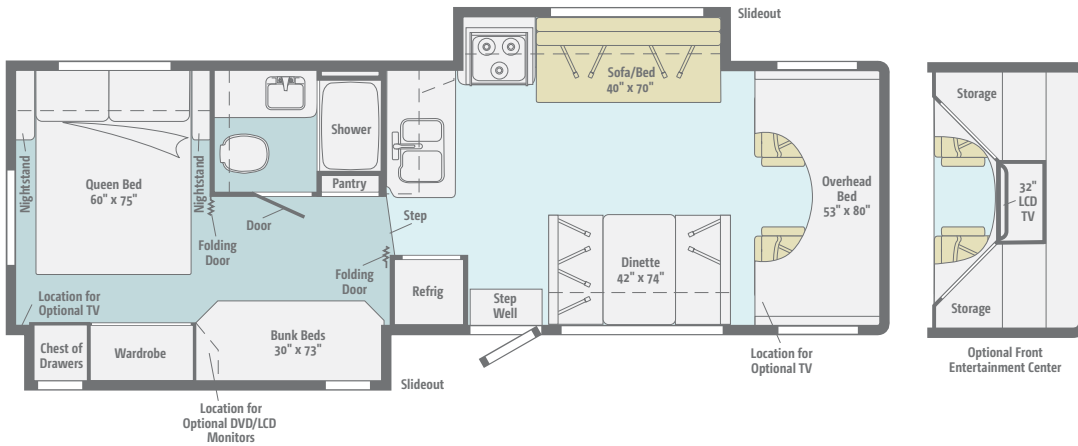
24V
IMPULSE



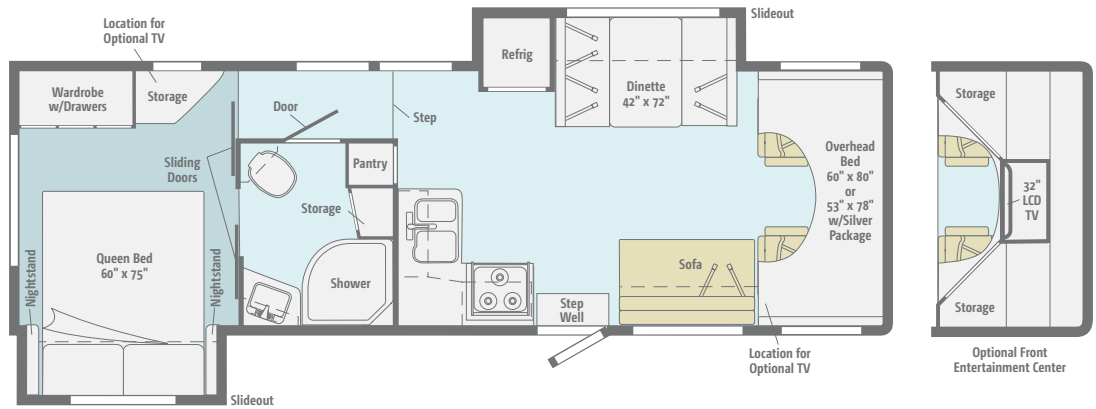
26Q | 26QP **NEW**
IMPULSE IMPULSE
Silver



31C | 31CP
IMPULSE IMPULSE
Silver



31J | 31JP NEW
 IMPULSE IMPULSE
Silver



31N | 31NP
 IMPULSE IMPULSE
Silver

Weights & Measures

	24V	26Q/26QP	31C/31CP	31J/31JP	31N/31NP
Length	25'	27'10"	31'8"	32'1"	32'
Exterior Height ¹	11'1"	11'2"/11'3"	11'1"	11'1"	11'1"
Exterior Width ²	8'5.5"	8'5.5"	8'5.5"	8'5.5"	8'5.5"
Exterior Storage ³ (cu. ft.)	39.1	74.3	86.8	74.3	28.5
Awning Length	11'6"	13'	16'	10'6"	16'
Interior Height	6'8"	6'10"	6'10"	6'10"	6'10"
Interior Width	8'	8'	8'	8'	8'
Freshwater Capacity w/Heater ⁴ (gal.)	42	42	42	42	42
Holding Tank Capacity - Black/Gray ⁴ (gal.)	39/29	30/30	41/41	30/39	44/41
LP Capacity ⁵ (gal.)	18	18	18	18	18
Fuel Capacity (gal.)	55	55	55	55	55
GCWR ⁶ (lbs.)	18,500 ^A / 20,000 ^B	20,000 ^B	20,000 ^B	20,000 ^B	20,000 ^B
GVWR (lbs.)	11,500 ^A / 14,500 ^B	14,500 ^B	14,500 ^B	14,500 ^B	14,500 ^B
GAWR - Front (lbs.)	4,600 ^A / 5,000 ^B	5,000 ^B	5,000 ^B	5,000 ^B	5,000 ^B
GAWR - Rear (lbs.)	7,800 ^A / 9,500 ^B	9,500 ^B	9,500 ^B	9,500 ^B	9,500 ^B
Wheelbase	158"	190"	220"	220"	215"

^A Ford® E350 Chassis ^B Ford E450 Chassis * 6'4" Rear of coach

Chassis

Ford® E350 Chassis (24V)

- 305-hp 6.8L Super-Duty V10 SEFI Triton® engine
- TorqShift™ 5-speed automatic transmission w/overdrive
- 120-amp. alternator

Ford E450 Chassis (26Q/26QP, 31C/31CP, 31J/31JP, 31N/31NP)

- 305-hp 6.8L Super-Duty V10 SEFI Triton engine
- TorqShift 5-speed automatic transmission w/overdrive
- 120-amp. alternator

4-wheel ABS

7-pin trailer wiring

Trailer Hitch⁶: 5,000-lb. drawbar/350-lb. max vertical tongue weight

Stainless steel wheel covers

Optional Equipment

Ford E450 Chassis (24V)

- 305-hp 6.8L Super-Duty V10 SEFI Triton engine
- TorqShift 5-speed automatic transmission w/overdrive
- 120-amp. alternator

Stainless steel wheel liners

Rear auxiliary air springs

Silver Package

Available for 26QP, 31CP, 31JP, 31NP

Silver Package Includes: fiberglass front cap, deluxe graphics or available full-body paint, tail lights w/chrome ring, fiberglass running boards w/wheel lips, power mirrors, powered patio awning, stainless steel wheel liners, vinyl ceiling, china toilet, thermo-formed laminated countertops, galley backsplash, BenchMark® dinette w/Dream Dinette™ table, single-control galley and lavatory faucets, range and sink covers, large double-door refrigerator w/raised-panel stile-and-rail insert, water filtration system, sofa throw pillows (2), side valance window treatment on bedroom windows, MCD American Duo® solar/blackout roller shades, dash appliqué

Cab Conveniences

Cab Seats: armrests, lumbar support and multi-adjustable slide/recline

Swivel/slide driver and passenger seats (26Q/26QP)

AM/FM stereo/CD player

12-volt powerpoint

Power steering w/tilt and cruise control

Power door locks

Sunvisors

Manually adjustable exterior mirrors

Optional Equipment

Power mirrors w/defrost

Dash appliqués

RV Radio®/Rearview Monitor System: 6.5" LCD touch screen color monitor, remote, iPod/MP3 input, color rear camera w/one-way audio

Plug-N-Play Sirius® Satellite System: two docking ports, receiver, 6-month complimentary subscription and iPod interface connection (requires RV Radio/rearview monitor system)

Interior

Amplified digital TV antenna system

Satellite system ready

MCD American Solo® blackout roller shades (lounge, dinette and bedroom)

Mini blinds (galley)

Systems monitor panel

Roof vent(s) (lounge area)

Powered roof vent (bath)

Cab divider curtain (NA 26Q/26QP)

Front wraparound curtain (26Q/26QP)

Bunk privacy curtain

Bunk ladder

Tinted windows

Key-activated slideroom master lock switch (26Q/26QP, 31C/31CP, 31J/31JP, 31N/31NP)

Optional Equipment

Upgrade Package: Dream Dinette table, range cover, sink covers (2), sofa throw pillows (2), MCD American Duo solar/blackout roller shades, side valance window treatment on bedroom window

19" DC, LCD TV w/swivel and telescoping bracket (26Q/26QP)

19" DC, LCD TV w/AM/FM radio, alarm clock, CD/DVD player and video selection system in front bunk area (NA 26Q/26QP)

Carpet in lounge and dining area

Front Overhead Entertainment Center: 32" LCD TV w/remote, home theater sound system w/DVD player, amplifier, receiver, speakers, subwoofer and video selection system (NA 26Q/26QP)

Entertainment System: 26" LCD TV w/remote, swivel and telescoping bracket, home theater sound system w/AM/FM receiver, DVD player, video selection system, amplifier, speakers (5) and subwoofer (located forward end of galley) (26Q/26QP)

Vinyl floorcovering throughout (excludes cab, stepwell and slideout room) (26Q/26QP, 31C/31CP, 31J/31JP, 31N/31NP)

Tinted, dual-glazed thermo-insulated windows (24V, 26Q/26QP, 31C/31CP)

Powered ventilator fan (lounge area)

Kitchen

Laminate countertops

Norcold® double-door refrigerator/freezer

Microwave oven

3-burner range top w/storage below

Vented range hood

Optional Equipment

3-burner range w/oven

Microwave/convection oven

Bath

Laminate countertop

Shower w/wall surround

Self-cleaning retractable shower screen (NA 31N/31NP)

Curved glass shower door (31N/31NP)

Flexible showerhead

Skylight

Water pump switch

Optional Equipment

Textured glass shower door (31C/31CP)

Bedroom

Queen bed w/innerspring mattress and bedspread (removable mattress cover on 24V), **pillows and shams**

Bunk beds with foam mattresses, storage compartment, pillows w/shams and privacy curtains (31J/31JP)

Optional Equipment

19" DC, LCD TV (NA 24V)

8.5" LCD monitors (2) w/DVD and headphones in bunks (31J/31JP)

Exterior

Manual entrance step

Rubber tread stepwell

Porch light

Main entrance w/screen door

Steel running boards

Rear mud flaps

Ladder

Recessed rotocast storage compartments w/drain plug, cover and cover/folding table (26Q/26QP, 31C/31CP)

Premium high-gloss sidewall skin

Optional Equipment

Automatic entrance step

Powered patio awning

Heating & Cooling System

13,500 BTU roof-mounted air conditioner (24V)

14,800 BTU roof-mounted air conditioner (26Q/26QP, 31C/31CP, 31J/31JP, 31N/31NP)

25,000 BTU low-profile furnace (24V)

30,000 BTU low-profile furnace (26Q/26QP, 31C/31CP, 31J/31JP, 31N/31NP)

Electrical System

AC/DC load center, 45-amp. converter/charger

30-amp. power cord

TV jack and DC receptacle near entrance door

Deep-cycle, Group 31 battery

Coach battery disconnect system

Auxiliary start circuit

Automatic dual-battery charge control

Optional Equipment

4,000-watt Cummins Onan® MicroQuiet™ gas generator

Additional deep-cycle, Group 31 battery

300-watt DC/AC inverter

Plumbing System

City water hook-up

Lockable water tank fill

On-demand water pump

6-gallon LP water heater w/electronic ignition

Winterization Package: water heater bypass valve and siphon tube

TrueLevel™ holding-tank monitoring system

Manual dump valve

Permanent-mount LP tank w/gauge

Optional Equipment

Heated electric drainage system

6-gallon 110 V/LP water heater w/electronic ignition, rear auto heater and Energy Management System (NA 24V)

6-gallon 110 V/LP water heater w/electronic ignition (24V)

Exterior wash station w/lighted pump switch

Safety

Seat belts

Dual airbags

Child seat tether anchor

LP, smoke and carbon monoxide detectors

10 BC fire extinguisher

Ground fault interrupter

High-mount brake lamp

Warranty⁷

12-month/15,000-mile basic warranty,⁸ 36-month/36,000-mile limited warranty on structure,⁸ 10-year limited parts-and-labor warranty on roof skin⁸

1 The height of each model is measured to the top of the tallest standard feature and is based on the curb weight of a typically equipped unit. The actual height of your vehicle may vary by several inches depending on chassis or equipment variations. Please contact your dealer for further information.

2 Impulse and Impulse Silver floorplans feature a wide-body design – over 96". In making your purchase decision, you should be aware that some states restrict access on some or all state roads to 96" in body width. Before making your purchase decision, you should confirm the road usage laws in the states of interest to you.

3 The load capacity of your motor home is designated by weight, not by volume, so you cannot necessarily use all available space when loading your motor home.

4 Capacities are based on measurements prior to tank installation. Slight capacity variations can result due to installation applications.

5 Capacities shown are tank manufacturer's listed water capacity (W.C.) Actual filled LP capacity is 80% of listing due to overfilling prevention device on tank.

6 Actual towing capacity is dependent on your particular loading and towing circumstances which includes the GVWR, GAWR, and GCWR, as well as adequate trailer brakes. Please refer to the Operator's Manual of your vehicle for further towing information.

7 See separate chassis warranty.

8 See your dealer for complete warranty information.

NA Not Available

Not all items available in combination. See dealer for details.

Winnebago Industries® continuing program of product improvement makes specifications, equipment, model availability, and prices subject to change without notice. Comparisons to other motor homes are based on the most recent information available at printing.

DÉCOR AND EXTERIORS

INTERIOR DÉCOR

Choose from three fabric collections. Upgrade to UltraLeather™ furniture for luxurious comfort that is both durable and easy to clean. The cabinetry comes in your choice of Coffee-Glazed Sierra Maple, Belmont Maple, or Forest Cherry finish with satin nickel hardware for a warm, inviting interior.



Coffee-Glazed
Sierra Maple



Belmont Maple

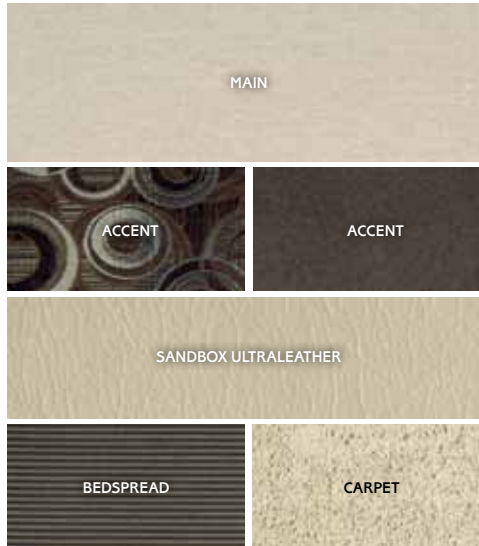


Forest Cherry

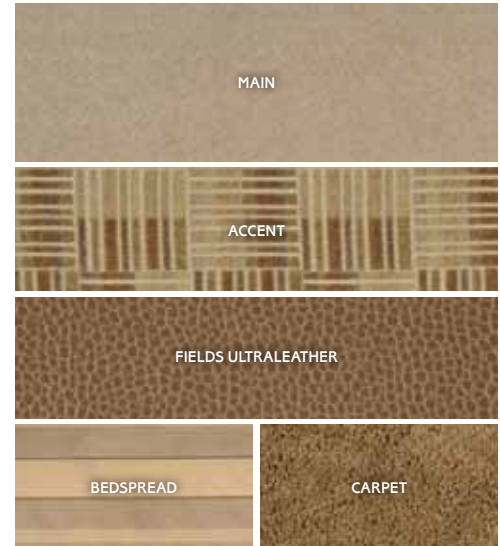
Glacier Mist



Mahogany Nite



Sandscape



Fabrics and carpets may change without notice or obligation.

EXTERIORS

The Impulse comes with standard graphics or available deluxe graphics.
The Impulse Silver comes with deluxe graphics or available full-body paint.

Impulse Standard Graphics



Wine
{ STANDARD GRAPHICS }



Olympic Gold
{ STANDARD GRAPHICS }

Impulse/Impulse Silver Deluxe Graphics



Blackmist
{ DELUXE GRAPHICS }



Vintage Red
{ DELUXE GRAPHICS }



Dark Bronzemist
{ DELUXE GRAPHICS }

Impulse Silver Full-Body Paint



Toreador Red
{ FULL-BODY PAINT }



Sandstone
{ FULL-BODY PAINT }



Silver
{ FULL-BODY PAINT }



Foothills
{ FULL-BODY PAINT }

BE PART OF SOMETHING SPECIAL



Itasca owners simply have more fun. When you buy an Impulse or Impulse Silver, you can become a part of the Winnebago-Itasca Travelers Club. As a member, you'll meet other motor home enthusiasts, travel to interesting places with interesting people, and be the first to learn about new Itasca products. See what the WIT Club is all about at WITclub.com.

Members enjoy:

- Caravans and Rallies
- Local and State Group Activities
- RV Travel Benefits

COMMITTED TO SERVICE

We back our motor homes with best-in-class support both before and after the sale:



- 12-month/15,000-mile basic limited warranty
- 36-month/36,000-mile limited warranty on structure
- 10-year standard limited parts-and-labor roof skin warranty

- Complimentary 24-hour roadside assistance program

- RV Technical Assistance Hotline
- RV Service Appointment Assistance
- Emergency Trip Interruption
- Emergency Message Service
- Nationwide Trip Routing
- Fee-Free Travelers Cheques



TRIPSaver
FAST TRACK PARTS

- TripSaver Fast Track Parts guarantees that in-stock warranty parts ship directly to your dealer within 24 hours
- National dealer service network



Goltasca.com Visit us on the web for more information on all of our motor homes and the latest product updates. Plus, watch videos and see other web-exclusive content in our expanded key features section.



THE MOST RECOGNIZED
NAME IN MOTOR HOMES™

Goltasca.com
NYSE: WGO

For Sales and Service Information Contact:

Seat belts are your most important hookup. Always buckle up.

©2010 Winnebago Industries, Inc.
Printed in USA