

2011  
SUNOVA





 SMARTSPACE

## TAKE THE NEXT STEP

The Itasca Sunova® has long been the ideal coach for those looking to step up to the Class A lifestyle, and this year's lineup delivers like never before. The 36V is all new, offering unique features such as the exclusive sectional sofa that expands to seat six. Upscale features

have been added to all models, including available MCD American Duo® solar/blackout roller shades and luxurious UltraLeather™ cab seats. Make the move to Class A comfort in your very own 2011 Itasca Sunova.



## DESIGNED FOR ENTHUSIASTS

Owners love their Itasca motor homes, and with good reason. The Recreation Vehicle Dealer Association annually bestows the Quality Circle Award to manufacturers that provide exceptional

products, service and support. Only one manufacturer has received this award for fourteen consecutive years: Winnebago Industries®, proud manufacturer of the Itasca Sunova.





## THE FUN STARTS HERE

An impressive 40" LCD TV is the centerpiece of your entertainment center in the Sunova (32" LCD TV, 33C). The all-new 36V floorplan puts you in perfect position to watch movies with the family on the extendable sectional sofa. You can also add a 32" LCD TV over the cab on most models. Select your level of privacy with MCD American Solo® blackout shades in the lounge, dinette and bedroom and an available Duo solar/blackout screen over the windshield. Duo solar/blackout roller shades are also available throughout the coach.

The kitchen makes it easy to prepare a feast for you and all of your friends.

Choose the standard microwave oven or the available microwave/convection oven. The three-burner range includes a large drawer below for storing pots and pans, or choose the available oven. You also have abundant workspace aided by sink covers and complemented by a decorative backsplash.

Savor the meal you just prepared as you sit at the BenchMark® full-comfort dinette. This versatile dining area quickly converts into a comfortable bed at night and features innerspring seat cushions that flip up to reveal large storage spaces. The 33C gives you the option to replace the dinette with a dining table and buffet that houses a 40" LCD TV.



### Interior and Kitchen Amenities:

- 40" LCD TV (32" on 33C)
- UltraLeather Cab Seats
- Available Microwave/Convection Oven
- Available Duo Solar/Blackout Roller Shades
- BenchMark Full-Comfort Dinette (NA 37L)



### Comfort Sofa Sleeper

**This 2-in-1 sofa redefines comfort and convenience (NA 36V).**

- 1) By day it's a plush sofa.
- 2) A hidden drawer stores bed linens.
- 3) It converts easily into a bed.
- 4) The mattress inflates and deflates with an automatic pump.





## SLEEP SANCTUARY

Get a good night's sleep in the standard queen bed. A king bed comes standard on the 35J and 37L and is available on the 33C and 36V. Underbed storage compartments are found in most models.

Younger travelers will love the bunk beds in the 35J. A DVD player/monitor can be added to each

bunk for extra fun on the road. The large wardrobe in the bedroom of every Sunova provides plentiful storage and is enhanced with a chest of drawers in most models. An LCD TV can be added, which includes connection points built into the wall for a DVD player.

The OnePlace® systems center lets you monitor

and control key systems from a central location. This includes the TrueLevel™ tank monitoring system that uses sonar technology to precisely measure liquid levels without probes that clog or corrode. You'll enjoy accurate readings time after time.



### Bedroom Amenities:

- King Bed (Standard 35J, 37L, Optional 33C, 36V)
- Bunk Beds (35J)
- Available LCD TV
- Large Bath

### Exterior Features:

- Available Entertainment Center w/32" LCD TV (33C, 35J, 36V)
- Service Center w/Color-Coded Labels
- Available Sideview Color Cameras
- OnePlace System Center



QuickPort





# No Shortcuts – No Compromises

You can compare features. You can compare styles. But when it comes to quality construction, there is no comparison. Only motor homes manufactured by Winnebago Industries harness the legendary strength and durability of our SuperStructure® construction process—a process we've been perfecting for more than 50 years.

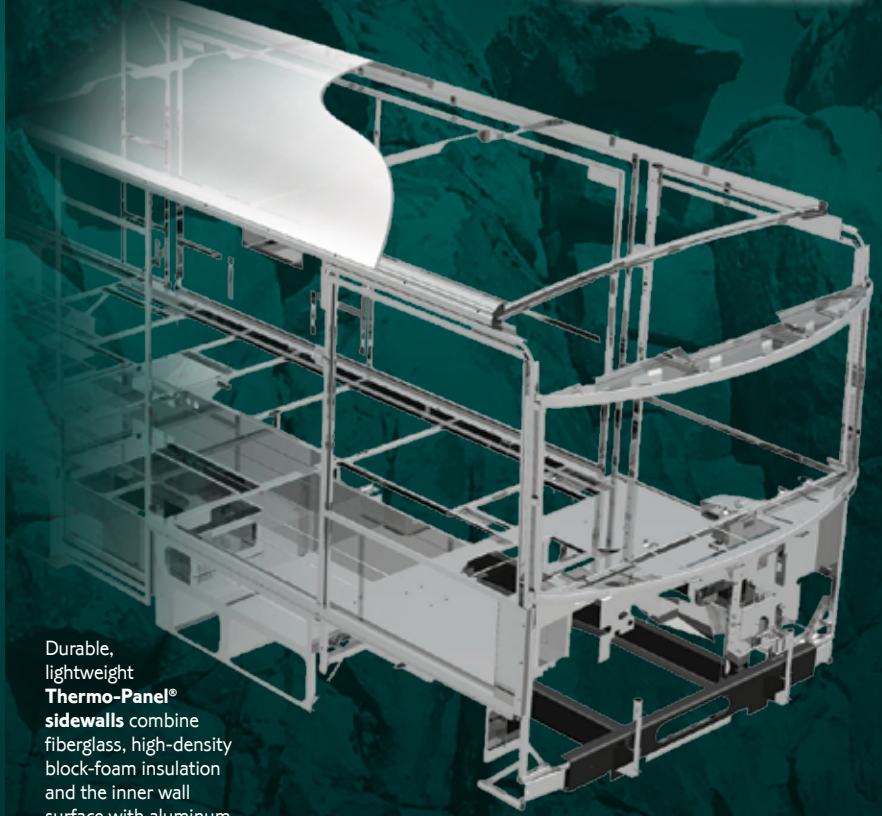
SuperStructure means a solid framework, steel and aluminum substructures and components built in-house to our exacting standards. It means managing each detail to ensure the integrity and quality of every coach. It means barcoding parts to save time during service and running every coach through a gauntlet of tests, including a high-pressure water test, before it leaves the factory.

Where other manufacturers cut corners, SuperStructure ensures the features you can't see are treated with the same care as the ones you can. When you buy an Itasca motor home, you are getting a coach that is built for you—and built to last.



The crowned, one-piece fiberglass roof is backed by a 10-year limited parts-and-labor roof skin warranty. Fiberglass offers superior strength and durability over less attractive rubber roofs found on so many competitive models that can streak and degrade over time.

## SUPER STRUCTURE



Durable, lightweight **Thermo-Panel®** sidewalls combine fiberglass, high-density block-foam insulation and the inner wall surface with aluminum support structures.

**Metal substructures** secure cabinets and appliances to add safety and stability.

An **electrodeposition coating** helps protect critical steel components.



Specially engineered **interlocking joints** connect the floor, sidewalls and roof into a cohesive unit.



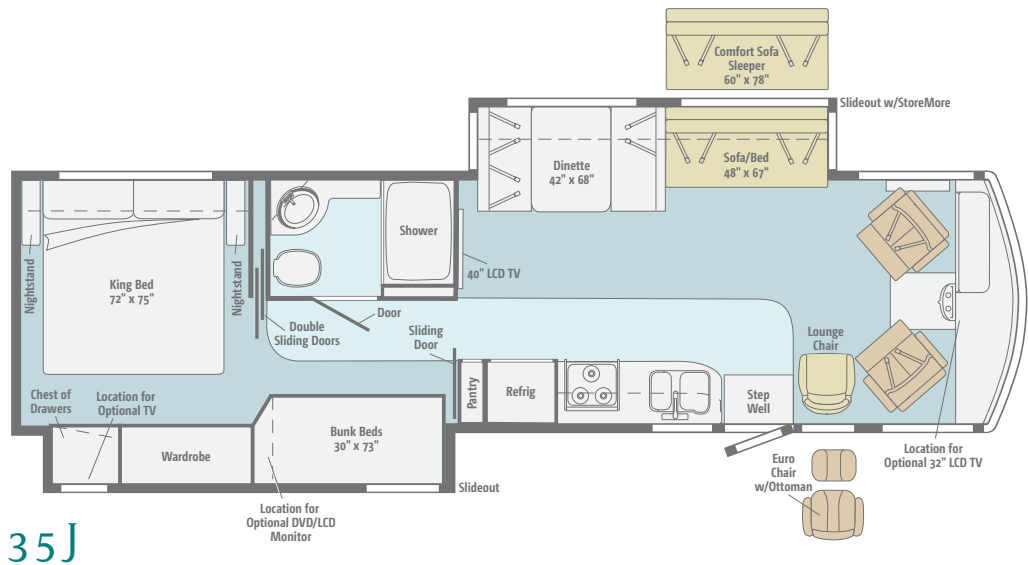
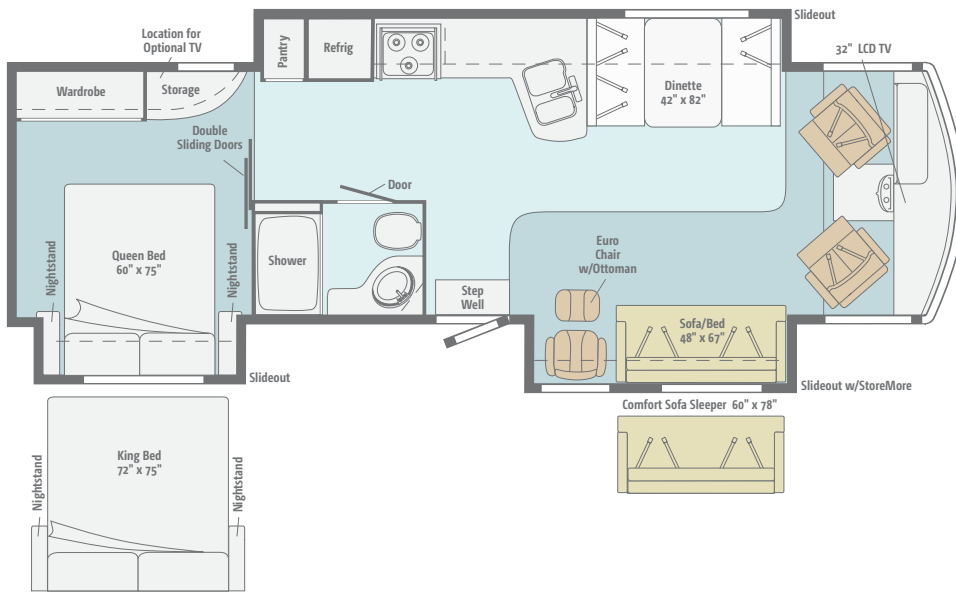
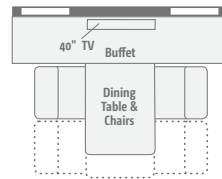
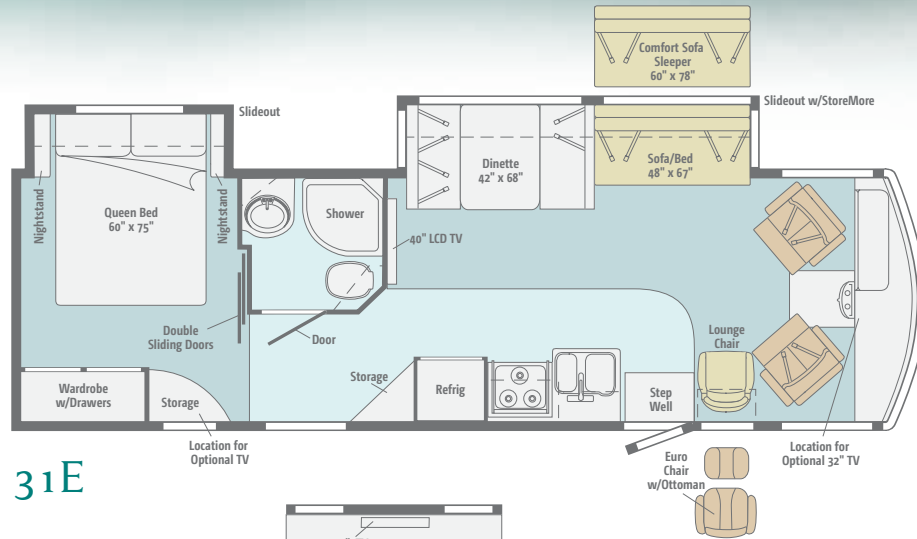
## TAKE A TOUR

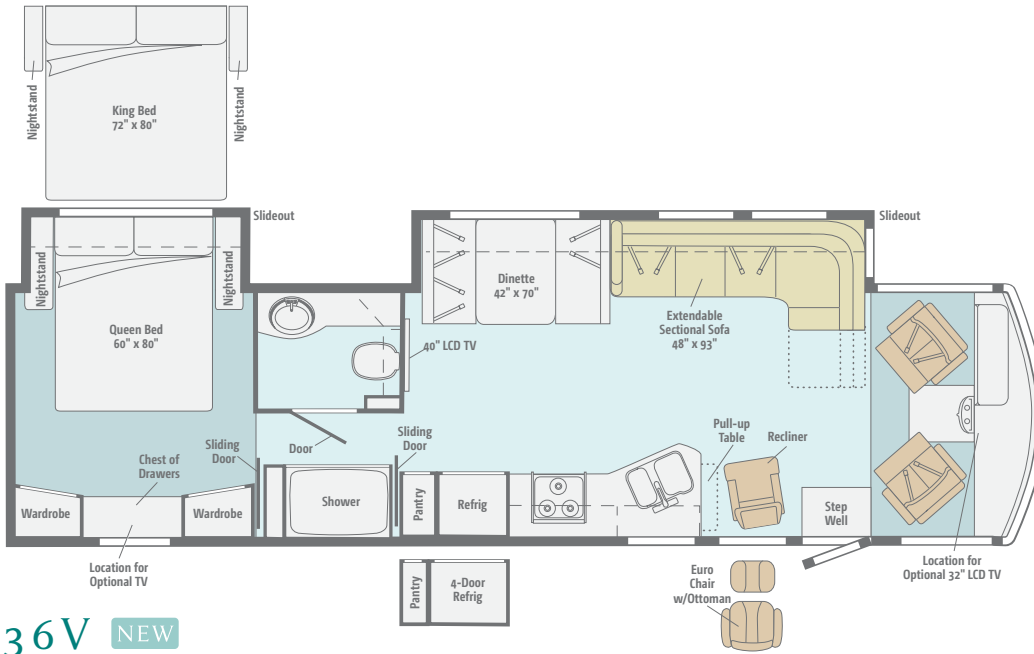
We're proud of our processes, state-of-the-art facilities and the people who make Winnebago Industries number one. We invite you to visit our complex in Forest City, Iowa, for a first-hand look at the dedication and technology behind every motor home we build.

Visit us for the latest updates and expanded key feature content at: [Goltasca.com](http://Goltasca.com)

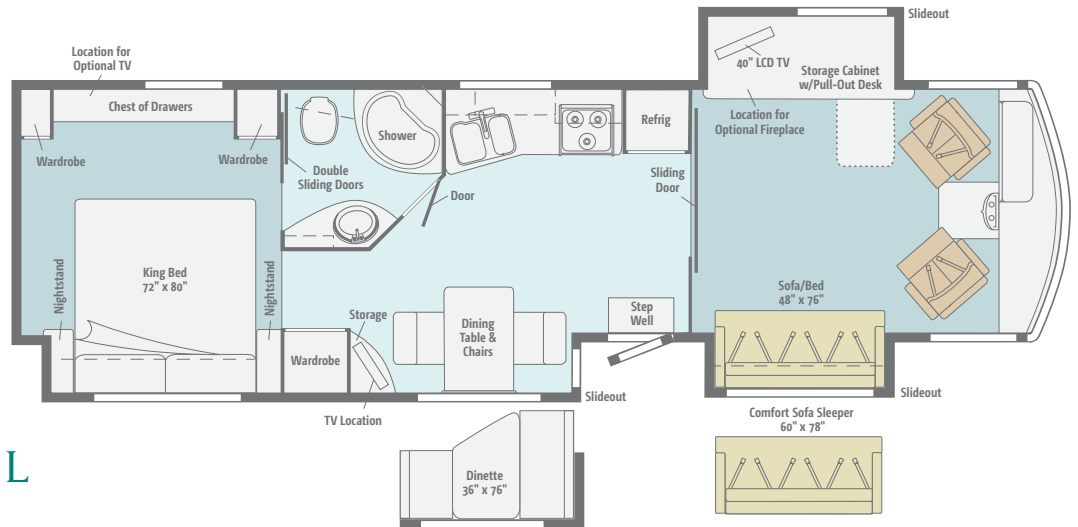
# FLOORPLANS & SPECIFICATIONS

Dimensions shown are for sleeping space only and may vary due to styling differences. Dashed lines denote overhead storage areas. Floorplans and specifications are also available online at [Goltasca.com](http://Goltasca.com).





**36V** NEW



**37L**

### Weights & Measures

	31E	33C	35J	36V <b>NEW</b>	37L
Length	32'7"	34'3"	35'6"	37'5"	38'3"
Exterior Height <sup>1</sup>	12'4" <sup>A</sup>	12'4" <sup>A</sup>	12'3" <sup>A</sup> /12'6" <sup>B</sup>	12'6" <sup>B</sup>	12'6" <sup>B</sup>
Exterior Width <sup>2</sup>	8'5.5"	8'5.5"	8'5.5"	8'5.5"	8'5.5"
Exterior Storage <sup>3</sup> (cu. ft.)	94.5	95	117.8	160	107.7
Awning Length - Front/Rear	18'	19'	14'	20'	11'6"/17'
Interior Height	6'8"	6'8"	6'8"	6'8"	6'8"
Interior Width	8'0.5"	8'0.5"	8'0.5"	8'0.5"	8'0.5"
Freshwater Capacity w/Heater <sup>4</sup> (gal.)	84	86	75	94	94
Holding Tank Capacity - Black/Gray <sup>4</sup> (gal.)	38/44	39/59	44/48	39/44	50/44
LP Capacity <sup>5</sup> (gal.)	18	18	18	18	18
Fuel Capacity (gal.)	80	80	80	80	80
GCWR <sup>6</sup> (lbs.)	26,000	26,000	26,000	26,000	26,000
GVWR (lbs.)	22,000	22,000	22,000	22,000	22,000
GAWR - Front (lbs.)	8,000	8,000	8,000	8,000	8,000
GAWR - Rear (lbs.)	15,000	15,000	15,000	15,000	15,000
Wheelbase	208"	220"	228"	242"	248"

<sup>A</sup> Ford® F53 Chassis w/19.5" Tires

<sup>B</sup> Ford F53 Chassis w/22.5" Tires



## Ford® F53 Chassis

362-hp 6.8L Super Duty V10 SEFI Triton® engine

TorqShift™ 5-speed automatic transmission w/tow haul

Hydro-Max™ brakes

4-wheel ABS

175-amp. alternator

7-pin trailer wiring

Trailer Hitch®: 5,000-lb. drawbar/500-lb. maximum vertical tongue weight

19.5" tires and stainless steel wheel liners (31E, 33C, 35J)

22.5" tires and stylized aluminum wheels (36V, 37L)

HWH® automatic hydraulic leveling jacks w/3-position controls

### Optional Equipment

22.5" tires and stylized aluminum wheels (35J)

## Cab Conveniences

**Cab Seats:** armrests, lumbar support and multi-adjustable slide/recline/swivel

**Stereo System:** AM/FM, CD/DVD, alarm clock, front input jack and remote

**Chassis/house battery radio power switch**

**Convenience tray w/cup holders**

**Power assist steering w/tilt wheel**

**12-volt powerpoint**

**Cruise control**

**Power mirrors w/defrost**

**Map lights**

**Sunvisors**

**C.B. wire prep**

**Cab wraparound curtain**

**Rearview color monitor system w/one-way audio**

### Optional Equipment

Sideview color camera monitor system

Defroster fans

MCD American Duo® powered front shade w/solar and blackout shades, privacy curtains for driver and passenger windows

6-way power driver seat

## Interior

19" LCD TV (37L dining area)

32" LCD TV (33C)

40" LCD TV (31E, 35J, 36V, 37L)

Amplified digital TV antenna

Satellite system ready

Soft vinyl ceiling

MCD American Solo® blackout roller shades (lounge, dinette and bedroom)

Mini blinds (kitchen 35J, 36V, 37L)

OnePlace® systems center

DC receptacle (dining area)

Tinted windows

Roof vent (lounge)

Powered roof vent (bath)

Key-activated slideroom master lock switch

### Optional Equipment

26" LCD TV (37L dining area)

32" LCD TV (31E, 35J, 36V)

40" LCD TV w/dining table/buffet (33C)

MCD American Duo solar/blackout roller shades (lounge, dinette and bedroom)

Tinted, dual-glazed, thermo-insulated windows

Vinyl floor covering (front to bedroom; cab area and slideouts carpeted)

Satellite dish antenna w/remote extender

Powered ventilator fan (lounge)

Fireplace (37L)

## Kitchen

Thermo-formed laminated countertops

Backsplash

Flip-up countertop extension (31E, 35J)

Range and sink covers

2-door refrigerator/freezer

Microwave oven (31E)

Vented range hood (31E)

Microwave oven w/vented range fan (33C, 35J, 36V, 37L)

3-burner range top w/storage below

### Optional Equipment

Microwave/convection oven (31E)

Microwave/convection oven w/vented range fan (33C, 35J, 36V, 37L)

Large capacity 2-door refrigerator/freezer w/ice maker and water filter (NA 36V)

4-door refrigerator/freezer w/icemaker (36V)

3-burner range w/oven

## Bath

Thermo-formed laminated countertop

Flexible showerhead

Textured glass shower door

Skylight

## Bedroom

Innerspring mattress

Bedsread, pillows and shams

Bunk beds w/foam mattresses, mattress covers, pillows w/shams and privacy curtains (35J)

### Optional Equipment

2 DVD players w/headphones, 8.5" LCD monitors (bunk area 35J)

19" LCD TV, cable ready for a DVD player (31E, 33C, 35J, 37L)

26" LCD TV, cable ready for a DVD player (36V)

## Exterior

Automatic entrance door steps

Porch light

Lighted storage compartments

Main entrance w/screen door

Premium smooth high-gloss skin

KeyOne™ lock system

Front mud flaps

Ladder

### Optional Equipment

Powered patio awning w/metal wrap and Weather Max fabric (31E, 35J, 36V w/full-body paint, 33C, 37L w/deluxe graphics or full-body paint)

Second powered patio awning w/metal wrap and Weather Max fabric (37L w/deluxe graphics or full-body paint)

Powered vinyl awning w/vinyl wrap (w/deluxe graphics 31E, 35J, 36V)

**Entertainment Center:** AM/FM radio w/CD player, removable TV table (NA 37L), AC/DC receptacle, speakers, lockable compartment (31E, 37L)

**Entertainment Center:** 32" LCD TV, AM/FM stereo, CD/DVD player, remote, speakers, radio antenna (33C, 35J, 36V - NA 35J w/range/oven option)

Lower front protective mask (w/full-body paint)

## Heating & Cooling System

Two high-efficiency roof air conditioners w/energy management system

35,000 BTU low-profile furnace (31E, 33C)

40,000 BTU low-profile furnace (35J, 36V, 37L)

### Optional Equipment

Two high-efficiency air conditioners w/heat pumps

## Electrical System w/QuickPort®

AC/DC electrical distribution system, 55-amp. converter/charger

50-amp. power cord

5,500-watt Cummins Onan®

Marquis Gold™ gas generator

Generator/shoreline automatic changeover switch

2 deep-cycle, Group 31 batteries

Chassis and coach battery disconnect systems

PowerLine® energy management system

Automatic dual-battery charge control

Auxiliary start circuit

### Optional Equipment

1,000-watt inverter

## Plumbing System w/QuickPort

**Service Center:** color labels, cable TV input, pressurized city water hook-up w/diverter valve, 3" drainage valve, portable satellite dish hook-up, power cord, 10' sewer hose, QuickPort, exterior wash station w/lighted pump switch

**Permanent-mount LP tank**

**On-demand water pump**

**TrueLevel™ holding-tank monitoring system**

**Winterization Package:** water heater bypass valve and siphon tube

**Heated holding-tank compartment**

**6-gallon 110 V/LP water heater w/motoraid/auto heater**

## Safety

Seat belts

Child seat tether anchor in forward-facing dinette seat (31E, 35J, 36V)

LP, smoke and carbon monoxide detectors

10 BC fire extinguisher

Ground fault interrupter

High-mount brake lamp

## Warranty<sup>7</sup>

12-month/15,000-mile basic warranty,<sup>3</sup> 36-month/36,000-mile limited warranty on structure,<sup>8</sup> 10-year limited parts-and labor warranty on roof skin<sup>8</sup>

1 The height of each model is measured to the top of the tallest standard feature and is based on the curb weight of a typically equipped unit. The actual height of your vehicle may vary by several inches depending on chassis or equipment variations. Please contact your dealer for further information.

2 Sunova floorplans feature a wide-body design – over 96". In making your purchase decision, you should be aware that some states restrict access on some or all state roads to 96" in body width. Before making your purchase decision, you should confirm the road usage laws in the states of interest to you.

3 The load capacity of your motor home is designated by weight, not by volume, so you cannot necessarily use all available space when loading your motor home.

4 Capacities are based on measurements prior to tank installation. Slight capacity variations can result due to installation applications.

5 Capacities shown are tank manufacturer's listed water capacity (W.C.). Actual filled LP capacity is 80% of listing due to overfilling prevention device on tank.

6 Actual towing capacity is dependent on your particular loading and towing circumstances which includes the GVWR, GAWR, and GCWR, as well as adequate trailer brakes. Please refer to the Operator's Manual of your vehicle for further towing information.

7 See separate chassis warranty.

8 See your dealer for complete warranty information.

NA Not Available

Not all items available in combination. See dealer for details.

Winnabago Industries® continuing program of product improvement makes specifications, equipment, model availability, and prices subject to change without notice. Comparisons to other motor homes are based on the most recent information available at printing.



# DÉCOR AND EXTERIORS

## INTERIOR DÉCOR

Choose from three fabric collections. Upgrade to UltraLeather™ furniture for luxurious comfort that is both durable and easy to clean. Cabinetry comes in your choice of Honey Cherry, Belmont Maple, Forest Cherry or Coffee-Glazed Sierra Maple finish with satin nickel hardware for a warm, inviting interior.



Honey Cherry



Belmont Maple



Forest Cherry



Coffee-Glazed  
Sierra Maple

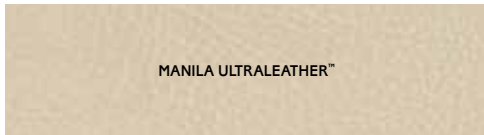
### Tea Leaf



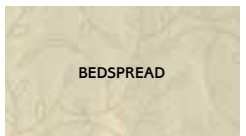
MAIN



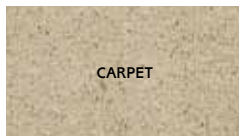
ACCENT



MANILA ULTRALEATHER™



BEDSPREAD



CARPET

### Baritone



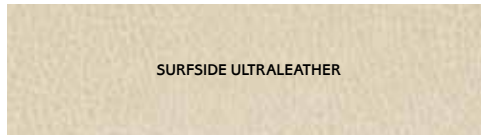
MAIN



ACCENT



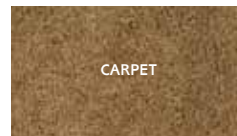
ACCENT



SURFSIDE ULTRALEATHER



BEDSPREAD



CARPET

### Plateau



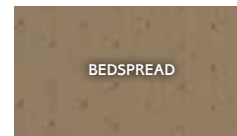
MAIN



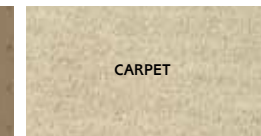
ACCENT



PUTTY ULTRALEATHER



BEDSPREAD



CARPET

*Fabrics and carpets may change without notice or obligation.*

## EXTERIORS

The Sunova comes with deluxe graphics or choose one of the four full-body paint designs.



*Espresso*  
{ DELUXE GRAPHICS }



*Granite Silver*  
{ DELUXE GRAPHICS }



*Mojave Desert Sand*  
{ FULL-BODY PAINT }



*Pearl*  
{ FULL-BODY PAINT }



*Wine*  
{ FULL-BODY PAINT }



*Magnesium*  
{ FULL-BODY PAINT }

# BE PART OF SOMETHING SPECIAL



Itasca owners simply have more fun. When you buy a Sunova, you can become a part of the Winnebago-Itasca Travelers Club. As a member, you'll meet other motor home enthusiasts, travel to interesting places with interesting people, and be the first to learn about new Itasca products. See what the WIT Club is all about at [WITclub.com](http://WITclub.com).

Members enjoy:

- Caravans and Rallies
- Local and State Group Activities
- RV Travel Benefits

## COMMITTED TO SERVICE

We back our motor homes with best-in-class support both before and after the sale:



- 12-month/15,000-mile basic limited warranty
- 36-month/36,000-mile limited warranty on structure
- 10-year standard limited parts-and-labor roof skin warranty

- Complimentary 24-hour roadside assistance program

- RV Technical Assistance Hotline
- RV Service Appointment Assistance
- Emergency Trip Interruption
- Emergency Message Service
- Nationwide Trip Routing
- Fee-Free Travelers Cheques



**TRIP**Saver  
FAST TRACK PARTS

- TripSaver Fast Track Parts guarantees that in-stock warranty parts ship directly to your dealer within 24 hours
- National dealer service network



**Goltasca.com** Visit us on the web for more information on all of our motor homes and the latest product updates. Plus, watch videos and see other web-exclusive content in our expanded key features section.



THE MOST RECOGNIZED  
NAME IN MOTOR HOMES™

[Goltasca.com](http://Goltasca.com)  
NYSE: WGO

For Sales and Service Information Contact:

Seat belts are your most important hookup. Always buckle up.

©2010 Winnebago Industries, Inc.  
Printed in USA