

2011
SUNCRUISER



 ITASCA

On the cover: 37F Dark Caramel



THE PEOPLE'S CHOICE

Vacations are made for fun and relaxation, and nothing lives up to that ideal like the 2011 Itasca Suncruiser.® Packed with luxury features and SmartSpace™ amenities, special care was taken during all aspects of the design process to make life on the road more

enjoyable. Each model incorporates a full-wall slide for maximum living space, including the 37F with a half-bath mid-coach and a private full bath in the rear. The life you've always wanted and the freedom to travel is here in the user-friendly Itasca Suncruiser.



DESIGNED FOR ENTHUSIASTS

Owners love their Itasca motor homes, and with good reason. The Recreation Vehicle Dealer Association annually bestows the Quality Circle Award to manufacturers that provide exceptional products,

service and support. Only one manufacturer has received this award for fourteen consecutive years: Winnebago Industries®, proud manufacturer of the Itasca Suncruiser.



OPEN THINGS UP

The full-wall slideout opens up a world of spaciousness and entertainment possibilities, starting with a large LCD TV that comes standard on every model. The 37F offers a second, retractable 40" LCD TV when you choose the dining table with buffet option. The DVD player and home theater sound system bring the TV to life, while a King-Dome® in-motion satellite dish with the Your HD compatible receiver is available for even more programming options. Your HD allows you to turn DISH Network® programming on and off as you desire to fit your travel plans. Use the available 1,000-watt inverter to power your entertainment components when shoreline or generator power is not available.

Enjoy personalized comfort on the Rest Easy® multiposition lounge with dual controls for gliding from couch to recliner to comfortable bed. Tinted, dual-glazed, thermo-insulated windows provide optimal thermal efficiency while the standard MCD American Solo® blackout shades or available MCD American Duo® solar/blackout roller shades maintain your privacy. Choose between the standard carpeted lounge or available vinyl tile throughout the lounge and dining area.



Interior Amenities:

- Large LCD TV
- Video Selection System
- Rest Easy (Standard 35P, 37F, Optional 32H)
- Dual-Glazed, Thermo-Insulated Windows
- Available MCD American Duo Roller Shades



Kitchen Amenities:

- Corian® Solid-Surface Countertops
- Stainless Steel Microwave/Convection Oven
- Filtered Cold Water Faucet
- BenchMark Dinette (Standard 35P, 37F, Optional 32H)

DONE JUST RIGHT

You can look forward to a great meal prepared in the SunCruiser's full-featured kitchen. Corian® solid-surface countertops with matching sink and range covers provide a large prep space. The stainless steel microwave/convection oven and three-burner range with available oven handle the cooking. Expand your cold storage by upgrading to the four-door refrigerator/freezer with icemaker.

Enjoy the meal you just prepared in the BenchMark® full-comfort dinette. It features innerspring seat construction for residential-style comfort and easy-to-access storage beneath the seats. The Dream Dinette™ table adjusts easily with one hand. Best of all, the dinette quickly converts to a comfortable sleeping space. To make room for dinner guests in the 35P and 37F, choose the extendable dinette table. It comes with a leaf and two folding chairs to fit up to six people.

WIND DOWN

The combination of full-wall and rear bedroom slide-outs creates an amazingly large master bedroom with plenty of room for an available power-adjustable king bed in the 37F. The Ideal Rest® digital comfort control mattress features twin air chambers with separate controls for individual sleeping comfort. The 37F

also provides exclusive access to a private full-bath. There is plenty of storage in every coach, including a large wardrobe and a chest of drawers. Relax while watching the LCD TV or listening to the available stereo system with CD/DVD player, iPod/MP3 input and built-in alarm clock.

Bedroom Amenities:

- Power Bed w/Ideal Rest Digital Comfort Control Mattress (37F)
- Available Ideal Rest Digital Comfort Control Mattress (32H, 35P)
- LCD TV (32H, 37F, available 35P)
- Available Stereo System
- Available Stackable Washer/Dryer (NA 32H)





THE ROAD AWAITS

The SunCruiser is as easy to drive as it is to enjoy with controls close at hand. The rearview monitor and the available sideview color video camera system activate with the turn signal to provide added confidence when backing or maneuvering. The RV Radio® features an in-dash 6.5" LCD color touch screen that acts as both the rearview monitor and the controls for the radio which includes a CD player, iPod/MP3 input and weatherband. The Sirius® Plug-N-Play satellite radio system is also available, which includes a second

docking port for your car, an iPod interface connection and a complimentary six-month subscription.

UltraLeather™ cab seats wrap you in comfort and the six-way power pedestal for the driver's seat adjusts to your ideal driving position. MCD American Duo solar/blackout roller shades come in handy when you reach your destination.



Cab Features:

- 6.5" RV Radio/Rearview Monitor Touch Screen
- 6-way Power Driver Seat
- Available Sirius Satellite Radio
- Dash Workstation

NO WORRIES

The user-friendly nature of the Suncruiser is prevalent outside the coach in the exterior service center that employs color-coded labels to make hookups quick and easy. It boasts the QuickPort® service connection hatch that allows the bay door to close with hoses still connected. For outdoor fun, the available exterior entertainment center includes a 32" LCD TV, AM/FM stereo and CD/DVD

player with remote. Portable power is provided by a Cummins Onan® generator, which is available with the automatic generator start system. This system turns on the generator based on indoor temperature, battery voltage or a programmable time so you know your air conditioner will be running when you need it most.

The OnePlace® systems center lets you monitor and control key systems from one convenient location:

- **TRUEAIR** Maximum Comfort air conditioning provides even cooling throughout the coach.
- **TRUELEVEL** tank monitors use sonar technology to accurately measure tank levels. Without probes that corrode or clog, you'll enjoy accurate readings time after time.
- The **POWERLINE** energy management system monitors electrical usage and automatically cycles appliances on and off to help prevent tripped campground circuit breakers.



No Shortcuts – No Compromises

You can compare features. You can compare styles. But when it comes to quality construction, there is no comparison. Only motor homes manufactured by Winnebago Industries harness the legendary strength and durability of our SuperStructure® construction process—a process we've been perfecting for more than 50 years.

SuperStructure means a solid framework, steel and aluminum substructures and components built in-house to our exacting standards. It means managing each detail to ensure the integrity and quality of every coach. It means barcoding parts to save time and frustration during service and running every coach through a high-pressure leak test before it leaves the factory.

Where other manufacturers cut corners, SuperStructure ensures the features you can't see are treated with the same care as the ones you can. When you buy an Itasca motor home, you are getting a coach that is built for you—and built to last.



The crowned, one-piece **fiberglass roof** is backed by a 10-year limited parts-and-labor roof skin warranty. Fiberglass offers superior strength and durability over less attractive rubber roofs found on so many competitive models that can streak and degrade over time.

SUPER STRUCTURE

Durable, lightweight **Thermo-Panel®** sidewalls combine fiberglass, high-density block-foam insulation and the inner wall surface with aluminum support structures.

Metal substructures secure cabinets and appliances to add safety and stability.

An **electrodeposition coating** helps protect critical steel components.



Specially engineered **interlocking joints** connect the floor, sidewalls and roof into a cohesive unit.



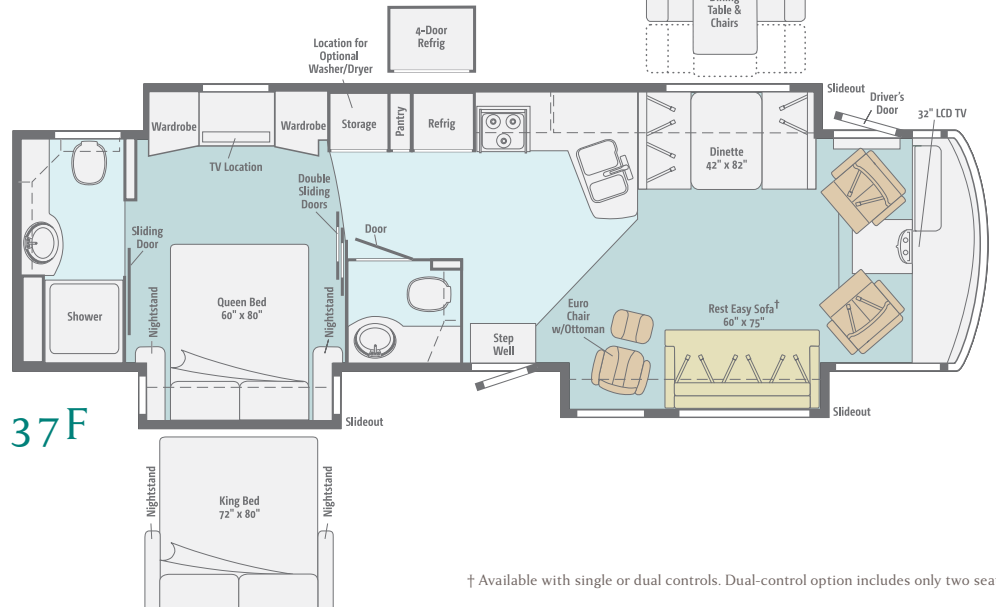
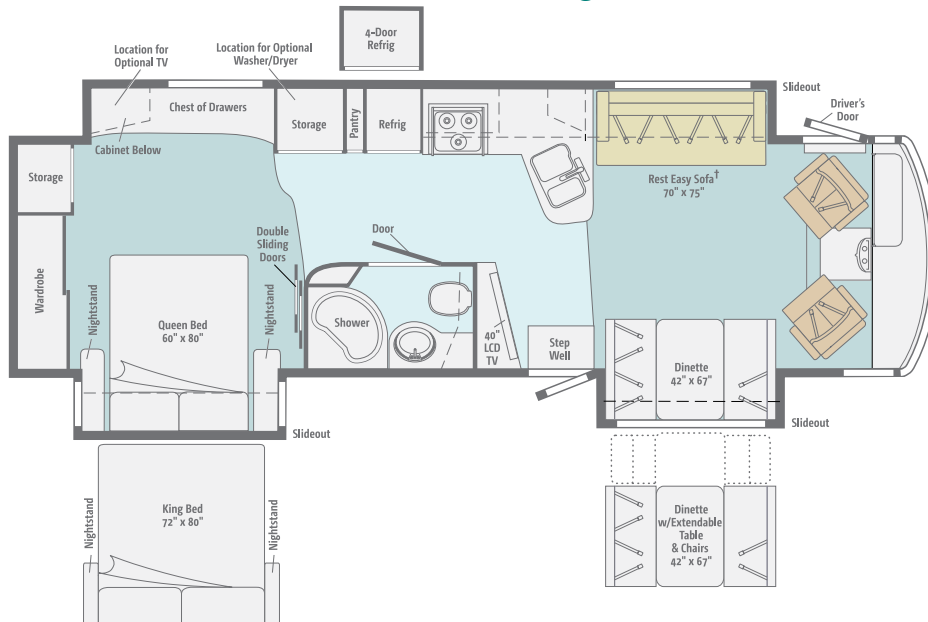
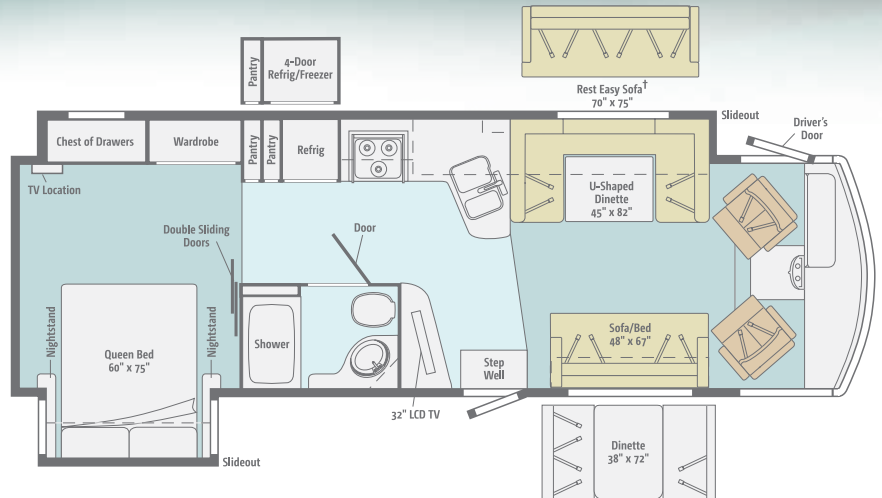
TAKE A TOUR

We're proud of our processes, state-of-the-art facilities and the people who make Winnebago Industries number one. We invite you to visit our complex in Forest City, Iowa, for a first-hand look at the dedication and technology behind every motor home we build.

Visit us for the latest updates and expanded key feature content at: Goltasca.com

FLOORPLANS & SPECIFICATIONS

Dimensions shown are for sleeping space only and may vary due to styling differences. Dashed lines denote overhead storage areas. Floorplans and specifications are also available online at Goltasca.com.



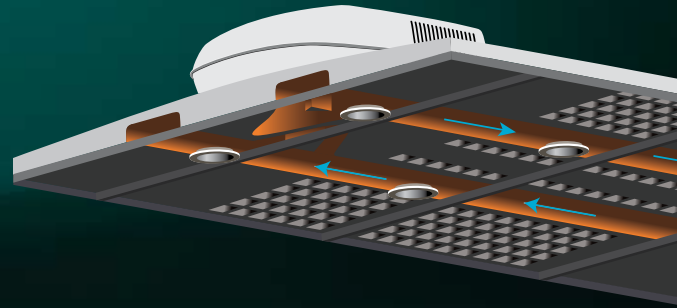
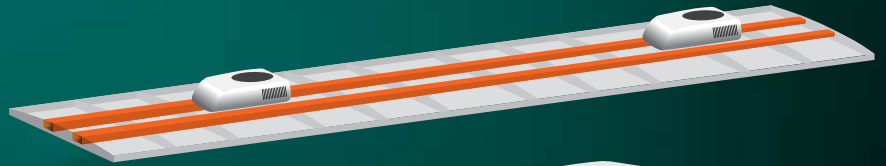
† Available with single or dual controls. Dual-control option includes only two seat belts.

SET YOUR COORDINATES TO MAXIMUM COMFORT



For years, TrueAir set the standard in RV air conditioning. This year, we're raising the bar with the TrueAir Maximum Comfort A/C. It's the best TrueAir system yet, employing next-generation technology to provide unparalleled climate control and comfort:

- Two high-efficiency, low-profile roof-mount cooling units deliver unsurpassed cooling power
- D-shaped formed ductwork optimizes airflow
- Dual-zone thermostat offers precision cooling
- Infinitely adjustable ceiling vents provide finite control



For complete details on the new TrueAir Maximum Comfort A/C, visit the key features section at Goltasca.com.

Weights & Measures

	32H	35P	37F
Length	32'10"	35'4"	37'4"
Exterior Height ¹	12'9"	12'9"	12'9"
Exterior Width ²	8'5.5"	8'5.5"	8'5.5"
Exterior Storage ³ (cu. ft.)	107	105.1	116
Awning Length	17'	17'	18'
Interior Height	7'	7'	7'
Interior Width	8'0.5"	8'0.5"	8'0.5"
Freshwater Capacity w/Heater ⁴ (gal.)	85	85	85
Holding Tank Capacity - Black/Gray ⁴ (gal.)	43/48	43/60	52/71
LP Capacity ⁵ (gal.)	23	28	28
Fuel Capacity (gal.)	80	80	80
GCWR ⁶ (lbs.)	26,000 ^A	26,000 ^A /30,000 ^B	30,000 ^B
GVWR (lbs.)	22,000 ^A	22,000 ^A /24,000 ^B	24,000 ^B
GAWR - Front (lbs.)	8,000 ^A	8,000 ^A /9,000 ^B	9,000 ^B
GAWR - Rear (lbs.)	15,000 ^A	15,000 ^A /15,500 ^B	15,500 ^B
Wheelbase	220"	228"	248"

^A Ford® F53 22,000-lb. Chassis w/22.5" tires ^B Ford F53 24,000-lb. Chassis w/22.5" tires

Chassis

Ford® F53 22,000-lb. Chassis
(32H, 35P)

- 362-hp 6.8L V10 SEFI Triton® engine
- TorqShift™ 5-speed automatic overdrive transmission w/tow haul
- Hydro-Max™ brakes w/ABS
- 175-amp. alternator

Ford F53 24,000-lb. Chassis (37F)

Trailer Hitch⁶: 5,000-lb. drawbar/500-lb. maximum vertical tongue weight w/7-pin connector

Stylized aluminum wheels

HWH® hydraulic leveling jacks

Optional Equipment

Ford F53 24,000-lb. Chassis (35P)

Cab Conveniences

RV Radio®/Rearview Monitor

System: 6.5" LCD color touch screen, CD player, weather band, remote, iPod/MP3 input, rear color camera

Chassis/house battery radio power switch

Cab Seats: adjustable armrests, lumbar support, multi-adjustable recline and swivel/slide

6-way power-assist driver seat

Defroster fans

Cab sound control package

Convenience tray

Cruise control

12-volt powerpoints

Map lights

Power steering w/tilt wheel

Dash workstation

C.B. radio prep kit

Power mirrors w/defrost

MCD American Duo® powered front shade w/solar and blackout shades, privacy curtain for driver and passenger

Optional Equipment

Sirius® Plug-N-Play satellite radio, 6-month subscription included, iPod interface connector, receiver, 2 docking ports

Sideview color video camera system

Light-filtering roller shades for driver and passenger windows

Passenger seat w/footrest
(35P, 37F)

Interior

40" LCD TV (35P)

32" LCD TV (32H, 37F)

Amplified digital TV antenna

Home Theater Sound System: amplifier, CD/DVD player, receiver, 5 speakers and subwoofer

OnePlace® systems center

Satellite system ready, including bedroom TV

MCD American Solo® blackout roller shades (lounge, dinette and bedroom)

Tinted dual-glazed/thermo-insulated windows

Vinyl ceilings

Key-activated slideroom master lock switch

HD video selection system

Powered ventilator fan (galley)

Powered roof vent (bath)

Optional Equipment

MCD American Duo solar/blackout roller shades (lounge, dinette and bedroom)

Dining table/buffet/chairs w/retractable 40" LCD TV (37F)

RV digital satellite dish

King-Dome® automatic satellite dish

King-Dome HD-ready in-motion satellite dish

Your HD compatible satellite TV receiver

Washer/dryer combination
(35P, 37F)

Stackable washer/dryer (35P, 37F)

Vinyl tile front to bedroom (slideouts, cab and bedroom areas are carpeted)

Kitchen

Corian® solid-surface countertop and backsplash

Sharp® stainless steel microwave/convection oven w/range fan

Amana® 3-burner range top w/storage below

Corian sink and range covers

Norcold® refrigerator/freezer

Filtration system w/separate cold water faucet

Optional Equipment

Amana 3-burner range w/oven

Norcold refrigerator/freezer w/icemaker

Norcold 4-door refrigerator/freezer w/icemaker

Bath

Textured glass shower door

Flexible showerhead

Laminate countertop

Skylight (32H, 35P)

Porcelain toilet

Water pump switch(es)

Bedroom

Powered queen bed w/Ideal Rest® digital comfort control mattress w/remotes (37F)

Queen bed w/innerspring mattress, storage below (32H, 35P)

19" LCD TV (32H)

26" LCD TV (37F)

DVD cable ready for bedroom TV (NA 32H)

Bedsread, pillow shams and pillows

Optional Equipment

King bed w/innerspring mattress and access to storage below (35P)

Queen Ideal Rest digital comfort control mattress w/remotes
(32H, 35P)

King Ideal Rest digital comfort control mattress w/remotes (35P)

Powered king bed w/Ideal Rest digital comfort control mattress w/remotes (37F)

26" LCD TV (35P)

Stereo System: AM/FM, CD/DVD player, alarm clock and iPod/MP3 input

Ceiling fan

Exterior

Driver's side service light

Entrance w/screen door

TriMark® KeyOne™ lock system

Porch light

Electric entrance steps

Ladder

Front and rear mud flaps

Electric patio awning w/wind sensor

Optional Equipment

Lower front protective mask

Exterior Entertainment Center: 32" LCD TV, AM/FM stereo w/CD/DVD player and remotes

Heating & Cooling System

35,000 BTU low-profile furnace
(32H)

40,000 BTU two-speed, low-profile furnace (35P, 37F)

TrueAir® Maximum Comfort A/C two 13,500 BTU, low-profile roof air conditioners w/heat pumps

Electrical System w/QuickPort®

AC/DC distribution system

55-amp. converter/charger

Service Center: cable TV input, 50-amp. power cord, QuickPort hatch, portable satellite dish hookup

5,500-watt Cummins Onan® Marquis Gold™ generator

PowerLine® energy management system

Auxiliary start circuit

Two deep-cycle Group 31 batteries

Battery disconnect systems (coach and chassis)

Automatic dual-battery charge control

Generator/shoreline automatic changeover switch

10-watt solar panel battery charger

Optional Equipment

1,000-watt inverter w/remote panel

Cummins Onan Energy Command™ automatic generator start system

Plumbing System w/QuickPort

Service Center: QuickPort hatch, exterior wash station w/pump switch, pressurized city water hookup w/diverter valve, drainage valves, 10' sewer hose, black tank flushing system

LP Tank, permanent mount w/gauge

TrueLevel™ holding-tank monitoring system

On-demand water pump

Heated holding-tank compartment

Winterization Package: water heater bypass valve and siphon tube

10-gallon water heater, 110 V/LP gas w/motoraid and auxiliary auto heater

Safety

Seat belts

Child seat tether anchor (32H, 35P)

LP, smoke and carbon monoxide detectors

10 BC fire extinguisher

Ground fault interrupter

Fog lamps

High-mount brake lamps

Warranty⁷

12-month/15,000-mile basic warranty⁸; 36-month/36,000-mile limited warranty on structure⁸; 10-year limited parts-and-labor warranty on roof skin⁸

1 The height of each model is measured to the top of the tallest standard feature and is based on the curb weight of a typically equipped unit. The actual height of your vehicle may vary by several inches depending on chassis or equipment variations. Please contact your dealer for further information.

2 Suncruiser floorplans feature a wide-body design – over 96" in making your purchase decision, you should be aware that some states restrict access on some or all state roads to 96" in body width. Before making your purchase decision, you should confirm the road usage laws in the states of interest to you.

3 The load capacity of your motor home is designated by weight, not by volume, so you cannot necessarily use all available space when loading your motor home.

4 Capacities are based on measurements prior to tank installation. Slight capacity variations can result due to installation applications.

5 Capacities shown are tank manufacturer's listed water capacity (W.C.). Actual filled LP capacity is 80% of listing due to overfilling prevention device on tank.

6 Actual towing capacity is dependent on your particular loading and towing circumstances which includes the GVWR, GAWR, and GCWR as well as adequate trailer brakes. Please refer to the Operator's Manual of your vehicle for further towing information.

7 See separate chassis warranty.

8 See your dealer for complete warranty information.

NA Not Available

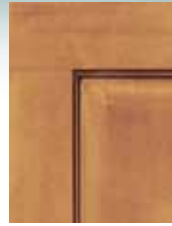
Not all items available in combination. See dealer for details.

Winnebago Industries® continuing program of product improvement makes specifications, equipment, model availability, and prices subject to change without notice. Comparisons to other motor homes are based on the most recent information available at printing.

DÉCOR AND EXTERIORS

INTERIOR DÉCOR

Choose from three fabric collections to tailor the Suncruiser to your style. Select UltraLeather™ furniture for a soft leather feel that is extra durable and easy to clean. Traditional-style cabinetry comes in elegant Coffee-Glazed Sierra Maple, Honey Cherry, Belmont Maple or Forest Cherry finishes, all with satin nickel hardware that creates a warm, inviting interior.



Coffee-Glazed
Sierra Maple



Honey Cherry



Belmont Maple



Forest Cherry

Nightingale



Stoneware



Wynwood



Fabrics and carpets may change without notice or obligation.

EXTERIORS



Iron Gray
{ FULL-BODY PAINT }



Blue Moon
{ FULL-BODY PAINT }



Dark Caramel
{ FULL-BODY PAINT }



Sandrif
{ FULL-BODY PAINT }

BE PART OF SOMETHING SPECIAL



Itasca owners simply have more fun. When you buy a Suncruiser, you can become part of the Winnebago-Itasca Travelers Club. As a member, you'll meet other motor home enthusiasts, travel to interesting places with interesting people, and be the first to learn about new Itasca products. See what the WIT Club is all about at WITclub.com.

Members enjoy:

- Caravans and Rallies
- Local and State Group Activities
- RV Travel Benefits

COMMITTED TO SERVICE

We back our motor homes with best-in-class support both before and after the sale:



- 12-month/15,000-mile basic limited warranty
- 36-month/36,000-mile limited warranty on structure
- 10-year standard limited parts-and-labor roof skin warranty

- Complimentary 24-hour roadside assistance program

- RV Technical Assistance Hotline
- RV Service Appointment Assistance
- Emergency Trip Interruption
- Emergency Message Service
- Nationwide Trip Routing
- Fee-Free Travelers Cheques



- TripSaver Fast Track Parts guarantees that in-stock warranty parts ship directly to your dealer within 24 hours
- National dealer service network



Goltasca.com Visit us on the web for more information on all of our motor homes and the latest product updates. Plus, watch videos and see other web-exclusive content in our expanded key features section.



THE MOST RECOGNIZED
NAME IN MOTOR HOMES™

Goltasca.com
NYSE: WGO

For Sales and Service Information Contact:

Seat belts are your most important hookup. Always buckle up.

©2010 Winnebago Industries, Inc.
Printed in USA