

2011
ELLIPSE



On the cover: 42QD Sandalwood Full-Body Paint



TAKE IT TO THE LIMIT

Itasca Ellipse® owners know the value of a true luxury coach. Only the Ellipse combines the smooth, powerful 400* horsepower diesel performance you demand from the Maxum® Chassis with the uncompromising luxury you have come to expect from Itasca's flagship coach. All new exterior styling takes the 2011 Ellipse to a new

level that is matched only by the awe-inspiring interior features, decor and appointments. Two 40-foot and two 42-foot tag-axle models, including the all new 42QD are available for those that truly want it all. The open road is waiting. Heed the call in your new 2011 Itasca Ellipse.

*running line change fall 2010 - 2010 EPA emissions equipped 450-hp ISL engine, includes adjustable brake and accelerator pedals



DESIGNED FOR ENTHUSIASTS

Owners love their Itasca motor homes, and with good reason. The Recreation Vehicle Dealer Association annually bestows the Quality Circle Award to manufacturers that provide exceptional products,

service and support. Only one manufacturer has received this award for fourteen consecutive years: Winnebago Industries®, proud manufacturer of the Itasca Ellipse.



MORE ROOM FOR AMENITIES

The incredibly spacious interior of the Ellipse is exemplified by full-wall slides in the 40CD and 42QD. Entertainment options abound with a 40" LCD TV, home theater sound system and an available King-Dome® in-motion satellite system. For even more programming flexibility, choose the Your HD compatible satellite receiver (requires the available King-Dome® in-motion satellite system) and you'll have the ability to turn your DISH Network® programming on and off as you desire—an RVer's dream come true.

The exclusive extendable sectional sofa is back for 2011, providing exceptionally comfortable seating for you and your guests in the 40BD, 42OD and 42AD. The 40BD and 40CD also incorporate a RestEasy® sofa into this feature. All of the lounge furniture, including the extendable sectional sofa, is available in soft, yet durable, UltraLeather™.

Relax by the available electric fireplace in the 40BD, 42QD and 42AD or revel in the luxury of the coffee-glazed solid-wood cabinetry and ceramic tile flooring. Superior climate control is provided by the TrueAir® Maximum Comfort air conditioning system with three powerful cooling units and heat pumps. Aqua-Hot® dual zone hydronic heating delivers on-demand continuous hot water, in addition to precise, efficient zone heating.

Interior Amenities:

- 40" LCD TV
- Extendable Sectional Sofa
- Home Theater Sound System
- Solar/Blackout Roller Shades
- Aqua-Hot Hydronic Heating
- TrueAir Maximum Comfort A/C



THE LOOK OF LUXURY

Who knew your dream kitchen would have wheels? The Ellipse kitchen cuts no corners, employing some of the finest features and appliances available. Corian® solid-surface countertops with a backsplash and matching sink covers provide a large, elegant surface for meal preparation. The recessed range top with glass cover and microwave/convection oven or available microwave/speedcook oven let you quickly cook up a feast.

Add even more functionality by upgrading the four-door refrigerator/freezer to the residential stainless steel french door refrigerator. It includes an ice and water dispenser and a large freezer drawer. A drawer-style dishwasher and the central vacuum system with vac pan can also be added, making cleanup completely hassle-free.

The dining table/buffet has a Corian solid-surface top and storage for your finer dinnerware. The table extends to provide additional dining for guests. The BenchMark® dinette is available in the 40BD.

Kitchen Amenities:

- Corian Countertops
- Available Drawer-Style Dishwasher
- Pull-Out Island (42QD)
- Full-Extension Drawer Slides
- Available Stainless Steel Refrigerator/Freezer
- Available Central Vacuum System



42QD





A TRUE SANCTUARY

Here's something you don't find in your run-of-the-mill bedroom: a powered king bed with the precision comfort and firmness adjustability of the Ideal Rest™ Comfort Control mattress. It comes standard on the 40CD, 42QD and 42AD. A powered queen bed with Ideal Rest mattress is available on the 40BD. The ceiling fan helps keep things cool with a gentle breeze whether you are sleeping, watching the LCD

TV or listening to the stereo system with CD/DVD player and built-in alarm clock.

A large cedar-lined wardrobe and a chest of drawers means you are set for extended vacations. You can also add the stackable washer/dryer for laundry on the go. The 40CD and 42QD offer the privacy of a master bath in addition to a half bath mid-coach.

Bedroom Amenities:

- Powered King Bed (40CD, 42QD, 42AD)
- Available Powered Queen Bed (40BD)
- Ceiling Fan
- Stereo System
- Available Stackable Washer/Dryer



READY TO ROLL

The Ellipse cab conforms to perfectly fit you with a tilt/telescoping steering wheel and power cab seats in UltraLeather that adjust in six different directions. You will find it amazingly easy to maneuver the coach using the rearview and sideview cameras that are viewed on the deluxe touch screen radio. This popular feature also incorporates a CD player, weather band, iPod/MP3 input and the available GPS with a second LCD screen

that swivels to face your co-pilot. Sirius® satellite radio can be added, which includes a six-month complimentary subscription.

Passengers will appreciate the standard footrest and the available queen passenger seat. Heated seats can also be added for ultimate travel comfort. A powered drop-down windshield shade with solar screen and blackout shade provide privacy whenever you need it and also serves as a power visor.



Cab Features:

- Powered Adjustable UltraLeather Cab Seats
- Available Heated Seats
- 7" Deluxe Touch Screen Radio with Available GPS
- Available Sirius Satellite Radio

SET UP FOR FUN

The fun truly begins when you reach your destination. Extend the awning and enjoy a movie or the big game on the available 32" LCD TV mounted in the sidewall as part of the exterior entertainment center. The 8,000- or 10,000-watt Cummins Onan® Quiet Diesel™ generator lets you run the TV and multiple appliances wherever you go. It includes the automatic start system that starts the generator based on a pre-set indoor temperature or time of your choosing to run your TrueAir Maximum Comfort A/C or charge your batteries.

Large storage bays include movable panels and an available sliding tray to make loading and unloading easy. The exterior service center makes hookups go smoothly with color-coded labels and simple connection points. The 3-Position Controls for the hydraulic leveling jacks provide control from the service center, entrance door and cab so you can watch the jacks lower into position. Most systems can be conveniently controlled and monitored from the OnePlace® systems center located inside the coach.

Exterior Features

- Available Exterior Entertainment Center
- Available Sliding Storage Tray
- Electric Adjustable Mirrors w/Turn Signals and Sideview Cameras
- Service Center w/Color-Coded Labels
- 8,000-Watt Generator (40BD, 40CD)
- 10,000-Watt Generator (standard 42QD, 42AD, available 40BD, 40CD)



Enjoy the Ride



THE LEADER AT EVERY TURN™

MAXUM CHASSIS™

The perfect diesel pusher experience begins with a chassis designed like no other. Winnebago Industries engineers worked closely with Freightliner®—the proven leader in diesel motor home chassis—to create the Maxum Chassis: a stronger, better performing chassis with a lower center of gravity for unsurpassed ride and handling.

To top it off, the Maxum Chassis offers up to 220 cubic feet of exterior storage so you can load up with everything you need for weeks on the road.

The secret is its revolutionary lowered-rail design combined with our exclusive SuperStructure® construction and SmartSpace philosophy that increases the cross-coach storage height for the most efficient use of space.

Superior ride, handling and performance along with unsurpassed storage—the Maxum Chassis is the defining standard in diesel pusher performance.

The Maxum Chassis is backed by a 3-year/50,000 mile limited warranty, including towing and roadside assistance and more than 400 North American service locations, 93 Freightliner RV Oasis locations and a 24/7 help line.

- Cummins Turbo-Charged ISL Diesel Engine
- 34,320-lb. GVWR (40BD & 40CD)
- 44,320-lb. GVWR (42AD & 42QD)
- Allison® 3000 MH 6-Speed Transmission
- 10,000-lb. Hitch⁴ (40BD & 40CD)
- 15,000-lb. Hitch⁴ (42AD & 42QD)
- NeWay® Air Suspension
- Battery Disconnect System

No Shortcuts – No Compromises

You can compare features. You can compare styles. But when it comes to quality construction, there is no comparison. Only motor homes manufactured by Winnebago Industries harness the legendary strength and durability of our SuperStructure construction process—a process we've been perfecting for more than 50 years.

SuperStructure means a solid framework, steel and aluminum substructures and components built in-house to our exacting standards. It means managing each detail to ensure the integrity and quality of every coach. It means barcoding parts to save time during service and running every coach through a gauntlet of tests, including a high-pressure water test, before it leaves the factory.

Where other manufacturers cut corners, SuperStructure ensures the features you can't see are treated with the same care as the ones you can. When you buy an Itasca motor home, you are getting a coach that is built for you—and built to last.



The crowned, one-piece fiberglass roof is backed by a 10-year limited parts-and-labor roof skin warranty.

Durable, lightweight Thermo-Panel® sidewalls combine fiberglass, high-density block-foam insulation and the inner wall surface with aluminum support structures.

Metal substructures secure cabinets and appliances to add safety and stability.

An electrodeposition coating helps protect critical steel components.

SUPER STRUCTURE



Specially engineered interlocking joints connect the floor, sidewalls and roof into a cohesive unit.



TAKE A TOUR

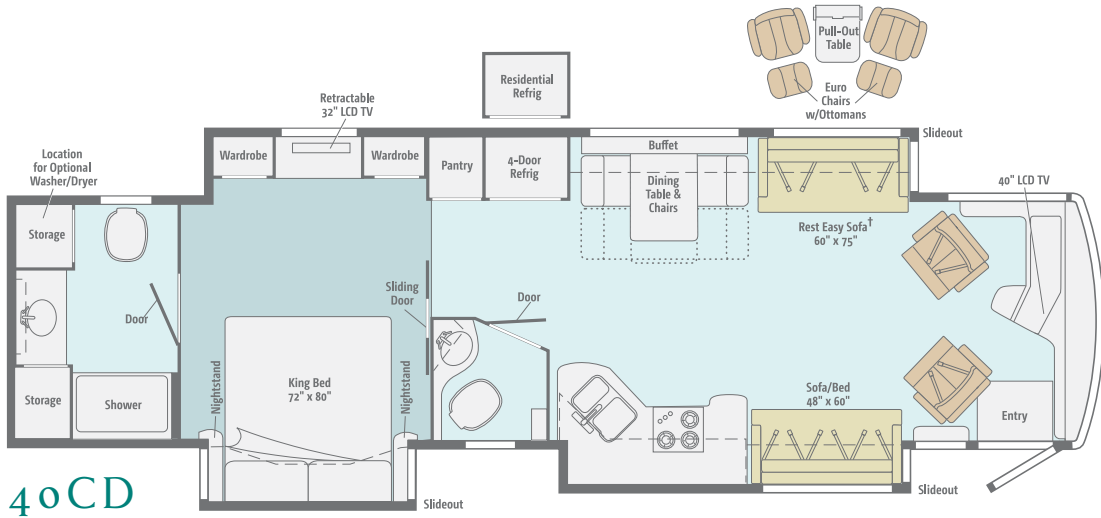
We're proud of our process, state-of-the-art facilities and the people who make Winnebago Industries number one. We invite you to visit

our complex in Forest City, Iowa, for a first-hand look at the dedication and technology behind every motor home we build.

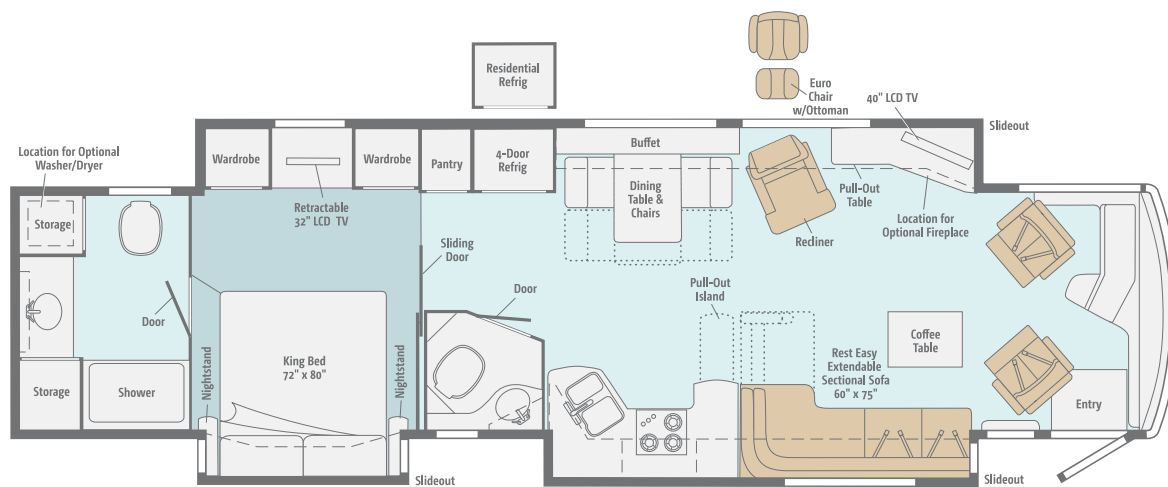
Visit us for the latest updates and web-exclusive content at: Goltasca.com

FLOORPLANS & SPECIFICATIONS

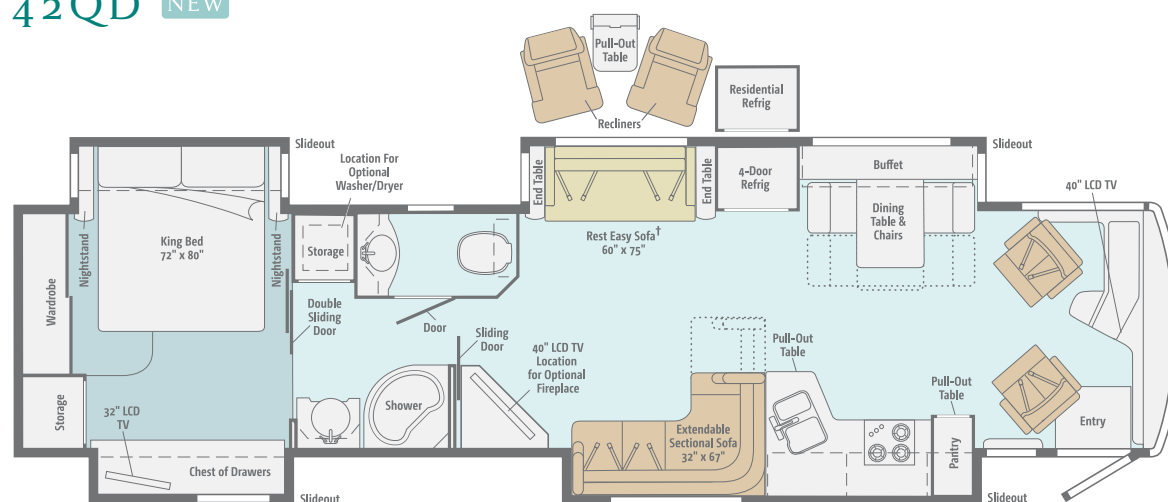
Dimensions shown are for sleeping space only and may vary due to styling differences. Dashed lines denote overhead storage areas. Floorplans and specifications are also available online at Goltasca.com.



† Available with single or dual controls. Dual-control option includes only two seat belts.



42QD NEW



42AD

Weights & Measures

	40BD	40CD	42QD NEW	42AD
Length	40'7"	40'7"	42'10"	42'10"
Exterior Height ¹	12'9"	12'9"	12'11"	12'11"
Exterior Width ²	8'5.5"	8'5.5"	8'5.5"	8'5.5"
Exterior Storage ³ (cu. ft.)	257.7	199.8	206.8	203.1
Awning Length	15'	18'	14'6"	20"
Interior Height	7'	7'	7'	7'
Interior Width	8'0.5"	8'0.5"	8'0.5"	8'0.5"
Freshwater Capacity w/Heater ⁴ (gal.)	90	90	90	90
Holding Tank Capacity - Black/Gray ⁴ (gal.)	57/94	54/117	53/105	53/105
LP Capacity ⁵ (gal.)	30	30	30	30
Fuel Capacity (gal.)	100	100	150	150
GCWR ⁶ (lbs.)	44,320	44,320	59,320	59,320
GVWR (lbs.)	34,320	34,320	44,320	44,320
GAWR - Front (lbs.)	14,320	14,320	14,320	14,320
GAWR - Rear (lbs.)	20,000	20,000	30,000	30,000
Wheelbase	276"	276"	279" + tag	279" + tag

Maxum® Freightliner® Chassis

34,320-lb. GVWR (40BD, 40CD)

44,320-lb. GVWR w/tag axle (42QD, 42AD)

400-hp Cummins® turbo-charged ISL 8.9L diesel engine

450-hp Cummins® 2010 EPA emissions equipped turbo-charged ISL 8.9L diesel engine (running line change fall 2010 production. Includes adjustable brake and accelerator pedals)

Allison® 3000 MH 6-speed electronic transmission, engine compression brake

Information display center

NeWay® front and rear suspension

160-amp. alternator

Air brakes w/ABS

Automatic leveling jacks w/3-Position Controls

Tow power package w/7-pin trailer wiring and I.P. wiring

Trailer Hitch⁶: 10,000-lb. drawbar/500-lb. maximum vertical tongue weight (40BD, 40CD)

Trailer Hitch⁶: 15,000-lb. drawbar/1,500-lb. maximum vertical tongue weight (42QD, 42AD)

Stylized aluminum wheels

Cab Conveniences

Cab Seats: armrests, lumbar support, multi-adjustable recline and six-way power pedestals

Passenger seat footrest

RV Radio®/Rearview Monitor System: 6.5" LCD color touch screen, CD player w/remotes, weather band, iPod/MP3 input, rearview color camera w/one-way audio and sideview camera system

Tilt/telescoping SmartWheel™ steering wheel

Cruise control

Power door locks w/remote keyless entry

Electric adjustable mirrors w/defrost and turn signal light in lower glass

12-volt powerpoints

Powered stepwell cover

Dual two-speed built-in defroster fans

Solar/blackout duo roller shades; powered for windshield, manual for driver/passenger windows

Chassis/house battery radio power switch

Dual map lights

C.B. wire prep

Optional Equipment

GPS navigation system

Sirius® satellite radio: 6-month complimentary subscription and iPod interface connector

Heated seats

Heated, queen passenger seat

Interior

40" LCD HDTV

Home Theater Sound System: CD/DVD player, receiver, amplifier, 5 speakers and 2 subwoofers

Amplified digital TV antenna

Area rug (lounging area 40BD, 42QD and rear bathroom 40CD, 42QD)

Key-activated slideroom master lock switch

HD video selection system

Satellite system ready (front and bedroom)

OnePlace® systems center

Tinted, dual-glazed, thermo-insulated coach windows

Vinyl ceiling

Dimmer switch

Powered roof vent (kitchen and bath)

Mini blinds (kitchen and bath)

Solar/blackout duo roller shades (lounging, dinette, bedroom)

Optional Equipment

Dirt Devil® central vacuum cleaner w/vac pan

Stackable washer/dryer

King-Dome® in-motion satellite dish, dual LNB, HD-ready (front and bedroom)

King-Dome automatic satellite dish antenna, HD-ready (front and bedroom)

Powered digital antenna

Electric fireplace (40BD, 42QD, 42AD)

Satellite TV receiver Your HD compatible

Kitchen

Corian® countertops, backsplash and sink covers

4-door refrigerator/freezer w/icemaker

Stainless steel microwave/convection oven w/sensor cook and vented range fan

3-burner range top w/glass cover and storage below

Filtered cold-water faucet

Soap dispenser

Optional Equipment

French door stainless steel refrigerator w/water and ice dispenser and bottom freezer drawer

Stainless steel drawer-style dishwasher

Stainless steel microwave/speedcook oven w/exterior vented range fan

Bath

Corian countertop

Flexible showerhead

Shower w/wall surround and shower seat

Moen® Posi-Temp® shower valve

Textured glass shower door

Skylight

Soap dispenser

Porcelain toilet

Bedroom

32" LCD HDTV

Stereo System: AM/FM, CD/DVD, alarm clock, iPod/MP3 input, headphone jack, speakers (2)

Ceiling fan

Innerspring queen mattress (40BD)

Powered king bed w/Ideal Rest™ digital comfort control mattress and remote controls (40CD, 42QD, 42AD)

Bedsread, pillows and shams

Cedar-lined wardrobe

Hamper

Optional Equipment

Queen or king bed w/Ideal Rest digital comfort control mattress (40BD)

Powered queen bed w/Ideal Rest digital comfort control mattress (40BD)

Exterior

Auxiliary docking lamps

Driver's side service light

Powered acrylic patio awning w/wind sensor

Powered acrylic entrance awning

Acrylic window awnings

Storage compartments w/movable panels

KeyOne™ lock system

Lighted storage compartments

Main entrance w/screen door

4 storage containers w/lids

7' folding steppladder

Porch and stepwell light

Automatic entrance steps

Rear ladder

Lower front protective mask

Double clear-coat exterior

Rear mud flaps

Stainless steel full-width rear mudguard

Polished stainless steel on lower valance doors and panels

Optional Equipment

Entertainment Center: 32" LCD TV, AM/FM stereo, CD/DVD player w/remotes, iPod/MP3 input w/iPod connector, TV jack, radio antenna, power outlets, speakers (2), subwoofer

90" slideout storage compartment tray w/folding 6' table

Portable refrigerator/freezer

Heating & Cooling System

Three 13,500 BTU roof air conditioners w/heat pumps and condensate pump

Aqua-Hot® 450 hydronic dual-zone heating system w/continuous hot water

Electrical System w/QuickPort®

Service Center: lighted, 120V AC power, cable input, power cord

PowerLine® energy management system

Auxiliary start circuit

50-amp. power cord

2,000-watt inverter/charger w/remote panel (2,800-watt w/refrigerator/freezer upgrade)

8,000-watt Cummins Onan® Quiet Diesel™ generator (40BD, 40CD)

10,000-watt Cummins Onan Quiet Diesel generator (42QD, 42AD)

AC/DC electrical distribution system

4 maintenance-free AGM (Absorbed Glass Mat) sealed batteries (6 batteries w/optional french door refrigerator)

Battery disconnect system (coach and chassis)

Automatic dual-battery charge control Shoreline/generator automatic changeover switch

Solar panel battery charger

Chassis battery charger/maintainer

Automatic generator start system

Optional Equipment

Power cord reel

10,000-watt Cummins Onan Quiet Diesel generator (40BD, 40CD)

Plumbing System w/QuickPort & QuickConnect®

Service Center: lighted, pressurized city water hook-up w/diverter fill, fresh water drain, drainage valves, exterior wash station w/pump switch, glove holder, black holding-tank flushing system, monitor panel, paper towel holder, portable satellite dish hook-up, 20' sewer hose, soap dispenser

TrueLevel™ holding-tank monitoring system

Winterization Package: water heater bypass valve and siphon tube

Full coach water filtration system

Permanent-mount LP tank w/gauge

On-demand water pump

Heated holding-tank compartment

Optional Equipment

Water supply hose w/reel

Safety

Seat belts

Child tether seat anchor (40BD)

LP, smoke and carbon monoxide detectors

10 BC fire extinguisher

Ground fault interrupter

Daytime running lamps

Fog lamps

High-mount brake lamps

Warranty⁷

12-month/15,000-mile basic warranty⁸, 36-month/36,000-mile limited warranty on structure⁹, 10-year limited parts and labor warranty on roof skin⁸

1 The height of each model is measured to the top of the tallest standard feature and is based on the curb weight of a typically equipped unit. The actual height of your vehicle may vary by several inches depending on chassis or equipment variations. Please contact your dealer for further information.

2 Ellipse floorplans feature a wide-body design – over 96". In making your purchase decision, you should be aware that some states restrict access on some or all state roads to 96" in body width. Before making your purchase decision, you should confirm the road usage laws in the states of interest to you.

3 The load capacity of your motor home is designated by weight, not by volume, so you cannot necessarily use all available space when loading your motor home.

4 Capacities are based on measurements prior to tank installation. Slight capacity variations can result due to installation applications.

5 Capacities shown are tank manufacturer's listed water capacity (W.C.). Actual filled LP capacity is 80% of listing due to overfilling prevention device on tank.

6 Actual towing capacity is dependent on your particular loading and towing circumstances which includes the GVWR, GAWR, and GCWR, as well as adequate trailer brakes. Please refer to the Operator's Manual of your vehicle for further towing information.

7 See separate chassis warranty.

8 See your dealer for complete warranty information.

NA Not Available

Not all items available in combination. See dealer for details.

Winnebago Industries® continuing program of product improvement makes specifications, equipment, model availability, and prices subject to change without notice. Comparisons to other motor homes are based on the most recent information available at printing.

DÉCOR AND EXTERIORS

INTERIOR DÉCOR

Three fabric collections and three coffee-glazed cabinet wood choices with brushed nickel hardware and hidden hinges let you select your perfect interior. UltraLeather™ provides a luxurious, better-than-leather alternative that is extra soft, durable and easy to clean.



Coffee-Glazed
Honey Cherry

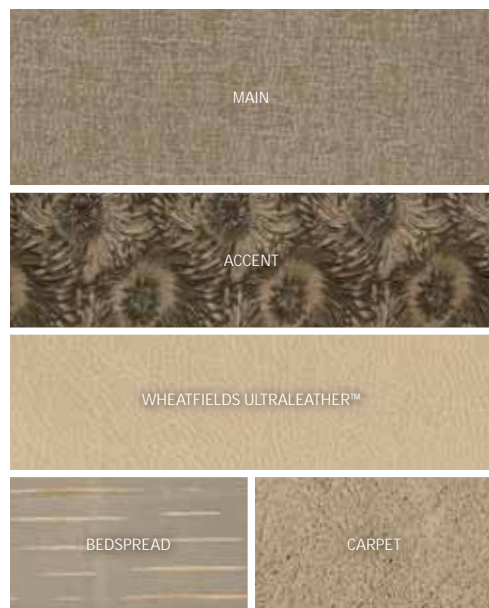


Coffee-Glazed
Belmont Maple

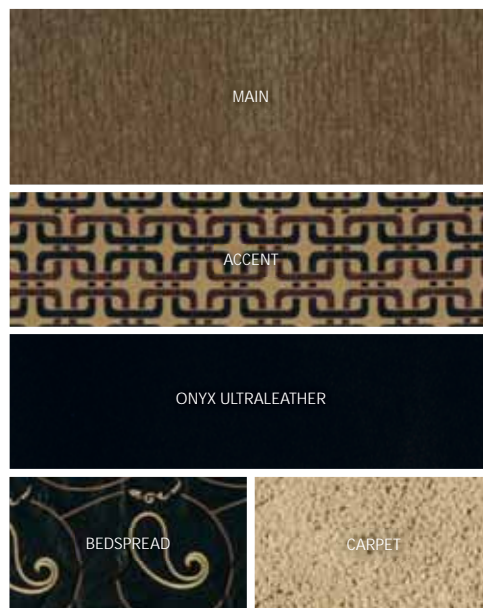


Coffee-Glazed
Forest Cherry

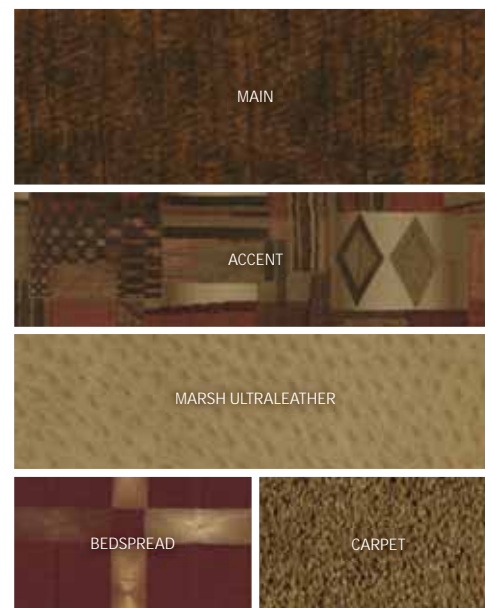
Serenade



Chain Link



Cimarron



Fabrics and carpets may change without notice or obligation.

EXTERIORS

The Ellipse has distinguished curb appeal thanks to totally new exterior styling and full-body paint with a double clear coat. A lower front protective mask safeguards the paint for years to come.



Sandalwood

{ FULL-BODY PAINT }



Tarnished Silver

{ FULL-BODY PAINT }



Foothills II

{ FULL-BODY PAINT }



Dark Cherry

{ FULL-BODY PAINT }



Golden Country

{ FULL-BODY PAINT }



Vermillion II

{ FULL-BODY PAINT }

BE PART OF SOMETHING SPECIAL



Itasca owners simply have more fun. When you buy an Ellipse, you can become a part of the Winnebago-Itasca Travelers Club. As a member, you'll meet other motor home enthusiasts, travel to interesting places with interesting people, and be the first to learn about new Itasca products. See what the WIT Club is all about at WITclub.com.

Members enjoy:

- Caravans and Rallies
- Local and State Group Activities
- RV Travel Benefits

COMMITTED TO SERVICE

We back our motor homes with best-in-class support both before and after the sale:

Premium Roadside Assistance

- 12-month/15,000-mile basic limited warranty
- 36-month/36,000-mile limited warranty on structure
- 10-year standard limited parts-and-labor roof skin warranty

■ Complimentary 24-hour roadside assistance program

- RV Technical Assistance Hotline
- RV Service Appointment Assistance
- Emergency Trip Interruption
- Emergency Message Service
- Nationwide Trip Routing
- Fee-Free Travelers Cheques



TRIPSaver
FAST TRACK PARTS

- TripSaver Fast Track Parts guarantees that in-stock warranty parts ship directly to your dealer within 24 hours
- National dealer service network



Goltasca.com Visit us on the web for more information on all of our motor homes, the latest product updates and a host of web-exclusive content.



THE MOST RECOGNIZED
NAME IN MOTOR HOMES™

Goltasca.com
NYSE: WGO

For Sales and Service Information Contact:

Seat belts are your most important hookup. Always buckle up.

©2010 Winnebago Industries, Inc.
Printed in USA