

EDGEWATER

By Sunny Brook



**GIVING YOU THE EDGE IN
ECONOMICAL OUTDOOR ADVENTURE**

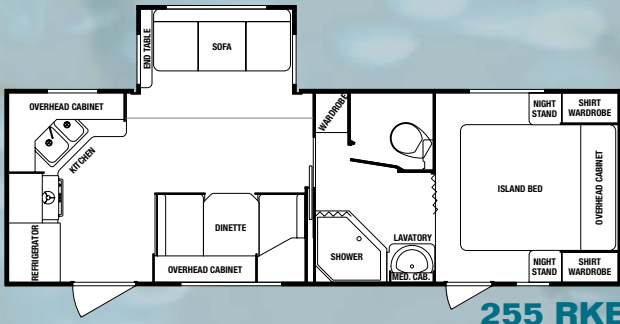




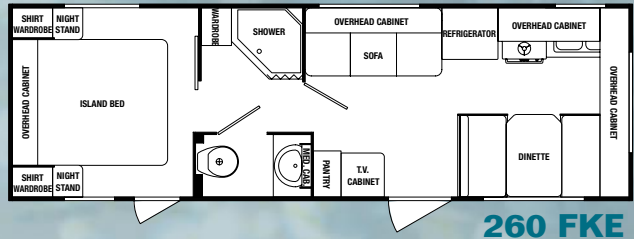
Dometic® brand refrigerator, radiused Lumber-Core screwed-together cabinetry (others use MDF fiber board that's stapled together), quality fabrics and a host of other great features are standard on Edgewater. See our standards list and compare. These features are usually found on much higher priced RV's!



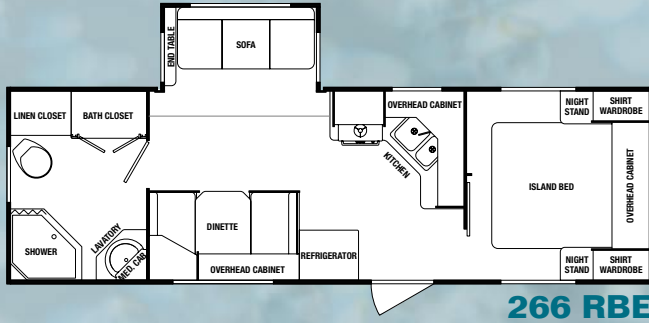
FLOORPLANS



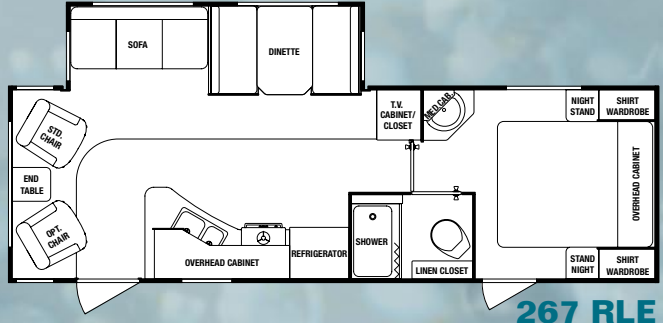
255 RKE



260 FKE



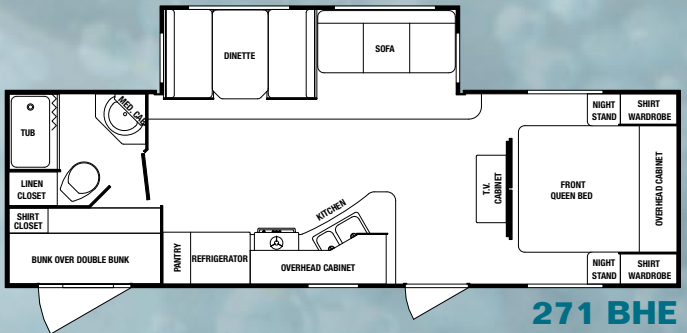
266 RBE



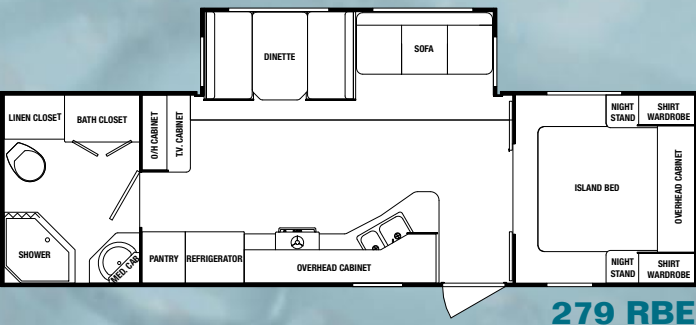
267 RLE



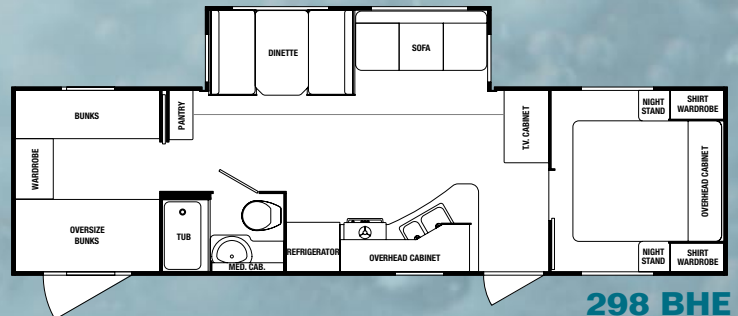
270 BHE



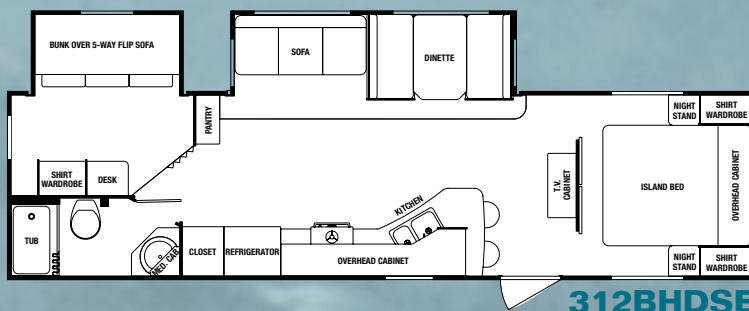
271 BHE



279 RBE



298 BHE



312BHDSE

EDGEWATER SPECIFICATIONS

	255 RKE	260 FKE	266 RBE	267 RLE	270 BHE	271 BHE	279 RBE	298 BHE	312 BHDSE
Exterior Length	28' 5"	28' 8"	28' 5"	29' 8"	28' 2 3/4"	29' 8 5/16"	31' 10"	33' 6"	34' 11"
Exterior Height w/AC	10' 8"	10' 8"	10' 8"	10' 8"	10' 7 1/4"	10' 8"	10' 8"	10' 8"	10' 10"
Exterior Width	8' 0"	8' 0"	8' 0"	8' 0"	8' 0"	8' 0"	8' 0"	8' 0"	8' 0"
Interior Height	6' 5"	6' 5"	6' 5"	6' 5"	6' 5"	6' 5"	6' 5"	6' 5"	6' 5"
Dry Hitch Weight	760	661	702	737	676	801	851	902	990
Dry Gross Weight	5780	4990	5639	5938	4830	5950	6241	6615	7150
GVWR	10,000	7,000	10,000	10,000	7,000	10,000	10,000	10,000	10,000
Axles	Dual 5,200 lbs.	Dual 3,500 lbs.	Dual 5,200 lbs.	Dual 5,200 lbs.	Dual 3,500 lbs.	Dual 5,200 lbs.	Dual 5,200 lbs.	Dual 5,200 lbs.	Dual 5,200 lbs.
Tire Size	ST225/75D-15D	ST205/75D-14C	ST225/75D-15D	ST225/75D-15D	ST205/75D-14C	ST225/75D-15D	ST225/75D-15D	ST225/75D-15D	ST225/75D-15D
Hitch Height	21 1/2"	19 1/4"	21 1/2"	21 1/2"	19 1/4"	21 1/2"	21 1/2"	21 1/2"	21 1/2"
Awning size	16'	16'	16'	16'	19'	16'	16'	16'	16'
Furnace Size	25M BTU	25M BTU	25M BTU	25M BTU	25M BTU	25M BTU	25M BTU	25M BTU	30M BTU
Dometic Gas/Elec. Refer	Double Door	Double Door	Double Door	Double Door	Double Door	Double Door	Double Door	Double Door	Double Door
Fresh Water Capacity	56	56	56	56	56	56	56	56	56
Black Water Capacity	41	41	41	41	41	41	41	41	41
Gray Water Capacity	76	41	76	41	41	41	41	41	76
Sleeping Capacity	6	6	6	6	8	8	6	10	9

EDGEWATER FEATURES MORE COMMONLY FOUND ON HIGHER PRICED RV'S

STANDARD FEATURES

INTERIOR

- Radiused Lumber-Core / screwed-together cabinetry
- Dinette booths with under-seat storage
- Porcelain toilet with foot flush
- Overhead medicine cabinet with mirrored door
- 12v power bath roof exhaust vent
- Skylight over tub / shower

EXTERIOR

- 8' exterior width
- Hose carrier bumper with end caps
- R7 fiberglass insulation
- Radius clamp ring windows

- Rubber roof with 12-year warranty
- Patio awning
- Rain gutters
- Triple entry step (easy to open)
- Bunk models include XL bike door with fold-up bunk for easy storage of gear

APPLIANCES & EQUIPMENT

- Dometic double door refrigerator
- 3-burner high-output range w/21" oven
- Forced-air furnace with thermostat
- 6-gallon LP water heater
- Range hood with 12v light and exhaust fan
- In-floor rigid heat ducting
- Battery disconnect switch
- Wall mounted systems monitor panel

SAFETY EQUIPMENT

- Fire extinguisher
- Smoke detector
- LP leak detector

OPTIONAL EQUIPMENT

- Swivel rocker
- Outside shower
- 15.0M BTU A/C (upgrade)
- Spare tire, carrier and cover
- Roof ladder
- Tinted safety glass
- TV shelf with electrical jack in bedroom
- CSA
- Patio door (312 BHDSE only)
- 2nd entrance door (model 312 BHDSE only)

Your local Edgewater dealer is:

EDGEWATER

By SunnyBrook



All illustrations and specifications contained in this literature are based on the latest product information available at the time of printing. SunnyBrook RV, Inc. reserves the right to make changes to colors, materials, specifications and pricing without notice or obligation. Photography may show optional equipment available at an additional cost. Items used as props in photography are not part of the packages. All liquid capacities and weights are approximate and dimensions are nominal. SunnyBrook reserves the right to make changes and improvements without incorporating these changes into similar models produced at an earlier date. Consult your local, authorized Edgewater or SunnyBrook dealer for the latest information and changes. SunnyBrook RV, Inc. continues to be a member in good standing of the RVIA.
S-60-017 Printed in the USA © SunnyBrook RV, Inc 10/09

www.sunnybrookrv.com
(574) 825-5250

201 14th Street • P.O. Box 2001
Middlebury, IN 46540