

2011 **Aspect**





2011 **Aspect**

Class C connoisseurs looking for the class and comfort of a touring vehicle will find it easy to call the 2011 Winnebago Aspect® home. Distinguished exterior styling hints at the luxurious amenities and conveniences offered inside. Models offering double and triple slideouts welcome you with spacious accommodations whether

you are enjoying a quick weekend getaway or extended retreat, complete with the driveability of a Class C. And, because it is built by Winnebago Industries®, you know it is built to last. Prepare to hit the road in style with a 2011 Winnebago Aspect.

What Relaxes You?

Maybe it's movies or music. With a 26" LCD TV, DVD player, home theater sound system and video selection system, the entertainment center won't disappoint. For additional programming flexibility, choose the Your HD compatible satellite receiver (requires the available King-Dome® in-motion satellite system) and you'll have the ability to turn your DISH Network® programming on and off as you desire to fit your travels—an RVer's dream come true.

Looking for an added touch of luxury? Choose the available interior upgrade package that includes a stylish dash appliqué, range backsplash, intimate rope lighting, high-quality MCD American Duo® solar/blackout roller shades, and the BenchMark® dinette with the easily adjustable Dream Dinette™ table (30C).

If you enjoy the satisfaction of preparing a gourmet feast or just a quick snack, the full-featured galley makes it a snap. With a three-burner range and an available microwave/convection oven, your entire cookbook is in play. Bring all the kitchen gear you need, thanks to the abundant cabinetry with full-extension drawer slides for easy access.



UltraLeather™ The 28B features a large U-shaped dinette and a stylish Euro chair recliner, each in soft and supple UltraLeather that is exceptionally durable and easy to clean.



Rest Easy® At the press of a button, the available Rest Easy multi-position lounge glides from sofa to recliner to comfortable bed (30C).



Skylight Brighten your day and stay cool with the available skylight/air vent that includes a shade and screen.

Comfort Sofa Sleeper Available on the 30C, this sofa easily folds out into a bed with a self-inflating mattress.



1) By day it's a plush sofa.



2) It converts easily into a bed.



3) The mattress inflates and deflates with an automatic pump.



Recognized Quality The Recreation Vehicle Dealer Association bestows its annual Quality Circle Award to the manufacturers that provide exceptional products, service and support. Only one manufacturer has received this honor for fourteen consecutive years: Winnebago Industries.®

Visit us for the latest updates and expanded key feature content at:

GoWinnebago.com

All the Comforts of Home

The rear slideout provides plenty of room for the walk-around queen bed and you can pack plenty of clothes for extended journeys in the spacious wardrobe. By adding the 19" LCD TV, you can take advantage of movies played on the DVD player in the cab entertainment center from the comfort of your queen bed.

In the cab you can enjoy CDs, AM/FM stereo or music from your iPod played through the available RV Radio with touch screen controls. Upgrade to the Sirius® Satellite radio and receive a complimentary six-month subscription to over 120 digital channels.

The exterior comes in your choice of deluxe graphics or full-body paint. Fiberglass running boards and a power entrance step come standard. The power mirrors feature built-in defrost that you'll find handy on frosty or foggy mornings. The available powered awning quickly creates a relaxing, shaded retreat on warm afternoons.



30C Granite Falls with Coffee-Glazed Sierra Maple



LCD Touch Screen The available RV Radio with 6.5" touch screen also displays the rearview camera images.



TrueLevel™ The TrueLevel holding-tank monitoring system uses sonar technology rather than probes that can clog or corrode so you'll have accurate readings every time.



Shower The 30C shower features a skylight and an elegant textured-glass door. A self-cleaning retractable shower door is found in the 28B.



Vanity The bedroom vanity provides the perfect spot to get ready.



OnePlace® Easily monitor and control key on-board systems with the OnePlace systems center.

Visit us for the latest updates and expanded key feature content at: GoWinnebago.com



Take a Tour We're proud of our processes, state-of-the-art facilities and the people who make Winnebago Industries number one. We invite you to visit our complex in Forest City, Iowa, for a first-hand look at the dedication and technology behind every motor home we build.

Visit us for the latest updates and expanded key feature content at:

GoWinnebago.com

No Shortcuts—No Compromises

You can compare features. You can compare styles. But when it comes to quality construction, there is no comparison. Only motor homes manufactured by Winnebago Industries harness the legendary strength and durability of our SuperStructure® construction process—a process we've been perfecting for more than 50 years.

SuperStructure means a solid framework, steel and aluminum substructures and components built in-house to our exacting standards. It means managing each detail to ensure the integrity and quality of every coach. It means barcoding parts to save time during service and running every coach through a gauntlet of tests including a high-pressure water test before it leaves the factory.

Where other manufacturers cut corners, SuperStructure ensures the features you can't see are treated with the same care as the ones you can. When you buy a Winnebago motor home, you are getting a coach that is built for you—and built to last.



The crowned, one-piece **fiberglass roof** is backed by a 10-year limited parts-and-labor roof skin warranty. Fiberglass offers superior strength and durability over less attractive rubber roofs found on so many competitive models that can streak and degrade over time.

Durable, lightweight **Thermo-Panel® sidewalls** combine fiberglass, high-density block-foam insulation and the inner wall surface with aluminum support structures.

Metal substructures secure cabinets and appliances to add safety and stability.

An **electrodeposition coating** helps protect critical steel components.

SUPER STRUCTURE®

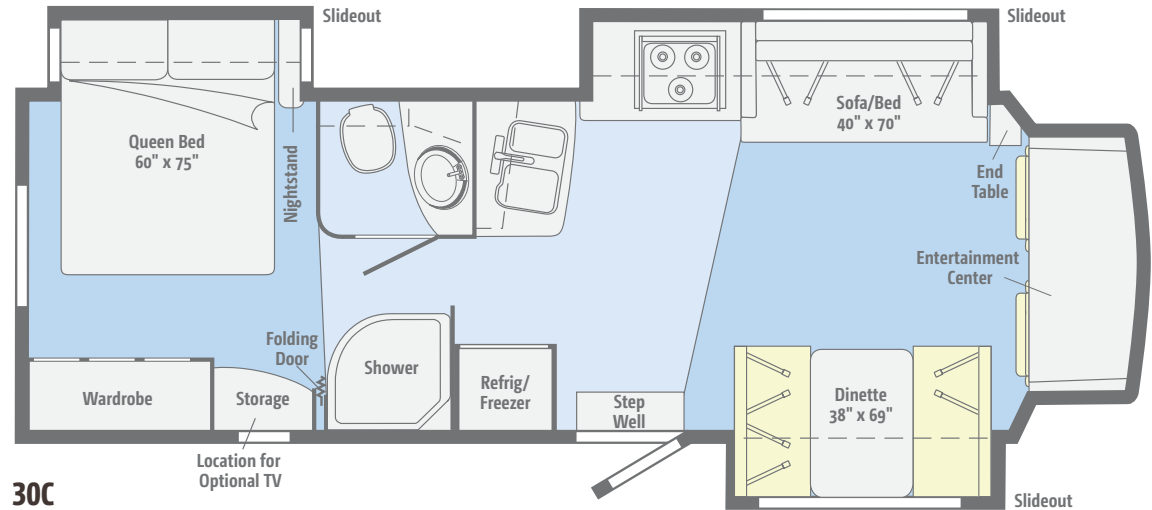
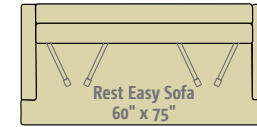
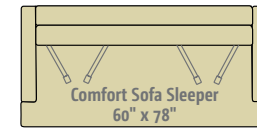
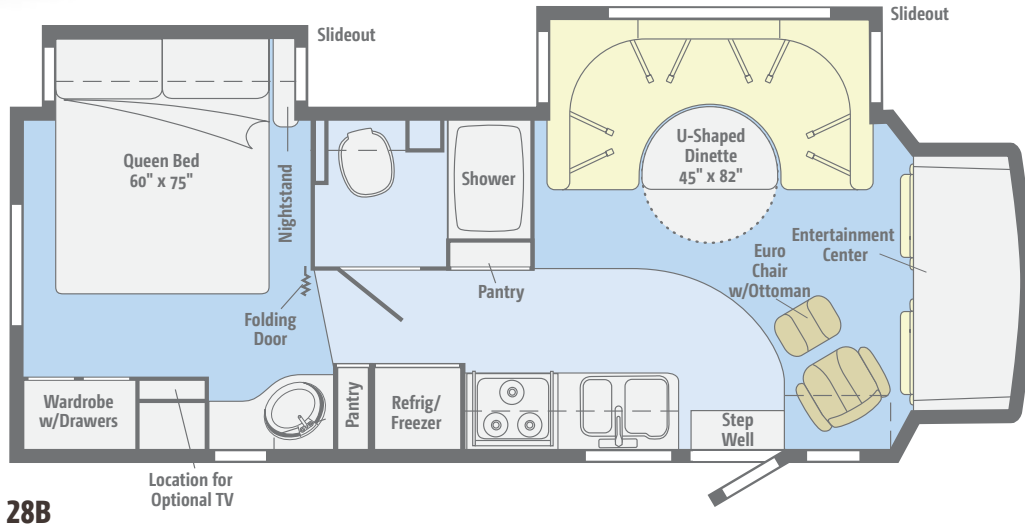


Specially engineered **interlocking joints** connect the floor, sidewalls and roof into a cohesive unit.



Floorplans & Specifications

Dimensions shown are for sleeping space only and may vary due to styling differences. Dashed lines denote overhead storage areas. Floorplans and specifications are also available online at GoWinnebago.com.



Weights & Measures

Length	29'7"	31'7"
Exterior Height¹	10'6"	10'5"
Exterior Width	7'11"	7'11"
Exterior Storage² (cu. ft.)	31.8	18.8
Awning Length	19'	19'
Interior Height	6'5"	6'5"
Interior Width	7'8"	7'8"
Freshwater Capacity w/Heater³ (gal.)	33	33
Holding Tank Capacity - Black/Gray³ (gal.)	27/35	27/35
LP Capacity⁴ (gal.)	18	18
Fuel Capacity (gal.)	55	55
GCWR⁵ (lbs.)	20,000	20,000
GVWR (lbs.)	14,500	14,500
GAWR - Front (lbs.)	5,000	5,000
GAWR - Rear (lbs.)	9,500	9,500
Wheelbase	200"	220"

CHASSIS

Ford® E450 Chassis

- 305-hp 6.8L V10 SEFI Triton® engine
- TorqShift™ 5-speed automatic transmission
- 120-amp. alternator

4-wheel ABS

Trailer Hitch⁶: 5,000-lb. drawbar/350-lb. maximum vertical tongue weight and wiring w/7-pin connector

Stainless steel wheel liners

OPTIONAL EQUIPMENT

Rear auxiliary air springs

HWH® automatic hydraulic leveling jacks w/automatic controls (front and rear)

Stylized aluminum wheels

CAB CONVENIENCES

Cab Seats: armrests, lumbar support and multi-adjustable slide/recline

Beverage holders

RV Radio®: AM/FM stereo, CD player, weather band, iPod/MP3 input, remote

Chassis/house battery radio power switch

Tilt steering wheel

Cruise control

Power steering

12-volt powerpoints

Power door locks

28B

30C

Sunvisors

Power exterior mirrors w/defrost

OPTIONAL EQUIPMENT

RV Radio/Rearview Monitor System: 6.5" LCD touch screen color monitor, CD player, weather band, handheld remote, iPod/MP3 input, color camera w/one-way audio, satellite-ready

Sirius® Plug-N-Play Satellite Radio System: 6-month complimentary subscription, 2 docking ports and iPod interface connection

INTERIOR

Home Theater Sound System: receiver, DVD player, amplifier, 5 speakers, subwoofer

26" LCD TV

Satellite system ready

Video selection system

Cab divider curtain

MCD American Solo® blackout roller shades (lounge, dinette and bedroom)

Mini blinds

 (galley)

Vinyl ceilings

Tinted windows

Amplified digital TV antenna

OnePlace® systems center

Powered roof vent

 (bath)

Roof vent

 (lounge & bedroom)

Key-activated slideroom master lock switch

OPTIONAL EQUIPMENT

Skylight w/sliding screen, shade and vent

Interior Upgrade Package: rope lighting, range backsplash, dash and beverage tray appliqué, BenchMark® w/Dream Dinette™ adjustable table (NA 28B), carpet floor mats in the cab, 2 galley sink covers, range cover, raised-panel stile-and-rail refrigerator door insert, 2 sofa throw pillows (NA 28B), mirror (28B), picture (30C), MCD American Duo® solar/blackout roller shades in the lounge, dinette and bedroom

Tinted, dual-glazed, thermo-insulated windows

Satellite TV antenna system

King-Dome® HD-ready in-motion satellite dish antenna system w/dual LNBs and elevation sensing unit

Your HD compatible satellite TV receiver

Powered roof vent

 (bedroom)

GALLEY

Thermo-formed laminated countertops w/flip-up extension

2-door refrigerator/freezer

3-burner range top w/storage below

Microwave oven w/vented range fan

OPTIONAL EQUIPMENT

Cold water filtration system

Stainless steel microwave/convection oven w/range fan

BATH

Thermo-formed laminated countertop

Skylight

Flexible showerhead

Curved textured glass shower door

 (30C)

Retractable, self-cleaning shower screen (28B)

Porcelain toilet

Water pump switch

BEDROOM

Queen bed w/foam mattress, headboard, bedspread, pillows and pillow shams

OPTIONAL EQUIPMENT

19" LCD TV, DC

EXTERIOR

Ladder

Porch light w/interior switch

Automatic entrance step

Stepwell light w/interior switch

Entrance w/screen door and step

Premium high-gloss skin

Rear mud flaps

Fiberglass running boards w/wheel lips

OPTIONAL EQUIPMENT

Entertainment Center: AM/FM stereo, CD player w/remote, DC and AC receptacles, 2 speakers, TV jack, lockable compartment, radio antenna, removable TV table

Power patio awning w/metal wrap

HEATING & COOLING SYSTEM

13,500 BTU roof-mount, high-efficiency air conditioner

30,000 BTU low-profile, ducted furnace

OPTIONAL EQUIPMENT

A/C heat pump

ELECTRICAL SYSTEM

AC/DC load center, 45-amp. converter/charger

Service Center: 30-amp. 25' power cord, cable TV input, portable satellite dish hook-up

Battery disconnect system

 (coach)

Automatic dual battery charge control

Auxiliary start circuit

Two deep-cycle, Group 31 batteries

OPTIONAL EQUIPMENT

4,000-watt Cummins Onan® MicroQuiet™ gas generator

300-watt DC/AC inverter

PLUMBING SYSTEM

Service Center: city water hook-up w/diverter valve, drainage valves, 10' sewer hose, exterior wash station w/lighted pump switch

6-gallon electric ignition, 110V/LP water heater w/Energy Management System (EMS)

TrueLevel™ holding-tank monitoring system

Winterization Package: water heater bypass valve and siphon tube

Permanent-mount LP tank w/gauge

Heated holding-tank compartment

On-demand water pump

SAFETY

Seat belts

Driver and passenger air bags

Child seat tether anchor

 (dinette)

LP, smoke and carbon monoxide detectors

10 BC fire extinguisher

Ground fault interrupter

High-mount brake lamps

WARRANTY⁶

**12-month/15,000-mile basic warranty⁷
36-month/36,000-mile limited warranty on structure⁷
10-year limited parts-and-labor warranty on roof skin⁷**

- ¹ The height of each model is measured to the top of the tallest standard feature and is based on the curb weight of a typically equipped unit. The actual height of your vehicle may vary by several inches depending on chassis or equipment variations. Please contact your dealer for further information.
- ² The load capacity of your motor home is designated by weight, not by volume, so you cannot necessarily use all available space when loading your motor home.
- ³ Capacities are based on measurements prior to tank installation. Slight capacity variations can result due to installation applications.
- ⁴ Capacities shown are tank manufacturer's listed water capacity (WC). Actual filled LP capacity is 80% of listing due to overfilling prevention device on tank.
- ⁵ Actual towing capacity is dependent on your particular loading and towing circumstances which includes the GVWR, GAWR, and GCWR, as well as adequate trailer brakes. Please refer to the Operator's Manual of your vehicle for further towing information.
- ⁶ See separate chassis warranty.
- ⁷ See your dealer for complete warranty information.

NA Not Available

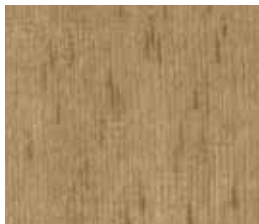
Not all items available in combination. See dealer for details.

Winnebago Industries® continuing program of product improvement makes specifications, equipment, model availability, and prices subject to change without notice. Comparisons to other motor homes are based on the most recent information available at printing.

Décor

Choose from three fabric collections and four cabinet woods with satin nickel hardware.

Stargazer with Fields UltraLeather™



Main



Accent



UltraLeather



Bedsread



Carpet

Granite Falls with Manila UltraLeather



Main



Accent



UltraLeather

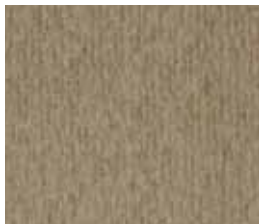


Bedsread



Carpet

Sunset Ridge with Wheatfields UltraLeather



Main



Accent



UltraLeather



Bedsread



Carpet



Honey Cherry



Belmont Maple



Forest Cherry



Coffee-Glazed
Sierra Maple

Fabrics and carpets may change without notice or obligation.

Exteriors

Deluxe graphics and fiberglass running boards come standard. Upgrade to full-body paint for even more curb appeal.



Granite Silver
DELUXE GRAPHICS



Metallic Gold
DELUXE GRAPHICS



Smokestone
FULL-BODY PAINT



Wedgewood
FULL-BODY PAINT



Red Dawn
FULL-BODY PAINT



Sierra
FULL-BODY PAINT



THE MOST RECOGNIZED
NAME IN MOTOR HOMES™



Be Part of Something Special

WIT Club Winnebago owners are like family. Joining the Winnebago-Itasca Travelers Club is a great way to meet and travel with other Winnebago enthusiasts.

Members enjoy:

- Caravans and Rallies
- Local and State Group Activities
- RV Travel Benefits



Committed to Service

We back our motor homes with best-in-class support both before *and* after the sale:

- 12-month/15,000-mile basic limited warranty
- 36-month/36,000-mile warranty on structure
- 10-year standard limited parts-and-labor roof skin warranty
- Complimentary 24-hour roadside assistance program
 - RV Technical Assistance Hotline
 - RV Service Appointment Assistance
 - Emergency Trip Interruption
 - Emergency Message Service
 - Nationwide Trip Routing
 - Fee-Free Travelers Cheques



- TripSaver Fast Track Parts guarantees that in-stock warranty parts ship directly to your dealer within 24 hours
- National dealer service network



GoWinnebago.com Visit us on the web for more information on all of our motor homes and the latest product updates. Plus, watch videos and see other web-exclusive content in our expanded key features section.



THE MOST RECOGNIZED NAME IN MOTOR HOMES™

NYSE listing: WGO

For Sales and Service Information Contact:

Printed in USA

Seat belts are your most important hookup. Always buckle up.
© 2010 Winnebago Industries, Inc.