

Regency 2010

Experience the Difference



REGENCY 2010



Regency GT

Adventure Awaits



Regency GT29DBS in Metropolitan Décor.

The road trip never looked so good! Enjoy the spacious comfort and sleek design of the GT29DBS, complete with 68" sofa bed and 26" LCD TV, all complemented by beautiful cherry wood cabinetry. You'll be the envy of all your traveling friends!

Regency GT29DBS in Metropolitan Décor.

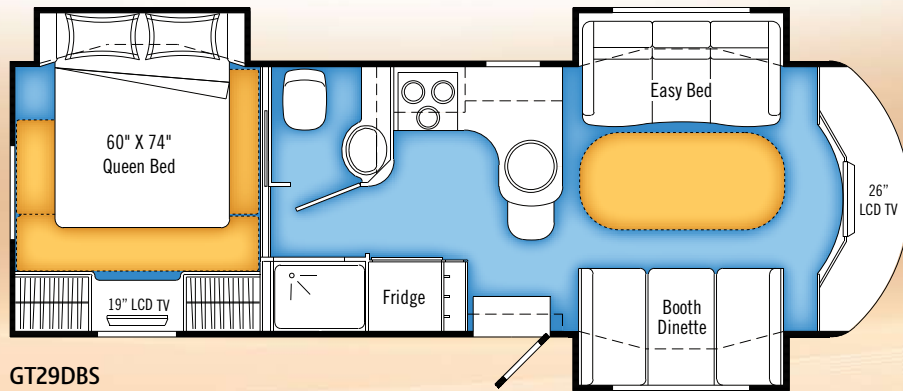
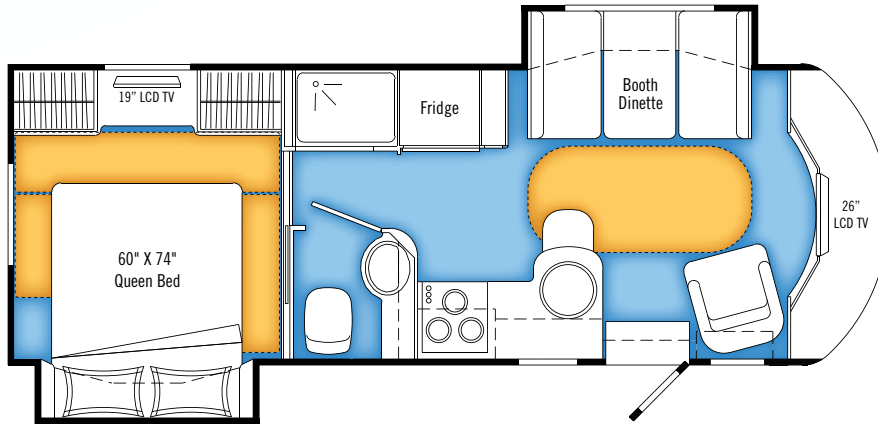
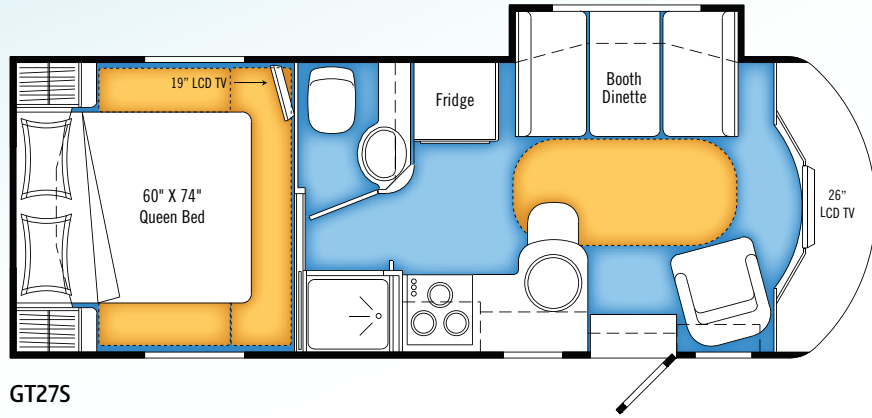


Regency GT28DB in Cole Harbour Décor.



If its freedom you're looking for, you'll find it in the Regency GT! Built on a deluxe Ford chassis with many amenities and complete with an E-450 V-10 Triton engine, this model has all the power needed to whisk you to your dream destinations while the spacious interior and distinctive furnishings will assure you arrive in style. Created with excellent maneuverability, the GT will have you feeling equally at home on the highway, at the campsite, or just taking a quick trip into town for supplies. We just know you're going to love it!

Floorplans



Linoleum Optional Throw Rug

Regency GT29DBS in Metropolitan Décor.



Exterior



Black Currant

Regency C



Step into the Regency Class C and you'll find everything you're looking for! A sofa and booth dinette provide a lovely space for entertaining, and the 56x78 overhead bunk offers extra sleeping space for unexpected guests.



Nothing has been overlooked! The Class C's offerings include a stylish booth dinette, an efficient galley with adjacent 7 cu ft fridge, and a comfortable bedroom complete with handsewn bedding available in 5 decors.



Photos on pages 4 and 5 are the Regency C30G Floorplan.

Destination: Anywhere



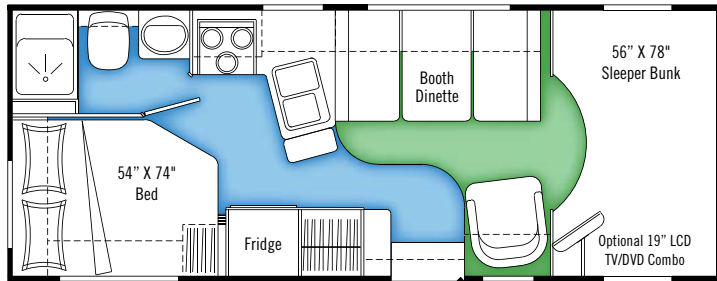
You'll be headed for adventure and all the excitement you can handle when you hit the road in your Regency Class C! Whether you're planning a family trip to a national monument or a weekend getaway in the mountains for two, the accommodating Class C is a perfect way to pursue your dreams. The well-appointed interior, built on a Ford Chassis with V-10 Triton Engine, is sure to surpass all your expectations.

Exterior

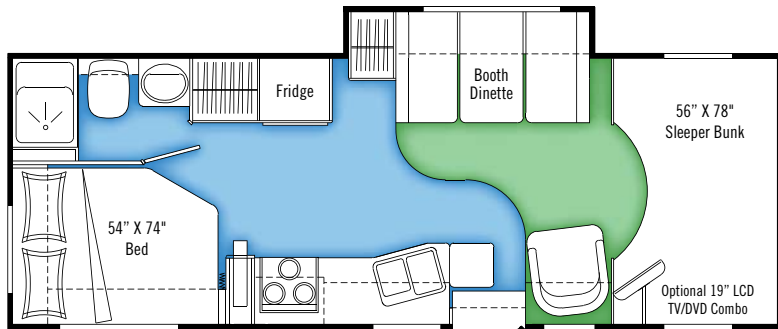


Black Currant

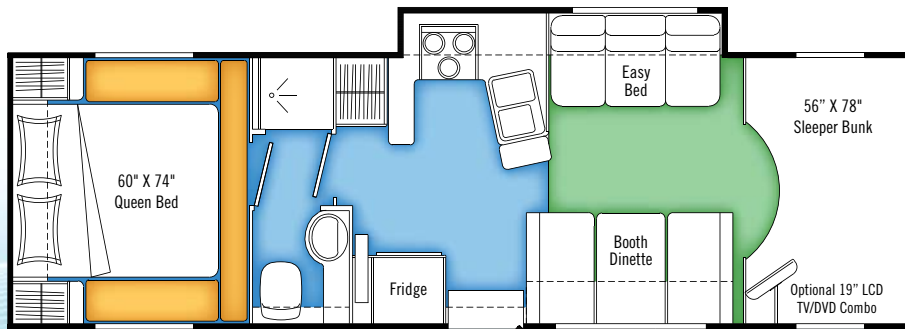
Floorplans



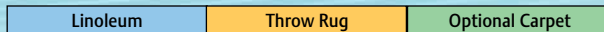
C24



C25D



C30G



You'll enjoy creating delicious meals in this stylish galley, complete with microwave, 3-burner cooktop/oven, and double sinks for easy clean up.

Décor (Regency GT & Regency C)

Captain's Chair*

Accent

Bedsread

Carpet



Encore (Regency C Only)



Cole Harbour



Tranquil Mist



Sun Chasers



Metropolitan



Cabinetry (Regency GT & Regency C)

Chestnut Cherry wood cabinetry is standard on the 2010 Regency.

* Also Dinette, Sofa or Easy Bed for GT; Easy Bed, Cocktail Chair for C.

STANDARDS AND OPTIONS

| | C24 | C25D | C30G | GT27S | GT280B | GT29DBS |
|---|-----|------|------|-------|--------|---------|
| CHASSIS AND SUSPENSION | | | | | | |
| 10 Air Compressor w/ Individual Gauges (Wireless) | - | - | - | 0 | 0 | 0 |
| Block Heater | S | S | S | S | S | S |
| Chassis - Ford 14,500 GVW, E-450, 6.8L EFIV-10 Triton w/ Generator Ready | S | S | S | S | S | S |
| Hitch - Trailer Hitch Receiver w/ wiring - 500/5000 lb | S | S | S | S | S | S |
| Rear Airbag Assist Suspension | S | S | S | S | S | S |
| Spare Tire - Crank Down Underfloor Mount | - | - | S | - | - | - |
| Spare Tire w/Carrier | S | S | - | - | - | - |
| Spare Tire w/Carrier and Continental Cover | - | - | - | S | S | S |
| Tires - Radial Ply | S | S | S | S | S | S |
| Transmission - Automatic 5 Speed c/w Overdrive and Tow Haul Mode | S | S | S | S | S | S |
| Wheel Simulators | S | S | S | S | S | S |
| DRIVERS AREA CONVENIENCES | | | | | | |
| Air Conditioning - Chassis | S | S | S | S | S | S |
| Cruise Control and Tilt Steering Wheel | S | S | S | S | S | S |
| Mats - Rubber Floor Mats | S | S | S | - | - | - |
| Mirror - Interior Rear View Mirror | S | S | S | - | - | - |
| 10 Mirror - Interior Rear View Mirror w/ Integrated Rear View Camera | - | - | - | S | S | S |
| 10 Mirrors - Heated Remote Mirrors | - | - | - | S | S | S |
| Mirrors - Automotive Styled Exterior Mirrors | S | S | S | - | - | - |
| Power Windows and Door Locks | S | S | S | S | S | S |
| Rear View Camera/Monitor Color | 0 | 0 | 0 | - | - | - |
| Seat - Flexsteel Faux Leather Captain's Chair - Power Driver's Seat | S | S | S | S | S | S |
| Switch - Battery Selector Switch for Radio | S | S | S | S | S | S |
| VEHICULAR | | | | | | |
| Light - High Mounted Rear Stop Light - LED Long Life | S | S | S | - | - | - |
| Rust Protection | 0 | 0 | 0 | 0 | 0 | 0 |
| Undercoating - Chassis | S | S | S | S | S | S |
| 10 Leveling Jacks - HWH Automatic Leveling Jacks | - | - | - | 0 | 0 | 0 |
| CONSTRUCTION | | | | | | |
| Roof - Aluminum Framed Vacuum Bonded Insulated One Piece EPDM Roof | S | S | S | - | - | - |
| Roof - Aluminum Framed Vacuum Bonded Insulated Domed Kemplite FRP Flexroof | - | - | - | S | S | S |
| Wall - Aluminum Framed Vacuum Bonded Insulated Wall w/Thermal Break | S | S | S | S | S | S |
| Enclosed, Insulated & Heated Holding Tanks | S | S | S | S | S | S |
| Floor - Steel Framed Vacuum Bonded Insulated Floor Construction | S | S | S | S | S | S |
| 10 Power Gear Slide Mechanism | - | S | S | S | S | S |
| Vacuum Bonded Gelcoat FRP Exterior | S | S | S | - | - | - |
| Vacuum Bonded Gel Coat Vetrolite Fiberglass Sidewalls | - | - | - | S | S | S |
| Windows - Thermal Pane Tinted Radius Cornered Windows | S | S | S | S | S | S |
| EXTERIOR | | | | | | |
| Assist Handle - Interior Mounted | S | S | S | - | - | - |
| Exterior Assist Handle - Monogrammed | - | - | - | S | S | S |
| Concealed Locking Fuel Filler | S | S | S | S | S | S |

| | C24 | C25D | C30G | GT27S | GT280B | GT29DBS |
|---|-----|------|------|-------|--------|---------|
| EXTERIOR (continued) | | | | | | |
| Doors - Exterior Flush Radiused Style Baggage Doors | S | S | S | S | S | S |
| Fiberglass Front And Rear Mask | S | S | S | S | S | S |
| Paint - Full Body Exterior Paint w/ Clear Coat | 0 | 0 | 0 | S | S | S |
| Painted Skirts | S | S | S | - | - | - |
| Ladder - Exterior Ladder | S | S | S | S | S | S |
| Light - Porch Light w/ Yellow Lens and Interior Wall Switch | S | S | S | - | - | - |
| Light - Scare Light w/ Interior Wall Switch | - | - | - | S | S | S |
| Light Package in Baggage Compartments | S | S | S | S | S | S |
| Running Boards - Fiberglass Flares & Running Boards | S | S | S | S | S | S |
| Step - Electric Entrance Door Step | S | S | S | S | S | S |
| Storage - Pass Through Storage Compartment at Rear | - | - | S | S | - | - |
| 10 Large Rear Storage Compartments | S | S | - | S | S | S |
| 10 Rear Window | S | S | - | - | S | S |
| INTERIOR | | | | | | |
| Cabinet - Storage Cabinets on Sides of Overhead Bunk | S | S | S | - | - | - |
| Cabinets - Cherry Finished Cabinet Construction w/ Raised Solid Cabinet Doors & Cabinet Ends | S | S | S | S | S | S |
| Detectors - Electronic Smoke, LP and CO Detectors | S | S | S | S | S | S |
| Drapes - Privacy Drape - Bedroom | S | S | - | - | - | - |
| Drapes - Privacy Drape - Cab | S | S | S | S | S | S |
| Drawers - Full Extension Ball Bearing Drawer Tracks | S | S | S | S | S | S |
| Fire Extinguisher - Dry Chemical | S | S | S | S | S | S |
| Flooring - Carpet in Living Area | 0 | 0 | 0 | - | - | - |
| Flooring - Linoleum Flooring Throughout | S | S | S | S | S | S |
| Flooring - Removable Surged Carpet in Bedroom | - | - | S | - | - | - |
| Flooring - Throw Carpet Package for Bedroom and Living Area | - | - | - | 0 | 0 | 0 |
| Handle - Assist Handle at Bunk | S | S | S | - | - | - |
| Lighting - Fluorescent Aisle Lighting | - | - | - | S | S | S |
| Magazine Rack - Magazine Rack on Cab Wall | S | S | S | - | - | - |
| Shades - Pleated Night Shades | S | S | S | - | - | - |
| Shades - Pleated Day/Night Shades | - | - | - | S | S | S |
| Skylight - Living Area | S | S | S | S | S | S |
| FURNITURE | | | | | | |
| Booth Dinette - "Easy Lift" Table with Solid Cherry Edge & Steel Framing for Seat Belts (No steel framing for GT29DB) | S | S | S | S | S | S |
| Chair - Swivel Cocktail Chair - Faux Leather | S | S | - | - | - | - |
| 10 Chair - Euro Recliner w/ Ottoman | - | - | - | S | S | - |
| Pillows - Coordinated Pillows For Living Area | 0 | 0 | 0 | S | S | S |
| Sofa - 62" Easy Bed - Faux Leather | - | - | S | - | - | - |
| 10 Sofa - 68" Easy Bed - Faux Leather | - | - | - | 0 | 0 | S |
| 10 Faux Leather Lounge Dinette ILO Booth Dinette | - | - | - | 0 | 0 | 0 |
| GALLEY | | | | | | |
| Bi-Fold Range Cover | 0 | 0 | 0 | - | - | - |
| Blind - Venetian Blind in Galley | S | S | - | S | S | S |
| 10 Combination 3 Burner Glass Cooktop and Convection Microwave | - | - | - | S | S | S |

10 New for 2010 **S** Standard **0** Option

STANDARDS AND OPTIONS

| | C24 | C25D | C30G | GT275 | GT280B | GT290BS |
|--|-----|------|------|-------|--------|---------|
| GALLEY (continued) | | | | | | |
| Convection Microwave - OTR c/w Light and 110V Vent Fan w/Cooktop and Drawers | - | - | 0 | - | - | - |
| Microwave Oven - OTR c/w Light and Vent Fan | - | - | S | - | - | - |
| Microwave Oven | S | S | - | - | - | - |
| Cooktop - 3 Burner Sealed Range/Oven w/High Output Burner | S | S | S | - | - | - |
| Countertop - Laminate with Radiused Solid Cherry Trim | S | S | S | S | S | S |
| Faucet - Brushed Nickel Galley Faucet with Pull out Sprayer | S | S | S | S | S | S |
| 10 Garbage Can - Recessed in Counter Top w/ Flush Lid | - | - | - | S | S | S |
| Range Hood - Lighted Power Range Hood with Electronic Damper | S | S | - | - | - | - |
| 10 Range Hood - Slim Line | - | - | - | S | S | S |
| Refrigerator - Dometic Double Door LP/Electric 7 Cu. Ft. (w/ reversible laminate inserts) | S | S | S | - | - | - |
| 10 Refrigerator - Dometic Double Door LP/Electric 7 Cu. Ft. w/ Raised Panel Inserts | - | - | - | S | S | S |
| Sink - Stainless Steel c/w Cutting Board Cover | S | S | S | S | S | S |
| LAVATORY | | | | | | |
| Hooks - Robe Hooks in Shower | S | S | S | S | S | S |
| 10 Shower - w/ Glass Door | - | - | - | S | S | S |
| 10 Sink - Acrylic Sink in Lavatory | S | S | S | S | S | S |
| Skylight - in Shower | S | S | S | S | S | S |
| Toilet - Sealand Traveller Lite - China - Foot Flush w/ Sprayer | S | S | S | S | S | S |
| Towel Bar | S | S | S | S | S | S |
| BEDROOM | | | | | | |
| Bedsread - Decorative Bedsread with Toss Cushions in Bedroom | S | S | S | S | S | S |
| Headboard - Fabric Wrapped | - | - | S | S | S | S |
| Mattress - Innerspring 54" x 74" | S | S | - | - | - | - |
| Mattress - Innerspring 60" x 74" | - | - | S | S | S | S |
| Shades - Pleated Night Shades | S | S | S | - | - | - |
| Shades - Pleated Day/ Night/Black Out Shades | - | - | - | S | S | S |
| ENTERTAINMENT | | | | | | |
| CD Changer - 10 Stack CD Changer | 0 | 0 | 0 | 0 | 0 | 0 |
| Entertainment Console - Over Cab with 26" LCD TV | - | - | - | S | S | S |
| Satellite Dish Prewire | 0 | 0 | 0 | 0 | 0 | 0 |
| Satellite Dish - Winegard with Electronic Elevation Sensor | - | - | - | 0 | 0 | 0 |
| Satellite Radio - Prewire including Satellite Antenna (Subscription not Included) | 0 | 0 | 0 | 0 | 0 | 0 |
| Stereo - AM/FM/CD/MP3 Sirius Ready Player in Dash w/Wireless Remote and Auxiliary Input | S | S | S | S | S | S |
| Stereo - AM/FM/DVD/CD/Tuner Home Theater | - | - | - | S | S | S |
| TV - Over Cab Swing out 19" LCD TV DVD Combo | 0 | 0 | 0 | - | - | - |
| TV - 12V DC 19" LCD TV in Bedroom | - | - | - | S | S | S |
| TV Antenna - Roof Top Retractable Antenna c/w Booster | S | S | S | S | S | S |
| HEATING, VENTILATING AND AIR CONDITIONING | | | | | | |
| Air Conditioner - 13,500 BTU Roof Air Conditioner c/w Heat Strip | S | S | S | - | - | - |
| Air Conditioner - Low Profile 13,500 BTU Ducted Roof Air Conditioner c/w Heat Strip | - | - | - | S | S | S |
| Fan - Thermal Controlled Fan (Front Bunk Area) | 0 | 0 | 0 | - | - | - |
| Fan - Thermal Controlled in Bedroom | - | - | 0 | - | - | - |

| | C24 | C25D | C30G | GT275 | GT280B | GT290BS |
|--|-----|------|------|-------|--------|---------|
| HEATING, VENTILATING AND AIR CONDITIONING (continued) | | | | | | |
| Fan - Non Reversible Thermal Controlled Create A Breeze Fan in Galley or Living Area ILO Manual Vent | - | - | - | 0 | 0 | 0 |
| Fan - Reversible Thermal Controlled Create A Breeze Fan in Bedroom ILO Manual Vent | - | - | - | 0 | 0 | 0 |
| Furnace - 35,000 BTU Furnace | S | S | S | S | S | S |
| Rear Auxiliary Heater - Automotive | S | S | S | S | S | S |
| Vent - 12 Volt Power Roof Exhaust in Lavatory | S | S | S | S | S | S |
| Vent - Manual Screened Roof Vent in Galley or Living Area, and Bedroom | S | S | S | S | S | S |
| ELECTRICAL | | | | | | |
| Battery - Second RV Coach Battery (1 Standard) | 0 | 0 | 0 | 0 | 0 | 0 |
| Bi-Directional Isolator Relay Delay (BIRD) Battery Charging | S | S | S | S | S | S |
| Cable TV Hook-up | S | S | S | S | S | S |
| Converter - Power Converter c/w Battery Charger (45 Amp) | S | S | S | S | S | S |
| Cord - 35 Ft Power Cord | S | S | S | - | - | - |
| Cord - 25 Ft. Power Cord | - | - | - | S | S | S |
| Generator - 4.0 KW Onan MicroQuiet® w/Auto Changeover Switch | 0 | 0 | 0 | S | S | S |
| Light - Exterior Roadside Sewer Termination Light - Interior Switched | S | S | S | - | - | - |
| Prewire - for Fantastic Fan In Living and Bedroom Areas (Where Applicable) | S | S | S | S | S | S |
| Prewire - For Rear View Camera | S | S | S | - | - | - |
| Receptacle - GFI Patio 110 V Receptacle | S | S | S | S | S | S |
| Switch - 12 Volt Battery Disconnect (mounted at entrance door), Manual | S | S | S | S | S | S |
| Tray - Slide Out Battery Tray | S | S | S | S | S | S |
| PLUMBING AND LP SYSTEMS | | | | | | |
| Black Tank Flush | S | S | S | S | S | S |
| Exterior Shower with Shut off Valves for Winterizing | S | S | S | S | S | S |
| Monitor Panel - Grey, Black, Fresh Water and Battery Charge | S | S | S | S | S | S |
| Pick Up Kit - Antifreeze Pick Up Kit | S | S | S | S | S | S |
| Valve - Water Heater By-Pass Valve | S | S | S | S | S | S |
| Water Heater - Electronic Ignition LP Water Heater | S | S | S | - | - | - |
| Water Heater - Electronic Ignition LP/ Electric/ Motoraid Water Heater | - | - | - | S | S | S |
| 10 Macerator - RV Sanicon System in Sewer Termination Compartment | - | - | - | 0 | 0 | 0 |
| AWNING PACKAGES (REGENCY C ONLY) | | | | | | |
| Awning - A&E 8500 Patio Awning - w/ Aluminum Weathershield | 0 | 0 | 0 | - | - | - |
| Awning Lengths (shown in feet) | 11 | 12 | 19 | - | - | - |
| Slide Topper Awning | - | 0 | 0 | - | - | - |
| AWNING PACKAGES (REGENCY GT ONLY) | | | | | | |
| Patio Awning - A&E 9000 with Aluminum Weather Shield - Black | - | - | - | S | S | S |
| Awning Lengths (shown in feet) | - | - | - | 13 | 12 | 14 |
| Slide Topper Awning | - | - | - | S | S | S |
| CERTIFICATION | | | | | | |
| CSA Certification | S | S | S | S | S | S |
| RVIA Certification | 0 | 0 | 0 | 0 | 0 | 0 |
| Factory PDI | 0 | 0 | 0 | 0 | 0 | 0 |



Regency GT28DB in Cole Harbour Décor.



Regency GT29DBS in Metropolitan Décor.

Specifications

| REGENCY 2010 | C24 | C25D | C30G | GT27S | GT28DB | GT29DBS |
|----------------------------------|-----------------|-----------------|-----------------|-----------------|-----------------|-----------------|
| GVWR - lbs (kg) | 14500 (6579) | 14500 (6579) | 14500 (6579) | 14500 (6579) | 14500 (6579) | 14500 (6579) |
| UVW - lbs (kg) | 10135 (4598) | 11165 (5066) | 11786 (5348) | 11371 (5159) | 11842 (5373) | 12278 (5571) |
| NCC - lbs (kg) | 4365 (1981) | 3335 (1513) | 2714 (1231) | 3129 (1420) | 2658 (1206) | 2222 (1008) |
| Wheelbase - in (mm) | 158 (4013) | 185 (4699) | 208 (5283) | 185 (4699) | 190 (4826) | 218 (5537) |
| *Length - ft (mm) | 24' 6" (7467) | 26' 9" (8154) | 30' 5" (9271) | 28' 3" (8610) | 28' 9" (8763) | 31' 4" (9550) |
| Width - ft (mm) | 8' 4" (2534) | 8' 4" (2534) | 8' 4" (2534) | 7' 11" (2420) | 7' 11" (2420) | 7' 11" (2420) |
| Height Incl A/C - ft (mm) | 10' 9.5" (3289) | 10' 9.5" (3289) | 10' 9.5" (3289) | 10' 6.5" (3213) | 10' 6.5" (3213) | 10' 6.5" (3213) |
| **Fresh Water Cap - gal (l) | 36 (137) | 36 (137) | 36 (137) | 36 (137) | 36 (137) | 36 (137) |
| Black Holding Tank Cap - gal (l) | 32 (122) | 32 (122) | 32 (122) | 32 (122) | 32 (122) | 32 (122) |
| Grey Holding Tank Cap - gal (l) | 38 (145) | 38 (145) | 32 (122) | 32 (122) | 32 (122) | 32 (122) |
| Fuel Cap - gal (l) | 55 (209) | 55 (209) | 55 (209) | 55 (209) | 55 (209) | 55 (209) |
| Propane Cap - gal (l) | 17.5 (66) | 17.5 (66) | 17.5 (66) | 17.5 (66) | 17.5 (66) | 17.5 (66) |

*Add 8" to total length for spare tire on C models; add 7" on GT models

**Includes 6 gal Water Heater

All Capacities in U.S. Gallons

GVWR (GROSS VEHICLE WEIGHT RATING)

The maximum permissible weight of this motorhome. The GVWR is equal to or greater than the sum of the unloaded vehicle weight (UVW) plus the net carrying capacity (NCC).

UVW (UNLOADED VEHICLE WEIGHT)

The weight of the motorhome as built at the factory. The UVW does not include cargo, fresh water, LP gas, factory or dealer installed accessories.

NCC (NET CARRYING CAPACITY)

The maximum weight of personal belongings, food, fresh water, LP gas, tools, tongue weight of towed vehicle, factory and dealer installed accessories, etc., that can be carried by this motorhome. (NCC is equal to or less than GVWR minus UVW.) Please see your dealer for weights of factory installed options.

Triple E Recreational Vehicles P.O. Box 1230, Winkler, Manitoba, Canada R6W 4C4 Telephone: (204) 325-4361 Fax: (204) 325-5241

Triple E Recreational Vehicles are designed and built to meet or surpass CSA-RVIA standards covering electrical services, gas services, plumbing services and vehicular safety. It is the responsibility of the owner to be familiar with the road usage laws of the states in which you travel. Product improvement is a continuing process at Triple E Recreational Vehicles. We reserve the right to change specifications on any or all products without prior notice; errors and omissions excepted. Triple E Recreational Vehicles is under no obligation to undertake modification to units manufactured prior to changes on specifications. Brochure pictures may be shown with optional equipment. Colours may not be exactly as shown due to the printing process. Please see your dealer for specific colours.



www.tripleerv.com

