



CrossRoads

CRUISER

CrossRoads

CTX

CRUISER CTX

TRAVEL TRAILERS & FIFTH WHEELS



1/2 TON
SERIES



PROVIDING YOU WITH MAXIMUM TOWABILITY
with Tandem Towing

STILL THE LIGHTEST WEIGHT MID PROFILE — BUILT FOR THE LONG HAUL



CT30QBX Dinette and sofa shown in Sangria décor

Cruiser CTX Travel Trailers and Fifth Wheels are engineered for easy towing. Our six-sided aluminum framing provides a lightweight super structure and reduces the weight to provide more towing options. The fifth wheels feature a tandem tow option which boast a 2" receiver built into the frame. CTX models are lightweight without sacrificing livability.

DESIGNER INTERIORS WITH TUSCAN MAPLE FINISH



CT30QBX Kitchen



CF27RLX Bedroom with double wardrobe

CRUISER CTX WARRANTY

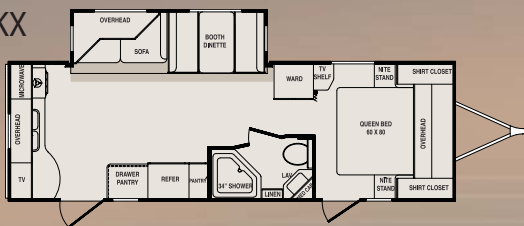
The best warranty in the industry. For details, please visit our web site at www.crossroadsrv.com. We invite you to compare our quality, value, service program and 2+5 Year Warranty plan with those of our competition. You'll find we are unsurpassed in all four.



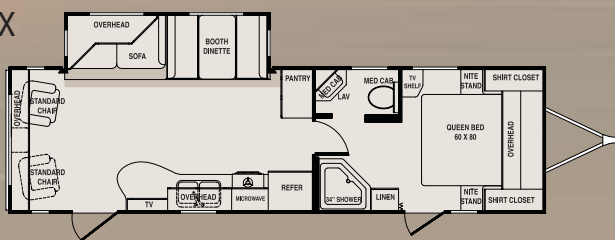
CF27RLX Bathroom vanity

TRAVEL TRAILERS

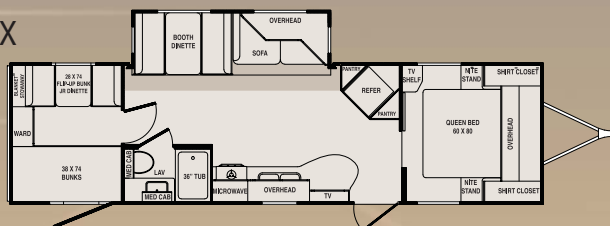
CT26RKX



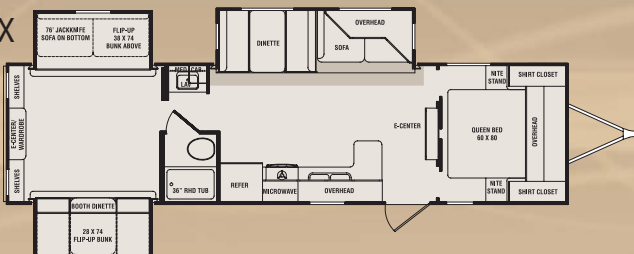
CT29RLX



CT30QBX

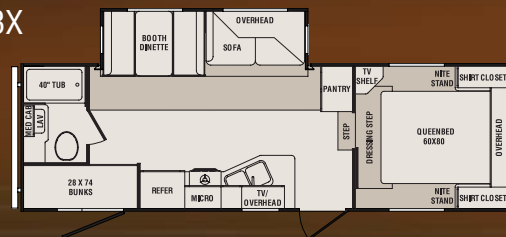


CT32KSX

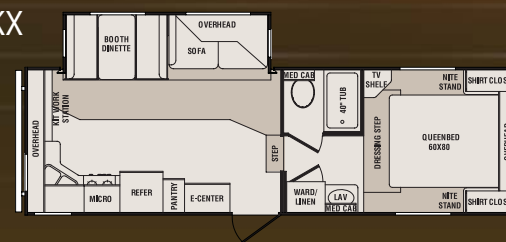


TANDEM TOW FIFTH WHEELS

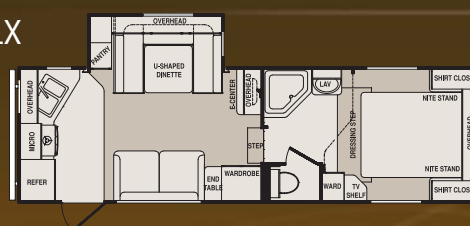
CF25RBX



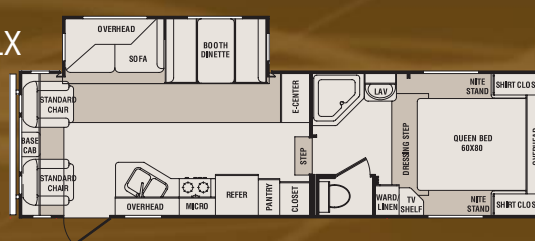
CF26RKX



CF26ULX



CF27RLX



(Standard)



(Standard)



(Available)

Tanks

- Fresh water capacity: 58 gallons
- Black water capacity: 40 gallons
- Grey/galley capacity: 80 gallons
(40 gallons on 26ULX, 29RLX, 30QBX, 32KSX)

| SPECIFICATIONS | CT26RKX | CT29RLX | CT30QBX | CT32KSX | CF25RBX | CF26RKX | CF26ULX | CF27RLX |
|---------------------|-------------|-------------|-------------|------------|-------------|-------------|-------------|-------------|
| Dry Weight | 6012 | 6868 | 6874 | 8038 | 6539 | 6762 | 6692 | 7102 |
| Carrying Capacity | 4640 | 3762 | 3680 | 2594 | 4734 | 4405 | 4477 | 4075 |
| Hitch Weight | 860 | 838 | 762 | 845 | 1642 | 1536 | 1538 | 1546 |
| Axle Weight | 5152 | 6030 | 6112 | 7193 | 4897 | 5226 | 5154 | 5556 |
| Exterior Length | 29' 7" | 33' 5" | 34' 2" | 35' 11" | 27' 3" | 27' 6" | 27' 11" | 29' 5" |
| Ext. Height with AC | 11' 0" | 11' 0" | 11' 0" | 11' 2" | 12' 0" | 11' 10" | 11' 10" | 11' 8" |
| Tires | 225/75R15 D | 225/75R15 D | 225/75R15 D | 225/75R15D | 225/75R15 D | 225/75R15 D | 225/75R15 D | 225/75R15 D |

Standards stated throughout this brochure are partial lists only. See your dealer or visit www.crossroadsrv.com for a complete listing.

1/2 TON
SERIES

Living Room Standards

- Booth dinette with drawer storage underneath
- 64" Jackknife style sofa
- Flush floor slide-out with large dinette window
- Lighted entertainment center
- LCD TV mounting bracket
- Satellite/cable hook-up
- 60 lb ball bearing drawer guides
- 12 volt Dolby digital surround system (MP3/iPod plug in)
- Colored day/night shades
- Lounge chair with foot stool (varies by floor plan)

Kitchen Standards

- 6 cu ft Double door refrigerator
- Self-igniting 22" chef range with 3 burners, cover, hood & microwave
- Formica self-edge countertop
- Solid wood drawer fronts with metal glides
- Wood panel switch key cabinet
- Knife rack

Bedroom Standards

- Deluxe innerspring mattress
- Full 60x80 queen bed
- Lift-up bed with gas struts for extra storage
- 2 Night stands
- Colored day/night shades

Bathroom Standards

- 40" ABS tub/shower with surround (some models 36")
- Laundry chute to cargo storage
- Skylight in tub/shower
- Water heater bypass and EZ winterize kit
- 6 Gallon gas/electric water heater with DSI
- Porcelain foot flush toilet

Construction Standards

- 3/8" Plywood roof decking
- 16" OC aluminum truss roof rafters
- R-27 Fiberglass roof insulation and R-28 floor insulation**
- 30,000 BTU floor ducted furnace
- 16" OC aluminum framing for sidewalls, end walls, floor, roof and slide rooms
- Secure Stance axles
- R-15 Sidewall fiberglass insulation**

Dry & hitch weight based on standard equipment only. Carrying capacity reduced to reflect maximum available options per unit. Standards, options & specifications subject to change without notice. 03/10 © 2010 CrossRoads RV

- 2 Layers of Luan board - staggered for seamless walls
- Lamilux fiberglass exterior for easy maintenance
- 5/8" Lightweight tongue and groove plywood floor decking
- Residential grade carpet with 1/2" foam carpet pad
- Linoleum bathroom floor
- Electric slide system(s) with individual room controls
- 15" Tires with white spoked rims
- 5,200 lb Axles
- Fully enclosed, insulated underbelly with radiant heat

Exterior Standards

- Tinted glass windows
- Extra large capacity cargo storage
- 30" Radius entry door with screen
- Lighted triple entry step
- Dual 30 lb LP tanks enclosed
- Aluminum bumper cover
- EZ lube hubs
- Heated enclosed gate valves
- Water management utility compartment

Enhancement Package Standards

- Ducted 13,500 BTU A/C
- Patio awning
- Tuscan raised panel arch upper and lower cabinet doors
- Roof ladder
- TV antenna
- AM/FM/CD/DVD player/MP3 and iPod plug-in
- 7 Speaker surround sound system
- Black tank flush
- Swing-out entry assist handle
- 65 Amp converter
- Outdoor speakers
- Black formed refrigerator front
- LP quick disconnect

THOR
INDUSTRIES, INC.

Thor Industries' strong financial position and industry leadership are your assurance that we will be here to serve you for years to come.

your local dealer

Popular Optional Features

- Spare tire, carrier and cover
- Chrome center caps
- Rear leveling jacks
- Aluminum rims
- 15,000 BTU A/C IPO 13.5 A/C
- Polar Tech upgrade insulation
- Outside shower
- LCD TV
- Hide-a-bed sofa with folding innerspring mattress
- Free-standing table and 4 chairs (N/A 26UL)
- Bi-fold shower door
- Electric awning
- 30" stabilizer jacks
- Safety glass



CrossRoads

888-226-7496
www.crossroadsrv.com



The company conserving today
to protect tomorrow.

facebook

twitter



**R-values based with POLARTEC upgrade insulation package. All R-values are approximated using industry resources and are subject to change without notice.



CONSTRUCTION STANDARDS

1. One-piece, rolled-edge rubber roof with 12 year warranty
2. 3/8" Plywood roof decking
3. 16" OC Aluminum truss roof rafters and tube floor joists
4. R-14 Fiberglass roof and floor insulation
5. Aluminum radius roof transition wrap (FW only)
6. Full fiberglass front cap (FW only)
7. 13,500 BTU ducted A/C*
• 30,000 BTU floor ducted furnace
8. Aluminum tube 16" OC studs for sidewalls, endwalls and slide rooms
9. Thermo-Foil
(PolarTec Upgrade Insulation Package - optional)
10. R-7 Sidewall fiberglass insulation

11. (2) Layers of Luan board - staggered for seamless walls
12. Lamilux fiberglass exterior for easy maintenance
13. 8" Steel I-beam frame
14. 5/8" Lightweight tongue and groove plywood floor decking
15. Residential grade carpet with 1/2" foam carpet pad
16. Linoleum bathroom floor
17. Power front jacks (FW only)
18. 15" Tires with white spoked rims
(aluminum option shown)
19. 5,200 lb Axles (fifth wheels and travel trailers) with Secure Stance axles
20. Fully enclosed, insulated underbelly with radiant heat

EXTERIOR STANDARDS

21. Tinted glass windows
22. Scare light (door side)
23. Extended pin box (FW only)
24. Swing-out entry assist handle *
25. Roof ladder *
26. Extra large capacity cargo storage
27. Sunchaser patio awning *
28. 30" Radius entry door with screen
29. Triple entry step

30. Dual 30 lb LP tanks
31. Aluminum bumper cover

EZ lube hubs
Black tank flush *
Enclosed gate valves
Electric slide system

* Included in Enhancement Package
**R-values based with POLARTEC upgrade insulation package.
All R-values are approximated using industry resources
and are subject to change without notice.

CRUISER CTX DÉCORS



Thyme

(shown with optional free standing table and chairs)



Persian Sand



Sangria

(shown with optional free standing table and chairs)



Ocean

(shown with optional free standing table and chairs)