



# CRUISER

CrossRoads

CRUISER FIFTH WHEELS



The company conserving today  
to protect tomorrow.



BUILT FOR THE LONG HAUL





CF 32MK Shown with Persian Sand décor and available free standing table and chairs

The Cruiser's signature interior is known for its spacious comfort and easy-living features. Tuscan maple finish accented with designer fabrics, comfortable lounge chairs, and numerous amenities create beautiful living quarters that rival much costlier units. With sturdy, lightweight aluminum construction, most Cruiser fifth wheels can be towed with a half-ton pick-up truck.





CF30SK Kitchen

## DESIGNER INTERIORS WITH TUSCAN MAPLE FINISH

## CRUISER WARRANTY

The best warranty in the industry. For details, please visit our web site at [www.crossroadsrv.com](http://www.crossroadsrv.com). We invite you to compare our quality, value, service program and 2+5 Year Warranty plan with those of our competition. You'll find we are unsurpassed in all four.



CF30SK, 30ES, 31RK, 31RE, 32BL, 32CK and 33LF Bedroom slide-out



CF32MK Available fireplace and desk

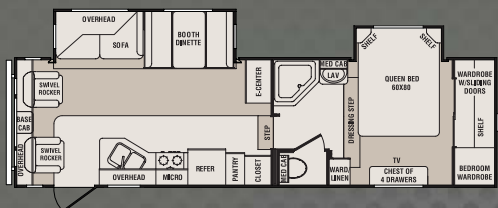


CF32BL Bathroom vanity

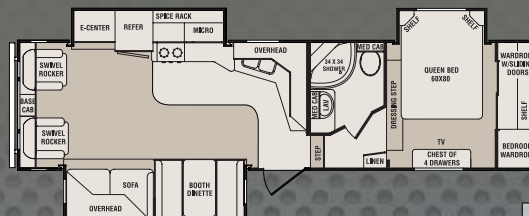


## FIFTH WHEEL FLOOR PLANS

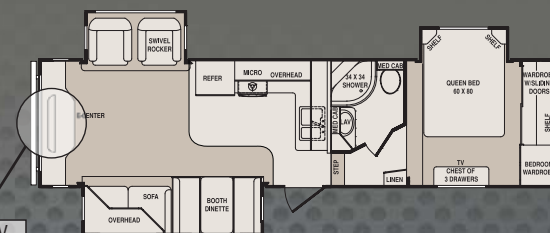
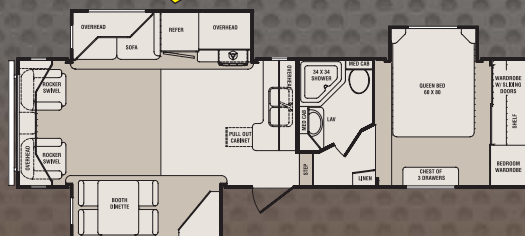
CF28RL



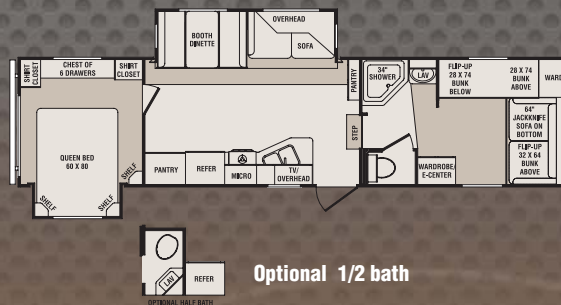
CF30SK



CF31RE

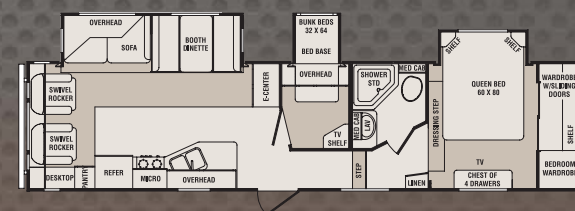
LCD TV  
STANDARDCF30ES **NEW**

CF31QB

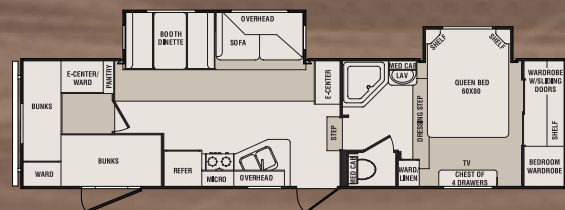
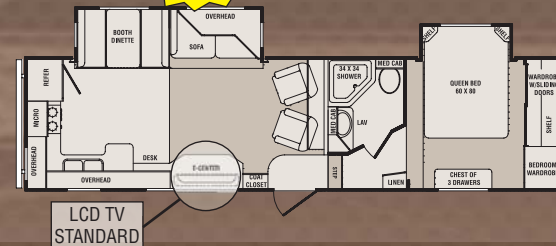
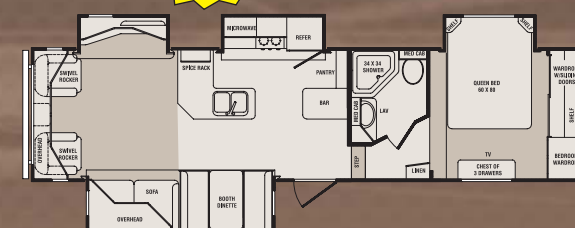


Optional 1/2 bath

CF32BL



CF30QB

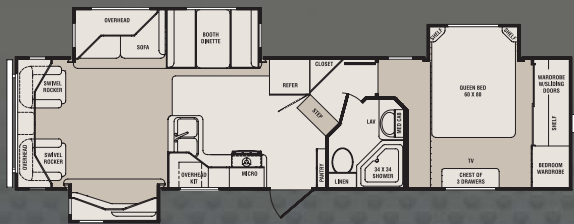
CF31RK **NEW**LCD TV  
STANDARDCF32CK **NEW**

\*1/2 Ton Series classification based on 2010 Trailer Life Towing Guide.

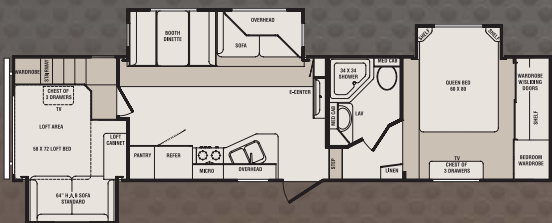
## Specifications

|                          | CF28RL    | CF30ES    | CF30QB    | CF30SK    | CF31QB    | CF31RK    | CF31RE    | CF32BL    | CF32CK    |
|--------------------------|-----------|-----------|-----------|-----------|-----------|-----------|-----------|-----------|-----------|
| Dry Weight               | 7617      | 8568      | 8035      | 8211      | 7930      | 7981      | 7969      | 8556      | 8847      |
| Carrying Capacity        | 3670      | 2945      | 3436      | 3062      | 3435      | 3204      | 3246      | 2973      | 2599      |
| Hitch Weight             | 1666      | 1882      | 1840      | 1642      | 1734      | 1554      | 1584      | 1898      | 1852      |
| Axle Weight              | 5961      | 6686      | 6195      | 6569      | 6196      | 6427      | 6385      | 6658      | 6995      |
| Exterior Length          | 30' 11"   | 32' 2"    | 34' 3"    | 32' 10"   | 34' 11"   | 32' 11"   | 32' 11"   | 34' 11"   | 33' 11"   |
| Exterior Height with A/C | 11' 8"    | 11' 10"   | 12' 4"    | 11' 10"   | 12' 2"    | 11' 8"    | 11' 8"    | 12' 7"    | 12' 7"    |
| Tire Sizes               | 225/75R15 | 225/75R15 | 225/75R15 | 225/75R15 | 225/75R15 | 225/75R15 | 225/75R15 | 225/75R15 | 225/75R15 |

## CF32MK **NEW**



## CF33LF Fifth Wheel Lofted Model



## Patriot and Provincial Edition Package

(includes Must Have Package & only available on 28RL, 30SK, 31RE, & 32CK)

- 50 Amp service with bedroom A/C prep
- Mobile comfort pillow top mattress
- Roto Flex pin box
- Power leveling jacks - rear
- PolarTec upgrade insulation package
- Additional graphics
- Corian counter tops in kitchen area
- Stainless steel sink
- Sink covers
- 16" Tires on aluminum rims
- Fiberglass Cap
- Freestanding Table and Chairs
- Lounge Chair & Ottoman
- 10 Gallon Water Heater
- 8 Cu. ft. refrigerator IPO 6 cu. ft.
- Electric awning
- Outside shower
- Spare tire and carrier
- 12 Volt ceiling fan
- Gel glass
- HAB Sofa with inner spring mattress
- HAB Sofa with air mattress (optional)

## DÉCOR CHOICES

### Persian Sand

Shown on page 2



### Thyme



### Ocean



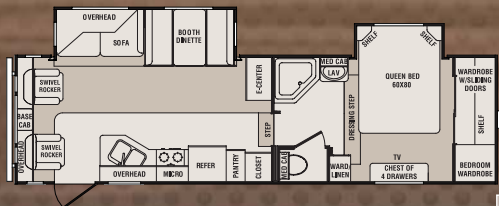
### Sangria

## Tanks

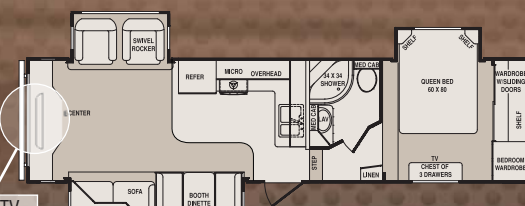
- Fresh water capacity: 58 gallons
- Black water capacity: 40 gallons
- Grey/galley capacity: 80 gallons

## PATRIOT/PROVINCIAL FLOOR PLANS

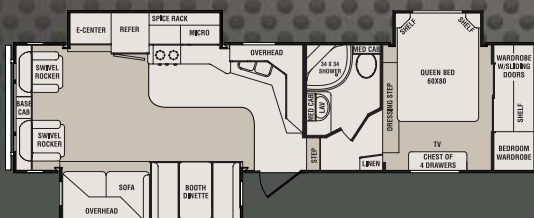
### CF28RLP



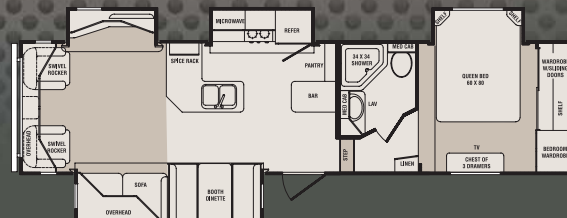
### CF31REP



### CF30SKP



### CF32CKP



LCD TV STANDARD

## CF32MK CF33LF

|           |             |
|-----------|-------------|
| 8532      | 9117        |
| 2905      | 2604        |
| 1806      | 2136        |
| 6726      | 6981        |
| 33' 11"   | 34' 11"     |
| 12' 2"    | 12' 7"      |
| 225/75R15 | 225/75R15 D |



# CRUISER FEATURES



Pantry storage for coats and provisions



Skylight with shade (standard in kitchen)



Outlet at awning with switch



Our aluminum floors have 16" OC aluminum studs and can hold **50 – 42 lb. tires** for grand total of **2,100 pounds!**



Full extension ball bearing drawer guides



Lighted entry step



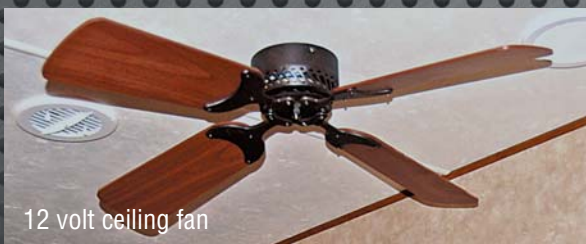
Day/night shades



DVD/CD/MP3 surround



Extended counter space – up to 22 1/2" (30ES only)



12 volt ceiling fan



Outside speakers



Flip up seat storage



Central control panel



CrossRoads



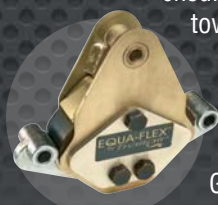
## Dependability that Lasts

What our competitors don't want you to see! Our aluminum frames are bolted not welded. This makes them much stronger and gives them a longer life. Poorly welded frames come apart and are costly to fix.

Standards stated throughout are partial lists only. See your dealer or [www.crossroadsrv.com](http://www.crossroadsrv.com) for a complete listing.



Trailair's Equa-Flex™ Equalizer suspension ensures a smoother ride, more stable towing and improved coach and vehicle safety.



On broken pavement at 55mph, Equa-Flex™ reduced G-force up to 89% (360Hz)\* at the trailer frame. It's the ultimate rough road remover! (Standard)

## CONSTRUCTION STANDARDS

1. One-piece, rolled-edge rubber roof with 12 year warranty
2. 3/8" Plywood roof decking
3. 16" OC Aluminum truss roof rafters and tube floor joists
4. R-27 Fiberglass roof and R-28 floor insulation\*
5. Aluminum radius roof transition wrap
6. Full fiberglass front cap
7. 13,500 BTU ducted A/C • 30,000 BTU floor ducted furnace
8. Aluminum tube 16" OC studs for sidewalls, endwalls and slide rooms
9. Thermo-Foil (PolarTec Upgrade Insulation Package - optional)
10. R-15 Sidewall fiberglass insulation\*
11. 2 Layers of Luan board - staggered for seamless walls
12. Lamilux fiberglass exterior for easy maintenance
13. 8" Steel I-beam frame (except CF32CK, CF33LF and CF32BL have 10" Steel I-beam frame)
14. 5/8" Lightweight tongue and groove plywood floor decking
15. Residential grade carpet with 1/2" foam carpet pad
16. Linoleum bathroom floor
17. Power front jacks
18. Electric slide system(s) with individual room controls
19. 15" Tires with white spoked rims (aluminum option shown)
20. 5,200 lb Axles
21. Fully enclosed, insulated underbelly with radiant heat

## EXTERIOR STANDARDS

22. Tinted glass windows
  23. Scare light
  24. Extended pin box
  25. Swing-out entry assist handle
  26. Roof ladder
  27. Extra large capacity cargo storage
  28. Sunchaser patio awning
  29. 30" Radius entry door with screen
  30. Triple entry step
  31. Dual 30 lb LP tanks
  32. Aluminum bumper cover
  33. Back-up mirror
- EZ lube hubs  
Black tank flush  
Enclosed gate valves



\*R-values based with POLARTEC upgrade insulation package. All R-values are approximated using industry resources and are subject to change without notice.



## Living Room Standards

- Booth dinette with drawer storage underneath
- Hide-a-bed sofa with inner spring mattress
- Flush floor slide-out with large dinette window
- Lighted entertainment center
- LCD TV mounting bracket
- Satellite/cable hook-up
- 60 lb ball bearing drawer guides
- 12 volt Dolby digital surround system (MP3/iPod plug in)
- Colored day/night shades
- Lounge chair with foot stool (varies by floor plan)

## Kitchen Standards

- 6 cu ft Double door refrigerator
- Self-igniting 22" chef range with 3 burners, cover, hood & microwave
- Formica self-edge countertop
- Solid wood drawer fronts with full extension ball bearing drawer guides
- Wood panel switch key cabinet
- Knife rack
- Skylight

## Bedroom Standards

- Deluxe innerspring mattress
- Full 60x80 queen bed
- Lift-up bed with gas struts for extra storage
- 2 Night stands
- Spacious closets
- TV shelf and hook-up
- LCD flip down TV bracket
- Extra tall chest of drawers
- Colored day/night shades

## Bathroom Standards

- Corner shower with glass doors in double and triple slide
- Bathroom storage (varies by model)
- Laundry chute to cargo storage (varies by model)
- Skylight in tub/shower
- Water heater bypass and EZ winterize kit
- 6 Gallon gas/electric water heater with DSI
- Porcelain foot flush toilet

## Construction Standards

- One-piece, rolled-edge rubber roof with 12 yr warranty
- 3/8" Plywood roof decking
- 16" OC Aluminum truss roof rafters and tube floor joists
- R-14 Fiberglass roof and floor insulation
- Aluminum radius roof transition wrap
- Full fiberglass front cap
- 30,000 BTU floor ducted furnace
- Aluminum tube 16" OC studs for sidewalls, endwalls and slide rooms

- R-7 Sidewall fiberglass insulation
- 2 Layers of Luan board - staggered for seamless walls
- Lamilux fiberglass exterior for easy maintenance
- 8" Steel I-beam frame (except CF32BL 10" Steel I-beam frame)
- 5/8" Lightweight tongue and groove plywood floor decking
- Residential grade carpet with 1/2" foam carpet pad
- Linoleum bathroom floor
- Power front jacks
- Electric slide system(s) with individual room controls
- 15" Tires with white spoked rims (aluminum option shown)
- 5,200 lb Axles
- Fully enclosed, insulated underbelly with radiant heat

## Exterior Standards

- Tinted glass windows
- Scare light
- Extended pin box
- Extra large capacity cargo storage
- 30" Radius entry door with screen
- Triple entry step
- Dual 30 lb LP tanks
- Aluminum bumper cover
- EZ lube hubs
- Heated enclosed gate valves
- Water management utility compartment
- Gel coat front cap with enhanced turning radius
- Backup mirror on fifth wheels

## Enhancement Package Standards

- Ducted 13,500 BTU A/C
- Patio awning
- Tuscan raised panel arch upper and lower cabinet doors
- Roof ladder
- TV antenna
- AM/FM/CD/DVD player/MP3 and iPod plug in
- Dolby digital surround sound
- Black tank flush
- Swing-out entry assist handle
- 65 Amp converter
- Outdoor speakers
- Black formed refrigerator front
- LP quick disconnect
- Equa-Flex™

your local dealer

## Popular Optional Features

- Slide-out awnings
- Rain sensor fans
- Spare tire and carrier
- Chrome center caps
- Rear leveling jacks
- PolarTec upgrade insulation package
- Aluminum rims
- 15,000 BTU A/C
- 10 Gallon gas/electric water heater with DSI
- Outside shower
- LCD TV
- Air mattress hide-a-bed sofa
- Free-standing table and 4 chairs
- Tuscan refrigerator front
- 8 cu ft Double door refrigerator
- Sink covers
- Bi-fold shower door
- 12 volt battery
- Electric awning
- Fireplace w/A & B switch (varies by floor plan)
- 30" stabilizer jacks
- Gel glass
- Safety glass
- 12 volt ceiling fan
- 16" Tires on aluminum rims



CrossRoads

888-226-7496

www.crossroadsrv.com



The company conserving today to protect tomorrow.

facebook

twitter

THOR  
INDUSTRIES, INC.

Thor Industries' strong financial position and industry leadership are your assurance that we will be here to serve you for years to come.