

TRAIL CRUISER

R-VISION



2011 Trail-Cruiser R-Vision

Easy to Tow | Easy to Cruise

800.282.4654
www.trail-lite.com



TC 29BH in Moon Beam

▲ A large U-shaped dinette (TC 29BH) with round drop leaf table offers ample seating space.



◀ Inviting decors, beautiful wood and spacious innovative floorplans abound in all 8 Trail-Cruiser floorplans.

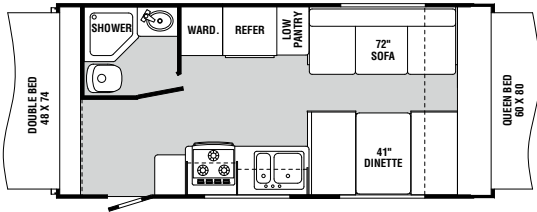
2011 Specifications	TC 19E	TC 21E	TC 23QB	TC 24RS	TC 25BH	TC 25QB	TC 26RK	TC 29BH
Weights								
Gross Vehicle Weight Rating	6,160	6,160	6,160	6,160	6,160	6,160	6,160	7,700
Dry Hitch Weight (Appr.)	TBD	497	341	332	TBD	TBD	566	407
Dry Axle(s) Weight (Appr.)	TBD	2,794	3,396	3,460	TBD	TBD	3,880	4,668
Dry Unloaded Vehicle Weight (Appr.)	TBD	3,291	3,737	3,792	TBD	TBD	4,446	5,075
Net Carrying Capacity (NCC)	TBD	2,869	2,423	2,368	TBD	TBD	1,714	2,625
Tire Size	14"	14"	14"	14"	TBD	14"	14"	14"
Tire Load Range	C	C	C	C	TBD	C	C	C
Measurements								
Overall Length	21'-1"	22'-3"	23'-9"	25'-6"	TBD	26'-11"	27'-7"	32'-11"
Overall Height (Including A/C)	TBD	TBD	TBD	TBD	TBD	TBD	TBD	TBD
Exterior Width (w/o Awning)	8'-0"	8'-0"	8'-0"	8'-0"	8'-0"	8'-0"	8'-0"	8'-0"
Tank Capacities								
Water Heater	6 Gal.	6 Gal.	6 Gal.	6 Gal.	6 Gal.	6 Gal.	6 Gal.	6 Gal.
Grey Tank	30 Gal.	30 Gal.	30 Gal.	30 Gal.	30 Gal.	30 Gal.	30 Gal.	30 Gal.
Black Tank	30 Gal.	30 Gal.	30 Gal.	30 Gal.	30 Gal.	30 Gal.	30 Gal.	30 Gal.
Fresh Tank	30 Gal.	30 Gal.	30 Gal.	30 Gal.	30 Gal.	30 Gal.	30 Gal.	30 Gal.
Two 20 lb. L.P. Tanks with Automatic Changeover	S	S	S	S	S	S	S	S

* Weights may vary by options. ** Tank manufacturer's listed water capacity (WC). Actual filled LP capacity is 80% of listing due to safety shut off required on tank.

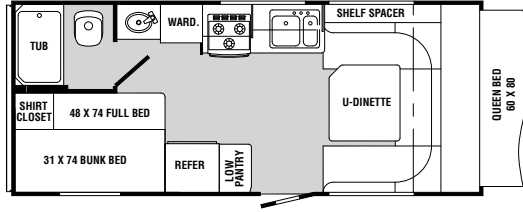
FLOORPLANS

EXPANDABLES

TC19E

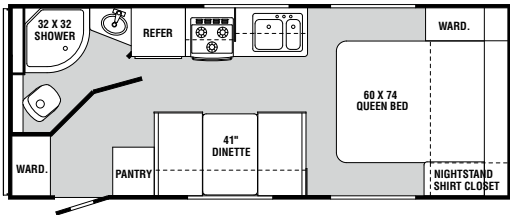


TC21E

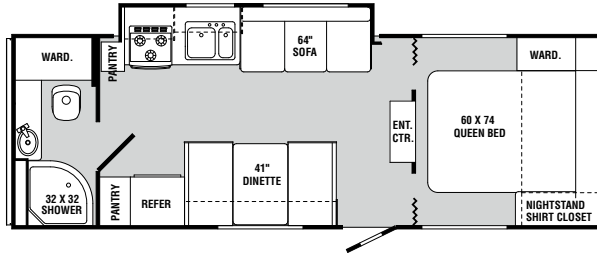


TRAVEL TRAILERS

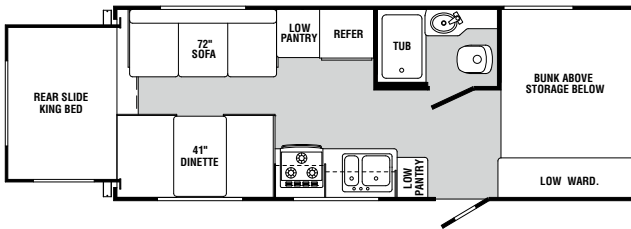
TC23QB



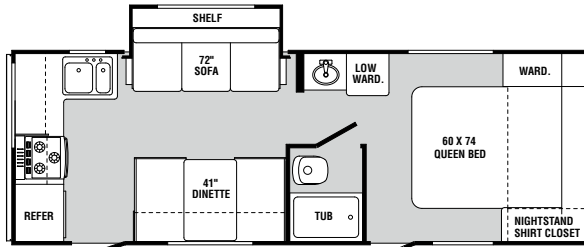
TC25QB



TC24RS

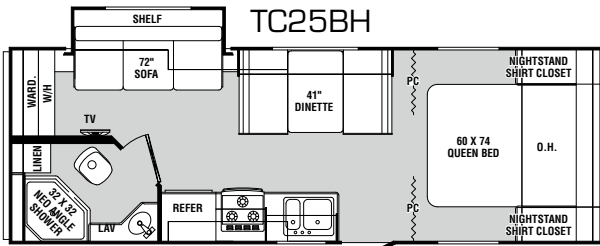


TC26RK

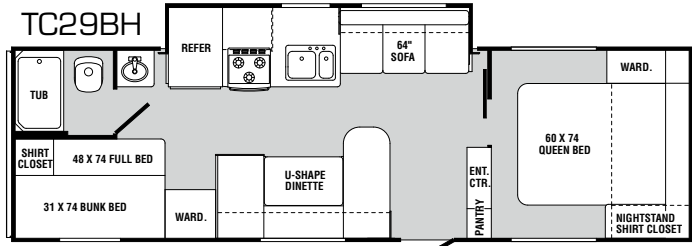


(OPT. DOOR)

TC25BH



TC29BH



DECORS

DYNAMITE



HUNTINGTON PLACE



MOON BEAM



TAMARACK



BODY CONSTRUCTION

- I-Beam Frame Powder Coated
- Frame Mounted Entry Step (Self Storing Single Step)
- Tandem Axles w/10" Electric Brakes
- Ez-Lube Hubs (2)
- Stabilizer Jacks (4) *(Std. on TC-19E, TC-21E)*
- Galvanized Wheel Wells
- Laminated Flooring; Two Layers Luan, Aluminum Frame w/Foam, Luan, and Darco 2"
- Heated and Enclosed Underbelly
- 1.5"; Laminated Sidewall; Fiberglass Skin, Luan, Aluminum Frame w/Foam, and Wallboard 1.5"
- Laminated Roof; Seamless Rubber Roof, Luan, Aluminum Frame w/Foam, and Ceiling Board 2" *(Std. on TC-19E, TC-21E)*
- Roof; Seamless Rubber w/5" Wood Trusses, and Fiberglass Insulation. Walkable Deck, w/Ducted Air Conditioning *(N/A on TC-19E, TC-21E)*
- Norco Slide-out System Sidewall *(Std. on TC-25BH, TC-25QB, TC-26RK, TC-29BH)*
- Radius Exterior Storage Door w/Door Catch
- Slide-out Rear Wall *(Std. on TC-24RS)*
- 60x80 Expandable Tent (Attached Inside C-Channel To Prevent Water Entry) Continuous Piano Hinge, Key Lock, Compression Clamps Latches, 6" Bunk End Cushions, and Pre-wire for Bunk Lights *(Std. on TC-19E, TC-21E)*
- Rain Gutters w/Downspouts Above Slide-outs
- Radius Front Wall Profile
- L.P. Tank Cover
- Molded ABS Fender Skirts
- Smooth Fiberglass Exterior Rear Wall
- Vinyl Exterior Graphics

APPLIANCES AND ACCESSORIES

- Double Door 6 cu. ft. Refrigerator
- Wedgewood 3-Burner Cooktop
- Lighted Powered Range Hood
- Pre-wire for Microwave
- TV Prep Living Area. Mounting Bracket Installed when Necessary
- Systems Monitor Panel - Battery Levels, Holding Tank Levels & Water Pump Switch

INTERIOR

- Newport Cherry Cabinetry
- Square Frame Flat Panel Cabinet Doors w/Mortise and Tenon Corners
- Wood Grain Panel Refrigerator Insert Doors
- Wallpaper Border Main Living Area, Dinette, Kitchen and Bath
- Kitchen Soffit Lights
- Decorative Slide-out Fascia *(Std. on TC-25BH, TC-25QB, TC-26RK, TC-29BH)*
- Linoleum Throughout
- Wood Grain Bath Door
- Fabric Close-off Curtain to Bedroom Main Floor of Coach *(N/A on TC-19E, TC-24RS, TC-25QB, TC-29BH)*

- Fabric Close-off Curtain to Bedroom in Expandable or Rear Wall Slide-out Location *(Std. on TC-19E, TC-21E, TC-24RS)*
- Fabric Close-off Curtain Bunks *(Std. on TC-24RS, TC-25BH, TC-29BH)*
- Folding Door Close Off to Bedroom *(Std. on TC-25QB, TC-29BH)*
- Upper Cabinet Doors on Shirt Closets on Each Side of Bed to Have Mirror Doors *(N/A on TC-19E, TC-21E, TC-24RS)*
- Bedspread w/Reverse Shams *(N/A on TC-19E, TC-24RS)*
- Fabric Headboard *(N/A on TC-19E, TC-21E, TC-24RS)*
- Mini Blinds Throughout (Except Bunk Location)

FURNITURE

- Queen Bed *(N/A on TC-24RS)*
- Full Bed *(Std. on TC-19E)*
- Bunk Bed w/Vinyl Back Upper Only *(Std. on TC-21E, TC-24RS)*
- King Bed *(Std. on TC-24RS)*
- Expandable Tent (Attached Inside C-Channel to Prevent Water Entry) Continuous Piano Hinge, Key Lock, Compression Clamps Latches, 6" Bunk End Cushions, and Pre-wire for Bunk Lights *(Std. on TC-19E, TC-21E)*
- Fabric Covered Fold Down Sleeper Sofa *(N/A on TC-21E, TC-23QB)*
- Booth Dinette w/Fabric Cushions w/Vinyl Backs *(N/A on TC-21E, TC-29BH)*
- Patio Side U-shape Booth Dinette w/Fabric Cushions w/Vinyl Backs *(Std. on TC-29BH)*
- Front U-shape Booth Dinette w/Fabric Cushions w/Vinyl Backs *(Std. on TC-21E)*

ELECTRICAL SYSTEMS AND LIGHTS

- Electrical Management System - 30 Amp
- Detachable 30 Amp Power Cord
- A-frame Battery Rack
- 55 Amp Converter w/Charger
- Porch Light / Security Light
- Patio Side 120V Exterior Recept
- Patio Side Cable TV Hook-up
- Double Pancake All Ceiling Locations
- Kitchen Soffit Lights *(N/A on TC-29BH)*
- Interior Ceiling Light Switches
- Single Pancake Lights at Bunk Locations *(Std. on TC-21E, TC-24RS)*

PLUMBING AND LP SYSTEMS

- Platinum Double Bowl Kitchen Sink w/Hi-rise Goose Neck Faucet
- 6-Gallon L.P. Gas Water Heater
- Water Heater By-pass
- Two 20 lb. L.P. Tanks w/Automatic Changeover w/Cover
- Rotocast Holding Tanks
- Rotocast Fresh Tank

HEATING, VENTS AND AIR CONDITIONING

- 18M BTU Hydro Flame Electronic Ignition Furnace *(Std. on TC-19E)*

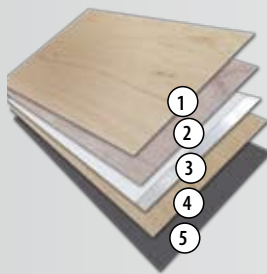
- 20M BTU Hydro Flame Electronic Ignition Furnace (No Door) *(N/A on TC-19E, TC-29BH)*
- 30M BTU Hydro Flame Electronic Ignition Furnace *(Std. on TC-29BH)*
- Gas Line Hook-up at Front of Coach

WINDOWS, DOORS AND AWNINGS

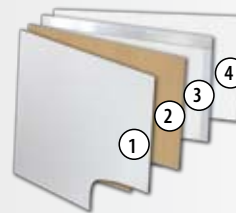
- Radius Windows
- Safety Glass Windows
- Galley Window
- Radius Entry Door w/Window, Dead Bolt, and Screen Door
- Skylight in Bathroom
- Exterior Entry Assist Entry Door Handle

OPTIONS

- Aluminum Wheels (4)
- Spare Tire w/Cover
- Equa-Flex Axles (2)
- Electric Tongue Jack w/Light
- Front Diamond Plating
- Rear Ladder *(N/A on TC-19E, TC-24RS, TC-26RK)*
- Stabilizer Jacks (4) (Forced Pkg. Item to Optional Except Expandables) *(N/A on TC-19E, TC-21E)*
- Frame Mounted Entry Steps (Self Storing Double Steps) Double Step (Forced Pkg. Item to Optional)
- Exterior Storage Drawer
- Wedgewood Oven w/3-Burner Cooktop
- Microwave
- Sink Cover (1) (Forced Pkg. Item to Optional)
- Bi-fold Range Cover (Forced Pkg. Item to Optional)
- 5.1 Home Theater w/DVD Player, 5 Interior Speakers, 2 Exterior Speakers, TV Antenna w/Cable Hook-ups (Forced Pkg. Item to Optional) *(N/A on TC-29BH)*
- 19" LCD TV Loose Ship *(N/A on TC-25QB, TC-26RK)*
- 26" LCD TV *(Opt. on TC-25QB, TC-26RK, TC-29BH)*
- RVQ Grill w/Stand
- 26" LCD TV Inside Outside Kitchen Inside-Outside Viewing *(Opt. on TC-24RS)*
- New Decors; Dynamite (Red), Moon Beam (Brown), Huntington Place (Beige), Tamarack (Green)
- Night Shades IPO V-Blinds All Locations Except Kitchen and Bunk Area
- 6-Gallon Gas/Elec. DSI Water Heater
- Outside Shower
- Two 30 lb. L.P. Tanks w/Automatic Changeover w/Tank Cover IPO 20# L.P. Tanks *(N/A on TC-19E, TC-21E)*
- A/C 13,500 BTU - Non-ducted *(Opt. on TC-19E, TC-21E)*
- A/C 13,500 BTU - Ducted *(N/A on TC-19E, TC-21E)*
- A/C 15,000 BTU - Ducted *(N/A on TC-19E, TC-21E)*
- Fantastic Attic Fan
- Swing-away Entry Door Handle (Main Entry Door)
- Electric Patio Awning
- Bedroom Entry Door w/Double Entry Steps *(Opt. on TC-26RK)*

CONSTRUCTION FEATURES**FLOOR LAMINATE**

1. Luan
2. Luan
3. Aluminum Frame and Foam
4. Luan
5. Darco

**SIDEWALL LAMINATE**

1. Fiberglass Skin - Dent Resistant, Low Maintenance
2. Luan
3. Aluminum Frame and Foam
4. Wallboard

YOUR DEALER:**TRAIL CRUISER**

R-VISION

R-VISION606 NELSON'S PKWY., WAKARUSA, IN 46573
800.282.4654 • WWW.TRAIL-LITE.COM

As R-Vision constantly strives to improve our product, all specifications listed in this informative brochure are subject to change without notice or obligation. Photos may show optional equipment which is not included in the purchase price of the unit. Test drive and review a current model on your dealer's lot today.