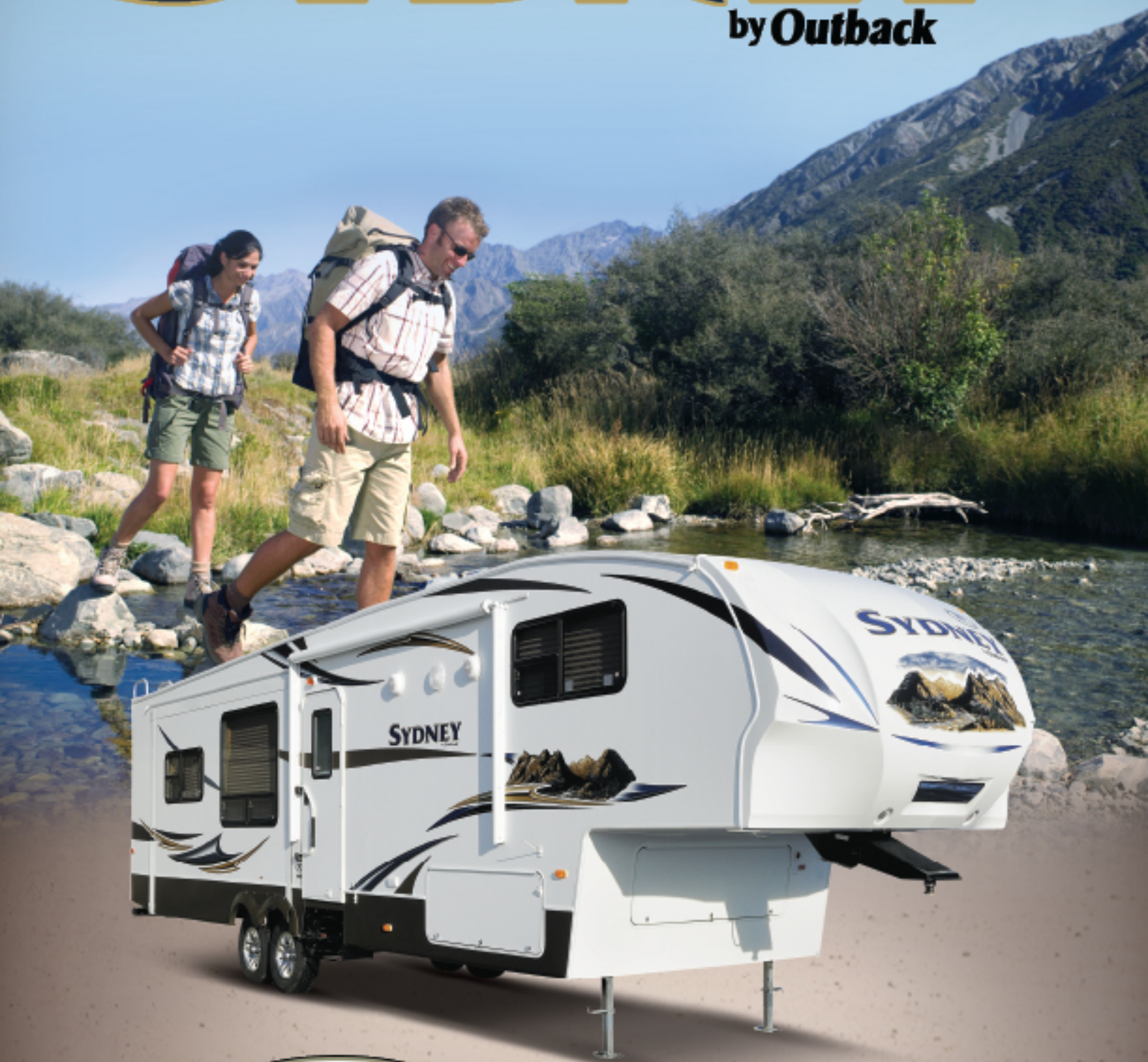


SYDNEY

by **Outback**



MID-PROFILE AND SUPER-LITE Fifth Wheels



MID-PROFILE
AND SUPER-LITE
Fifth Wheels





325FRE SHOWN IN TRUFFLE DECOR



325FRE SHOWN IN TRUFFLE DECOR

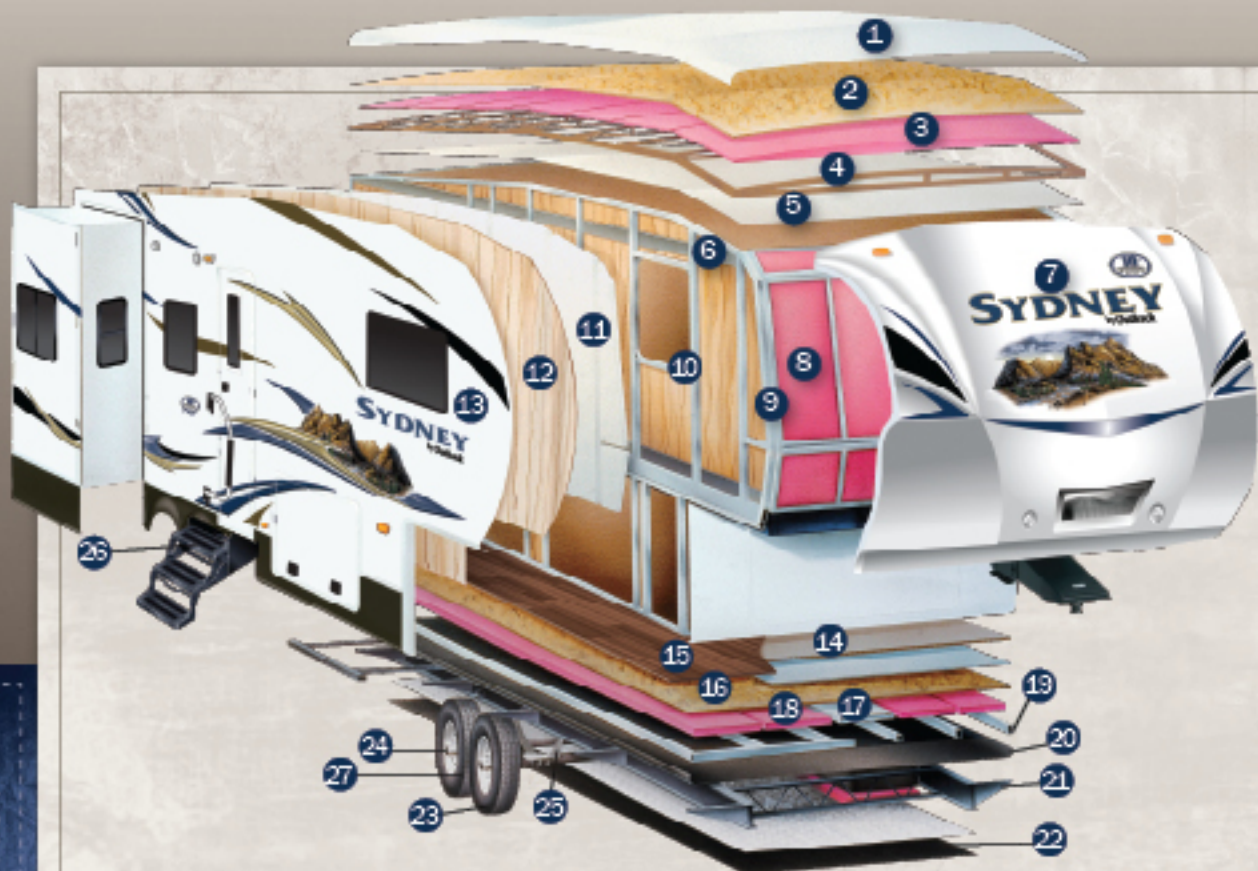


325FRE SHOWN IN TRUFFLE DECOR

SYDNEY

by **Outback**

Experience the Sydney 10th Anniversary Edition. Focused on aerodynamic and tasteful design and fashioned with interiors for the fresh look of today. Sydney offers you mid profile and super-lite fifth wheels with high end quality at a mid-range price. Using the latest materials and technology for strength and lightness, Sydney combines durability, style and ease of towing. Compare Sydney's 10th Anniversary Edition's list of features and you will be amazed at the value Sydney delivers.



ROOF

- 1 Seamless One-Piece EPDM Rubber Roof
- 2 3/8" Fully Walkable Wood Decking*
- 3 R-14 Blanket Insulation
- 4 5" Radius Roof Trusses
- 5 1/8" Vinyl Protected Ceiling Panel

SIDEWALL

- 6 Metal Backing EGG Strips
- 7 Aerodynamic Radius High Gloss Front Fiberglass Cap w/ Hitch Vision
- 8 R-9 Fiberglass Insulation End Walls
- 9 2" Box Welded Aluminum Side and End Walls
- 10 Corner Radius Window Inserts
- 11 R-9 Solid Block Foam Insulation
- 12 1/8" Luan Wood Backing
- 13 Gel Coated Fiberglass Exterior

FLOOR

- 14 High Density Residential Carpet w/ Stain Resistance
- 15 Residential Grade Linoleum
- 16 Seamless 5/8" Treated Wood Floor Decking*
- 17 Residential In Floor Ducted Heat
- 18 R-14 Blanket In Floor Insulation*
- 19 3" Welded Box Frame Aluminum Floor Joists, 13" on Center*
- 20 Deroce Wrap Vapor Barrier
- 21 8" to 10" "Powder Coated" Steel I-beam Frame
- 22 One Piece, Polypropylene Enclosed and Heated Underbelly
- 23 16" Radial Tires with 12" Electric Brakes
- 24 EZ Lube Axles
- 25 Leaf Spring Suspension System
- 26 Entry Step Light
- 27 Equa-Flex Rubber Equalizer System

*Sydney Super-Lite utilizes laminated aluminum floors, 15' steel and galvanized steel rollers, 1 1/2" welded aluminum sidewalls.





- 1** Oversized pass through storage gives you room for all your camping supplies. (325 FRE shown here)
- 2** Notice the 8' 2" ceiling height in the living room slides. The higher slide height means easier access and larger cabinets for storage. The glass mullion cabinet doors offer an elegant touch. (N/A Sydney Super-Lites)
- 3** Corian countertops provide a rich look and durability not found in many of the solid surface countertops used by competitors. (N/A Sydney Super-Lites)
- 4** Sydney's Utility Center encloses all exterior system controls in one convenient location. (N/A Sydney Super-Lite)
- 5** Sydney's Air Vent cover in the bathroom provides ventilation during inclement weather and in storage.
- 6** Experience the convenience of full extension drawer glides on all kitchen and bedroom drawers.
- 7** Standard with Sydney's mid profile floor plans are 50 amp electrical service, detachable chord and wiring and prep for a 2nd air conditioner. (N/A Sydney Super-Lites)
- 8** Sydney's heated underbelly encloses tanks and valves helps extend the camping season, increase interior storage and provide better tow ability.
- 9** Turning radius is improved more than 30% with the most aerodynamic front fiberglass cap in the industry.
- 10** Sydney's black tank flush makes cleaning the tank simple!
- 11** The Equa-Flex rubber equalizer system completes the task of keeping road shock where it belongs.



VIEW INTERIOR SNAPSHOT PHOTOS AT
www.keystone-sydney.com



SYDNEY

by Outback



215FBH



283FRE

SUPER-LITE
 floorplans

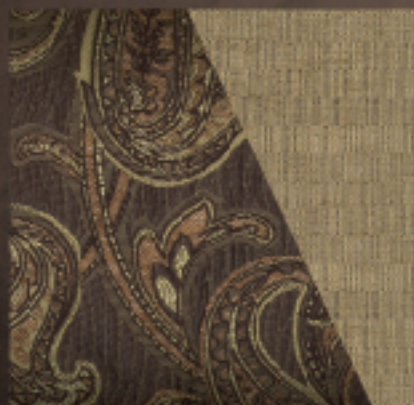


288FRL

TRUFFLE

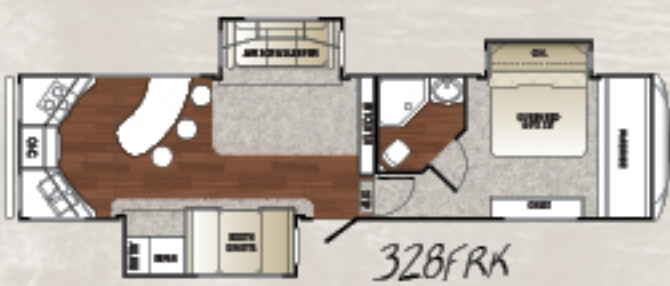
RUSSET

MOONLIGHT



FLOORPLANS, Specs & Decor Options

MID-PROFILE floorplans



	275FBH	283FRE	288FRL	322FRL	325FRE	328FRK	330FRL	340FBH	345FRB
SHIPPING WEIGHT	7536	TBD	TBD	9810	10300	9549	10170	TBD	TBD
CARRYING CAPACITY	2745	TBD	TBD	2190	1700	2775	1945	TBD	TBD
HITCH WEIGHT	1480	TBD	TBD	1840	1815	1915	1715	TBD	TBD
EXTERIOR LENGTH	31' 10"	30' 10"	30' 10"	36' 4"	36' 10"	36' 7"	36' 9"	TBD	TBD
EXTERIOR WIDTH	96"	96"	96"	96"	96"	96"	96"	96"	96"
EXT. HEIGHT - A/C TOP	12' 2"	12' 2"	12' 2"	12' 4"	12' 4"	12' 4"	12' 4"	TBD	TBD
AWNING	14'	14'	14'	12'	11'	11'	14'	TBD	TBD
LP CAPACITY (LBS.)	60	60	60	60	60	60	60	TBD	TBD
FRESH WATER (GAL.)	50	50	50	50	50	50	50	TBD	TBD
GRAY WATER (GAL.)	60	30	60	80	80	80	80	TBD	TBD
WASTE WATER (GAL.)	30	30	30	40	40	40	40	TBD	TBD

www.keystone-sydney.com

Standards

Living Area

	MID-PRO-FILE	SUPER-LITE
Rich residential cherry hardwood cabinetry with a touch of butter-cream thermo-film raised panel doors	•	•
Air bed sleeper sofa w/storage drawer	•	•
Large panoramic view windows	•	•
Pre-drilled and screwed cabinetry	•	•
36" flush floor slides	•	•
Access door under dinette	•	•
King U-shaped dinette w/storage drawers	•	•
Etched glass upper cabinets	•	•
Custom designed box valances w/ curtains	•	•
Placed shades	•	•
Beaufort linoleum flooring	•	•
Deep wood side drawers w/ ball bearing metal drawer glides	•	•
Skylight (most models)	•	•
8'2" extra tall slide out with 16" cabinets	•	•
Water, soil, stain resistant fabrics	•	•
Large overhead cabinets	•	•
Decorative wall lights	•	•
32" LCD HDTV flat screen (40" 328 FRK)	•	•
Central command center	•	•
Fireplace (340FRH, 345FRB, 350 FRL, 328 FRK, 325 FRE, 322 FRL)	•	•
Kitchen		
*Cortan countertops	•	•
*90/40 deep sink w/ 3" drain	•	•
Trash can storage	•	•
*High rise faucet	•	•
*Utensil trays	•	•
Microwave	•	•
3 burner range	•	•
Oven	•	•
Bedroom		
*Deluxe innerspring mattress	•	•
TV hook-up	•	•
Solid wood slider bedroom door	•	•
His and her wall lights	•	•
Deluxe wardrobe	•	•
Residential bedspread w/ headboard	•	•
Bedroom speakers	•	•
Bathroom		
Residential neo-angle shower	•	•
Bathroom vent cover	•	•
Glass shower door	•	•
Residential height vanity	•	•
Porcelain foot flush toilet	•	•
Deluxe medicine cabinet	•	•
Appliances		
AM/FM/CD stereo w/ DVD player and MP3 hook-up	•	•
8 cu. ft. two door refrigerator	•	•
6 cu. ft. two door refrigerator	•	•
3 burner range	•	•
6 gallon gas/electric DSI water heater	•	•
10.2 gallon per hour quick recovery	•	•
Water heater by-pass	•	•
Wall mounted thermostat controlled A/C	•	•
30,000 BTU furnace	•	•

Exterior Standards

	MID-PRO-FILE	SUPER-LITE
Black framed tinted jalousie safety glass windows	•	•
Extra large baggage doors, 1" thick w/ continuous extruded hinge and rubber D-seal	•	•
Folding entry grab handle	•	•
Extra wide 30" radius main entry door	•	•
28" wide radius entry door	•	•
Hitch light	•	•
Hitch vision mirror w/ LED hitch lights	•	•
Satellite prep	•	•
Sydney utility center	•	•
Welded fiberglass front cap	•	•
Extended drip caps, full length drip rails	•	•
Security lights each side	•	•
Heated enclosed underbelly (tanks and valves)	•	•
Ladder	•	•
Porch light	•	•
Grab rails on front jacks	•	•
Exterior 120V receptor	•	•
Weather encapsulated trim	•	•
Automotive style fender skirt	•	•
Exterior speakers	•	•
EZ tube axles	•	•
Electric front jacks	•	•
12V battery disconnect	•	•
16" spare tire, carrier & cover	•	•
15" spare tire, carrier & cover	•	•
Outside camp kitchen (most models)	•	•
Exterior quick connect LP hook-up (most models)	•	•
Walls-Construction		
Welded aluminum framed, laminated sidewalls	•	•
Solid block foam R-9 insulation	•	•
Roof		
3" tapered truss on 16" centers	•	•
3" galvanized steel truss on 16" centers	•	•
3/8" roof decking	•	•
One piece EPDM rubber roof	•	•
R-14 blanket insulation	•	•
Floor		
3" welded aluminum floor joist on 16" centers	•	•
Laminated, aluminum framed, double layer lean plywood	•	•
R-11 insulation	•	•
Chassis		
Leaf spring equalizing suspension system	•	•
1 1/2" Rear bike receiver hitch	•	•
10" powder coated I-beam frame	•	•
8" powder coated I-beam frame	•	•
12" electric brakes	•	•
10" electric brakes	•	•
235 80R 16E radial tires	•	•
225 75R 15D radial tires	•	•
Aluminum wheels	•	•
Equal-Flex rubber suspension system	•	•
Wired, prepped for 2nd A/C	•	•

	MID-PRO-FILE	SUPER-LITE
75-watt converter	•	•
55-watt converter	•	•
2-30lbs LP bottles w/ auto changeover	•	•
TV antenna w/booster	•	•
Cable TV hook-up	•	•
30-amp shore power line w/ detachable cord	•	•
Safety		
LP leak detector	•	•
Smoke detector	•	•
Carbon monoxide detector	•	•
Fire extinguisher	•	•
Tinted safety glass windows	•	•
Break-away switch	•	•
Manual slide backup on all electric slide outs	•	•

Options

Designer Package	•	•
Comfort Package	•	•
Oven	•	•
Air bed sleeper sofa	•	•
32" LCD TV	•	•
40" LCD TV (328 FRK only)	•	•
Large radius entry door	•	•
RVA	•	•
6 gallon gas/electric DSI water heater	•	•
Electric front jacks	•	•
Carbon monoxide detector	•	•
Free standing table and chairs	•	•
Stabilizer jacks (2)	•	•
Radial tires	•	•
Aluminum wheels	•	•
Security lights (2)	•	•
Outside Camp Kitchen (most models)	•	•
16" spare tire, carrier, and cover (N/A Super-Lites)	•	•
30 amp service and prepped for 2nd A/C	•	•
Sydney Comfort Package		
Roof air conditioner	•	•
TV antenna w/ booster	•	•
Electric gallo awning	•	•
AM/FM/CD stereo w/ DVD player and MP3 hook-up	•	•
Folding entry handle	•	•
Satellite prep	•	•
Sydney Air vent cover	•	•
Sydney Designer Package		
Wallpaper border	•	•
Shower door	•	•
Utensil tray	•	•
Residential air bed sleeper sofa	•	•
6 panel raised refrigerator panels	•	•
Trash container	•	•



Look for Sydney Videos at www.keystone-sydney.com

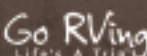


www.kestonerv.com

2642 Hackberry Drive
PO Box 2000
Goshen, IN 46527-2000
(574) 535-2100



www.keystone-sydney.com



YOUR LOCAL DEALER IS: