

LAREDO 5TH WHEEL STANDARDS & OPTIONS

Tires & Chassis

- Powder-coated I-beam frame
- Tube style bumper w/sewer hose storage
- Electric slideout system w/manual override
- Adjustable extended hitch pin
- Radial tires
- EZ lube axles
- 12" electric brakes
- Full-size spare tire

EXTERIOR

- Fully enclosed underbelly
- Heated, enclosed holding tanks & gate valves
- Oversized lighted pass-thru storage
- Roto cast storage for wet or greasy items
- Exterior shower w/hot & cold
- Fold away entry assist handle
- Exterior marine grade speakers
- Rain gutters w/downspouts
- Security light
- Entrance door light
- Rear ladder
- Triple entrance steps
- Electric front jacks w/adjustable snap pins
- Aerodynamic front cap w/Hitch Assist Mirror & 2 LED lights w/Max Turn Technology
- Outside 110V outlet & TV connection
- Lighted entry step

Product information is as accurate as possible as of the date of publication of this brochure. Features, floor plans, and specifications are subject to change without notice. Please also consult Keystone's web site at www.keystonerv.com for more current product information and specifications. Tow Vehicle Disclaimer: CAUTION: Owners of Keystone recreational vehicles are solely responsible for the selection and proper use of tow vehicles. All customers should consult with a motor vehicle manufacturer or their dealer concerning the purchase and use of suitable tow vehicles for Keystone products. Keystone disclaims any liability or damages suffered as a result of the selection, operation, use or misuse of a tow vehicle. KEYSTONE'S LIMITED WARRANTY DOES NOT COVER DAMAGE TO THE RECREATIONAL VEHICLE OR THE TOW VEHICLE AS A RESULT OF THE SELECTION, OPERATION, USE OR MISUSE OF THE TOW VEHICLE. 11/2010

INTERIOR

Living Area

- Extra wide dinette w/storage below
- 6'3" slide room height
- Ventilating windows on slideout end walls
- Overhead cabinets in slide rooms
- Residential grade carpet and padding
- Stain resistant fabrics
- Pleated day/night shades
- Designer window treatments
- Raised panel mortise & tenon cabinet doors
- Entertainment center w/TV cabinet

Kitchen

- Residential-size overhead cabinets
- Dual Corian sink covers
- Flip up Corian countertop extension (N/A 316, 295, 324)
- 60/40 deep-bowl under-mount sink
- Metal high-rise faucet
- Linoleum floor
- Ball bearing full extension drawer guides

Bathroom

- Oversized shower w/glass door
- Tub surround w/shelves
- Porcelain foot pedal flush toilet
- Residential-size bath sink
- Medicine cabinet

- Skylight over bath
- Power roof vent

Bedroom

- 60" x 80" innerspring mattress
- Bedsprad w/matching headboard
- Wardrobe storage
- TV hook-up
- Reading lights

Appliances

- 12V AM/FM/CD/DVD home theater system
- w/ surround sound effect speakers
- Double door refrigerator w/wood inserts
- Microwave w/carousel
- Range hood and light
- 13,500 BTU ducted A/C
- 22" high output range w/auto igniter

Utilities

- Easy access double 30-lb. LP bottles w/auto changeover
- 35,000 BTU high-output furnace w/automatic ignition
- 6 Gallon gas/elec. DSI hot water heater (265, 266)
- Winter Guard winterizing kit
- Water heater bypass kit
- Systems monitor panel
- 55-amp convertor
- 30-amp power cord
- Cable & satellite hook-ups
- Black tank flush

Safety

- LP gas leak detector
- Smoke detector
- Carbon monoxide detector
- Fire extinguisher
- 12" Electric brakes w/breakaway switch
- Safety glass windows

OPTIONAL EQUIPMENT

- 15,000 BTU ducted A/C
- Free standing dinette w/4 chairs
- Canadian certification

Best in Class Package (All FWs)*

- Adjustable electric awning
- 26" LCD HD TV (295, 310, 324-40")
- Electric rear stabilizer jacks
- Equa-Flex suspension system
- Aluminum wheels
- Air mattress sleeper sofa w/storage below
- Corian surface countertops (kitchen)
- Bus style slam baggage doors
- Comfort Zone Climate System
- Keyless entry system
- Deluxe exterior graphics
- Residential glazed maple cabinet doors

Bigger is Better Package (295, 310, 316, 321, 324)*

- 8 cubic foot refrigerator
- 12 gallon gas/electric DSI hot water heater
- 16"-8 lug aluminum wheels
- 6,000lb axles
- 50 AMP service
- Wire and frame for 2nd A/C

*Mandatory Package



www.keystonerv.com

2642 Hackberry Drive | PO BOX 2000
Goshen, Indiana 46527-2000
(574) 535-2100



Look for our Walk Around Videos on our website!



January 11

Laredo

www.keystone-laredo.com

By Keystone



**MORE
BEST IN CLASS
FEATURES THAN
COMPETITION!**



Laredo

By Keystone

FIFTH WHEEL FLOORPLANS



310 RE

Shipping Weight: 10204 lbs. Lenth: 36' Fresh: 55 gal.
 Carrying Capacity: 2796 lbs. Height: 12' 7" Waste: 40 gal.
 Hitch: 1785 lbs. Gray: 75 gal.



265 RL

Shipping Weight: 7774 lbs. Lenth: 30' Fresh: 49 gal.
 Carrying Capacity: 2827 lbs. Height: 12' 4" Waste: 40 gal.
 Hitch: 1360 lbs. Gray: 40 gal.



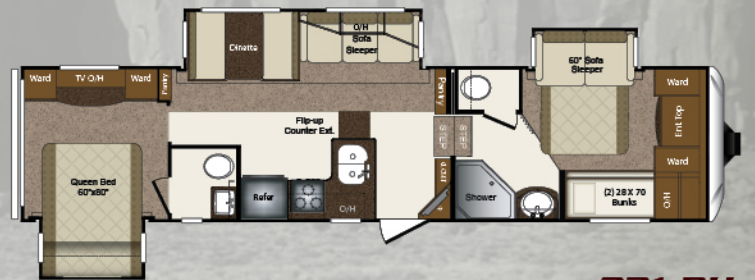
316 RL

Shipping Weight: 9437 lbs. Lenth: 35' Fresh: 55 gal.
 Carrying Capacity: 2563 lbs. Height: 12' 7" Waste: 40 gal.
 Hitch: 1785 lbs. Gray: 75 gal.



266 RL

Shipping Weight: 8283 lbs. Lenth: 30' 5" Fresh: 49 gal.
 Carrying Capacity: 2717 lbs. Height: 12' 4" Waste: 40 gal.
 Hitch: 1775 lbs. Gray: 40 gal.



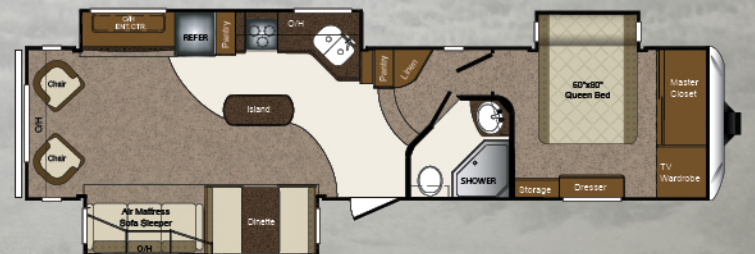
321 BH

Shipping Weight: 10228 lbs. Lenth: 36' Fresh: 55 gal.
 Carrying Capacity: 2776 lbs. Height: 12' 7" Waste: 75 gal.
 Hitch: 1980 lbs. Gray: 75 gal.



295 RK

Shipping Weight: 9660 lbs. Lenth: 33' 10" Fresh: 55 gal.
 Carrying Capacity: 2840 lbs. Height: 12' 7" Waste: 40 gal.
 Hitch: 1830 lbs. Gray: 25 gal.



324 RL

Shipping Weight: 10330 lbs. Lenth: 36' 4" Fresh: 55 gal.
 Carrying Capacity: 2670 lbs. Height: 12' 7" Waste: 40 gal.
 Hitch: 2000 lbs. Gray: 75 gal.



VIEW SNAPSHOT PHOTOS OF FLOORPLAN INTERIORS AT WWW.KEystone-LAREDO.COM