

# Outback

*Keystone Super-Lite*



**SUPER-LITE** Travel Trailers



# Outback

*Keystone Super-Lite*



The Outback 10th Anniversary Edition takes comfort and style to a whole new level. Vaulted ceilings and upgraded furniture provide a roominess and sophistication unseen in other light weight trailers. Butter Rum Cream and Auburn Cherry cabinets still delivers the styling that campers have come to expect from Outback. See for yourself how the Outback 10th Anniversary Edition can make camping better than it's ever been.





298RE SHOWN IN MOONLIGHT DECOR

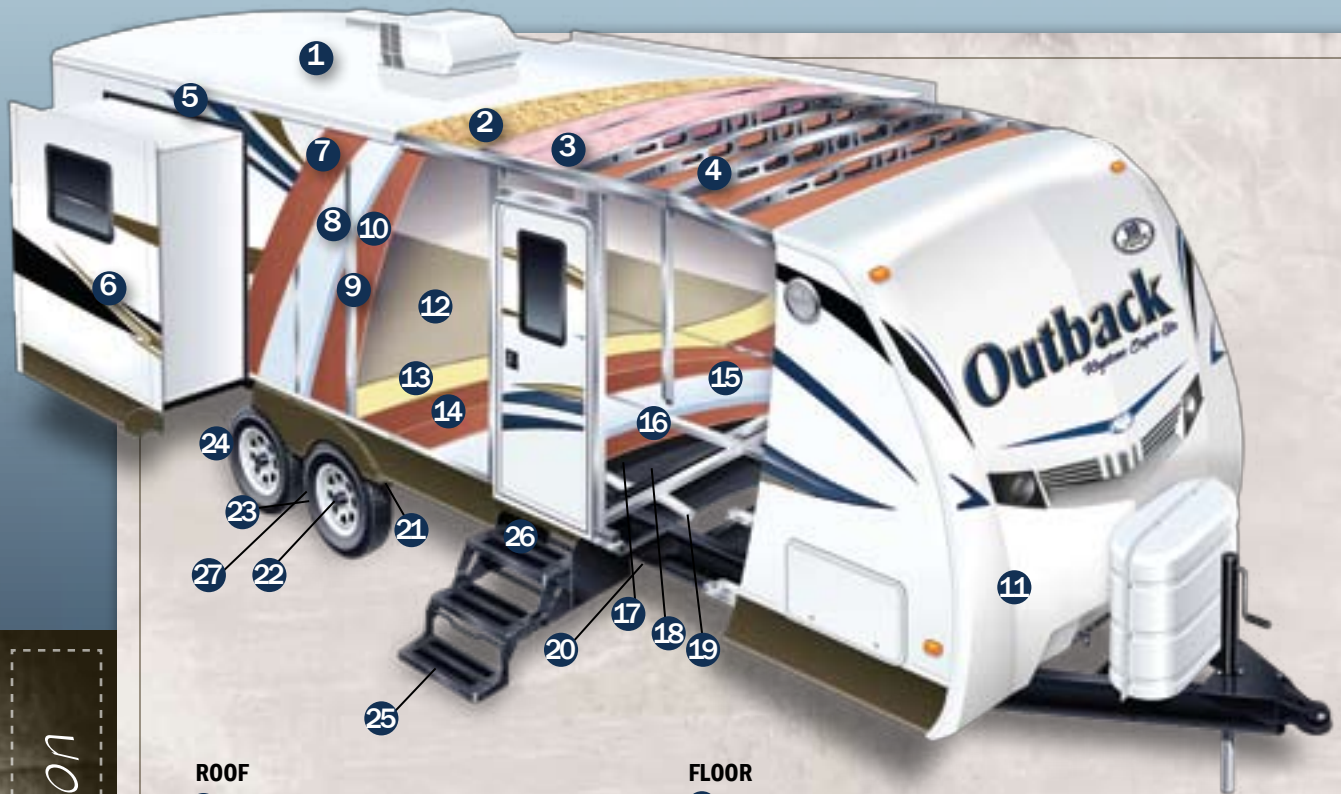


www.keystone-outback.com

## INTERIORS

- 1 Oversized cabinets and drawers increases the storage in the Outback kitchen to levels not seen in most light weights.
- 2 The Outback 10th Anniversary vaulted ceiling adds 4" of interior height
- 3 Swivel 24" LCD TV (most models) provides for easy viewing in the living room and bedroom.
- 4 Outback Command Center keeps all unit controls in one easily accessible location.

# DURABLE Construction



## ROOF

- 1 Seamless One-Piece EPDM Rubber Roof
- 2 3/8" Fully Walkable Wood Decking
- 3 R-14 Blanket Insulation
- 4 5" Radius, Galvanized Steel Roof Trusses, 16" on Center
- 5 Full Length Drip Rail

## SIDEWALL

- 6 Gel-Coated Fiberglass Exterior
- 7 1/8" Luan Wall Backing
- 8 R-7 Solid Block Foam Insulation
- 9 1 1/2" Box Welded Aluminum Frame Walls
- 10 Interior Decorative Wall Board
- 11 Gel Coat Molded Fiberglass Front Cap

## FLOOR

- 12 Residential Grade Stain Resistant Carpet & Linoleum
- 13 Carpet Pad
- 14 Double Layer Luan Decking w/ Staggered Seams
- 15 R-10 Block Foam Insulation
- 16 Welded Aluminum Floor Joists
- 17 Bottom Layer Luan Decking
- 18 Darco Vapor Barrier Wrap
- 19 One Piece, Polypropylene Enclosed and Heated Underbelly
- 20 In Floor Residential Ducted Heat

## CHASSIS

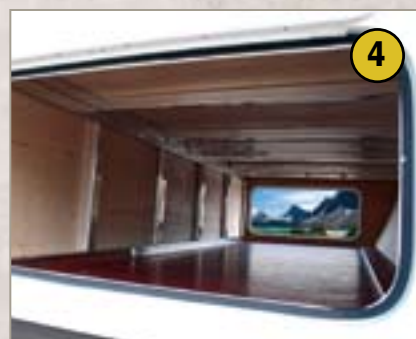
- 21 6" Powder Coated Steel I-Beam Frame (8" frame models - 277RL and larger)
- 22 Leaf Spring Suspension System
- 23 EZ Lube Axles with 10" Electric Brakes
- 24 15" Radial Tires
- 25 3-Step Entry Mounted to I-Beam Frame
- 26 Step Light
- 27 Equa-Flex Rubber Equalizing System



**KARGOROO**  
by Keystone



# FEATURES



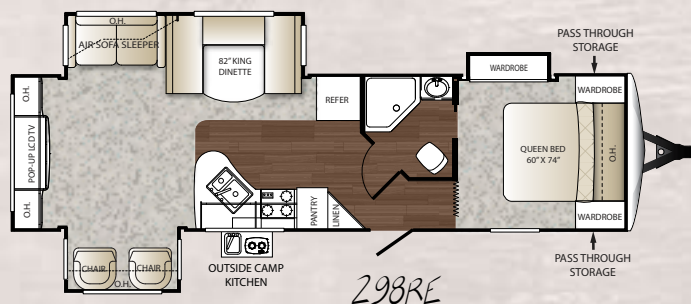
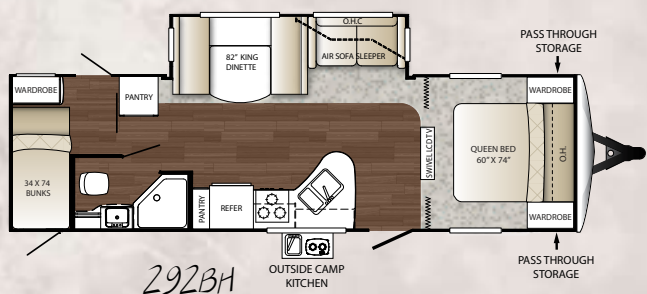
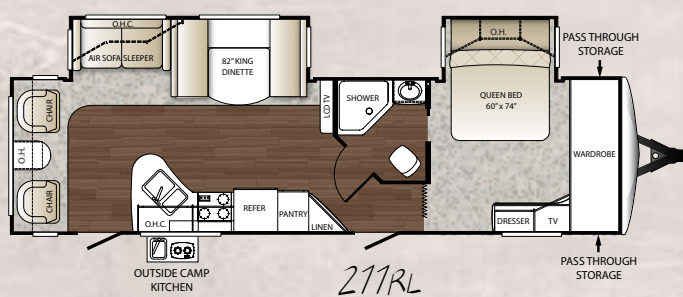
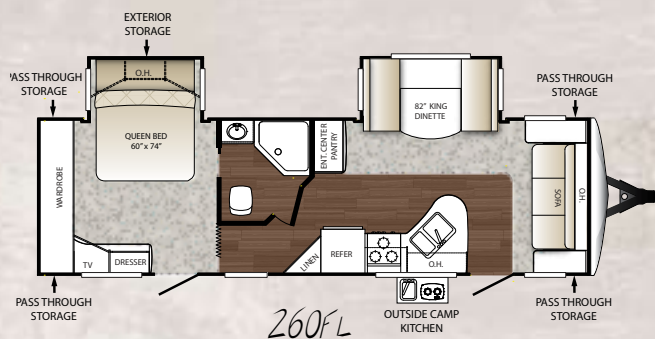
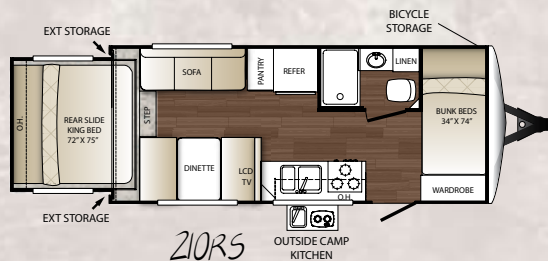
- 1 Enjoy great outdoor cooking with family and friends on our outdoor kitchen (312 BH, 279 RB models only).
- 2 Outside Camp Kitchen (most models), exterior speakers, security lights and a 110 volt outlet are included for your convenience.
- 3 Outback's Air Vent cover provides ventilation during inclement weather and in storage.
- 4 Outback's all aluminum pass through storage exemplifies our quality construction and allows for maximum storage capacity.
- 5 Our heated and enclosed underbelly helps extend the camping season.
- 6 The Equa-Flex rubber equalizer system completes the task of keeping road shock where it belongs.
- 7 Outback 10th Anniversary Editions all new molded fiberglass front cap is aerodynamic and durable. It also provides LED Hitch lights for easy hitching!
- 8 Take your toys in an Outback Kargaroo. The front room doubles as a bunk room and a cargo area. 230 RS shown here.
- 9 Combined with a one-piece galvanized steel roof truss system, Sydney utilizes the most durable, lightest construction techniques available.



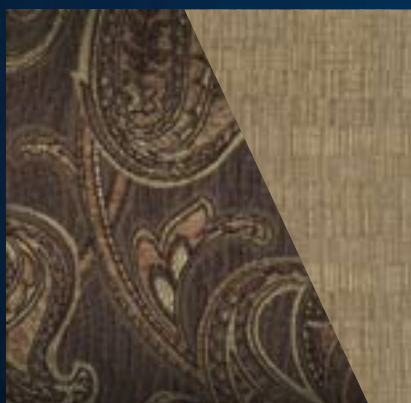
## DSI

17th Annual RVDA DEALER SATISFACTION INDEX

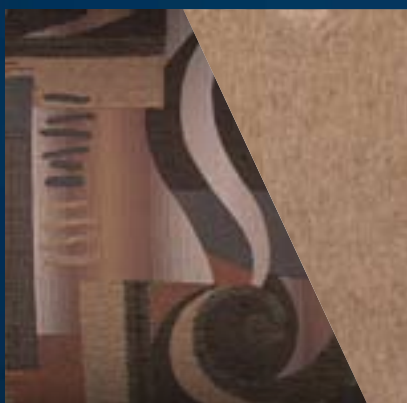
Outback has won the DSI Award which highlights product design, reliability, quality, warranty support and parts support.



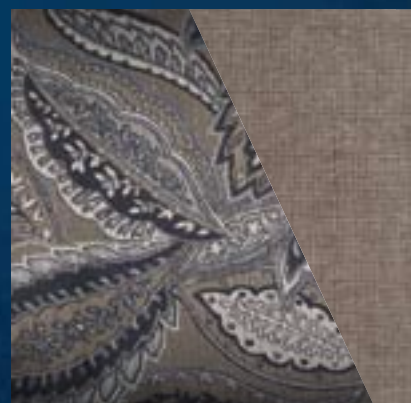
### TRUFFLE



### RUSSET

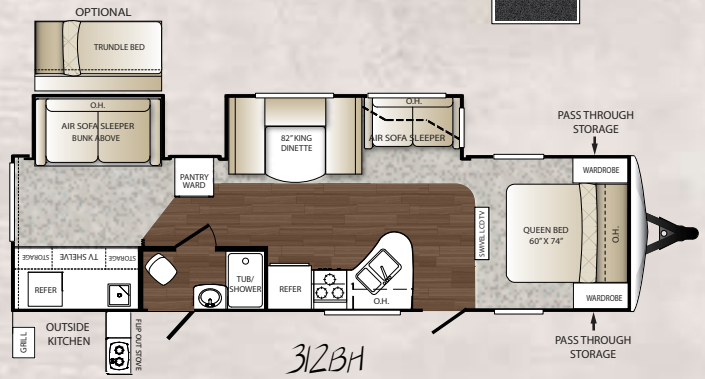
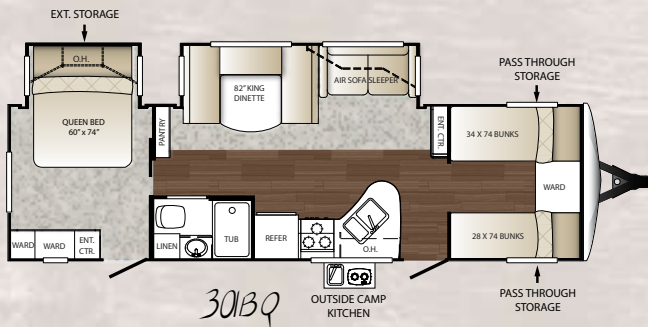
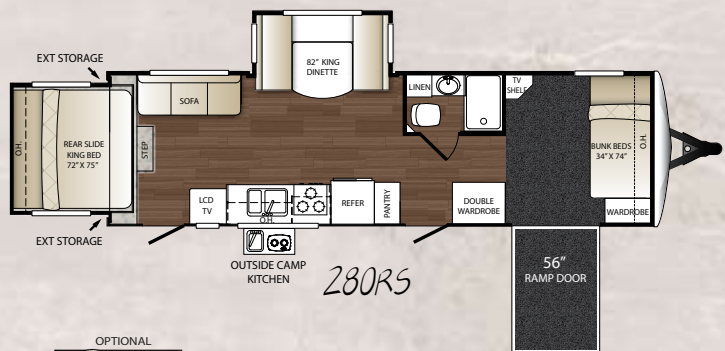
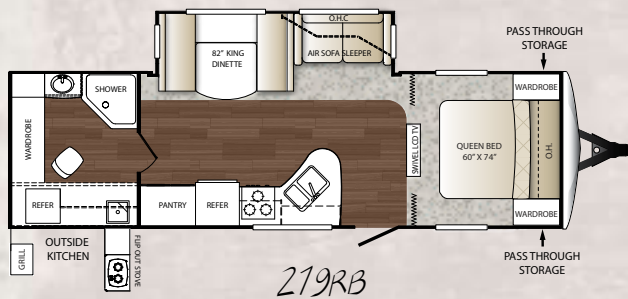
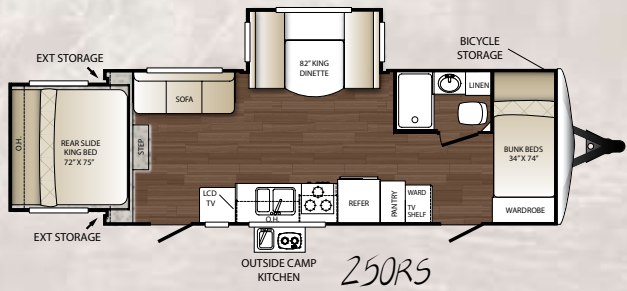


### MOONLIGHT





# FLOORPLANS, Specs & Decor Options



	210RS	230RS	250RS	260FL	271RL	271RB	280RS	292BH	298RE	301BQ	312BH
SHIPPING WEIGHT	4750	5295	2980	6615	7360	TBD	6442	TBD	7385	7120	7585
CARRYING CAPACITY	2800	2255	1570	1185	1240	TBD	1758	TBD	1615	1080	1415
HITCH WEIGHT	525	510	640	810	870	TBD	575	TBD	795	735	765
EXTERIOR LENGTH	23' 2"	27' 3"	27' 9"	31' 9"	34' 10"	TBD	32' 1"	TBD	34' 2"	33' 6"	35' 5"
EXTERIOR WIDTH	96"	96"	96"	96"	96"	TBD	96"	TBD	96"	96"	96"
EXT. HEIGHT - A/C TOP	10' 11"	10' 11"	10' 11"	10' 11"	10' 11"	TBD	10' 11"	TBD	10' 11"	10' 11"	10' 11"
AWNING	14'	19'	15'	19'	19'	TBD	19'	TBD	17'	19'	17'
LP CAPACITY (LBS.)	60	60	60	60	60	TBD	60	TBD	60	60	60
FRESH WATER (GAL.)	43	50	50	50	43	TBD	43	TBD	50	43	50
WASTE WATER (GAL.)	30	30	30	30	30	TBD	30	TBD	30	30	30
GRAY WATER (GAL.)	30	30	30	30	60	TBD	60	TBD	60	60	60

www.keystone-outback.com

## Standards

### Living Area

- Dinette cup holders
- Upgraded furniture package
- Outback switch command center
- Rich residential cherry hardwood cabinetry with a touch of butter rum cream thermofoil raised panel doors
- King U-shape dinette (most models)
- 36" flush floor slides
- Large panoramic windows
- Pre-drilled and screwed cabinetry
- Custom designed box valance with lambrequins
- Linoleum flooring
- Large wood side drawers with steel guides
- Water, soil stain resistant fabrics
- Large overhead cabinets
- Residential air bed sleeper sofa with storage drawer (most models)\*
- 24" LCD HDTV\*
- 32" LCD HDTV (298 only)
- Pleated shades\*
- Decorative wall lights\*
- Vaulted ceiling

### Kitchen

- 60/40 deep sink with 3" drains
- Trash can storage\*
- Two door 6 cu. ft. refrigerator
- High-rise faucet
- Utensil tray
- 3 burner range with oven\*
- Microwave
- Upgraded laminate countertops

### Bedroom

- Deluxe innerspring mattress
- TV hook-up
- Jalousie windows for maximum ventilation
- Residential bedspread
- Deluxe headboard
- His and her lights
- Bedroom speakers
- Night stand
- Recessed cubby storage (most models)

### Bathroom

- Power roof vent
- Skylight over tub
- Porcelain foot flush toilet
- Laundry hamper
- Tub surround\*
- Garden shower (260, 277, 279, 292, 298)
- Deluxe medicine cabinet
- Large linen closet (most models)
- Outback air vent cover

### Appliances

- AM/FM/CD stereo with DVD player and MP3 hookup (N/A 210, 230, 250, 280)
- Two door 6 cu. ft. refrigerator
- 3 burner range with oven\*

Our Stor-Mor dinette drawers offer easy access to storage underneath the U-shaped dinette.



- Six gallon gas/electric DSI water heater by pass with 16.2 gallons per hour "quick recovery"\*
- 13,500 BTU AC wall thermostat
- 30,000 BTU furnace
- Microwave

### Exterior Standards

- Molded fiberglass front cap
- Black framed tinted jalousie safety glass windows
- Black tank flush
- Extra large baggage doors, 1" thick with continuous hinge and rubber D-seal
- Assist entry grab handle
- Extended drip caps and full length drip rail
- Two security lights (one on each side)\*
- Porch light
- Hitch light
- Step light
- Weather encapsulated body trim
- Exterior 120V receptacle
- Heated enclosed underbelly including tanks and valves
- LP tank cover
- Automotive style fender skirts
- Double welded dual battery brackets
- Exterior TV mount with cable hook up
- Exterior speakers
- Easy lube axles
- Outside camp kitchen\*
- Exterior quick connect LP hook-up
- Stabilizer Jacks (4)
- LED Hitch lights
- 10th Anniversary graphics package
- Satellite ready
- Braced for rear ladder

### Walls – Construction

- Welded aluminum walls with R7 insulation
- Solid block foam insulation

### Roof

- 5" Radius, vaulted galvanized steel, tapered trusses on 16" centers
- 3/8" roof decking
- One-piece EPMD rubber roof
- R14 blanket insulation

### Floor

- 2" welded aluminum laminated floor
- R10 block foam insulation
- Wrapped vapor barrier
- Polypropylene enclosed heated underbelly encloses tanks and valves

### Chassis

- Leaf spring equalizing suspension system
- Powder coated I-beam
- EZ lube axles
- 10"- electric brakes
- 15" radial tires\*
- 15" spare tire, carrier & cover\*
- Aluminum rims
- Equa-Flex™
- Rear bike receiver hitch

### Utilities

- 55-amp converter
- 30 lbs. LP bottles with auto changeover
- TV antenna with booster, cable TV
- 30-amp shore power line
- LP leak detector
- Smoke detector
- Carbon monoxide detector\*
- Fire extinguisher
- Tinted safety glass windows
- Break-away switch
- Safety chains (TT only)
- Manual slide backup on all electric slide outs
- 12 Volt battery disconnect

## Options

- Designer Package
- Comfort Package
- Carbon monoxide detector
- Tub surround
- Outside camp kitchen
- RVIA
- Radial Tires
- 15" spare tire, carrier, and cover
- 6 gal. gas/electric DSI water heater by pass with 16.2 quick recovery
- Stabilizer jacks (4)
- 2 Security lights at each side
- Oven
- Air bed sofa sleeper
- 24" LCD HDTV campsite theatre
- Aluminum rims
- Power king rear slide (210, 230, 250, 280)
- Power awnings
- Trundle bed (312 only)
- Freestanding table (260, 277, 279, 298)

### Outback Designer Package\*

- Wall border
- Cloth shower curtain (most models)
- Laundry hamper
- Oil rubbed bronze coat hooks (most models)
- Utensil rack
- Sofa bolsters
- Innerspring mattress
- Bedspread
- LP cover
- Raised panel refrigerator
- Pleated shades
- Decorative wall lights
- Trash can

### Outback Comfort Package\*

- 13,500 BTU ducted AC
- TV antenna/cable
- AM/FM/CD stereo with MP3 hookup
- Outback air vent
- Microwave
- Stor-mor Dinette Drawers
- Entry handle
- High low dinette

\* Denotes STD Build Options



Look for Outback Videos at  
[www.keystone-outback.com](http://www.keystone-outback.com)



[www.keystonerv.com](http://www.keystonerv.com)

2642 Hackberry Drive  
PO Box 2000  
Goshen, IN 46527-2000  
(574) 535-2100



[www.keystone-outback.com](http://www.keystone-outback.com)



YOUR LOCAL DEALER IS:

Product information is as accurate as possible at the date of publication of this brochure. Features, floor plans, and specifications are subject to change without notice. Please also consult Keystone's web site at [keystonerv.com](http://keystonerv.com) for more current product information and specifications. **Tow Vehicle Disclaimer.** CAUTION: Owners of Keystone recreational vehicles are solely responsible for the selection and proper use of tow vehicles. All customers should consult with a motor vehicle manufacturer or their dealer concerning the purchase and use of suitable tow vehicles for Keystone products. Keystone disclaims any liability or damages suffered as a result of the selection, operation, use or misuse of a tow vehicle. KEYSTONE'S LIMITED WARRANTY DOES NOT COVER DAMAGE TO THE RECREATIONAL VEHICLE OR THE TOW VEHICLE AS A RESULT OF THE SELECTION, OPERATION, USE OR MISUSE OF THE TOW VEHICLE. 12/2010