

# Freedom Express

LIGHTWEIGHT AND  
ULTRA-LIGHT TRAVEL TRAILERS



FREEDOM EXPRESS | LTZ | DEEP SLIDES | EXPANDABLES | TOY HAULERS



**Coachmen®**

A division of Forest River, Inc.



## FREEDOM EXPRESS

Freedom Express | LTZ | Expandables | Deep Slides | Toy Haulers

Freedom Express delivers lightweight luxury combined with top-selling floorplans in an affordable, value-added package made for the lighter weight towing needs of today's RVers.

**LTZ**



**Made for today's RVer**



The Ultra-light LTZ, 246RKS offers an innovative floorplan that keeps you fleet of foot with all the comforts of home. Pictured here in Merlot decor package the 246RKS offers integrated cabinetry and a half slide that gives the coach a truly spacious appeal.



Get all the up to date facts and floorplans:

[www.coachmenrv.com](http://www.coachmenrv.com)

View additional photos and the most current floorplans, specifications and other information, plus other valuable links and offers. To find a dealer near you, click on "Shop".

The model 296REDS offers the most spacious living area available. The Liberty Luxury Package with Latte decor (shown) combines raised-panel glazed maple cabinetry with upgrade furnishings and many other amenities to improve your RV experience.



Certified Green

The Freedom Express has received Gold level rating as a certified green RV. Attaining green certification is the result of a process using effective production techniques in combination with healthy materials as well as resource, energy and water efficiency. The result is a better quality RV that satisfies consumer needs with less environmental impact.



# FREEDOM EXPRESS

LTZ | Toy Haulers | Expandables



Freedom Express LTZ Ultra-Light Travel Trailers, Toy Haulers, and Expandables are easy to tow and make RVing easy to enjoy and easy to afford. Designed for mid-size SUVs and crossovers.

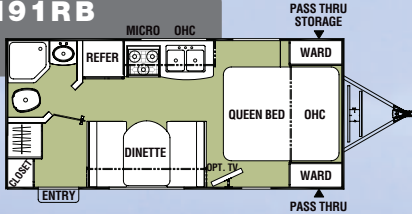


Countertop area in the 19SQX

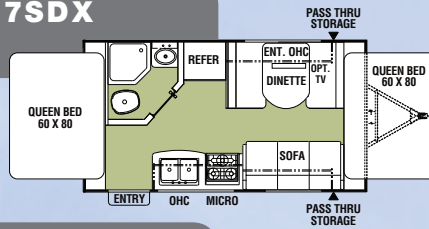


The LTZ 260BL Toy Hauler, with optional Sit-N-Sleep sofa, offers comfortable seating and has plenty of storage.

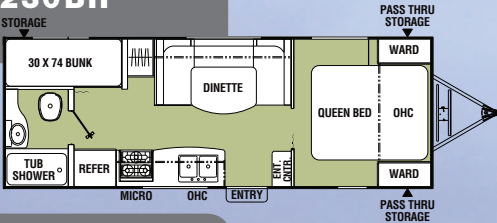
## 191RB



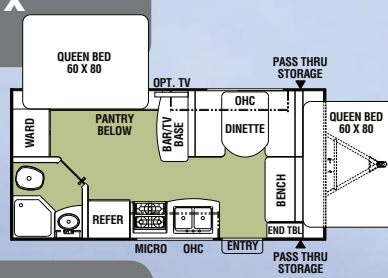
## 17SDX



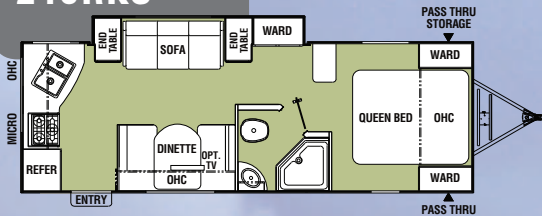
## 230BH



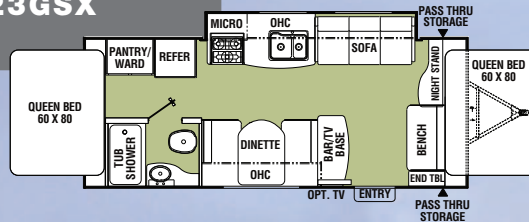
## 19SQX



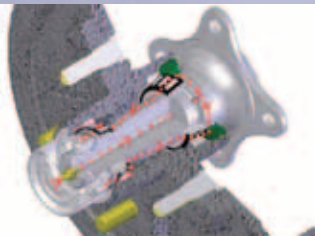
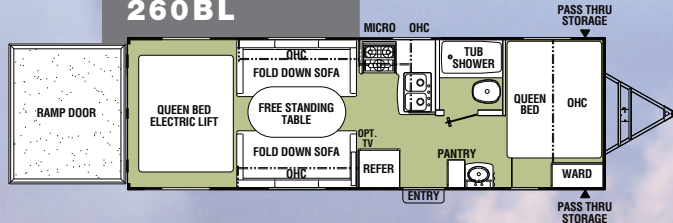
## 246RKS



## 23GSX



## 260BL



Super Lube® hubs simplify routine bearing lubrication



With a Coleman® high output grill or a fully outfitted camp kitchen, the Freedom Express cooks up the right recipe for you.

### Specifications

Base Weight  
Hitch Weight  
Carrying Capacity  
Exterior Length  
Fresh Water gal.  
Gray Water gal.  
Waste Water gal.  
LPG Capacity lbs.

### LTZ Ultra-light (LTZ)

191RB	230BH	246RKS
3390	3795	4305
364	404	495
2310	3109	2695
22'3"	26'4"	27'8"
36	36	36
30	30	30
30	30	30
40	40	40

### Toy Hauler (TH) Expandables (EXP)

260BL	17SDX	19SQX	23GSX
4850	2985	3355	4395
792	442	448	475
2750	957	2445	1480
29'2"	18'0"	19'7"	23'6"
98	36	36	36
30	30	30	30
30	30	30	30
40	40	40	40



The 260BL Hauler loads both fun and convenience.





QX expandable rivals much larger plans. Shown in Merlot decor.



shown here in Aspen Décor, with standard screen wall and offers all the amenities of home, including the garage. Sleeps 6-8 of cargo capacity for your toys too.



Finding space in new places. This under sink cutlery drawer is now right where you need it.



Master Bedrooms, such as the LTZ 246RKS, shown, include generous wardrobe space, queen size Evergreen Sleep System mattresses and ample under-bed storage

## It's All About Lightweight Towability... And Freedom.

**Let's face it.** People don't want to drive a gas guzzler to work every day just so they can pull their trailer on the weekends. So, we designed the Freedom Express to be towed by today's half-ton trucks and SUVs (most models weigh between 3000lbs. and 6000lbs.).

### Here are some reasons to choose Freedom Express.

#### LIGHTWEIGHT TOWABILITY

- **Aluminum structure, vacuum-bond laminated floors and sidewalls** provide the perfect balance between strength and lightweight.
- **Aerodynamic front profile and enclosed underbelly\*\*** cuts through wind and reduces drag created by turbulence under the unit, resulting in easier towing and better fuel economy.
- **Wide stance Stable-Ryd® spread axle design** places the tires farther apart from side to side and adds an additional 9" between the axles. The wider base equals better tracking and a smoother tow.
- **Nitrogen-filled radial tires** give you a better ride than bias tires and nitrogen doesn't expand and shrink like air, so you get more consistent tread-wear.
- **All holding tanks** are below floor increasing interior storage and lowering center of gravity for improved towability.

#### UPGRADED COMPONENTS

- **Super-Lube® hubs** simplify bearing lubrication.
- **Power Package\*\*** – Fast, push button setup and breakdown means NO CRANKING, and more time for the fun stuff.
- **Coleman® grill station\*** – High pressure burner system designed for outdoor use and is completely portable. Can be used in self-storing tray or removed for a picnic or tailgate.
- **Painted fenders\*\*** – Automotive base coat, clear coat process will look great for years and won't fade like rough plastic fenders.
- **3M breathable graphics** – reduces fading, bubbles and peeling so your graphics stay looking great.
- **Single piece seamless countertops with waterfall edge** – the look of composite, but lightweight, and no plastic T-molding to pop out or trap crumbs and water.
- **9 Beauflor® resilient flooring** – not your standard linoleum – looks like tile and is non-slip, non-mold/mildew, won't shrink, has a 2-year cold crack guarantee, and has a 7-year wear warranty.
- **Furniture grade cabinetry with hardwood doors** (mortise and tenon construction) and drawer fronts. Lumber Core stiles are pocket drilled and screwed together, not stapled and glued.
- **Evergreen® sleep system mattress** – hypo-allergenic, lighterweight and more comfortable than innerspring mattresses.

#### THOUGHTFUL CONVENIENCE ITEMS

- **Nearly 45 cu. ft. of expanded pass-through storage.**
- **Standard spare tire mounts under tongue** for easy access, and leaves the bumper free for your bike rack.
- **Satellite/cable ready RG6 hookup.**
- **Outside shower** close to termination valves.
- **Speakers** – 2 or 4 interior speakers. 2 marine grade speakers outside.\*
- **Dual 20 lb. LP gas tanks** – a little lighter, and much easier to refill or swap out.
- **24" Diamond plate rock guard** is big enough to protect the front from road debris.
- **Large folding entry assist handle.\*\***
- **Under-sink silverware drawer** – Wasted space made usable by our custom design.
- **Punched hanging rods in closets** keep hangers from sliding and falling off during travel.
- **Foot flush toilet** – convenient and sanitary.
- **Night stand with outlet** on both sides of island beds for your alarm clock, book, or a glass of water.



## FREEDOM POWER PACKAGE \*\*

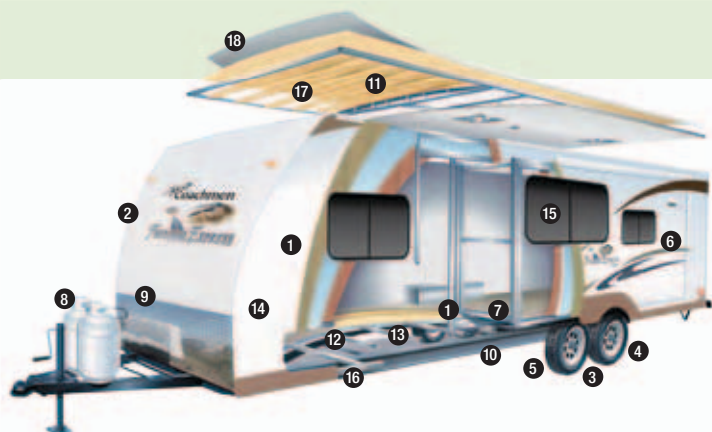
- Power tongue jack.
- Front and rear power stabilizer jacks.
- Power awning with automatic rain dump and tilt.
- Upgraded touch screen stereo with built in DVD.

## LIBERTY LUXURY PACKAGE — DEEP SLIDE UPGRADE

- Raised panel glazed maple doors (living area).
- Raised panel refer insert.
- Hinged doors to under-dinette storage.
- Latte décor with leatherette sofa and chairs (select models).
- Upgraded lighting over dinette area.
- Bronzed kitchen wall décor with LED accent lighting.
- 26" LCD TV replaces 19" TV.
- Outside TV hookup under awning.
- Black tank flush system.
- LCI power remote system operates stabilizer jacks, main slideout, power awning and porch light.

Available Options	LTZ	EXP	TH	FE	DS
Convenience Package	Incl	Opt	Incl	N/A	N/A
Aluminum Wheels	Opt	Opt	Incl	Incl	Incl
Coleman® Hi-output Grill	Opt	Opt	Opt	Incl	Incl
12V 19" LCD TV	Opt	Opt	Opt	Incl	Incl
Elec. Track Queen Bed	N/A	N/A	Opt	N/A	N/A
Elec. Track Sit-N-Sleep Sofa	N/A	N/A	Opt	N/A	N/A
Rear Screen Wall	N/A	N/A	Incl	N/A	N/A
15,000 BTU A/C	Opt	Opt	Opt	Opt	Opt
Air Mattress Hide-A-Bed Sofa	N/A	N/A	N/A	N/A	Opt
Free-Standing Dinette w/4 Chairs	N/A	N/A	N/A	N/A	Opt
Stow-N-Go Storage Door	N/A	N/A	N/A	Select	Select
Freedom Camp Kitchen	N/A	N/A	N/A	Select	Select
Liberty Upgrade Package	N/A	N/A	N/A	N/A	Opt

For a complete list of features and options go to [CoachmenRV.com](http://CoachmenRV.com)



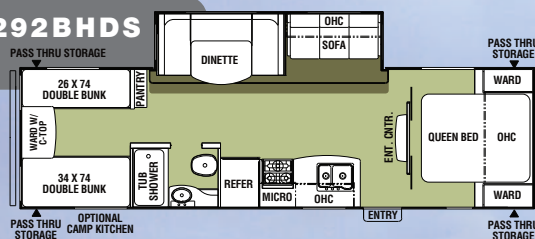
1. Aluminum-structure, vacuum-bonded sidewalls and flooring
2. Aerodynamic front profile
3. Stable-Ryd® spread axle design
4. Nitrogen filled radial tires
5. Super-Lube® axle hubs
6. 3M breathable graphics
7. Beauflor® laminate flooring
8. Dual 20lb. LP gas tanks
9. 24" diamond plate road shield
10. Powder E-coated, welded I-beam frame
11. Trussed crossmembers
12. Enclosed, heated underbelly
13. Fully welded tubular aluminum floor structure
14. Smooth exterior fiberglass skin
15. Tinted, safety glass windows
16. Happijac SureTrac™ rack and pinion slide systems
17. Crowned aluminum reinforced roof
18. EDPM rubber roofing

\*Optional on LTZ models \*\*N/A LTZ models

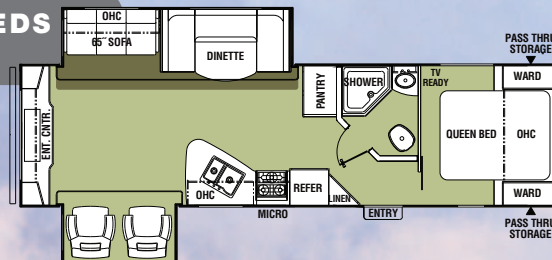


242RBS shown in Toffee decor.

### 292BHDS



### 296REDS



Pushbutton set-up with electric front and rear stabilizer jacks — part of the Freedom Power Package.



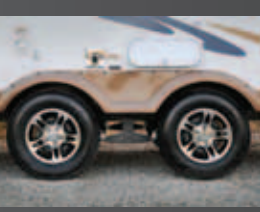
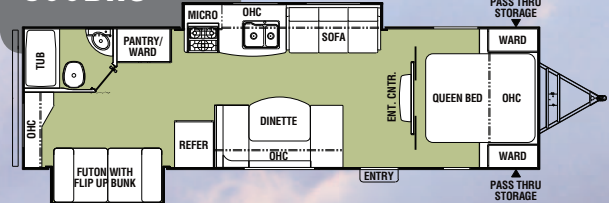
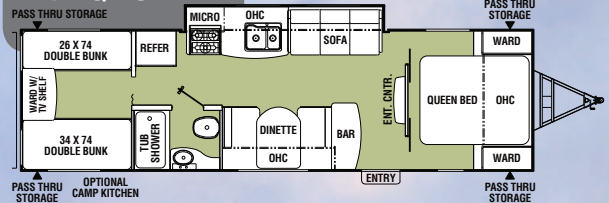
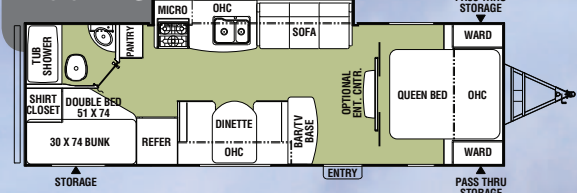
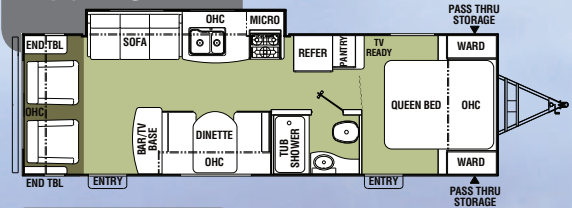
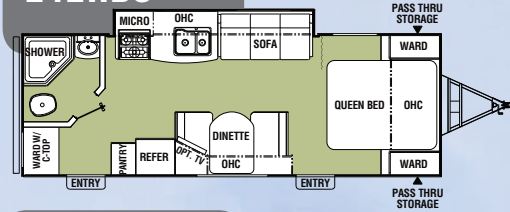
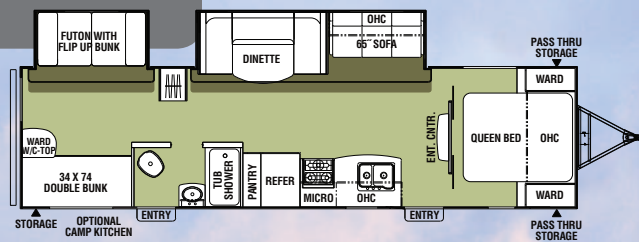
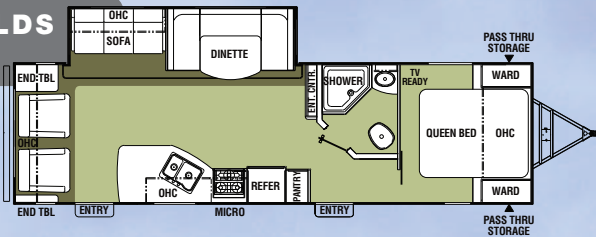
Stable Ryd® spread axle design spreads weight over wider area, reducing tongue weight and improving handling on the road. (N/A LTZ)



Light on weight but heavy on storage.



Freedom Express	Deep Slide Models
-----------------	-------------------



Heated, fully enclosed undercarriage extends the camp season, keeps out pests, protects plumbing and electrical systems and improves aerodynamics. (N/A LTZ)

[illegible]





### Constant and Never Ending Improvement

At Forest River we are proud to say that quality is our first priority. In addition to quality assurance personnel working on the production line, our Pre Delivery Inspection (PDI) facilities act as a third party to provide product inspections and feedback critical to maintaining and improving the quality of our products and processes. On a daily basis, random units are pulled for inspection and then gone through "with a fine tooth comb." Any findings are reported back to managers at the individual plants. This daily feedback allows us to quickly identify issues, implement solutions, generally within 24 hrs, and monitor results to ensure the issue has been resolved. We constantly strive to improve the quality of the products we build and our PDI facilities are one of the tools that make a difference and are so important to the process.

### Forest River encourages you to buy locally from your hometown dealer.

Local purchases allow you to establish a relationship with a dealer close to home. This relationship provides you with a convenient location for service and support from a hometown professional.

As a rule, our dealers are independently owned and operated, and have the choice as to whether to provide warranty service on products that were purchased elsewhere. Many dealers will service products not purchased at their place of business, but their priority generally will be their own customers first, followed by owners of Forest River products traveling away from their local dealer. There may be instances that would require you to return to the point of purchase to satisfy warranty requirements.

For our Canadian customers, there are also requirements which must be met to bring an RV purchased outside of the country to their home, including additional inspections, certifications, taxes and fees. Your local Canadian dealer handles all the details for you, as well as providing a convenient place for service and warranty.

Forest River's goal is for all RV owners to fully enjoy their RV experience. We hope you will consider the advantages of buying locally, and encourage you to be thorough as you determine what product to purchase and which dealer to purchase it from. Both will be key in your ultimate satisfaction and realization of your dreams.

### Big benefits for new owners



**Owners club discounts and more** — A free one-year membership in the Coachmen Owners Association comes with the purchase of any Coachmen product. This add-on value not only provides a host of travel services and campground discounts, but also a 24/7 online service that locates needed services while offering member savings at more than 180,000 merchants across the country. And, of course, the COA is an excellent way to share experiences with other Coachmen owners through rallies and caravans.

### Free roadside assistance



Coachmen provides one year of free Travel Easy™ emergency roadside assistance for those who buy a new Coachmen RV. Administered by Coach-Net®, this service gives Coachmen owners 24/7 access to operational, technical and emergency road services, including towing, fuel delivery, jump starts, lockout service, tire changes, mobile mechanic and unlimited technical advice. So no matter where you go, we're ready to help!



**Coachmen Recreational Vehicle Company, LLC**  
**P.O. Box 30, Middlebury, IN 46540**

To see how Coachmen is making the easy life even easier, visit **CoachmenRV.com** or call 1.800.353.7383.

All information contained in this brochure is believed to be accurate at the time of publication. However, during the model year, it may be necessary to make revisions, and Coachmen reserves the right to make all such changes without notice, including changes in prices, colors, materials, equipment and specifications, as well as the addition of new models and the discontinuance of models shown in this brochure. Therefore, please consult with your Coachmen dealer and confirm the existence of any materials, design or specifications that are material to your purchase decision.

Scan this barcode using a QR Reader on your smart phone to learn more about Forest River.

