

# WILDWOOD

## SPORT

Welcome to the new Wildwood "SPORT" Toy Hauler, America's most versatile camper. These models were not only engineered as serious Toy Haulers, they are also carefully designed for the family campers who want to take some extra FUN on their outdoor adventures. Designed with a lot of "ATTITUDE" and built as "TUFF AS NAILS", take a look at why America is making Wildwood it's #1 choice in today's Sport Haulers market.

**XL LITE WIDE BODY:** GEARED FOR TODAY'S 1/2 TON TRUCKS AND SUVs (23FLSRV-SHOWN)



**XL FIFTH WHEELS:** 12' BOX, WIDE BODY, TRIPLE AXLES, WITH GELCOAT FIBERGLASS EXTERIOR (376SRVBS-SHOWN)



# WILDWOOD XL LITE TOY HAULERS



23FLSRV  
SHOWN W/ TRADITIONAL ALUMINUM EXTERIOR

## XL LITE STANDARDS

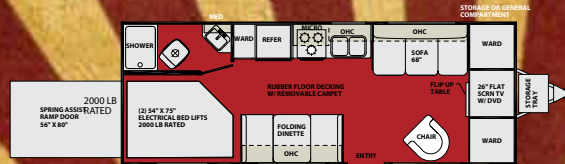
- Wide body (102")
- Fantastic™ fan in bathroom
- Swing arm entry assist handle
- Black frame tinted windows
- 13.5k air conditioning
- 6 gal. gas/ electric water heater
- Generator prep (FW)
- One piece nickel tread cargo area
- Diamond plate rolled side metal
- Fluorescent lighting
- Dual electric queen beds in cargo area
- 26" LCD/HD flatscreen TV
- AM/FM stereo with CD/DVD & MP3
- E-Track tie-down system

## XL LITE OPTIONS

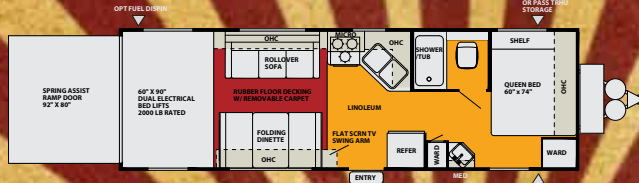
- 15K BTU A/C IPO 13.5
- Deluxe gel-coat fiberglass exterior
- 4.0 kw Onan gas generator
- Thermostatically controlled heated tanks
- Night shades
- Carefree add-a-wall
- iPod docking station
- Exterior speakers
- Front electric jacks
- Optional fuel station
- Washdown kit w/quick disconnect

## XL LITE FLOORPLANS

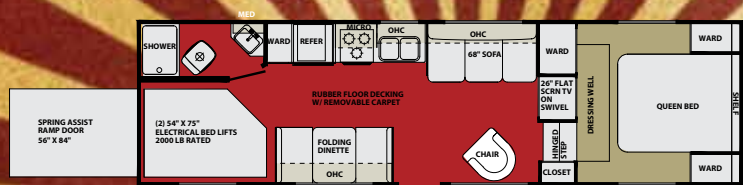
T23FLSRV



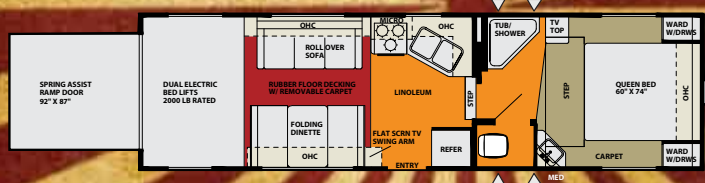
T27FBSRV



F266FSRV



F286FBSRV



## XL LITE SPECS

	T23FLSRV	T27FBSRV	F266FSRV	F286FBSRV
Hitch Weight (lb)	655	845	1380	1615
Axle Weight	5565	5894	6385	7059
Dry Ship Weight	6220	6739	7765	8674
GVWR	10815	11005	11540	11775
CCC (Cargo Capacity)	3653	3345	3316	3101
Ext Length	27'10"	32'0"	30'1"	TBA
Ext Height	11'1"	11'1"	12'0"	12'0"
Int Height	80"	80"	84"	84"
Fresh Water Cap (gal)	80	80	80	80
Black Water Cap (gal)	32	32	32	32
Grey Water Cap (gal)	32	62	62	62
Tire Size (in)	15"	15"	15"	15"
Awning Size (ft)	20'	20'	20'	20'

\* Add Approximately 350 Lbs. for Fiberglass Exterior

XL Lite 23FLSRV  
Shown with Onyx Interior



XL Lite 23FLSRV  
Shown with Onyx Interior



# WILDWOOD XL FIFTH WHEELS

## XL STANDARDS

- Deluxe gel-coat fiberglass exterior
- Wide body (102")
- 12' box in cargo area
- 26" LCD TV
- AM/FM CD stereo w/ DVD player
- 15" aluminum rims
- 50 amp electrical service
- Triple axle
- Water filter system (10,000 gal.)
- Fantastic fan in bathroom
- Swing arm entry assist handle
- Slate linoleum
- Black frame tinted windows
- 13.5k ducted air
- Shower surround w/ glass door
- 6 gal. gas/ electric water heater
- Generator box w/ wire
- Optional fuel station (gasoline)
- E-Track tie-down bars
- Dove tail cargo area
- Vapor barrier wall
- One piece diamond tuff deck cargo area
- Diamond plate tolled side metal (ext.)
- Diamond tuff deck ramp threshold
- Minimum 84" ceiling heights

## XL OPTIONS

- 10 gallon G/E water heater
- 15K BTU A/C IPO 13.5
- 5.5 kw Onan gas generator
- Dual electric queen beds in cargo area
- Free standing table and chairs
- Thermostatically controlled heated tanks
- Day/night shades
- Carefree add-a-wall
- Double hide-a-bed
- iPod docking station
- Exterior speakers

XL376SRVB5



## XL FLOORPLANS



## XL SPECS

	356SRV	376SRV	376SRVB5
Hitch Weight (lb)	2400	2550	2640
Axle Weight	8995	9590	10815
Dry Ship Weight	11395	12140	13455
GWR	17000	17790	17880
CCC (Cargo Capacity)	4662	5650	4425
Ext. Length	36'5"	38'8"	41'8"
Ext. Height	12'2"	12'2"	12'2"
Int. Height	84"	84"	84"
Fresh Water Cap (gal)	84	84	84
Black Water Cap (gal)	32	32	32
Grey Water Cap (gal)	64	64	64
Tire Size (in)	15"	15"	15"
Awning Size (ft)	21'	21'	21'

Diamond Tuff Deck  
Skid resistant floor [STD]

## XL LITE AND XL SERIES DECORS



ONYX

SMOKE



# WILDWOOD SPORT

# WILDWOOD SPORT TOY HAULERS

29 FBSRV

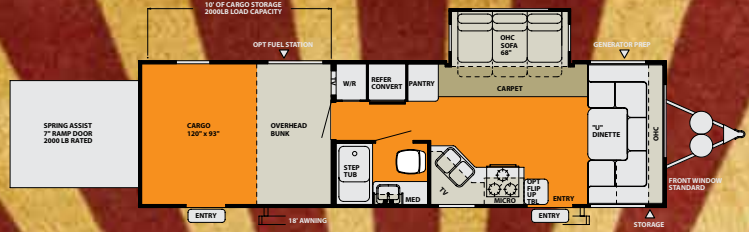


## SPORT FLOORPLANS

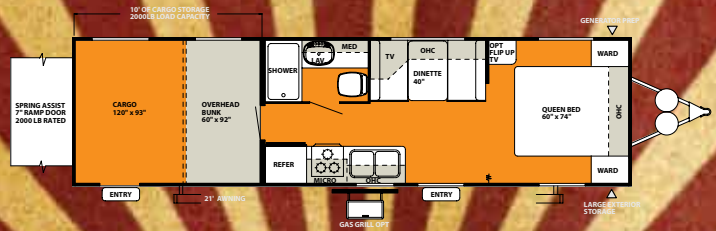
26FBSRV



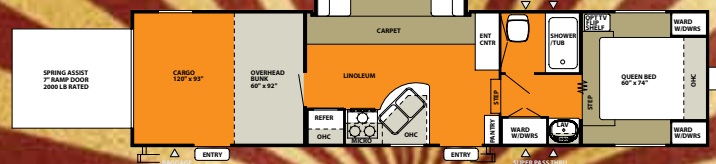
27SRVS



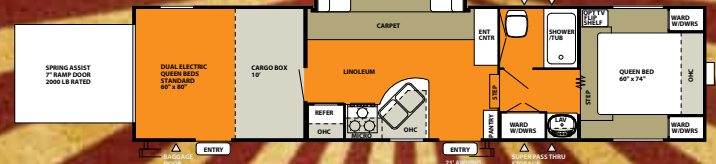
29FBSRV



32SRV



32SRV-LE



## SPORT STANDARDS SPORT DECORS

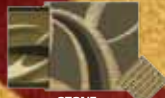
- 3/8 walk on roof
- Upgraded graphics package
- Diamond plate rock guard (TT)
- Dove tail cargo (most floorplans)
- Swing arm entry assist handle (FW)
- Generator box and wire
- Heated fresh water tank
- 7' ramp door w/extension
- 6 - 8,000 lb. D-rings
- 2,000 lb. cargo capacity



COFFEE



MOSS



STONE



ONYX



WINE

## SPORT OPTIONS

- 4.0 gas generator or 3.6 LP
- Electric front jacks
- Ducted A/C
- Exterior speakers
- Care free add-a-wall
- Hid-n-screen wash down kit
- Fuel station - 28 gallons
- Indoor/outdoor carpet
- Tuff deck flooring
- Tinted glass
- 15K ducted AC

## SPORT SPECS

	26FBSRV	27SRVS	29FBSRV	32SRV
Hitch Weight (lb)	950	1515	1310	2040
Axle Weight	5580	5965	6170	7570
Dry Ship Weight	6510	7675	7480	9610
GVWR	11110	11675	11470	14040
CCC (Cargo Capacity)	4012	4000	3402	3626
Ext Length	28' 6"	31' 3"	33' 6"	34' 6"
Ext Height	11' 6"	11' 6"	12' 2"	12' 2"
Int Height	80"	80"	80"	84"
Fresh Water Cap (gal)	70	70	70	70
Black Water Cap (gal)	32	32	35	32
Grey Water Cap (gal)	43	32	32	64
Tire Size (in)	15"	15"	15"	16"
Awning Size (ft)	21'	18'	18'	21'

## PEACE OF MIND

Forest River has yet another exclusive feature to offer: One year of free roadside assistance will be given to every Wildwood Sport customer. This is just one more way to say "Thank you" and to ensure an enjoyable traveling experience.

YOUR WILDWOOD SPORT DEALER



**FOREST RIVER, INC.**  
 914 C.R. 1  
 Elkhart, IN 46514  
 574.533.5934  
[www.forestriverinc.com](http://www.forestriverinc.com)  
[www.forestriveraccessories.com](http://www.forestriveraccessories.com)

All specifications contained herein are based on the latest product information at time of printing. Forest River reserves the right to make changes in colors, materials, equipment and specifications at any time without notice and assumes no responsibility for any errors in this brochure.