

SALEM

# Villa

SERIES  
DESTINATION TRAVEL TRAILERS



DESIGNED FOR COMFORTABLE LIVING



SALEM

# VILLA

*Classic*



372REDS Front to Back View shown with Chocolate La-Z-Boy® Decor





382BHDS Back to Front View shown with Canyon Decor



382BHDS Slide Area



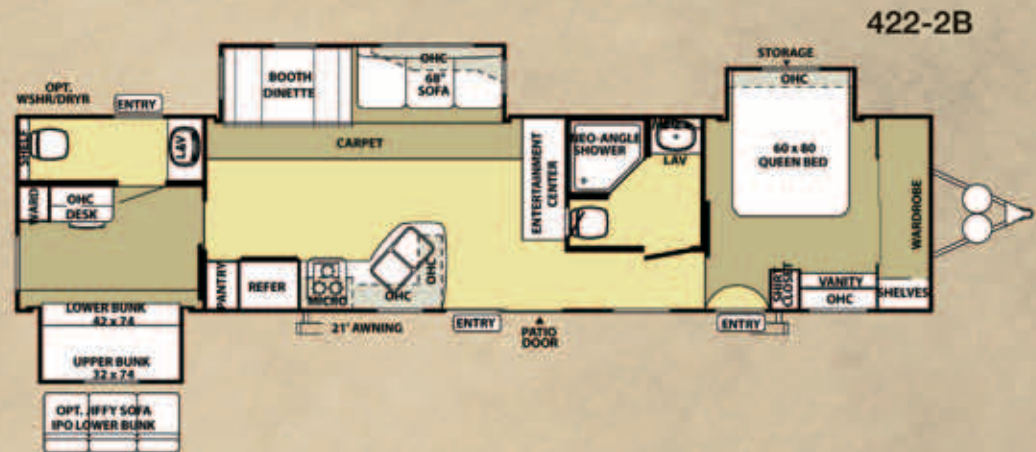
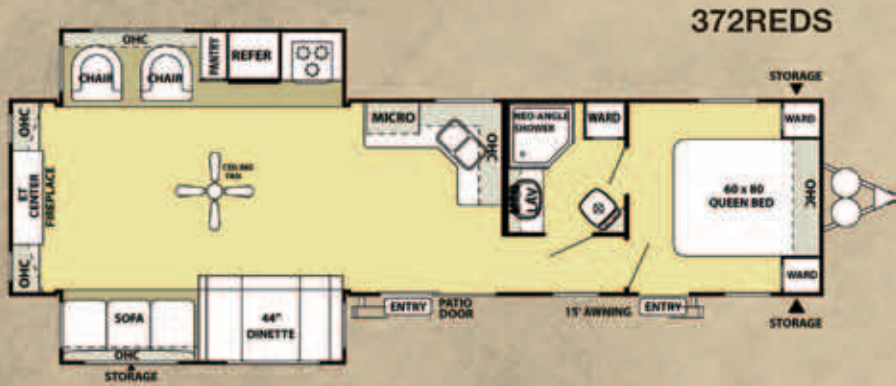
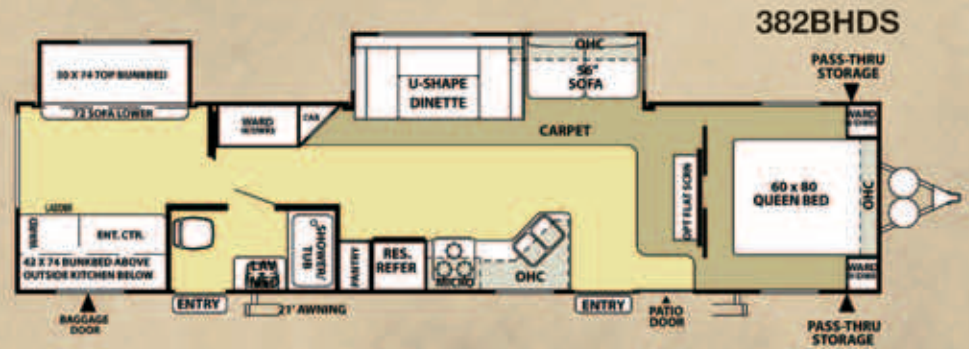
382BHDS Bunk Area

The Salem Villa Series is built and furnished like a fine home to offer you the best in mobile living. You will find Salem coaches in a variety of popular lengths with plenty of family tested floorplans to choose from.

Simplicity coupled with serenity can be a dangerously successful combination. It's no wonder Salem's Villa Classic has been turning heads since its inception. Our new 8' wide, 84" interior height coach boasts increased storage area allowing you to bring more of home with you. From self-edge countertops to our oversized, u-shape dinette (382BHDS only) and large picture windows, you'll be sure to enjoy good old "Classic" comfort.

The rear bunk area is a great entertainment area, but is also a spacious second bedroom. It offers plenty of room to stretch out, and an abundance of natural light from it's large picture windows. The bunks in the Villa Series are rated for 300 Lbs..

# VILLA CLASSIC FLOORPLANS



## SALEM VILLA CLASSIC SPECIFICATIONS

	353FLFB	372REDS	382BHDS	422-2B
Hitch Weight (lb)	1290	1005	1015	1185
Axle Weight	7330	TBA	7500	8925
Dry Ship Weight	8620	9040	8515	10110
GVWR	11450	11165	11175	13185
CCC (Cargo Capacity)	2770	2066	2600	3016
Ext Length	38' 6"	38' 7"	37' 8"	42' 2"
Ext Height	11' 9"	11' 9"	11' 9"	11' 9"
Int Height	84"	84"	84"	84"
Fresh Water Cap (gal)	42	42	42	42
Black Water Cap (gal)	43	43	43	35
Grey Water Cap (gal)	43	43	43	43
Tire Size (in)	15"	15"	15"	15"
Awning Size (ft)	21'	21'	21'	21'

# VILLA CLASSIC STANDARDS AND OPTIONS

## COMFORT AND CONVENIENCE

- 84" interior height and 8' wide
- Black framed tinted safety glass windows
- Water heater by-pass
- 6-gallon gas/electric DSI water heater
- Double entry doors (most floorplans)
- Large Pass thru storage (per floorplan)
- Dometic® 13,500 BTU central air conditioner w/ quick cool feature
- In-floor ducted heat with 35K BTU furnace
- Stain resistant carpet with padding
- Flush-floor slide rooms
- Systems monitor panel
- 6' 2" tall slide rooms
- Black tank flush
- Ultra lube axles
- Solid wood drawer fronts with ball bearing drawer glides
- 2 outside speakers
- beauflor™ Durabac flooring

## KITCHEN

- 12-volt power range hood with light
- Microwave with carousel (black)
- Acrylic 60/40 residential style kitchen sink
- Sink cover
- Built in knife holder
- Kitchen base cabinet with recess at floor level
- 3 burner Piezo ignition range oven
- Pull out sprayer faucet at kitchen sink
- Kitchen waste basket
- Pantry with shelves
- Mission style cabinet doors and drawer fronts

## LIVING ROOM

- Swivel rocker chair(s) (per floorplan)
- AM/FM/CD stereo system with remote control
- Surround sound with TV hook-up
- TV antenna w/ booster
- Cable and satellite ready

- Extra large picture window at dinette
- Extra large 44" pedestal dinette for more comfortable dining and sleeping
- Hard lambrequin valance
- Decorative lights mounted in slide-out

## BEDROOM

- Serta Bradley Mattress
- Fitted bedspreads
- Bedroom roof vent
- Lift-up beds with gas struts
- 300 lb. bunk rating
- Cable TV hook-up
- Stain resistant carpet with padding
- Privacy doors or sliding curtain (per floorplan)

## BATHROOM

- Built-in wood medicine cabinet and mirror
- Ceiling light with convenient wall switch
- China foot flush toilet(s)
- ABS tub and shower with one-piece surround

## EXTERIOR

- Smooth fiberglass radius baggage doors with thumb pulls and holdbacks
- A & E side awning one-piece vinyl
- Diamond plate rock guard
- Steel framed 30" smooth fiberglass radius entry door
- 15" radial tires
- Entry assist handle
- 2-30 lb. LP tanks with automatic change over
- EZ access LP tank cover
- City water fill

## CONSTRUCTION

- 10" Extruded I-beam frame
- Cambered chassis
- Fresh water tank
- 2" x 3" floor joists 12" on center
- 5/8" 5-ply tongue and groove plywood floor decking

- 2" wall studs maximum 16" on center
- Steel framed 6' entrance doors
- 5" bowed truss roof rafters
- 3/8" walk-on roof decking
- Seamless one-piece rubber roof w/ 12 year warranty
- R-7 insulation

## SECURITY AND SAFETY

- Smoke detector
- Fire extinguisher
- Carbon monoxide detector
- LP gas leak detector
- Amber porch light with interior switch
- Screen door with safety latch (per floorplan)
- GFI receptacles and covered patio outlet
- Welded heavy duty safety chains
- Hitch light
- E-Z open entry steps
- Lockable fiberglass radius baggage doors
- ANSI 119.5
- Certified to meet all National Highway Traffic Safety Administration Specifications

## POPULAR OPTIONS

- Fiberglass exterior
- Patio door (some models)
- 10-gallon gas/electric DSI water heater
- Skylight over tub
- Extra large 8 cu. ft. double door RV refrigerator
- Double sofa air hide-a-bed

- Free standing dinette with 4 chairs and flip leaf
- Phone jack
- Bar stools (per floorplan)
- Stabilizer jacks
- Outside shower
- Spare tire, carrier and cover
- Double insulation (floor and roof)
- Cloth pull down night shades



Optional exterior kitchen available on the Villa Classic 382BHDS

## SALEM VILLA CLASSIC SERIES DECOR OPTIONS

Butterscotch Interior



LABOY

Canyon Interior



Chocolate Interior



LABOY

Soapstone Interior



SALEM

# VILLA

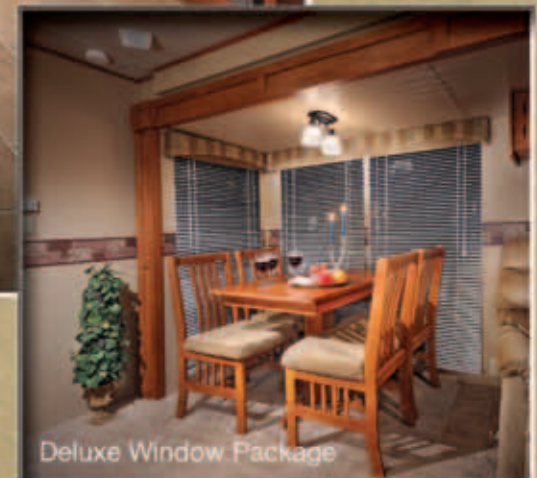
*Estate*



393FKDS Back to Front View shown with Chocolate La-Z-Boy® Decor

"There's no place like home."

We, at Salem, understand the importance of bringing residential living to the outdoors. That's why you'll find a plethora of amenities aimed at providing the most comfortable experience possible. Aside from our spacious 102" wide body design with 84" interior heights, new Vigor Cherry raised panel cabinetry and such luxuries like our Deluxe Window Package, 26" Flat Screen TV's (select models), Residential Refrigerator, Free Standing 4-Burner Range, and our exclusive Serta® Mattress. With multiple floorplans to choose from, let Salem's Villa Estate be your "home away from home."



Deluxe Window Package





403FB Bedroom



393FKDS Bedroom



408FLFB Bathroom



393FKDS Living Area with Fireplace

# Grand Villa



408FLFB Shown With Butterscotch La-Z-Boy® Decor

FOREST RIVER  
EXCLUSIVE  
LAWSON  
LAWSON





408FLFB Gourmet Kitchen



408FLFB Bedroom



408FLFB Bath

“Luxury you can afford”

The Salem Grand Villa, without a doubt, sets the bar for luxury in the destination camping market. Our 8’ interior ceiling heights and 102” wide body design open up possibilities that have never been offered before. Where else will you find a dishwasher, garbage disposal, undermount sink and a faucet with pull-out sprayer? Only in Salem’s Grand Villa.

# Grand Villa



408FLFB Shown With Butterscotch La-Z-Boy® Decor



## VILLA ESTATE and GRAND VILLA FEATURES

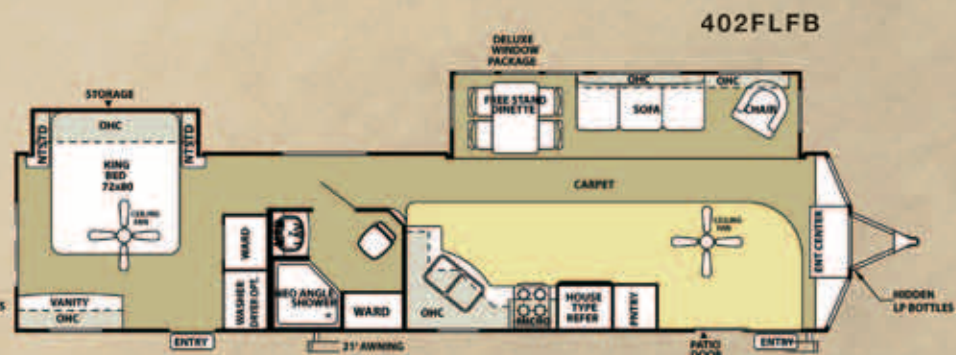
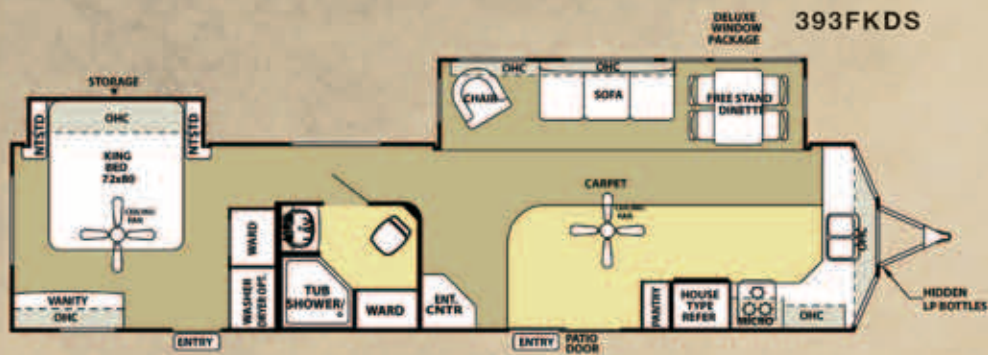
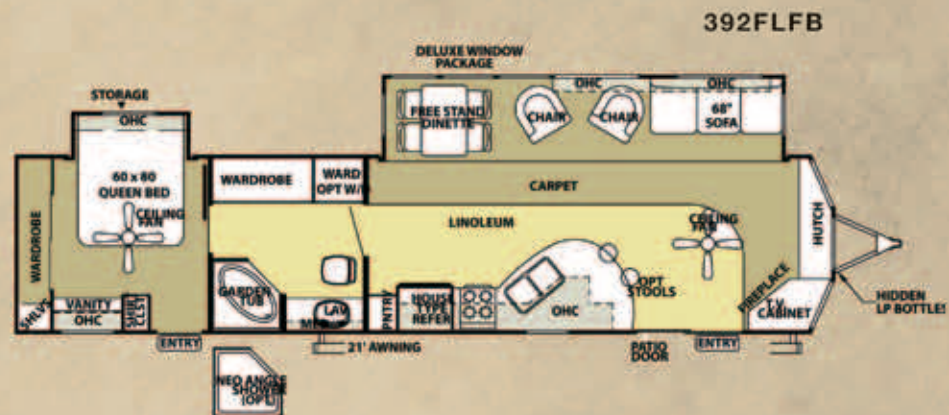
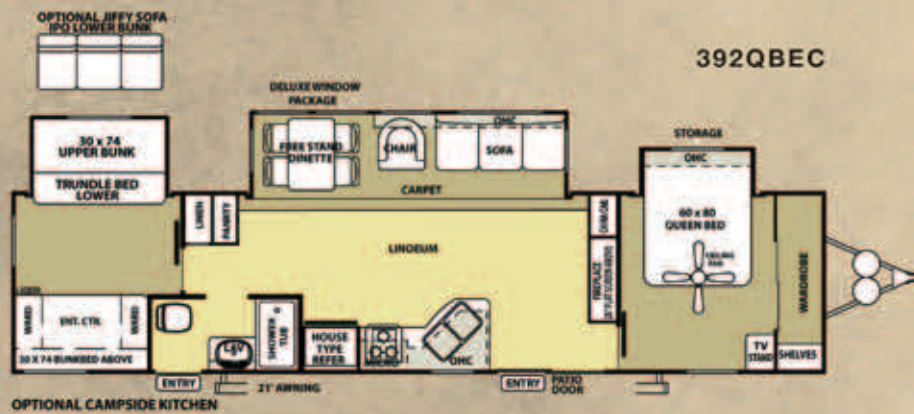
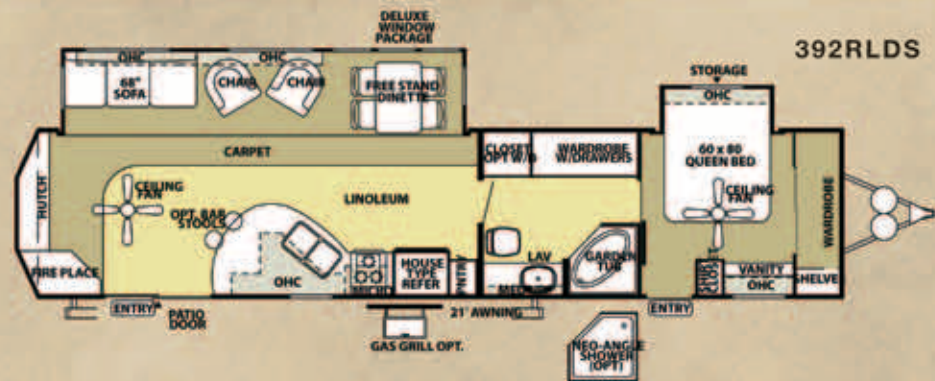
- A. Whole Unit Water Filtration System
- B. Full Extension Ball Bearing Drawer Guides
- C. Weather Proof Exterior Speakers
- D. Cloth Night Shades
- E. Satellite/Cable Hook-up
- F. Comfort Flex™ Bed Frame
- G. 5/8" Tongue in Groove Floor Decking
- H. Self Edged Countertops
- I. Single Lever Pull-Out Sprayer Faucet
- J. Triple Raduised Entry Steps
- K. Residential 18' Cu.Ft. Refrigerator with Ice Maker
- L. Free Standing Dinette
- M. beauflor™ Linoleum Flooring
- N. Serta® Dreamscape Mattress
- O. Porcelain Foot Flush Toilet
- P. Fantastic™ Fan
- Q. 60" Patio Door with Amber Safety Light
- R. Black Framed Tinted Windows with Safety Glass
- S. Free Standing Range with 20" X 20" Door
- T. 20 Gallon Electric Water Heater

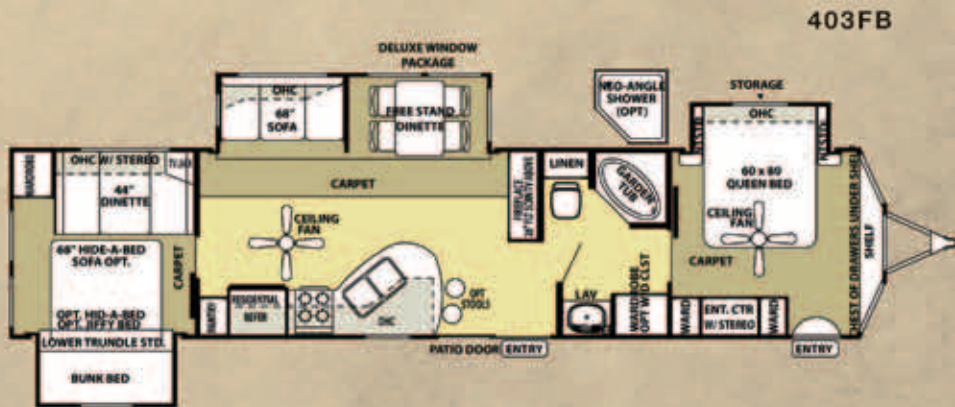
### GRAND VILLA UPGRADES

- U. Standard Ceiling Fan(s)
- V. Frost Resistant Water Spigot
- W. Whirlpool® Dishwasher
- X. Electric Fireplace

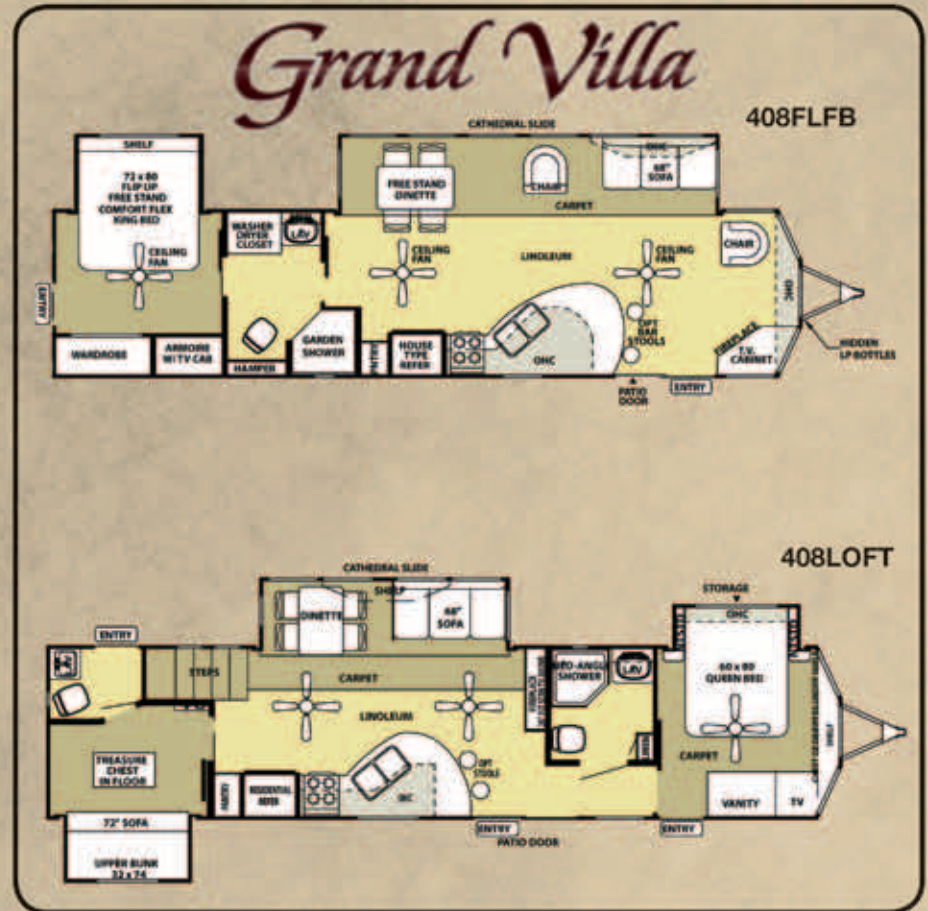


# VILLA ESTATE and GRAND VILLA FLOORPLANS





Optional exterior kitchen available on the Villa Estate 392QBEC.



**SALEM VILLA ESTATE/GRAND VILLA SPECIFICATIONS**

	392F8RB2Q	392RLDS	392QBEC	392FLFB	393FKDS	402FLFB	403FB	408FLFB	408LOFT
Hitch Weight (lb)	1000	1150	1405	1500	1550	1670	1385	1790	1515
Axle Weight	8600	8980	9175	8700	8520	8415	9685	9405	10685
Dry Ship Weight	9600	10130	10580	10200	10070	10085	11070	11195	12200
GVWR	11400	11310	11805	11660	11950	13670	13385	13790	13515
CCC (Cargo Capacity)	1740	1120	1225	1400	1820	3525	2255	2536	1256
Ext Length	42'	42'	42'	42'	42'	42'	42'	38' 3"	41' 6"
Ext Height	11' 9"	11' 9"	11' 9"	11' 9"	11' 9"	11' 9"	11' 9"	12' 9"	12' 9"
Int Height	84"	84"	84"	84"	84"	84"	84"	96"	96"
Fresh Water Cap (gal)	42	42	42	42	42	42	42	60	60
Black Water Cap (gal)	35	45	45	27	45	45	35	43	86
Grey Water Cap (gal)	43	43	43	38	64	43	43	43	86
Tire Size (in)	15"	15"	15"	15"	15"	15"	15"	15"	15"
Awning Size (ft)	21'	21'	21'	21'	21'	21'	21'	25'	25'

All lengths include bumper and hitch



# VILLA ESTATE and GRAND VILLA STANDARDS, OPTIONS AND UPGRADES

## COMFORT AND CONVENIENCE

- 102" exterior width for increased living space
- 84" interior height (Estate)
- Black framed tinted glass windows
- WaterPur™ whole house water filtration system
- Water heater by-pass
- 20-gallon electric water heater
- Ducted Dometic® 15,000 BTU central air conditioner w/ quick cool feature
- In-floor ducted heat w/ 40K BTU furnace
- Stain resistant carpet w/ padding
- Beau Floor Durabac Flooring
- Flush-floor hydraulic slide rooms w/ manual override
- Systems monitor panel
- 50 amp electrical service and 65 amp 12 volt converter
- Solid hardwood drawer fronts
- 26" LCD/HD TV (select floorplans)

## KITCHEN

- 20" freestanding 4 burner gas range w/ oven (black)
- 18 cu. ft. residential electric refrigerator w/ icemaker (black)
- Microwave with carousel and range hood (black)
- Undermount stonecast 60/40 residential style sink
- Pull out sprayer faucet
- Sink cover (1)
- Pantry (per floorplan)
- Self edge countertops throughout

## LIVING ROOM

- Swivel rocker chair(s) (per floorplan)
- AM/FM/CD/stereo system w/ remote control
- Forest River sound system w/ 100 watt subwoofer for true surround sound
- Surround sound TV hook-up
- TV antenna w/ booster
- Cable and satellite door side hookup
- 60" glass sliding patio door w/ vertical blinds
- Extra large panoramic window at dinette
- Angled overhead cabinets
- Coordinating wallpaper border

## BEDROOM

- Serta® mattress standard all king and queen beds
- Comfort flex steel bed frame w/ lift system
- Bedspreads
- Bedroom roof vent
- TV shelf
- Cable TV hook-up
- Stain resistant carpet w/ padding
- Solid privacy doors
- 300 Lb. Bunk rating

## BATHROOM

- Built-in wood medicine cabinet and mirror
- Ceiling light w/ convenient wall switch
- China foot flush toilet(s)
- ABS tub and shower w/ one-piece surround w/ curtain
- Oversized garden tub (per floorplan)
- 12" 10-blade Fantastic Bath Fan™
- Toothbrush holder and towel ring

## EXTERIOR

- Smooth fiberglass radius baggage doors
- A & E side awning one-piece vinyl
- Diamond plate rock guard (n/a 392FLFB, 403FB)
- 15" radial tires (per floorplan)
- 30 lb. double LP tanks w/ automatic change over
- EZ access LP tank cover
- City water fill w/ brass valve
- Swing out assist handle

## CONSTRUCTION

- 12" forged I-beam frame
- Cambered chassis
- Seamless holding tanks
- Color coded water lines
- 2" x 3" floor joists 12" on center
- 5/8" 5-ply tongue and groove plywood floor decking
- 2" wall studs maximum 16" on center
- Steel framed 6' patio doors
- 5" bowed truss roof rafters
- 3/8" walk-on roof decking
- Seamless one-piece rubber roof w/ 12 year warranty
- Double wipe slide-out seal
- R-7 insulation throughout (floors, walls, ceilings, and slide-outs)
- Galvanized steel wheel wells w/ fiberglass insulation

## SECURITY AND SAFETY

- Smoke detector
- Fire extinguisher
- Carbon monoxide detector
- LP gas leak detector
- Flush door latch w/ integral dead bolt lock
- Main entry step light w/ interior switch
- Amber porch light w/ interior switch
- Main entry doorside flood light
- Screen door w/ safety latch
- GFI receptacles and covered patio outlet
- Welded heavy duty safety chains
- Hitch light
- EZ open entry steps
- Lockable fiberglass radius baggage doors
- ANSI 119.5
- Certified to meet all National Highway Traffic Safety Administration Specifications

## POPULAR OPTIONS

- Palisades cherry or Vigor cabinets
- Gelcoat fiberglass exterior w/ 16" tires and 6,000 lb. axles
- Skylight over tub
- Garden tub glass door (per floorplan)
- Garden shower w/ glass door (per floorplan)
- La-Z-Boy® living room furniture (a Forest River exclusive)
- Double sofa air hide-a-bed
- Bar stools (per floorplan)
- Stabilizer jacks
- Detachable hitch
- Outside shower
- 10-gallon gas/electric DSI water heater (IPO 20 gal electric)
- Spare tire, carrier and cover
- Double insulation (floor and roof)
- Night shades

## Grand Villa

### UPGRADES

- 96" (8') interior height
- Cathedral slide (main slide room)
- Dishwasher in kitchen
- Garbage disposal at kitchen sink
- Under mount bathroom sink
- Fluorescent lighting in kitchen
- 3 ceiling paddle fans w/ light kits (110v)
- 110v lighting in coach area ceiling
- Skylights in main slide above dinette w/ shades
- Window above main patio door
- Stone facade around fireplace
- Residential porch light
- Double air hide-a-bed in main slide
- Adjustable lighting in kitchen soffit
- Outside water spigot
- Wine rack above refrigerator
- Custom designed linen window valances
- Cloth night shades
- Residential master bed comforter
- Decorative pillows
- Box springs and Serta® Dreamscape mattress
- Wood surround for fireplace
- Garbage can in kitchen
- Recessed lighting with dimmer switches

### OPTIONAL EQUIPMENT

- Fantastic vent w/ wall switch in kitchen
- La-Z-Boy rocker recliners
- La-Z-Boy sofa w/ hide-a-bed
- Spellbound luxury tan carpet
- 2 glider recliners
- Detachable hitch
- Gel coat exterior upgrade

### SALEM VILLA ESTATE/GRAND VILLA SERIES DECOR OPTIONS

Butterscotch Interior



LA Z BOY

Canyon Interior



Chocolate Interior

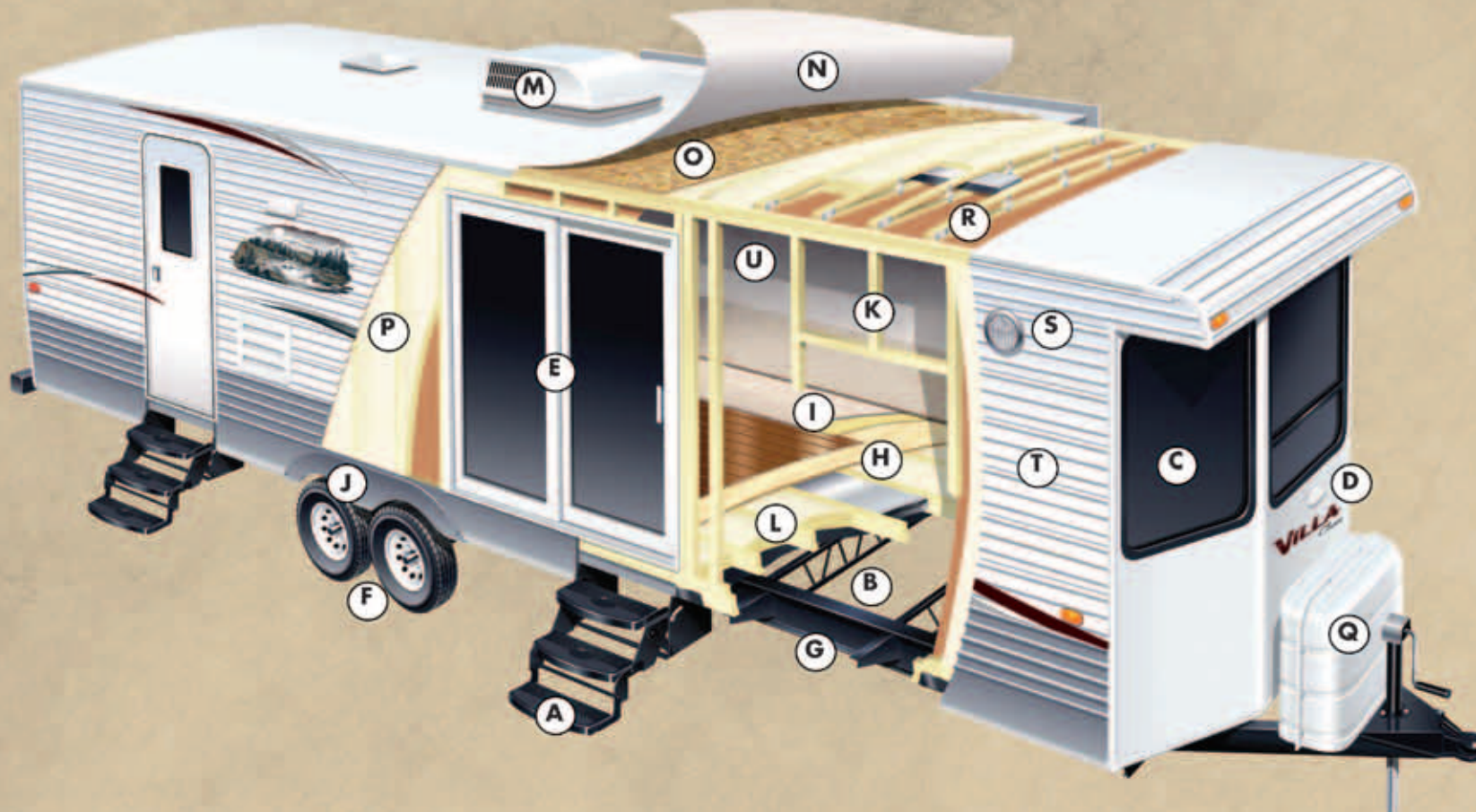


LA Z BOY

Soapstone Interior



# Villa SERIES CONSTRUCTION



- A. Triple Entry Steps
- B. 102 in. Exterior Width for Increased Living Space (96" Villa Classic)
- C. Tinted Windows
- D. Hitch Light
- E. Standard 60" Patio Door (Select Floorplans)
- F. 15" Radial Tires (16" with Optional Fiberglass Exterior)

- G. 12" I-Beam Powder-Coated Frame with Cambered Chassis
- H. 5/8" Tongue & Groove Plywood Flooring
- I. Carpet w/ Padding
- J. Fender Skirt
- K. 2" Wall Studs 16" on Center
- L. 2" X 3" Floor Joists 12" on Center
- M. 15K BTU Ducted A/C (13.5K on Classic)

- N. Seamless Rubber Roof (12 yr. Warranty)
- O. 3/8" Roof Decking (Full Walk-On Roof)
- P. R-7 Fiberglass insulation Throughout
- Q. Dual Bottle cover w Easy Access
- R. 5" Truss Roof Rafters (16" On Center)
- S. Flood Light (Villa Estate, Grand Villa Only)
- T. .024 Aluminum Siding (Fiberglass Opt.)
- U. 84" Interior Height Villa Classic/Estate, 96" in Grand Villa

JOIN THE SALEM FAMILY OF QUALITY BUILT TRAVEL TRAILERS, FIFTH WHEELS AND PARK TRAILERS

SALEM  
*Villa* SERIES

**CRUISE  
LITE**  
SALEM



SALEM



SALEM



SALEM  
**VILLA**  
*Cloud*



SALEM  
**VILLA**  
*Estate*



*Grand Villa*



SALEM



SALEM  
**ICE CABIN**



## PEACE OF MIND.

Forest River has yet another exclusive feature to offer. One year of free roadside assistance will be given to every new Salem Villa Series customer. This is just one more way to say "Thank you" and to ensure an enjoyable traveling experience.

Scan this barcode using a QR Reader on your smart phone to learn more about Forest River and our great products.



## Forest River Encourages You to Buy Locally

Forest River, Inc. strongly encourages our retail customers to purchase from their local dealership whenever possible due to the following factors:

- Our Dealers are as a rule, independently owned and operated businesses. Outside of those customers they personally sold products to, they are not contractually obligated to perform warranty service on Forest River products that were purchased elsewhere. There may be an occasion that you would be required to return to the point of purchase to satisfy warranty requirements.
- Although many dealerships will eventually service products not purchased at their place of business, they will usually take care of their customers and other Forest River customers who are traveling away from their local dealer as they would their own.
- Local purchases allow a customer to establish a relationship with a dealer close to home. This relationship provides the customer with a convenient location for service and support from a "home town" professional.
- The opportunity for a thorough PDI (Pre Delivery Inspection) and product orientation is an additional benefit of buying from your local dealer. Further providing the opportunity for refresher courses or the ability to get questions answered much more conveniently.
- For our Canadian customers, there are also requirements which must be met to bring an RV purchased out of the country to their home. Although not insurmountable, these requirements may involve such things as additional inspections and certifications, taxes and fees. Your local Canadian Dealer is a professional at meeting these requirements.

Forest River's goal is for all RV Owners to fully enjoy their RV experience. In light of this goal, and considering the advantages of buying local, we encourage you to be thorough when determining what product to purchase and which dealer to purchase it from as both are key to your ultimate satisfaction and the realization of your dreams.

## YOUR VILLA DEALER



Forest River, Inc.  
55470 C.R. 1  
Elkhart, IN 46514  
(574) 389-4600  
[www.forestriverinc.com](http://www.forestriverinc.com)  
[www.forestriveraccessories.com](http://www.forestriveraccessories.com)